

Best viewed using Chrome, Safari or Internet Explorer 9 or higher. If you are having trouble viewing this page please click here for the alternative viewer.

## Key points

### Week 34/2020 (17 - 23 Aug 2020)

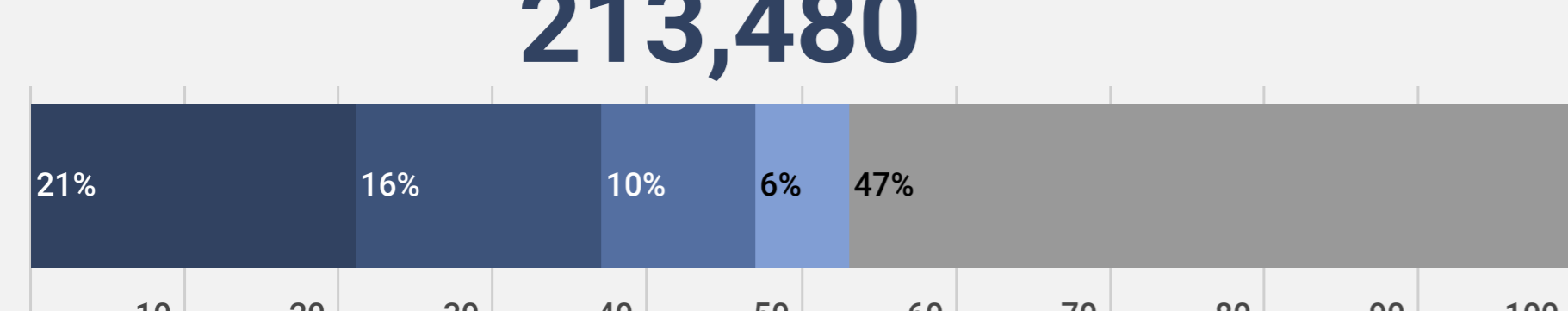
- The number of cases reported in the Region in week 34/2020 increased 6% compared to the previous week, and increased 72% compared with week 23/2020 (1-7 Jun) when the lowest number of cases per week were reported. The number of deaths in the Region in week 34/2020 declined 11% since the previous week (Figure 1)
- 53% (114,277) of the cases reported in week 34/2020 were reported from four countries: Spain (21%; 44,298), the Russian Federation (16%; 33,896), France (10%; 22,481) and Ukraine (6%; 13,602). The remaining cases (47%; 99,203) were reported by 54 countries and territories; each accounted for <5% of the total cases reported in week 34/2020
- Four countries had a crude incidence of >60 per 100,000 in week 34/2020: Andorra, Israel, Republic of Moldova and Spain. The crude incidence continues to vary across the region with a range from 0.9 per 100,000 population in Latvia to 115 per 100,000 population in Israel (Figure 2A)
- The 14-day cumulative incidence increased by >10% in week 34/2020 in 32 countries and territories in the Region, however for some countries data was retro-adjusted by national authorities: Albania, Andorra, Austria, Croatia, Czech Republic, Denmark, Finland, France, Georgia, Germany, Gibraltar, Greece, Hungary, Ireland, Italy, Jersey, Liechtenstein, Lithuania, Malta, Netherlands, Norway, Poland, Republic of Moldova, San Marino, Slovakia, Slovenia, Spain, Sweden, Switzerland, Turkey, Ukraine, and the United Kingdom (see [EURO COVID-19 Dashboard](#) for recent trends)
- 55% (1,473) of the deaths reported in week 34/2020 were reported by the Russian Federation (26%; 698), Romania (10%; 279), Ukraine (8%; 201), Kazakhstan (6%; 148) and Turkey (5%; 147). The remaining deaths (45%; 1,134) were reported from 43 countries and territories; each accounted for <5% of the total deaths reported in week 34/2020
- The proportion of reported cases that died was 1.2% in week 34/2020
- Community-transmission was reported by 26 countries and territories, 27 countries and territories reported cluster transmission, while 5 countries and territories reported sporadic transmission in week 34/2020 (see [EURO COVID-19 Dashboard](#))
- For a subnational view of the COVID-19 situation in the WHO-EURO Region see the [WHO-EURO COVID-19 Subnational Explorer](#)

## Summary overview

- The cumulative cases across the Region increased 5.6% to 4,004,176 cases in week 34/2020 (from 3,790,696 cases in week 33/2020) and cumulative deaths increased by 1.2% to 216,699 deaths (from 214,092 deaths in week 33/2020). Note the decrease in the total number of deaths due to retrospective reclassification of the COVID-19 deaths in two countries.
- As of 11 July 2020, six countries in the Region had an effective reproductive number significantly over 1: Belgium, France, Kyrgyzstan, Netherlands, Romania and Spain (See [EpiForecasts and the CMMID COVID working group COVID-19 Global Summary](#) for latest estimates)
- Eight countries in the Region each reported a cumulative incidence of >800 cases per 100,000 population: Andorra, Armenia, Israel, Luxembourg, Republic of Moldova, San Marino, Spain and Sweden (Figure 2B)
- As of week 34/2020, 67% (2,669,362) of cumulative cases were reported from the Russian Federation (24%; 956,749), Spain (10%; 401,978), the United Kingdom (8%; 324,601), Italy (6%; 258,136), Turkey (6%; 257,032), France (6%; 238,002) and Germany (6%; 232,864). The remaining cases (33%; 1,334,814) were reported by 54 countries and territories; each accounted for <5% of the total cases reported until week 34/2020
- As of week 34/2020, 70% of cumulative deaths (152,627) were reported from the United Kingdom (19%; 41,423), Italy (16%; 35,430), France (14%; 30,512), Spain (13%; 28,879) and the Russian Federation (8%; 16,383). The remaining deaths (30%; 64,072) were reported by 52 countries and territories; each accounted for <5% of the total cases reported until week 34/2020
- 88% of all deaths with information available were in persons aged >=65 years and 58% of all deaths were in men (Table 1)
- 96% of all deaths with information available had at least one underlying condition, with cardiovascular disease the leading comorbidity (75%) (Table 1)
- 13% of cases were in persons aged >=65 years in week 34/2020, a decrease from 38% in week 14/2020, while the percentage of fatal cases aged >=65 years was 69% in week 34/2020 (compared to 91% in week 14/2020) (Figure 3)
- Pooled estimates of all-cause mortality for 24 countries in the EuroMOMO network show a low level of excess mortality for the participating countries, but confined to a few countries. This excess mortality could be explained by local heat waves as well as COVID-19 transmission
- In week 34/2020, four countries reported 74 tests and no SARS-CoV-2 detections in persons with influenza-like illness (ILI) in primary care sentinel surveillance. The highest positivity in the ILI sentinel surveillance was 14.6%, seen in week 15/2020 (Figure 4)
- Overall, there were 68,338 (8%) COVID-19 cases among the total of 851,776 tests reported to have been performed in 17 countries for week 34/2020 (Figure 5)

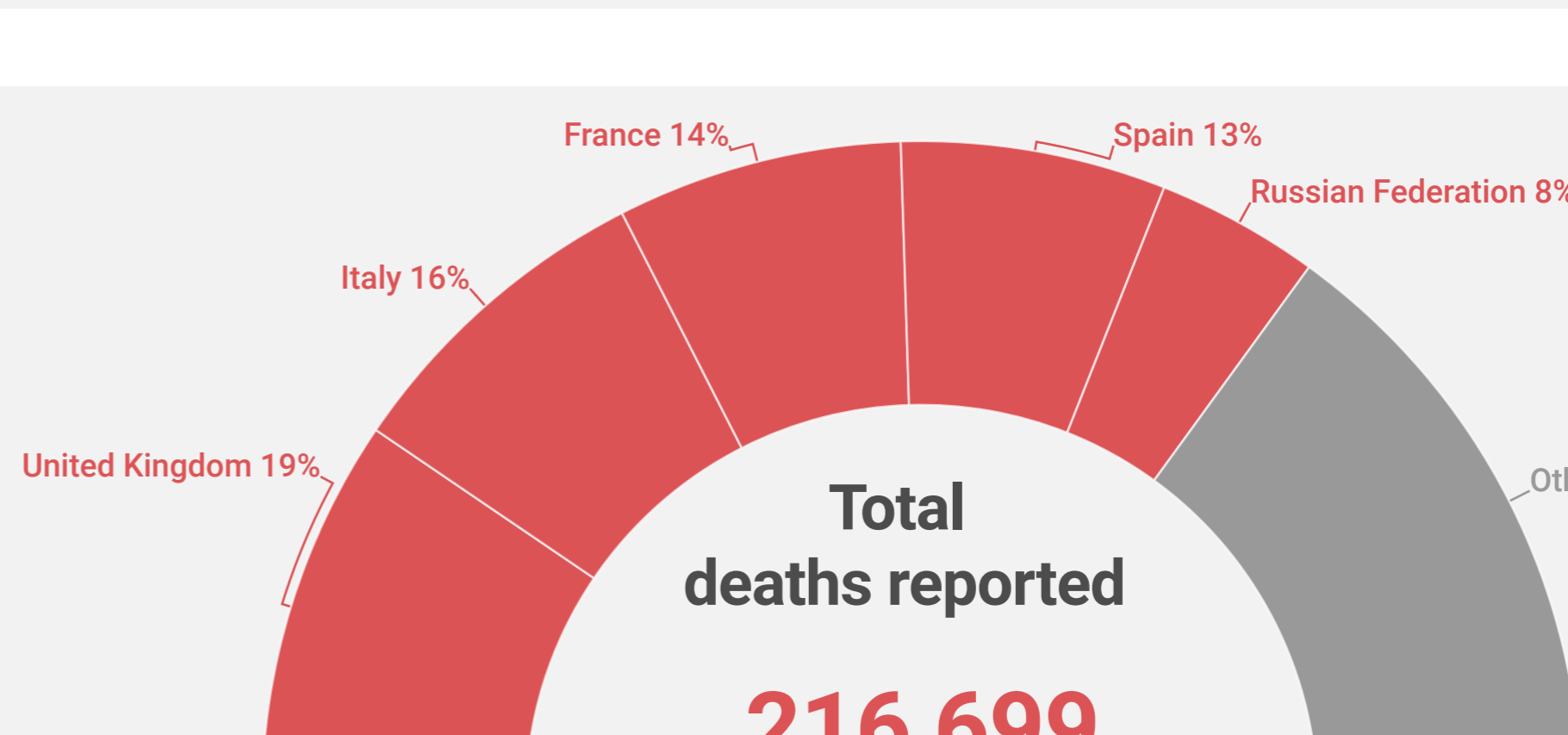
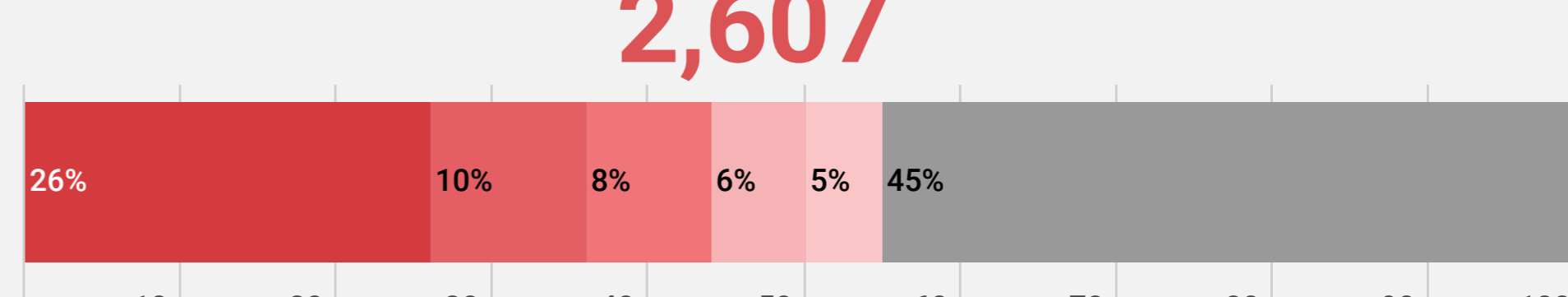
## New cases (week 34/2020)

213,480



## New deaths (week 34/2020)

2,607



88% of deaths were in persons aged >=65+

58% of deaths were in men

96% of deaths had at least 1 underlying condition

75% of deaths had cardiovascular disease

For more detailed information see: [WHO Global situation reports](#) [WHO Global situation dashboard](#)

Figure 1: Number of COVID-19 cases (N=4,004,176) and deaths (N=216,699) by reporting week

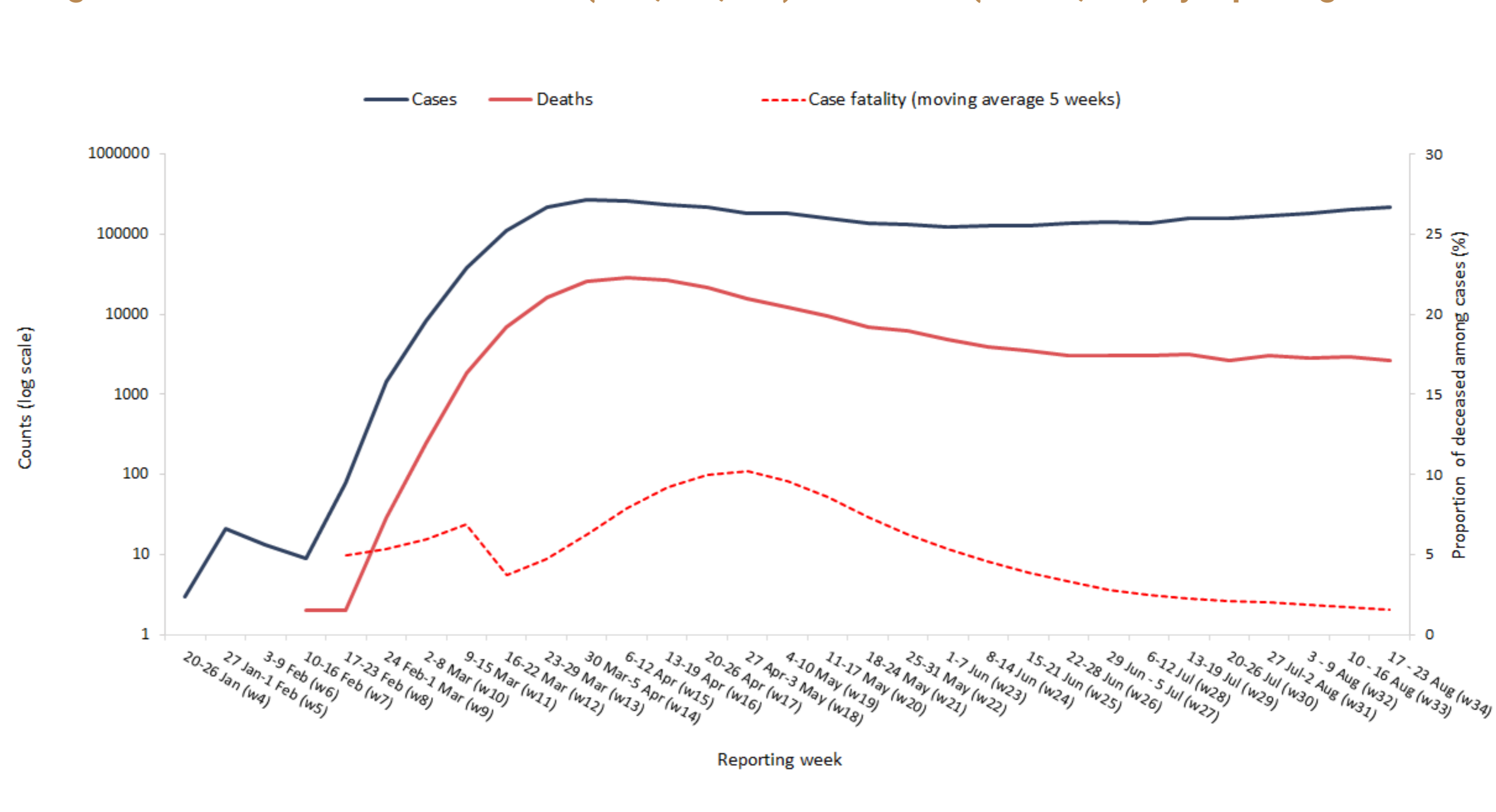


Figure 2A. COVID-19 incidence per 100,000 population and number of deaths by country for week 34

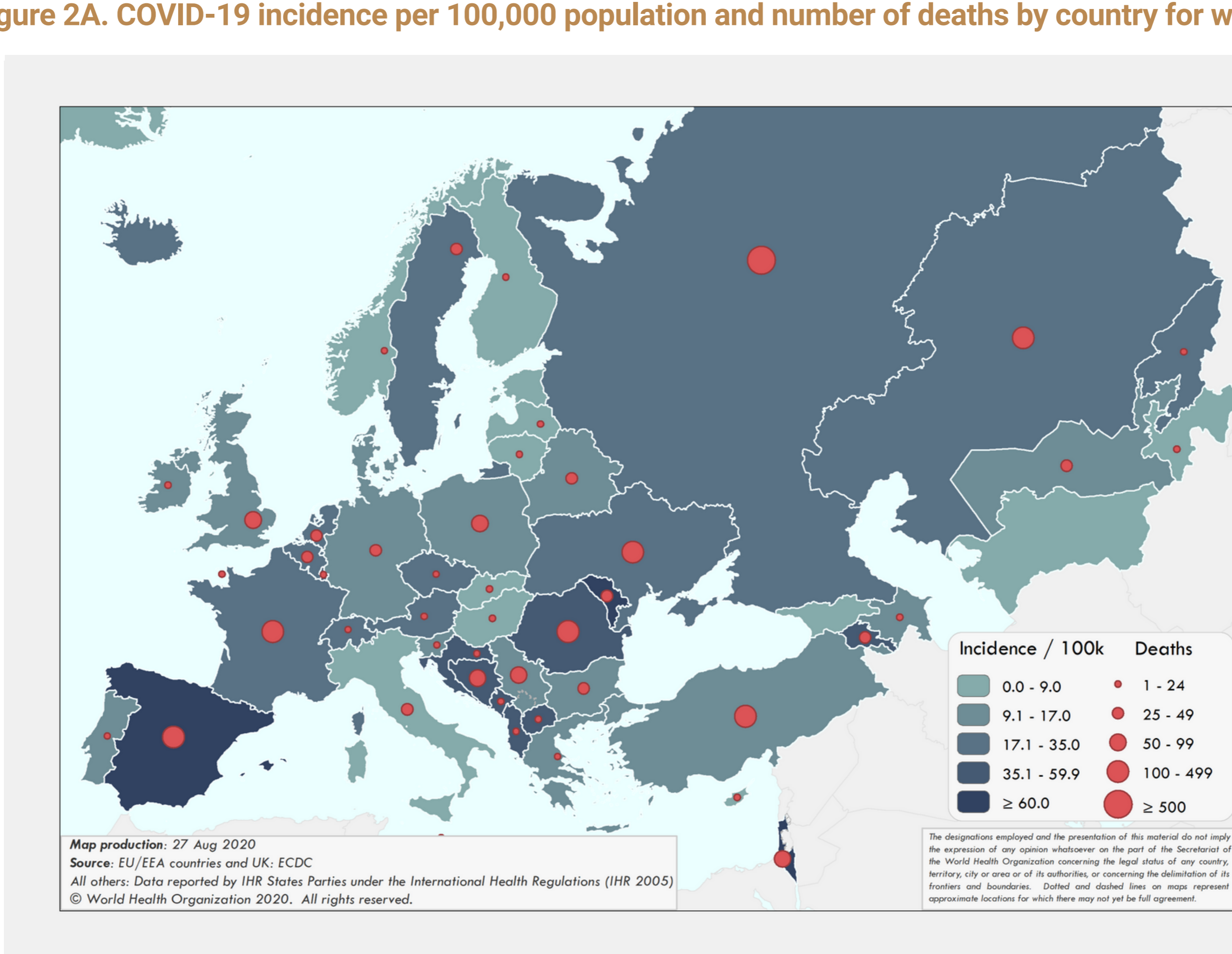


Figure 2B. COVID-19 cumulative incidence per 100,000 population and number of deaths by country

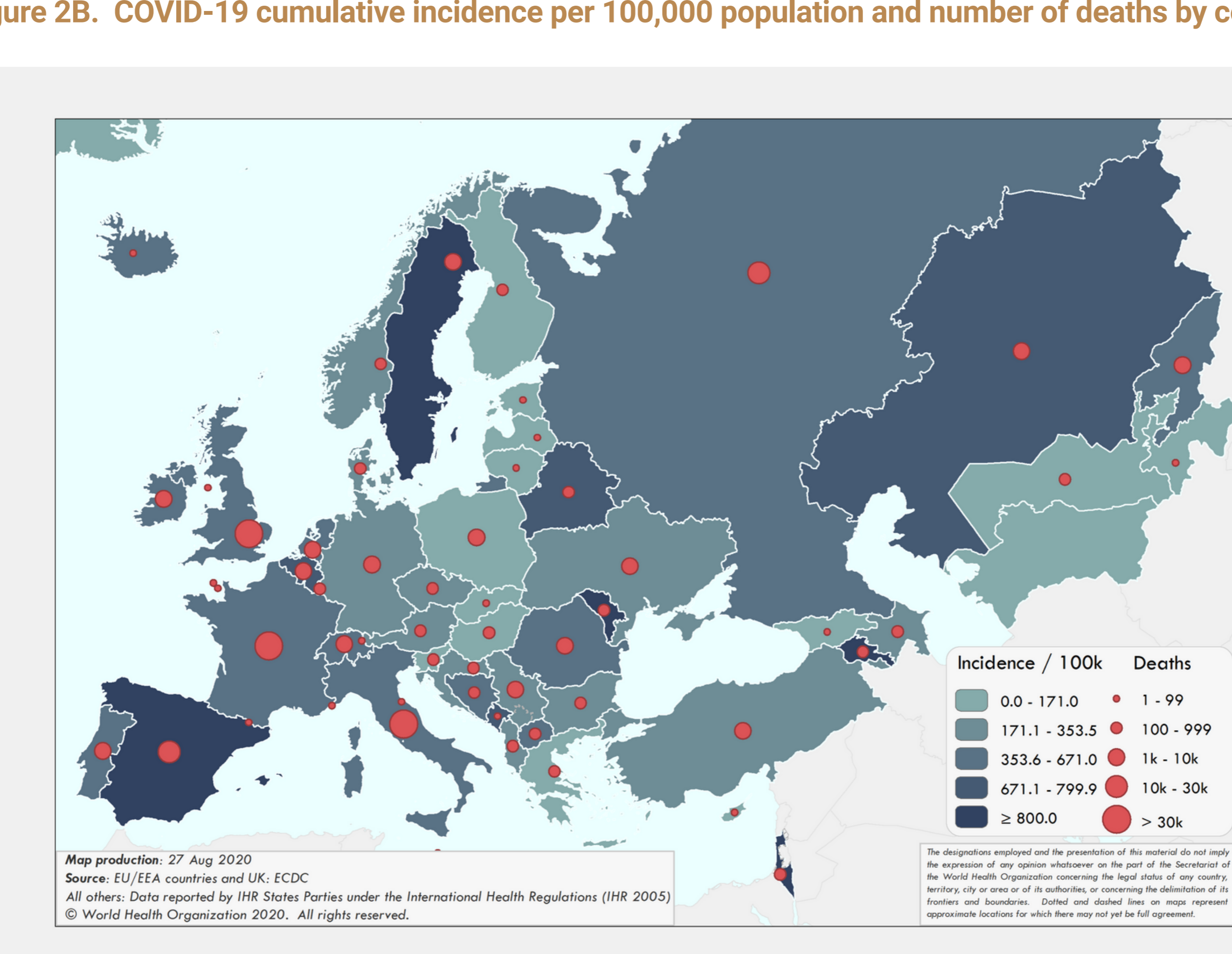


Table 1. Characteristics of COVID-19 deaths

Characteristics	n	%	Total records with data available
Age in years, median (range)	81 (0-108)		96,194
Sex, male	55,515	58	96,066
At least one underlying condition	41,353	96	43,246
• cardiovascular disease	7,937	75	10,524
• diabetes	1,983	40	4,987
• lung disease	1,749	27	6,463
• neurological disease / dementia	2,117	24	8,722
• renal disease	866	24	3,634
• obesity	480	11	4,373
• liver disease	454	6	7,964
• immune disease	76	2	4,381
• other	1,109	21	5,221

Source: Mortality database (n=96,205)

Figure 3. COVID-19 cases (N=1,207,959) and deaths (N=44,573) by age group and reporting week

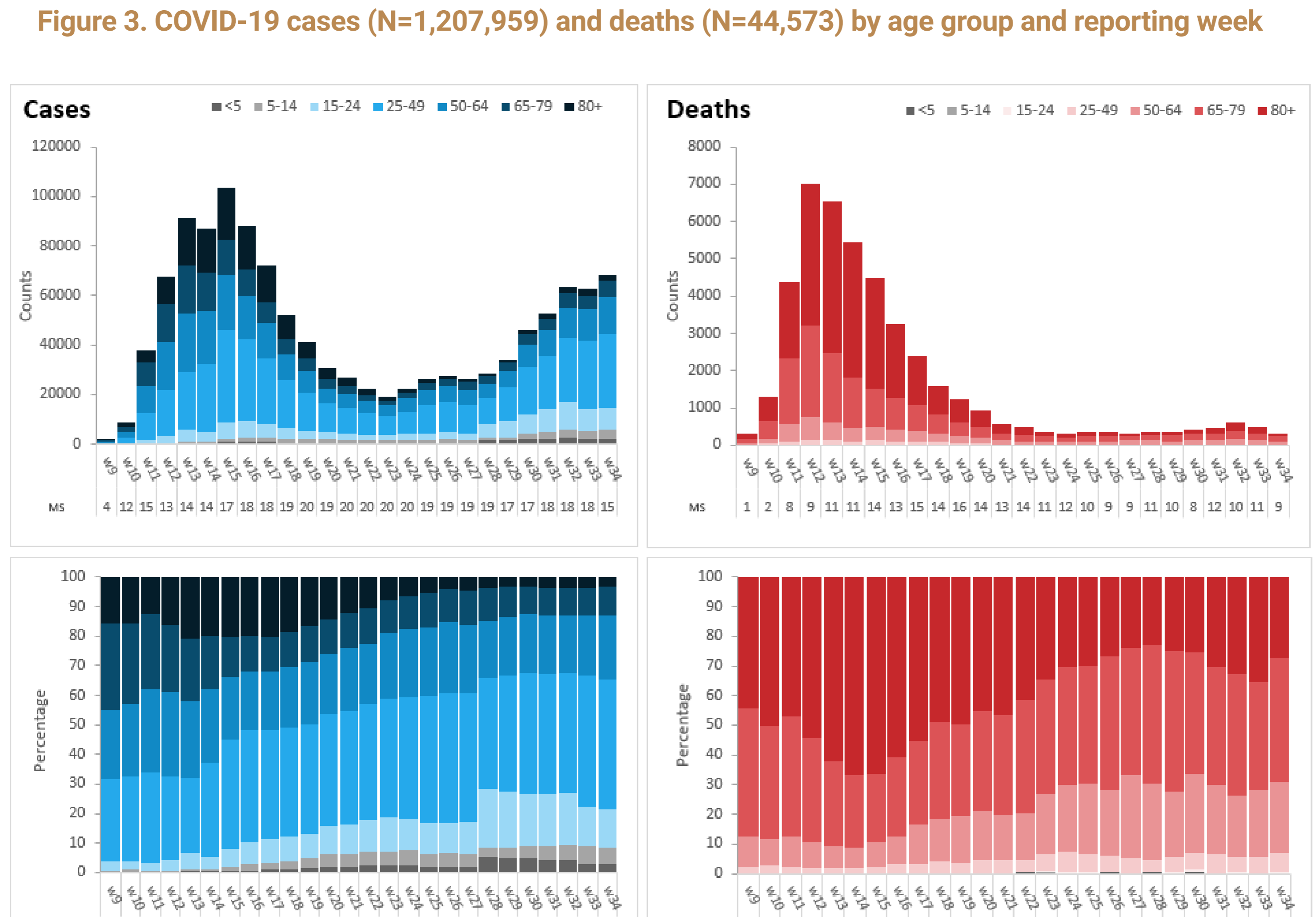
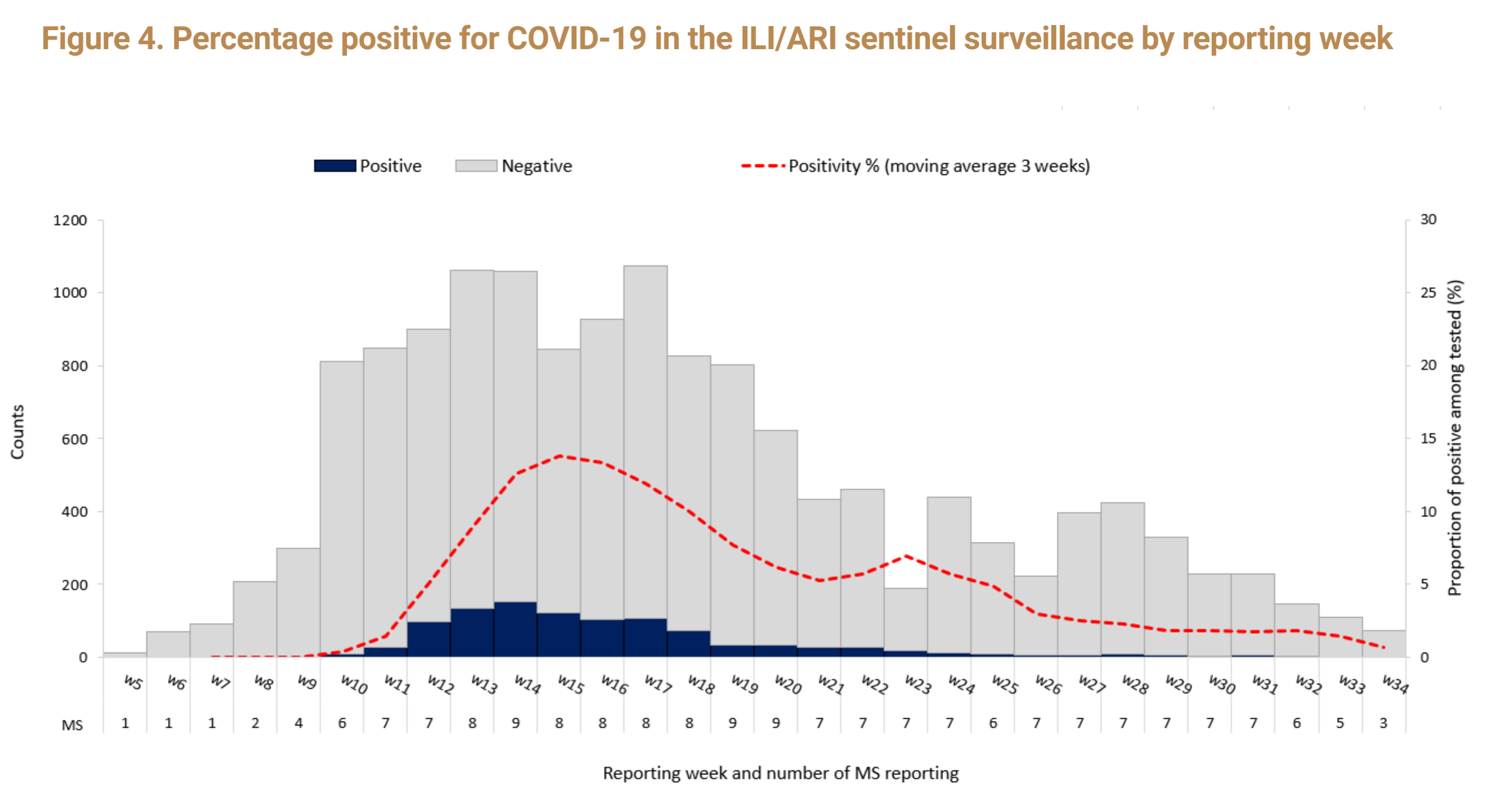
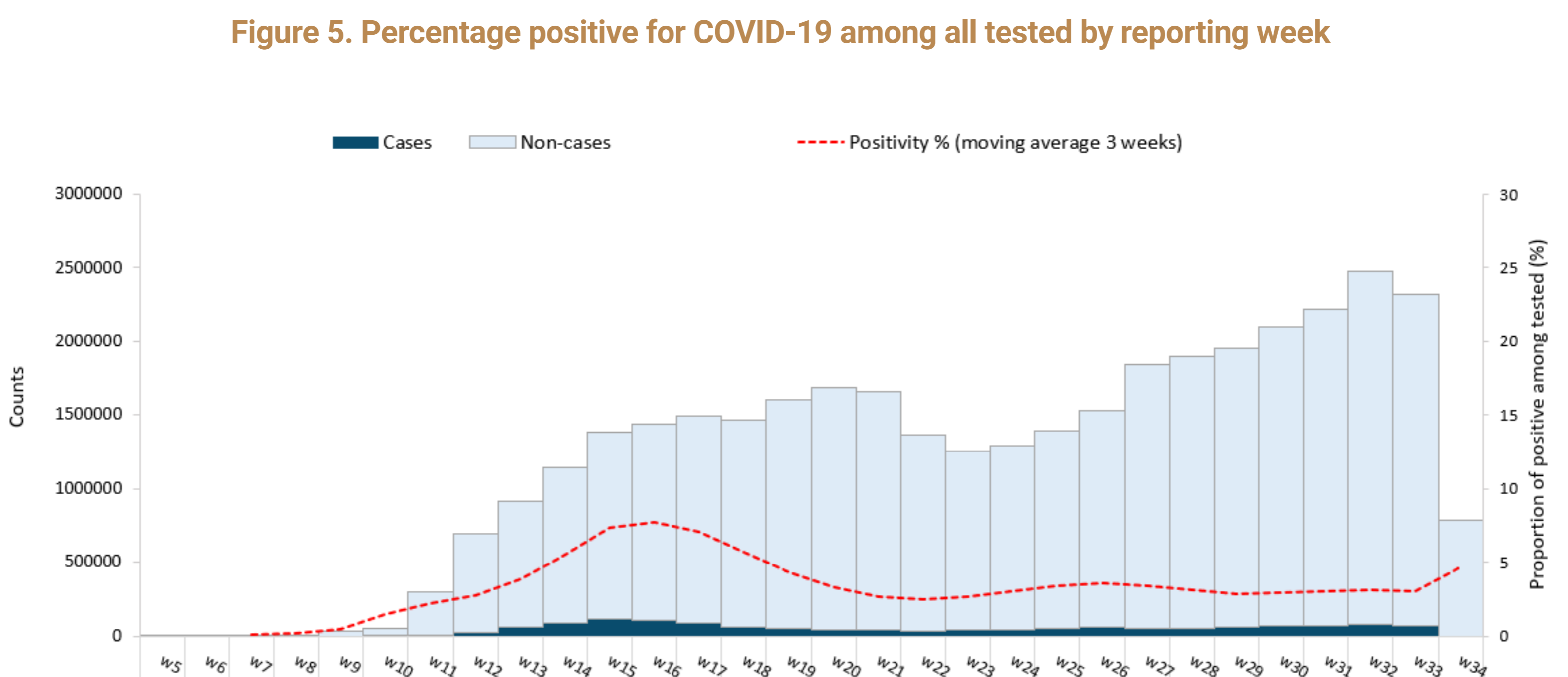


Figure 4. Percentage positive for COVID-19 in the ILI/ARI sentinel surveillance by reporting week



Source: Aggregate data from WHO XMart and TESSy, MS: Member State

Figure 5. Percentage positive for COVID-19 among all tested by reporting week



Source: Aggregate data from WHO XMart and TESSy. Note: Member States that report cases only (no testing data) are not included. MS: Member State