

IRELAND



Population: 4 469 900
Income group: High
Gross national income per capita: US\$ 41 720

INSTITUTIONAL FRAMEWORK

Lead agency	Department of Transport, Tourism and Sport
Funded in national budget	Yes
National road safety strategy	Yes
Funding to implement strategy	Yes, fully funded
Fatality reduction targets set	Yes (2007–2012)
Fatality reduction target	Not greater than 6 deaths per 100 000 population

SAFER ROADS AND MOBILITY

Formal audits required for new road construction	Yes
Regular inspections of existing road infrastructure	Parts of network
Policies to promote walking or cycling	No
Policies to encourage investment in public transport	Yes
Policies to separate road users to protect VRUs	Yes

SAFER VEHICLES

Total registered vehicles (2010)	2 416 387
Cars and 4-wheeled light vehicles	2 254 059
Motorized 2- and 3-wheelers	40 895
Heavy trucks	29 512
Buses	15 654
Other	76 267
Vehicle standards applied	
UN World forum on harmonization of vehicles standards	No
New car assessment programme	No
Vehicle regulations	
Front and rear seat-belts required in all new cars	— ^a
Front and rear seat-belts required all imported cars	Yes

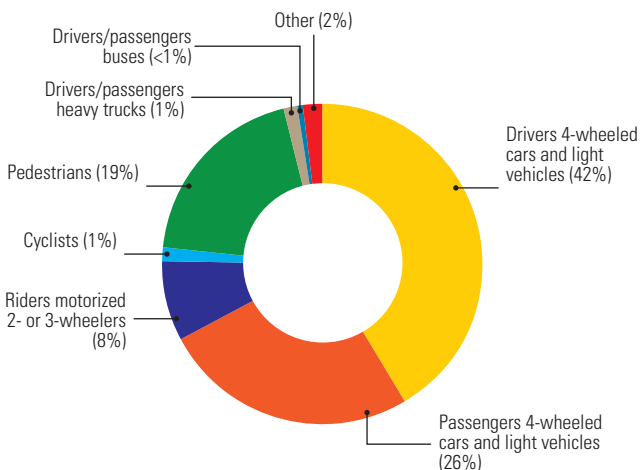
^a No car manufacturers/assemblers.

DATA

Reported road traffic fatalities (2010)	212 ^b , 78%M, 22%F
Estimated GDP lost due to road traffic crashes	—

^b Police records. Defined as died within 30 days of crash.

DEATHS BY ROAD USER CATEGORY



Source: 2010, Garda Síochána (Police) National Traffic Bureau (GNTB) and Road Safety Authority (RSA).

Further data on each country can be found in the statistical annex.

SAFER ROAD USERS

Penalty/demerit point system in place	Yes
National speed limits	Yes
Local authorities can set lower limits	Yes
Maximum limit urban roads	50 km/h
Enforcement	—
National drink-driving law	Yes
BAC limit – general population	0.08 g/dl
BAC limit – young or novice drivers	0.08 g/dl
BAC limit – professional/commercial drivers	0.08 g/dl
Random breath testing and/or police checkpoints	No
Enforcement	—
% road traffic deaths involving alcohol	11% ^c
National motorcycle helmet law	Yes
Applies to drivers and passengers	Yes
Helmet standard mandated	—
Enforcement	—
Helmet wearing rate	—
National seat-belt law	Yes
Applies to front and rear seat occupants	Yes
Enforcement	—
Seat-belt wearing rate	90% Front seats ^d 79% Rear seats ^d
National child restraint law	Yes
Enforcement	—
National law on mobile phones while driving	Yes
Law prohibits hand-held mobile phone use	Yes
Law also applies to hands-free mobile phones	No

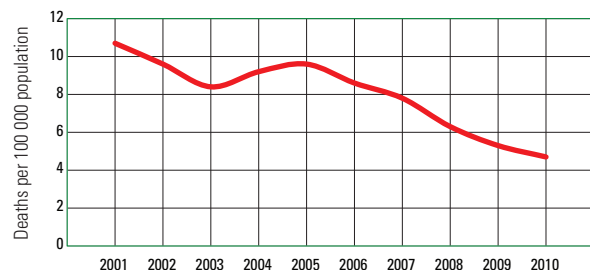
^c 2006, D. Bedford, N. McKeown, A. Vellinga, F. Howell (2006). Alcohol in Fatal Road Crashes In Ireland. Public Health Directorate, Health Service Executive, Ireland.

^d 2010, Road Safety Authority (RSA).

POST-CRASH CARE

Vital registration system	Yes
Emergency Room based injury surveillance system	No
Emergency access telephone number(s)	112
Seriously injured transported by ambulance	50–74%
Permanently disabled due to road traffic crash	—
Emergency medicine training for doctors	Yes
Emergency medicine training for nurses	Yes

TRENDS IN ROAD TRAFFIC DEATHS



Source: Garda Síochána (Police) National Traffic Bureau (GNTB) and RSA.