

SERBIA



Population: 9 856 222
 Income group: Middle
 Gross national income per capita: US\$ 5 630

INSTITUTIONAL FRAMEWORK

Lead agency	Road Traffic Safety Agency
Funded in national budget	Yes
National road safety strategy	Yes ^a
Funding to implement strategy	Partially funded
Fatality reduction targets set	Yes (2009–2019)
Fatality reduction target	17% ^b

^a For children only, as part of a Children's Environmental Health Action Plan.
^b Child deaths only.

SAFER ROADS AND MOBILITY

Formal audits required for new road construction	No
Regular inspections of existing road infrastructure	No
Policies to promote walking or cycling	No
Policies to encourage investment in public transport	Yes
Policies to separate road users to protect VRUs	Yes

SAFER VEHICLES

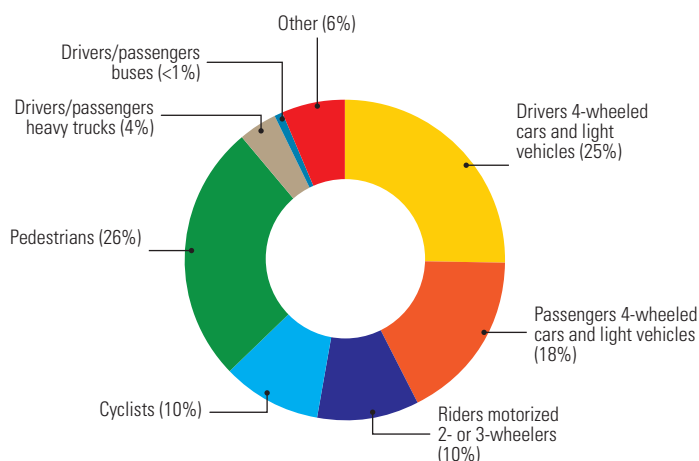
Total registered vehicles (2009)	2 419 569
Cars and 4-wheeled light vehicles	1 679 140
Motorized 2- and 3-wheelers	36 817
Heavy trucks	183 023
Buses	9 016
Other	511 573
Vehicle standards applied	
UN World forum on harmonization of vehicles standards	Yes
New car assessment programme	No
Vehicle regulations	
Front and rear seat-belts required in all new cars	Yes
Front and rear seat-belts required all imported cars	Yes

DATA

Reported road traffic fatalities (2010)	660 ^c , 79%M, 21%F
Estimated GDP lost due to road traffic crashes	2.7% ^d

^c Police records. Defined as died within 30 days of crash.
^d 2008, World Bank Report. Country Report – REPUBLIC OF SERBIA, Review of road safety management capacity and proposals for an investment strategy.

DEATHS BY ROAD USER CATEGORY



Source: 2009, Ministry of Interior.

Further data on each country can be found in the statistical annex.

SAFER ROAD USERS

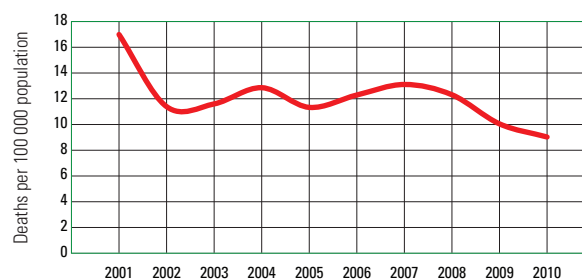
Penalty/demerit point system in place	Yes
National speed limits	Yes ^a
Local authorities can set lower limits	Yes ^a
Maximum limit urban roads	50 km/h
Enforcement	0 1 2 3 4 5 6 7 8 9 10
National drink-driving law	Yes
BAC limit – general population	0.03 g/dl
BAC limit – young or novice drivers	0 g/dl
BAC limit – professional/commercial drivers	0 g/dl
Random breath testing and/or police checkpoints	Yes
Enforcement	0 1 2 3 4 5 6 7 8 9 10
% road traffic deaths involving alcohol	5% ^f
National motorcycle helmet law	Yes
Applies to drivers and passengers	Yes
Helmet standard mandated	Yes
Enforcement	0 1 2 3 4 5 6 7 8 9 10
Helmet wearing rate	—
National seat-belt law	Yes
Applies to front and rear seat occupants	Yes
Enforcement	0 1 2 3 4 5 6 7 8 9 10
Seat-belt wearing rate	55–85% Front seats ^g 10–35% Rear seats ^g
National child restraint law	Yes
Enforcement	0 1 2 3 4 5 6 7 8 9 10
National law on mobile phones while driving	Yes
Law prohibits hand-held mobile phone use	Yes
Law also applies to hands-free mobile phones	Yes

^a In residential areas.
^f 2010, Database of the Ministry of Interior on road traffic accidents.
^g Lipovac and students of Criminal Police Academy. Use of Safety Belts in Republic of Serbia (2011). Unpublished. Seat-belt wearing rates varied depending on type of road.

POST-CRASH CARE

Vital registration system	Yes
Emergency Room based injury surveillance system	No
Emergency access telephone number(s)	Multiple numbers
Seriously injured transported by ambulance	≥75%
Permanently disabled due to road traffic crash	—
Emergency medicine training for doctors	Yes
Emergency medicine training for nurses	No

TRENDS IN ROAD TRAFFIC DEATHS



Source: Statistical Office of the Republic of Serbia and Ministry of Interior.