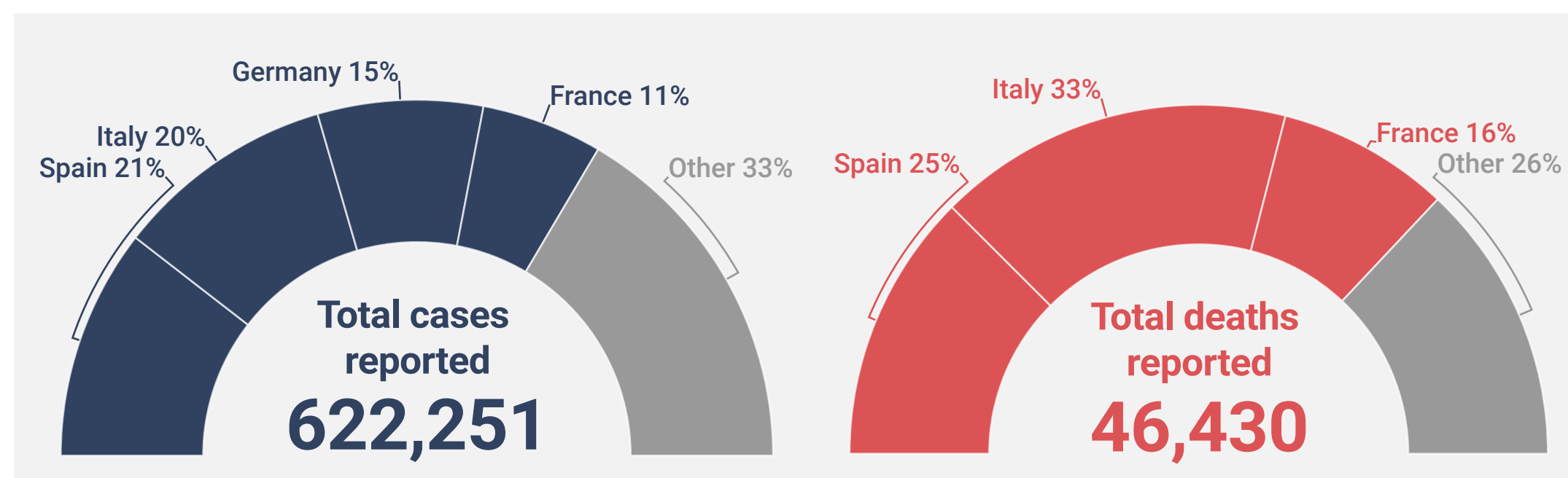


Best viewed using Chrome, Safari or Internet Explorer 9 or higher. If you are having trouble viewing this page please [click here](#) for the alternative viewer.

Key points

- The number of cases reported in the European Region doubled compared to Epi week 13/2020
- 67% of the cases were reported from Italy, Spain, Germany and France
- 75% of the deaths were reported from Spain, Italy, and France
- Nine countries and territories reported a cumulative incidence >200/100,000 population
- One out of 13 reported infections with information available was in a health care worker
- 95% of deaths were in persons aged 60 years and older and 68% of all deaths were in males
- 91% of deaths with information available had at least one underlying condition
- There was a steep increase in the pooled excess all-cause mortality in 24 countries and regions primarily in the age group >65 years, but also in the 15-64 years age group for week 14/2020 (see [European Mortality Bulletin](#))
- In Epi week 14/2020, the percentage of COVID-19 detections in persons with influenza-like illness in the primary care setting was 1% (3 countries) compared to 6% in Epi week 13/2020 (6 countries)

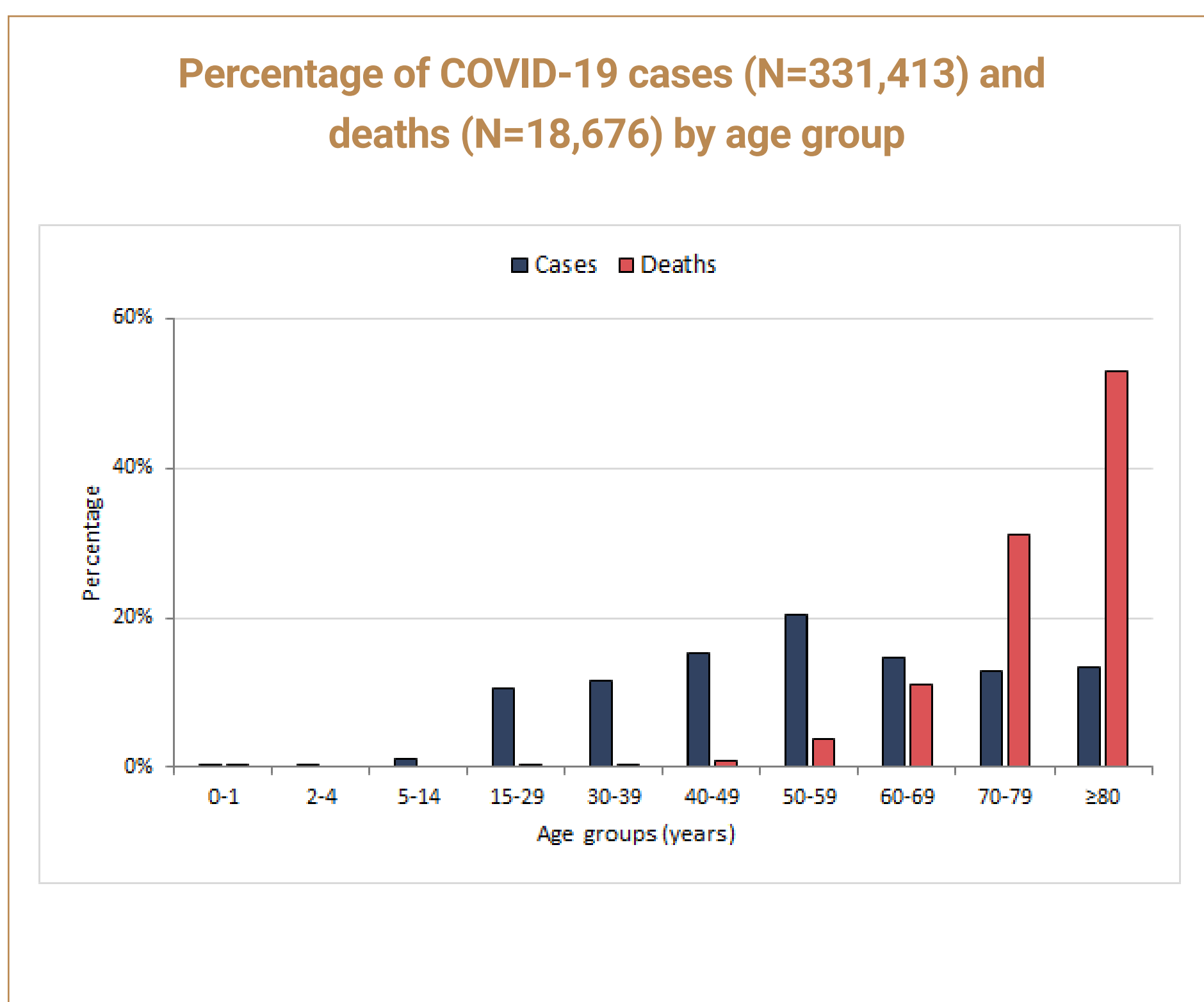
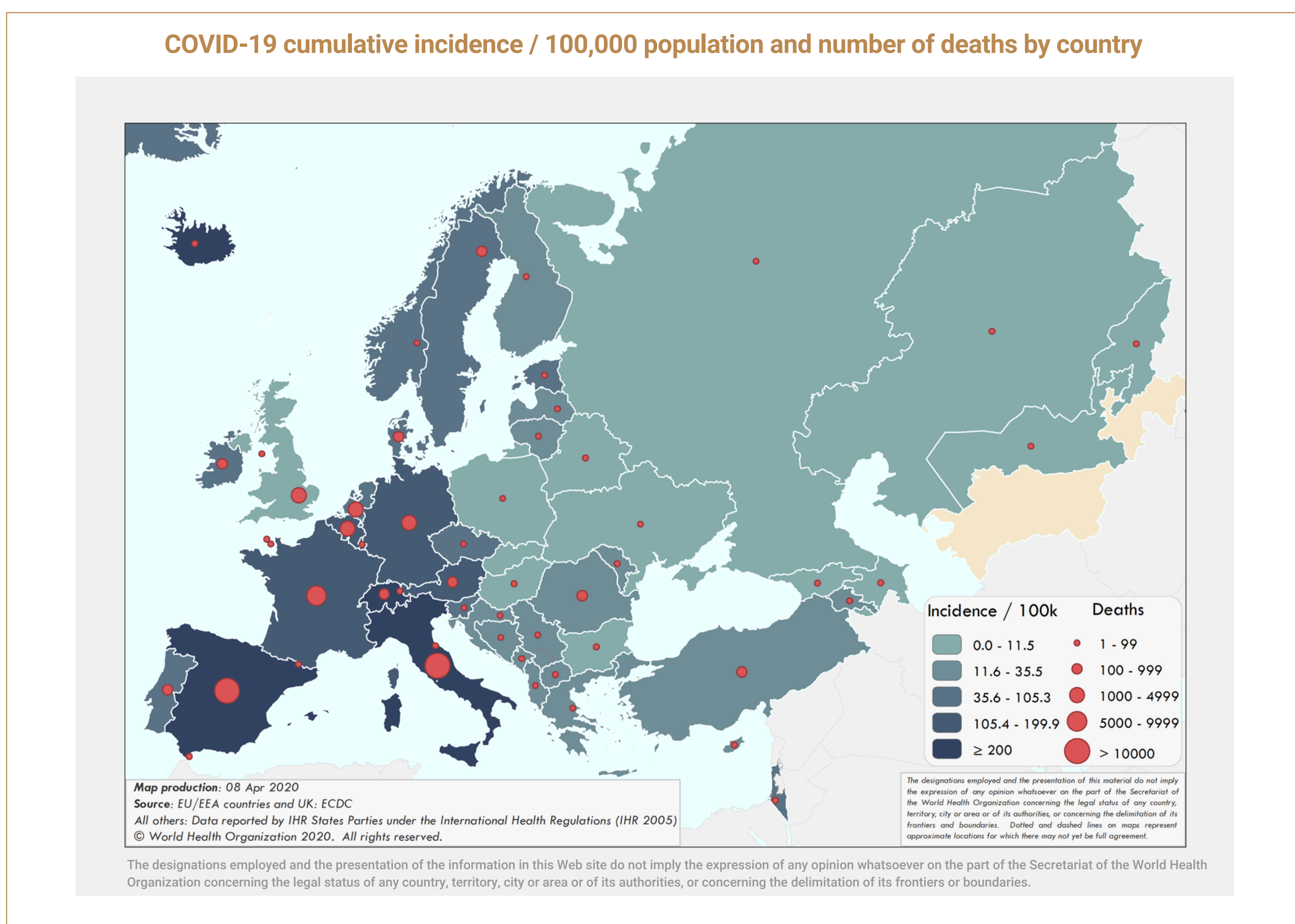
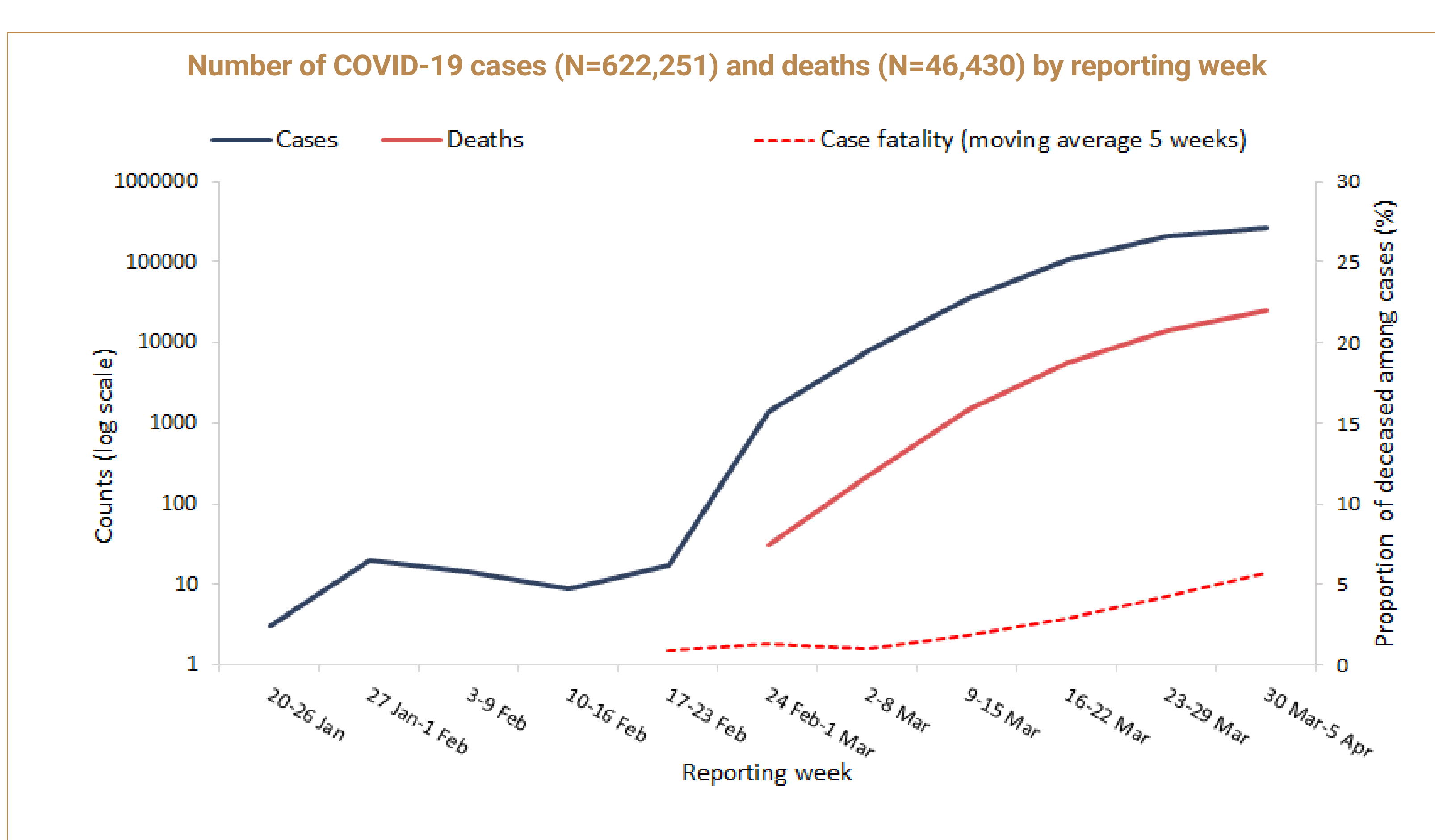


Countries & territories with reported cases	Total cases reported	Total deaths reported
60 (0)	622,251 (260,680)	46,430 (24,998)

(numbers in brackets are new for the week of 30 March-5 April 2020)



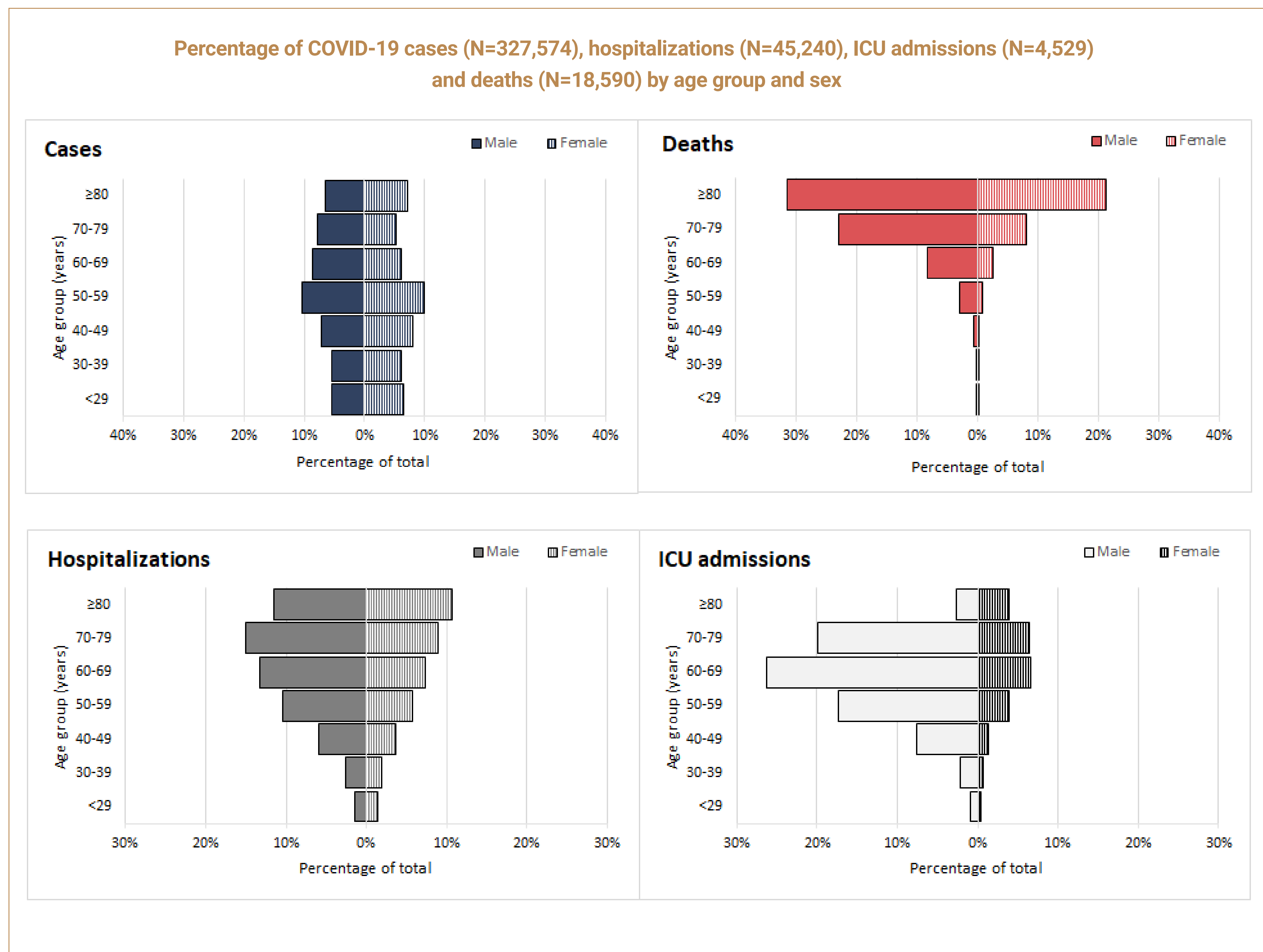
For additional information see: [WHO Global situation reports](#) [WHO Global situation dashboard](#)



Characteristics of COVID-19 cases and deaths

Characteristics	n	%	Total records with data available
Cases			
Age in years, median (range)*	54 (1-105)		275846
Sex, male*	140883	52	273293
Travelled*	8481	26	33106
Recovered*	13488	20	66042
Health care workers*	19519	13	152848
Hospitalization*	50788	31	164686
Intensive care unit admissions*	5359	4	126789
Deaths			
Age in years, median (range)^	80 (24-105)		18176
Sex, male^	11122	58	19043
At least one underlying condition^	4728	91	5196
• cardiovascular disease	2180	42	5224
• diabetes	1010	20	5092
• lung disease	540	11	4906
• renal disease	263	17	1547
• malignancy	189	17	1103
• neurological disease / dementia	205	14	1497
• other	1041	17	6291

Source: *Case report forms (n=277,323);
^Case report forms and aggregated data from Italy (02/05 April 2020) and Spain (3 April 2020) (n=350,933); Health care workers refer to occupation and not to the place of exposure
*Case report forms, mortality survey, aggregated data from Italy (2 April 2020) and Spain (3 April 2020) (n=19,133);



Source: International Health Regulation (IHR 2005) reports; case report forms; mortality survey; aggregated data from Italy and Spain. The reported data will be updated as more information becomes available.