

Best viewed using Chrome, Safari or Internet Explorer 9 or higher. If you are having trouble viewing this page please click here for the alternative viewer.

Key points

Week 40/2020 (28 Sept - 4 Oct 2020)

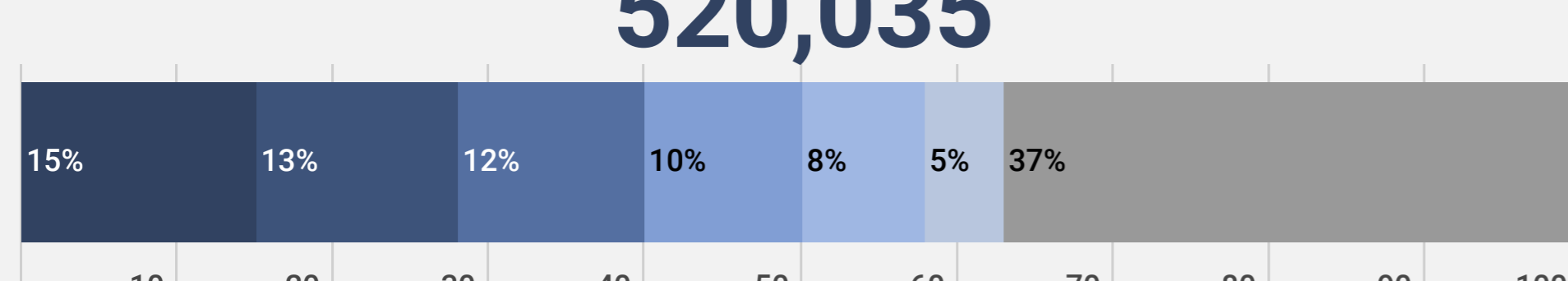
- The number of cases reported in the Region increased 11% to 520,035 in week 40/2020 compared to the previous week (470,062 cases in week 39/2020) and have now exceeded (96% increase) those reported when the pandemic first peaked in Europe in week 14/2020 (30 Mar - 5 Apr; 265,083)
- 63% (326,358) of the cases reported in week 40/2020 were reported from six countries: France (15%; 79,179), Spain (13%; 65,800), Russian Federation (12%; 63,563), United Kingdom (10%; 50,740), Israel (8%; 39,248) and Ukraine (5%; 27,828). The remaining cases (37%; 193,677) were reported by 52 countries and territories; each accounted for <5% of the total cases reported in week 40/2020
- The crude incidence continues to vary across the region with a range from 3.1 per 100,000 population in Tajikistan to 461 per 100,000 population in Israel in week 40/2020
- Ten countries had a crude incidence of ≥ 100 per 100,000 in week 40/2020: Israel (461), Andorra (355), Montenegro (267), Czech Republic (162), Belgium (150), Spain (141), Netherlands (136), Republic of Moldova (132), France (122) and Armenia (105) (Figure 2A)
- The 14-day cumulative incidence increased by $\geq 10\%$ in week 40/2020 in 41 countries and territories in the Region; an increase of $\geq 50\%$ was observed in 23 of these countries and territories: Andorra, Armenia, Belarus, Cyprus, Czech Republic, Denmark, Estonia, Faroe Islands, Finland, Georgia, Gibraltar, Iceland, Ireland, Jersey, Kyrgyzstan, Latvia, Liechtenstein, Lithuania, Netherlands, Poland, Slovakia, Slovenia and the United Kingdom (see [EURO COVID-19 Dashboard](#) for recent trends)
- The number of deaths in the Region in week 40/2020 increased 11% to 5,325 compared to the previous week (4,813 deaths in week 39/2020) (Figure 1). The proportion of reported cases that died remains 1.0% in week 40/2020
- 65% (3,453) of the deaths reported in week 40/2020 were reported by the Russian Federation (19%; 1,034), Spain (13%; 682), France (9%; 498), Turkey (9%; 455), Ukraine (8%; 438) and the United Kingdom (6%; 346). The remaining deaths (35%; 1,872) were reported from 42 countries and territories; each accounted for <5% of the total deaths reported in week 40/2020
- Community-transmission was reported by 32 countries and territories, 22 countries and territories reported cluster transmission, while 4 countries and territories reported sporadic transmission in week 40/2020
- For an interactive subnational view of the recent COVID-19 situation in the WHO-EURO Region see the [WHO-EURO COVID-19 Subnational Explorer](#)

Summary overview

- The cumulative cases across the Region increased 9.1% to 6,248,800 cases in week 40/2020 (from 5,728,765 cases in week 39/2020) and cumulative deaths increased by 2.3% to 240,736 deaths (from 235,411 deaths in week 39/2020)
- As of 21 September 2020, 19 countries in the Region had an effective reproductive number significantly over 1: Armenia, Belarus, Belgium, Denmark, Estonia, Georgia, Germany, Ireland, Italy, Kyrgyzstan, Latvia, Lithuania, Netherlands, Poland, Romania, Russian Federation, Slovakia, Sweden and the United Kingdom (See [EpiForecasts and the CMMID COVID working group COVID-19 Global Summary](#) for latest estimates)
- Nine countries in the Region each reported a cumulative incidence of ≥ 1300 cases per 100,000 population: Israel (3078), Andorra (2735), San Marino (2215), Montenegro (1950), Armenia (1775), Spain (1735), Holy See (1472), Luxembourg (1414) and Republic of Moldova (1382) (Figure 2B)
- As of week 40/2020, 65% (4,057,511) of cumulative cases were reported from the Russian Federation (19%; 1,215,001), Spain (13%; 810,856), France (10%; 606,625), United Kingdom (8%; 480,017), Turkey (5%; 323,014), Italy (5%; 322,751) and Germany (5%; 299,227). The remaining cases (35%; 2,191,289) were reported by 54 countries and territories; each accounted for <5% of the total cases reported until week 40/2020
- As of week 40/2020, 68% of cumulative deaths (164,220) were reported from the United Kingdom (18%; 42,317), Italy (15%; 35,968), Spain (13%; 32,379), France (13%; 32,198) and the Russian Federation (9%; 21,358). The remaining deaths (32%; 76,516) were reported by 52 countries and territories; each accounted for <5% of the total cases reported until week 40/2020
- 15.2% of cases were in persons aged ≥ 65 years in week 40/2020, a decrease from 38% in week 14/2020, while the percentage of fatal cases aged ≥ 65 years was 67% in week 40/2020 (compared to 91% in week 14/2020) (Figure 3)
- 88% of all deaths with information available were in persons aged ≥ 65 years and 56% of all deaths were in men (Table 1). 95% of all deaths with information available had at least one underlying condition, with cardiovascular disease the leading comorbidity (83%) (Table 1)
- Pooled estimates of all-cause mortality for 24 participating countries in the [EuroMOMO](#) network show normal levels. In some countries, however, there seems to be a small excess mortality.
- In week 40/2020, six countries reported a total of 118 tests and 4 detections of SARS-CoV-2 in persons with influenza-like illness (ILI) in primary care sentinel surveillance (Figure 4)
- Overall, there were 331,301 (8.7%) COVID-19 cases among the total of 3,825,688 tests reported to have been performed in 20 countries in week 40/2020 (Figure 5)

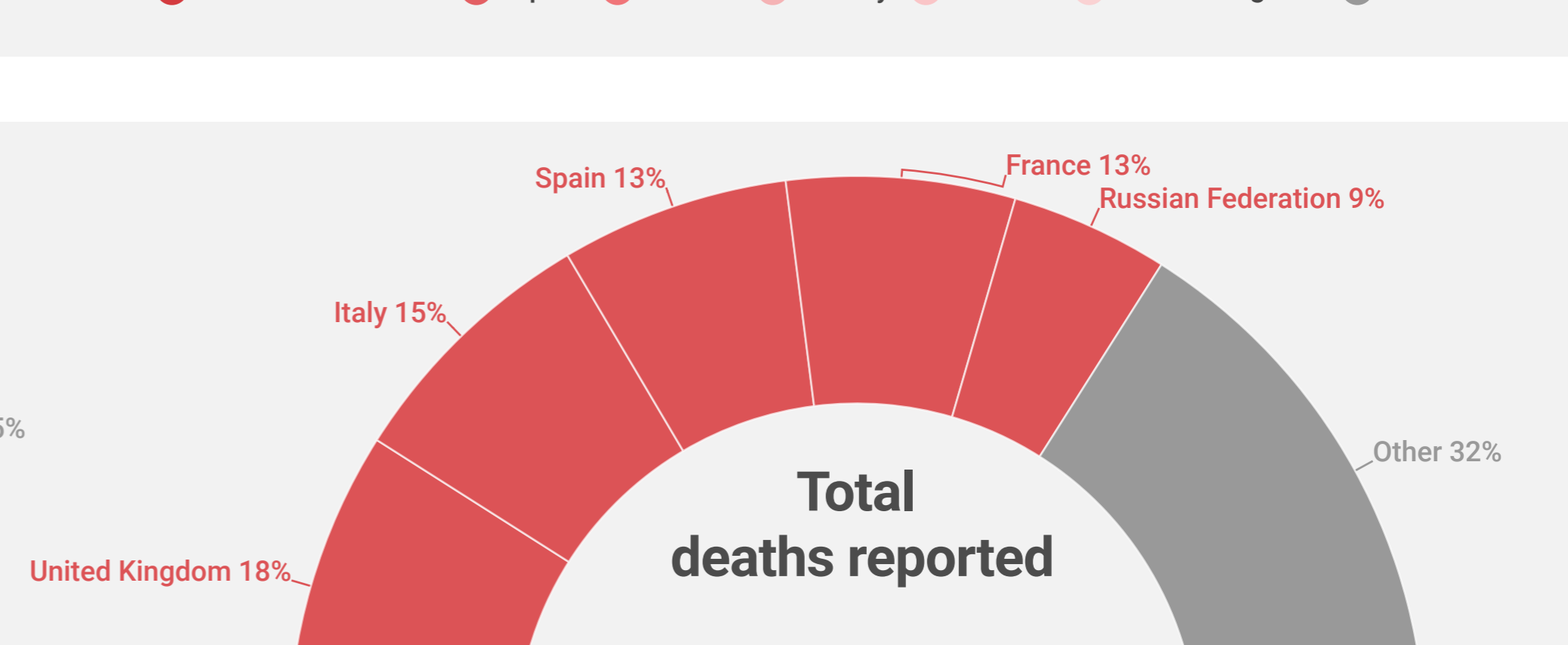
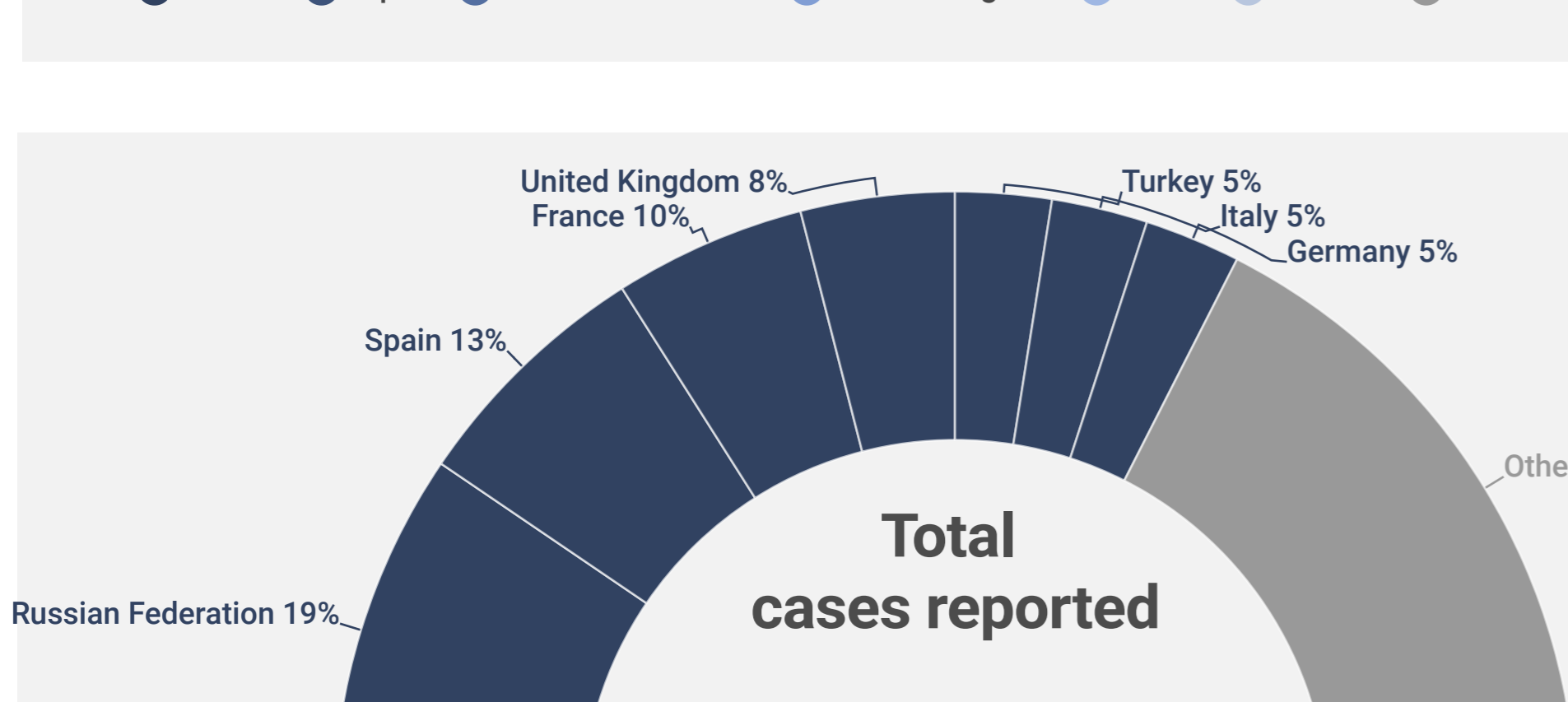
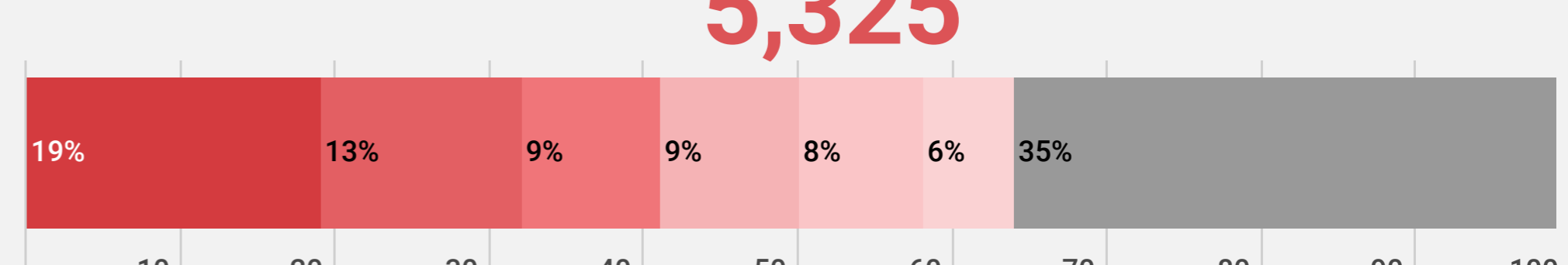
New cases (week 40/2020)

520,035



New deaths (week 40/2020)

5,325



Note: Reported cases and/or deaths from IHR States Parties may be subject to retrospective adjustments. Data as of 30 September 2020

88%

of all deaths

were in persons aged $\geq 65+$

56%

of all deaths

were in men

95%

of all deaths

had at least 1 underlying condition

83%

of all deaths

had cardiovascular disease

For more detailed information see: [WHO Global situation reports](#) [WHO Global situation dashboard](#)

Figure 1: Number of COVID-19 cases (N=6,248,800) and deaths (N=240,736) by reporting week

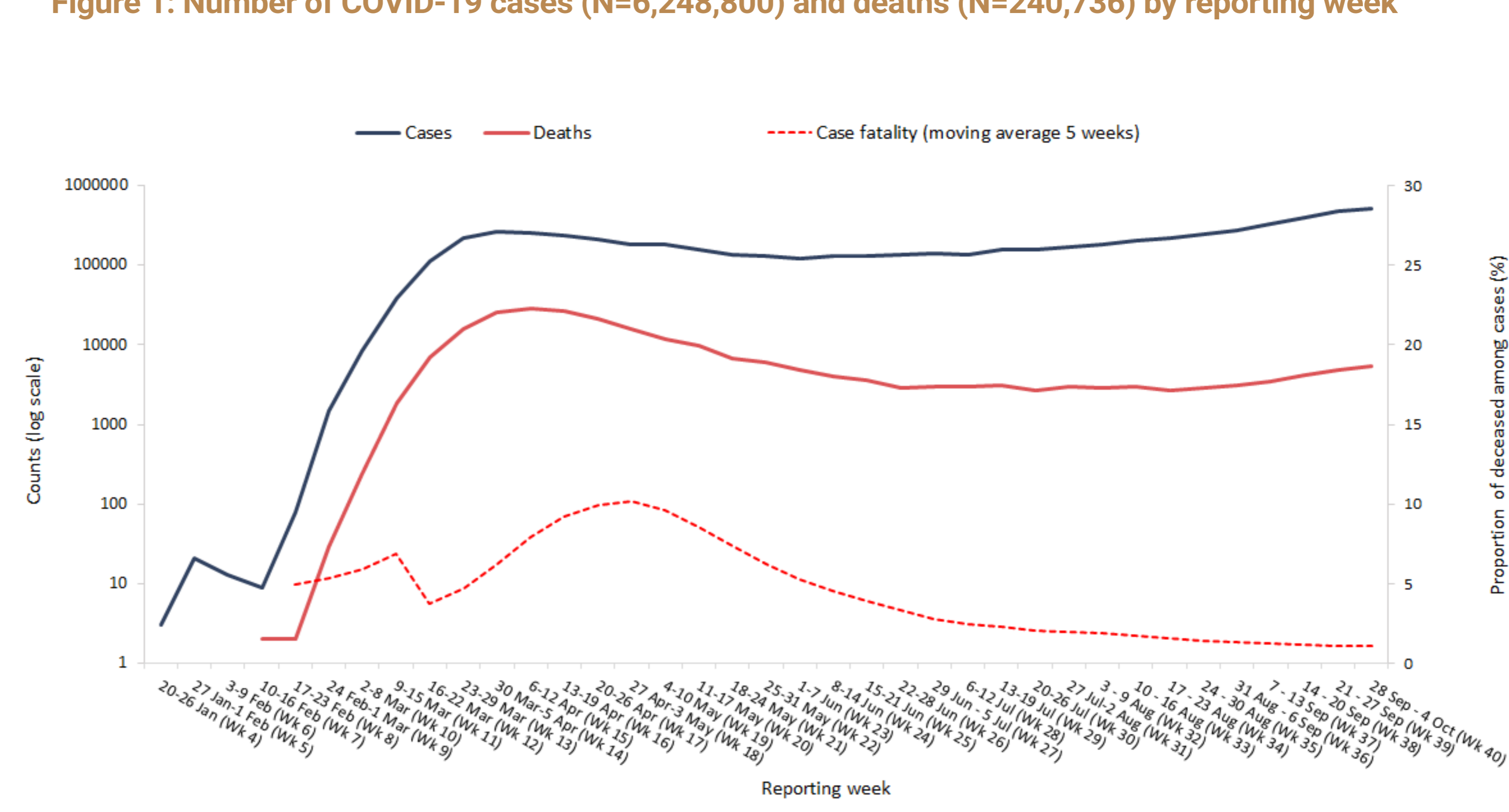


Figure 2A. COVID-19 incidence per 100,000 population and number of deaths by country for week 40

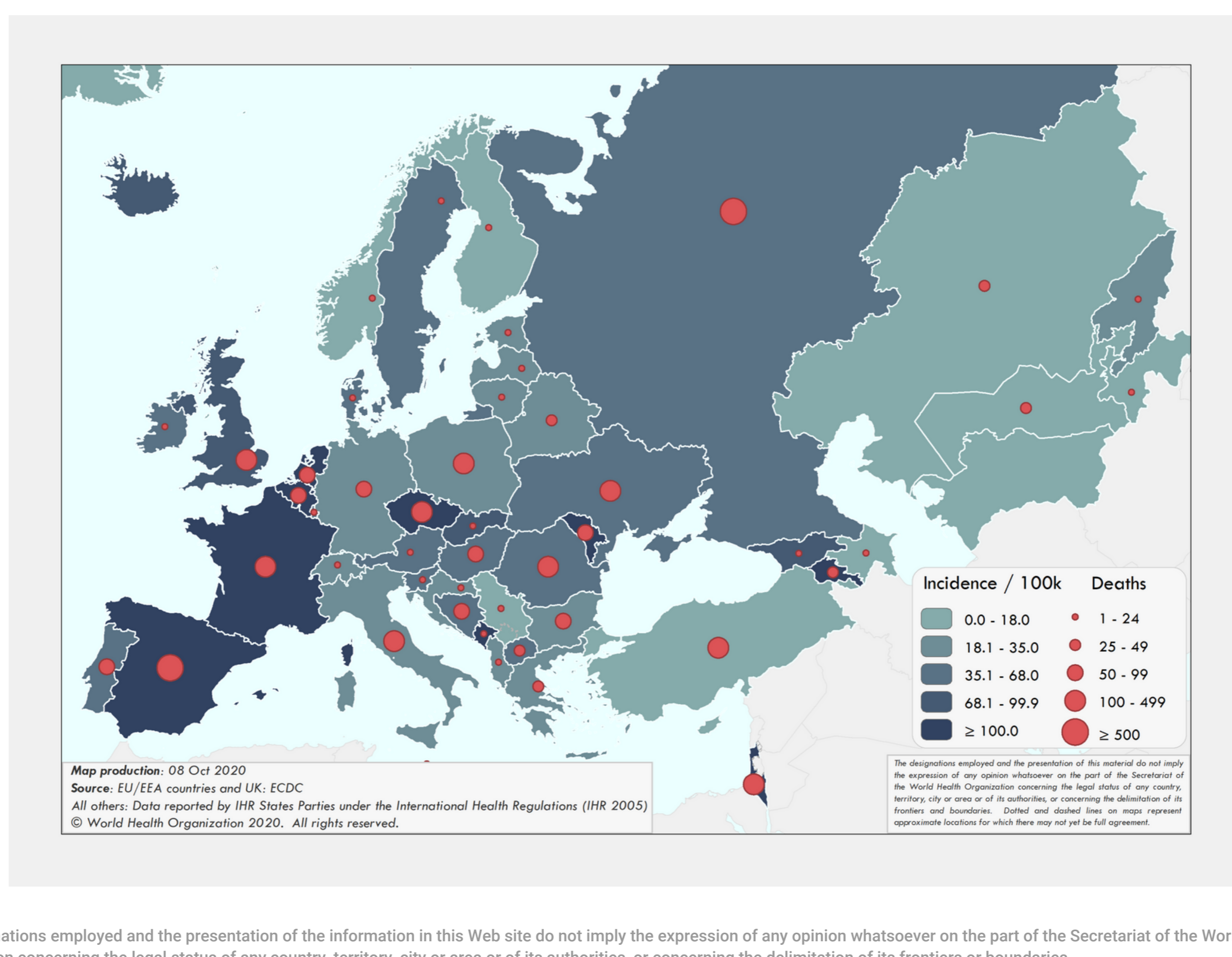


Figure 2B. COVID-19 cumulative incidence per 100,000 population and number of deaths by country

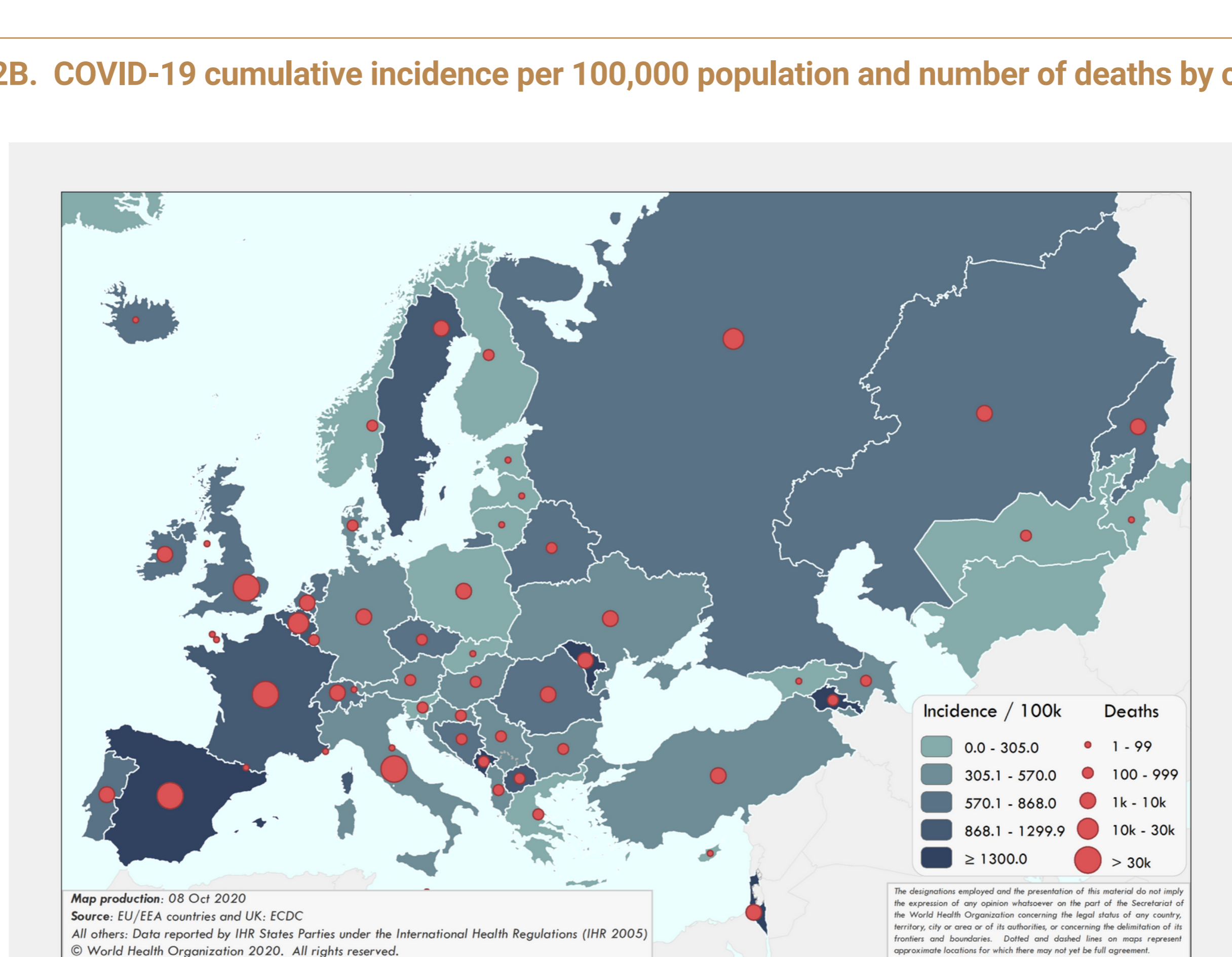
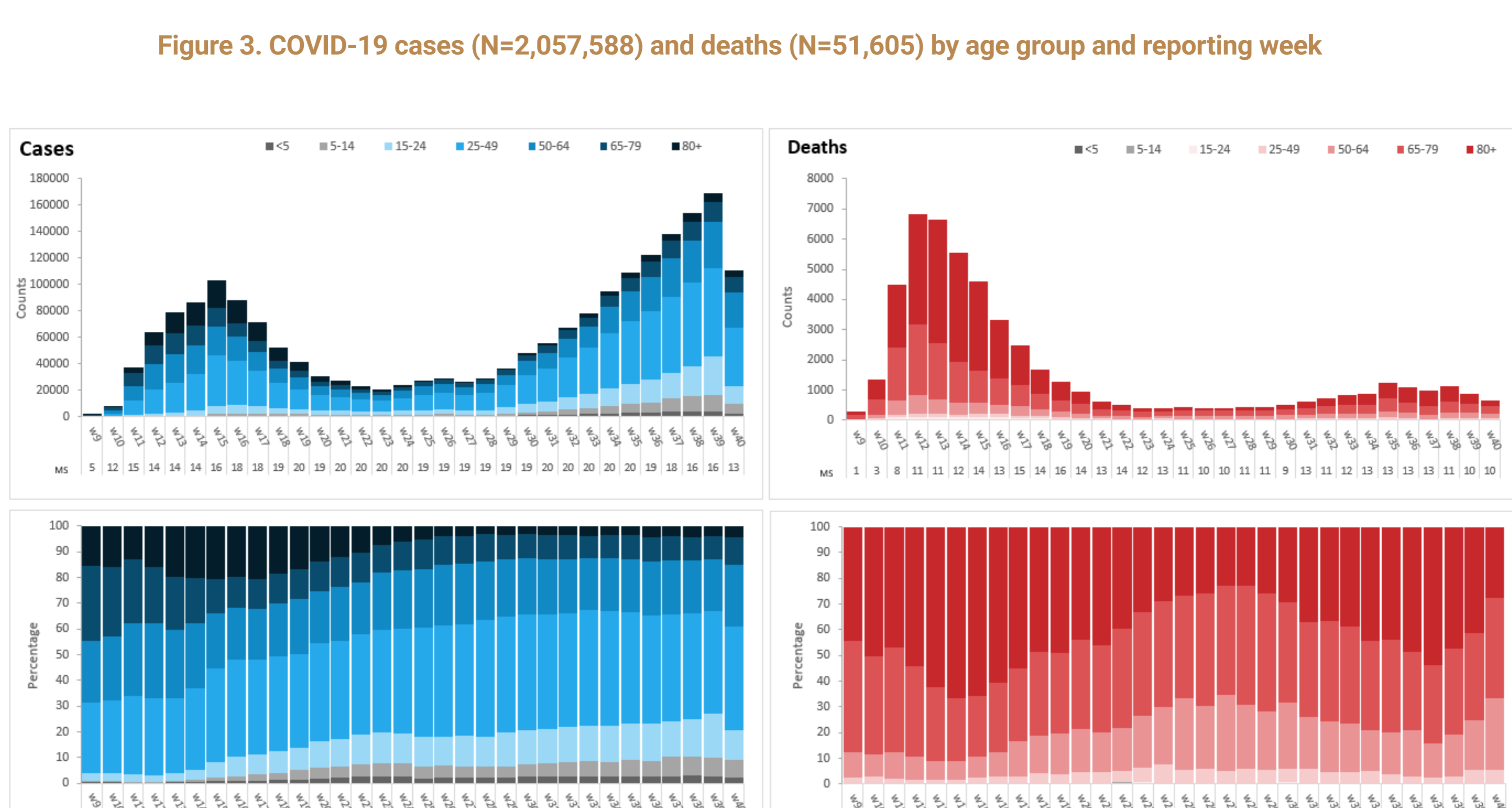


Table 1. Characteristics of COVID-19 deaths

Characteristics	n	%	Total records with data available
Age in years, median (range)	81 (0-109)		121,947
Sex, male	67,751	56	120,311
At least one underlying condition	52,397	95	54,927
• cardiovascular disease	14,949	83	18,036
• diabetes	5,415	64	8,481
• lung disease	2,021	23	8,656
• neurological disease / dementia	2,233	21	10,879
• renal disease	889	24	3,727
• obesity	673	10	6,467
• liver disease	683	7	10,267
• immune disease	331	5	6,727
• other	1,431	20	7,307

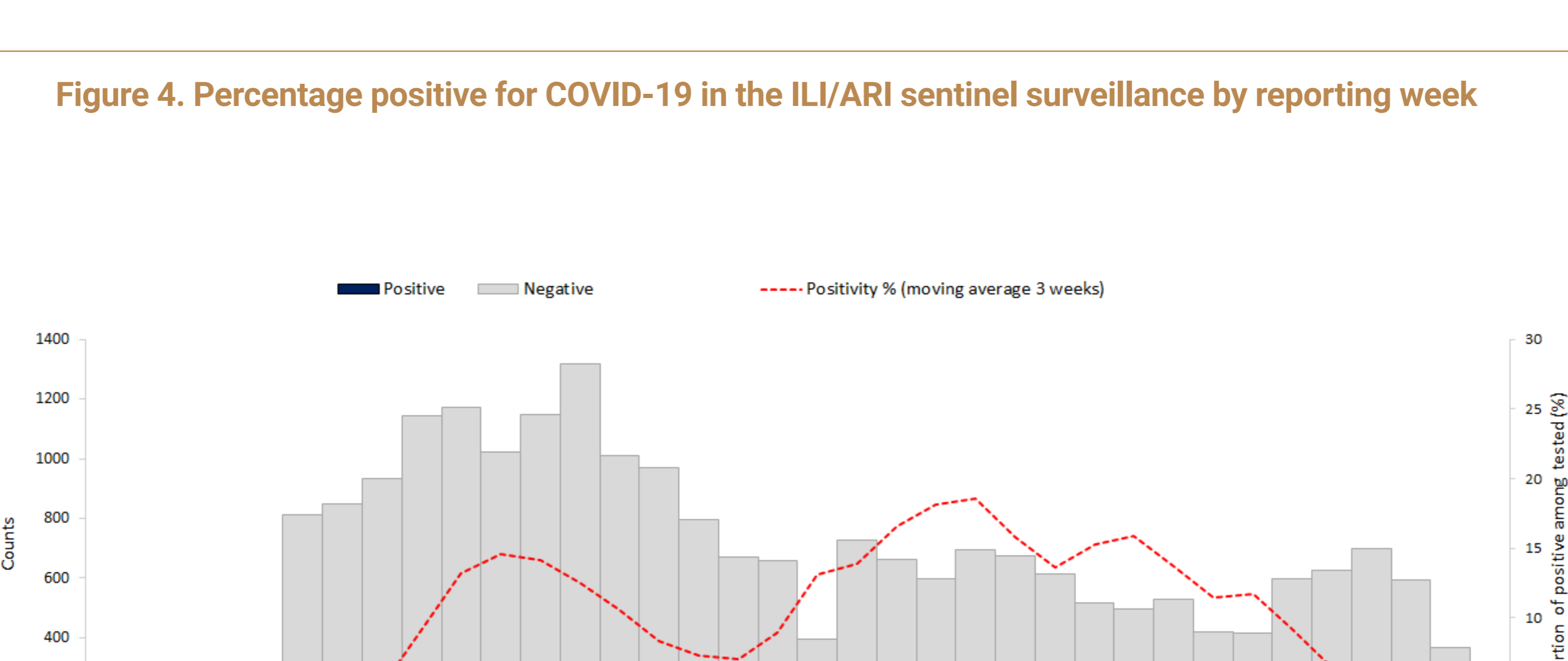
Source: Mortality database (n=121,990)

Figure 3. COVID-19 cases (N=2,057,588) and deaths (N=51,605) by age and reporting week



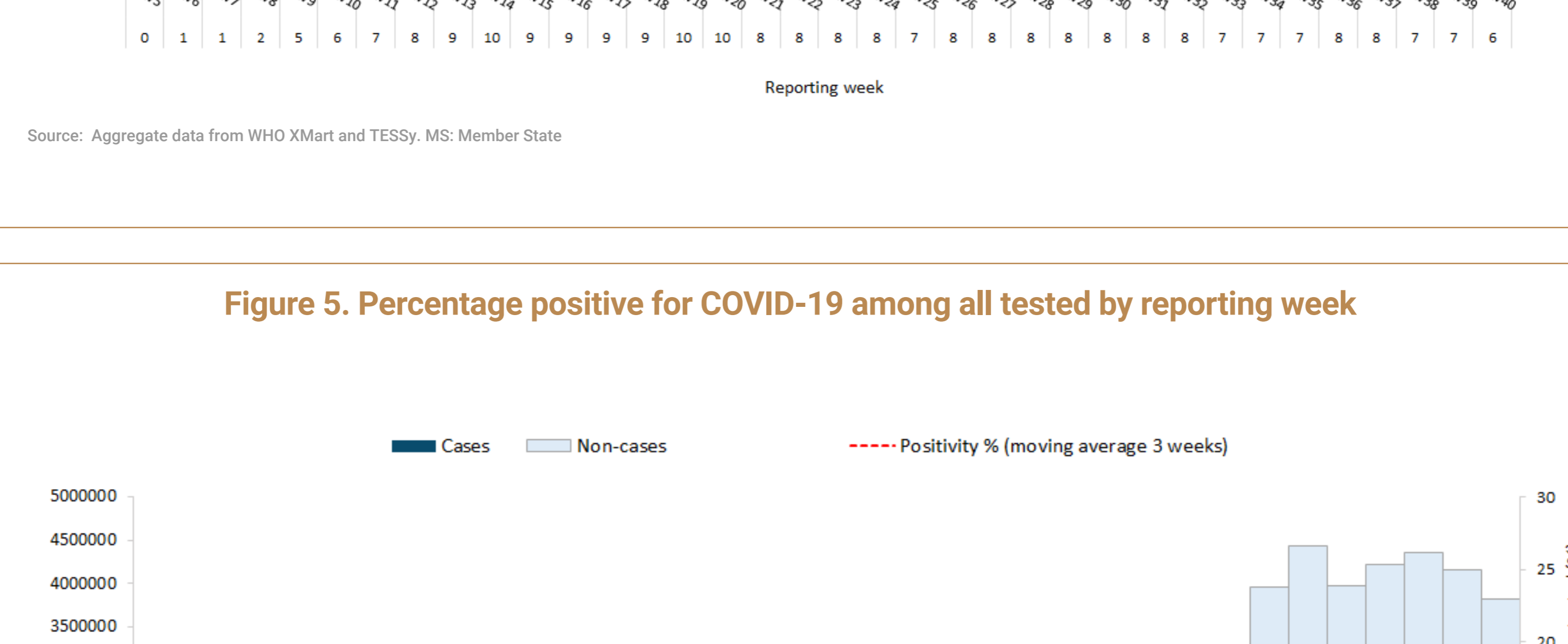
Source: Aggregate data from TESSy, MS: Member State

Figure 4. Percentage positive for COVID-19 in the ILI/ARI sentinel surveillance by reporting week



Source: Aggregate data from WHO XMart and TESSy, MS: Member State

Figure 5. Percentage positive for COVID-19 among all tested by reporting week



Source: Aggregate data from WHO XMart and TESSy. Note: Member States that report cases only (no testing data) are not included. MS: Member State