

Best viewed using Chrome, Safari or Internet Explorer 9 or higher. If you are having trouble viewing this page please [click here](#) for the alternative viewer.

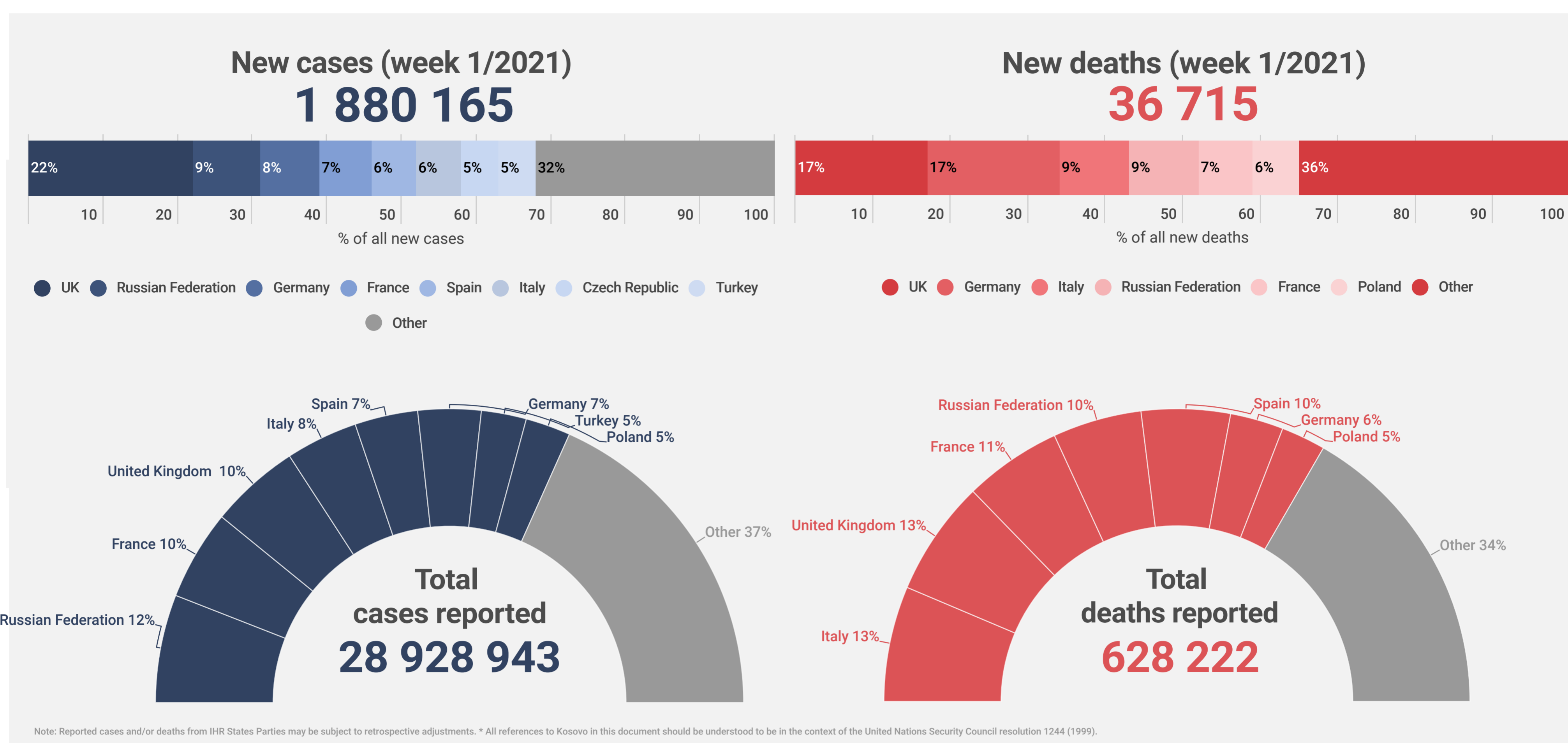
Key points

Week 1/2021 (4 - 10 Jan 2021)

- The number of cases reported in the Region increased by 12.6% to 1 880 165 in week 1/2021 (from 1 642 972 in week 53/2020)
- 67% (1 088 144) of the cases reported in week 1/2021 were reported from eight countries: United Kingdom (22%; 417 620), Russian Federation (9%; 165 167), Germany (8%; 142 861), France (7%; 124 073), Spain (6%; 121 728), Italy (6%; 116 665), Czech Republic (5%; 90 684) and Turkey (5%; 85 083). The remaining cases (33%; 792 051) were reported by 54 countries and territories; each accounted for <5% of the total cases reported in week 1/2021
- The crude incidence continues to vary across the region with a range from 0.3 per 100,000 population in Tajikistan to 2400 per 100,000 population in United Kingdom in week 1/2021
- Nine countries and territories had a crude incidence of ≥ 500 per 100 000 population in week 1/2021: United Kingdom (2400), Ireland (897), Czech Republic (848), Slovenia (682), Israel (582), San Marino (552), Andorra (544), Montenegro (519) and Portugal (511) (Figure 2A). A total of 24 countries had a crude incidence of ≥ 200 per 100 000 population in week 1/2021
- The 14-day cumulative incidence increased by $\geq 10\%$ in week 1/2021 in 22 countries and territories in the Region; an increase of $\geq 50\%$ was observed in fifteen of these countries and territories: Ireland, Isle Of Man, Gibraltar, Israel, Monaco, Malta, Norway, United Kingdom, Czech Republic, Portugal, Cyprus, Faroe Islands, Spain, Andorra and Iceland (see [EURO COVID-19 Dashboard](#) for recent trends)
- The number of deaths in the Region in week 1/2021 increased 8% to 36 715 (from 33 762 in week 53/2020) (Figure 1). The proportion of reported cases that died was 2.0% in week 1/2021
- 65% (21 772) of the deaths reported in week 1/2021 were reported by United Kingdom (17%; 6 298), Germany (17%; 6 071), Italy (9%; 3 409), Russian Federation (9%; 3 331), France (7%; 2 678) and Poland (6%; 2 070). The remaining deaths (35%; 12 858) were reported from 47 countries and territories; each accounted for <5% of the total deaths reported in week 1/2021
- Community-transmission was reported by 38 countries and territories, 16 countries and territories reported cluster transmission, while 4 countries and territories reported sporadic transmission in week 1/2021
- For an interactive sub-national view of the recent COVID-19 situation in the WHO-EURO Region [WHO-EURO COVID-19 Subnational Explorer](#)

Summary overview

- The cumulative cases across the Region increased 7% to 28 928 943 cases in week 1/2021 (from 27 048 778 cases in week 53/2020) and cumulative deaths increased by 6.2% to 628 222 deaths in week 1/2021 (from 591 507 in week 53/2020)
- As of week 1/2021, 63% (18 343 302) of cases were reported from the Russian Federation (12%; 3 401 954), United Kingdom (10%; 3 017 409), France (10%; 2 767 312), Italy (8%; 2 257 866), Spain (7%; 2 101 932), Germany (7%; 1 908 527), Turkey (5%; 1 502 780) and Poland (5%; 1 385 522). The remaining cases (37%; 10 585 641) were reported by 45 countries and territories; each accounted for <5% of the total cases reported until week 1/2021
- In week 1/2021, of countries that reported data on genetically characterized SARS-CoV-2 viruses, specific variants were observed in Finland, Portugal, Romania and Sweden (12 "VOC 202012/01" in Finland, 7 "VOC 202012/01" in Portugal, 1 "VOC 202012/01" and 3 "S gene deletion" in Romania and 4 "VOC 202012/01" and 1 "501V2" in Sweden).
- As of 10 January 2021, eight countries and territories in the Region had an effective reproductive number significantly over 1: Ireland, Gibraltar, Malta, Israel, United Kingdom, Portugal, Slovenia and Czech Republic (See [EpiForecasts](#) and the CMMID COVID working group COVID-19 Global Summary for latest estimates)
- 17 countries in the Region each reported a cumulative incidence of ≥ 5000 cases per 100,000 population: Andorra (11 129), UK (8 962), Montenegro (8 398), San Marino (7 825), Czech Republic (7 775), Luxembourg (7 775), Slovenia (6 700), Liechtenstein (6 257), Georgia (5 985), Lithuania (5 786), Belgium (5 765), Israel (5 649), Switzerland (5 561), Armenia (5 481), Croatia (5 326), Serbia (5 140) and the Netherlands (5 065) (Figure 2B)
- As of week 1/2021, 66% of cumulative deaths (412 688) were reported from UK (13%; 80 868), Italy (12%; 78 394), France (11%; 67 599), Russian Federation (10%; 61 837), Spain (8%; 52 458), Germany (6%; 40 343) and Poland (5%; 31 189). The remaining deaths (34%; 215 534) were reported by 51 countries and territories; each accounted for <5% of the total cases reported until week 1/2021
- 18.2% of cases were in persons aged ≥ 65 years in week 1/2021, a decrease from 36% in week 14/2020, while the percentage of fatal cases aged ≥ 65 years was 89% in week 1/2021 (compared to 91% in week 14/2020) (Figure 3)
- The latest weekly pooled EuroMOMO estimates show a substantial increased excess all-cause mortality overall for the participating European countries, coinciding with a reported increase in COVID-19 cases in several countries. This excess mortality is driven by a very substantial excess mortality in some countries, while other countries see normal mortality levels. The increased excess all-cause mortality is primarily seen among persons aged 45 years and older.
- In week 1/2021, 16 countries reported a total of 644 tests and 104 detections (16.1%) of SARS-CoV-2 in persons with influenza-like illness (ILI) in primary care sentinel surveillance (Figure 4)
- Overall, there were 879 816 COVID-19 cases among the total of 9 223 528 tests (9.5%) reported to have been performed in 32 countries in week 1/2021 (Figure 5)



For more detailed information see: [WHO Global situation reports](#) [WHO Global situation dashboard](#)

Figure 1: Number of COVID-19 cases (N=28 928 943) and deaths (N=628 222) by reporting week

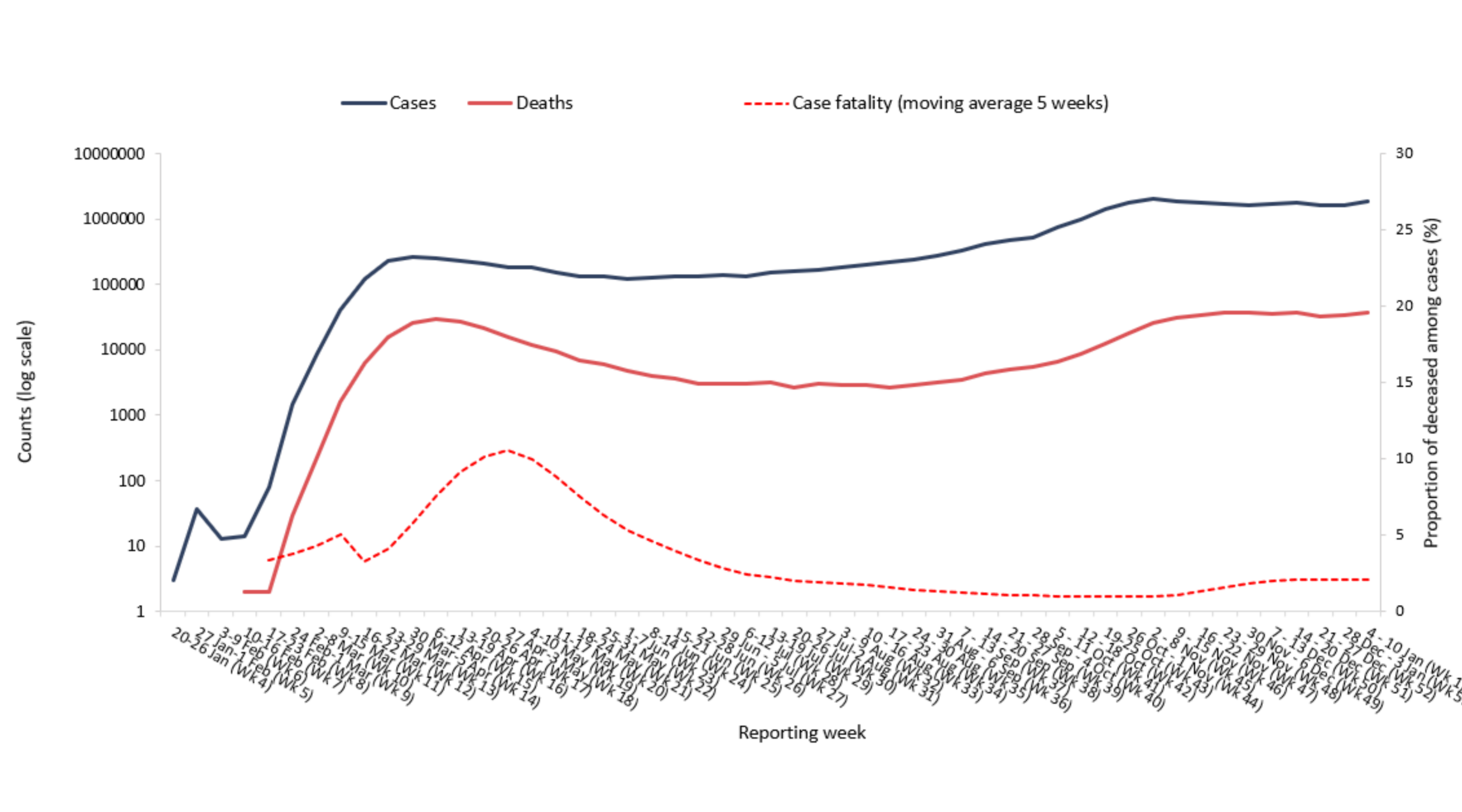


Figure 2A. COVID-19 incidence per 100,000 population and number of deaths by country for week 1/2021

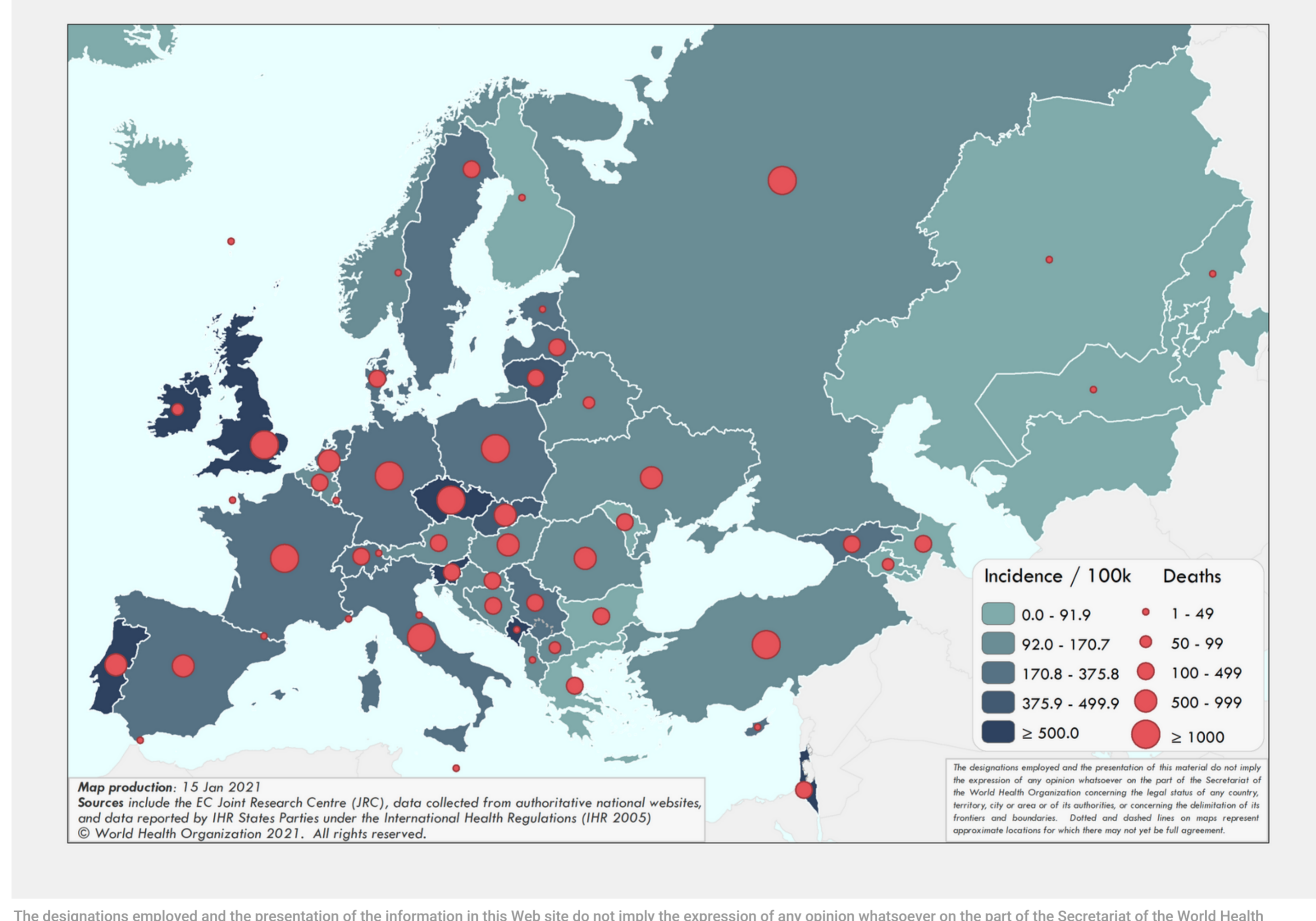


Figure 2B. COVID-19 cumulative incidence per 100,000 population and number of deaths by country

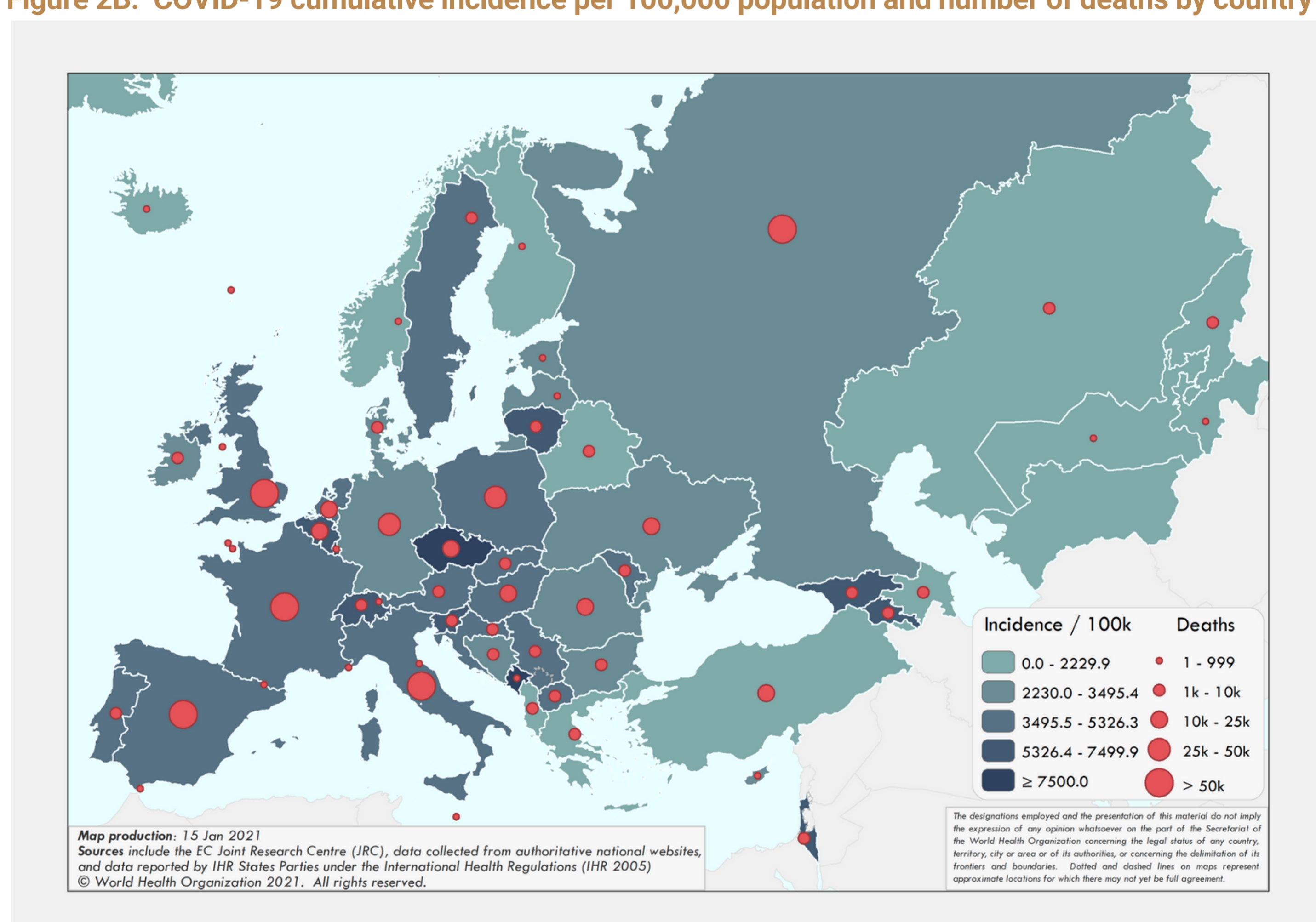
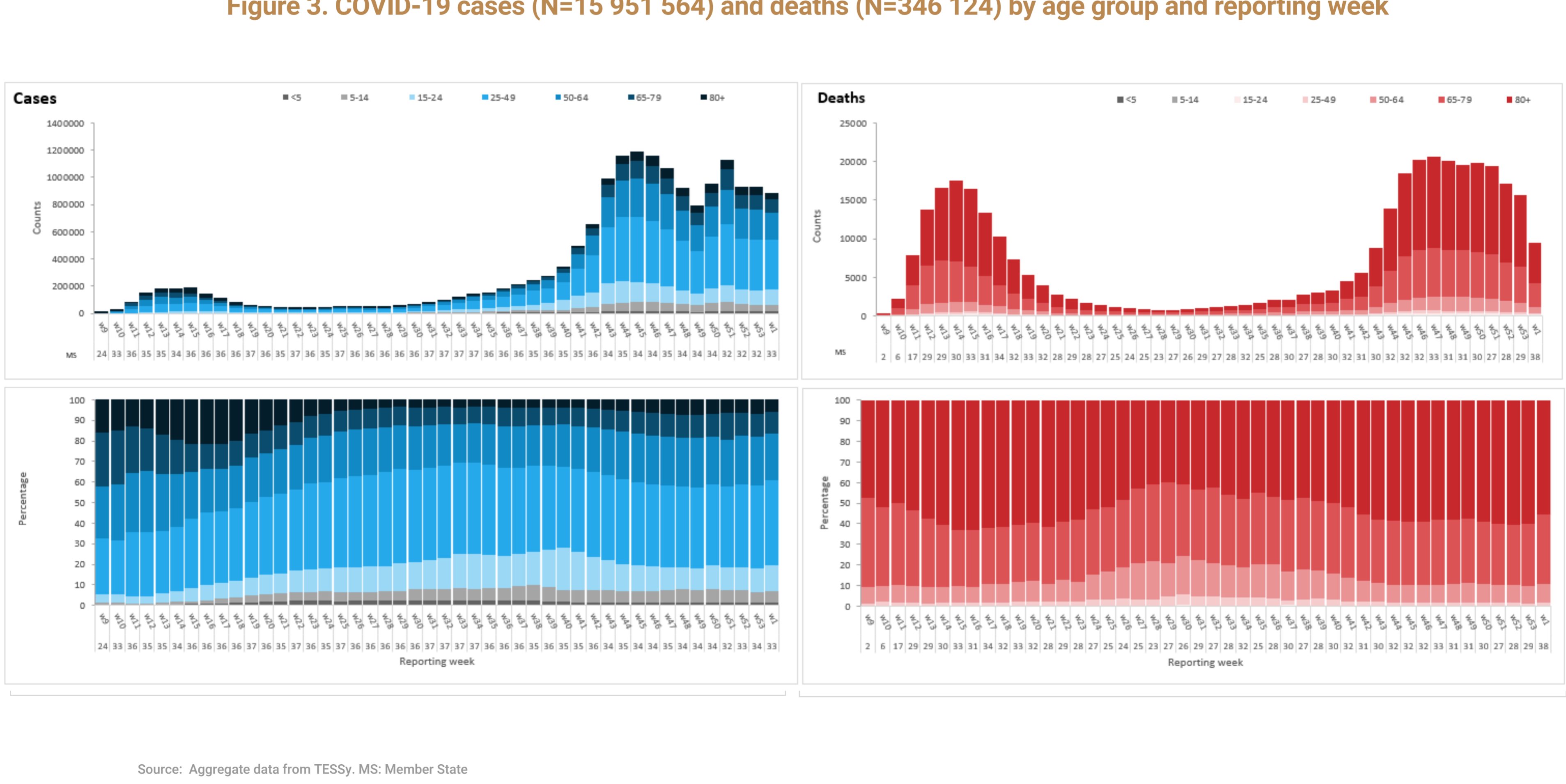
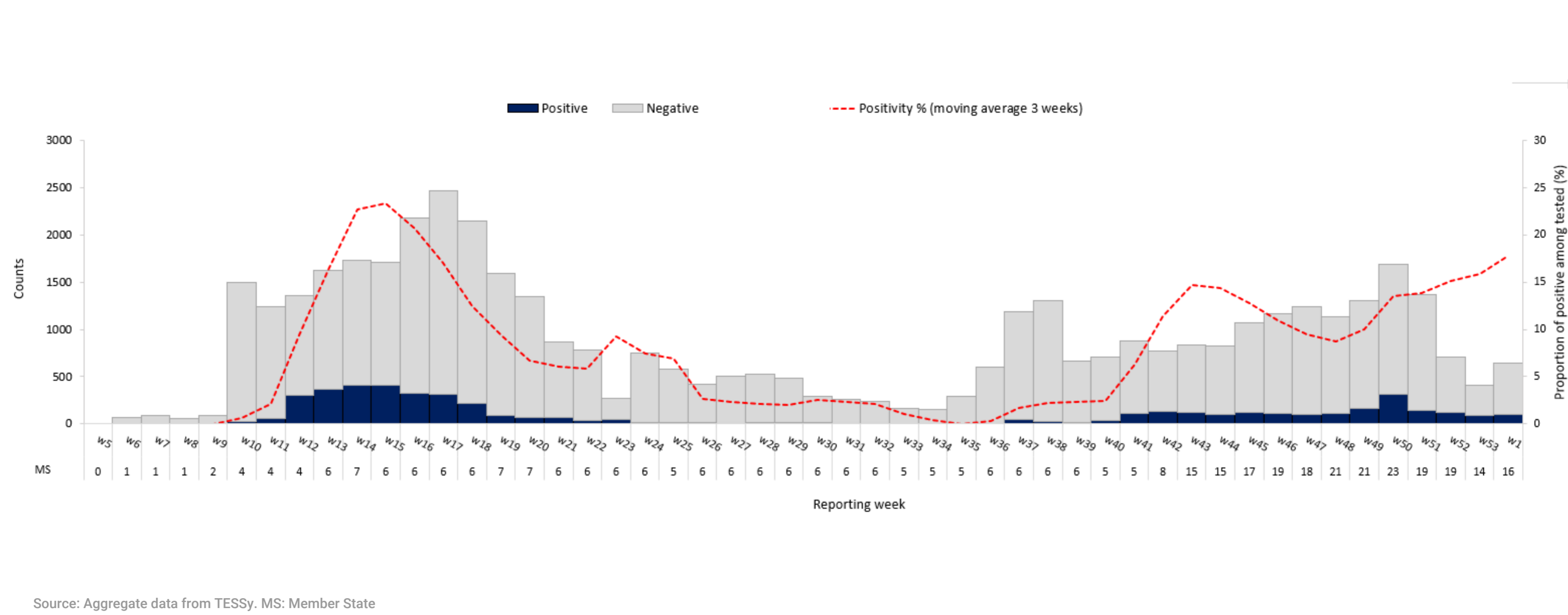


Figure 3. COVID-19 cases (N=15 951 564) and deaths (N=346 124) by age group and reporting week



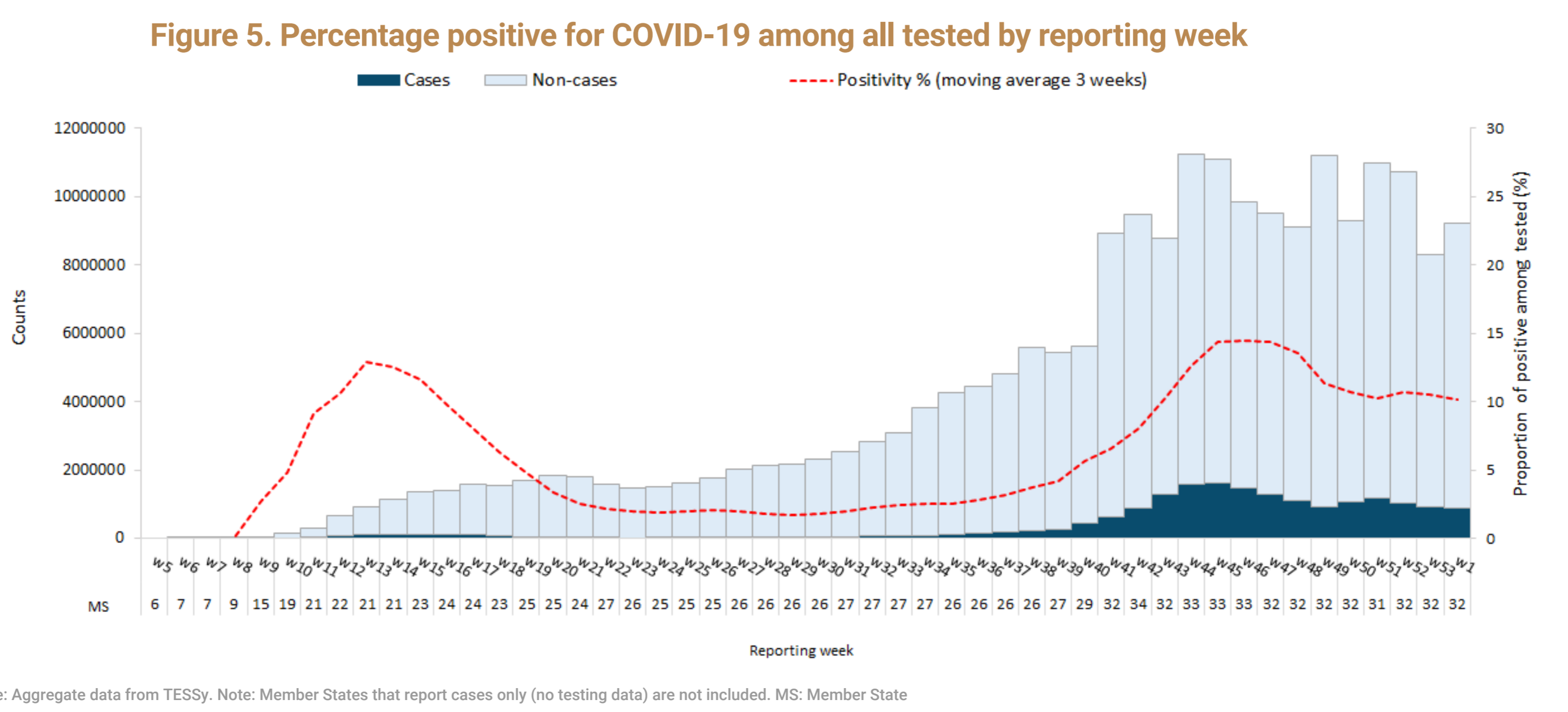
Source: Aggregate data from TESSy. MS: Member State

Figure 4. Percentage positive for COVID-19 in the ILI/ARI sentinel surveillance by reporting week



Source: Aggregate data from TESSy. MS: Member State

Figure 5. Percentage positive for COVID-19 among all tested by reporting week



Source: Aggregate data from TESSy. Note: Member States that report cases only (no testing data) are not included. MS: Member State