

# WHO Epidemiological Brief



A monthly publication on vaccine-preventable diseases and immunization data and analysis

## Highlighting in the WHO European Region:

- Update on measles in the European Region
- Update on rubella in the European Region

### Summary

The European Region faces another challenging year in terms of measles cases, with more than 13 000 cases already reported from January to April 2012. Measles incidence has decreased on a regional level since the beginning of the year, but Ukraine continues to experience a large outbreak with 8 200 cases reported in period January - April. Several other countries are also reporting an increased number of cases.

More than 15 000 rubella cases have been reported in the Region this year, with most cases occurring in Romania, Poland, Ukraine and the Russian Federation. Cases are decreasing in Romania and increasing in Ukraine and the Russian Federation.

Surveillance data reported by Member States continues to suffer from challenges in timeliness and completeness, both for measles and rubella data.

## Update on measles and rubella in the European Region

### Measles in 2012

Member States of the European Region of the World Health Organization reported 13 233 cases of measles in the first four months of 2012. Measles cases were reported from 32 Member States in 2012. Most of the cases were reported by Ukraine (8 200), Romania (1 766), the Russian Federation (1 470), France (476), United Kingdom (440), Italy (339) and Spain (229).

Based on surveillance information, the Region faces another challenging year. Measles incidence has, however, decreased since February as the number of

monthly reported cases fell from 4 490 in January to 2 713 in April.

Taking into account reporting delays for March and April, January 2012 was not followed with an increase number of cases in consecutive months. Although the total number of measles cases for January 2012 was higher than the same month in 2010 and 2011, in those years cases increased significantly after the month of January, while in 2012 the Region has seen a decrease in cases per month since January. Assuming this trend continues, the total number of cases in 2012 should not exceed the total number of cases in 2011, when Member States reported 37 688 measles (Figure 1).

Completeness and timelines of surveillance data reporting from Member States to international organizations remains suboptimal. Bosnia and Herzegovina, Montenegro and Turkey have not provided any surveillance reports since the beginning of 2012. Furthermore, countries continuously update data as new information from case investigations becomes available. Therefore, a report one month may look different from the next month due to this update in information by the Member State. A total of 22 countries reported measles by month in January, 21 in February, 23 in March and 19 in April. That said, the possibility of measles re-emerging in currently unaffected countries still exists, due to susceptible population in the Region.

### Measles in April 2012 (monthly report):

A total of 2 713 measles cases was reported in April (19 countries reporting cases, 24 "zero" reports, 8 countries no report). An outbreak continues in Ukraine, with the total number of cases with onset in April (1 797) lower than in March (2 095). The number of cases is increasing in Romania (85 cases in March, 317 in April), Belgium (3 in March, 31 in April) and Kazakhstan (8 in March, 20 in April). Estonia (4) and The Republic of Moldova (1) reported their first measles cases of the year during April.

The regional measles database is missing April data from 8 of the 51 Member States that provide monthly reports (two Member States do not report on a monthly basis). The Regional Office is following-up with Member States for verification and updating of surveillance data.

## Rubella in 2012

As of 1 June, 15 216 rubella cases were reported in 2012 by 19 of the 41 Member States reporting monthly rubella data. Monthly data from 12 Member States are not available. Timeliness and completeness of rubella reporting faces similar challenges to those faced with measles reporting.

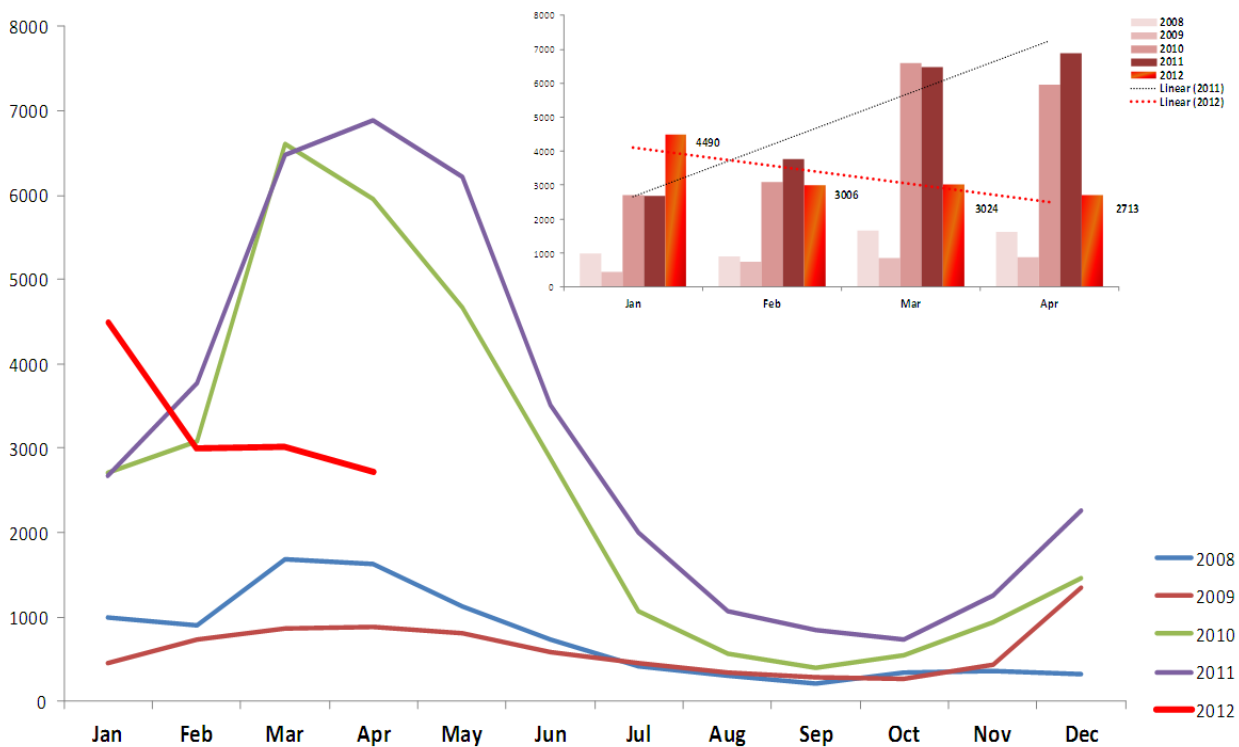
In the first four months of 2012, most rubella cases are reported from Romania (12 476), Poland (1 148 for January – March), Ukraine (942 for February – April) and the Russian Federation (530).

## Rubella in April 2012 (monthly report):

A total of 10 Member States reported 2 509 rubella cases with onset in April 2012. The highest number of cases is reported from Romania (1 874) where there has been a significant decrease in cases since February and March (4 051 and 5 701, respectively). Ukraine reported 432 cases of rubella in April, an increase from the previous month. A similar increase in rubella cases is being experienced in the Russian Federation (from 166 in March to 178 in April). April surveillance data from Poland is still missing.

Reports for April were received from 38 Member States, with 28 of them providing a “zero” report (no cases with onset in April).

**Figure 1: Number of reported measles cases in the European Region by month in period 2008-2012 and trends for first four months in 2011 and 2012**



Monthly Summary Table 1: Confirmed measles cases for last 12 months, May 2011 — April 2012 (data as of 1 June 2012)

Country	Total Population <sup>1</sup>	Incidence Rate per 1 million population May 11-Apr 12	Total Cases May 11-Apr 12	2011 -2012 (Year and month of Rash onset)												Month of last report
				May	Jun	Jul	Aug	Sep	Oct	Nov	Dec	Jan	Feb	Mar	Apr	
Albania	3 214 691	0.0	0	0	0	0	0	0	0	0	0	0	0	0	0	Apr
Andorra	67 722	0.0	0	0	0	0	0	0	0	0	0	0	0	0	-	Mar
Armenia	3 098 784	0.0	0	0	0	0	0	0	0	0	0	0	0	0	0	Apr
Austria	8 405 570	8.7	73	18	33	16	4	2	0	0	0	0	0	0	0	Apr
Azerbaijan	9 309 301	0.1	1	0	0	0	0	0	0	0	0	0	0	1	0	Apr
Belarus	9 568 453	6.1	58	16	29	4	0	0	0	0	1	5	0	3	0	Apr
Belgium	10 741 129	63.9	686	259	192	89	21	21	6	25	3	21	15	3	31	Apr
Bosnia and Herzegovina	3 755 478	1.3	5	0	0	0	0	4	1	0	0	-	-	-	-	No Report
Bulgaria	7 449 799	2.7	20	18	1	0	0	1	0	0	0	0	0	0	0	Apr
Croatia	4 397 338	1.1	5	0	3	2	0	0	0	0	0	0	0	0	-	Mar
Cyprus	1 116 113	0.9	1	0	0	0	0	0	0	0	0	0	1	0	0	Apr
Czech Republic	10 522 894	1.6	17	4	1	1	1	0	0	0	2	3	1	0	4	Apr
Denmark	5 570 660	3.9	22	17	2	2	0	0	0	0	0	1	0	0	0	Apr
Estonia	1 340 887	4.5	6	1	1	0	0	0	0	0	0	0	0	0	4	Apr
Finland	5 381 049	5.6	30	12	3	0	6	0	1	3	0	0	2	0	3	Apr
France	63 103 600	73.9	4663	2267	927	408	148	90	81	122	144	107	126	139	104	Apr
Georgia	4 330 693	14.3	62	11	6	7	17	6	7	1	1	1	0	3	2	Apr
Germany	82 140 752	10.3	843	433	168	112	37	27	11	22	5	12	10	6	0	Apr
Greece	11 392 891	1.3	15	10	2	3	0	0	0	0	0	0	0	0	0	Apr
Hungary	9 964 621	0.7	7	0	0	0	0	0	0	0	5	0	1	0	1	Apr
Iceland	324 050	0.0	0	0	0	0	0	0	0	0	0	0	0	0	0	Apr
Ireland	4 527 814	64.7	293	12	30	42	72	60	34	13	7	4	7	7	5	Apr
Israel	7 545 524	11.3	85	3	2	0	0	21	10	4	2	3	14	21	5	Apr
Italy	60 686 264	55.1	3343	1303	849	416	176	99	61	56	44	59	122	85	73	Apr
Kazakhstan	16 240 343	2.5	40	0	0	0	0	0	0	0	0	1	11	8	20	Apr
Kyrgyzstan	5 405 749	35.1	190	76	89	16	3	2	4	0	0	0	0	0	0	Apr
Latvia	2 242 757	1.8	4	0	0	1	0	0	0	0	0	1	2	0	0	Apr
Lithuania	3 311 227	1.8	6	2	4	0	0	0	0	0	0	0	0	0	0	Apr
Luxembourg	514 108	11.7	6	2	2	0	1	0	0	0	0	0	0	1	0	Apr
Malta	418 134	4.8	2	0	0	0	2	0	0	0	0	0	0	0	0	Apr
Monaco	37 785	-	0	0	0	0	0	0	0	0	0	0	0	0	0	No Report
Montenegro	632 157	1.6	1	0	1	0	0	0	0	0	0	0	0	0	0	No Report
Netherlands	16 647 522	1.0	17	11	5	0	1	0	0	0	0	0	0	-	-	Feb
Norway	4 917 917	2.6	13	3	4	1	2	1	1	0	0	0	0	1	0	Apr
Poland	38 307 380	0.8	29	5	4	6	4	4	1	0	0	1	3	1	-	Mar
Portugal	10 679 646	0.2	2	0	0	0	0	0	0	0	1	1	0	0	0	Apr
Republic of Moldova	3 555 765	0.3	1	0	0	0	0	0	0	0	0	0	0	0	1	Apr
Romania	21 445 408	223.2	4786	520	460	385	292	248	151	393	571	1256	108	85	317	Apr
Russian Federation	142 822 544	15.1	2155	20	42	22	7	9	58	211	316	602	382	323	163	Apr
San Marino	29 332	-	0	0	0	0	0	0	0	0	0	-	-	-	-	No Report
Serbia	9 842 939	7.5	74	37	25	6	4	2	0	0	0	0	0	0	0	Apr
Slovakia	5 470 405	0.2	1	1	0	0	0	0	0	0	0	0	0	0	0	Apr
Slovenia	2 035 215	10.8	22	1	7	12	0	0	0	0	0	1	0	1	0	Apr
Spain	46 366 600	49.6	2299	667	345	248	146	185	168	203	108	59	64	68	38	Apr
Sweden	9 427 367	3.8	36	4	1	2	1	0	1	3	0	2	17	1	4	Apr
Switzerland	7 694 595	33.1	255	123	57	28	10	2	3	1	4	2	3	11	11	Apr
Tajikistan	6 982 372	0.6	4	0	0	0	0	0	0	0	0	0	0	4	0	Apr
The former Yugoslav Republic of Macedonia	2 063 819	54.3	112	74	24	6	2	0	0	0	2	0	3	1	0	Apr
Turkey	73 689 680	0.2	16	5	5	6	0	0	0	0	0	0	0	0	0	Apr
Turkmenistan	5 099 686	0.0	0	0	0	0	0	0	0	0	0	0	0	-	-	Feb
Ukraine	45 242 024	210.2	9511	10	0	44	45	13	59	131	1009	2309	1999	2095	1797	Apr
United Kingdom	62 439 828	18.3	1143	186	133	105	60	54	73	63	29	39	115	156	130	Apr
Uzbekistan	27 802 722	5.5	152	90	48	14	0	0	0	0	0	0	0	0	0	Apr
<b>Total/Averages</b>	<b>899 321 103</b>	<b>34.59</b>	<b>31112</b>	<b>6221</b>	<b>3505</b>	<b>2004</b>	<b>1062</b>	<b>851</b>	<b>731</b>	<b>1251</b>	<b>2254</b>	<b>4490</b>	<b>3006</b>	<b>3024</b>	<b>2713</b>	

<sup>1</sup> Source: "World Population Prospects: The 2008 Revision", New York, United Nations and updates provided by Member States.

Monthly Summary Table 2. Classification of reported suspected measles cases, January—April 2012 (data as of 1 June 2012)

Country	Total Population <sup>1</sup>	Incidence Rate per 1 million population (Jan-Mar)	Total confirmed measles	Classification			Discarded	Importation <sup>3</sup>	Reporting			Surveillance Indicators <small>(Please click here to refer Annex 8 of MR Surveillance guideline)</small>		
				Lab confirmed	Epi-Link	Clinical <sup>2</sup>			Completeness	Timeliness	Month of last report	Laboratory investigation rate	detection rate	Source of infection
Albania	3 226 922	0.0	0	0	0	0	1	0	100%	100%	Apr	100.0%	0.03	100.0%
Andorra	67 726	0.0	0	0	0	0	0	0	75%	50%	Mar	-	0.00	-
Armenia	3 107 085	0.0	0	0	0	0	6	0	100%	100%	Apr	83.3%	0.19	100.0%
Austria	8 418 180	0.0	0	0	0	0	0	0	100%	100%	Apr	-	0.00	-
Azerbaijan	9 417 527	0.0	1	1	0	0	48	2	100%	100%	Apr	100.0%	0.51	98.0%
Belarus	9 536 760	0.6	8	8	0	0	0	2	100%	100%	Apr	100.0%	0.00	100.0%
Belgium	10 770 406	6.3	70	27	1	42	0	2	100%	100%	Apr	56.5%	NA	NA
Bosnia and Herzegovina*	3 747 213	-	-	-	-	-	-	-	-	-	No Report	-	NA	NA
Bulgaria	7 401 269	0.0	0	0	0	0	0	0	100%	100%	Apr	-	0.00	-
Croatia	4 388 603	0.0	0	0	0	0	0	0	25%	25%	Mar	-	0.00	-
Cyprus	1 128 260	0.9	1	1	0	0	0	0	100%	100%	Apr	100.0%	0.00	0.0%
Czech Republic	10 547 860	0.4	8	8	0	0	0	4	75%	75%	Apr	100.0%	0.00	62.5%
Denmark	5 589 464	0.0	1	1	0	0	0	1	100%	100%	Apr	100.0%	0.00	100.0%
Estonia	1 339 829	1.5	4	4	0	0	0	2	100%	100%	Apr	100.0%	NA	NA
Finland	5 397 248	0.7	5	4	0	1	0	1	100%	75%	Apr	80.0%	0.00	20.0%
France	63 417 636	7.3	476	200	48	228	0	14	100%	100%	Apr	59.8%	NA	NA
Georgia*	4 305 661	1.4	6	0	0	6	8	0	100%	100%	Apr	57.1%	NA	NA
Germany	81 964 400	0.3	28	20	2	6	0	7	100%	100%	Apr	76.9%	0.00	100.0%
Greece	11 418 997	0.0	0	0	0	0	0	0	100%	100%	Apr	-	0.00	-
Hungary	9 947 105	0.0	2	2	0	0	0	2	100%	100%	Apr	100.0%	0.00	100.0%
Iceland	327 804	0.0	0	0	0	0	0	0	50%	50%	Apr	-	0.00	-
Ireland	4 579 823	4.8	23	4	1	18	0	1	100%	100%	Apr	54.5%	NA	NA
Israel*	7 672 910	5.6	43	1	0	42	0	0	100%	100%	Apr	2.3%	NA	NA
Italy	60 819 728	5.6	339	119	76	144	0	0	75%	75%	Apr	50.6%	NA	NA
Kazakhstan*	16 407 491	2.4	40	40	0	0	0	0	100%	100%	Apr	100.0%	NA	NA
Kyrgyzstan	5 463 941	0.0	0	0	0	0	33	0	25%	25%	Apr	87.9%	0.60	24.2%
Latvia	2 233 986	0.9	3	3	0	0	0	1	100%	100%	Apr	100.0%	0.00	66.7%
Lithuania	3 296 148	0.0	0	0	0	0	0	0	75%	75%	Apr	-	0.00	-
Luxembourg	521 080	1.9	1	1	0	0	0	0	100%	100%	Apr	100.0%	NA	NA
Malta	419 402	0.0	0	0	0	0	0	0	100%	100%	Apr	-	0.00	-
Monaco	38 222	-	-	-	-	-	-	-	-	-	No Report	-	NA	NA
Montenegro*	632 737	-	-	-	-	-	-	-	-	-	No Report	-	NA	NA
Netherlands	16 694 725	0.0	0	0	0	0	0	0	50%	50%	Feb	-	0.00	-
Norway	4 951 344	0.0	1	1	0	0	0	1	100%	100%	Apr	100.0%	0.00	100.0%
Poland	38 315 208	0.1	5	1	0	4	0	0	75%	75%	Mar	40.0%	0.00	100.0%
Portugal	10 686 443	0.0	1	1	0	0	0	1	100%	100%	Apr	100.0%	0.00	100.0%
Republic of Moldova	3 532 010	0.3	1	1	0	0	0	0	25%	25%	Apr	100.0%	0.00	0.0%
Romania	21 397 044	82.5	1766	856	885	25	0	0	100%	100%	Apr	97.2%	NA	NA
Russian Federation	142 668 224	10.2	1470	1408	54	8	10	21	100%	100%	Apr	100.0%	NA	NA
San Marino	29 486	-	-	-	-	-	-	-	-	-	No Report	-	NA	NA
Serbia*	9 834 026	0.0	0	0	0	0	0	0	75%	50%	Apr	-	0.00	-
Slovakia	5 478 110	0.0	0	0	0	0	0	0	100%	100%	Apr	-	0.00	-
Slovenia	2 039 627	0.0	2	2	0	0	0	2	100%	100%	Apr	100.0%	0.00	100.0%
Spain	46 657 472	4.8	229	199	22	8	0	6	100%	100%	Apr	96.1%	NA	NA
Sweden	9 477 964	2.1	24	12	12	0	0	4	75%	75%	Apr	100.0%	NA	NA
Switzerland	7 723 812	2.6	27	22	0	5	14	7	100%	50%	Apr	73.2%	NA	NA
Tajikistan*	7 086 101	0.6	4	4	0	0	0	0	75%	75%	Apr	100.0%	0.00	0.0%
The former Yugoslav Republic of Macedonia*	2 066 356	1.9	4	2	0	2	0	0	100%	75%	Apr	50.0%	NA	NA
Turkey	74 546 664	0.0	0	0	0	0	0	0	100%	0%	Apr	-	0.00	-
Turkmenistan	5 164 039	0.0	0	0	0	0	0	0	50%	50%	Feb	-	0.00	-
Ukraine*	44 991 932	182.3	8200	857	0	7343	0	0	100%	25%	Apr	10.5%	NA	NA
United Kingdom	62 806 776	6.8	440	440	0	0	0	14	100%	100%	Apr	100.0%	NA	NA
Uzbekistan*	28 124 854	0.0	0	0	0	0	0	0	100%	25%	Apr	-	0.00	-
<b>Total/Averages</b>	<b>901 823 640</b>	<b>14.6</b>	<b>13233</b>	<b>4250</b>	<b>1101</b>	<b>7882</b>	<b>120</b>	<b>95</b>	<b>81.6%</b>	<b>74.1%</b>		<b>36.5%</b>	<b>0.01</b>	<b>32.0%</b>

Data source: Monthly aggregated and case-based data reported by Member States to WHO/Europe and ECDC/TESSy

<sup>1</sup> Source: "World Population Prospects: The 2008 Revision", New York, United Nations and updates provided by Member States.

<sup>2</sup> Cases with missing classification are classified as "Clinical".

<sup>3</sup> Imported or import related measles cases included in total measles.

\* Member States reporting aggregated measles data in year 2011

Indicators not meeting target and countries not reporting monthly measles data are highlighted in red; NA=Not Applicable; "-" = data not available or can not be calculated due to insufficient denominator.

Monthly Summary Table 3. Classification of reported suspected rubella cases, January—April 2012 (data as of 1 June 2012)

Country	Total Population <sup>1</sup>	Annualized Incidence Rate per 1 million population	Total confirmed Rubella	Classification				Importation <sup>3</sup>	Reporting			Surveillance Indicators <small>(Please click here to refer Annex 8 of MR Surveillance guideline)</small>		
				Lab confirmed	Epi-Link	Clinical <sup>2</sup>	Discarded		Completeness	Timeliness	Month of last report	Laboratory investigation rate	Detection rate	Source of infection
Albania	3 226 922	0.0	0	0	0	0	0	0	100%	100%	Apr	-	0.00	-
Andorra	67 726	0.0	0	0	0	0	0	0	50%	25%	Feb	-	0.00	-
Armenia	3 107 085	1.3	4	0	0	4	10	0	100%	100%	Apr	71.4%	NA	NA
Austria	8 418 180	0.0	0	0	0	0	0	0	100%	100%	Apr	-	0.00	-
Azerbaijan	9 417 527	0.1	1	1	0	0	9	0	100%	100%	Apr	100.0%	0.10	100.0%
Belarus	9 536 760	0.2	2	1	0	1	0	0	100%	100%	Apr	0.0%	0.00	0.0%
Belgium	10 770 406	0.0	0	0	0	0	0	0	25%	25%	Jan	-	0.00	-
Bosnia and Herzegovina	3 747 213	-	-	-	-	-	-	-	-	-	No Report	-	NA	NA
Bulgaria	7 401 269	0.0	0	0	0	0	0	0	100%	100%	Apr	-	0.00	-
Croatia	4 388 603	-	-	-	-	-	-	-	-	-	No Report	-	NA	NA
Cyprus	1 128 260	0.0	0	0	0	0	0	0	100%	75%	Apr	-	0.00	-
Czech Republic	10 547 860	0.2	2	2	0	0	0	0	100%	100%	Apr	100.0%	0.00	0.0%
Denmark	5 589 464	0.0	0	0	0	0	0	0	75%	75%	Apr	-	0.00	-
Estonia	1 339 829	0.0	0	0	0	0	0	0	100%	100%	Apr	-	0.00	-
Finland	5 397 248	0.0	0	0	0	0	0	0	100%	75%	Apr	-	0.00	-
France	63 417 636	0.0	0	0	0	0	0	0	25%	25%	Jan	-	0.00	-
Georgia	4 305 661	7.7	33	2	0	31	0	0	100%	100%	Apr	0.0%	NA	NA
Germany	81 964 400	0.0	0	0	0	0	0	0	25%	25%	Jan	-	0.00	-
Greece	11 418 997	0.0	0	0	0	0	0	0	100%	100%	Apr	-	0.00	-
Hungary	9 947 105	0.4	4	4	0	0	0	0	100%	100%	Apr	100.0%	0.00	100.0%
Iceland	327 804	0.0	0	0	0	0	0	0	25%	25%	Apr	-	0.00	-
Ireland	4 579 823	0.7	3	0	1	2	0	0	100%	100%	Apr	50.0%	0.00	0.0%
Israel	7 672 910	0.0	0	0	0	0	0	0	100%	100%	Apr	-	0.00	-
Italy	60 819 728	0.0	0	0	0	0	0	0	50%	50%	Apr	-	0.00	-
Kazakhstan	16 407 491	0.4	6	3	2	1	0	0	75%	75%	Apr	0.0%	0.00	0.0%
Kyrgyzstan	5 463 941	0.4	2	2	0	0	7	0	25%	25%	Apr	88.9%	0.13	11.1%
Latvia	2 233 986	0.0	0	0	0	0	0	0	100%	100%	Apr	-	0.00	-
Lithuania	3 296 148	0.0	0	0	0	0	0	0	75%	75%	Apr	-	0.00	-
Luxembourg	521 080	1.9	1	1	0	0	0	0	75%	75%	Apr	100.0%	NA	NA
Malta	419 402	0.0	0	0	0	0	0	0	100%	100%	Apr	-	0.00	-
Monaco	38 222	-	-	-	-	-	-	-	-	-	No Report	-	NA	NA
Montenegro	632 737	-	-	-	-	-	-	-	-	-	No Report	-	NA	NA
Netherlands	16 694 725	0.0	0	0	0	0	0	0	50%	50%	Feb	-	0.00	-
Norway	4 951 344	0.0	1	1	0	0	0	1	75%	75%	Apr	100.0%	0.00	100.0%
Poland	38 315 208	30.0	1148	0	0	1148	0	0	75%	75%	Mar	0.0%	NA	NA
Portugal	10 686 443	0.0	0	0	0	0	0	0	100%	100%	Apr	-	0.00	-
Republic of Moldova	3 532 010	-	-	-	-	-	-	-	-	-	No Report	-	NA	NA
Romania	21 397 044	583.1	12476	1674	10802	0	0	0	75%	75%	Mar	88.7%	NA	NA
Russian Federation	142 668 224	3.7	530	500	22	8	0	2	100%	100%	Apr	2.8%	NA	NA
San Marino	29 486	-	-	-	-	-	-	-	-	-	No Report	-	NA	NA
Serbia	9 834 026	-	-	-	-	-	-	-	-	-	No Report	-	NA	NA
Slovakia	5 478 110	0.0	0	0	0	0	0	0	100%	100%	Apr	-	0.00	-
Slovenia	2 039 627	0.0	0	0	0	0	0	0	100%	100%	Apr	-	0.00	-
Spain	46 657 472	0.2	15	14	0	1	0	6	100%	100%	Apr	93.3%	0.00	93.3%
Sweden	9 477 964	0.0	1	1	0	0	0	1	50%	50%	Apr	100.0%	0.00	100.0%
Switzerland	7 723 812	0.0	0	0	0	0	10	1	100%	100%	Apr	90.0%	0.13	20.0%
Tajikistan	7 086 101	0.0	0	0	0	0	0	0	75%	75%	Apr	-	0.00	-
The former Yugoslav Republic of Macedonia	2 066 356	0.5	1	0	0	1	0	0	100%	75%	Apr	0.0%	0.00	0.0%
Turkey	74 546 664	-	-	-	-	-	-	-	-	-	No Report	-	NA	NA
Turkmenistan	5 164 039	0.0	0	0	0	0	0	0	100%	50%	Apr	-	0.00	-
Ukraine	44 991 932	20.9	942	0	0	942	0	0	75%	25%	Apr	0.0%	NA	NA
United Kingdom	62 806 776	0.6	44	44	0	0	0	7	100%	100%	Apr	100.0%	0.00	88.6%
Uzbekistan	28 124 854	0.0	0	0	0	0	0	0	100%	25%	Apr	-	0.00	-
<b>Total/Averages</b>	<b>901 823 640</b>	<b>16.9</b>	<b>15216</b>	<b>2250</b>	<b>10827</b>	<b>2139</b>	<b>36</b>	<b>18</b>	<b>69.8%</b>	<b>64.6%</b>		<b>36.2%</b>	<b>0.00</b>	<b>82.4%</b>

Data source : Monthly aggregated and case-based data reported by Member States to WHO/Europe and ECDC/TESSy

<sup>1</sup> Source : "World Population Prospects: The 2008 Revision", New York, United Nations and updates provided by Member States.

<sup>2</sup> Cases with missing classification are classified as "Clinical".

<sup>3</sup> Imported or import related rubella cases included in total rubella.

Indicators not meeting target and countries not reporting monthly rubella data are highlighted in red. "-" indicates data not available/applicable or can not be calculated due to insufficient denominator.



Monthly Summary Table 4. Measles and rubella laboratory test results, January – March 2012 (data as of 1 June 2012)

Country	Specimen* (Serum, Oral Fluid, Swab, Urine and other)								Reporting		
	Tested for measles	Positive for measles (%)	Measles Equivocal	Negative for measles	Tested for rubella	Positive for rubella (%)	Rubella Equivocal	Negative for rubella	% Completeness	% Timeliness	Month of last report
Albania	4	0 (0.0)	0	4	0	0	0	0	100.0%	75.0%	Apr
Andorra											No Lab
Armenia	16	0 (0.0)	0	16	16	0 (0.0)	0	16	100.0%	100.0%	Apr
Austria	414	7 (2.0)	0	407	1744	4 (0.0)	0	1740	100.0%	100.0%	Apr
Azerbaijan	15	0 (0.0)	0	15	15	1 (7.0)	0	14	25.0%	25.0%	Jan
Belarus	151	15 (10.0)	0	136	140	2 (1.0)	0	138	100.0%	100.0%	Apr
Belgium	82	16 (20.0)	3	63	24	3 (13.0)	4	17	100.0%	100.0%	Apr
Bosnia and Herzegovina											No Report
Bulgaria	30	1 (3.0)	0	29	32	1 (3.0)	0	31	100.0%	75.0%	Apr
Croatia	0	0	0	0	0	0	0	0	100.0%	100.0%	Apr
Cyprus	1	1 (100.0)	0	0	0	0	0	0	100.0%	50.0%	Apr
Czech Republic	27	10 (37.0)	0	17	10	0 (0.0)	0	10	100.0%	100.0%	Apr
Denmark	177	7 (4.0)	5	165	135	7 (5.0)	8	120	75.0%	25.0%	Mar
Estonia	26	2 (8.0)	0	24	167	2 (1.0)	0	165	100.0%	100.0%	Apr
Finland	285	23 (8.0)	0	262	244	2 (1.0)	0	242	100.0%	100.0%	Apr
France	364	111 (30.0)	3	244	0	0	0	0	100.0%	75.0%	Apr
Georgia	44	0 (0.0)	1	43	45	2 (4.0)	4	39	100.0%	50.0%	Apr
Germany	125	18 (14.0)	1	106	19	0 (0.0)	0	19	100.0%	100.0%	Apr
Greece	3	0 (0.0)	0	3	65	12 (18.0)	0	53	100.0%	50.0%	Apr
Hungary	26	3 (12.0)	0	23	163	10 (6.0)	0	152	100.0%	100.0%	Apr
Iceland	23	0 (0.0)	0	23	46	2 (4.0)	0	44	100.0%	50.0%	Apr
Ireland	140	5 (4.0)	7	128	575	1 (0.0)	2	572	100.0%	75.0%	Apr
Israel	92	7 (8.0)	0	85	315	33 (10.0)	0	282	100.0%	100.0%	Apr
Italy											No Report
Kazakhstan	134	43 (32.0)	1	90	156	4 (3.0)	3	149	100.0%	100.0%	Apr
Kyrgyzstan	113	0 (0.0)	0	113	113	3 (3.0)	2	108	100.0%	100.0%	Apr
Latvia	188	15 (8.0)	4	169	180	3 (2.0)	5	172	100.0%	50.0%	Apr
Lithuania	5	2 (40.0)	3	0	4	0 (0.0)	0	4	100.0%	100.0%	Apr
Luxembourg	37	0 (0.0)	0	37	23	0 (0.0)	1	22	100.0%	100.0%	Apr
Malta	9	0 (0.0)	0	9	425	5 (1.0)	0	420	100.0%	75.0%	Apr
Monaco											No Lab
Montenegro											No Lab
Netherlands	23	0 (0.0)	0	23	21	0 (0.0)	0	21	75.0%	25.0%	Mar
Norway	26	3 (12.0)	0	23	12	1 (8.0)	0	11	100.0%	100.0%	Apr
Poland	42	1 (2.0)	2	39	14	1 (7.0)	0	13	75.0%	75.0%	Mar
Portugal	13	3 (23.0)	0	10	0	0	0	0	100.0%	100.0%	Apr
Republic of Moldova	38	11 (29.0)	0	27	38	2 (5.0)	0	36	100.0%	100.0%	Apr
Romania	3383	1689 (50.0)	29	1665	8059	5369 (67.0)	162	2528	100.0%	100.0%	Apr
Russian Federation	4308	1663 (39.0)	2	2643	2752	469 (17.0)	3	2280	100.0%	100.0%	Apr
San Marino											No Lab
Serbia	16	1 (6.0)	0	15	33	0 (0.0)	0	33	100.0%	75.0%	Apr
Slovakia	5	1 (20.0)	0	4	2	0 (0.0)	0	2	100.0%	75.0%	Apr
Slovenia	28	6 (21.0)	1	21	16	0 (0.0)	0	16	100.0%	100.0%	Apr
Spain											No Report
Sweden											No Report
Switzerland	18	15 (83.0)	0	3	8	8 (100.0)	0	0	100.0%	100.0%	Apr
Tajikistan	12	2 (17.0)	0	10	12	0 (0.0)	0	12	75.0%	25.0%	Mar
The former Yugoslav Republic of Macedonia	0	0	0	0	1	0 (0.0)	0	1	25.0%	0.0%	Jan
Turkey	657	4 (1.0)	4	649	657	21 (3.0)	16	620	75.0%	75.0%	Mar
Turkmenistan	8	0 (0.0)	0	8	8	0 (0.0)	0	8	50.0%	50.0%	Feb
Ukraine	534	301 (56.0)	8	225	312	77 (25.0)	1	234	100.0%	100.0%	Apr
United Kingdom	2946	607 (21.0)	0	2339	577	44 (8.0)	0	533	100.0%	100.0%	Apr
Uzbekistan	10	0 (0.0)	0	10	10	0 (0.0)	0	10	100.0%	100.0%	Apr
<b>Total / Average</b>	<b>14598</b>	<b>4593 (31%)</b>	<b>74</b>	<b>9925</b>	<b>17188</b>	<b>6089 (35%)</b>	<b>211</b>	<b>10887</b>	<b>90.8%</b>	<b>77.7%</b>	

\*Specimen based data are not population based, and should not be interpreted as indicators for epidemiological surveillance. Laboratories may have received more than 1 clinical sample or may have conducted more than 1 test for a given case reported in Table 1.

Data source: Aggregated monthly data provided by regional measles and rubella laboratory network.

Table 5: Classification of AFP cases, surveillance performance and weekly reporting to WHO EURO by country, 2011-2012, WHO European Region

Countries	2011 (1-53 weeks)											2012 (1-22 weeks)													
	AFP Cases <sup>1</sup>	AFP cases under 15 year of age	Hot AFP Cases <sup>2</sup>	Classification					Rates			AFP Cases <sup>1</sup>	AFP cases under 15 years of age	Hot AFP Cases <sup>2</sup>	Classification					Rates			Reporting		
				Polio Compatible	Pending	Discarded	Wild Polio cases	VDPV/VAPP	Non polio AFP rate <sup>3</sup>	Adequate Stool collection	Surv. Index <sup>4</sup>				Polio Compatible	Pending	Discarded	Wild Polio cases	VDPV/VAPP	Non polio AFP rate <sup>3</sup>	Adequate Stool collection	Surv. Index <sup>4</sup>	% Completeness <sup>5</sup>	% Timeliness	Week of last report
Albania	4	4	0	0	0	4	0	0	0.56	100.0	0.56	6	6	0	0	4	2	0	0	0.68	100.0	0.68	86.0	72.0	21
Andorra	0	0	0	0	0	0	0	0	0.00	0.0	0.00	0	0	0	0	0	0	0	0	0.00	0.0	0.00	39.0	9.0	9
Armenia	21	21	1	0	0	21	0	0	3.37	90.5	0.90	15	15	1	0	8	7	0	0	2.63	93.3	0.93	91.0	95.0	22
Austria*	2	2	0	0	0	2	0	0	0.16	0.0	0.08	1	1	0	0	1	0	0	0	0.00	0.0	0.00	78.0	45.0	18
Azerbaijan*	37	37	0	0	0	37	0	0	1.88	97.3	1.00	15	15	0	0	5	10	0	0	1.17	93.3	0.93	95.0	100.0	22
Belarus	46	46	3	0	0	46	0	0	3.18	78.3	0.85	21	21	2	0	8	13	0	0	2.11	90.5	0.95	39.0	40.0	21
Belgium	3	3	0	0	0	3	0	0	0.17	0.0	0.00	2	2	0	0	0	2	0	0	0.26	0.0	0.00	78.0	27.0	21
Bosnia and Herzegovina*	8	8	1	0	1	7	0	0	1.26	50.0	0.75	0	0	0	0	0	0	0	0	0.00	0.0	0.00	65.0	31.0	22
Bulgaria	12	12	0	0	0	12	0	0	1.16	91.7	1.00	4	4	0	0	4	0	0	0	0.00	100.0	0.00	91.0	95.0	22
Croatia	0	0	0	0	0	0	0	0	0.00	0.0	0.00	2	2	0	0	2	0	0	0	0.00	0.0	0.00	56.0	22.0	13
Cyprus	4	4	0	0	0	4	0	0	2.05	100.0	1.00	2	2	0	0	0	2	0	0	2.43	100.0	1.00	82.0	86.0	22
Czech Republic	8	8	0	0	0	8	0	0	0.54	75.0	0.47	0	0	0	0	0	0	0	0	0.00	0.0	0.00	82.0	77.0	21
Estonia	0	0	0	0	0	0	0	0	0.00	0.0	0.00	1	1	0	0	0	1	0	0	1.11	0.0	0.00	78.0	81.0	21
Georgia*	10	10	1	0	0	9	0	1	1.26	100.0	1.00	9	9	1	0	5	4	0	0	1.33	100.0	1.00	95.0	100.0	22
Greece*	24	24	2	0	0	24	0	0	1.43	79.2	0.92	11	11	0	0	11	0	0	0	0.00	81.8	0.00	91.0	95.0	21
Hungary	7	7	0	0	0	7	0	0	0.48	28.6	0.21	7	7	0	0	3	4	0	0	0.65	57.1	0.37	82.0	63.0	20
Ireland	7	7	0	0	0	7	0	0	0.72	14.3	0.31	0	0	0	0	0	0	0	0	0.00	0.0	0.00	91.0	36.0	21
Israel	19	18	0	0	0	19	0	0	0.92	16.7	0.41	3	3	0	0	0	3	0	0	0.34	0.0	0.11	82.0	81.0	22
Italy	64	63	1	0	0	64	0	0	0.75	65.1	0.51	28	28	0	0	9	19	0	0	0.52	71.4	0.41	30.0	13.0	15
Kazakhstan	103	103	1	0	0	103	0	0	2.54	97.1	0.98	37	37	0	0	19	18	0	0	1.02	97.3	1.00	86.0	81.0	22
Kyrgyzstan*	68	65	2	0	0	68	0	0	4.19	100.0	1.00	20	20	0	0	11	9	0	0	1.30	100.0	1.00	60.0	63.0	22
Latvia	1	1	0	0	0	1	0	0	0.32	100.0	0.32	2	2	0	0	0	2	0	0	1.49	100.0	1.00	86.0	63.0	22
Lithuania	10	10	0	0	0	10	0	0	2.04	100.0	1.00	0	0	0	0	0	0	0	0	0.00	0.0	0.00	95.0	100.0	22
Malta	0	0	0	0	0	0	0	0	0.00	0.0	0.00	0	0	0	0	0	0	0	0	0.00	0.0	0.00	73.0	9.0	22
Montenegro*	3	3	0	0	0	3	0	0	2.49	66.7	1.00	1	1	0	0	1	0	0	0	0.00	0.0	0.00	82.0	86.0	22
Norway	12	12	0	0	0	12	0	0	1.31	41.7	0.67	3	3	0	0	2	1	0	0	0.26	0.0	0.26	82.0	22.0	20
Poland	36	36	2	0	0	36	0	0	0.64	80.6	0.57	15	14	1	0	6	9	0	0	0.38	42.9	0.19	78.0	63.0	21
Portugal	8	7	1	0	0	8	0	0	0.50	42.9	0.43	2	2	0	0	1	1	0	0	0.15	0.0	0.07	30.0	9.0	22
Republic of Moldova	8	8	0	0	0	8	0	0	1.35	100.0	1.00	2	2	0	0	2	0	0	0	0.00	100.0	0.00	86.0	81.0	21
Romania	18	18	0	0	0	18	0	0	0.55	100.0	0.55	8	8	0	0	3	5	0	0	0.36	100.0	0.36	91.0	86.0	22
Russian Federation*	360	358	33	0	0	360	0	0	1.65	92.7	0.95	174	173	20	0	129	45	0	0	0.48	91.3	0.44	95.0	100.0	22
Serbia	10	10	1	0	0	10	0	0	0.58	90.0	0.58	8	8	0	0	6	2	0	0	0.28	87.5	0.24	86.0	90.0	22
Slovakia	2	2	0	0	0	2	0	0	0.24	100.0	0.24	2	2	0	0	2	0	0	0	0.00	100.0	0.00	78.0	54.0	21
Slovenia	0	0	0	0	0	0	0	0	0.00	0.0	0.00	0	0	0	0	0	0	0	0	0.00	0.0	0.00	95.0	77.0	23
Spain	34	34	0	0	0	34	0	0	0.49	38.2	0.30	11	11	0	0	4	7	0	0	0.23	18.2	0.19	95.0	59.0	22
Switzerland	6	3	0	0	0	6	0	0	0.52	66.7	0.34	1	1	0	0	0	1	0	0	0.20	0.0	0.20	78.0	27.0	22
Tajikistan*	55	52	0	0	0	55	0	0	2.16	96.2	0.96	32	32	0	0	3	29	0	0	2.68	100.0	2.00	65.0	63.0	22
The former Yugoslav Republic of Macedonia	2	2	1	0	0	2	0	0	0.56	100.0	0.56	1	1	0	0	0	1	0	0	0.67	100.0	0.67	82.0	68.0	22
Turkey	197	196	3	0	0	240	0	1	1.02	80.6	0.87	68	65	1	0	23	45	0	0	0.56	80.0	0.49	65.0	68.0	21
Turkmenistan	33	33	0	0	0	33	0	0	2.25	100.0	1.00	10	10	0	0	4	6	0	0	0.96	100.0	0.96	43.0	45.0	20
Ukraine*	127	127	31	0	0	125	0	2	1.92	97.6	1.00	45	43	8	0	19	26	0	0	0.94	95.3	0.92	86.0	90.0	22
Uzbekistan*	200	197	4	0	0	200	0	0	2.49	96.4	0.96	78	75	0	0	56	22	0	0	0.65	97.3	0.64	78.0	81.0	22
<b>Average/Total</b>	<b>1569</b>	<b>1551</b>	<b>88</b>	<b>0</b>	<b>1</b>	<b>1608</b>	<b>0</b>	<b>4</b>	<b>1.20</b>	<b>87.00</b>	<b>0.91</b>	<b>647</b>	<b>637</b>	<b>34</b>	<b>0</b>	<b>351</b>	<b>296</b>	<b>0</b>	<b>0</b>	<b>1.02</b>	<b>87.00</b>	<b>0.92</b>	<b>76.0</b>	<b>57.0</b>	

<sup>1</sup> AFP case of all ages (Denmark, Finland, France, Iceland, Luxembourg, Monaco, Netherlands, San Marino, Sweden and United Kingdom do not report AFP cases. High quality surveillance (e.g. enterovirus and/or environmental) to detect poliovirus exists in Member States with no AFP surveillance.

<sup>2</sup> Hot cases = AFP case reported with a priority code (e.g. less than three doses of polio vaccine/Clinically polio/Recent travel to endemic country/high risk group).

<sup>3</sup> Non-polio AFP cases per 100 000 children under the age of 15 years (annualized for current year). Number of non-polio (discarded) AFP cases X 100000 / total population under 15 years.

<sup>4</sup> Two stool specimens collected 24-48 hours apart within 14 days of the onset of paralysis

<sup>5</sup> Surveillance Index = non-polio AFP rate up to 1.0 x (% AFP cases with at least 1 adequate specimens within 14 days of onset).

\*Countries with a high risk for polio spread after importation, following the 25th RCC risk assessment, August 2011. Nonpolio AFP Rate and Surveillance Index targets for these member states have been revised to 2.0 and 1.6 respectively.