

Best viewed using Chrome, Safari or Internet Explorer 9 or higher. If you are having trouble viewing this page please click here for the alternative viewer.

Key points

Week 23/2020 (1 - 7 Jun 2020)

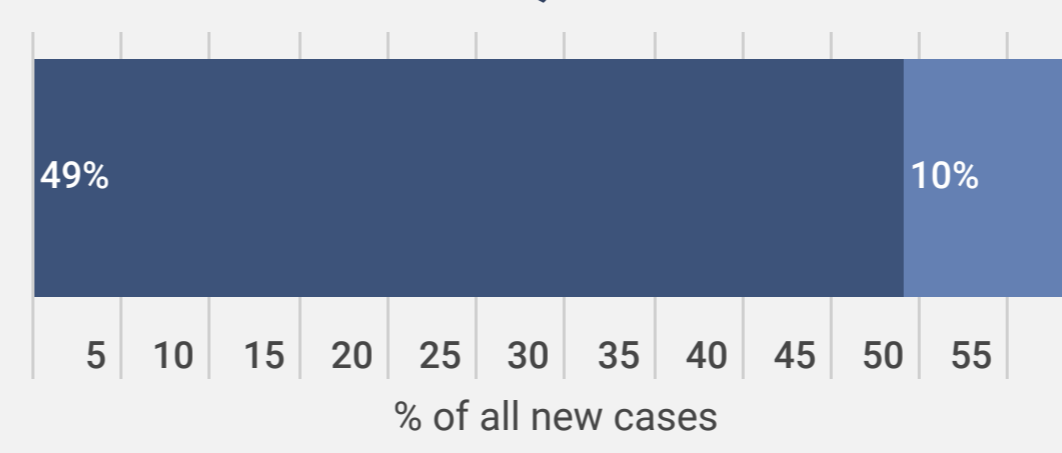
- The number of cases reported in week 23/2020 in the Region has declined by 51% since week 14/2020
- 58% of the cases reported in week 23/2020 were from the Russian Federation and the United Kingdom
- Six countries had a crude incidence of ≥ 35 per 100,000 in week 23/2020: Armenia, Andorra, Sweden, Belarus, the Russian Federation, and North Macedonia.
- In 15 countries, the 14-day cumulative incidence increased by $\geq 10\%$ in week 23/2020 compared to the previous week, however for some countries data was retro-adjusted by national authorities. In order of percentage increase: Andorra, Israel, North Macedonia, Albania, Slovenia, Azerbaijan, Armenia, Kyrgyzstan, France, Sweden, Uzbekistan, Kazakhstan, Portugal, Estonia and the Republic of Moldova (see [EURO COVID-19 Dashboard](#) for recent trends)
- 56% of the deaths reported in week 23/2020 were from the United Kingdom, Russian Federation and Italy
- The proportion of reported cases that died increased from 3.2% in week 22/2020 to 4.4% in week 23/2020, a change that is likely due to a range of factors

Summary overview

- Seven countries in the Region each reported a cumulative incidence of ≥ 500 cases per 100,000 population: San Marino, Andorra, Luxembourg, Iceland, Spain, Ireland and Belgium
- 22% of all reported infections with information available were in a health care worker
- 79% of all ICU admissions were in persons aged 50-79 years of age, with 70% of all ICU admissions in men
- 72% of cumulative deaths were reported from the United Kingdom, Italy, France and Spain
- 94% of all deaths were in persons aged ≥ 60 years and 57% of all deaths were in men
- 95% of all deaths with information available had at least one underlying condition, with cardiovascular disease the leading comorbidity (65%)
- For the [EuroMOMO](#) network as a whole, from week 10, 2020 and as of week 23, over 168,500 excess deaths have been estimated in total, including approximately 154,000 deaths in the age group ≥ 65 years, 12,500 deaths in the age group 45-64 years and 1,500 deaths age group 15-44 years. This time period includes part of the influenza season as well as the COVID-19 pandemic.
- In week 23/2020, five countries reported a total of 113 tests and 10 COVID-19 detections in persons with influenza-like illness in primary care sentinel surveillance. The updated positivity rate in week 22/2020 was 5.2% (7 countries) compared to 5.8% (7 countries) in week 21/2020. The highest positivity was 19.1%, seen in week 15/2020
- As of 28 May 2020, five countries in the European region had an effective reproductive number significantly over 1: Andorra, Azerbaijan, France, Israel and North Macedonia (See [EpiForecasts](#) and the [CMMID COVID working group COVID-19 Global Summary](#) for latest estimates).

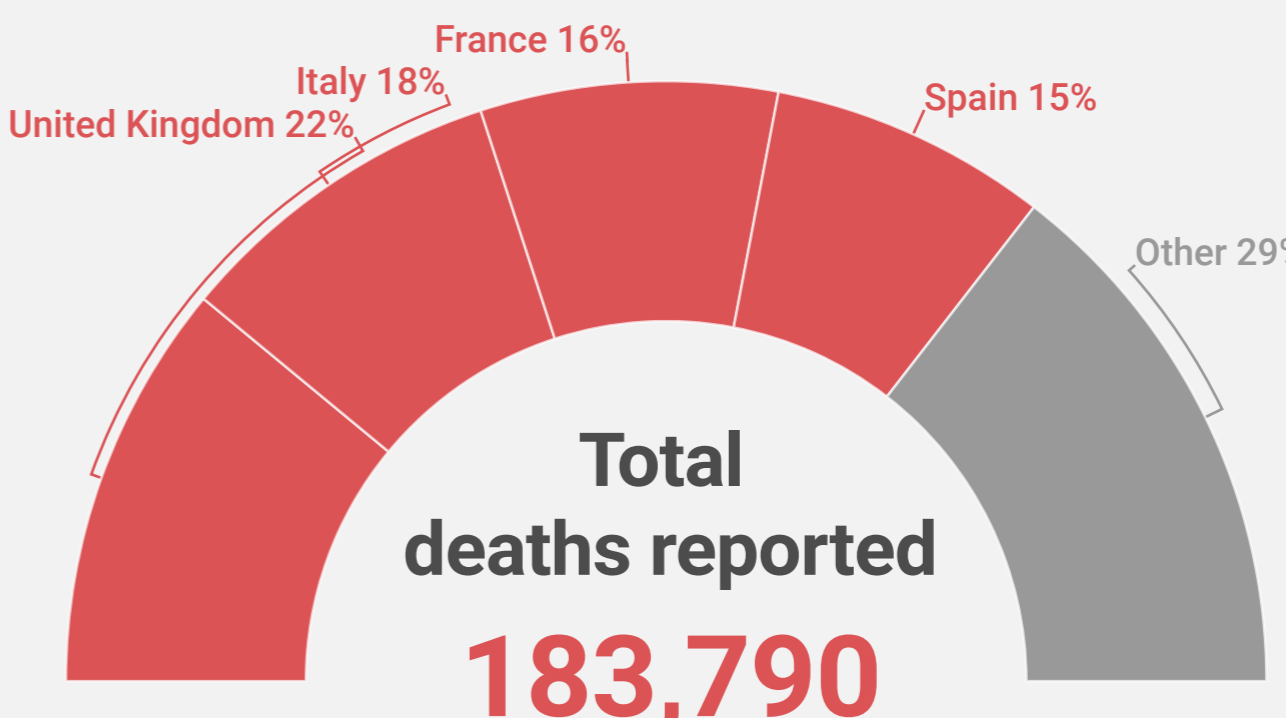
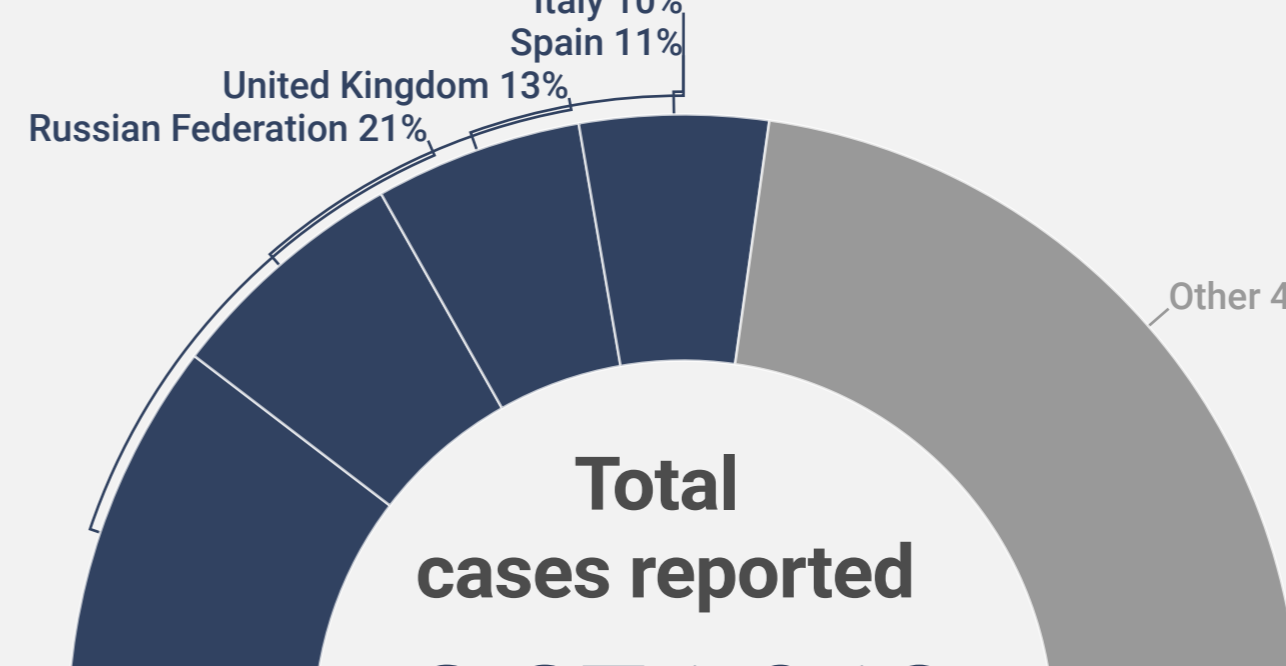
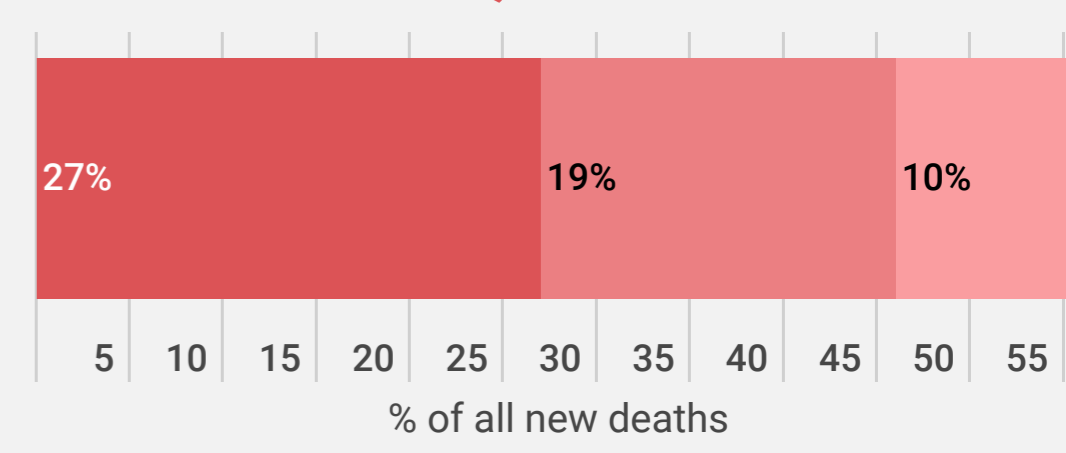
New cases Epi week 23

125,658



New deaths Epi week 23

5,571



22%
of all people infected were health care workers

95%
of all deaths had at least 1 underlying condition

57%
of all deaths were in men

79%
of all ICU admissions were people aged 50-79 years

94%
of all deaths were in persons aged 60+

65%
of all deaths had cardiovascular disease

For more detailed information see: [WHO Global situation reports](#) [WHO Global situation dashboard](#)

Figure 1: Number of COVID-19 cases (N=2,271,910) and deaths (N=183,790) by reporting week

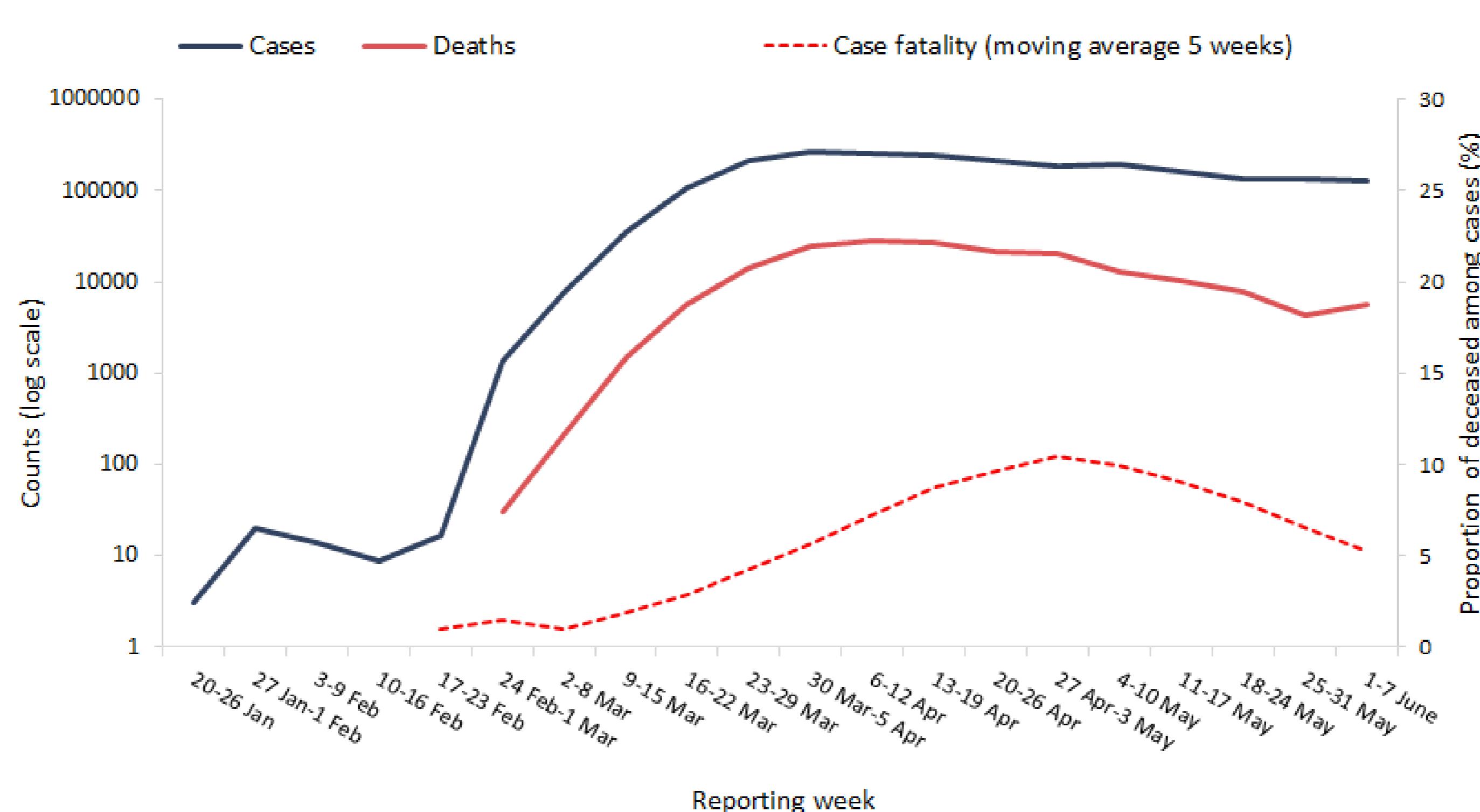


Figure 2A. COVID-19 incidence per 100,000 population and number of deaths by country for week 23

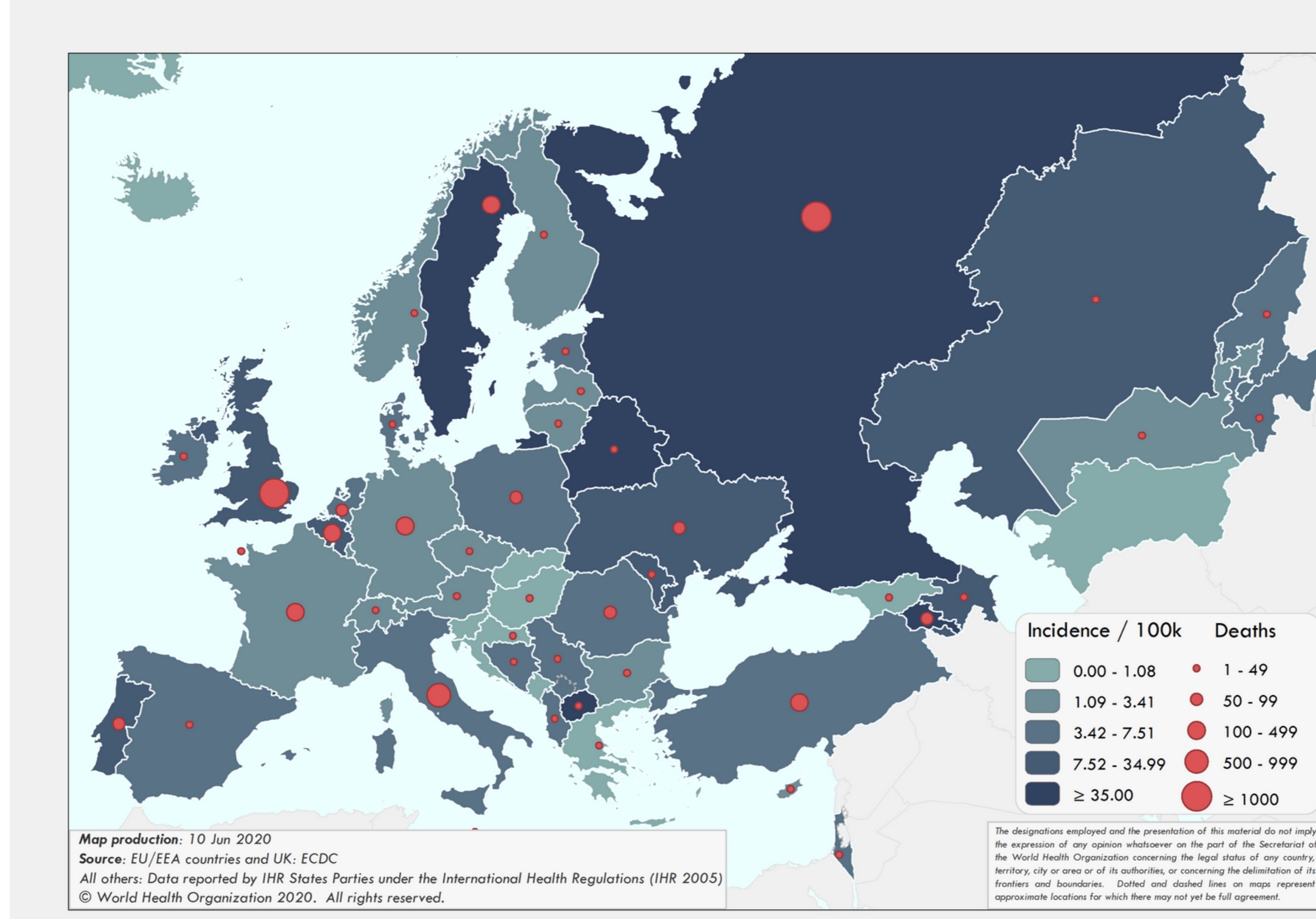


Figure 2B. COVID-19 cumulative incidence per 100,000 population and number of deaths by country

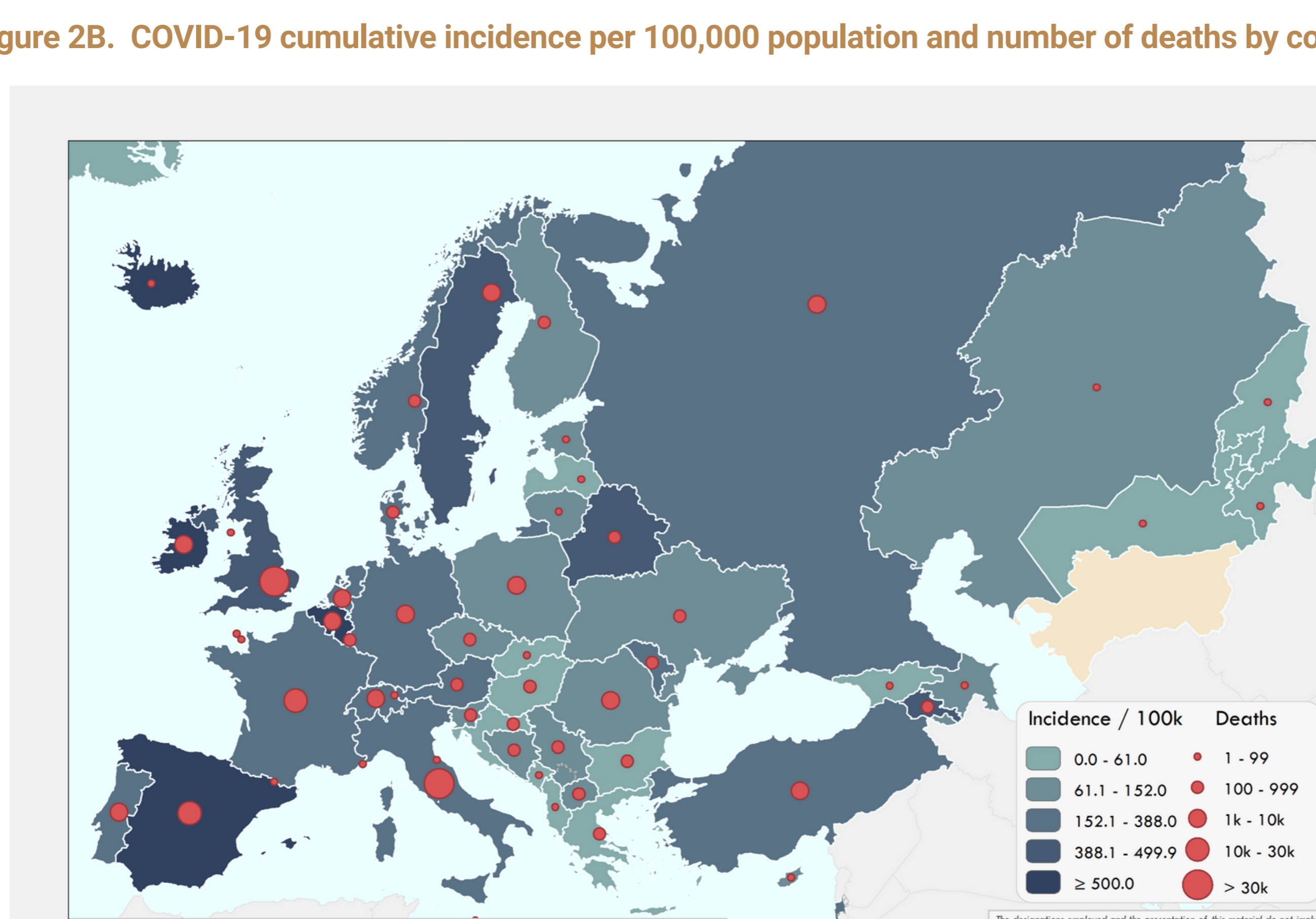


Figure 3. Percentage of COVID-19 cases (N=795,533) and deaths (N=116,514) by age group

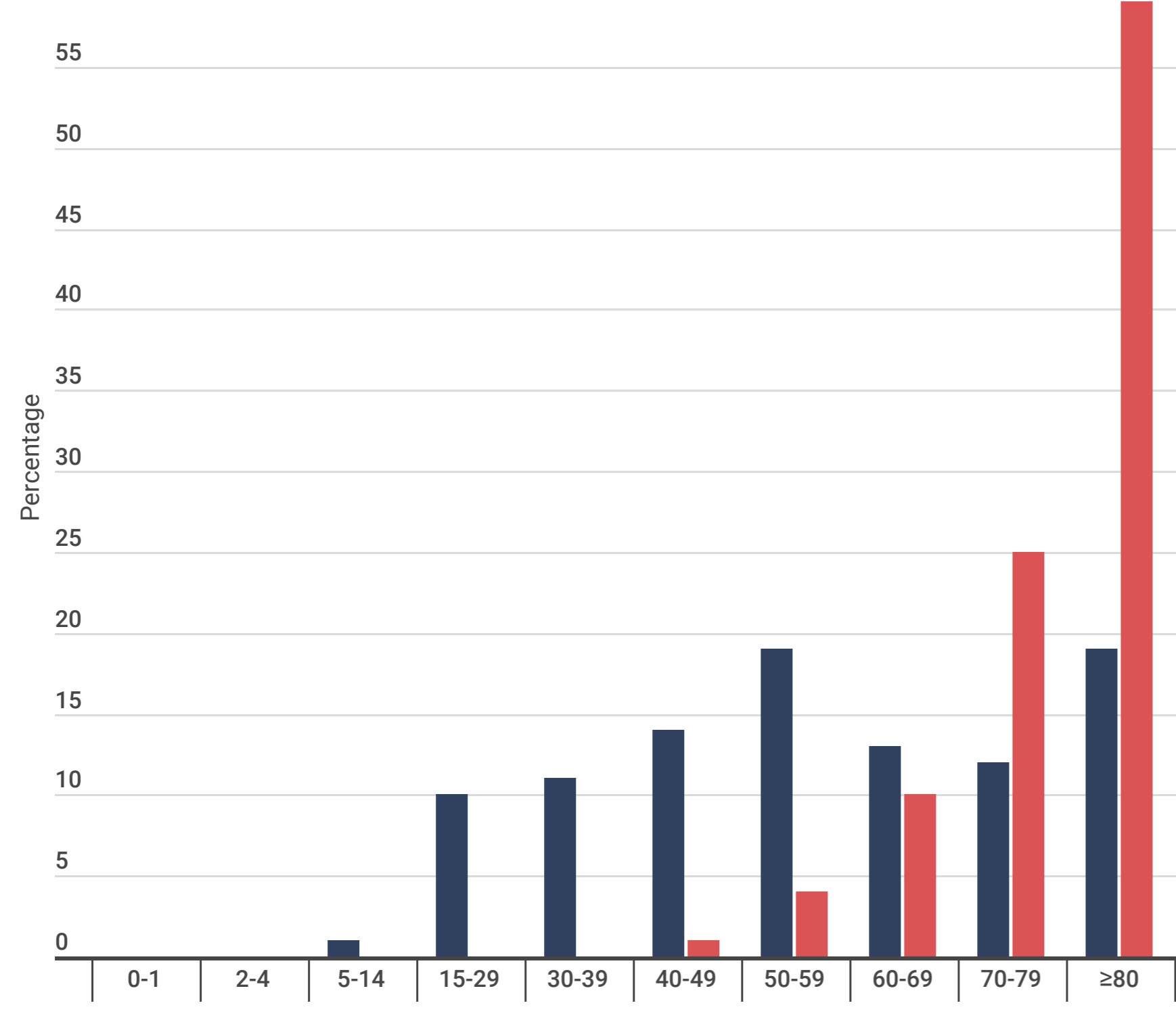


Table 1. Characteristics of COVID-19 cases and deaths

Characteristics	n	%	Total records with data available
Cases			
Age in years, median (range)*	55 (1-105)		547,942
Sex, male*	253,631	46	545,898
Travelled*	17,614	12	145,546
Recovered*	204,900	91	225,860
Health care workers*	95,361	22	438,629
Hospitalization*	134,567	27	506,214
Intensive care unit admissions*	10,131	3	388,799
Deaths			
Age in years, median (range)*	82 (0-108)		116,514
Sex, male*	66,682	59	116,396
At least one underlying condition*	56,570	95	59,656
cardiovascular disease	18,230	65	27,842
diabetes	8,868	33	26,528
lung disease	6,118	23	26,864
neurological disease / dementia	2,344	26	9,191
renal disease	1,673	20	8,427
malignancy	969	26	3,767
obesity	680	9	7,349
liver disease	417	5	8,373
immune disease	258	3	8,014
other	12,675	51	24,924

*Case report forms (n=550,413);
*Case report forms and aggregated data from Italy (3/4 June) and Spain (28 May 2020) (n=640,354);
Health care workers refer to occupation and not to the place of exposure
*Case report forms, mortality survey, aggregated data from Italy (4 June 2020) and Spain (28 May 2020) (n=116,514)

Figure 4. Percentage of COVID-19 cases (N=791,237), hospitalizations (N=140,630), ICU admissions (N=12,725) and deaths (N=116,378) by age group and sex

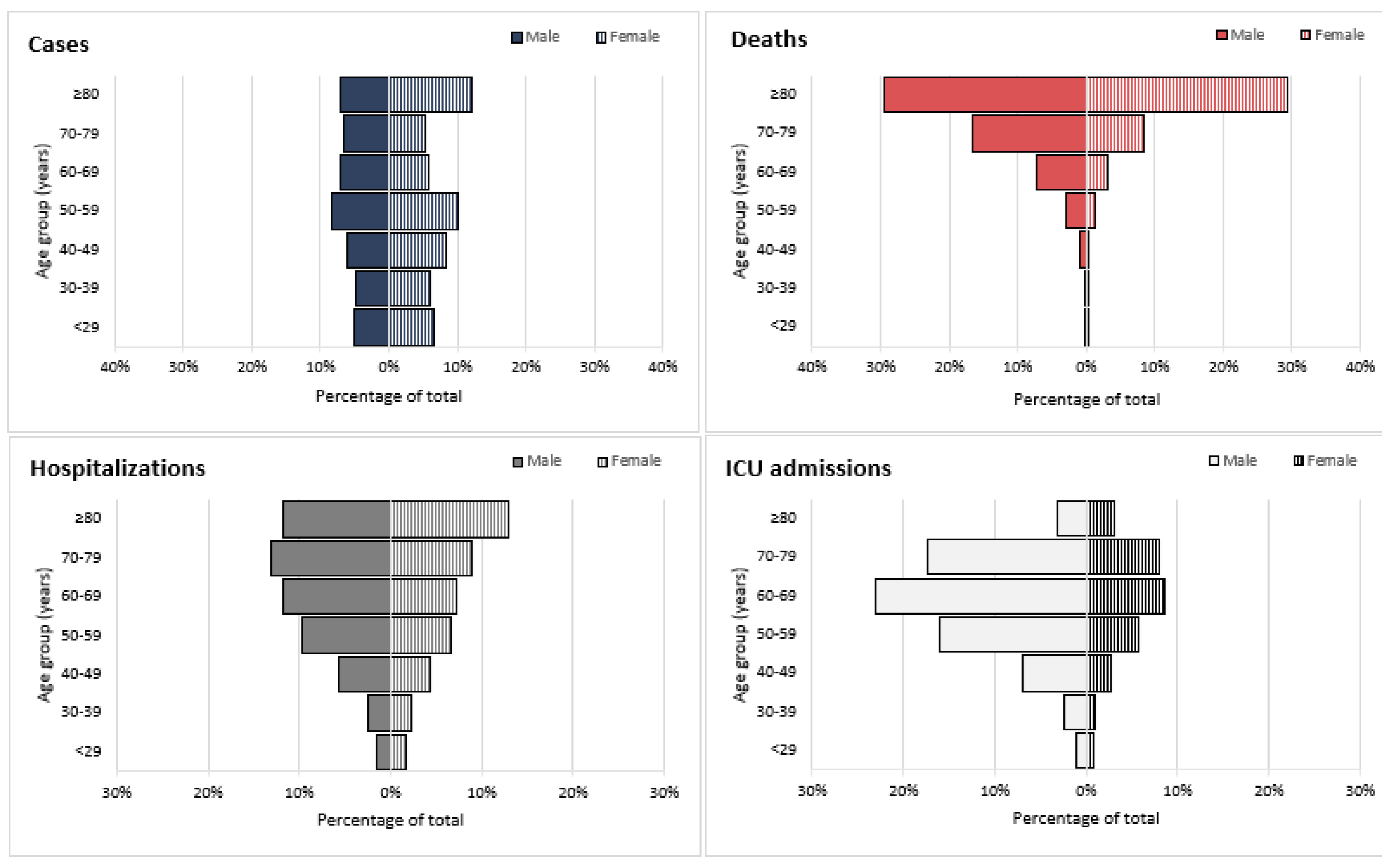


Figure 5. Percentage positive for COVID-19 in the ILI/ARI sentinel surveillance by reporting week

