

Best viewed using Chrome, Safari or Internet Explorer 9 or higher. If you are having trouble viewing this page please click here for the alternative viewer.

## Key points

### Week 33/2020 (10 - 16 Aug 2020)

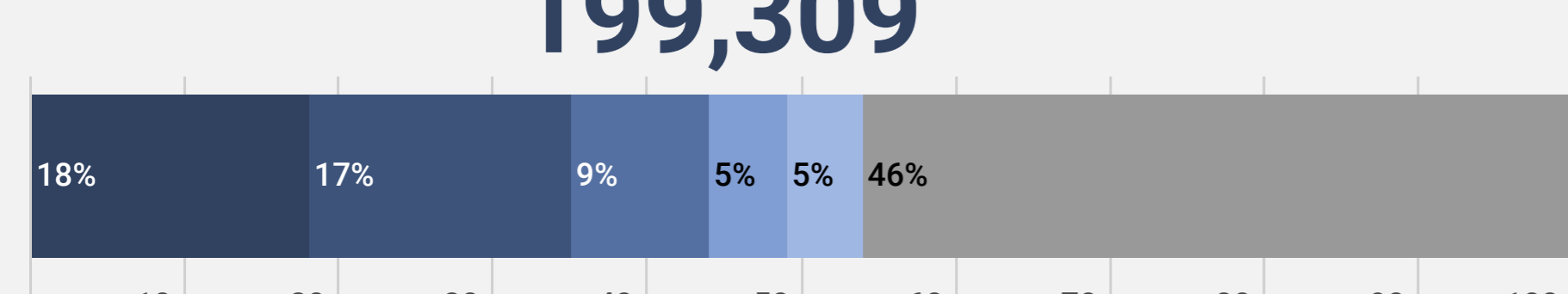
- The number of cases reported in the Region in week 33/2020 increased 9% compared to the previous week, and increased 63% compared with week 23/2020 when the lowest number of cases / week were reported. The number of deaths in the Region in week 33/2020 remained stable compared to the previous week (Figure 1)
- 54% (107,629) of the cases reported in week 33/2020 were reported from five countries: the Russian Federation (18%; 35,317), Spain (17%; 34,421), France (9%; 17,600), Ukraine (5%, 10,407) and Israel (5%, 9,884). The remaining cases (46%; 91,680) were reported by 51 countries and territories; each accounted for <5% of the total cases reported in week 33/2020
- Five countries had a crude incidence of  $\geq 60$  per 100,000 in week 33/2020: Israel, Spain, Malta, Montenegro and Republic of Moldova. The crude incidence continues to vary across the region with a range from 1.4 per 100,000 population in Latvia to 116 per 100,000 population in Israel (Figure 2A)
- The 14-day cumulative incidence increased by  $\geq 10\%$  in week 33/2020 in 36 countries and territories in the Region, however for some countries data was retro-adjusted by national authorities: Albania, Andorra, Austria, Belgium, Croatia, Cyprus, Czech Republic, Denmark, Estonia, Finland, France, Germany, Gibraltar, Greece, Hungary, Iceland, Ireland, Italy, Latvia, Lichtenstein, Lithuania, Malta, Monaco, Netherlands, Norway, Poland, Republic of Moldova, Romania, Slovakia, Spain, Sweden, Switzerland, Turkey, Ukraine, the United Kingdom and Uzbekistan (see [EURO COVID-19 Dashboard](#) for recent trends)
- 57% (1,611) of the deaths reported in week 33/2020 were reported by the Russian Federation (27%; 754), Romania (10%, 295), Kazakhstan (7%; 200), Italy (7%, 189) and Ukraine (6%, 173). The remaining deaths (43%; 1,215) were reported from 38 countries and territories; each accounted for <5% of the total deaths reported in week 33/2020
- The proportion of reported cases that died was 1.4% in week 33/2020
- Community-transmission was reported by 26 countries and territories, 27 countries and territories reported cluster transmission, while 5 countries and territories reported sporadic transmission in week 33/2020 (see [EURO COVID-19 Dashboard](#))
- Since the emergence of COVID-19 virus in Europe at the end of February 2020, a wide range of public health and social measures (PHSM) have been implemented. See [EURO COVID-19 Dashboard \(NPI Explorer\)](#) for a snapshot of the temporal relationship between case and death numbers and the introduction and easing of these measures in some countries in the Region. In response to an increase in cases, some countries have recently started reintroducing PHSM.

## Summary overview

- The cumulative cases across the Region increased 5.6% to 3,787,390 cases in week 33/2020 (from 3,588,081 cases in week 32/2020) and cumulative deaths increased by 1.3% to 214,050 deaths (from 211,224 deaths in week 32/2020). Note the decrease in the total number of deaths due to retrospective reclassification of the COVID-19 deaths in two countries.
- As of 11 July 2020, nine countries in the European region had an effective reproductive number significantly over 1: Bosnia and Herzegovina, Czech Republic, France, Israel, Kazakhstan, Kyrgyzstan, Luxembourg, Serbia and Switzerland (See [EpiForecasts](#) and the [CMIMD COVID working group COVID-19 Global Summary](#) for latest estimates)
- Nine countries in the Region each reported a cumulative incidence of  $\geq 700$  cases per 100,000 population: Andorra, Armenia, Belarus, Israel, Luxembourg, Republic of Moldova, San Marino, Spain and Sweden (Figure 2B)
- As of week 33/2020, 67% (2,536,162) of cumulative cases were reported from the Russian Federation (24%; 922,853), Spain (9%, 355,336), the United Kingdom (8%; 317,444), Italy (7%; 253,438), Turkey (7%; 249,117), Germany (6%; 223,453) and France (6%; 215,521). The remaining cases (33%; 1,251,228) were reported by 53 countries and territories; each accounted for <5% of the total cases reported until week 33/2020
- As of week 33/2020, 75% of cumulative deaths (161,437) were reported from the United Kingdom (19%; 41,361), Italy (17%; 35,392), France (14%; 30,409), Spain (13%; 28,647), the Russian Federation (7%; 15,685) and Belgium (5%; 9943). The remaining deaths (25%; 52,613) were reported by 50 countries and territories; each accounted for <5% of the total cases reported until week 33/2020
- 88% of all deaths with information available were in persons aged  $\geq 65$  years and 58% of all deaths were in men (Table 1)
- 95% of all deaths with information available had at least one underlying condition, with cardiovascular disease the leading comorbidity (75%) (Table 1)
- 13.5% of cases were in persons aged  $\geq 65$  years in week 33/2020, a decrease from 38% in week 14/2020, while the percentage of fatal cases aged  $\geq 65$  years was 67% in week 33/2020 (compared to 91% in week 14/2020) (Figure 3)
- Pooled estimates of all-cause mortality for 24 countries in the [EuroMOMO](#) network show normal levels in week 33/2020. In some countries in Southern Europe, a small excess mortality might be related to local heat waves
- In week 33/2020, five countries reported 107 tests and no SARS-CoV-2 detections in persons with influenza-like illness (ILI) in primary care sentinel surveillance. The updated positivity percentage in this surveillance system in week 32/2020 was 2.1% (6 countries) and 2.2% (7 countries) in week 31/2020. The highest positivity in the ILI sentinel surveillance was 14.6%, seen in week 15/2020 (Figure 4)
- Overall, there were 43,868 (3.3%) COVID-19 cases among the total of 1,281,146 tests performed in 20 countries for week 33/2020 (Figure 5).

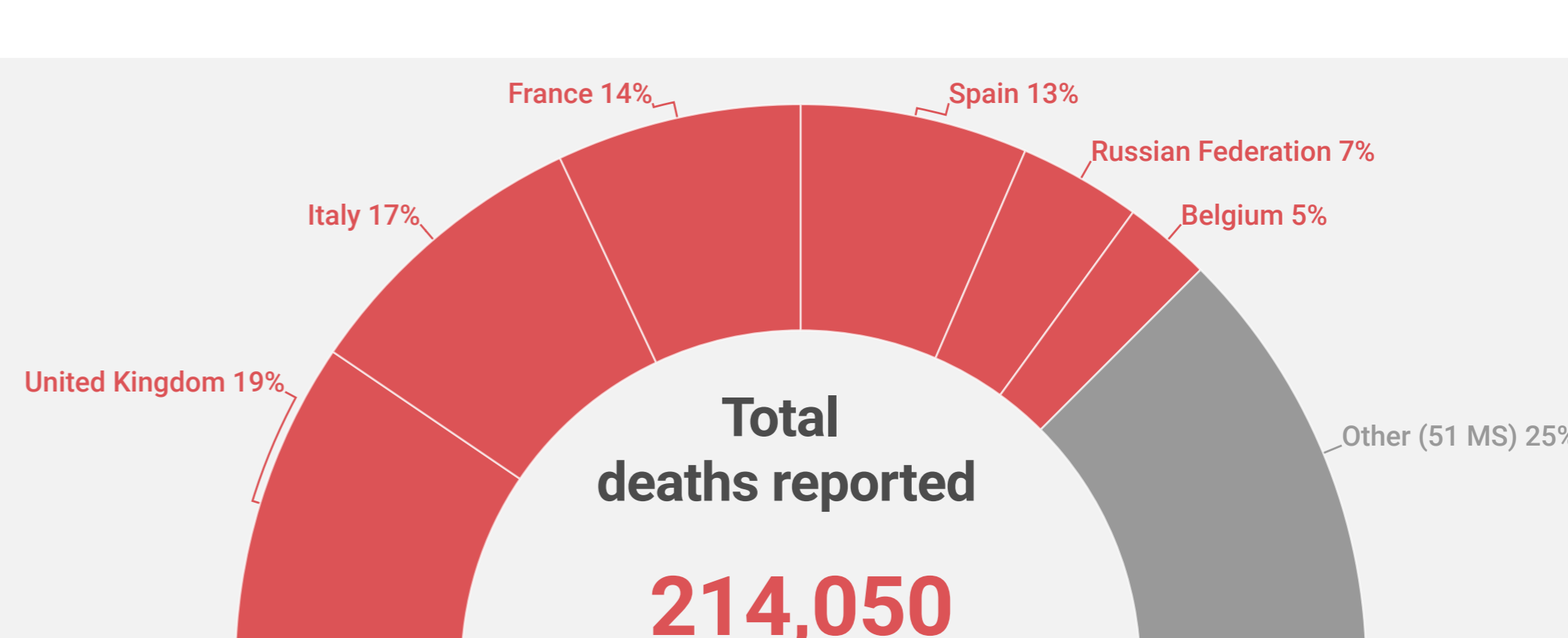
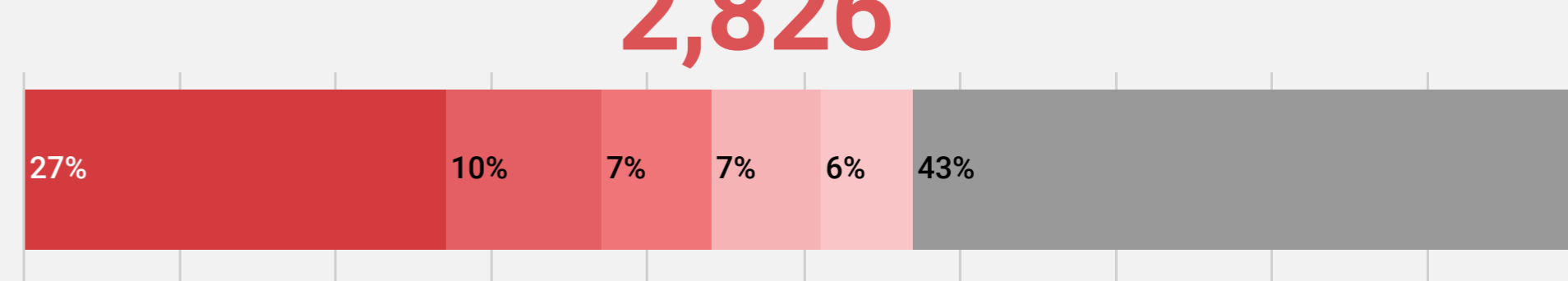
### New cases (week 33/2020)

199,309



### New deaths (week 33/2020)

2,826



88% of deaths were in persons aged  $\geq 65$

58% of deaths were in men

95% of deaths had at least 1 underlying condition

75% of deaths had cardiovascular disease

For more detailed information see: [WHO Global situation reports](#) [WHO Global situation dashboard](#)

Figure 1: Number of COVID-19 cases (N=3,787,390) and deaths (N=214,050) by reporting week

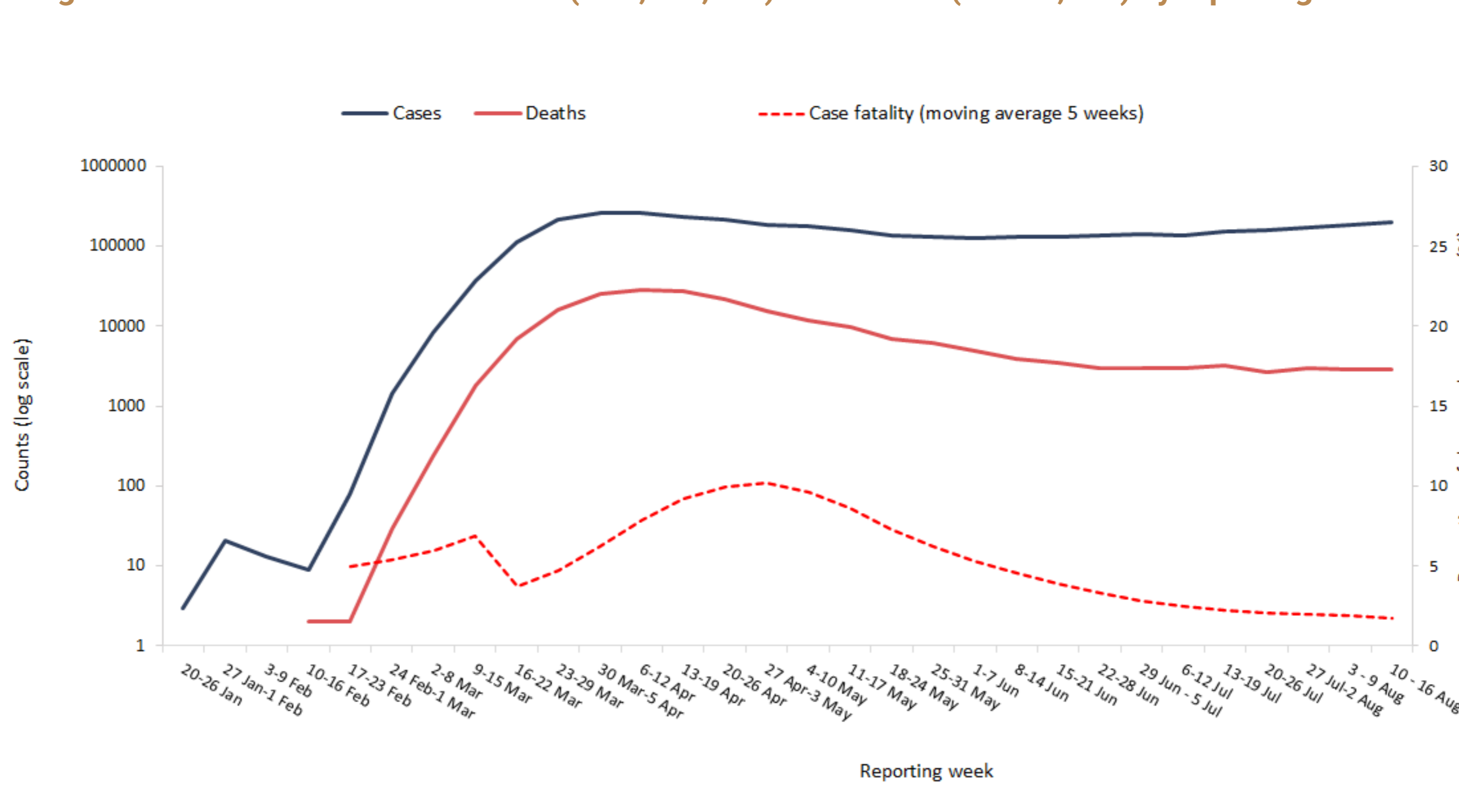


Figure 2A. COVID-19 incidence per 100,000 population and number of deaths by country for week 33

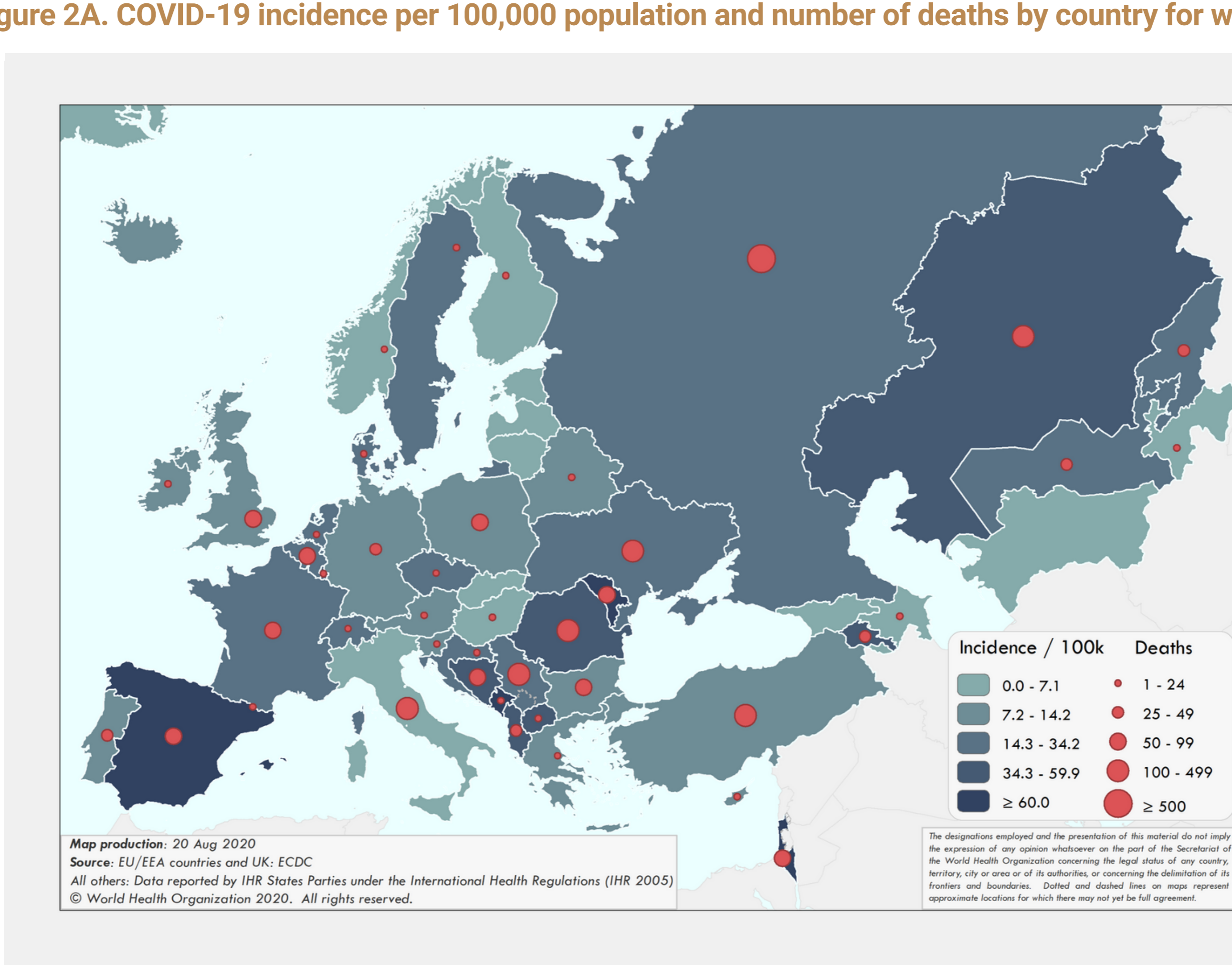


Figure 2B. COVID-19 cumulative incidence per 100,000 population and number of deaths by country

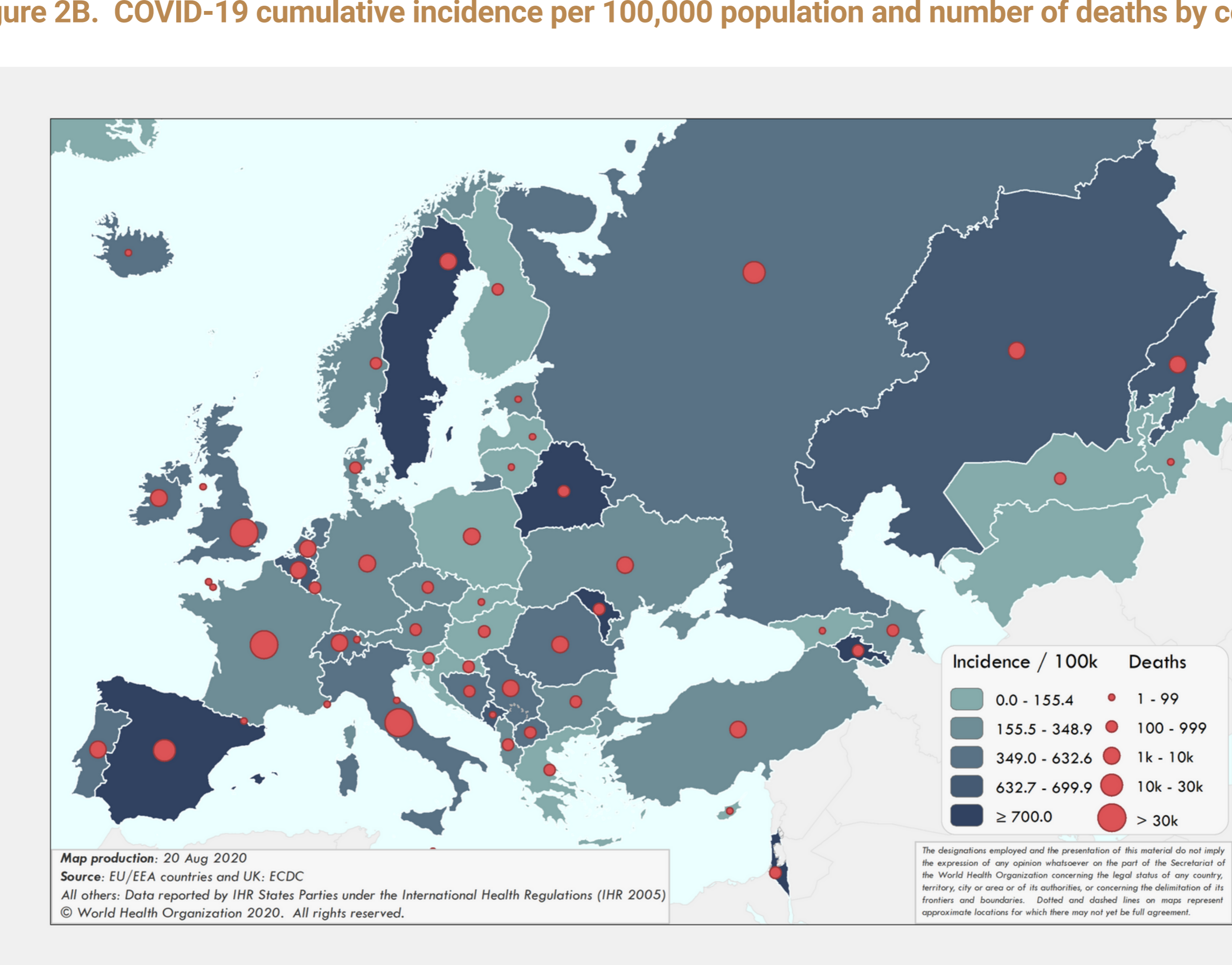


Table 1. Characteristics of COVID-19 deaths

Characteristics	n	%	Total records with data available
Age in years, median (range)	81 (0-108)		97,170
Sex, male	55,986	58	97,039
At least one underlying condition	41,037	95	43,246
• cardiovascular disease	7,750	75	10,266
• diabetes	1,967	40	4,921
• lung disease	1,729	28	6,274
• neurological disease / dementia	2,096	25	8,465
• renal disease	849	24	3,568
• obesity	446	11	4,182
• liver disease	436	6	7,706
• immune disease	70	2	4,189
• other	1,085	22	5,030

Source: Mortality database (n=97,181)

Figure 3. COVID-19 cases (N=1,108,064) and deaths (N=43,601) by age group and reporting week

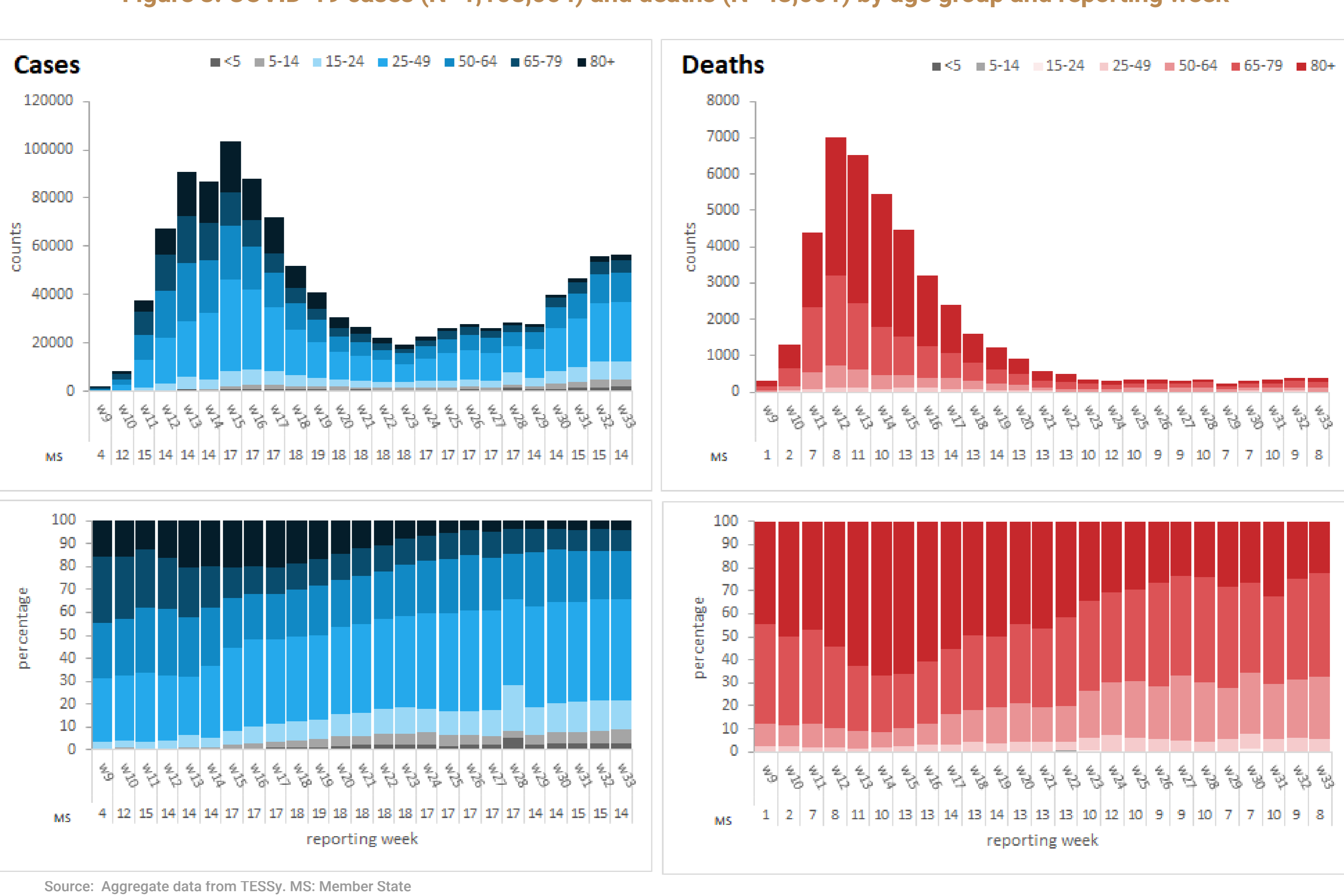


Figure 4. Percentage positive for COVID-19 in the ILI/ARI sentinel surveillance by reporting week

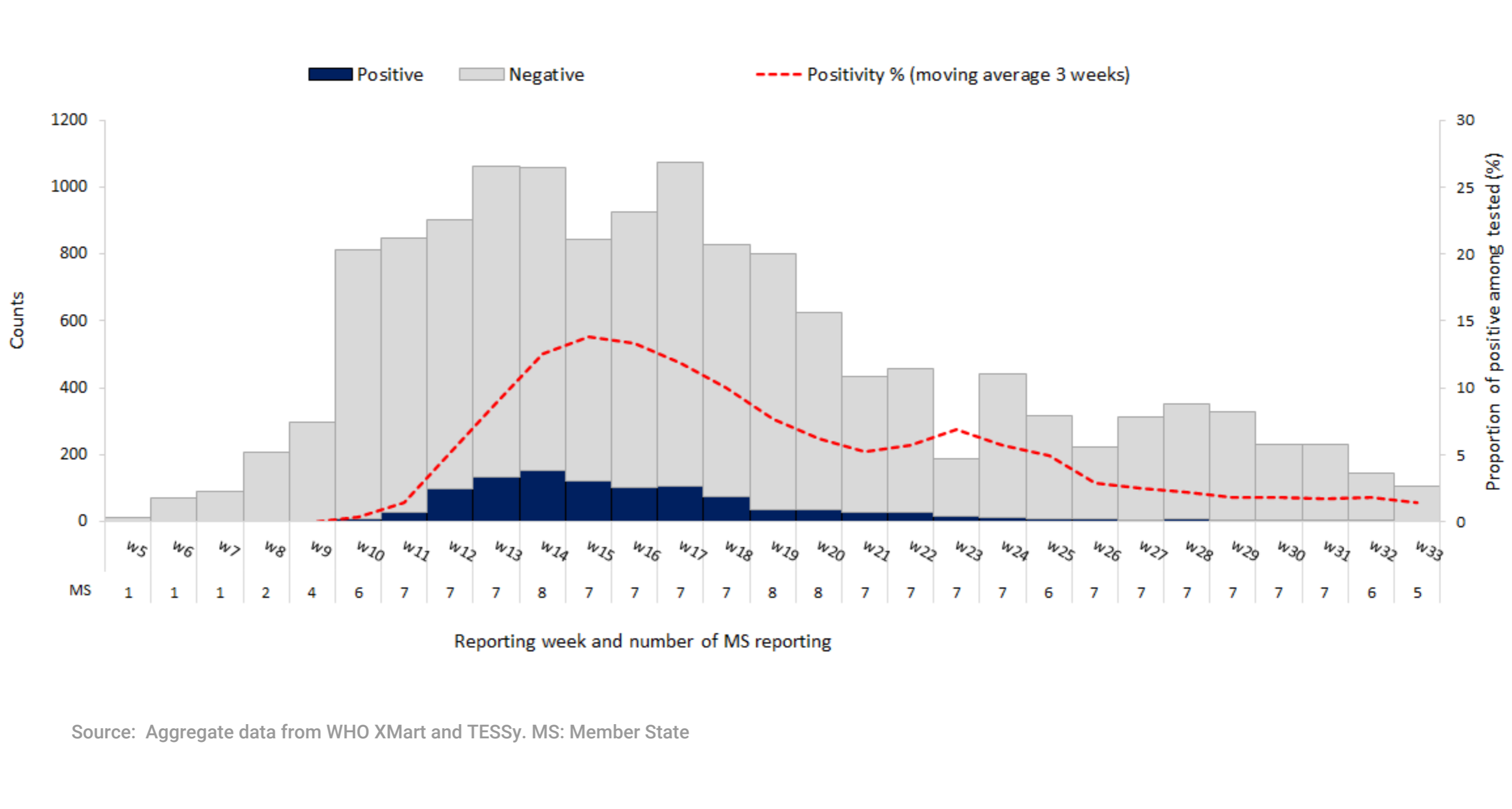


Figure 5. Percentage positive for COVID-19 among all tested by reporting week

