



Population: 60 550 850  
 Income group: High  
 Gross national income per capita: US\$ 35 530

INSTITUTIONAL FRAMEWORK	
<b>Lead agency</b>	Ministry of Transport
Funded in national budget	Yes
<b>National road safety strategy</b>	Yes
Funding to implement strategy	Partially funded
Fatality reduction targets set	Yes (2001–2010)
Fatality reduction target	50%

SAFER ROADS AND MOBILITY	
<b>Formal audits required for new road construction</b>	Yes
<b>Regular inspections of existing road infrastructure</b>	Yes
<b>Policies to promote walking or cycling</b>	Subnational
<b>Policies to encourage investment in public transport</b>	Subnational
<b>Policies to separate road users to protect VRUs</b>	Subnational

SAFER VEHICLES	
<b>Total registered vehicles (2009)</b>	52 586 499
Cars and 4-wheeled light vehicles	40 169 966
Motorized 2- and 3-wheelers	10 074 121
Heavy trucks	944 534
Buses	98 724
Other	1 299 154
<b>Vehicle standards applied</b>	
UN World forum on harmonization of vehicles standards	No
New car assessment programme	Yes
<b>Vehicle regulations</b>	
Front and rear seat-belts required in all new cars	Yes
Front and rear seat-belts required all imported cars	Yes

DATA	
<b>Reported road traffic fatalities (2009)</b>	4 237 <sup>a</sup> , 78%M, 22%F
<b>Estimated GDP lost due to road traffic crashes</b>	2% <sup>b</sup>

<sup>a</sup> Police records. Defined as died within 30 days of crash.  
<sup>b</sup> 2008, Automobile Club of Italy (ACI) and National Statistics Institute (ISTAT).

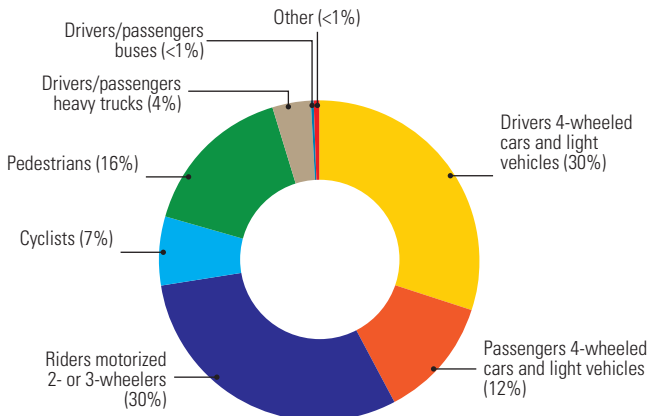
SAFER ROAD USERS	
<b>Penalty/demerit point system in place</b>	Yes
<b>National speed limits</b>	Yes
Local authorities can set lower limits	Yes
Maximum limit urban roads	50 km/h
Enforcement	0 1 2 3 4 5 6 7 8 9 10
<b>National drink-driving law</b>	Yes
BAC limit – general population	0.05 g/dl
BAC limit – young or novice drivers	0 g/dl
BAC limit – professional/commercial drivers	0 g/dl
Random breath testing and/or police checkpoints	Yes
Enforcement	0 1 2 3 4 5 6 7 8 9 10
% road traffic deaths involving alcohol	—
<b>National motorcycle helmet law</b>	Yes
Applies to drivers and passengers	Yes
Helmet standard mandated	Yes
Enforcement	0 1 2 3 4 5 6 7 8 9 10
Helmet wearing rate	92% All riders <sup>c</sup>
<b>National seat-belt law</b>	Yes
Applies to front and rear seat occupants	Yes
Enforcement	0 1 2 3 4 5 6 7 8 9 10
Seat-belt wearing rate	63% Drivers <sup>c</sup> 10% Rear seats <sup>c</sup>
<b>National child restraint law</b>	Yes
Enforcement	0 1 2 3 4 5 6 7 8 9 10
<b>National law on mobile phones while driving</b>	Yes
Law prohibits hand-held mobile phone use	Yes
Law also applies to hands-free mobile phones	No

<sup>c</sup> 2011, ULISSE (Health National Institute and Ministry of Transport).

POST-CRASH CARE	
<b>Vital registration system</b>	Yes
<b>Emergency Room based injury surveillance system</b>	No
<b>Emergency access telephone number(s)</b>	118
<b>Seriously injured transported by ambulance</b>	50–74%
<b>Permanently disabled due to road traffic crash</b>	1.8% <sup>d</sup>
<b>Emergency medicine training for doctors</b>	Yes
<b>Emergency medicine training for nurses</b>	Yes

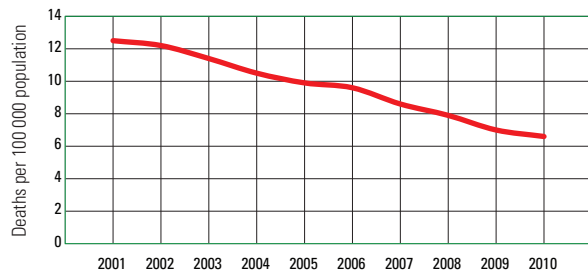
<sup>d</sup> 2010, INTEGRIS database.

DEATHS BY ROAD USER CATEGORY



Source: 2009, ISTAT Survey on road accidents resulting in deaths or injuries.

TRENDS IN ROAD TRAFFIC DEATHS



Source: 2010, ISTAT Survey on road accidents resulting in deaths or injuries.