

Best viewed using Chrome, Safari or Internet Explorer 9 or higher. If you are having trouble viewing this page please click here for the alternative viewer.

Key points

Week 22/2020 (25 - 31 May 2020)

- The number of cases reported in week 22/2020 in the Region has declined by 48% since week 14/2020
- 57% of the cases reported in week 22/2020 were from the Russian Federation and the United Kingdom
- Two countries had a crude incidence of ≥ 50 per 100,000 in week 22/2020: Armenia and Belarus
- In 11 countries, the 14-day cumulative incidence increased by $\geq 10\%$ in week 22/2020 compared to the previous week. In order of percentage increase: Armenia, Kazakhstan, Tajikistan, Kyrgyzstan, Azerbaijan, North Macedonia, Estonia, Uzbekistan, Albania, Republic of Moldova and the Czech Republic. (see [EURO COVID-19 Dashboard](#) for recent trends)
- 56% of the deaths reported in week 22/2020 were from the United Kingdom, Russian Federation and Italy
- The proportion of reported cases that died decreased from 5.8% in week 21/2020 to 4.6% in week 22/2020, a change that is likely due to a range of factors

Summary overview

- Nine countries in the Region each reported a cumulative incidence of ≥ 400 cases per 100,000 population: San Marino, Andorra, Luxembourg, Iceland, Spain, Ireland, Belgium, Belarus and the United Kingdom
- 20% of all reported infections with information available were in a health care worker
- 79% of all ICU admissions were in persons aged 50-79 years of age, with 70% of all ICU admissions in men
- 72% of cumulative deaths were reported from the United Kingdom, Italy, Spain and France
- 94% of all deaths were in persons aged ≥ 60 years and 58% of all deaths were in men
- 95% of all deaths with information available had at least one underlying condition, with cardiovascular disease the leading comorbidity (65%)
- From week 10, 2020 and as of week 22, there were more than 172,400 excess deaths reported from 24 countries/regions. Primarily in the age group ≥ 65 years with over 157,400 excess deaths, but also in the 45-64 years age group with over 12,900 excess deaths. This time period includes part of the influenza season as well as the start of the COVID-19 pandemic. See [European Mortality Bulletin](#)
- In week 22/2020, five countries reported a total of 281 tests and 18 COVID-19 detections in persons with influenza-like illness in primary care sentinel surveillance. The updated positivity rate in week 21/2020 was 4.1% (8 countries) compared to 6.5% (8 countries) in week 20/2020. The highest positivity was 19.1%, seen in week 15/2020
- As of 21 May 2020, three countries in the European region had an effective reproductive number significantly over 1: France, Israel and Kazakhstan (See [EpiForecasts and the CMMID COVID working group COVID-19 Global Summary for latest estimates](#))

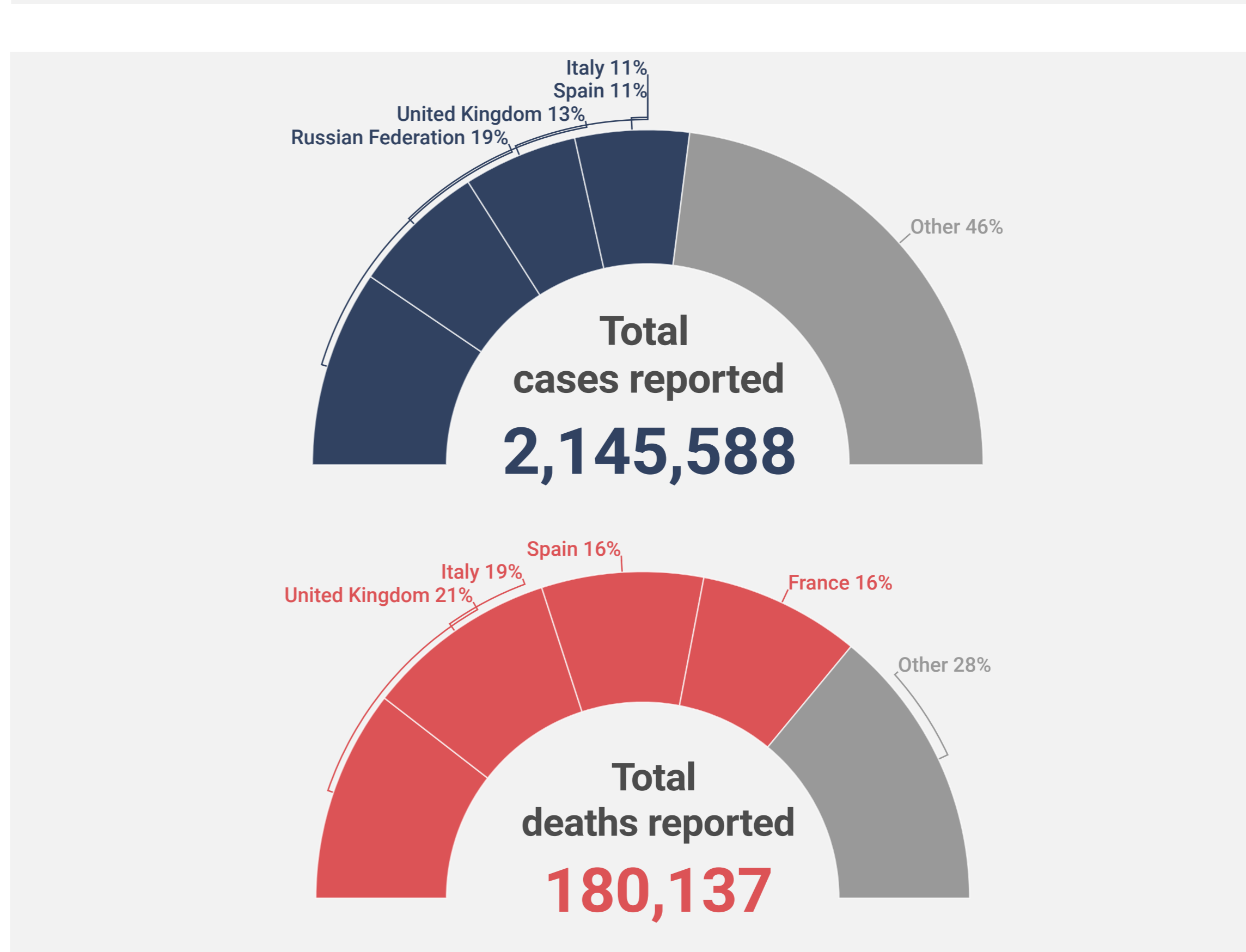
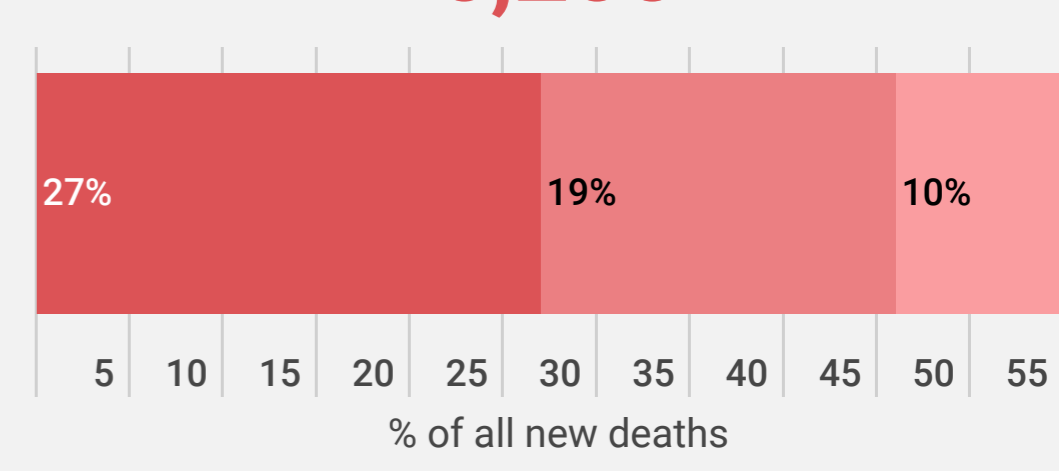
New cases Epi week 22

136,000



New deaths Epi week 22

6,200



20% of all people infected were health care workers

95% of all deaths had at least 1 underlying condition

58% of all deaths were in men

79% of all ICU admissions were people aged 50-79 years

94% of all deaths were in persons aged 60+

65% of all deaths had cardiovascular disease

For more detailed information see: [WHO Global situation reports](#) [WHO Global situation dashboard](#)

Figure 1: Number of COVID-19 cases (N=2,145,588) and deaths (N=180,137) by reporting week

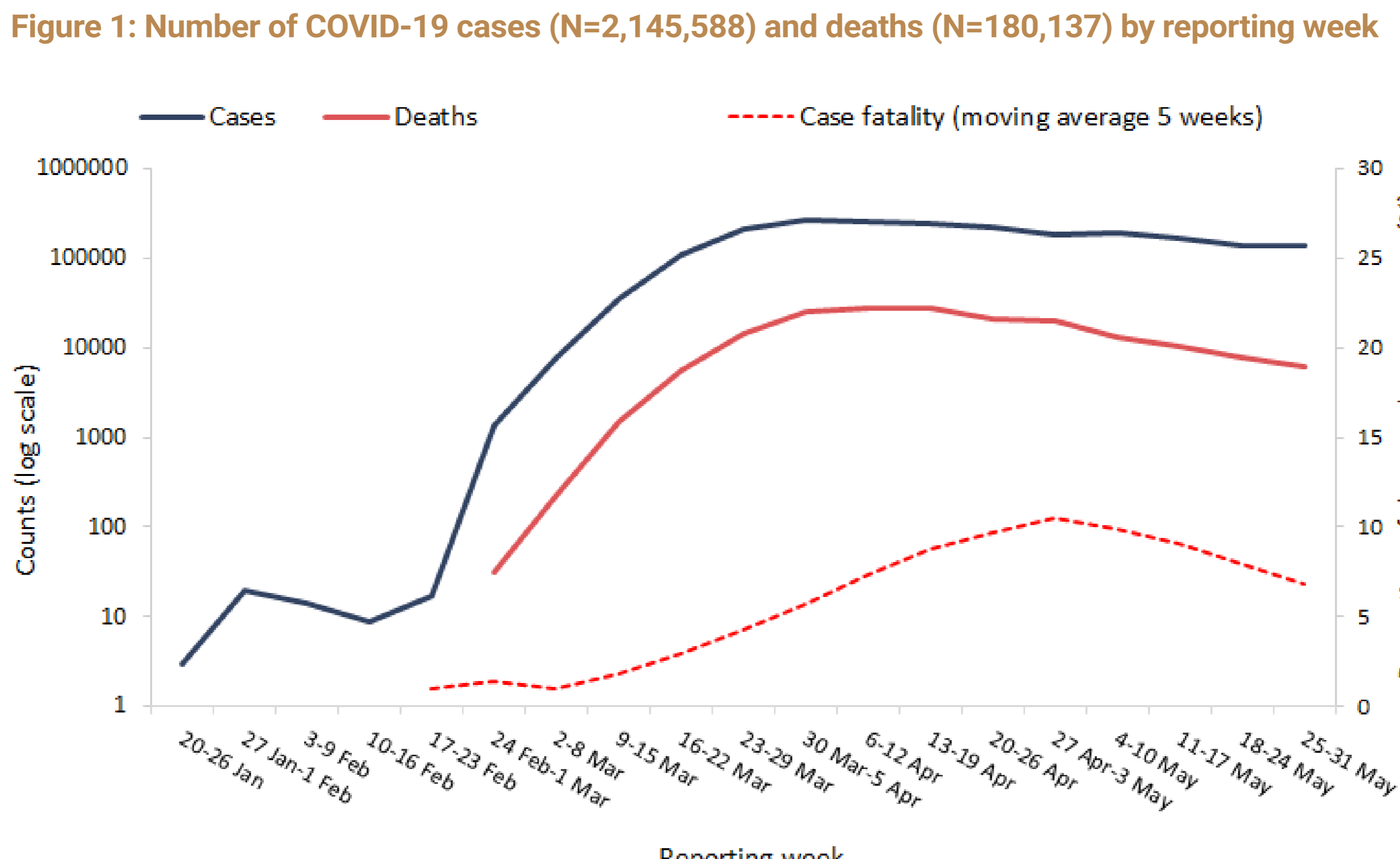


Figure 2A. COVID-19 incidence per 100,000 population and number of deaths by country for week 22

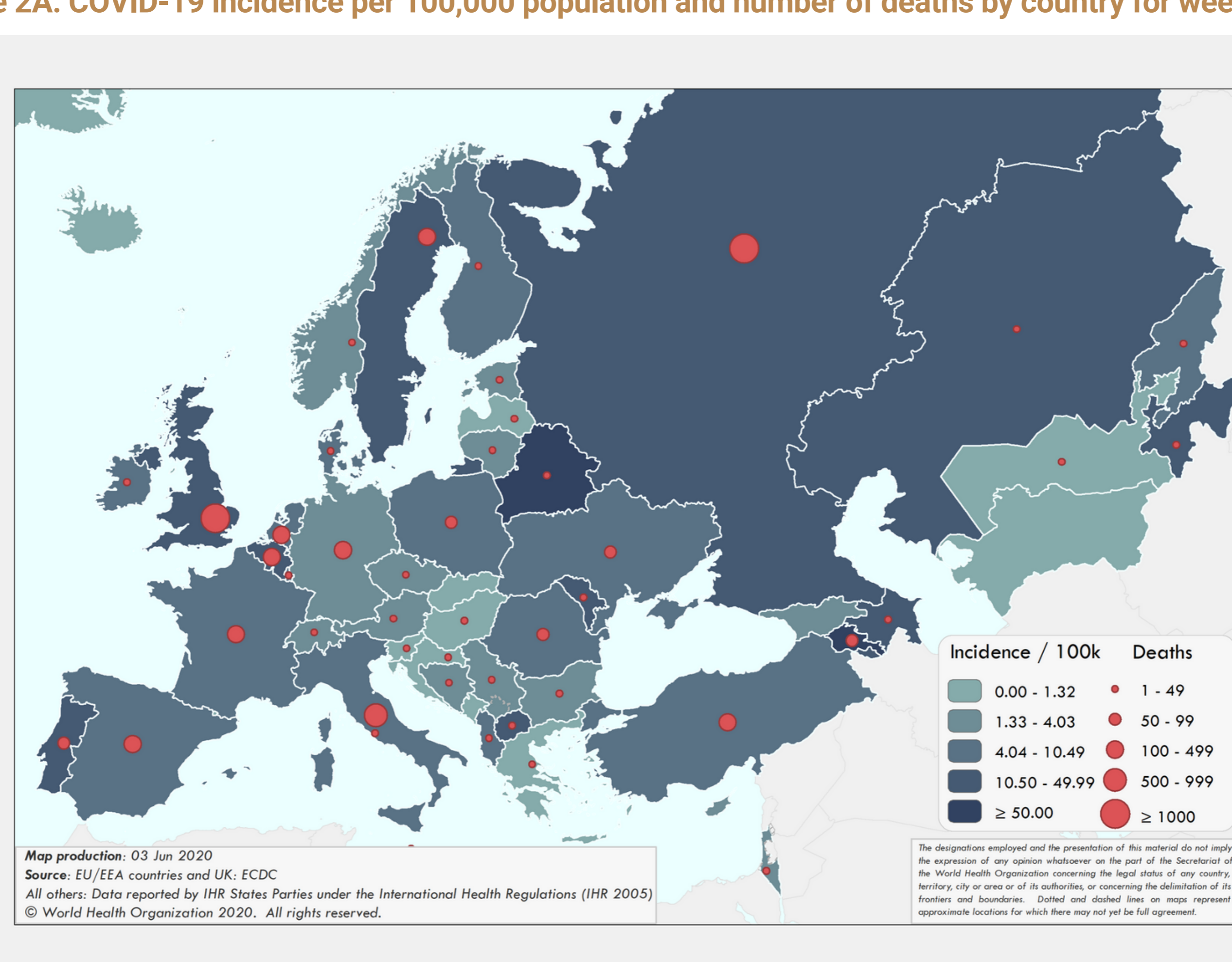


Figure 2B. COVID-19 cumulative incidence per 100,000 population and number of deaths by country

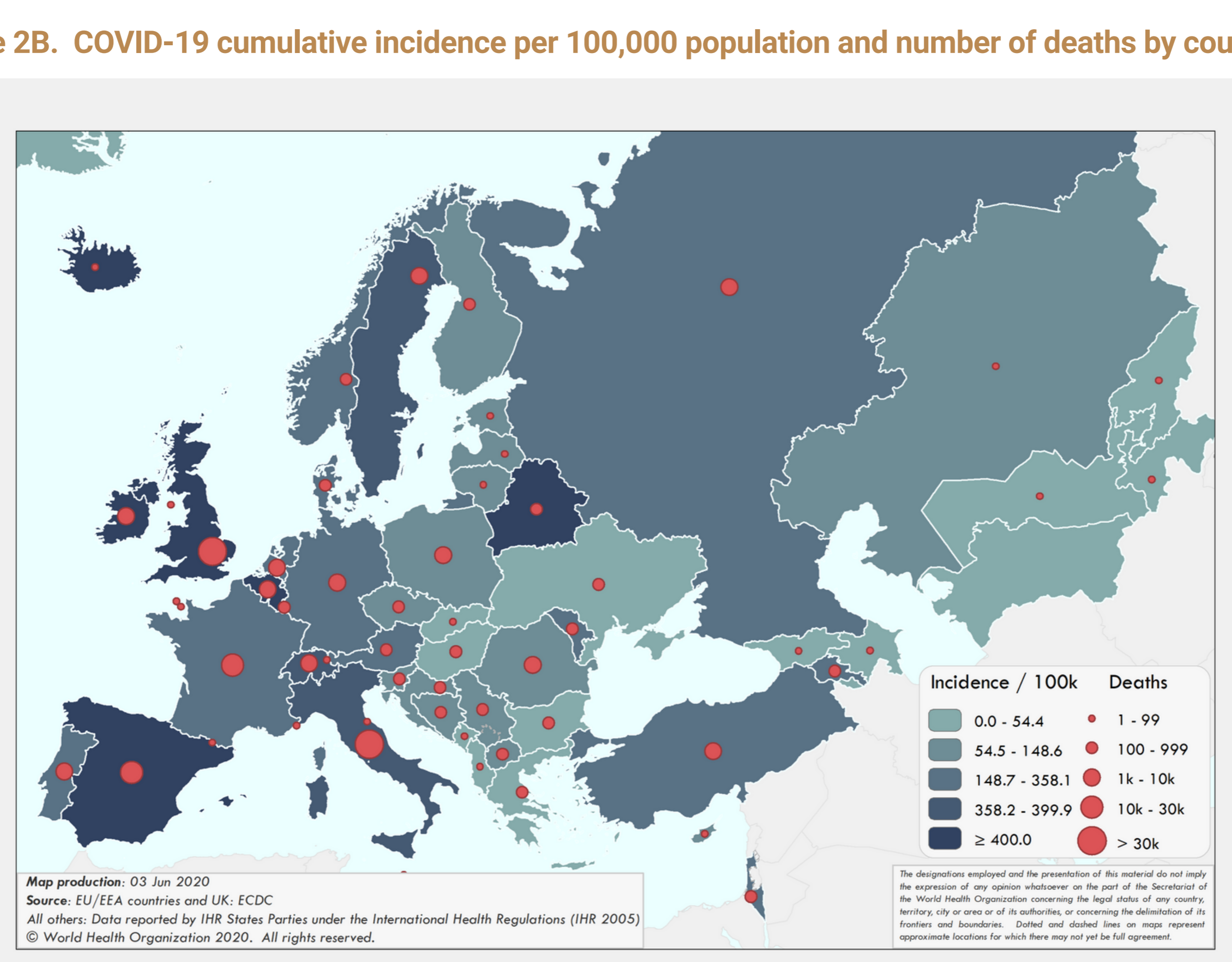


Figure 3. Percentage of COVID-19 cases (N=780,196) and deaths (N=112,132) by age group

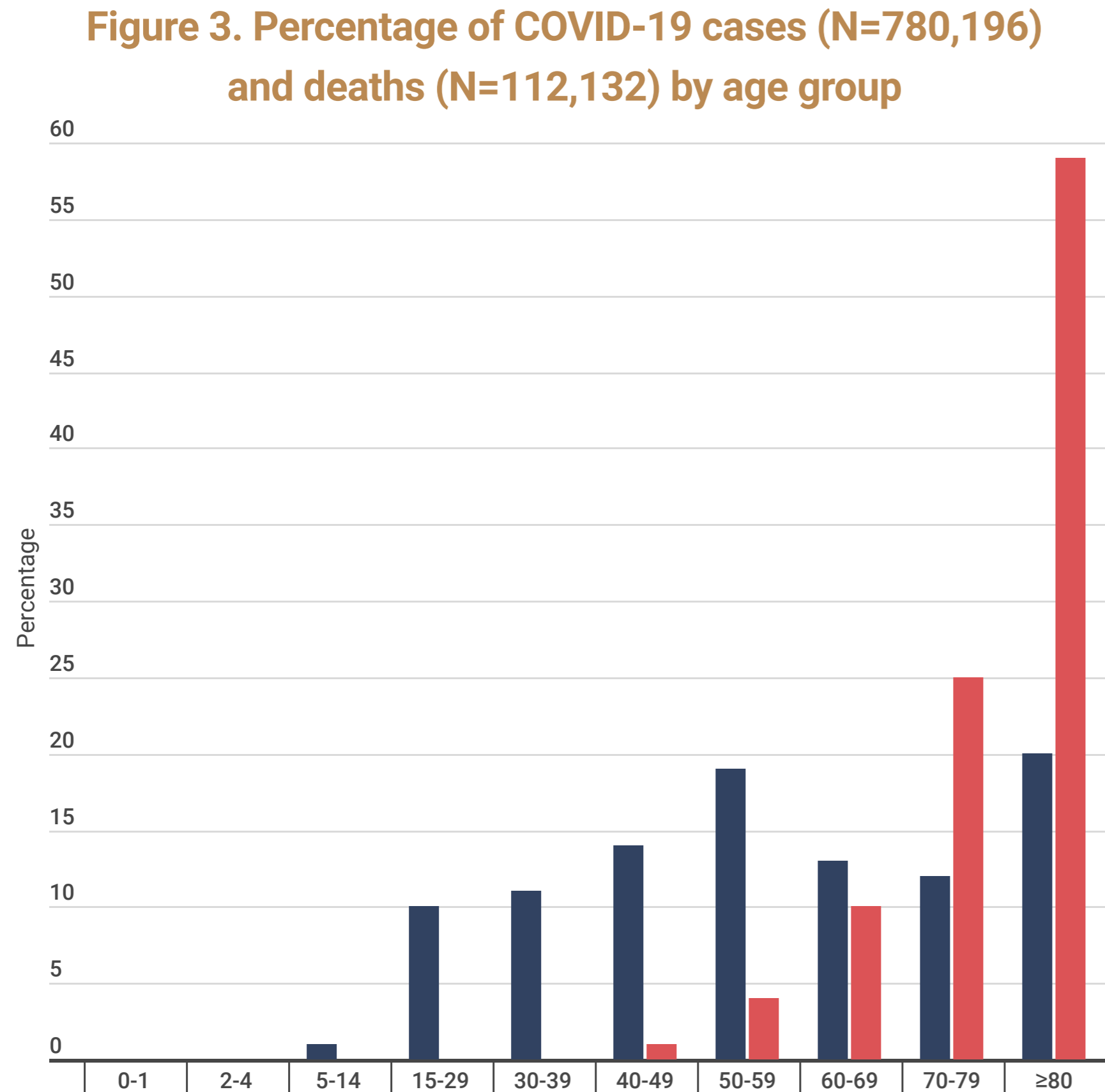


Table 1. Characteristics of COVID-19 cases and deaths

Characteristics	Total records with data available	
	n	%
Cases		
Age in years, median (range)*	55 (1-105)	532,586
Sex, male*	246,486	47
Travelled*	17,399	12
Recovered*	199,172	90
Health care workers*	87,016	20
Hospitalization*	127,754	25
Intensive care unit admissions*	9,826	2
Deaths		
Age in years, median (range)*	81 (0-108)	112,132
Sex, male*	64,491	59
At least one underlying condition*	54,284	95
• cardiovascular disease	17,273	65
• diabetes	8,575	33
• lung disease	5,954	23
• neurological disease / dementia	2,203	26
• renal disease	1,539	20
• malignancy	899	25
• obesity	623	9
• liver disease	368	5
• immune disease	257	3
• other	12,575	52

Figure 4. Percentage of COVID-19 cases (N=775,920), hospitalizations (N=131,978), ICU admissions (N=12,226) and deaths (N=111,985) by age group and sex

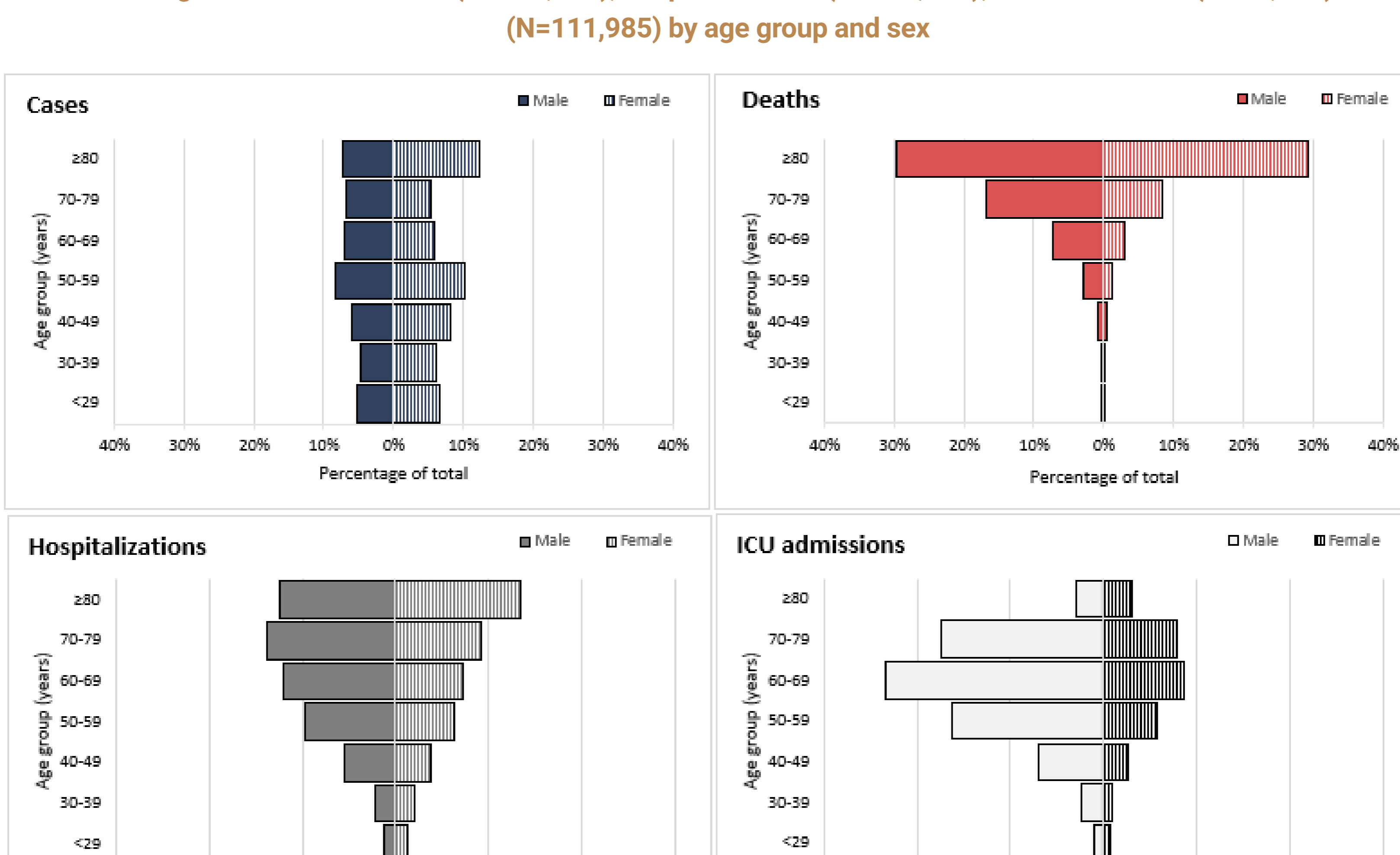


Figure 5. Percentage positive for COVID-19 in the ILI/ARI sentinel surveillance by reporting week

