

Best viewed using Chrome, Safari or Internet Explorer 9 or higher. If you are having trouble viewing this page please [click here](#) for the alternative viewer.
Please note that the COVID-19 epidemiological report will next be published on 8 January 2021.

Key points

Week 51/2020 (14 - 20 Dec 2020)

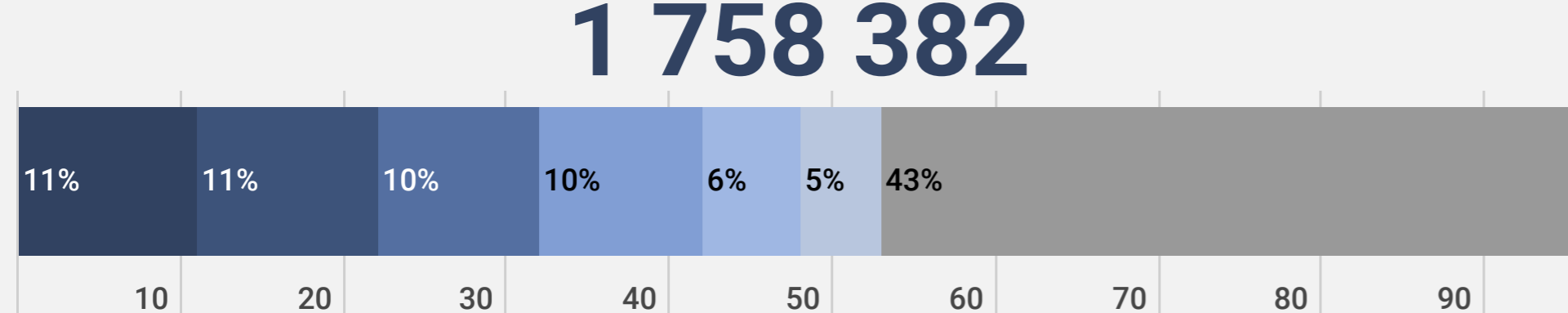
- The number of cases reported in the Region increased 3.6% to 1 758 382 in week 51/2020 (from 1 695 666 in week 50/2020)
- 54% (943 025) of the cases reported in week 51/2020 were reported from six countries: Turkey (11%; 194 476), Russian Federation (11%; 194 449), Germany (10%; 173 293), United Kingdom (10%; 173 263), Italy (6%; 112 308) and France (5%; 95 236). The remaining cases (46%; 815 357) were reported by 53 countries and territories; each accounted for <5% of the total cases reported in week 51/2020
- The crude incidence continues to vary across the region with a range from 3 per 100,000 population in Uzbekistan to 697 per 100,000 population in Lithuania in week 51/2020
- Five countries had a crude incidence of ≥ 500 per 100 000 population in week 51/2020: Lithuania (698), Liechtenstein (586), Croatia (543), San Marino (517) and Serbia (504) (Figure 2A). A total of 29 countries had a crude incidence of ≥ 200 per 100 000 population in week 51/2020
- The 14-day cumulative incidence increased by $\geq 10\%$ in week 50/2020 in 24 countries and territories in the Region; an increase of $\geq 50\%$ was observed in five of these countries and territories: Faroe Islands, Jersey, Denmark, Israel, and Netherlands (see [EURO COVID-19 Dashboard](#) for recent trends)
- The number of deaths in the Region in week 51/2020 increased 4% to 36 847 (from 35 101 in week 50/2020) (Figure 1). The proportion of reported cases that died was 2.1% in week 51/2020
- 57% (21 017) of the deaths reported in week 51/2020 were reported by Italy (12%; 4 411), Germany (12%; 4 262), Russian Federation (11%; 3 917), United Kingdom (9%; 3 049), Poland (7%; 2 721) and France (7%; 2 657). The remaining deaths (43%; 15 830) were reported from 47 countries and territories; each accounted for <5% of the total deaths reported in week 51/2020
- Community-transmission was reported by 35 countries and territories, 19 countries and territories reported cluster transmission, while 4 countries and territories reported sporadic transmission in week 51/2020
- For an interactive subnational view of the recent COVID-19 situation in the WHO-EURO Region see the [WHO-EURO COVID-19 Subnational Explorer](#)

Summary overview

- On 14 December 2020, authorities from the United Kingdom of Great Britain and Northern Ireland (United Kingdom) reported a new variant of SARS-CoV-2 to WHO. It was identified by viral genomic sequencing, and is referred to as SARS-CoV-2 Variant Under Investigation, year 2020, month 12, variant 01 (SARS-CoV-2 VUI 202012/01). Initial analysis indicates that the variant may spread more readily between people. Investigations are ongoing to determine if it is associated with any change in the severity of infection, antibody response or vaccine efficacy. Please see Disease Outbreak News for further details
- The cumulative cases across the Region increased 8% to 23 765 789 cases in week 51/2020 (from 22 001 830 cases in week 50/2020) and cumulative deaths increased by 7.7% to 523 857 deaths (from 486 412 deaths in week 50/2020)
- As of 12 December 2020, 12 countries in the Region had an effective reproductive number significantly over 1: Gibraltar, Jersey, Monaco, Ireland, United Kingdom, Israel, Netherlands, Czech Republic, Denmark, Sweden, Germany and Latvia (See [EpiForecasts](#) and the CMMID COVID working group COVID-19 Global Summary for latest estimates)
- Nine countries in the Region each reported a cumulative incidence of ≥ 5000 cases per 100,000 population: Andorra (9800), Luxembourg (7157), Montenegro (7043), San Marino (6222), Czech Republic (5839), Belgium (5432), Georgia (5220), Armenia (5200) and Slovenia (5052) (Figure 2B)
- As of week 51/2020, 66% of cumulative deaths (347 590) were reported from Italy (13%; 68 447), UK (13%; 67 075), France (12%; 60 418), Russian Federation (10%; 50 858), Spain (9%; 49 346), Germany (5%; 26 049) and Poland (5%; 25 397). The remaining deaths (34%; 176 267) were reported by 52 countries and territories; each accounted for <5% of the total cases reported until week 51/2020
- 19.6% of cases were in persons aged ≥ 65 years in week 51/2020, a decrease from 36% in week 14/2020, while the percentage of fatal cases aged ≥ 65 years was 87% in week 51/2020 (compared to 91% in week 14/2020) (Figure 3)
- The latest weekly pooled [EuroMOMO](#) estimates show a substantial increased excess all-cause mortality overall for the participating European countries, coinciding with a reported increase in COVID-19 cases in several countries. This excess mortality is driven by a very substantial excess mortality in some countries, while other countries see normal mortality levels. The increased excess all-cause mortality is primarily seen among persons aged 45 years and older.
- In week 51/2020, 17 countries reported a total of 829 tests and 85 detections (10.3%) of SARS-CoV-2 in persons with influenza-like illness (ILI) in primary care sentinel surveillance (Figure 4)
- Overall, there were 941 910 COVID-19 cases among the total of 8 579 254 tests (9.5%) reported to have been performed in 31 countries in week 51/2020 (Figure 5)

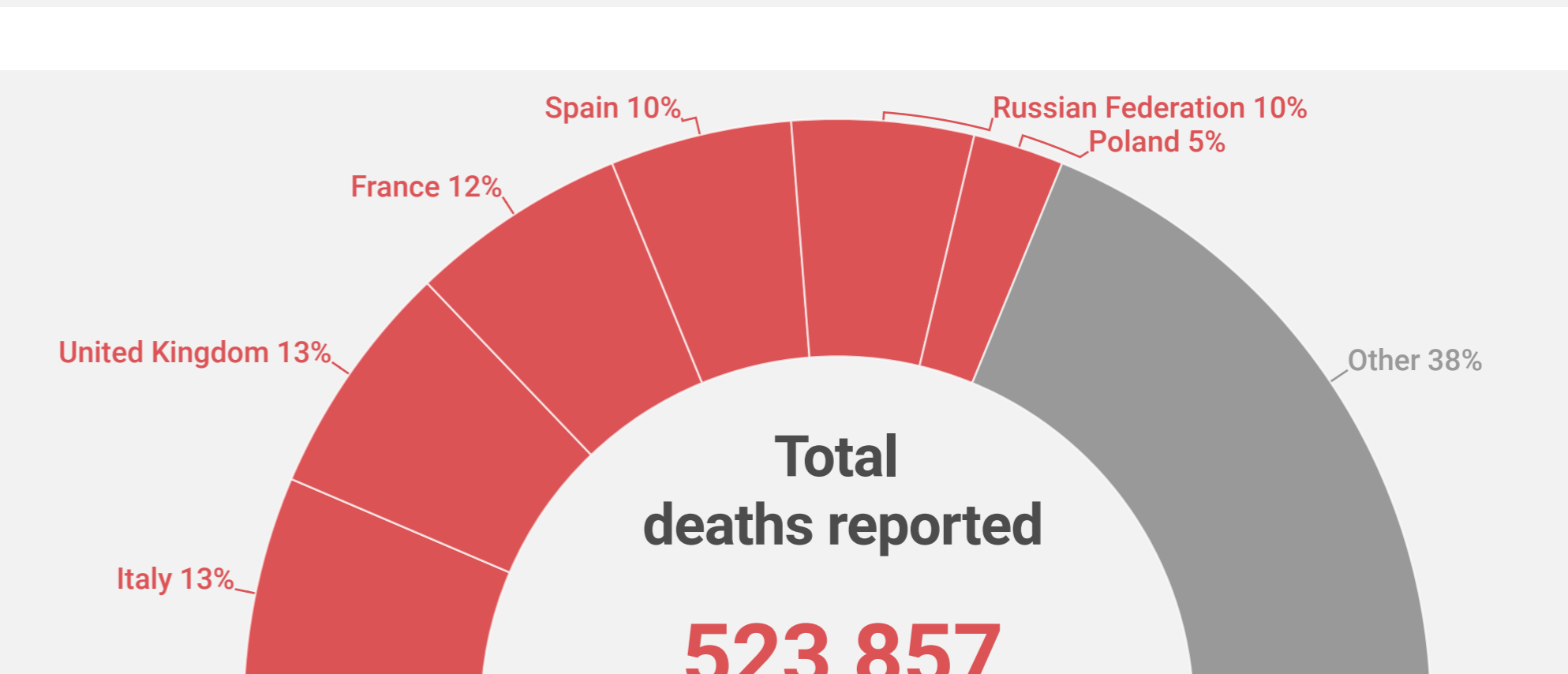
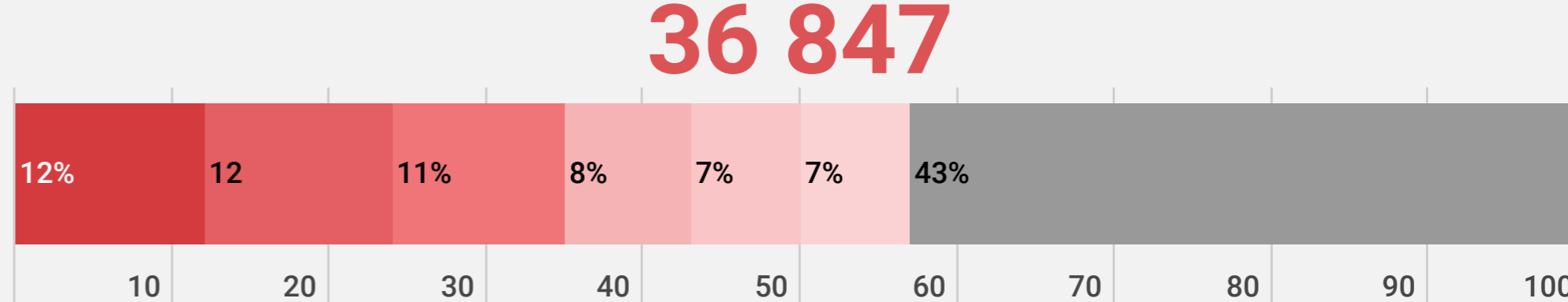
New cases (week 51/2020)

1 758 382



New deaths (week 51/2020)

36 847



Note: Reported cases and/or deaths from IHR States Parties may be subject to retrospective adjustments. * All references to Kosovo in this document should be understood to be in the context of the United Nations Security Council resolution 1244 (1999).

For more detailed information see: [WHO Global situation reports](#) [WHO Global situation dashboard](#)

Figure 1: Number of COVID-19 cases (N=22 001 830) and deaths (N=486 412) by reporting week

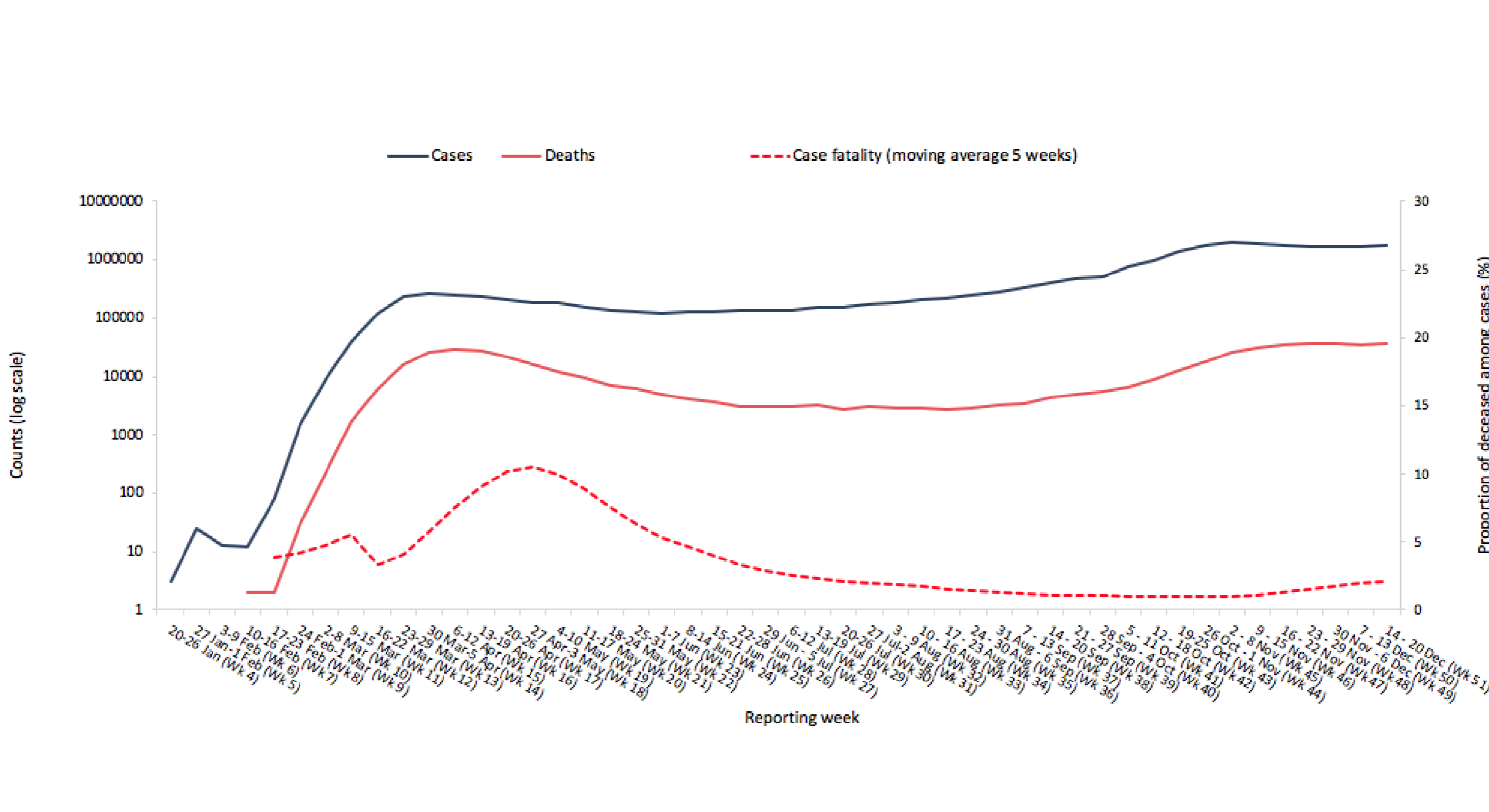
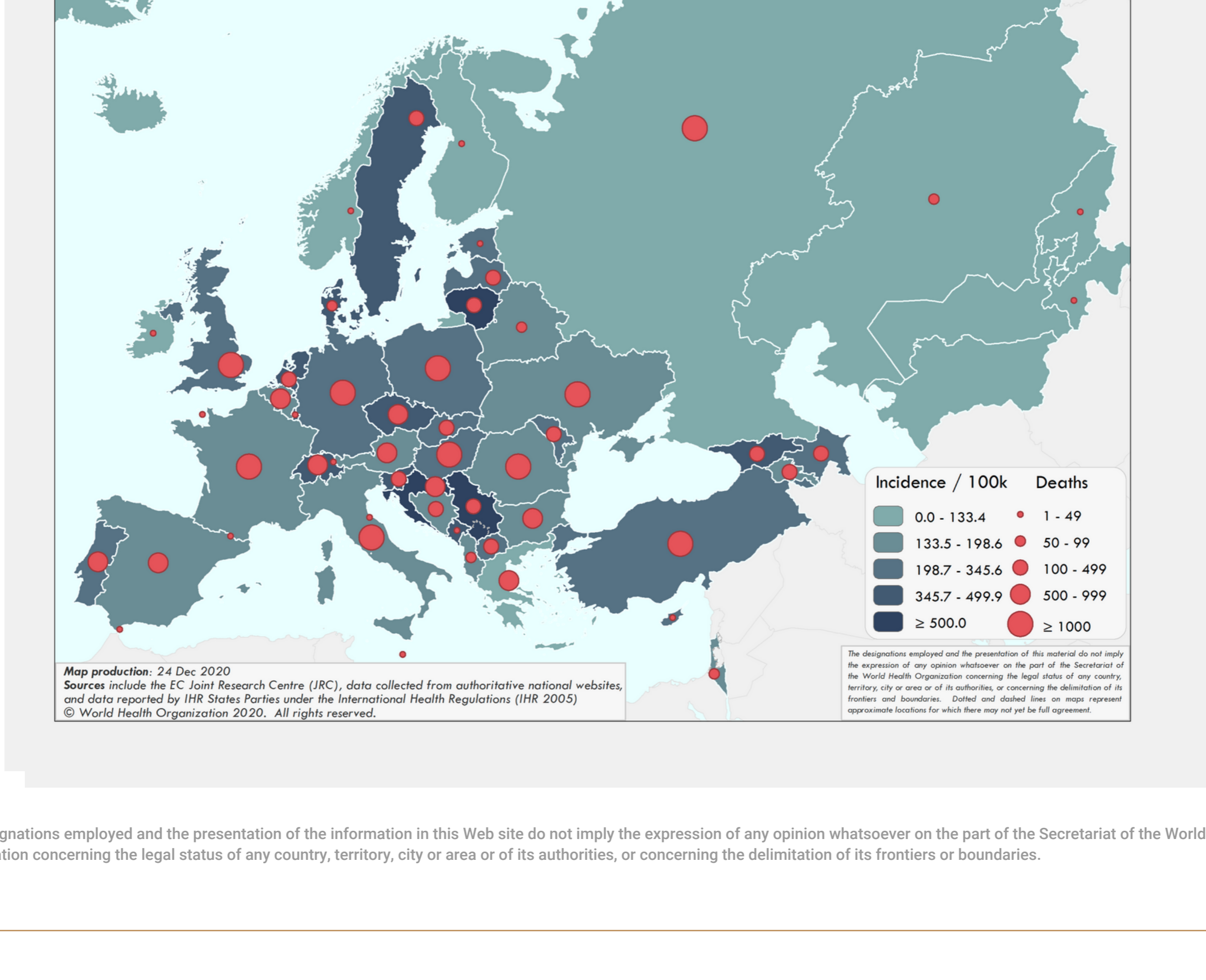
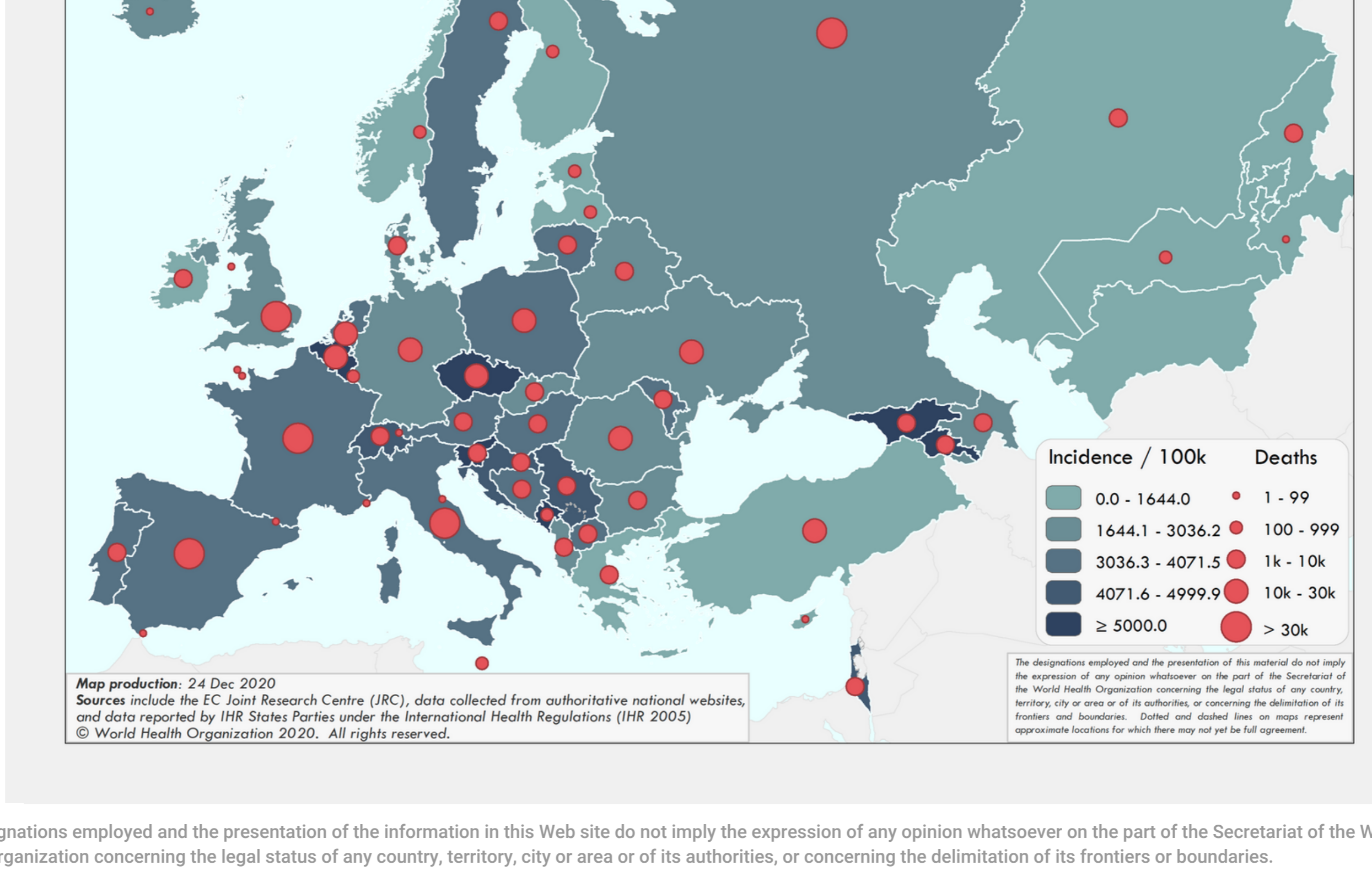


Figure 2A. COVID-19 incidence per 100,000 population and number of deaths by country for week 51



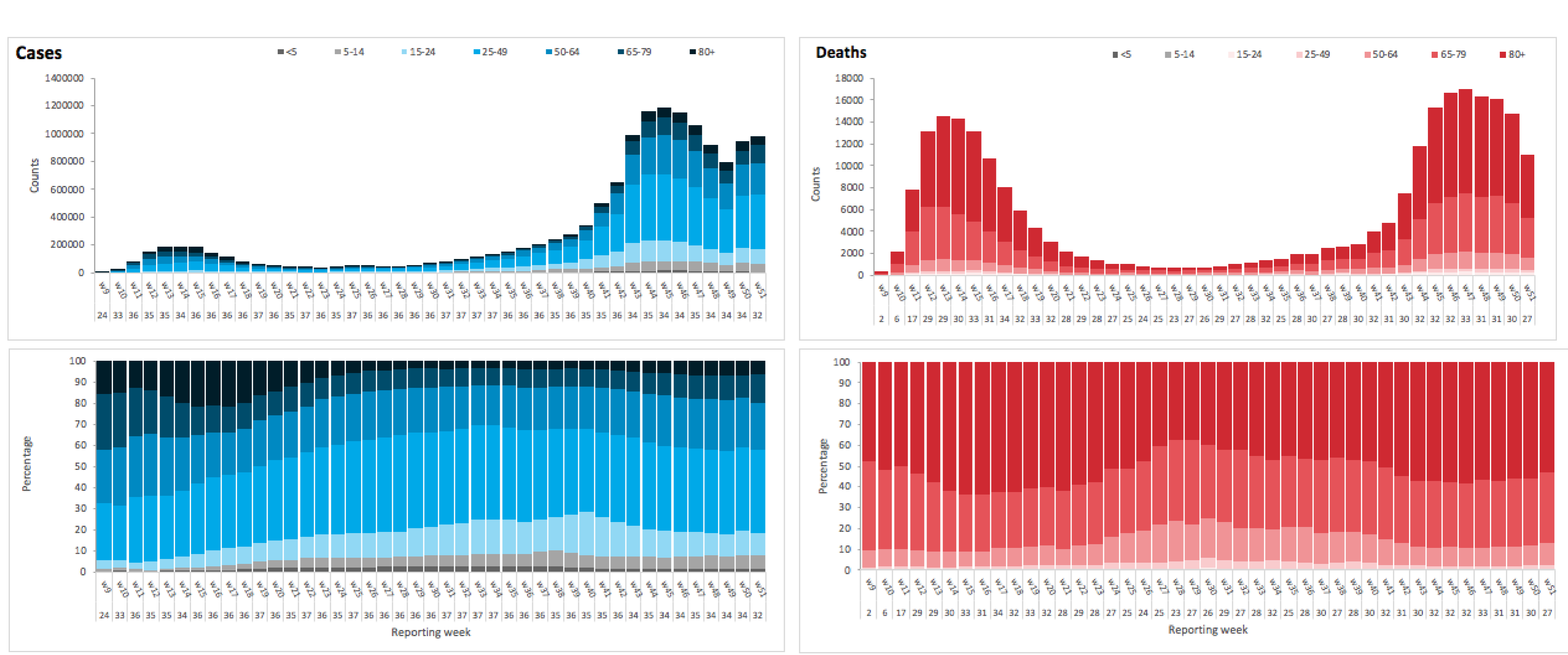
The designations employed and the presentation of the information in this Web site do not imply the expression of any opinion whatsoever on the part of the Secretariat of the World Health Organization concerning the legal status of any country, territory, city or area or of its authorities, or concerning the delimitation of its frontiers or boundaries.

Figure 2B. COVID-19 cumulative incidence per 100,000 population and number of deaths by country



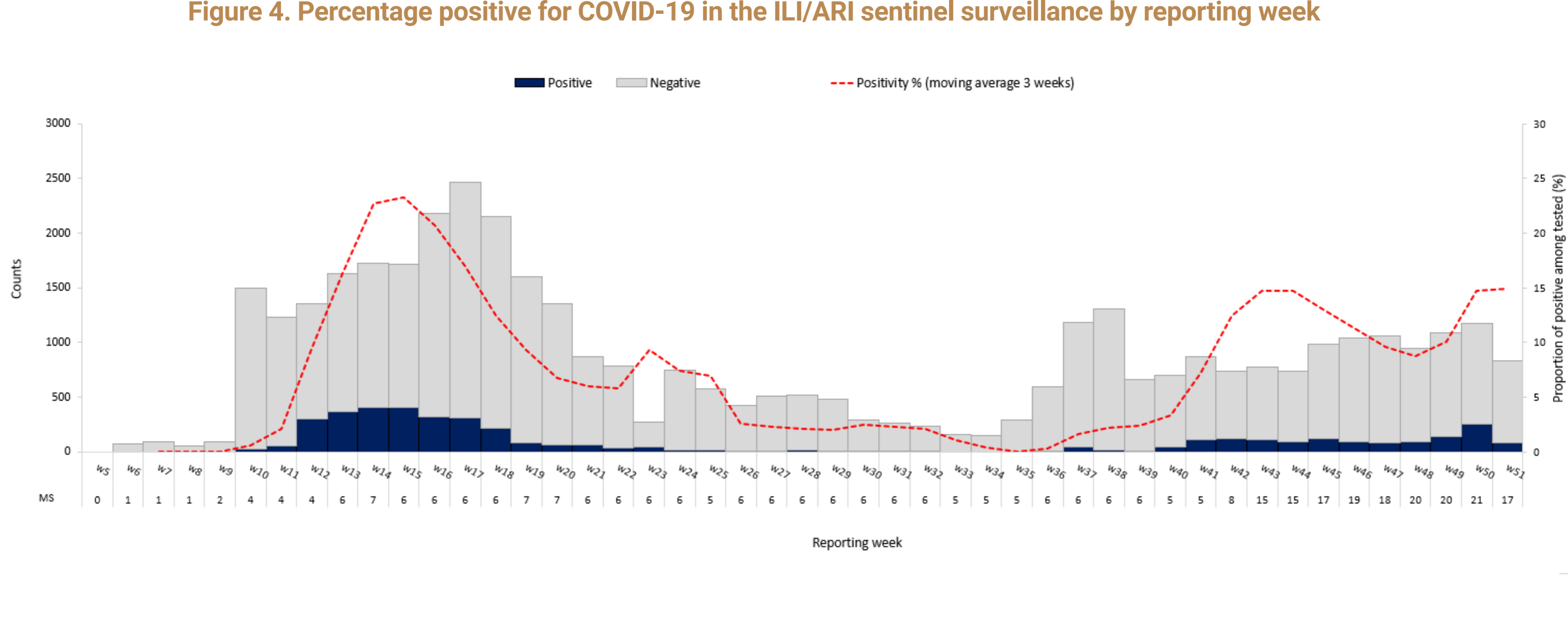
The designations employed and the presentation of the information in this Web site do not imply the expression of any opinion whatsoever on the part of the Secretariat of the World Health Organization concerning the legal status of any country, territory, city or area or of its authorities, or concerning the delimitation of its frontiers or boundaries.

Figure 3. COVID-19 cases (N=13 916 451) and deaths (N=257 523) by age group and reporting week



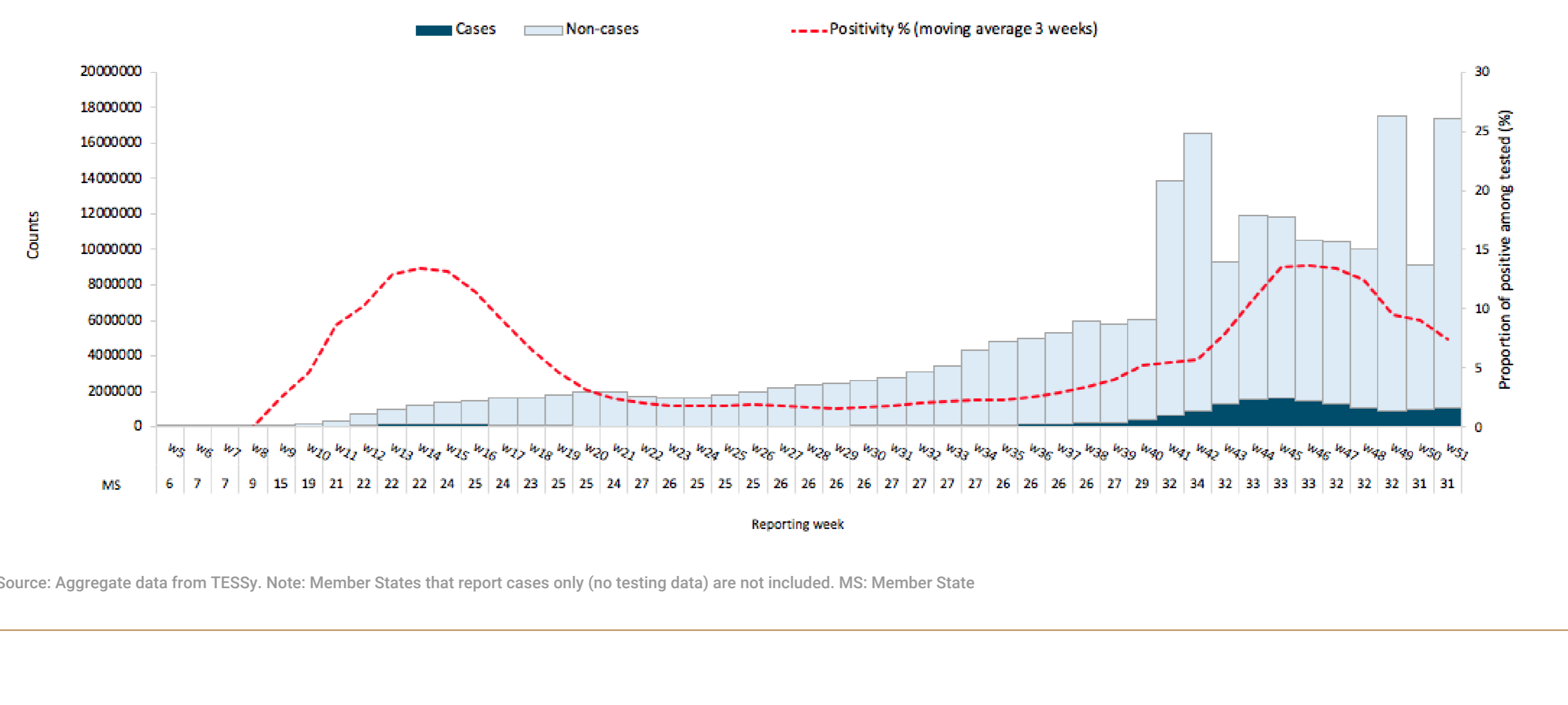
Source: Aggregate data from TESSy, MS: Member State

Figure 4. Percentage positive for COVID-19 in the ILI/ARI sentinel surveillance by reporting week



Source: Aggregate data from TESSy, MS: Member State

Figure 5. Percentage positive for COVID-19 among all tested by reporting week



Source: Aggregate data from TESSy. Note: Member States that report cases only (no testing data) are not included. MS: Member State