



Andorra, 9-11 March 2011

# Introduction, rationale and immediate tasks to advance the new European Health Policy: Health 2020

**Zsuzsanna Jakab**  
Regional Director



# WHO Regional Committee for Europe – sixtieth session

A new European health policy to tackle  
public health challenges



## Health 2020: A long tradition

- 1977 Health for All by the Year 2000
- 1978 The Declaration of Alma Ata on Primary Health Care
- 1996 The Ottawa Charter for Health Promotion
- 1998 Health21
- 2008 The Tallinn Charter

## Strengthening the health and public health systems

Renew the commitment to public health and rejuvenate the work of the Regional Office in this important area

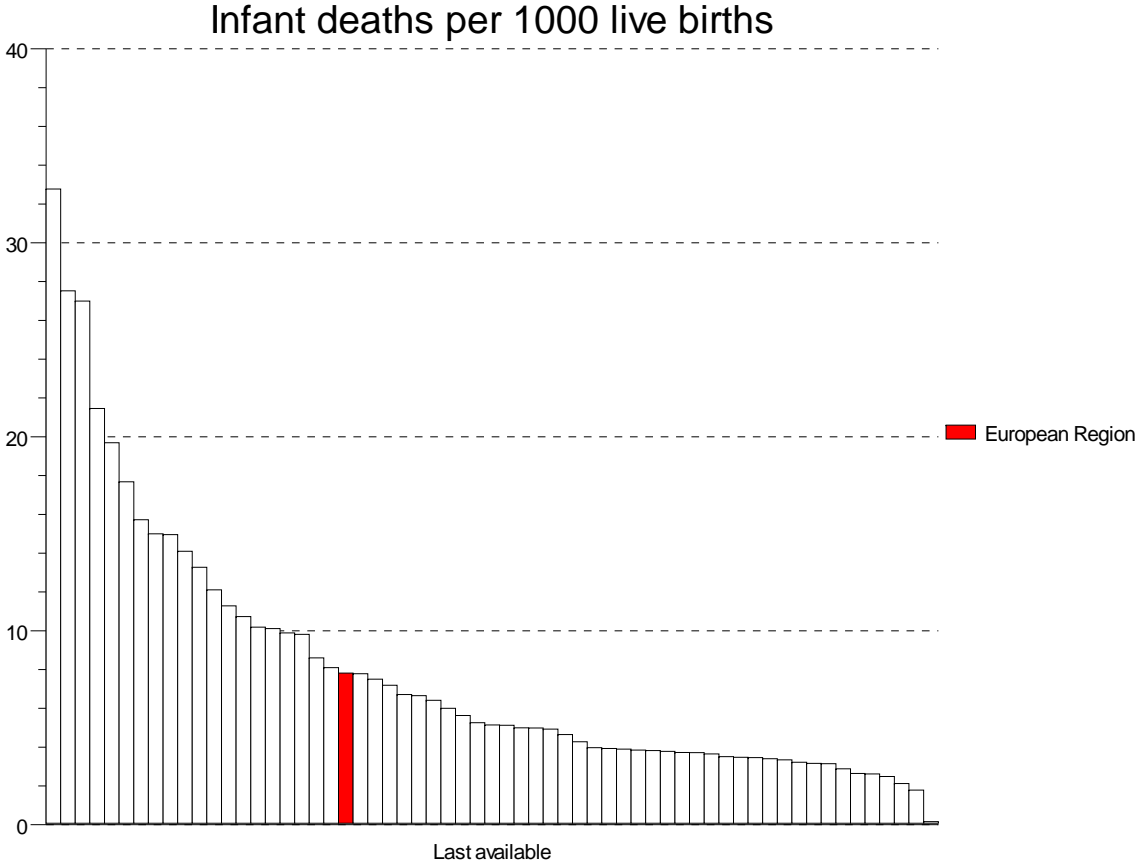


REGIONAL OFFICE FOR

World Health  
Organization  
Europe

to advance the new European Health  
Policy: Health 2020

# Health inequities in Europe

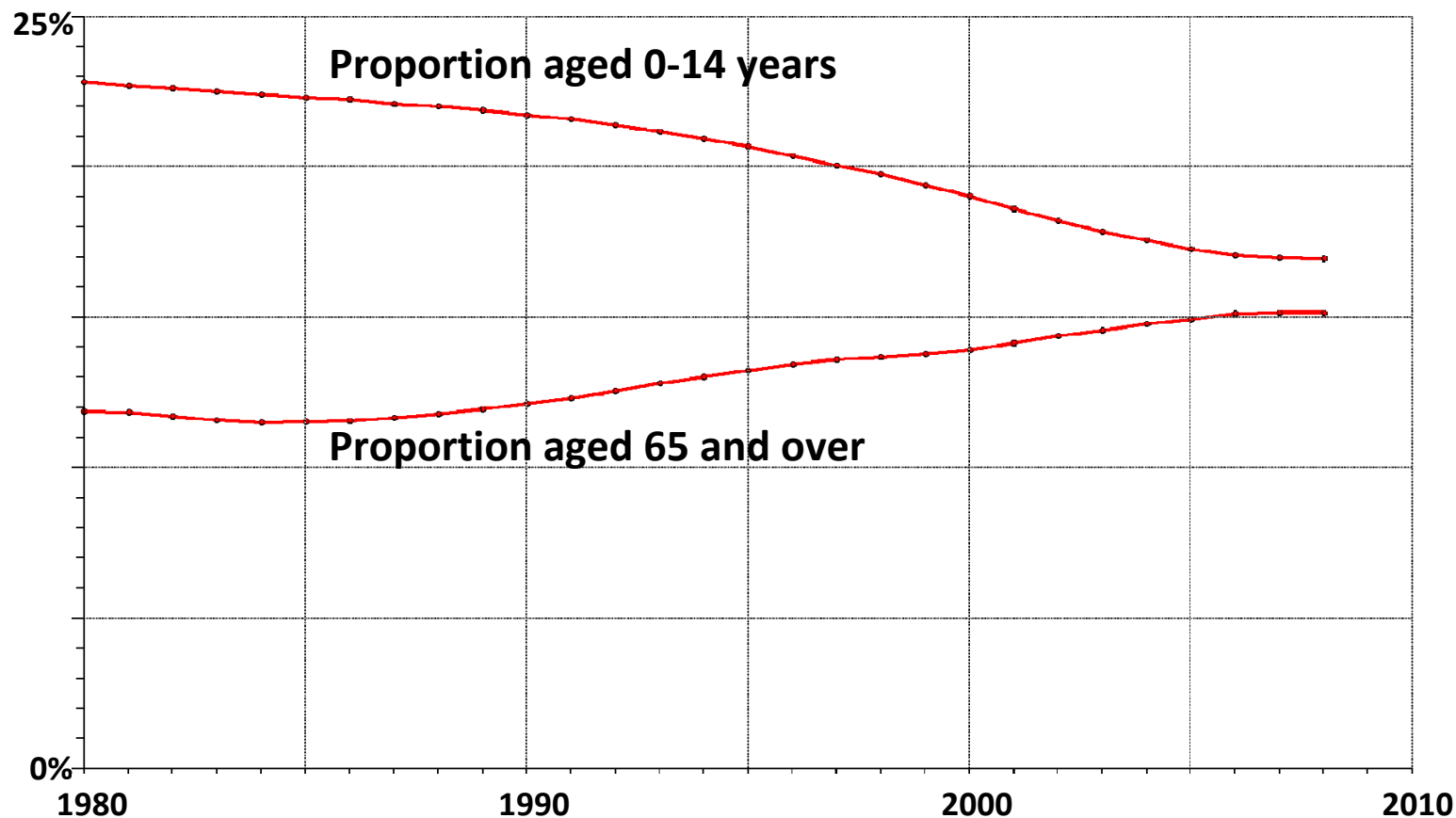


Source: WHO EURO (2011) Health For All Database.



# Demographic Shifts (1980 to 2010)

Changing distribution of population in WHO European Member States



Source: WHO EURO (2010) Health For All Database.

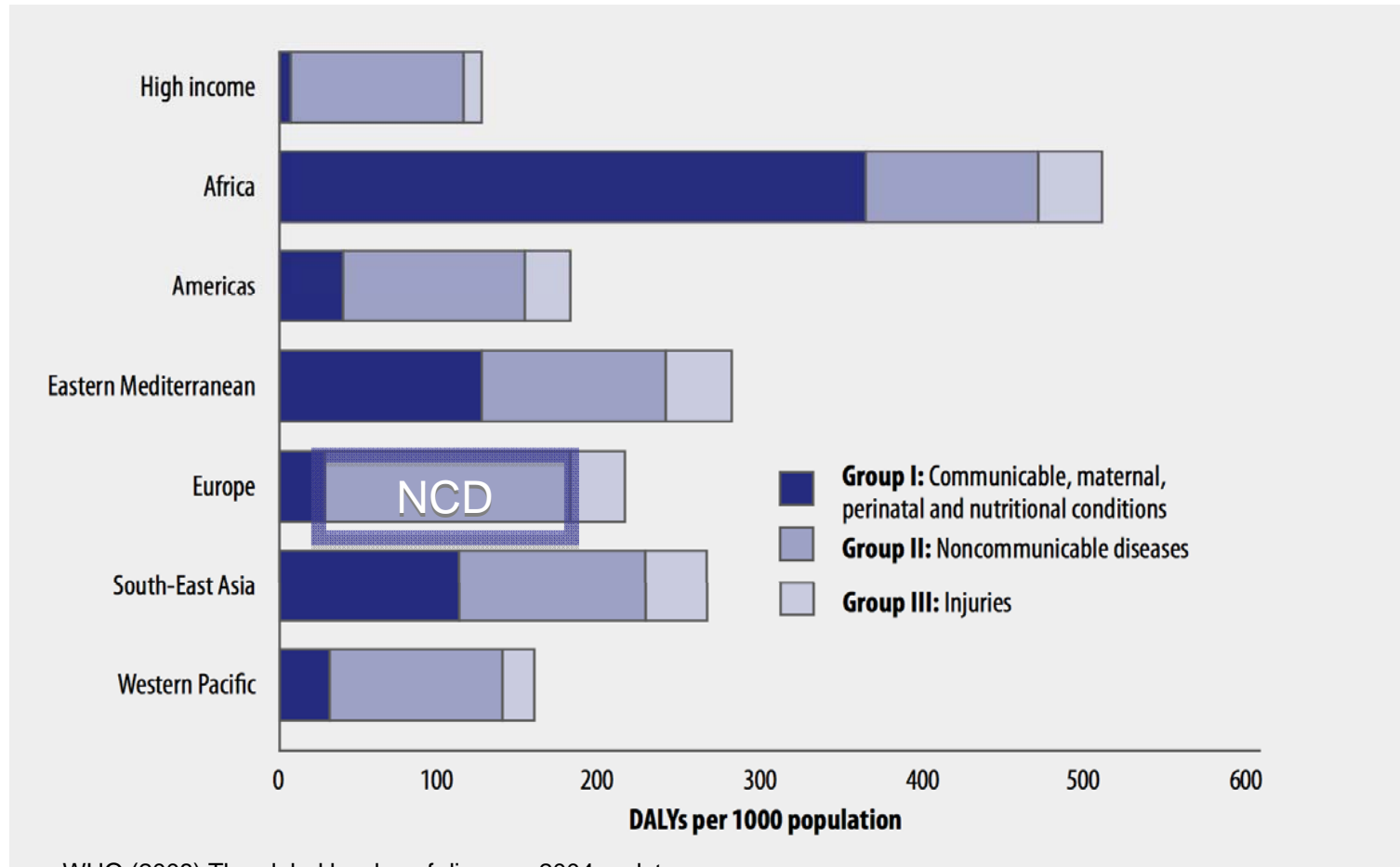


**World Health Organization**  
REGIONAL OFFICE FOR **Europe**

Introduction, rationale and immediate tasks  
to advance the new European Health  
Policy: Health 2020

# Burden of noncommunicable diseases

Burden of disease by broad cause group and region, 2004



Source: WHO (2008) The global burden of disease: 2004 update.

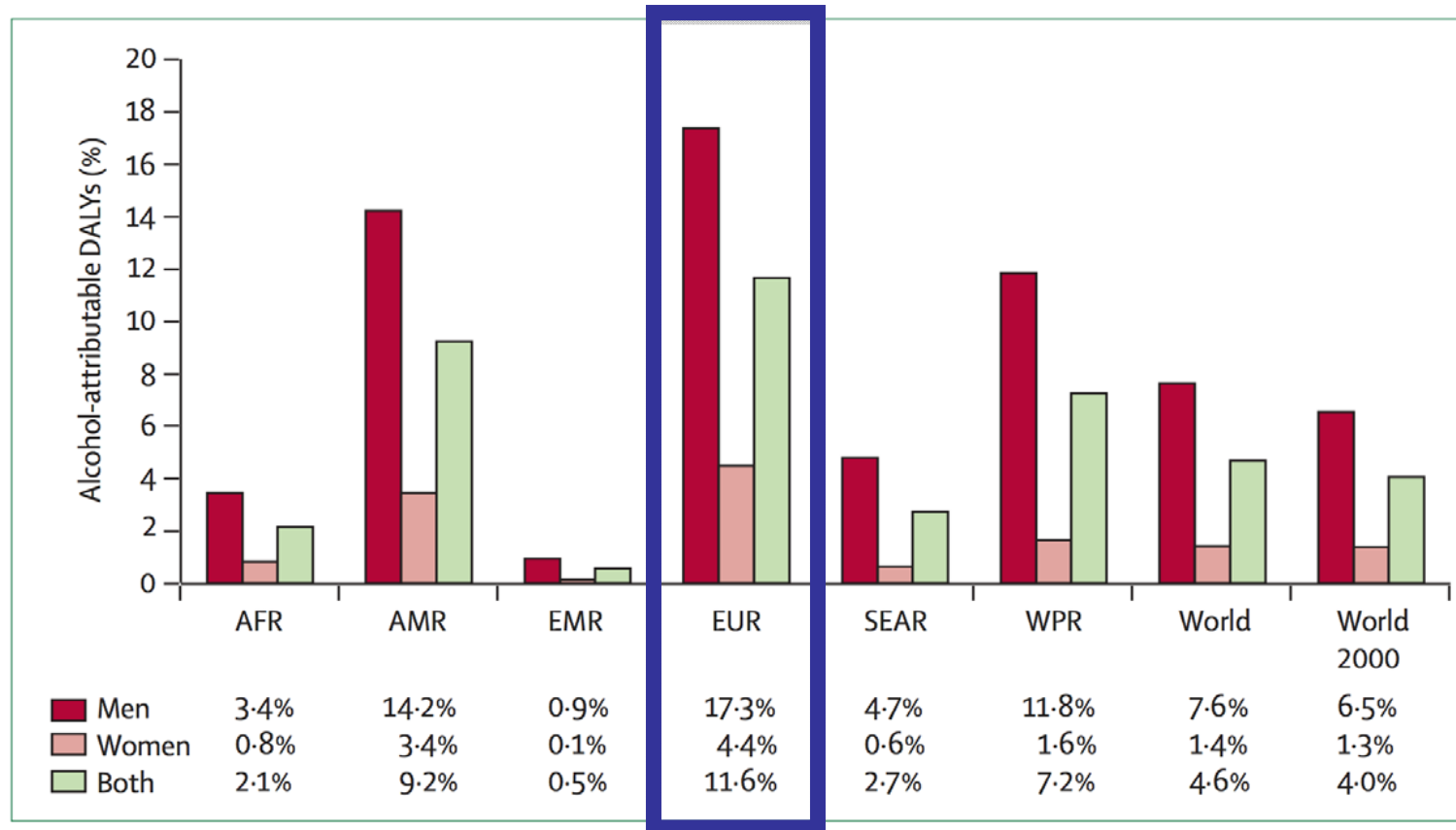


**World Health Organization**  
REGIONAL OFFICE FOR **Europe**

Introduction, rationale and immediate tasks  
to advance the new European Health  
Policy: Health 2020

# Alcohol-attributable DALYs

Alcohol-attributable burden of disease in disability-adjusted life-years (DALYs) as proportion of all DALYs by sex and WHO region in 2004

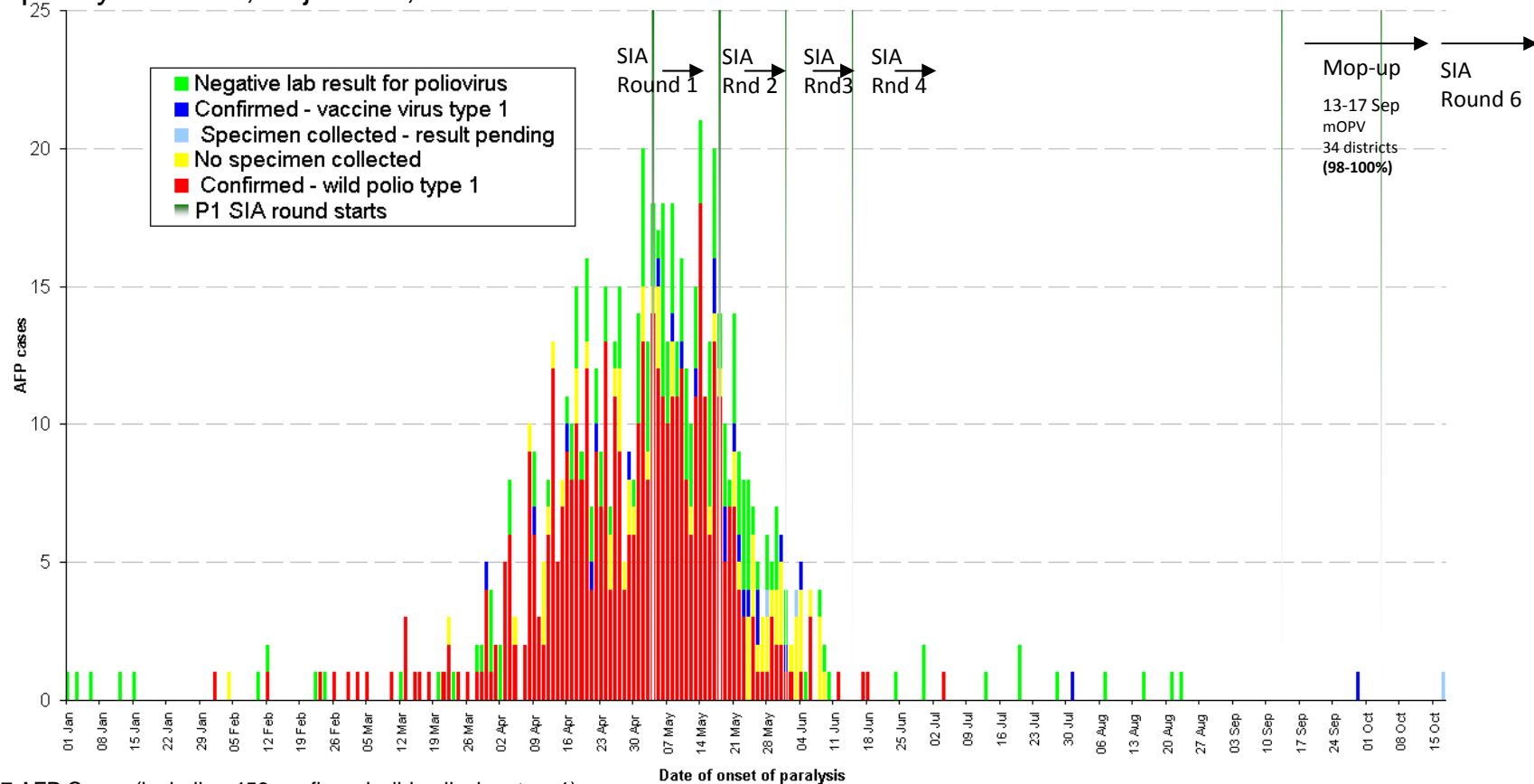


Source: Rehm J et al. Lancet 2009; 373: 2223–33.



# Communicable diseases

Laboratory confirmed polio cases, AFP cases negative for poliovirus, and AFP cases pending results by date of paralysis onset, Tajikistan, 2010



Total 707 AFP Cases (including 458 confirmed wild poliovirus type1)  
Data as of 28 October 2010

Source: Weekly AFP reporting to WHO European Region

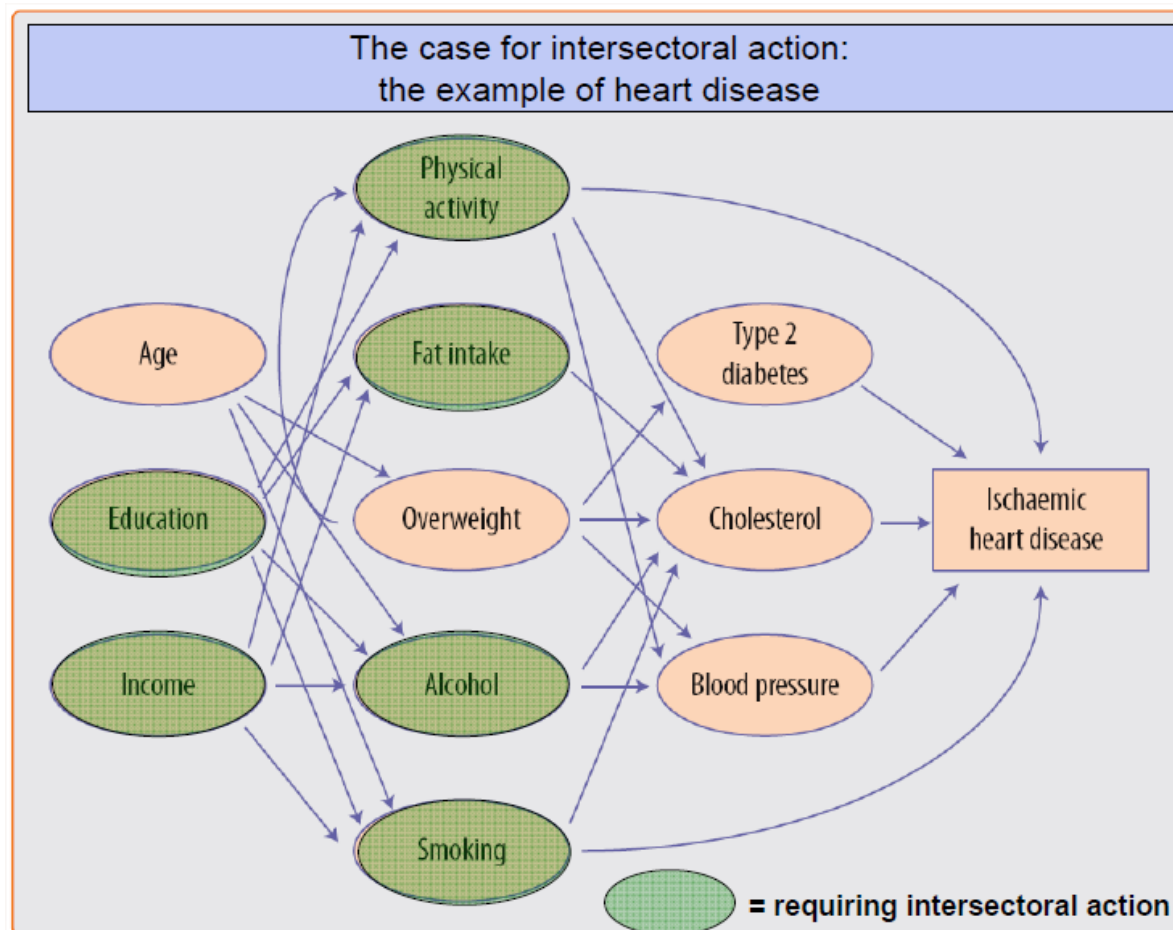
**World Health Organization**  
REGIONAL OFFICE FOR **Europe**

Introduction, rationale and immediate tasks to advance the new European Health Policy: Health 2020

# Vision of Health 2020

“A WHO European Region where all peoples are enabled and supported in achieving their full health potential and well-being, and in which countries, individually and jointly, work towards reducing inequalities in health within the Region and beyond”.

# Health in All Policies: An Intersectoral Approach



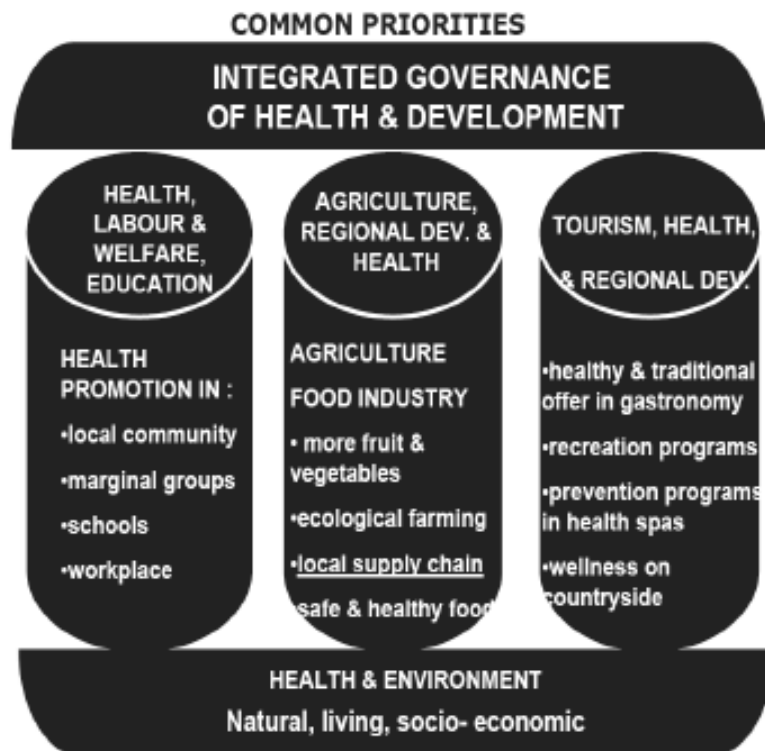
REGIONAL OFFICE FOR

**World Health  
Organization**  
**Europe**

Introduction, rationale and immediate tasks  
to advance the new European Health  
Policy: Health 2020

# Health in All Policies: Successes

Integrated health and development plans, e.g.:  
**Promurje region, Slovenia**



Whole-of-governemnt approach:  
**Scotland, United Kingdom**

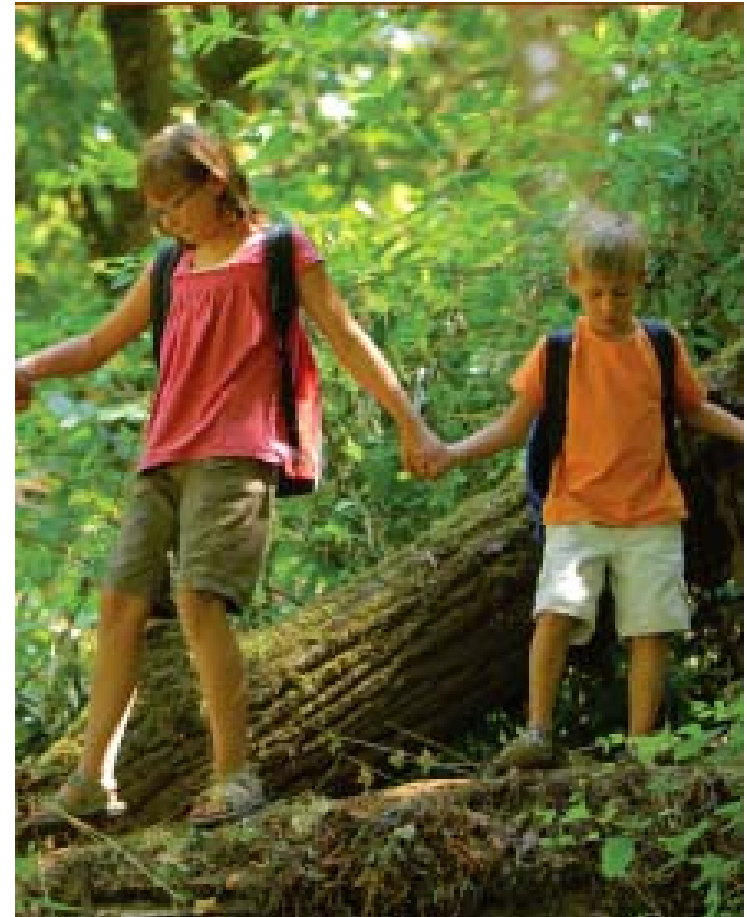


**World Health Organization**  
 REGIONAL OFFICE FOR **Europe**

Introduction, rationale and immediate tasks to advance the new European Health Policy: Health 2020

# WHO European Review on Social Determinants and the Health Divide

- Provide evidence on the nature and magnitude of health inequities across the Region and their relationship to social determinants
- Investigate gaps in capacity and knowledge to improve health through action on social determinants
- Synthesize evidence on the most promising policy options and interventions for addressing social determinants and reducing health inequities in diverse country contexts



**World Health  
Organization**  
REGIONAL OFFICE FOR **Europe**

Introduction, rationale and immediate tasks  
to advance the new European Health  
Policy: Health 2020

# New European Health Policy: Health 2020

- Developed through a participatory process with Member States, sectors and partners
- Informed and underpinned by a European study on social determinants
- Integrate policy areas and renew the commitment to public health
- Renew emphasis on further developing public health systems, capacities and functions and promoting public health as a key function in society
- Clarify the linkages between public health and the health care system, in particular primary health care (Tallinn Charter 2008)
- Position health as a critical development sector, and make linkages with and reach to the other sectors to promote health as a whole-of-government responsibility, with a strong leadership role by ministries of health;
- An inspiration to Member States to develop, renew and update their national health policy and strategies



# Strategic partnerships

- **Objective:** to create strategic relations with all partners in the public health arena at international, regional and national levels
- **New partnership strategy** to be presented for endorsement by the WHO Regional Committee for Europe in 2011
- **First steps taken: partnership agreement** with the European Commission (EC), discussions with the Global Fund and the Organisation for Economic Co-operation and Development (OECD)



# Better health for Europe



## The New European Health Policy – Health 2020



REGIONAL OFFICE FOR

**World Health  
Organization**  
**Europe**

Introduction, rationale and immediate tasks  
to advance the new European Health  
Policy: Health 2020