

FRANCE



Population: 62 787 430
Income group: High
Gross national income per capita: US\$ 42 190

INSTITUTIONAL FRAMEWORK

Lead agency	Interministerial Road Safety Task Force
Funded in national budget	Yes
National road safety strategy	Yes
Funding to implement strategy	Yes, fully funded
Fatality reduction targets set	Yes (by the end of 2012)
Fatality reduction target	Less than 3000 deaths

SAFER ROADS AND MOBILITY

Formal audits required for new road construction	Yes
Regular inspections of existing road infrastructure	Yes
Policies to promote walking or cycling	Yes
Policies to encourage investment in public transport	Yes
Policies to separate road users to protect VRUs	Yes

SAFER VEHICLES

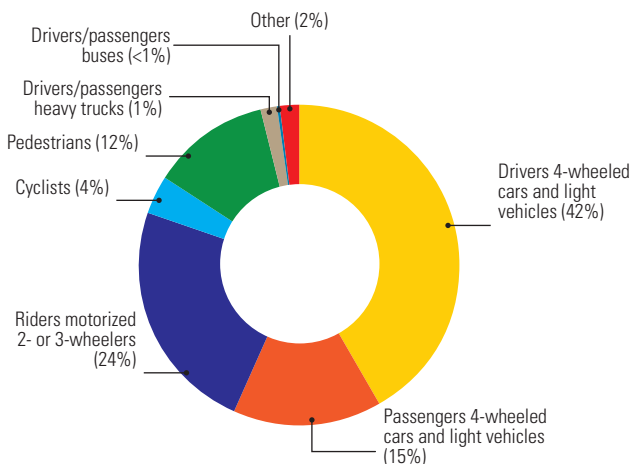
Total registered vehicles (2010)	34 276 000
Cars and 4-wheeled light vehicles	31 174 000
Motorized 2- and 3-wheelers	2 557 000
Heavy trucks	545 000
Buses	—
Other	—
Vehicle standards applied	
UN World forum on harmonization of vehicles standards	Yes
New car assessment programme	Yes
Vehicle regulations	
Front and rear seat-belts required in all new cars	Yes
Front and rear seat-belts required all imported cars	Yes

DATA

Reported road traffic fatalities (2010)	3 992 ^a , 76%M, 24%F
Estimated GDP lost due to road traffic crashes	1.3% ^b

^a Police records. Defined as died within 30 days of crash.
^b 2010, CARE project (European Commission).

DEATHS BY ROAD USER CATEGORY



Source: 2010, ONISR.

Further data on each country can be found in the statistical annex.

SAFER ROAD USERS

Penalty/demerit point system in place	Yes
National speed limits	Yes
Local authorities can set lower limits	Yes
Maximum limit urban roads	50 km/h
Enforcement	0 1 2 3 4 5 6 7 8 9 10
National drink-driving law	Yes
BAC limit – general population	0.05 g/dl
BAC limit – young or novice drivers	0.05 g/dl
BAC limit – professional/commercial drivers	0.02–0.05 g/dl ^e
Random breath testing and/or police checkpoints	Yes
Enforcement	0 1 2 3 4 5 6 7 8 9 10
% road traffic deaths involving alcohol	31% ^d
National motorcycle helmet law	Yes
Applies to drivers and passengers	Yes
Helmet standard mandated	Yes
Enforcement	0 1 2 3 4 5 6 7 8 9 10
Helmet wearing rate	88–96% All riders ^e
National seat-belt law	Yes
Applies to front and rear seat occupants	Yes
Enforcement	0 1 2 3 4 5 6 7 8 9 10
Seat-belt wearing rate	96–99% All Occupants ^f
National child restraint law	Yes
Enforcement	0 1 2 3 4 5 6 7 8 9 10
National law on mobile phones while driving	Yes
Law prohibits hand-held mobile phone use	Yes
Law also applies to hands-free mobile phones	Yes

^e 0.02g/dl for drivers of buses and coaches, 0.05g/dl for truck drivers.

^d 2010, The National Interministerial Observatory for Road Safety (ONISR).

^e 2010, ONISR. 96% on motorway, 88% on 2 x 2 lanes separated by a median, 95% on other roads. 94% in large cities.

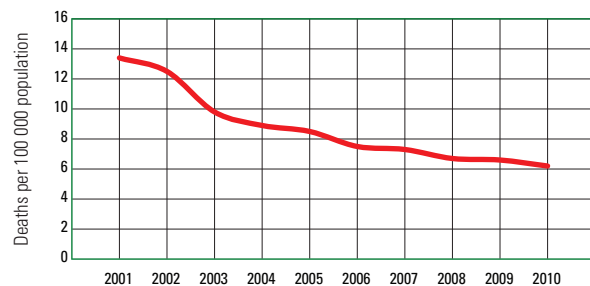
^f 2010, ONISR. 99% outside towns, 96% in towns, 98% for all networks.

POST-CRASH CARE

Vital registration system	Yes
Emergency Room based injury surveillance system	Yes
Emergency access telephone number(s)	112
Seriously injured transported by ambulance	≥75%
Permanently disabled due to road traffic crash	5% ^g
Emergency medicine training for doctors	Yes
Emergency medicine training for nurses	Yes

^g 2010, calculations using ONISR data.

TRENDS IN ROAD TRAFFIC DEATHS



Source: ONISR and CARE.