

Best viewed using Chrome, Safari or Internet Explorer 9 or higher. If you are having trouble viewing this page please click here for the alternative viewer.

## Key points

### Week 20/2020 (11 - 17 May 2020)

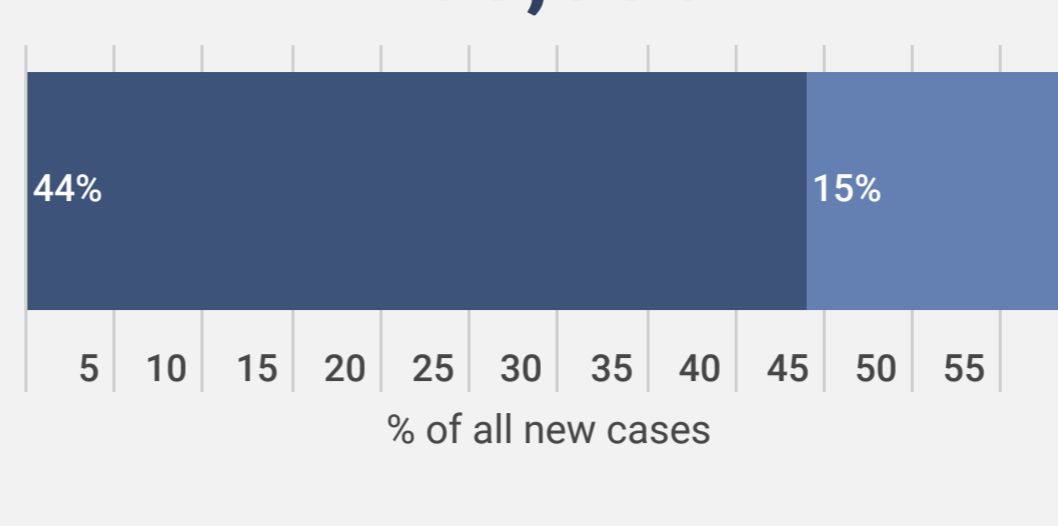
- The number of cases reported in week 20/2020 in the Region has declined by 37% since week 14/2020
- 59% of the cases reported in week 20/2020 were from the Russian Federation and the United Kingdom
- Two countries had a crude incidence of  $\geq 50$  per 100,000 in week 20/2020: Belarus and San Marino
- In nine countries, the 14-day cumulative incidence increased by  $\geq 10\%$  in week 20/2020 compared to the previous week: Tajikistan, Azerbaijan, Malta, Armenia, the Russian Federation, Kyrgyzstan, Belarus, Lithuania and the Republic of Moldova. (see [EURO COVID-19 Dashboard](#) for recent trends).
- 64% of the deaths reported in week 20/2020 were from the United Kingdom, Italy, France and Spain
- The proportion of reported cases that died decreased from 6.8% in week 19/2020 to 6.4% in week 20/2020, a change that is likely due to a range of factors

### Summary overview

- Seven countries in the Region each reported a cumulative incidence of  $\geq 400$  cases per 100,000 population: San Marino, Andorra, Luxemburg, Iceland, Spain, Ireland and Belgium.
- 19% of all reported infections with information available were in a health care worker
- 79% of all ICU admissions were in persons aged 50-79 years of age, with 70% of all ICU admissions in men
- 94% of all deaths were in persons aged  $\geq 60$  years and 59% of all deaths were in men
- 97% of all deaths with information available had at least one underlying condition, with cardiovascular disease the leading comorbidity (66%)
- 73% of cumulative deaths were reported from the United Kingdom, Italy, Spain and France
- From week 10, 2020 and as of week 20, there were more than 159,000 excess deaths reported from 24 countries/regions. Primarily in the age group  $\geq 65$  years with over 143,000 excess deaths, but also in the 15-64 years age group with over 13,000 excess deaths. This time period includes part of the influenza season as well as the start of the COVID-19 pandemic. See [European Mortality Bulletin](#)
- In week 20/2020, five countries reported a total of 211 tests and five COVID-19 detections in persons with influenza-like illness in primary care sentinel surveillance. The updated positivity rate in week 19/2020 was 4.3% (8 countries) compared to 9.5% (7 countries) in week 18/2020. The highest positivity was 18.6%, seen in week 15/2020.

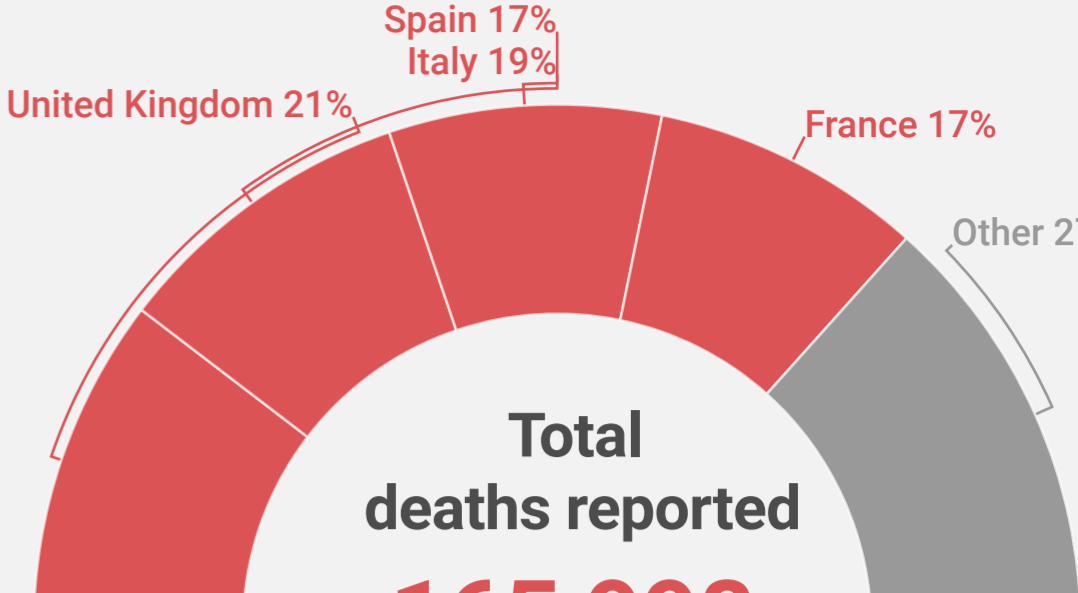
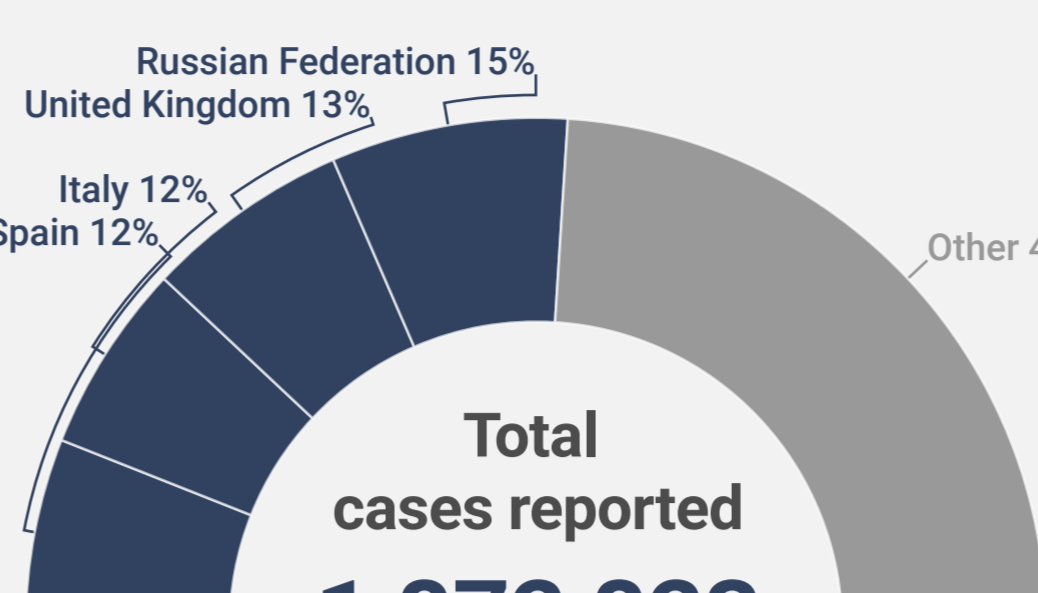
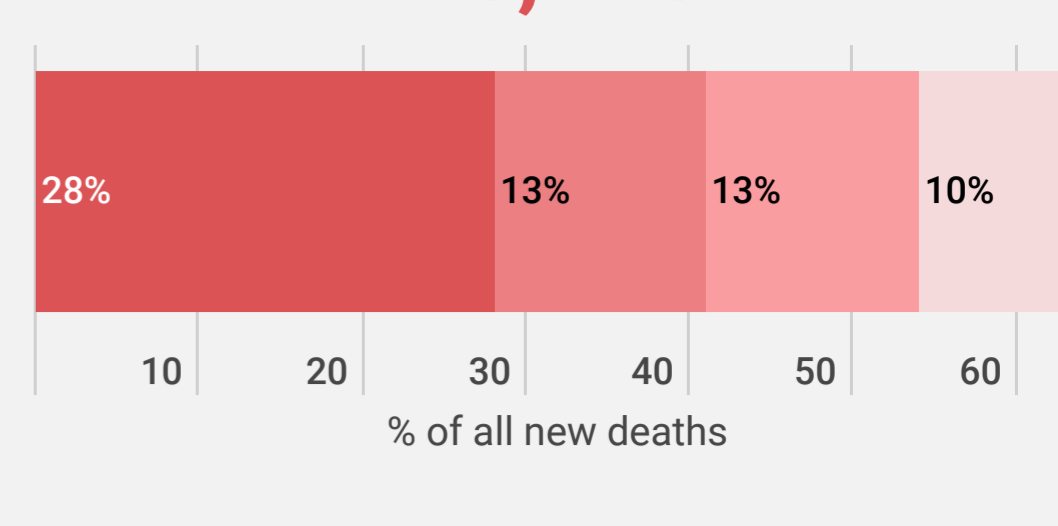
## New cases Epi week 20

163,035



## New deaths Epi week 20

10,410



**19%**  
of all people infected were health care workers

**97%**  
of all deaths had at least 1 underlying condition

**59%**  
of all deaths were in men

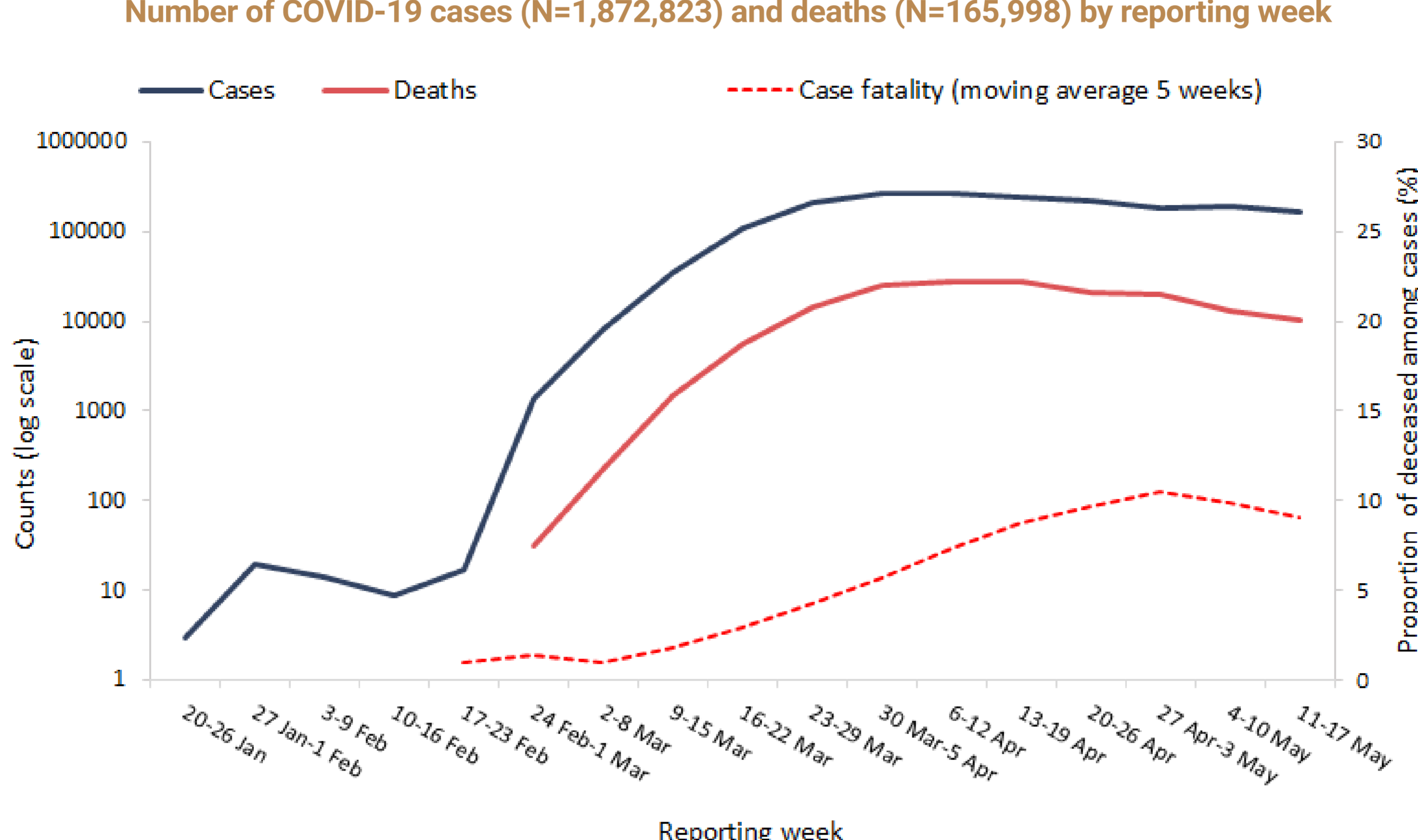
**79%**  
of all ICU admissions were people aged 50-79 years

**94%**  
of all deaths were in persons aged 60+

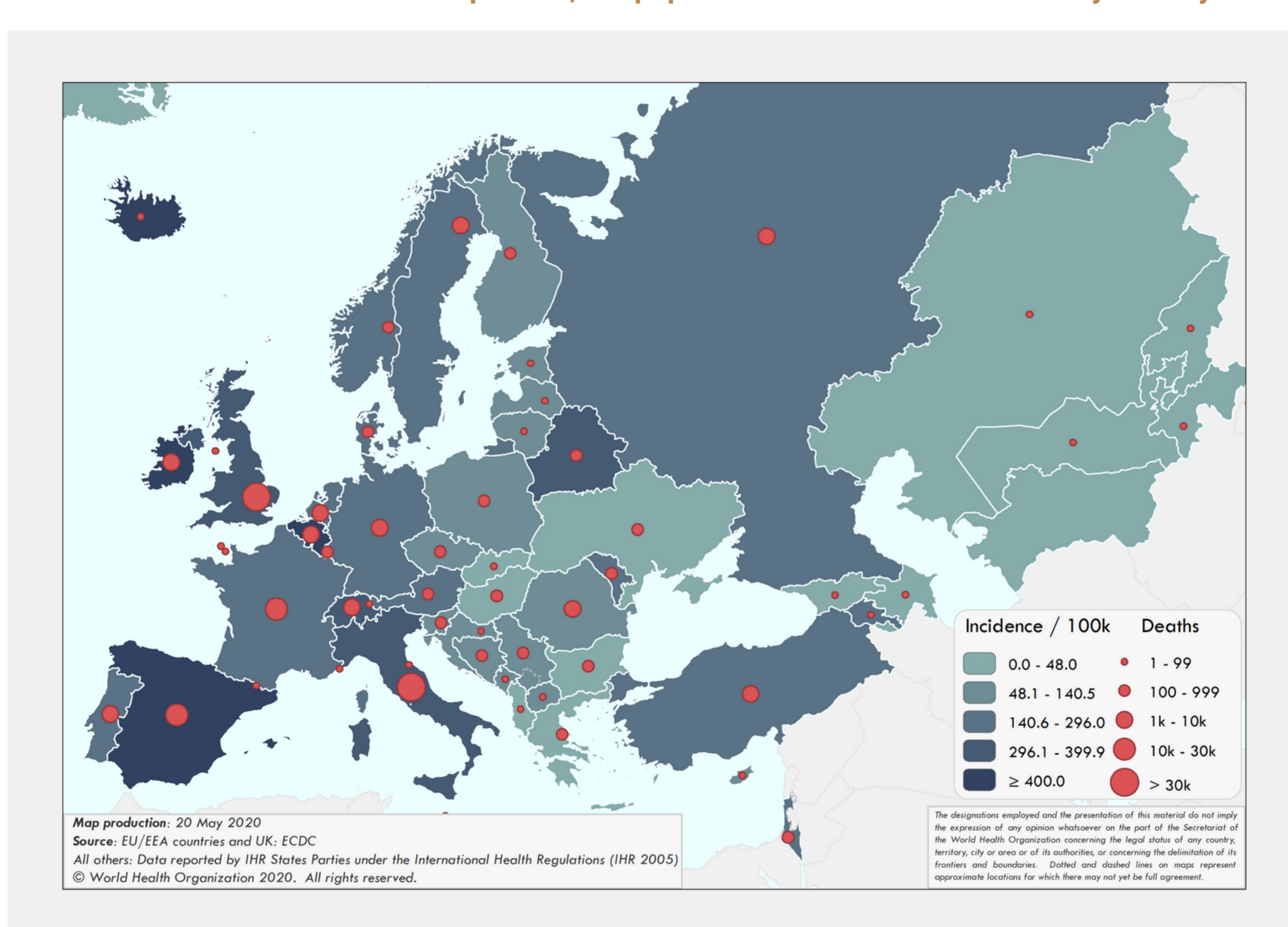
**66%**  
of all deaths had cardiovascular disease

For more detailed information see: [WHO Global situation reports](#) and [WHO Global situation dashboard](#)

## Number of COVID-19 cases (N=1,872,823) and deaths (N=165,998) by reporting week

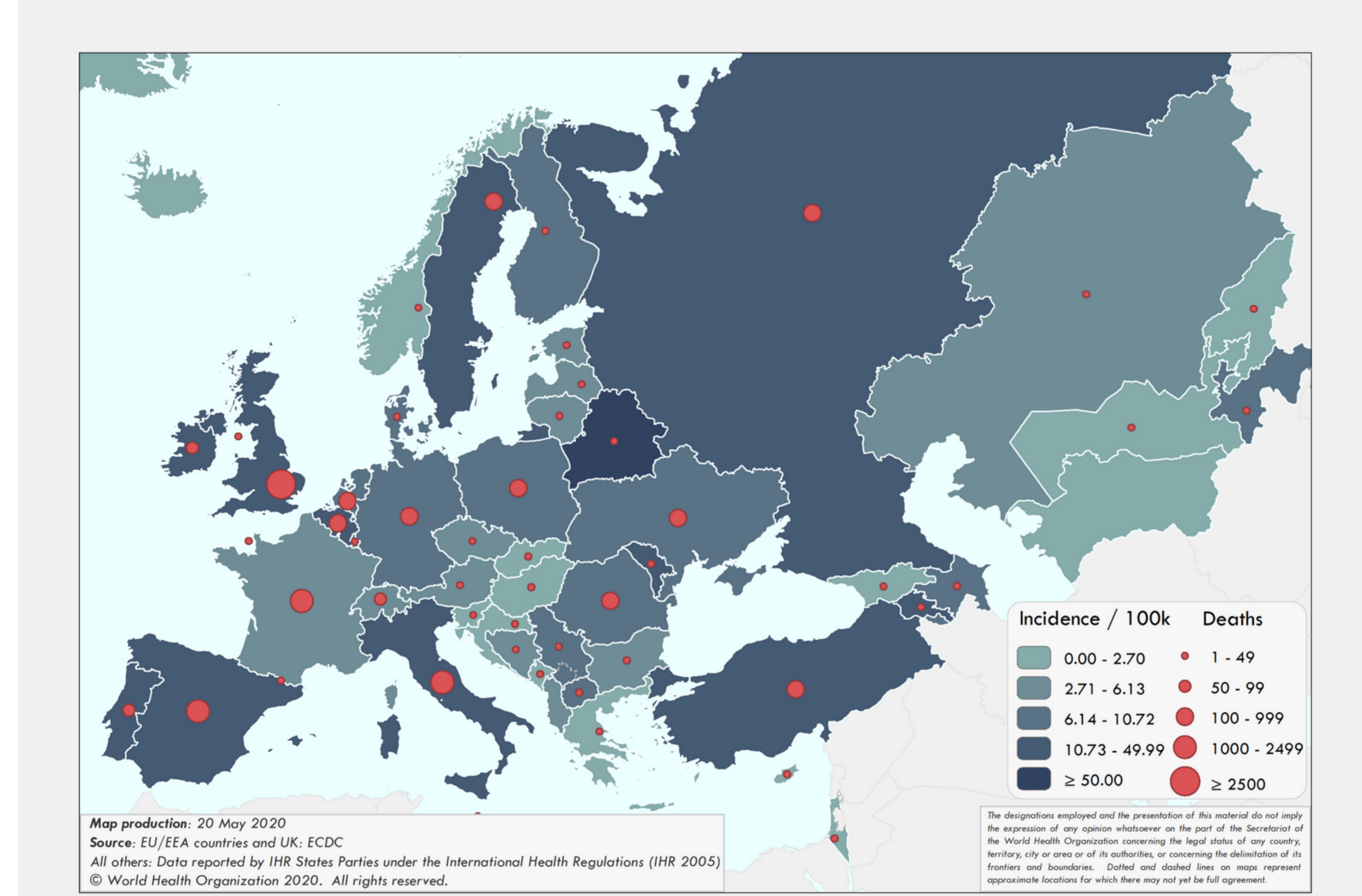


## COVID-19 cumulative incidence per 100,000 population and number of deaths by country



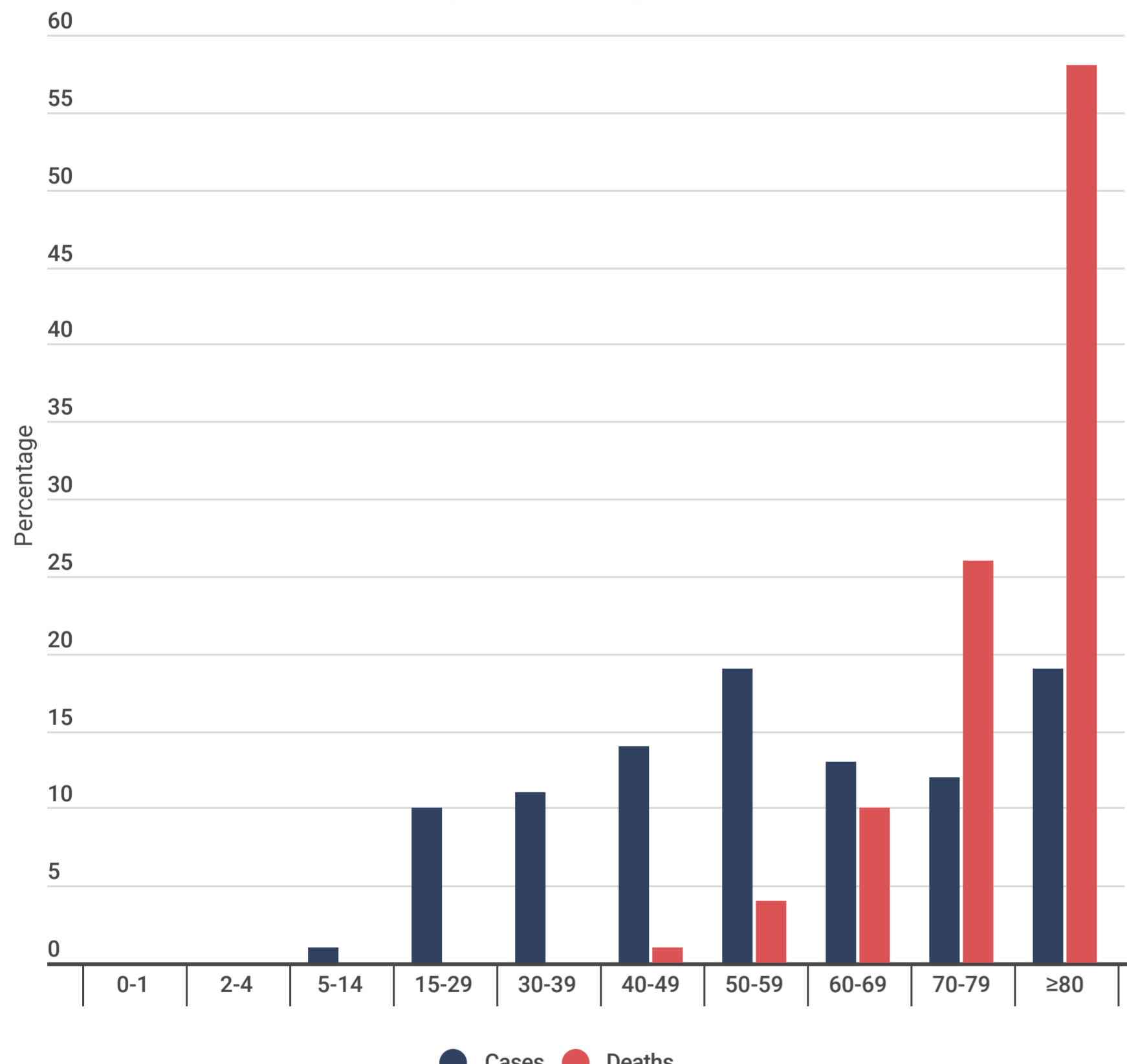
The designations employed and the presentation of the information in this Web site do not imply the expression of any opinion whatsoever on the part of the Secretariat of the World Health Organization concerning the legal status of any country, territory, city or area or of its authorities, or concerning the delimitation of its frontiers or boundaries.

## COVID-19 incidence per 100,000 population and number of deaths by country for week 20



The designations employed and the presentation of the information in this Web site do not imply the expression of any opinion whatsoever on the part of the Secretariat of the World Health Organization concerning the legal status of any country, territory, city or area or of its authorities, or concerning the delimitation of its frontiers or boundaries.

## Percentage of COVID-19 cases (N=759,591) and deaths (N=98,685) by age group

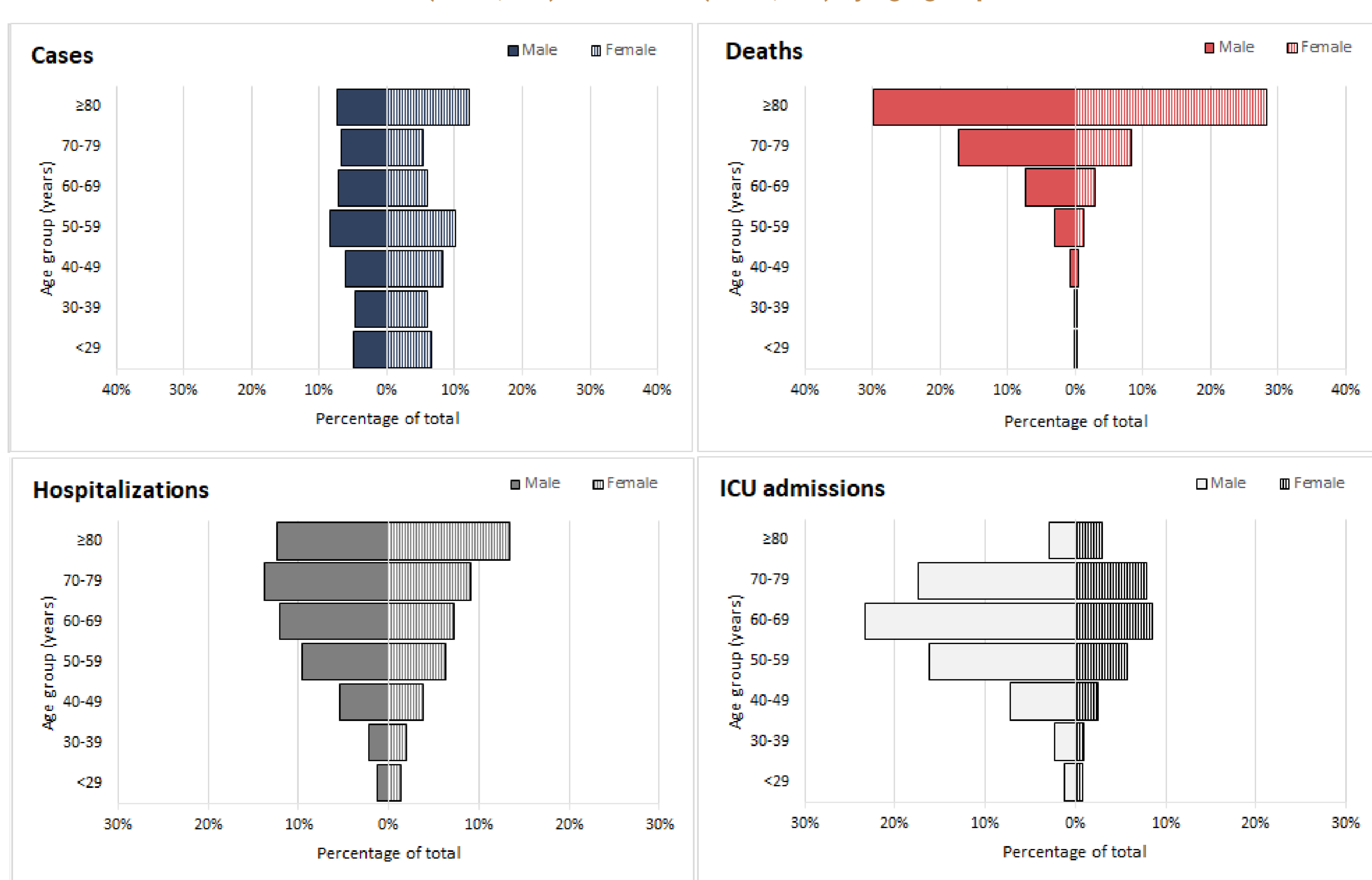


## Characteristics of COVID-19 cases and deaths

Characteristics	Total records with data available	
	n	%
<b>Cases</b>		
Age in years, median (range)*	55 (1-105)	526,722
Sex, male*	243,697	47
Travelled*	16,957	12
Recovered*	184,166	90
Health care workers*	83,084	19
Hospitalization*	127,278	30
Intensive care unit admissions*	9,607	3
<b>Deaths</b>		
Age in years, median (range)*	81 (0-108)	98,685
Sex, male*	57,862	59
At least one underlying condition*	26,125	97
cardiovascular disease	15,340	66
diabetes	7,546	34
lung disease	5,247	23
neurological disease / dementia	1,929	26
renal disease	1,367	20
malignancy	827	26
obesity	524	9
liver disease	320	5
immune disease	214	4
other	11,066	50

\*Case report forms (n=528,541);  
\*Case report forms and aggregated data from Italy (14/15 May) and Spain (14 May 2020) (n=792,555);  
Health care workers refer to occupation and not to the place of exposure  
\*Case report forms, mortality survey, aggregated data from Italy (14 May 2020) and Spain (14 May 2020) (n=98,698)

## Percentage of COVID-19 cases (N=755,244), hospitalizations (N=129,248), ICU admissions (N=11,910) and deaths (N=98,549) by age group and sex



## Percentage positive for COVID-19 in the ILI/ARI sentinel surveillance by reporting week

