

Best viewed using Chrome, Safari or Internet Explorer 9 or higher. If you are having trouble viewing this page please click here for the alternative viewer.

Key points

Week 36/2020 (31 Aug - 6 Sep 2020)

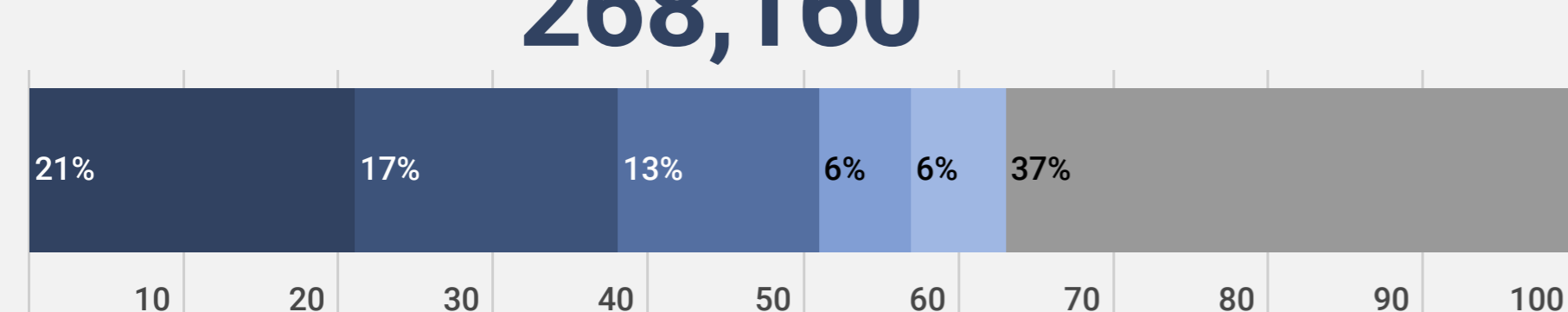
- The number of cases reported in the Region increased 10% to 268,160 in week 36/2020 compared to the previous week (243,613 cases in week 35/2020), and increased 118% compared with week 23/2020 (1-7 Jun; 123,099 cases) when the lowest number of cases per week were reported.
- Six countries in the Region in week 36/2020 increased 8% to 3,015 compared to the previous week (2,794 deaths in week 35/2020) (Figure 1)
- 63% (168,287) of the cases reported in week 36/2020 were reported from five countries: Spain (21%; 56,126), France (17%; 45,176), the Russian Federation (13%; 35,179), Ukraine (6%; 16,820) and Israel (6%; 14,986). The remaining cases (37%; 99,873) were reported by 52 countries and territories; each accounted for <5% of the total cases reported in week 36/2020
- Six countries had a crude incidence of ≥ 60 per 100,000 in week 36/2020: Andorra, France, Israel, Montenegro, Republic of Moldova and Spain.
- The crude incidence continues to vary across the region with a range from 2 per 100,000 population in Cyprus to 176 per 100,000 population in Israel (Figure 2A)
- The 14-day cumulative incidence increased by $\geq 10\%$ in week 36/2020 in 30 countries and territories in the Region, however for some countries data was retro-adjusted by national authorities: Andorra, Austria, Azerbaijan, Belarus, Croatia, Czech Republic, Estonia, Finland, France, Georgia, Gibraltar, Hungary, Ireland, Israel, Italy, Jersey, Latvia, Lithuania, Monaco, Montenegro, Norway, Portugal, Republic of Moldova, Slovakia, Slovenia, Spain, Switzerland, Turkey, Ukraine, and the United Kingdom (see [EURO COVID-19 Dashboard](#) for recent trends)
- 66% (2,001) of the deaths reported in week 36/2020 were reported by the Russian Federation (24%; 727), Turkey (11%; 336), Ukraine (11%; 319), Romania (10%; 311) and Spain (10%; 308). The remaining deaths (34%; 1,014) were reported from 36 countries and territories; each accounted for <5% of the total deaths reported in week 36/2020
- The proportion of reported cases that died was 1.1% in week 36/2020
- Community-transmission was reported by 30 countries and territories, 23 countries and territories reported cluster transmission, while 5 countries and territories reported sporadic transmission in week 36/2020 (see [EURO COVID-19 Dashboard](#))
- For a subnational view of the COVID-19 situation in the WHO-EURO Region see the [WHO-EURO COVID-19 Subnational Explorer](#)

Summary overview

- The cumulative cases across the Region increased 6.3% to 4,518,827 cases in week 36/2020 (from 4,250,667 cases in week 35/2020) and cumulative deaths increased by 1.4% to 222,639 deaths (from 219,624 deaths in week 35/2020)
- As of 21 August 2020, ten countries in the Region had an effective reproductive number significantly over 1: Azerbaijan, Belarus, Czech Republic, France, Hungary, Italy, Israel, Monaco, Portugal and Slovakia (See [EpiForecasts and the CMMID COVID working group COVID-19 Global Summary](#) for latest estimates)
- Six countries in the Region each reported a cumulative incidence of ≥ 1000 cases per 100,000 population: (Figure 2B)
- As of week 36/2020, 68% (3,012,777) of cumulative cases were reported from the Russian Federation (23%; 1,025,505), Spain (12%; 520,851), the United Kingdom (8%;344,164), France (7%; 317,706), Turkey (6%; 278,228), Italy (6%; 276,338) and Germany (6%; 249,985). The remaining cases (32%; 1,506,050) were reported by 54 countries and territories; each accounted for <5% of the total cases reported until week 36/2020
- As of week 36/2020, 70% of cumulative deaths (155,128) were reported from the United Kingdom (19%; 41,549), Italy (16%; 35,534), France (14%; 30,698), Spain (13%; 29,527) and the Russian Federation (8%; 17,820). The remaining deaths (30%; 67,511) were reported by 52 countries and territories; each accounted for <5% of the total cases reported until week 36/2020
- 88% of all deaths with information available were in persons aged ≥ 65 years and 58% of all deaths were in men (Table 1)
- 96% of all deaths with information available had at least one underlying condition, with cardiovascular disease the leading comorbidity (75%) (Table 1)
- 14% of cases were in persons aged ≥ 65 years in week 36/2020, a decrease from 38% in week 14/2020, while the percentage of fatal cases aged ≥ 65 years was 64% in week 36/2020 (compared to 91% in week 14/2020) (Figure 3)
- Pooled estimates of all-cause mortality for 22 countries in the EuroMOMO network show normal levels of excess mortality for the participating countries, however in some countries there seems to be a small excess mortality
- In week 36/2020, four countries reported a total of 321 tests, while only one country reported detections (n=13) of SARS-CoV-2 (North Macedonia) in persons with influenza-like illness (ILI) in primary care sentinel surveillance. The overall positivity was 4% in week 36/2020 (Figure 4)
- Overall, there were 129,133 (6.3%) COVID-19 cases among the total of 2,050,835 tests reported to have been performed in 21 countries in week 36/2020 (Figure 5)

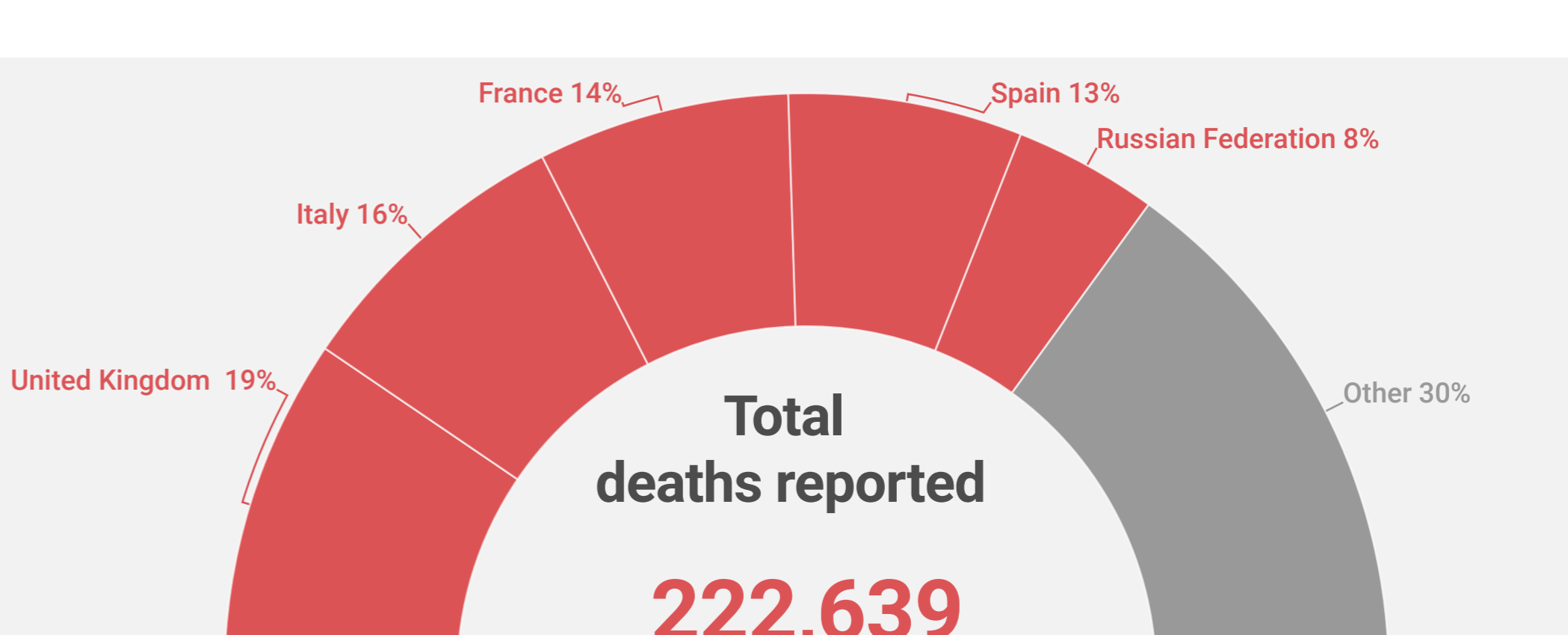
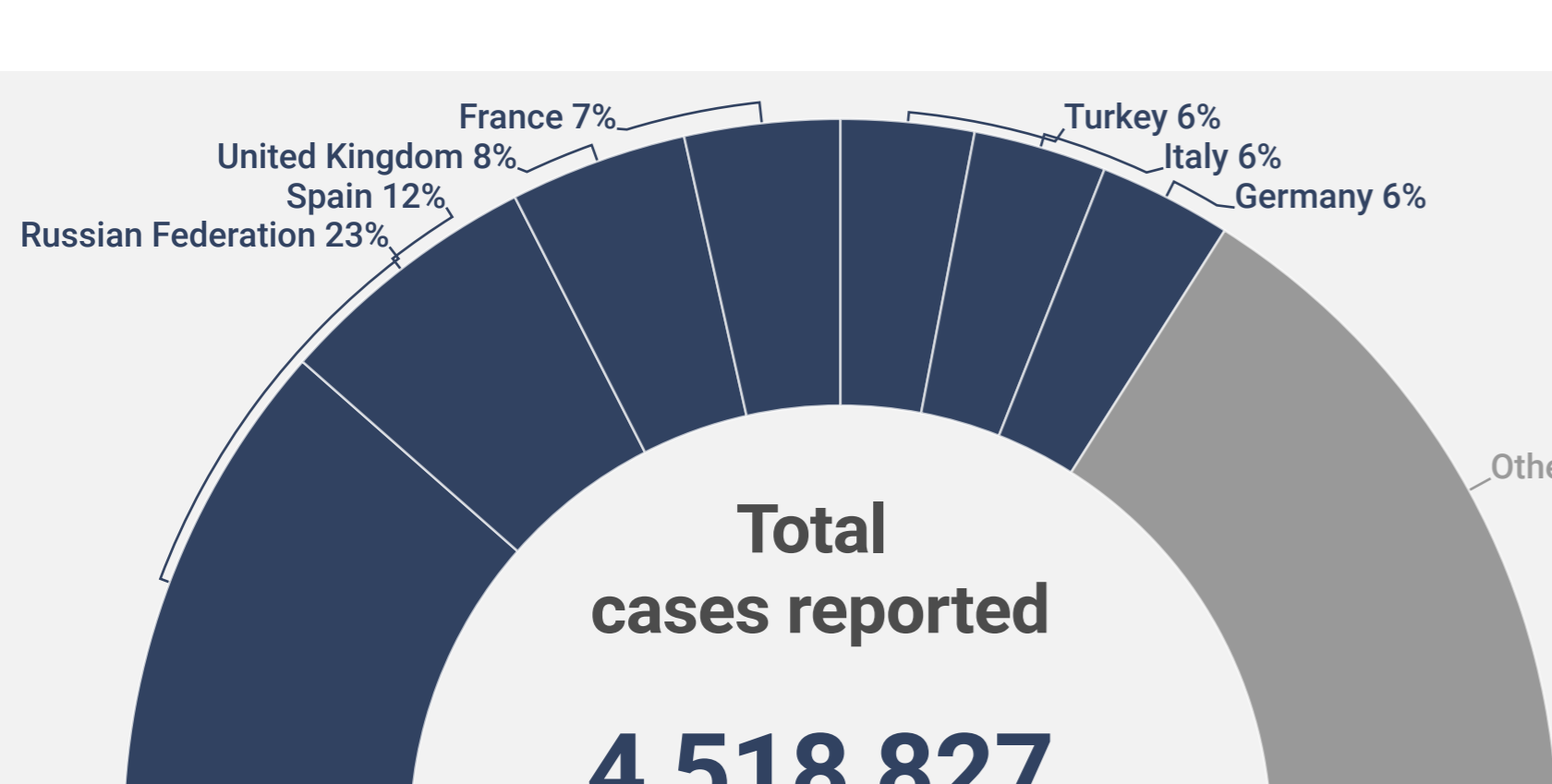
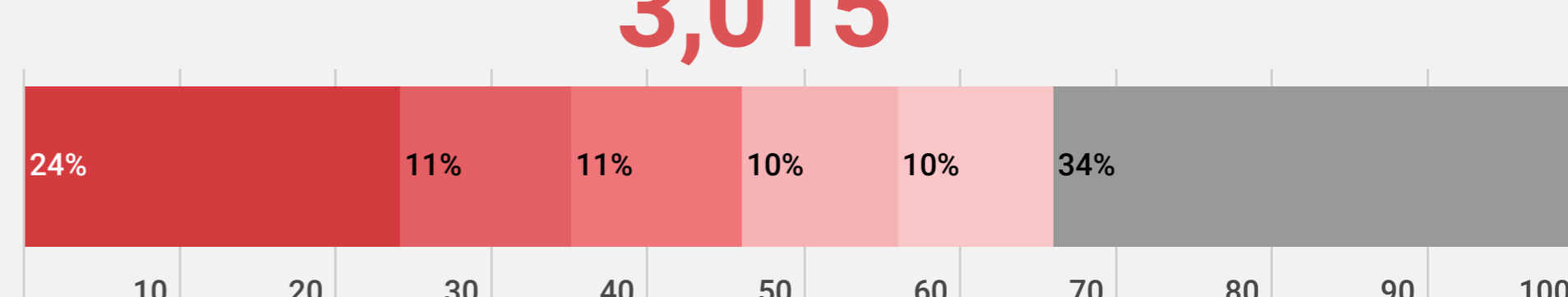
New cases (week 36/2020)

268,160



New deaths (week 36/2020)

3,015



Note: Reported cases and/or deaths from IHR States Parties may be subject to retrospective adjustments.

88% of deaths were in persons aged ≥ 65

58% of deaths were in men

96% of deaths had at least 1 underlying condition

75% of deaths had cardiovascular disease

For more detailed information see: [WHO Global situation reports](#) [WHO Global situation dashboard](#)

Figure 1: Number of COVID-19 cases (N=4,518,827) and deaths (N=222,639) by reporting week

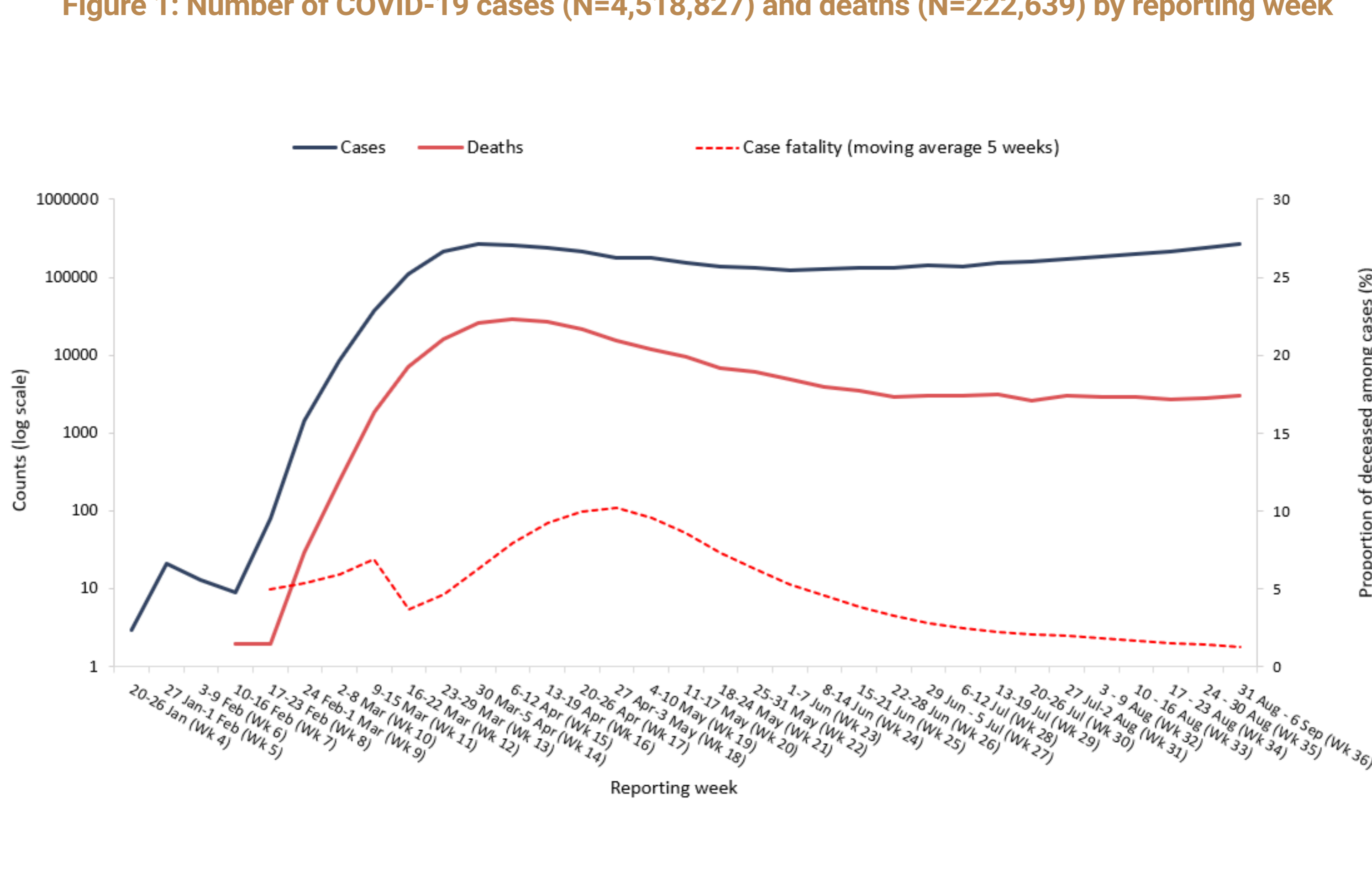
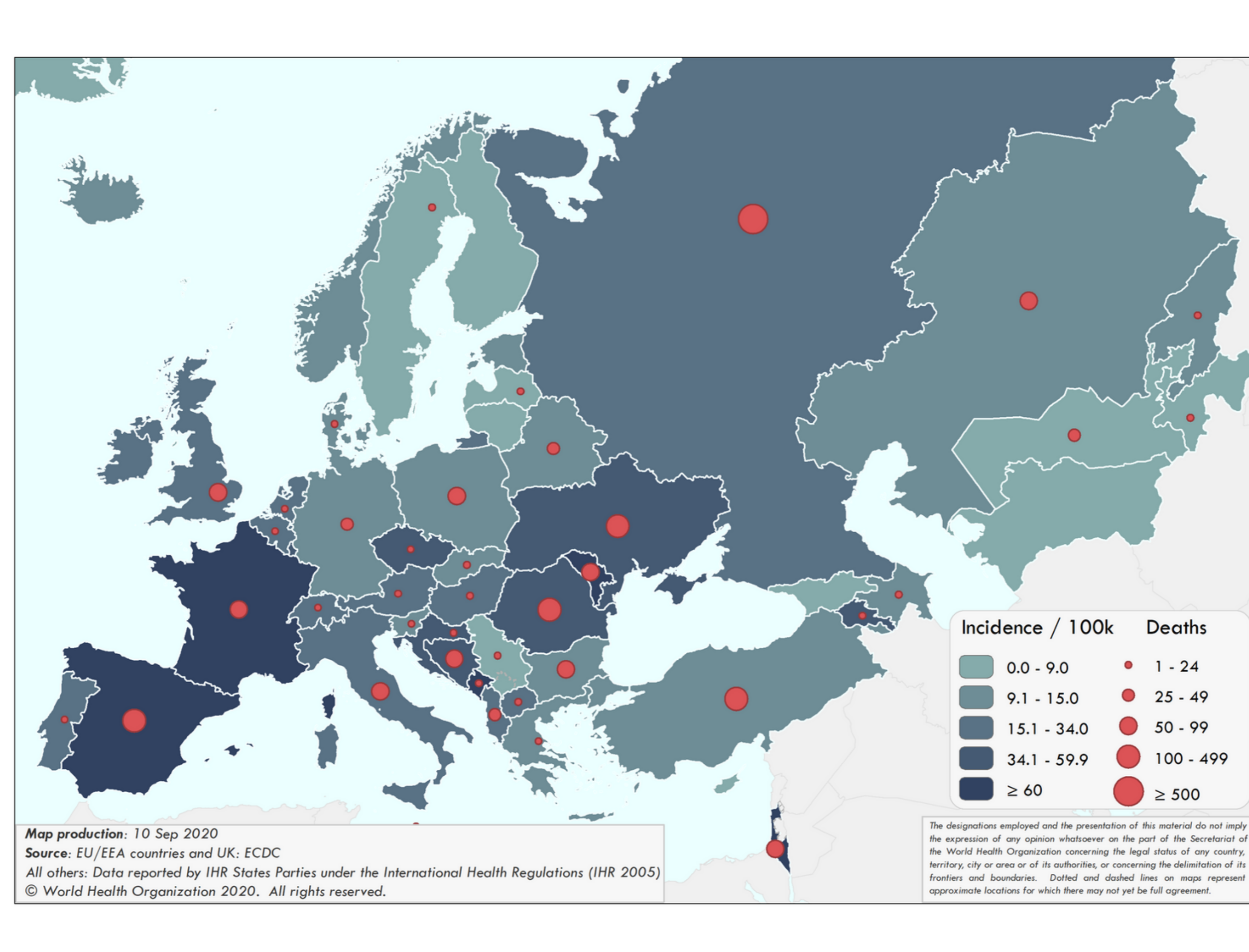
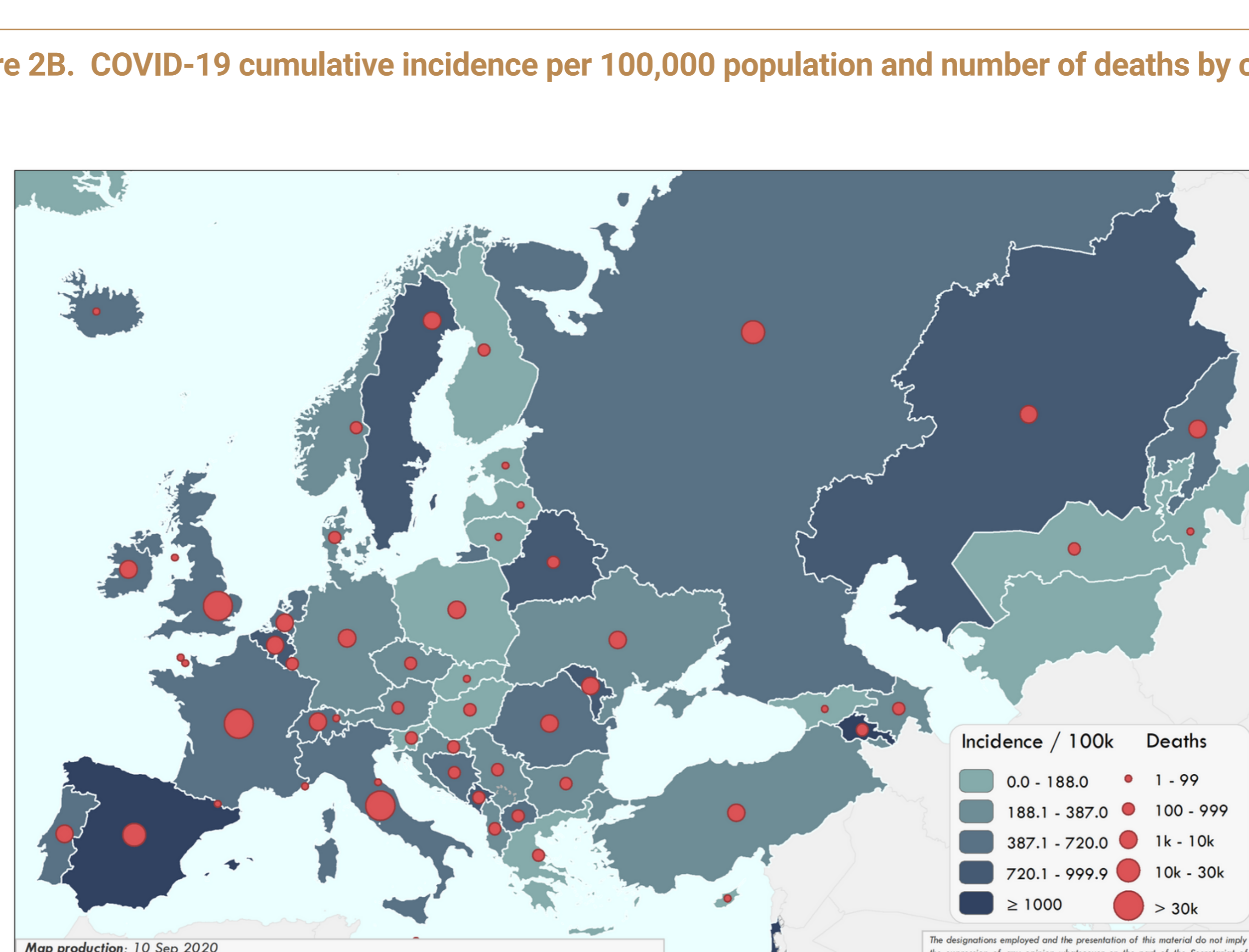


Figure 2A. COVID-19 incidence per 100,000 population and number of deaths by country for week 36



The designations employed and the presentation of the information in this Web site do not imply the expression of any opinion whatsoever on the part of the Secretariat of the World Health Organization concerning the legal status of any country, territory, city or area or of its authorities, or concerning the delimitation of its frontiers or boundaries.

Figure 2B. COVID-19 cumulative incidence per 100,000 population and number of deaths by country



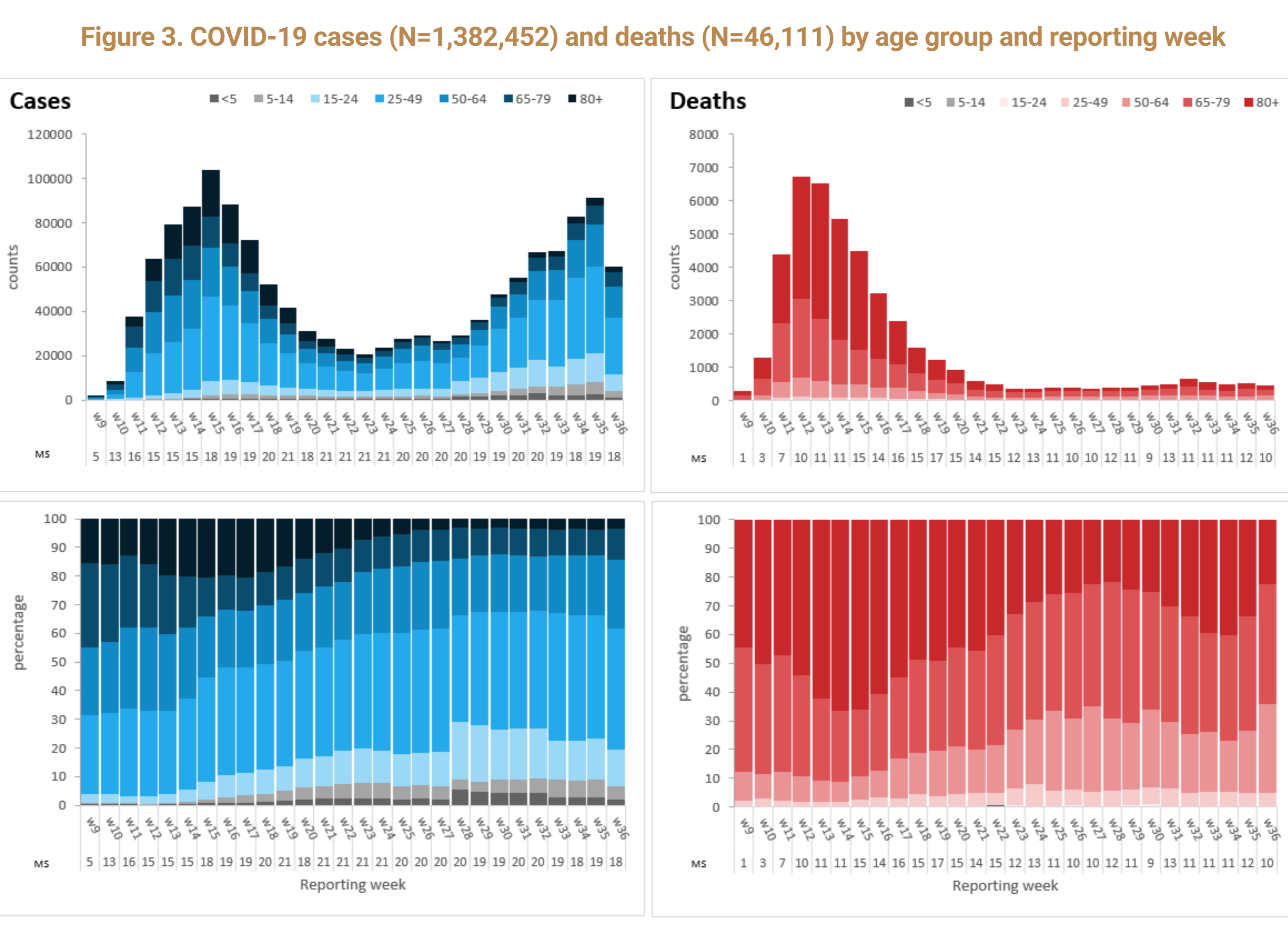
The designations employed and the presentation of the information in this Web site do not imply the expression of any opinion whatsoever on the part of the Secretariat of the World Health Organization concerning the legal status of any country, territory, city or area or of its authorities, or concerning the delimitation of its frontiers or boundaries.

Table 1. Characteristics of COVID-19 deaths

| Characteristics | n | % | Total records with data available |
|-----------------------------------|------------|----|-----------------------------------|
| Age in years, median (range) | 81 (0-108) | | 107,435 |
| Sex, male | 60,105 | 58 | 104,491 |
| At least one underlying condition | 41,573 | 96 | 43,246 |
| • cardiovascular disease | 8,385 | 75 | 11,105 |
| • diabetes | 2,612 | 40 | 5,618 |
| • lung disease | 1,395 | 27 | 6,673 |
| • neurological disease / dementia | 1,836 | 24 | 9,017 |
| • renal disease | 867 | 24 | 3,636 |
| • obesity | 547 | 11 | 4,990 |
| • liver disease | 574 | 6 | 8,673 |
| • immune disease | 278 | 2 | 5,194 |
| • other | 1,219 | 21 | 5,838 |

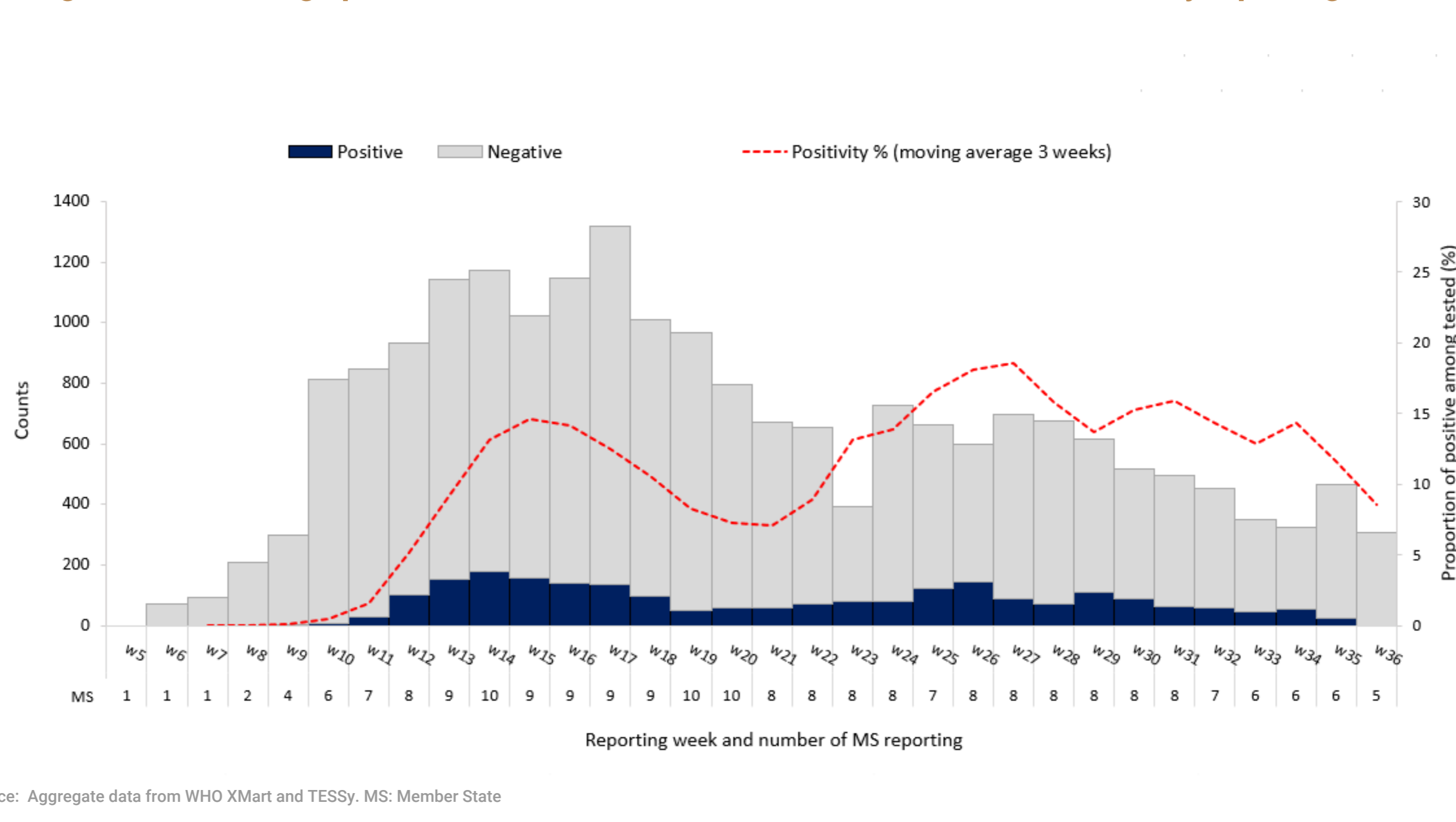
Source: Mortality database (n=107,475)

Figure 3. COVID-19 cases (N=1,382,452) and deaths (N=46,111) by age group and reporting week



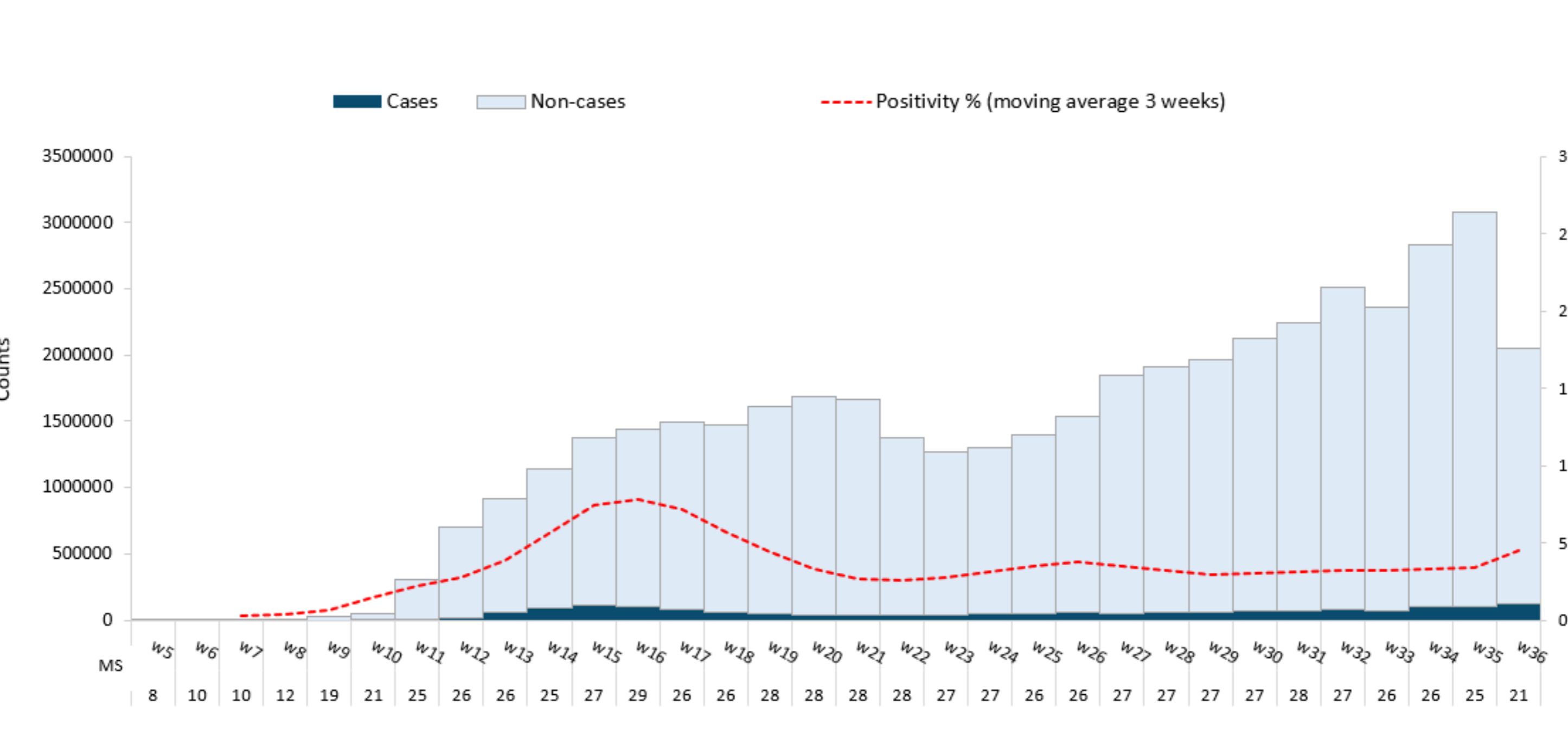
Source: Aggregate data from TESSy. MS: Member State

Figure 4. Percentage positive for COVID-19 in the ILI/ARI sentinel surveillance by reporting week



Source: Aggregate data from WHO XMart and TESSy. MS: Member State

Figure 5. Percentage positive for COVID-19 among all tested by reporting week



Source: Aggregate data from WHO XMart and TESSy. Note: Member States that report cases only (no testing data) are not included. MS: Member State