

Best viewed using Chrome, Safari or Internet Explorer 9 or higher. If you are having trouble viewing this page please click here for the alternative viewer.

Key points

Week 39/2020 (21 - 27 Sept 2020)

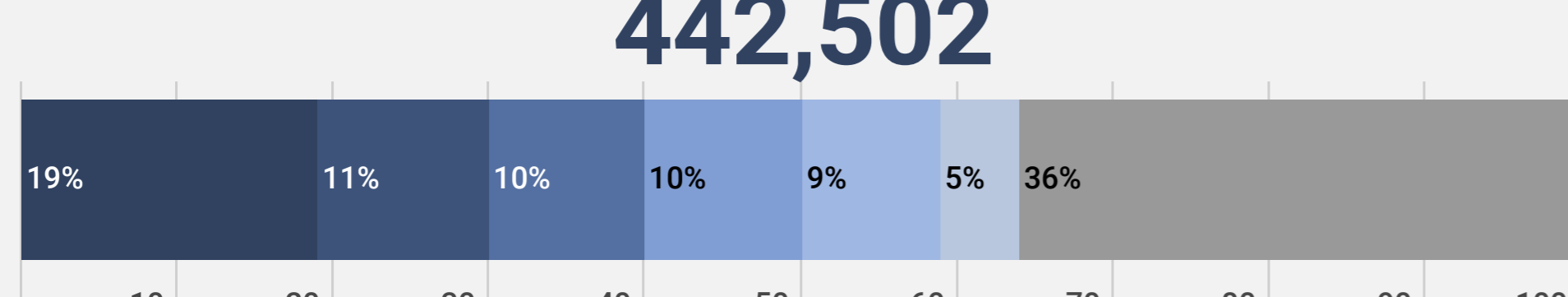
- The number of cases reported in the Region increased 11% to 442,502 in week 39/2020 compared to the previous week (400,201 cases in week 38/2020) and have now exceeded (by 67%) those reported when the pandemic first peaked in Europe in week 14/2020 (30 Mar - 5 Apr; 265,081)
- 64% (284,339) of the cases reported in week 39/2020 were reported from six countries: France (19%; 85,252), Russian Federation (11%; 48,039), Spain (10%; 45,123), Israel (10%; 44,050), United Kingdom (9%; 38,919) and Ukraine (5%; 22,956). The remaining cases (36%; 158,163) were reported by 53 countries and territories; each accounted for <5% of the total cases reported in week 39/2020
- The crude incidence continues to vary across the region with a range from 3.2 per 100,000 population in Tajikistan to 517 per 100,000 population in Israel in week 39/2020
- Six countries had a crude incidence of ≥ 100 per 100,000 in week 39/2020: Israel (517), Andorra (353), Czech Republic (140), France (131) and Republic of Moldova (104) (Figure 2A)
- The 14-day cumulative incidence increased by $\geq 10\%$ in week 39/2020 in 46 countries and territories in the Region; an increase of $\geq 50\%$ was observed in 30 of these countries and territories: Andorra, Armenia, Austria, Belgium, Cyprus, Czech Republic, Denmark, Estonia, Faroe Islands, Finland, France, Georgia, Guernsey, Hungary, Iceland, Ireland, Isle of Man, Jersey, Latvia, Liechtenstein, Lithuania, Luxembourg, Malta, Netherlands, Poland, Portugal, Slovakia, Slovenia, Sweden, and the United Kingdom (see [EURO COVID-19 Dashboard](#) for recent trends)
- The number of deaths in the Region in week 39/2020 increased 11% to 4,657 compared to the previous week (4,187 deaths in week 38/2020) (Figure 1). The proportion of reported cases that died was 1.0% in week 39/2020
- 70% (3,254) of the deaths reported in week 39/2020 were reported by the Russian Federation (19%; 906), Spain (12%; 539), Turkey (10%; 484), France (9%; 426), Ukraine (9%; 402), Romania (6%; 285) and the United Kingdom (5%; 212). The remaining deaths (30%; 1,403) were reported from 37 countries and territories; each accounted for <5% of the total deaths reported in week 39/2020
- Community-transmission was reported by 31 countries and territories, 23 countries and territories reported cluster transmission, while 4 countries and territories reported sporadic transmission in week 39/2020
- For an interactive subnational view of the recent COVID-19 situation in the WHO-EURO Region see the [WHO-EURO COVID19 Subnational Explorer](#)

Summary overview

- The cumulative cases across the Region increased 8.4% to 5,709,134 cases in week 39/2020 (from 5,266,632 cases in week 38/2020) and cumulative deaths increased by 2.0% to 235,010 deaths (from 230,353 deaths in week 38/2020)
- As of 14 September 2020, 18 countries in the Region had an effective reproductive number significantly over 1: Belgium, Czech Republic, Cyprus, Estonia, Finland, Georgia, Greece, Iceland, Ireland, Israel, Lithuania, Montenegro, Netherlands, Poland, Slovakia, Slovenia, Sweden and United Kingdom (See [EpiForecasts](#) and the [CMMID COVID working group COVID-19 Global Summary](#) for latest estimates)
- Nine countries in the Region each reported a cumulative incidence of ≥ 1200 cases per 100,000 population: Israel (2727), Andorra (2380), San Marino (2203), Armenia (1670), Montenegro (1645), Spain (1533), Holy See (1472), Luxembourg (1350) and Republic of Moldova (1250) (Figure 2B)
- As of week 39/2020, 65% (3,729,852) of cumulative cases were reported from the Russian Federation (20%; 1,151,438), Spain (13%; 716,481), France (9%; 527,446), the United Kingdom (8%; 429,277), Turkey (5%; 312,966), Italy (5%; 308,104) and Germany (5%; 284,140). The remaining cases (35%; 1,979,282) were reported by 54 countries and territories; each accounted for <5% of the total cases reported until week 39/2020
- As of week 39/2020, 69% of cumulative deaths (161,045) were reported from the United Kingdom (18%; 41,971), Italy (15%; 35,818), France (13%; 31,700), Spain (13%; 31,232) and the Russian Federation (9%; 20,324). The remaining deaths (31%; 73,965) were reported by 52 countries and territories; each accounted for <5% of the total cases reported until week 39/2020
- 14.4% of cases were in persons aged ≥ 65 years in week 39/2020, a decrease from 38% in week 14/2020, while the percentage of fatal cases aged ≥ 65 years was 68% in week 39/2020 (compared to 91% in week 14/2020) (Figure 3)
- 88% of all deaths with information available were in persons aged ≥ 65 years and 57% of all deaths were in men (Table 1). 95% of all deaths with information available had at least one underlying condition, with cardiovascular disease the leading comorbidity (76%) (Table 1)
- Pooled estimates of all-cause mortality for 24 countries in the EuroMOMO network show normal levels for the participating countries. However, excess mortality is observable in the age group 75 to 84 years and overall in a few countries.
- In week 39/2020, six countries reported a total of 235 tests and 2 detections of SARS-CoV-2 in persons with influenza-like illness (ILI) in primary care sentinel surveillance (Figure 4)
- Overall, there were 176,199 (8.3%) COVID-19 cases among the total of 2,120,249 tests reported to have been performed in 18 countries in week 39/2020 (Figure 5)

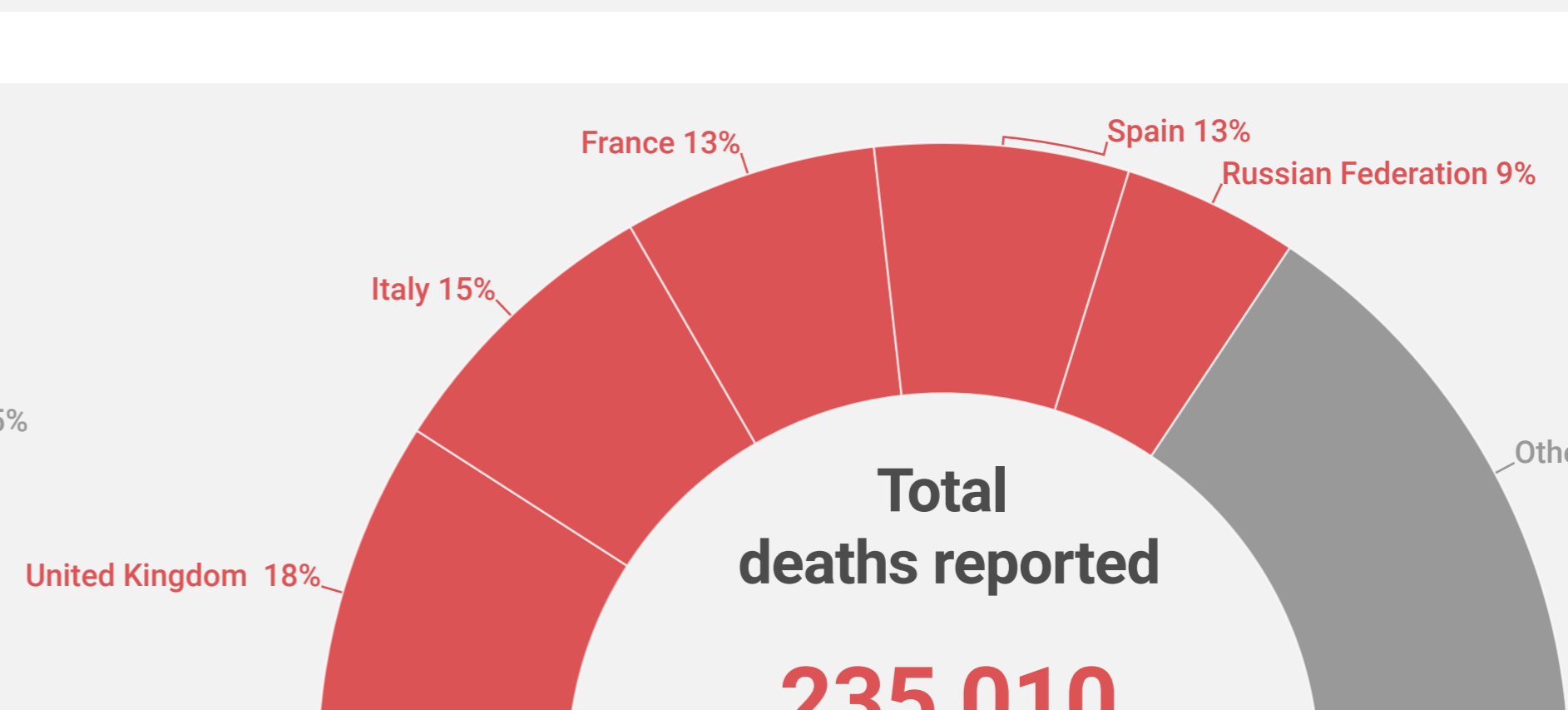
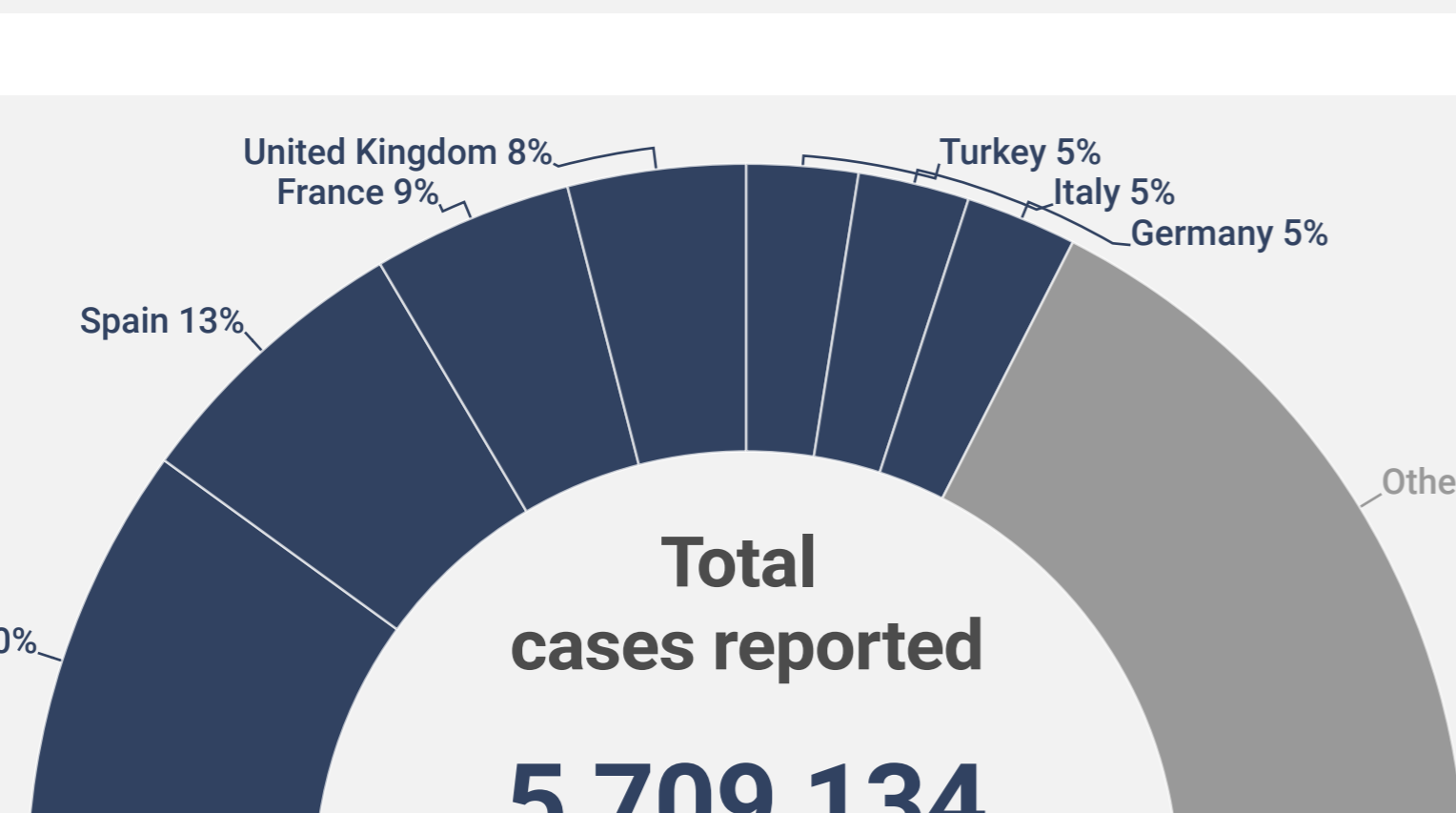
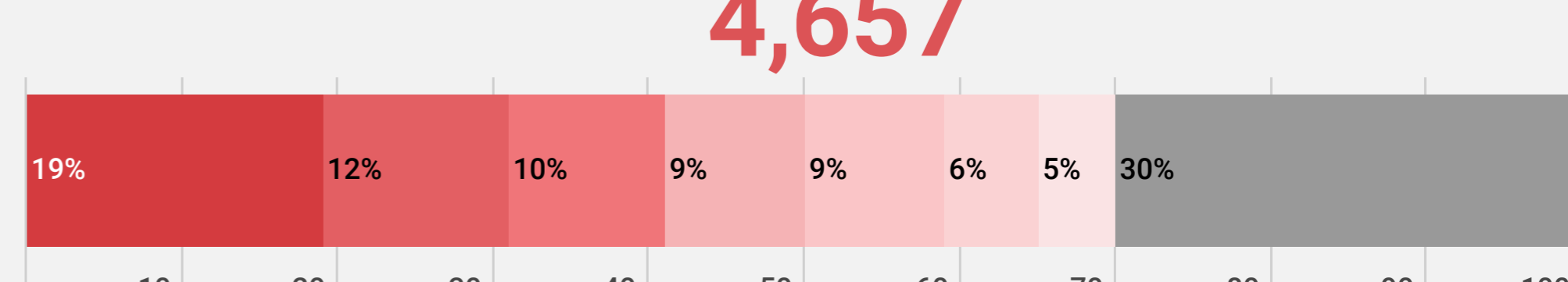
New cases (week 39/2020)

442,502



New deaths (week 39/2020)

4,657



Note: Reported cases and/or deaths from IHR States Parties may be subject to retrospective adjustments. Data as of 30 September 2020

88%
of all deaths
were in persons aged ≥ 65

57%
of all deaths
were in men

95%
of all deaths
had at least 1 underlying
condition

76%
of all deaths
had cardiovascular disease

For more detailed information see: [WHO Global situation reports](#) [WHO Global situation dashboard](#)

Figure 1: Number of COVID-19 cases (N=5,709,134) and deaths (N=235,010) by reporting week

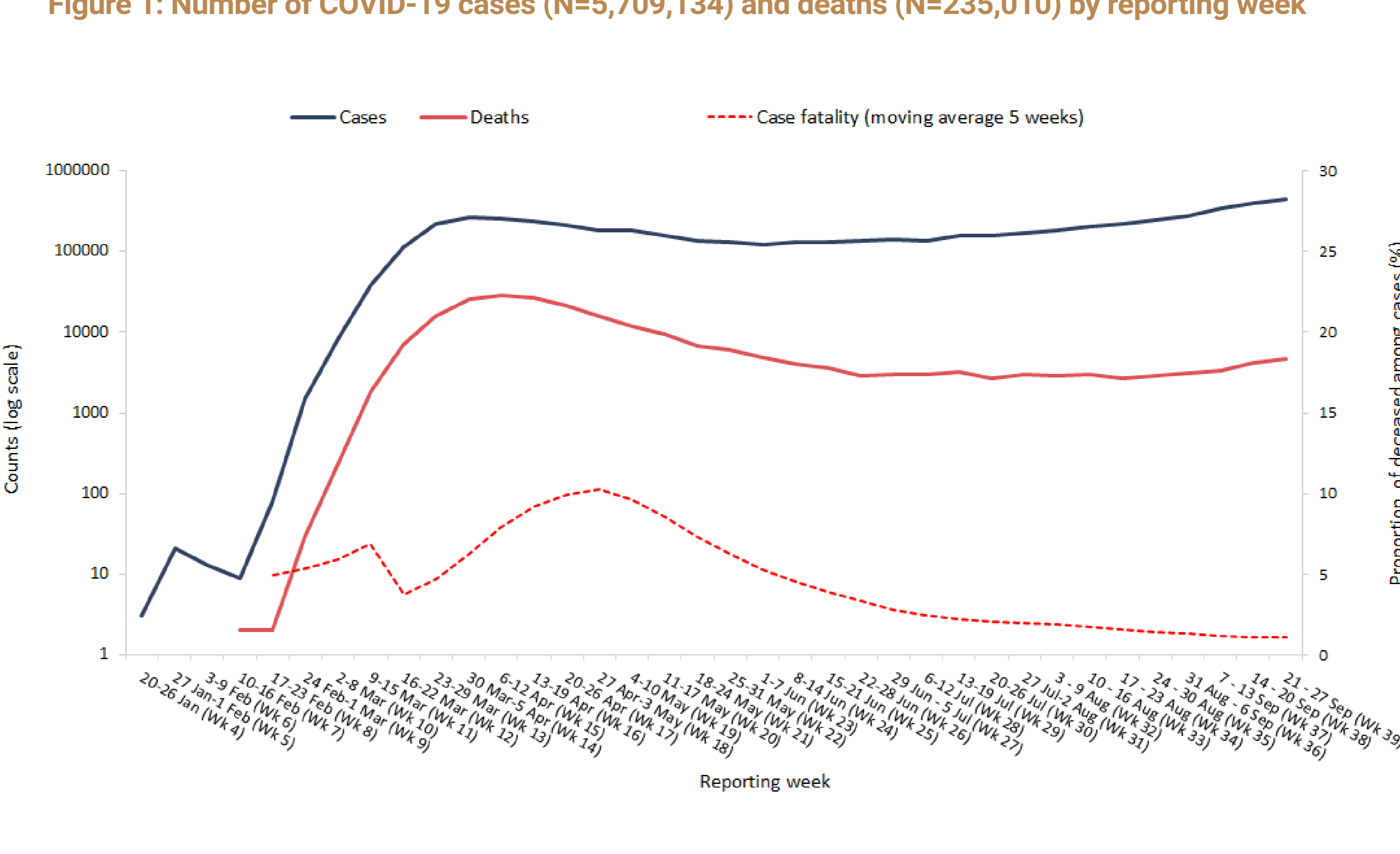


Figure 2A. COVID-19 incidence per 100,000 population and number of deaths by country for week 39

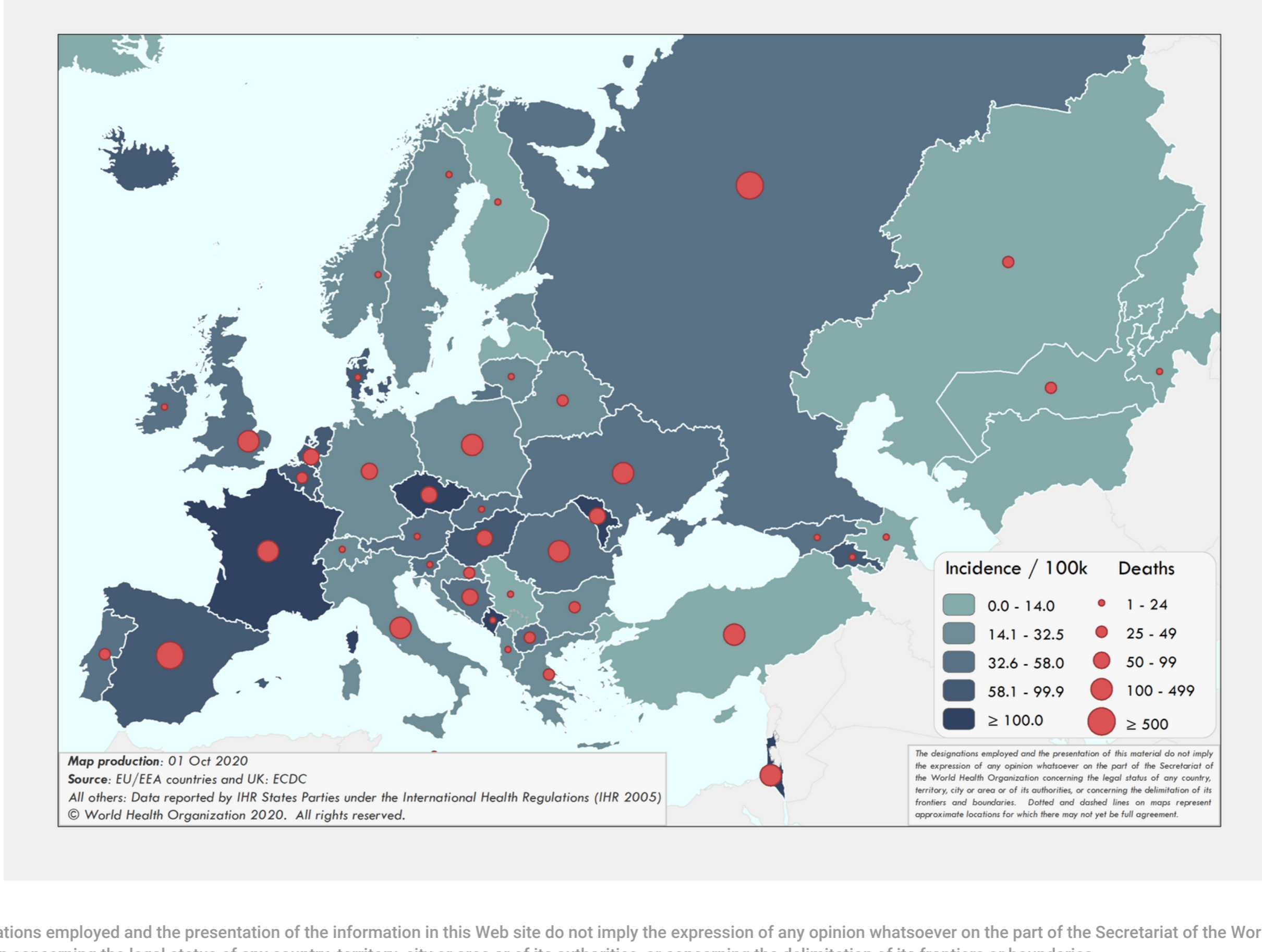


Figure 2B. COVID-19 cumulative incidence per 100,000 population and number of deaths by country

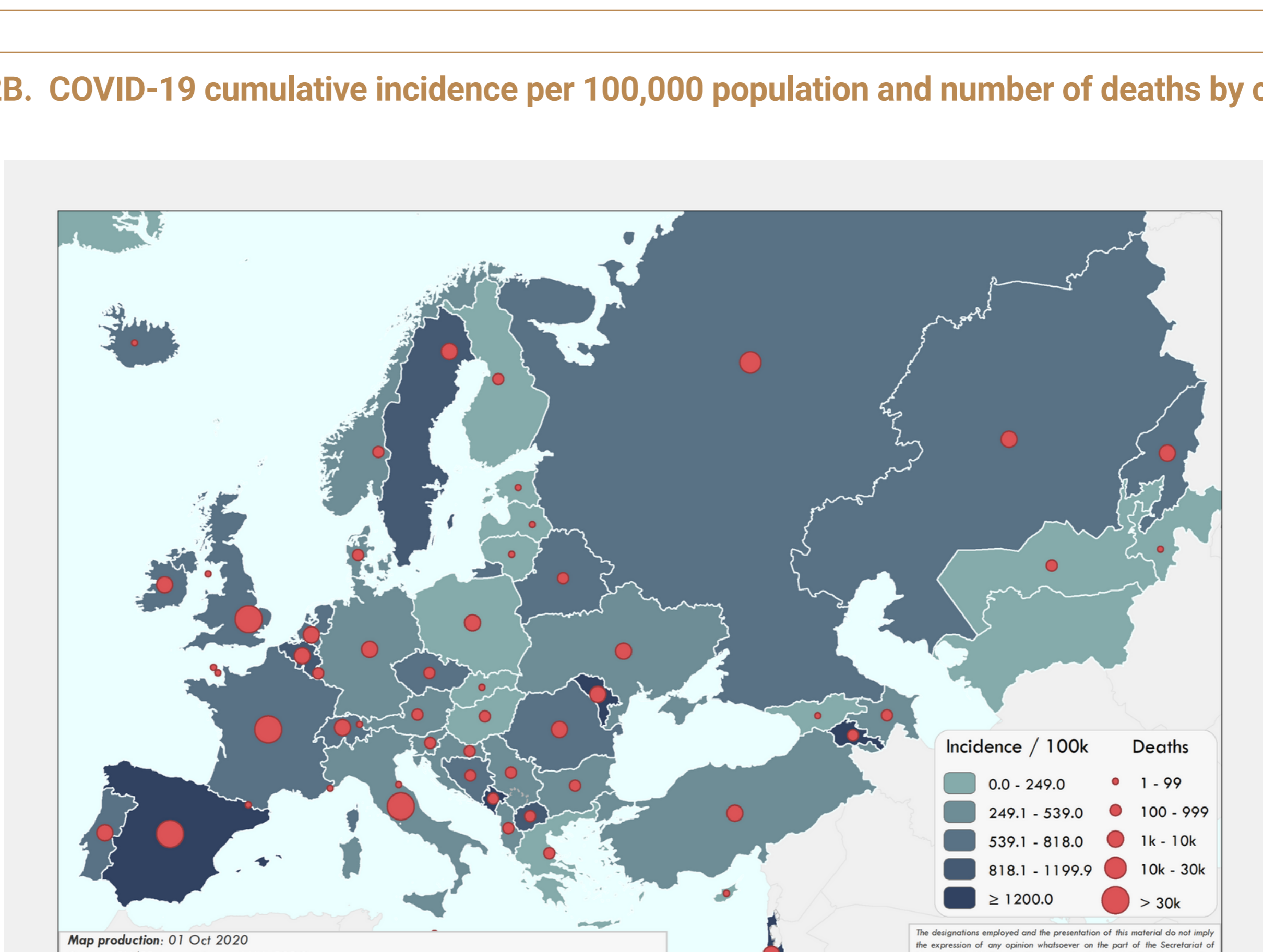
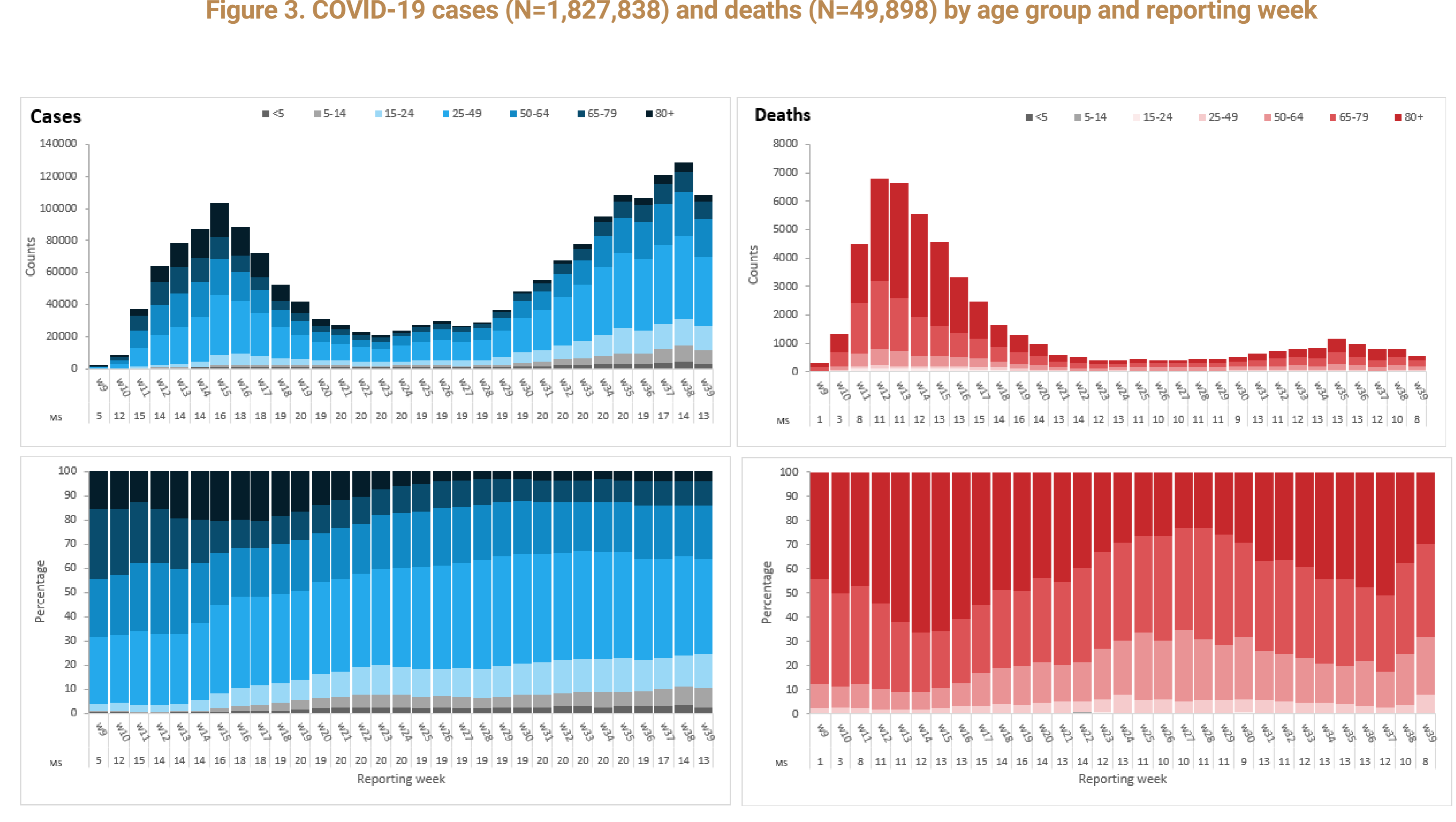


Table 1. Characteristics of COVID-19 deaths

Characteristics	n	%	Total records with data available
Age in years, median (range)	81 (0-108)		109,947
Sex, male	62,134	57	108,277
At least one underlying condition	43,307	95	45,825
• cardiovascular disease	9,596	76	12,672
• diabetes	2,676	47	5,740
• lung disease	1,535	19	8,072
• neurological disease / dementia	1,943	19	10,494
• renal disease	889	24	3,724
• obesity	649	10	6,358
• liver disease	636	6	10,133
• immune disease	289	4	6,579
• other	1,403	19	7,204

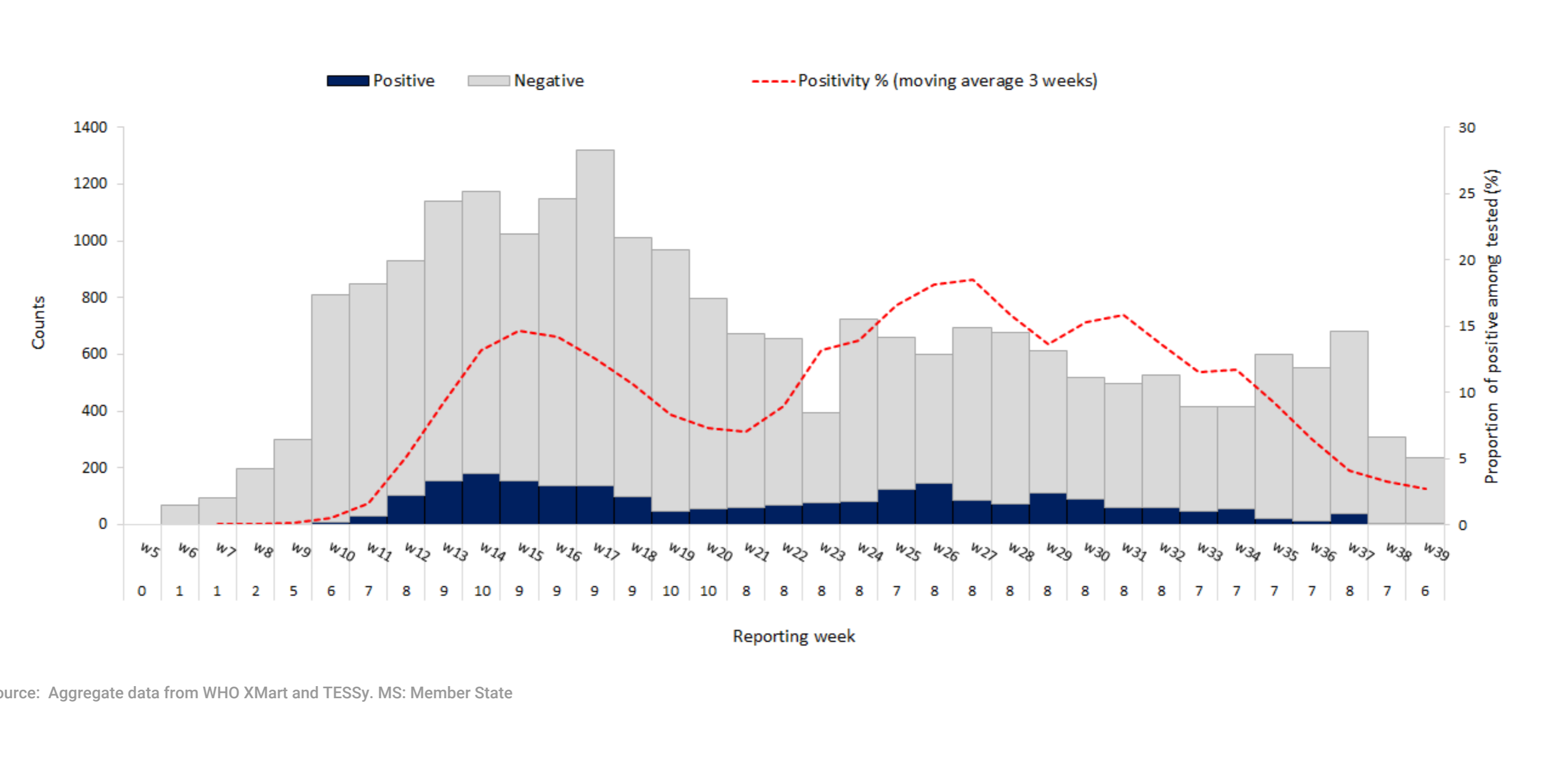
Source: Mortality database (n=109,947)

Figure 3. COVID-19 cases (N=1,827,838) and deaths (N=49,898) by age group and reporting week



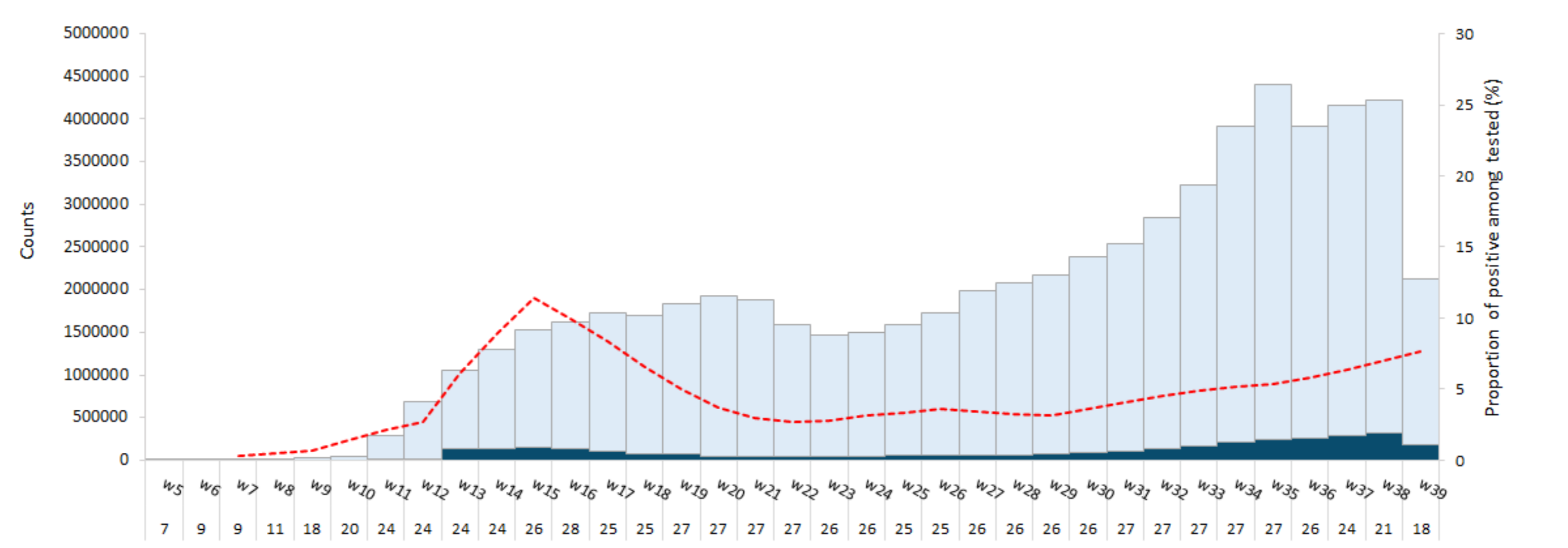
Source: Aggregate data from TESSy, MS: Member State

Figure 4. Percentage positive for COVID-19 in the ILI/ARI sentinel surveillance by reporting week



Source: Aggregate data from WHO XMart and TESSy, MS: Member State

Figure 5. Percentage positive for COVID-19 among all tested by reporting week



Source: Aggregate data from WHO XMart and TESSy. Note: Member States that report cases only (no testing data) are not included. MS: Member State