



**INSTITUTIONAL FRAMEWORK**

Lead agency	Ministry of transport of the Slovak Republic
Funded in national budget	Yes
National road safety strategy	Yes
Funding to implement strategy	Partially funded
Fatality reduction target	50% (2011-2020)

**SAFER ROADS AND MOBILITY**

Audits or star rating required for new road infrastructure	Partial
Design standards for the safety of pedestrians / cyclists	Yes
Inspections / star rating of existing roads	Yes
Investments to upgrade high risk locations	Yes
Policies & investment in urban public transport	Yes

**SAFER VEHICLES**

Total registered vehicles for 2016	2 606 412
Cars and 4-wheeled light vehicles	2 388 415
Motorized 2- and 3-wheelers	126 630
Heavy trucks	82 563
Buses	8 804
Other	0

**Vehicle standards applied (UNECE WP.29)**

Frontal impact standard	Yes
Electronic stability control	Yes
Pedestrian protection	Yes
Motorcycle anti-lock braking system	Yes

**POST-CRASH CARE**

National emergency care access number	National, single number
Trauma registry	None
Formal certification for prehospital providers	Yes
National assessment of emergency care systems	No

**DATA**

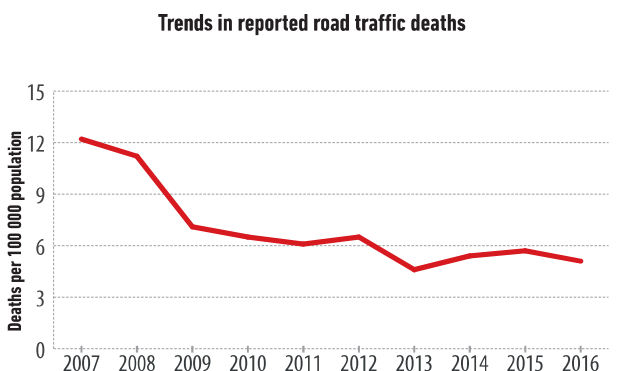
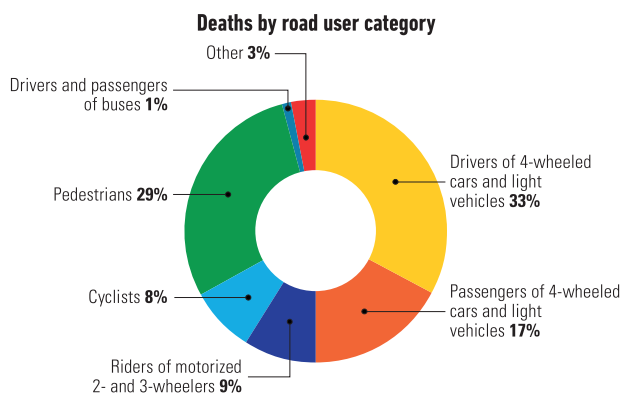
Reported road traffic fatalities (2016)	275 <sup>a</sup> (78% M, 22% F)
Reported rate per 100 000 population (2016)	5.1 <sup>a</sup>
WHO estimated road traffic fatalities (2016)	330 <sup>b</sup>
WHO estimated rate per 100 000 population (2016)	6.1 <sup>b</sup>

<sup>a</sup> Road Accident Database (ISDN). Died within 30 days of crash  
<sup>b</sup> WHO's method to obtain comparable country estimates: Group 1. Countries/areas with good death registration data. See explanatory note 3 in *Global status report on road safety 2018* for full details

**SAFER ROAD USERS**

National speed limit law	Yes
Max urban speed limit	50 km/h
Max rural speed limit	90 km/h
Max motorway speed limit	130 km/h
Local authorities can modify limits	No
Self-reported enforcement	0 1 2 3 4 5 6 7 8 9 10
Predominant type of enforcement	Manual
National drink-driving law	Yes <sup>c</sup>
BAC limit – general population	0.00 g/dl <sup>c</sup>
BAC limit – young or novice drivers	0.00 g/dl <sup>c</sup>
Random breath testing carried out	Yes
Testing carried out in case of fatal crash	All drivers tested
Self-reported enforcement	0 1 2 3 4 5 6 7 8 9 10
% road traffic deaths involving alcohol	6% <sup>d</sup>
National motorcycle helmet law	Yes
Applies to drivers and passengers	Yes
Helmet fastening required	Yes
Helmet standard referred to and/or specified	No
Children passengers on motorcycles	Prohibited under 12 yrs
Self-reported enforcement	0 1 2 3 4 5 6 7 8 9 10
Helmet wearing rate	–
National seat-belt law	Yes
Applies to front and rear seat occupants	Yes
Self-reported enforcement	0 1 2 3 4 5 6 7 8 9 10
Seat-belt wearing rate	–
National child restraint law	Yes
Children seated in front seat	Allowed in a child restraint <sup>e</sup>
Child restraint required	Up to 150 cm
Child restraint standard referred to and/or specified	Yes
Self-reported enforcement	0 1 2 3 4 5 6 7 8 9 10
% children using child restraints	–
National law on mobile phone use while driving	Yes
Ban on hand-held mobile phone use	Yes
Ban on hands-free mobile phone use	No
National drug-driving law	Yes

<sup>c</sup> Driving with presence of any alcohol in the body is prohibited  
<sup>d</sup> 2016, Road Accident Database (ISDN)  
<sup>e</sup> Provided that airbag is deactivated if child is in a rear-facing child restraint system



Source: 2016, Road Accident Database (ISDN)

Source: Road Accident Database (SEDN) for 2007-2009; Road Accident Database (ISDN) for 2010-2016; and Statistical Bureau of Slovak Republic