

Best viewed using Chrome, Safari or Internet Explorer 9 or higher. If you are having trouble viewing this page please [click here](#) for the alternative viewer.
Please note that the COVID-19 epidemiological report will next be published on 28 December 2020 and 8 January 2021.

Key points

Week 50/2020 (7 - 13 Dec 2020)

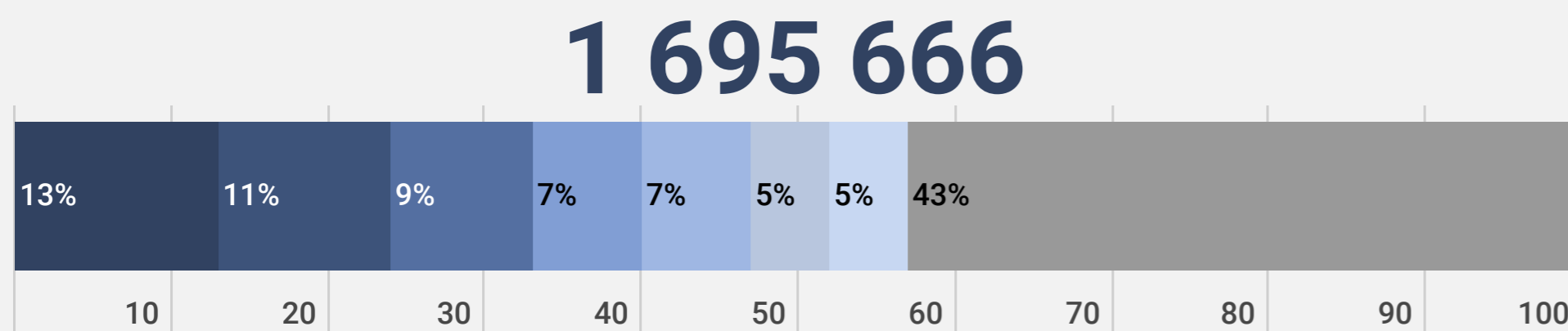
- The number of cases reported in the Region increased to 1 695 666 in week 50/2020 from 1 661 639 in week 49/2020
- 57% (967 187) of the cases reported in week 50/2020 were reported from seven countries: Turkey (13%; 219 115), Russian Federation (11%; 193 158), Germany (9%; 149 394), United Kingdom (7%; 124 985), Italy (7%; 115 784), France (5%; 83 844) and Ukraine (5%; 80 909). The remaining cases (43%; 728 477) were reported by 52 countries and territories, each accounted for <5% of the total cases reported in week 50/2020
- The crude incidence continues to vary across the region with a range from 3 per 100,000 population in Uzbekistan to 691 per 100 000 population in Luxembourg in week 50/2020
- 57% (19 944) of a crude incidence of ≥500 per 100 000 population in week 50/2020: Luxembourg (691), Serbia (684), Georgia (682), Lithuania (669), Croatia (607), Slovenia (514) and Montenegro (503) (Figure 2A). A total of 30 countries had a crude incidence of ≥200 per 100 000 population in week 50/2020
- The 14-day cumulative incidence increased by ≥10% in week 50/2020 in 22 countries and territories in the Region; an increase of ≥50% was observed in five of these countries and territories: Faroe Islands, Jersey, Turkey, Israel and Denmark (see [EURO COVID-19 Dashboard](#) for recent trends)
- The number of deaths in the Region in week 50/2020 decreased to 35 101 from 35 664 in week 49/2020 (Figure 1). The proportion of reported cases that died was 2.1% in week 50/2020
- 57% (19 944) of the deaths reported in week 50/2020 were reported by Italy (13%; 4 522), Russian Federation (11%; 3 800), Germany (9%; 3 015), United Kingdom (9%; 3 012), Poland (8%; 2 815) and France (8%; 2 780)
- The remaining deaths (43%; 15 157) were reported from 47 countries and territories; each accounted for <5% of the total deaths reported in week 50/2020
- Community-transmission was reported by 35 countries and territories, 19 countries and territories reported cluster transmission, while 4 countries and territories reported sporadic transmission in week 50/2020
- For an interactive subnational view of the recent COVID-19 situation in the WHO-EURO Region see the [WHO-EURO COVID-19 Subnational Explorer](#)

Summary overview

- The cumulative cases across the Region increased 8.4% to 22 001 830 cases in week 50/2020 (from 20 306 164 cases in week 49/2020) and cumulative deaths increased by 7.8% to 486 412 deaths (from 451 311 deaths in week 49/2020)
- As of 3 December 2020, 11 countries in the Region had an effective reproductive number significantly over 1: Czech Republic, Denmark, Faroe Islands, France, Germany, Israel, Jersey, Netherlands, San Marino, Slovakia and the United Kingdom (See [EpiForecasts](#) and the CMMID COVID working group COVID-19 Global Summary for latest estimates)
- Seven countries in the Region each reported a cumulative incidence of ≥500 cases per 100,000 population: Andorra (9447), Luxembourg (6703), Montenegro (6639), San Marino (5705), Czech Republic (5417), Belgium (5278) and Armenia (5015) (Figure 2B)
- As of week 50/2020, 63% (13 867 142) of cumulative cases were reported from the Russian Federation (12%; 2 653 928), France (11%; 2 365 319), United Kingdom (8%; 1 830 956), Italy (8%; 1 825 775), Spain (8%; 1 748 376), Germany (6%; 1 320 716), Poland (5%; 1 126 700) and Turkey (5%; 995 471). The remaining cases (37%; 8 134 589) were reported by 53 countries and territories; each accounted for <5% of the total cases reported until week 50/2020
- As of week 50/2020, 62% of cumulative deaths (303 620) were reported from the Italy (13%; 64 036), United Kingdom (13%; 64 026), France (12%; 57 761), Spain (10%; 48 180), the Russian Federation (10%; 46 941) and Poland (5%; 22 676). The remaining deaths (38%; 182 792) were reported by 52 countries and territories; each accounted for <5% of the total cases reported until week 50/2020
- 18% of cases were in persons aged ≥65 years in week 50/2020, a decrease from 36% in week 14/2020, while the percentage of fatal cases aged ≥65 years was 86% in week 50/2020 (compared to 91% in week 14/2020) (Figure 3)
- 89% of all deaths with information available were in persons aged ≥65 years and 56% of all deaths were in men (Table 1). 96% of all deaths with information available had at least one underlying condition, with cardiovascular disease the leading comorbidity (82%) (Table 1)
- The latest weekly pooled EuroMOMO estimates show a substantial increased excess all-cause mortality overall for the participating European countries, coinciding with a reported increase in COVID-19 cases in several countries. This excess mortality is driven by a very substantial excess mortality in some countries, while other countries see normal mortality levels. The increased excess all-cause mortality is primarily seen among persons aged 45 years and older.
- In week 50/2020, 18 countries reported a total of 950 tests and 217 detections (22.8%) of SARS-CoV-2 in persons with influenza-like illness (ILI) in primary care sentinel surveillance (Figure 4)
- Overall, there were 951 910 COVID-19 cases among the total of 9 531 164 tests (10%) reported to have been performed in 31 countries in week 50/2020 (Figure 5)

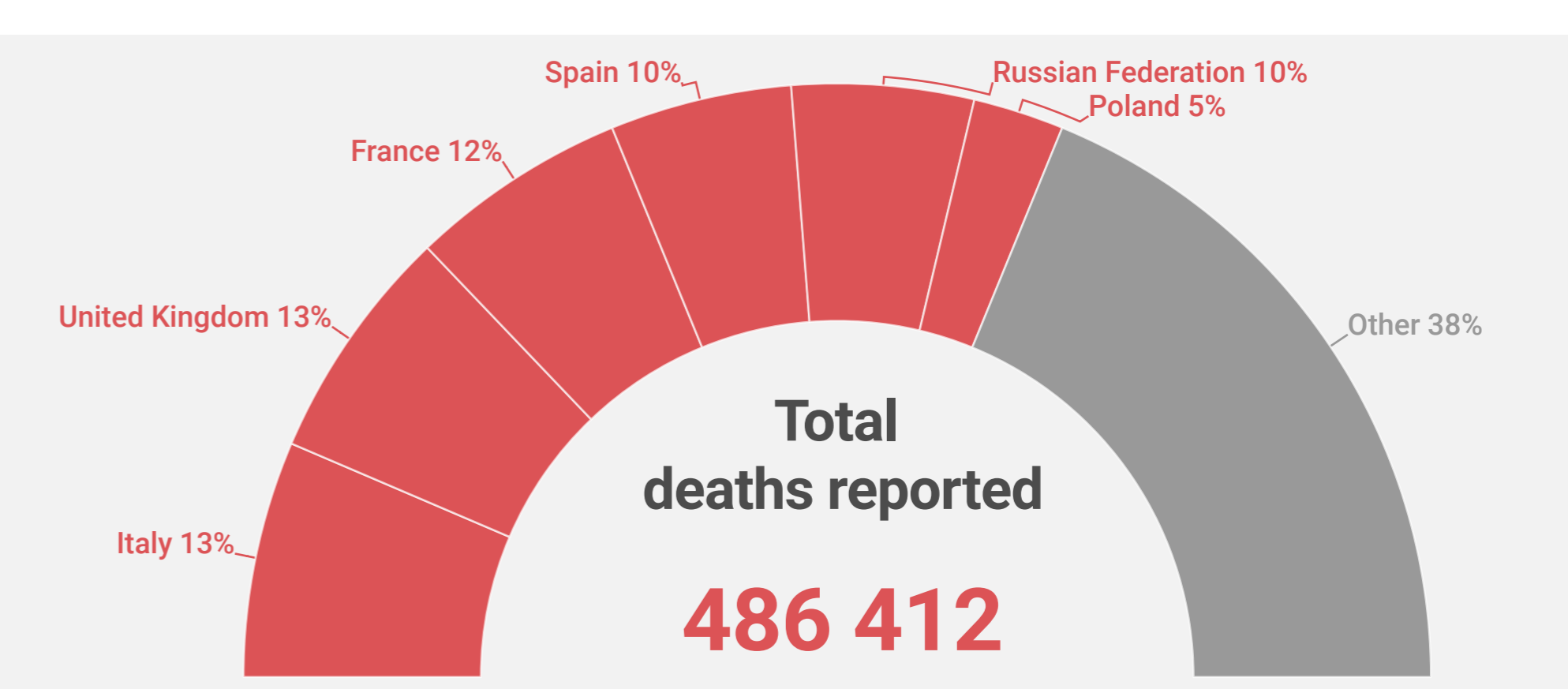
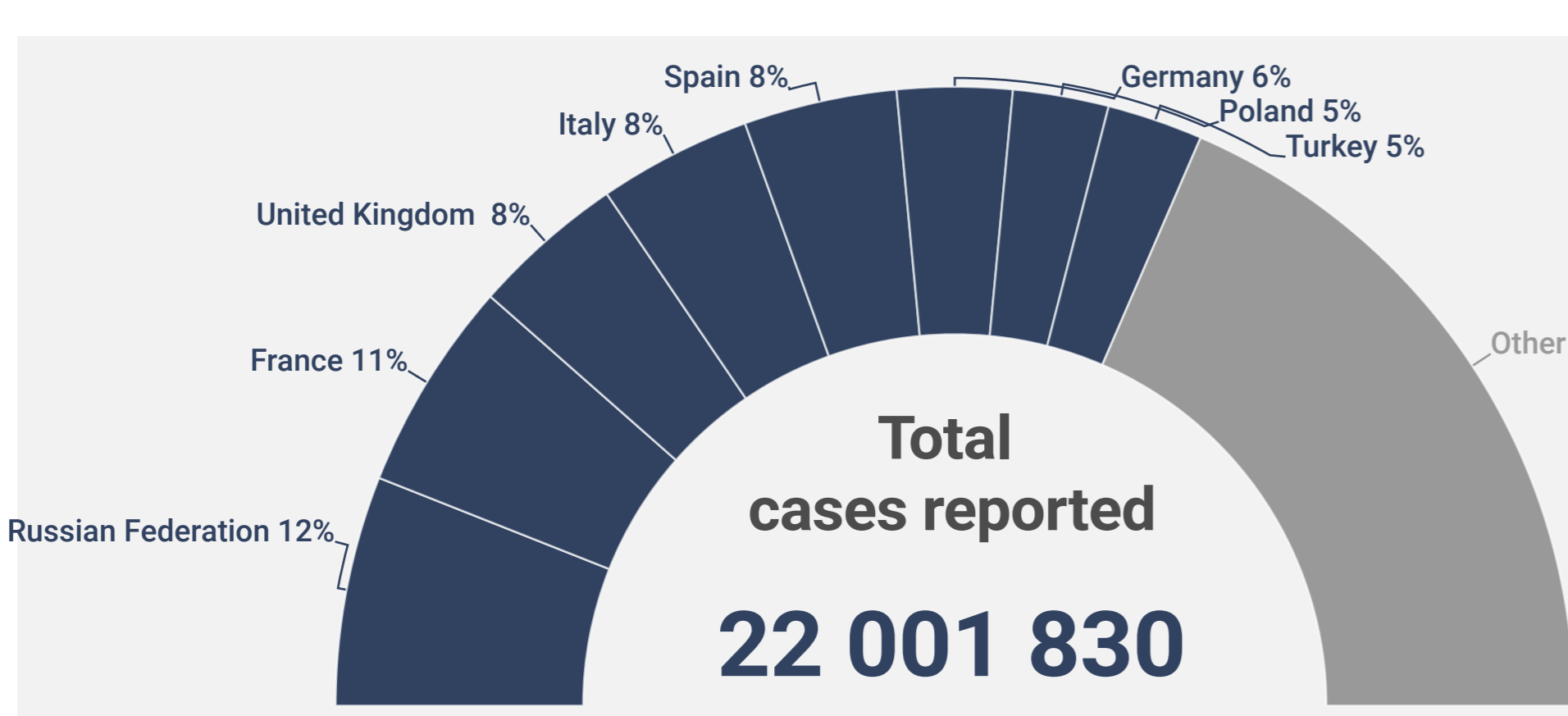
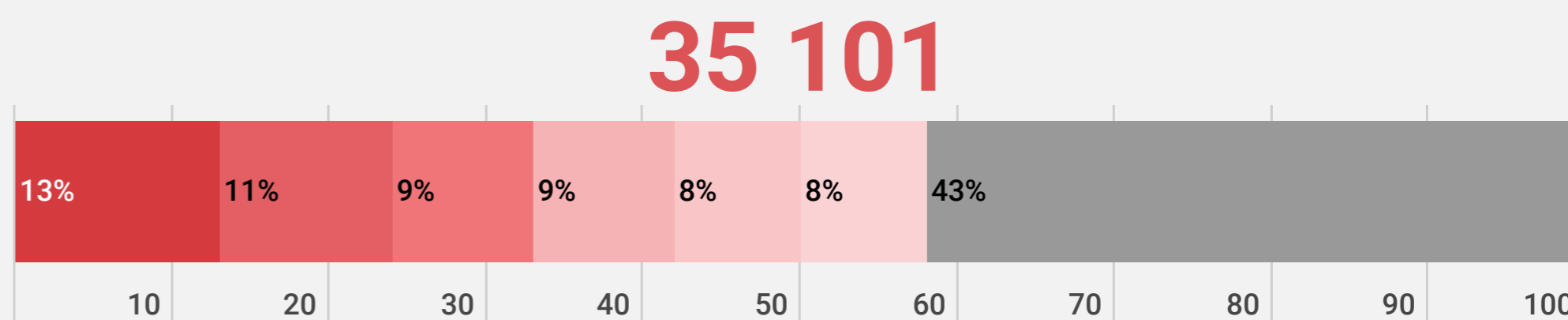
New cases (week 50/2020)

1 695 666



New deaths (week 50/2020)

35 101



Note: Reported cases and/or deaths from IHR States Parties may be subject to retrospective adjustments. * All references to Kosovo in this document should be understood to be in the context of the United Nations Security Council resolution 1244 (1999).

89%
of all deaths
were in persons aged 65+

56%
of all deaths
were in men

96%
of all deaths
had at least 1 underlying
condition

82%
of all deaths
had cardiovascular disease

For more detailed information see: [WHO Global situation reports](#) [WHO Global situation dashboard](#)

Figure 1: Number of COVID-19 cases (N=22 001 830) and deaths (N=486 412) by reporting week

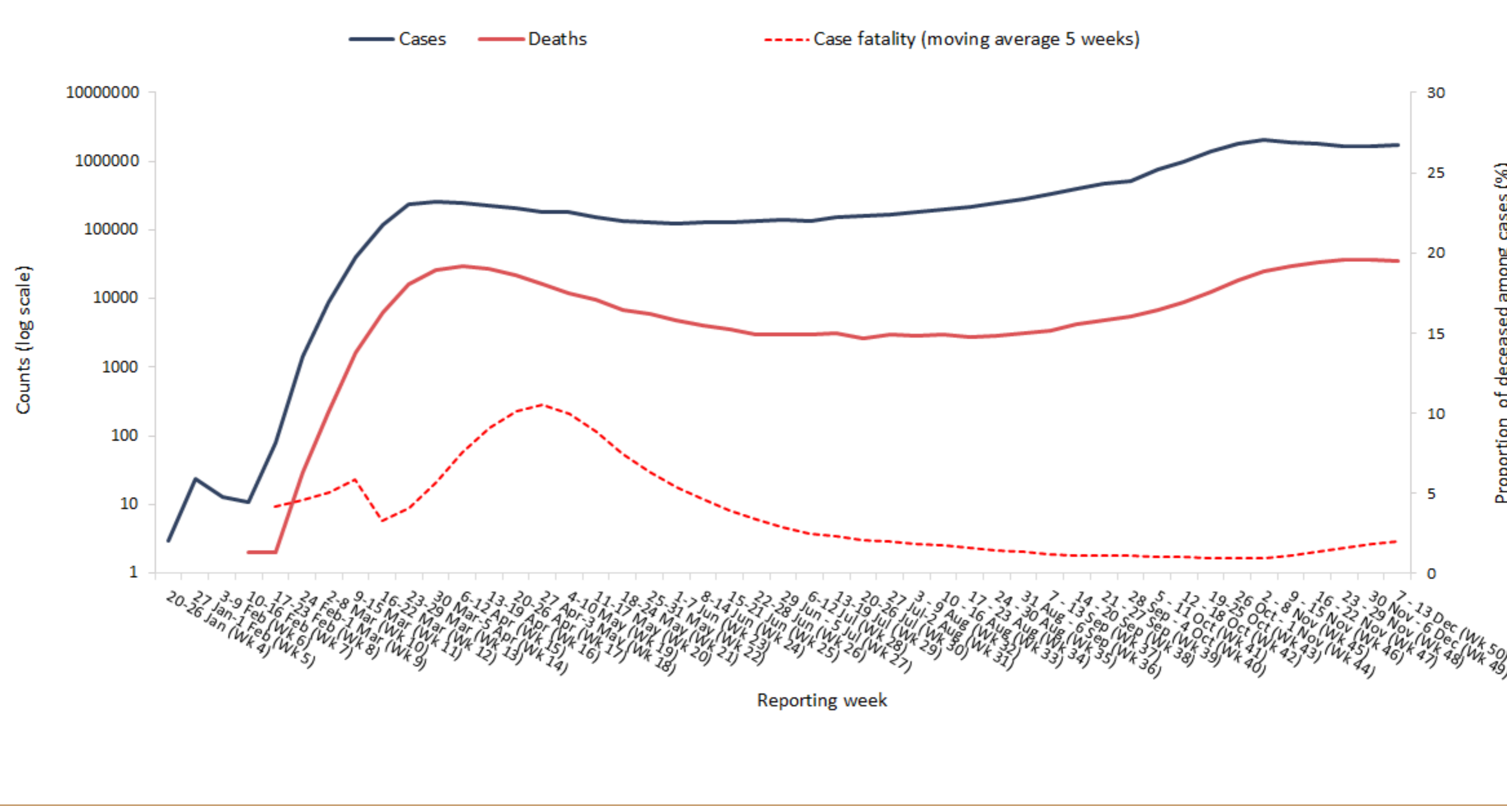


Figure 2A. COVID-19 incidence per 100,000 population and number of deaths by country for week 50

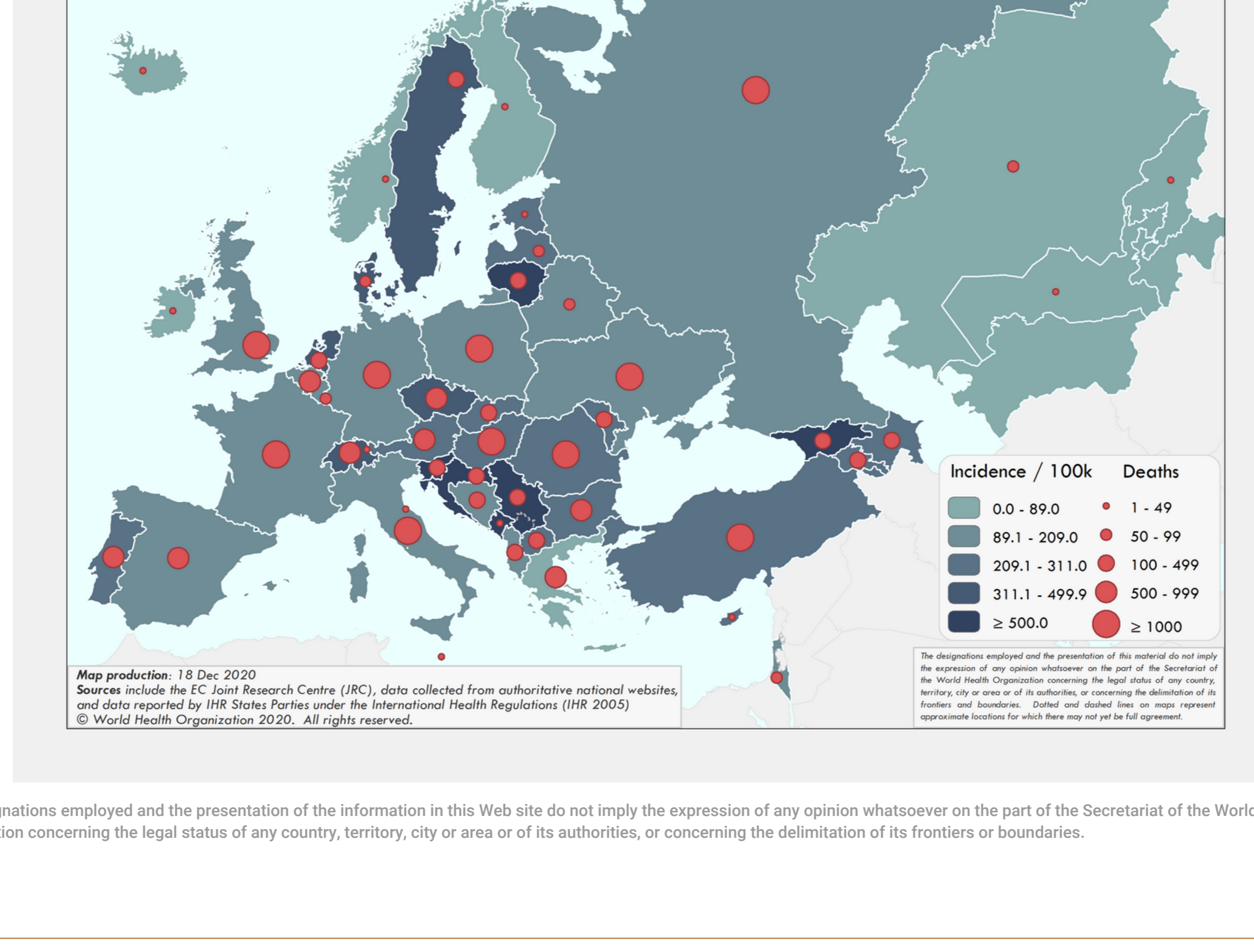


Figure 2B. COVID-19 cumulative incidence per 100,000 population and number of deaths by country

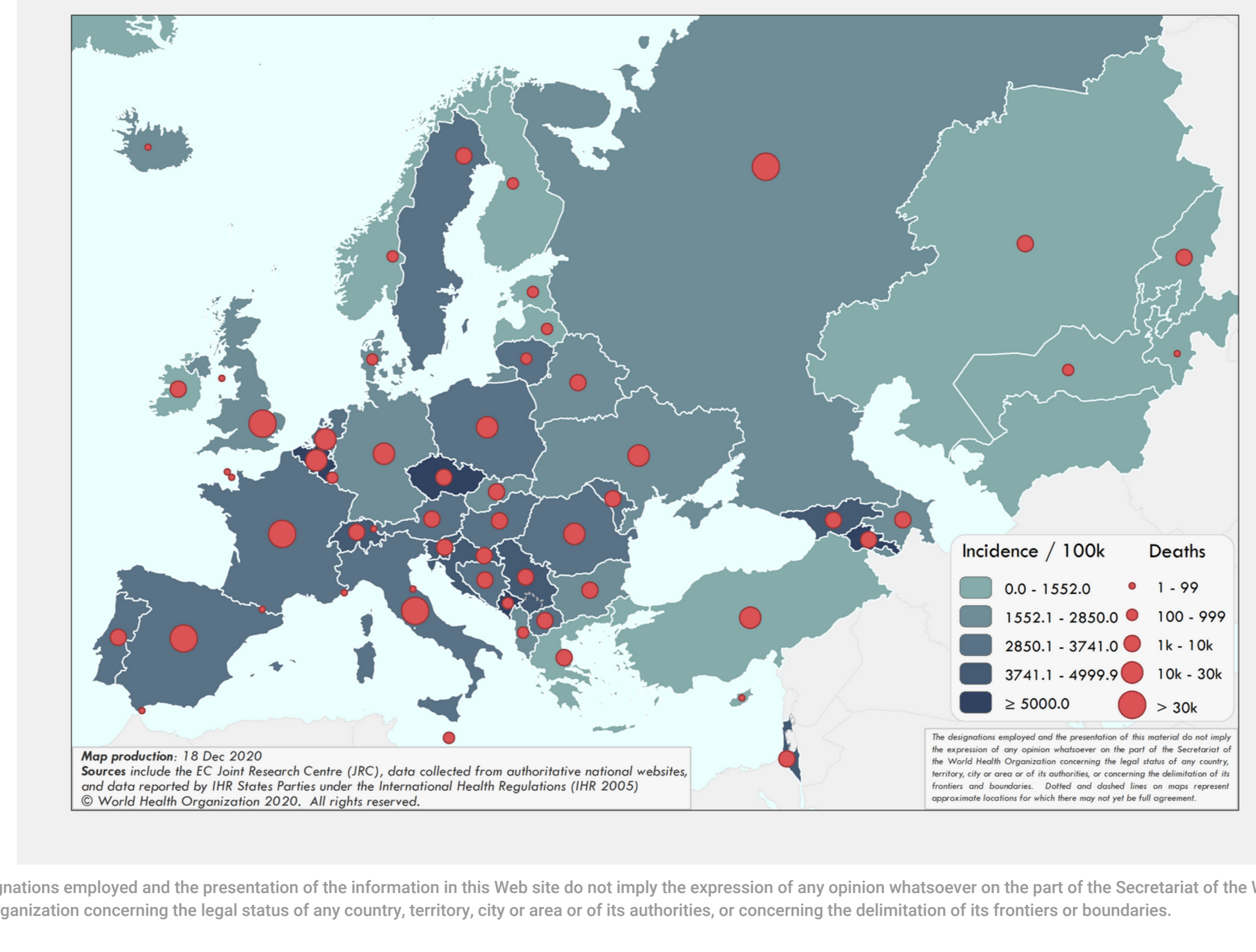
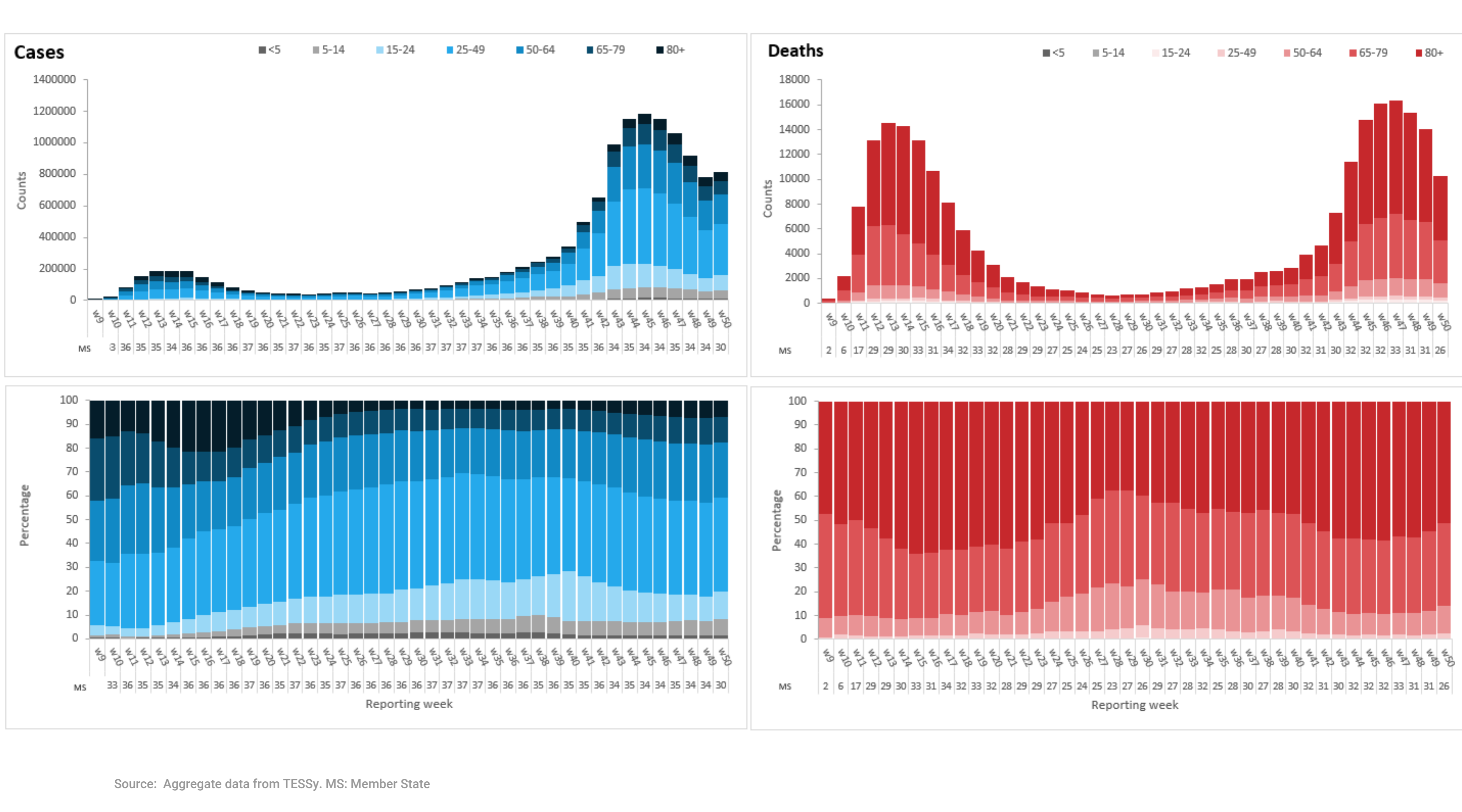


Table 1. Characteristics of COVID-19 deaths

| Characteristics | n | % | Total records with data available |
|-----------------------------------|------------|----|-----------------------------------|
| Age in years, median (range) | 82 (0-109) | | 156,341 |
| Sex, male | 87,940 | 56 | 156,253 |
| At least one underlying condition | 73,372 | 96 | 76,745 |
| ● cardiovascular disease | 17,167 | 82 | 20,885 |
| ● diabetes | 6,046 | 60 | 9,999 |
| ● lung disease | 2,351 | 23 | 10,415 |
| ● neurological disease / dementia | 2,603 | 20 | 13,341 |
| ● renal disease | 1,207 | 24 | 4,973 |
| ● obesity | 955 | 13 | 7,591 |
| ● liver disease | 873 | 7 | 12,674 |
| ● immune disease | 360 | | 7,866 |

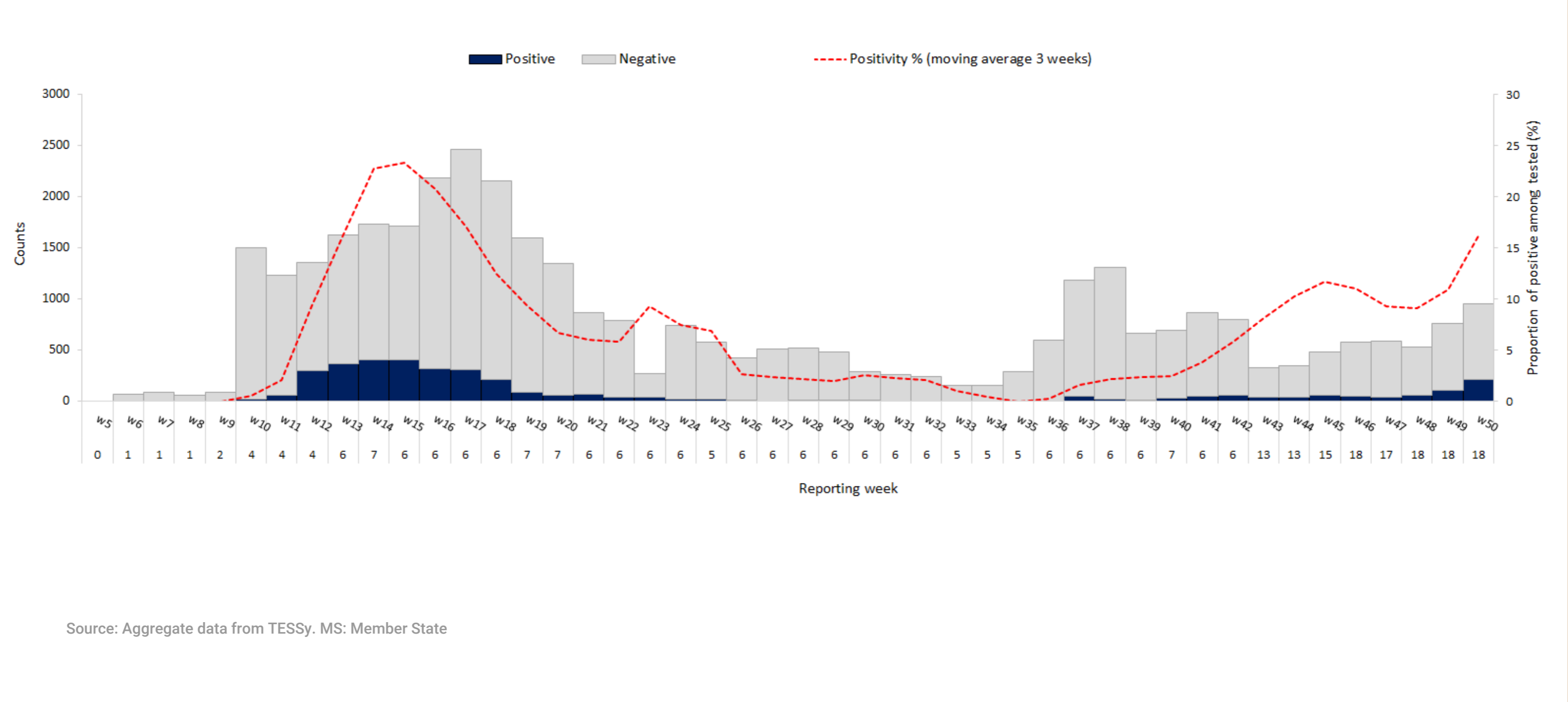
Source: Mortality database (n=156 406)

Figure 3. COVID-19 cases (N=12 764 430) and deaths (N=236 313) by age group and reporting week



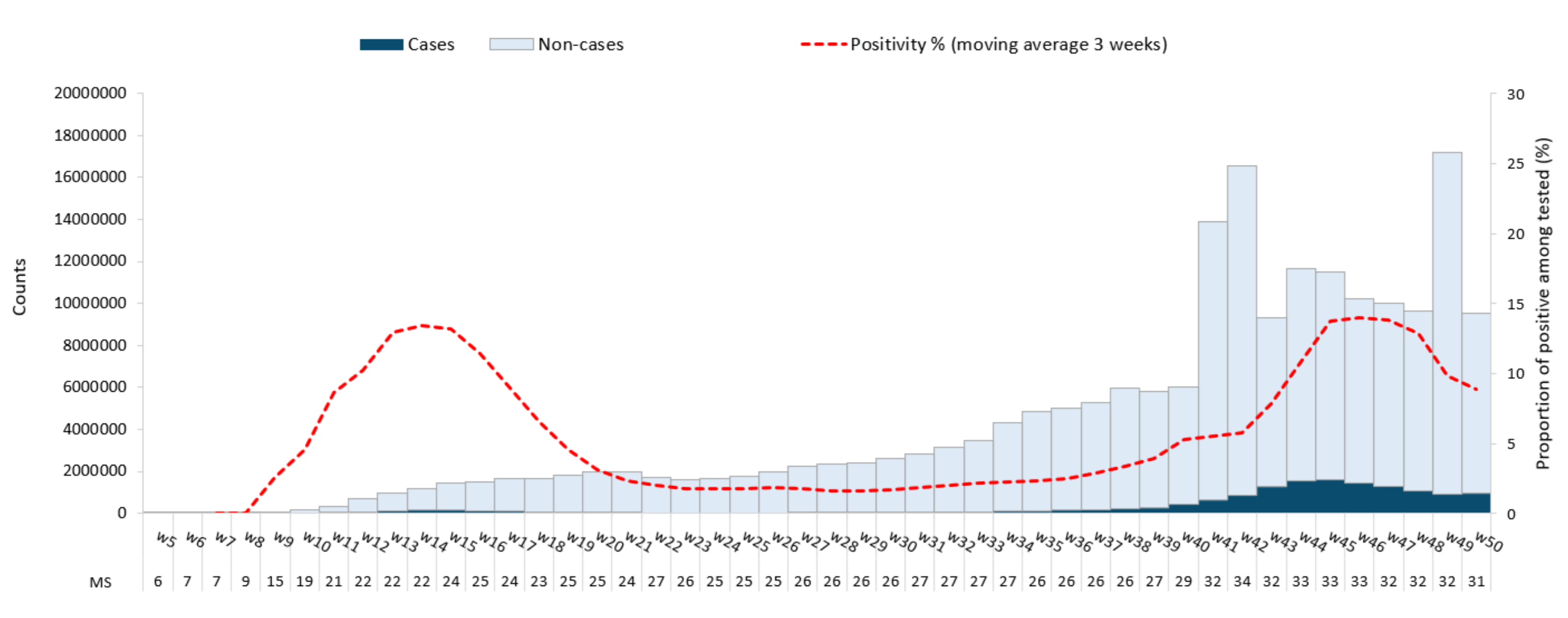
Source: Aggregate data from TESSy. MS: Member State

Figure 4. Percentage positive for COVID-19 in the ILI/ARI sentinel surveillance by reporting week



Source: Aggregate data from TESSy. MS: Member State

Figure 5. Percentage positive for COVID-19 among all tested by reporting week



Source: Aggregate data from TESSy. Note: Member States that report cases only (no testing data) are not included. MS: Member State