

WHO Epidemiological Brief



A monthly publication on vaccine-preventable diseases and immunization data and analysis

Highlighting in the WHO European Region:

- Update on measles in the European Region
- Update on rubella in the European Region
- Ukraine: Measles outbreak
- Regional and global Polio outbreak status

Summary

Measles and rubella

Incomplete reporting makes it difficult to provide an accurate number of measles cases for 2012, thus far. The officially reported number of cases (4 463) is much lower than the actual number, with the Ukrainian Ministry of Health, for example, reporting nearly 8 000 cases on its web site. Romania continues to report the highest number of rubella cases in the Region, as it faces an ongoing outbreak.

Polio

The European Region has retained its polio-free status after a 2010 polio outbreak, but remains at risk of the poliovirus importation while polio is still endemic in countries like Afghanistan and Pakistan. A recent outbreak in China, which is no longer considered active, offers a sobering illustration of this risk. Consequently, it is critical to maintain high quality AFP, enterovirus and environmental surveillance in the Region to ensure early detection of wild poliovirus importation.

As of 01 April, a total 4 463 measles cases have been officially reported to the Regional Office from 25 Member States since the beginning of 2012. Please note that the actual number of cases for the first three months of the year is higher than the number officially reported. Due to complex, multilevel administrative structures, as well as outbreak management, notification of cases is often delayed and incomplete. Epidemiological Brief provides officially reported data on a routine basis. In the case of large outbreaks this publication will draw on other reliable

sources, such as governmental websites and communications with partners, to provide timely analysis of the situation.

Measles in February 2012 (monthly report):

A total of 749 measles cases were reported in February. This number is considerably lower than the number of cases reported in January, however WHO notes that this is largely due to incomplete official reporting from Member States. According to preliminary information from a review mission to Ukraine led by the Regional Office's immunization programme, as well as data presented on the Ukrainian Ministry of Health (MOH) website, Ukraine has reported around 2 000 measles cases with onset in February (as of 13 April 2012, the Ukrainian MOH web site reports a total number of 7 582 measles cases since the beginning of 2012). Therefore, it is expected that the number of cases in February is in the range or higher than the number of cases with onset in January. The number of reported measles cases is increasing in France (105 in January, 122 in February) and Italy (54 in January, 74 in February). The Regional Office is following-up with Spain and the Russian Federation on the number of cases in February, as both countries notified WHO of measles outbreaks (not officially reported).

Expected monthly measles surveillance reports for February have been received from 42 Member States; with 19 countries reporting 749 confirmed measles cases and 23 countries providing a "zero" report (no measles cases in February). The regional measles database is missing February data from 9 of the 51 Member States that provide monthly reports (2 Member States do not report on a monthly basis).

Rubella in 2012

As of 01 April, 5 583 confirmed rubella cases were reported in 2012 by 12 of the 34 Member States that provide monthly reports on rubella. Monthly rubella data from 13 Member States are not available due to varying reasons, and an additional 11 Member States in the Region do not report ru-

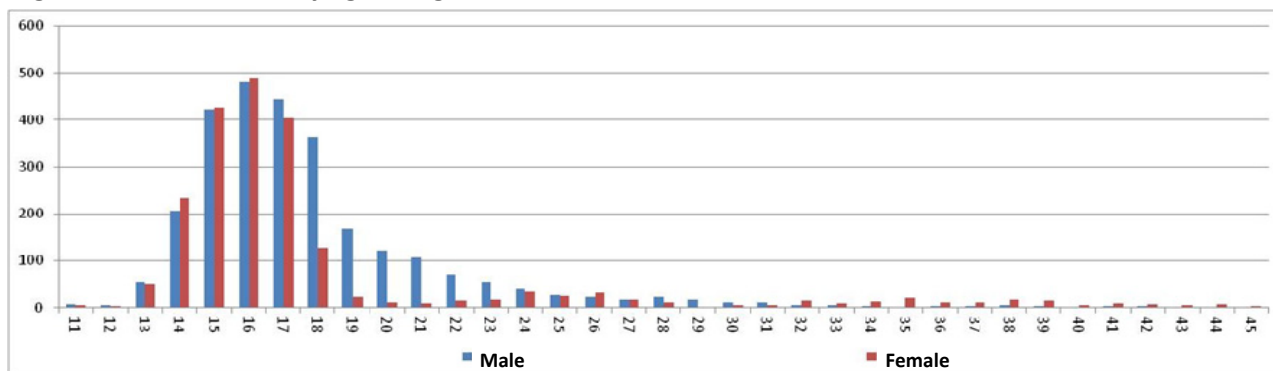
bella on a monthly basis or do not have rubella surveillance.

Rubella in February 2012 (monthly report):

Nine Member States reported 4 475 confirmed rubella cases with onset in February 2012. Romania, where an outbreak continues, reported the highest number of cases in February (4 051 cases in Febru-

ary 850 cases in January). According to data received from Romania, most of the cases are between 13 and 26 years of age and 43.5% of cases are female. Poland has also reported 279 cases in February, and the Russian Federation has reported 121 cases. Reports for February were received from 31 Member States. Most countries provided a “zero” report (22 with no cases in February).

Figure 1: Rubella cases by age and gender, Romania, 2012



Ukraine: Measles outbreak

As previously noted, a measles outbreak is ongoing in Ukraine. Ukraine has not reported measles data to the WHO European Regional database (CISID) since January 2012. Given the magnitude of the measles outbreak in Ukraine, concern of measles spread to other countries is mounting as we approach the forthcoming UEFA championship in Ukraine.

The WHO Regional Office for Europe is tracking the Ukrainian Ministry of Health’s website for the latest measles case count. A website bulletin as of 17 April 2012 reports a total of 7,997 measles cases between 01 January - 19 April 2012.

A group of experts from WHO headquarters and the Regional Office, ECDC, CDC and UNICEF visited Ukraine between 27 Feb. – 7 Mar. 2012 to conduct an immunization programme review. During the mission the team had the opportunity to discuss the latest data and response measures. More detail of this mission will be released soon.

Excerpt from the official Ministry of Health website (19/04/2012):

According to available statistics, as of April 19, 2012, Ukraine has recorded 7,997 cases of measles since the beginning of the year. Most cases are reported from the western region of the country.

Source: http://www.moz.gov.ua/ua/portal/pre_20120419_4.html

WHO/European Region and Global Wild poliovirus update

Four Member States (Fig. 2) in the Region were infected with wild poliovirus in 2010 after an outbreak occurred in Tajikistan. The outbreak was contained within nine months by numerous high quality rounds of supplementary immunization activities using mOPV1 and tOPV vaccines. The last poliovirus case in the Region was reported on 25 September 2010. Since then, more than 2 400 acute flaccid paralysis (AFP) cases have been reported and investigated with no wild poliovirus detected. The Region's polio free status was sustained and confirmed by the Regional Polio Certification Commission in August 2011.

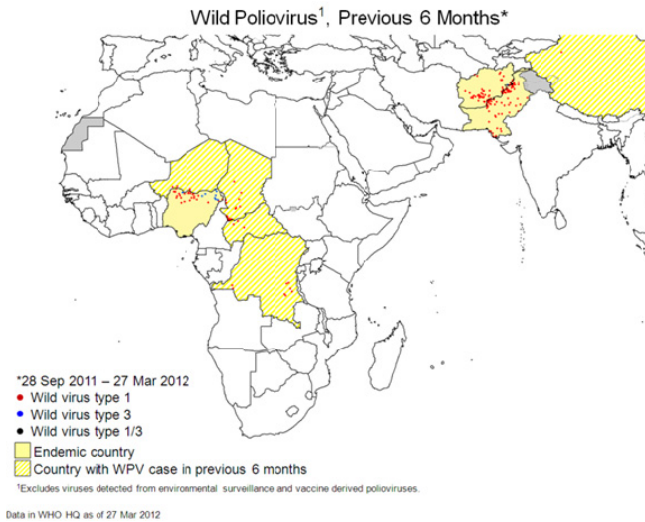
Globally (Fig. 3), three polio endemic countries (Afghanistan, Pakistan and Nigeria) have contributed to importation of wild poliovirus in other countries in Africa and Asia. Until polio eradication is achieved globally, the threat of polio importation in the European Region remains. To ensure early detection of wild poliovirus importation in any of the WHO European Region's Member States, it is important to maintain high quality AFP, enterovirus and environmental surveillance of poliovirus in the Region. See Table 5 to view the status and performance of AFP surveillance in Member States.

China off the list of countries with active polio outbreaks

In the second half of 2011, China reported 18 confirmed polio cases; 12 in Hotan prefecture, 5 in

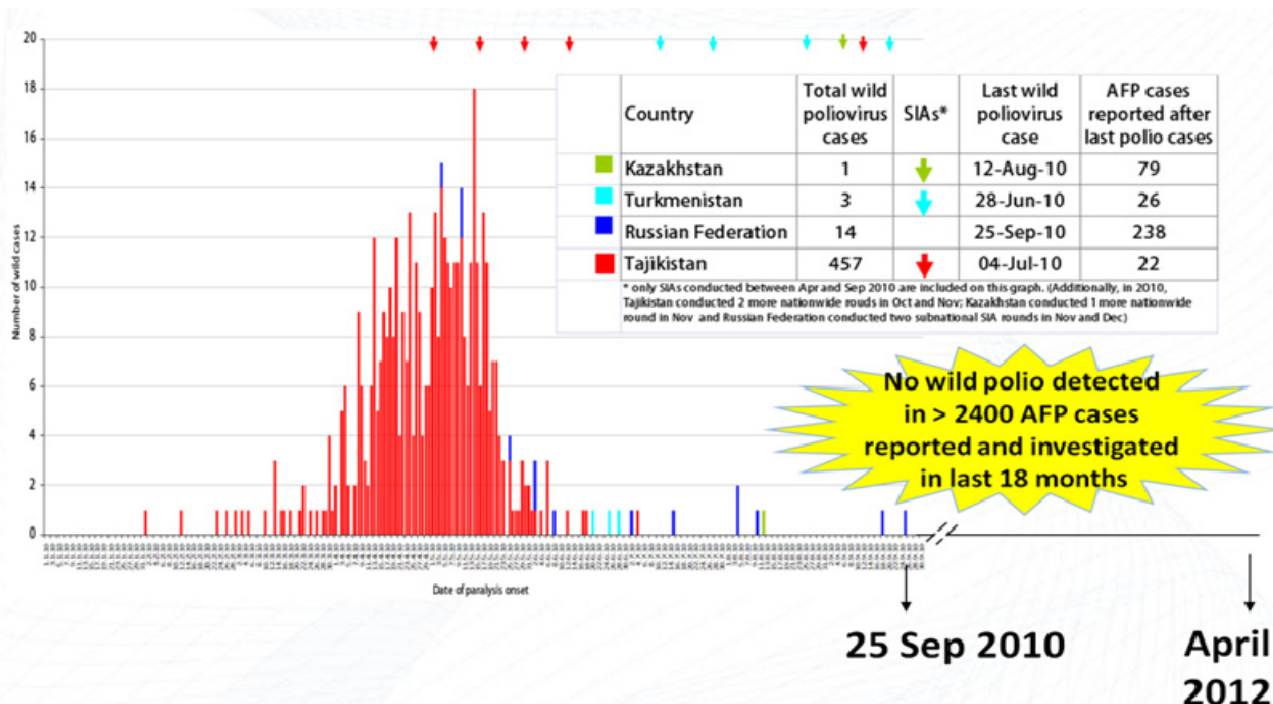
Kashgar prefecture and 1 in Bazhou prefecture. Half of the cases were in very young children (under 3 years of age) and half in young adults (19-31 years of age).

Fig. 3: Wild polio virus, last 6 months, Global



China's strong response to the introduction and spread of wild poliovirus in the Xinjiang Uyghur Autonomous Region in 2011 has resulted in an important milestone, as China was removed from the list of countries with active polio outbreaks on 10 April 2012. Despite intensive surveillance, no new poliovirus infections have been detected for more than six months in Xinjiang since the onset of the last polio case on 9 October 2011. Four rounds of mass immunization took place between September 2011 and March 2012.

Fig. 2: Wild Poliovirus outbreak in 4 member states of WHO Regional Office for Europe, 2010



All countries of the European Region set to take part in EIW 2012

WHO/Europe today received confirmation that, for the first time since the introduction of European Immunization Week (EIW) in 2005, all 53 countries of the WHO European Region will take part in the initiative. The fact that all 53 countries have joined EIW provides a compelling display of the Region's unified commitment to raising awareness about immunization and spreading EIW's central message: Prevent. Protect. Immunize.

All participating countries will recognize EIW from 21 to 27 April 2012 and will organize immunization activities on a national level. In past years, these activities have ranged from conducting supplementary immunization activities (SIAs) or catch-up immunization campaigns, to developing and disseminating public information materials, to organizing conferences and health worker trainings on immunization, to launching innovative communication tools such as iPhone applications, etc.

This year, on a regional level, WHO/Europe will emphasize the critical role frontline health workers play in ensuring the success of national immunization programmes. In connection with this focus for EIW, the Vaccine-preventable Diseases and Immunization (VPI) programme at WHO/Europe has recently launched an online Immunization Resource Centre where health workers can download job aids to assist in their daily communications with patients about immunization. In 2012, European Immunization Week will happen simultaneously with immunization weeks in all WHO Regions, marking the first ever World Immunization Week.

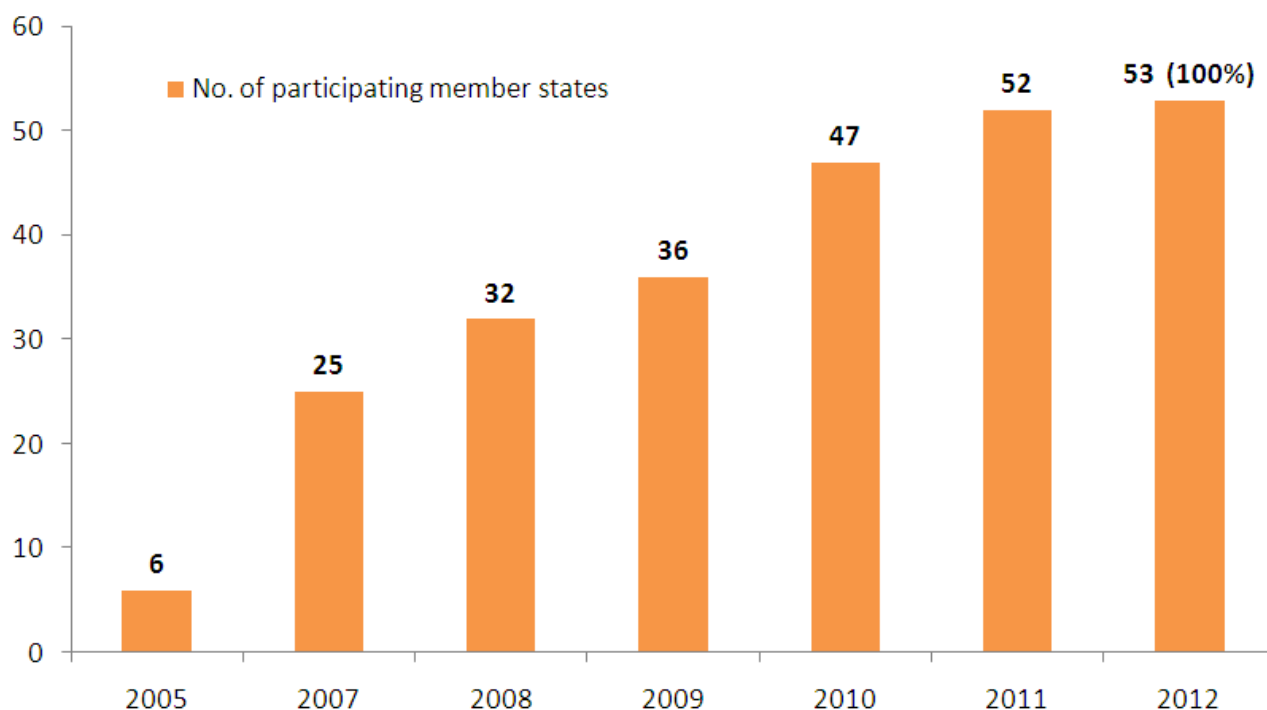
<http://eiw.euro.who.int> (EIW campaign site)

<http://www.euro.who.int/eiw> (WHO/Europe site)

<http://www.euro.who.int/vaccine/resourcecentre> (resource centre)

http://www.who.int/immunization/newsroom/events/immunization_week/en/index.html (World Immunization Week)

European Immunization Week



Monthly Summary Table 1: Confirmed measles cases for last 12 months, March 2011—February 2012 (data as of 1 April 2012)

Country	Total Population ¹	Incidence Rate per 1 million population Mar 11-Feb 12	Total Cases Mar 11-Feb 12	2011 (Year and month of Rash onset)												2012		Month of last report
				Mar	Apr	May	Jun	Jul	Aug	Sep	Oct	Nov	Dec	Jan	Feb			
Albania	3 214 691	0.0	0	0	0	0	0	0	0	0	0	0	0	0	0	0	Feb	
Andorra	67 722	0.0	0	0	0	0	0	0	0	0	0	0	-	0	0	Feb		
Armenia	3 098 784	0.0	0	0	0	0	0	0	0	0	0	0	0	0	0	Feb		
Austria	8 405 570	10.4	87	5	9	18	33	16	4	2	0	0	0	0	-	Feb		
Azerbaijan	9 309 301	0.0	0	0	0	0	0	0	0	0	0	0	0	0	0	Feb		
Belarus	9 568 453	5.9	56	1	0	16	29	4	0	0	0	0	1	5	0	Feb		
Belgium	10 741 129	52.4	563	145	103	123	91	45	10	10	3	13	1	12	7	Feb		
Bosnia and Herzegovina	3 755 478	1.3	5	0	0	0	0	0	0	4	1	0	0	-	-	No Report		
Bulgaria	7 449 799	7.1	53	27	6	18	1	0	0	1	0	0	0	0	0	Feb		
Croatia	4 397 338	1.1	5	0	0	0	3	2	0	0	0	0	0	-	-	No Report		
Cyprus	1 116 113	0.9	1	0	0	0	0	0	0	0	0	0	0	0	1	Feb		
Czech Republic	10 522 894	2.1	22	4	5	4	1	1	1	0	0	0	2	3	1	Feb		
Denmark	5 570 660	11.7	65	23	20	17	2	2	0	0	0	0	0	1	0	Feb		
Estonia	1 340 887	5.2	7	4	1	1	1	0	0	0	0	0	0	0	0	Feb		
Finland	5 381 049	5.6	30	1	2	12	3	0	6	0	1	3	0	0	2	Feb		
France	63 103 600	181.2	11434	3716	3304	2267	927	408	148	90	81	122	144	105	122	Feb		
Georgia	4 330 693	14.8	64	4	3	11	6	7	17	6	7	1	1	1	0	Feb		
Germany	82 140 752	17.7	1451	187	430	433	168	112	37	27	11	22	5	12	7	Feb		
Greece	11 392 891	3.3	38	6	17	10	2	3	0	0	0	0	0	0	0	Feb		
Hungary	9 964 621	0.4	4	0	0	0	0	0	0	0	0	0	4	0	0	Feb		
Iceland	324 050	0.0	0	0	0	0	0	0	0	0	0	0	0	0	0	Feb		
Ireland	4 527 814	68.2	309	11	17	12	30	42	72	60	34	13	7	4	7	Feb		
Israel	7 545 524	8.3	63	4	0	3	2	0	0	21	10	4	2	3	14	Feb		
Italy	60 686 264	76.3	4629	577	920	1303	849	416	176	99	61	56	44	54	74	Feb		
Kazakhstan	16 240 343	1.7	27	15	0	0	0	-	-	-	-	-	-	1	11	Feb		
Kyrgyzstan	5 405 749	38.5	208	0	18	76	89	16	3	2	4	0	0	-	-	No Report		
Latvia	2 242 757	1.3	3	0	0	0	0	1	0	0	0	0	0	1	1	Feb		
Lithuania	3 311 227	2.1	7	0	1	2	4	0	0	0	0	0	0	0	-	Feb		
Luxembourg	514 108	11.7	6	1	0	2	2	0	1	0	0	0	0	0	0	Feb		
Malta	418 134	7.2	3	0	1	0	0	0	2	0	0	0	0	0	0	Feb		
Monaco	37 785	-	0	-	-	-	-	-	-	-	-	-	-	-	-	No Report		
Montenegro	632 157	7.9	5	3	1	0	1	0	0	0	-	-	-	-	-	No Report		
Netherlands	16 647 522	2.6	43	10	16	11	5	0	1	0	0	0	0	0	0	Feb		
Norway	4 917 917	4.3	21	7	2	3	4	1	2	1	1	0	0	0	0	Feb		
Poland	38 307 380	1.0	37	2	8	5	4	6	4	4	1	0	0	1	2	Feb		
Portugal	10 679 646	0.3	3	1	0	0	0	0	0	0	0	0	1	1	0	Feb		
Republic of Moldova	3 555 765	0.0	0	0	0	0	0	0	0	0	0	0	0	-	-	No Report		
Romania	21 445 408	208.4	4469	407	406	520	460	385	292	248	151	393	570	529	108	Feb		
Russian Federation	142 822 544	11.0	1571	22	24	20	42	22	7	9	58	211	312	570	274	Feb		
San Marino	29 332	-	0	-	-	-	-	-	-	-	-	-	-	-	-	No Report		
Serbia	9 842 939	26.1	257	120	63	37	25	6	4	2	0	0	0	0	-	Jan		
Slovakia	5 470 405	0.4	2	1	0	1	0	0	0	0	0	0	0	0	0	Feb		
Slovenia	2 035 215	11.3	23	0	2	1	7	12	0	0	0	0	0	1	0	Feb		
Spain	46 366 600	70.2	3257	423	653	667	345	248	146	185	168	203	108	58	53	Feb		
Sweden	9 427 367	3.9	37	1	8	4	1	2	1	0	1	3	0	2	14	Feb		
Switzerland	7 694 595	71.1	547	108	206	123	57	28	10	2	3	1	4	2	3	Feb		
Tajikistan	6 982 372	0.0	0	0	0	0	0	0	0	0	0	0	0	0	-	Feb		
The former Yugoslav Republic of Macedonia	2 063 819	267.0	551	204	236	74	24	6	2	0	0	0	2	0	3	Feb		
Turkey	73 689 680	0.9	68	40	12	5	5	6	0	0	0	0	0	-	-	No Report		
Turkmenistan	5 099 686	0.0	0	0	0	0	0	0	0	0	0	0	0	0	0	Feb		
Ukraine	45 242 024	80.0	3621	0	1	10	0	44	45	13	59	131	1009	2309	-	Jan		
United Kingdom	62 439 828	17.7	1103	143	173	186	133	105	60	54	73	63	29	39	45	Feb		
Uzbekistan	27 802 722	13.2	366	112	102	90	48	14	0	0	0	0	0	-	-	No Report		
Total/Averages	899 321 103	39.05	35121	6335	6770	6085	3404	1960	1051	840	728	1239	2246	3714	749			

¹ Source: "World Population Prospects: The 2008 Revision", New York, United Nations and updates provided by Member States.

Monthly Summary Table 2. Classification of reported suspected measles cases, January–February 2012 (data as of 1 April 2012)

Country	Total Population ¹	Incidence Rate per 1 million population (Jan-Dec)	Total confirmed measles	Classification			Discarded	Importation ³	Reporting			Surveillance Indicators (Please click here to refer Annex 8 of MR Surveillance guideline)		
				Lab confirmed	Epi-Link	Clinical ²			Completeness	Timeliness	Month of last report	Laboratory investigation rate	detection rate	Source of infection
Albania	3 226 922	0.0	0	0	0	0	1	0	100%	100%	Feb	100.0%	0.03	100.0%
Andorra	67 726	0.0	0	0	0	0	0	0	100%	50%	Feb	-	0.00	-
Armenia	3 107 085	0.0	0	0	0	0	1	0	100%	100%	Feb	100.0%	0.03	100.0%
Austria	8 418 180	0.0	0	0	0	0	0	0	100%	100%	Feb	-	0.00	-
Azerbaijan	9 417 527	0.0	0	0	0	0	3	0	100%	100%	Feb	100.0%	0.03	100.0%
Belarus	9 536 760	0.5	5	5	0	0	0	0	100%	100%	Feb	100.0%	0.00	100.0%
Belgium	10 770 406	1.7	19	10	1	8	0	1	100%	100%	Feb	55.6%	NA	NA
Bosnia and Herzegovina*	3 747 213	-	-	-	-	-	-	-	-	-	No Report	-	NA	NA
Bulgaria	7 401 269	0.0	0	0	0	0	0	0	100%	100%	Feb	-	0.00	-
Croatia	4 388 603	-	-	-	-	-	-	-	-	-	No Report	-	NA	NA
Cyprus	1 128 260	0.9	1	1	0	0	0	0	100%	100%	Feb	100.0%	0.00	0.0%
Czech Republic	10 547 860	0.1	4	4	0	0	0	3	100%	100%	Feb	100.0%	0.00	75.0%
Denmark	5 589 464	0.0	1	1	0	0	0	1	100%	100%	Feb	100.0%	0.00	100.0%
Estonia	1 339 829	0.0	0	0	0	0	0	0	100%	100%	Feb	-	0.00	-
Finland	5 397 248	0.4	2	1	0	1	0	0	100%	50%	Feb	50.0%	0.00	0.0%
France	63 417 636	3.5	227	82	31	114	0	5	100%	100%	Feb	57.7%	NA	NA
Georgia*	4 305 661	0.2	1	0	0	1	0	0	100%	100%	Feb	0.0%	0.00	0.0%
Germany	81 964 400	0.1	19	14	2	3	0	7	100%	100%	Feb	82.4%	0.00	100.0%
Greece	11 418 997	0.0	0	0	0	0	0	0	100%	100%	Feb	-	0.00	-
Hungary	9 947 105	0.0	0	0	0	0	0	0	100%	100%	Feb	-	0.00	-
Iceland	327 804	0.0	0	0	0	0	0	0	50%	50%	Feb	-	0.00	-
Ireland	4 579 823	2.4	11	3	1	7	0	0	100%	100%	Feb	50.0%	NA	NA
Israel*	7 672 910	2.2	17	0	0	17	0	0	100%	100%	Feb	0.0%	NA	NA
Italy	60 819 728	2.1	128	48	29	51	0	0	100%	100%	Feb	53.5%	NA	NA
Kazakhstan*	16 407 491	0.7	12	12	0	0	0	0	100%	100%	Feb	100.0%	0.00	0.0%
Kyrgyzstan	5 463 941	-	-	-	-	-	-	-	-	-	No Report	-	NA	NA
Latvia	2 233 986	0.4	2	2	0	0	0	1	100%	100%	Feb	100.0%	0.00	50.0%
Lithuania	3 296 148	0.0	0	0	0	0	0	0	50%	50%	Feb	-	0.00	-
Luxembourg	521 080	0.0	0	0	0	0	0	0	100%	100%	Feb	-	0.00	-
Malta	419 402	0.0	0	0	0	0	0	0	100%	100%	Feb	-	0.00	-
Monaco	38 222	-	-	-	-	-	-	-	-	-	No Report	-	NA	NA
Montenegro*	632 737	-	-	-	-	-	-	-	-	-	No Report	-	NA	NA
Netherlands	16 694 725	0.0	0	0	0	0	0	0	100%	100%	Feb	-	0.00	-
Norway	4 951 344	0.0	0	0	0	0	0	0	100%	100%	Feb	-	0.00	-
Poland	38 315 208	0.1	3	1	0	2	0	0	100%	100%	Feb	66.7%	0.00	100.0%
Portugal	10 686 443	0.0	1	1	0	0	0	1	100%	100%	Feb	100.0%	0.00	100.0%
Republic of Moldova	3 532 010	-	-	-	-	-	-	-	-	-	No Report	-	NA	NA
Romania	21 397 044	29.8	637	322	312	3	0	0	100%	100%	Feb	99.1%	NA	NA
Russian Federation	142 668 224	5.9	844	822	17	5	1	7	100%	100%	Feb	100.0%	NA	NA
San Marino	29 486	-	-	-	-	-	-	-	-	-	No Report	-	NA	NA
Serbia*	9 834 026	0.0	0	0	0	0	0	0	50%	50%	Jan	-	0.00	-
Slovakia	5 478 110	0.0	0	0	0	0	0	0	100%	100%	Feb	-	0.00	-
Slovenia	2 039 627	0.0	1	1	0	0	0	1	100%	100%	Feb	100.0%	0.00	100.0%
Spain	46 657 472	2.3	111	97	8	6	0	5	100%	100%	Feb	94.2%	NA	NA
Sweden	9 477 964	1.4	16	6	10	0	0	3	50%	50%	Feb	100.0%	NA	NA
Switzerland	7 723 812	0.5	5	5	0	0	5	1	100%	50%	Feb	80.0%	0.06	30.0%
Tajikistan*	7 086 101	0.0	0	0	0	0	0	0	50%	50%	Feb	-	0.00	-
The former Yugoslav Republic of Macedonia*	2 066 356	1.5	3	1	0	2	0	0	100%	100%	Feb	33.3%	NA	NA
Turkey	74 546 664	-	-	-	-	-	-	-	-	-	No Report	-	NA	NA
Turkmenistan	5 164 039	0.0	0	0	0	0	0	0	100%	100%	Feb	-	0.00	-
Ukraine*	44 991 932	51.3	2309	135	0	2174	0	0	50%	50%	Jan	5.8%	NA	NA
United Kingdom	62 806 776	1.3	84	84	0	0	0	3	100%	100%	Feb	100.0%	NA	NA
Uzbekistan*	28 124 854	-	-	-	-	-	-	-	-	-	No Report	-	NA	NA
Total/Averages	901 823 640	4.9	4463	1658	411	2394	11	39	77.4%	74.5%		42.4%	0.00	40.6%

Data source: Monthly aggregate and case-based data reported by Member States to WHO/Europe and ECDC/TESSy

¹ Source: "World Population Prospects: The 2008 Revision", New York, United Nations and updates provided by Member States.

² Cases with missing classification are classified as "Clinical".

³ Imported or import related measles cases included in total measles.

* Member States reporting aggregate measles data in year 2011

Indicators not meeting target and countries not reporting monthly measles data are highlighted in red; NA=Not Applicable; "-" = data not available or can not be calculated due to insufficient denominator.

Monthly Summary Table 3. Classification of reported suspected rubella cases, January–February 2012 (data as of 1 April 2012)

Country	Total Population ¹	Annualized Incidence Rate per 1 million population	Total confirmed Rubella	Classification				Importation ³	Reporting			Surveillance Indicators <small>(Please click here to refer Annex 8 of MR Surveillance guideline)</small>		
				Lab confirmed	Epi-Link	Clinical ²	Discarded		Completeness	Timeliness	Month of last report	Laboratory investigation rate	Detection rate	Source of infection
Albania	3 226 922	0.0	0	0	0	0	0	0	100%	100%	Feb	-	0.00	-
Andorra	67 726	0.0	0	0	0	0	0	0	100%	50%	Feb	-	0.00	-
Armenia	3 107 085	1.3	4	0	0	4	4	0	100%	100%	Feb	50.0%	NA	NA
Austria	8 418 180	0.0	0	0	0	0	0	0	100%	100%	Feb	-	0.00	-
Azerbaijan	9 417 527	0.0	0	0	0	0	1	0	100%	100%	Feb	100.0%	0.01	100.0%
Belarus	9 536 760	0.0	0	0	0	0	0	0	100%	100%	Feb	-	0.00	-
Belgium	10 770 406	0.0	0	0	0	0	0	0	50%	50%	Jan	-	0.00	-
Bosnia and Herzegovina	3 747 213	-	-	-	-	-	-	-	-	-	No Report	-	NA	NA
Bulgaria	7 401 269	0.0	0	0	0	0	0	0	100%	100%	Feb	-	0.00	-
Croatia	4 388 603	-	-	-	-	-	-	-	-	-	No Report	-	NA	NA
Cyprus	1 128 260	0.0	0	0	0	0	0	0	100%	100%	Feb	-	0.00	-
Czech Republic	10 547 860	0.0	0	0	0	0	0	0	100%	100%	Feb	-	0.00	-
Denmark	5 589 464	0.0	0	0	0	0	0	0	100%	100%	Feb	-	0.00	-
Estonia	1 339 829	0.0	0	0	0	0	0	0	100%	100%	Feb	-	0.00	-
Finland	5 397 248	0.0	0	0	0	0	0	0	100%	100%	Feb	-	0.00	-
France	63 417 636	0.0	0	0	0	0	0	0	50%	50%	Jan	-	0.00	-
Georgia	4 305 661	3.7	16	2	0	14	0	0	100%	100%	Feb	0.0%	NA	NA
Germany	81 964 400	0.0	0	0	0	0	0	0	50%	50%	Jan	-	0.00	-
Greece	11 418 997	0.0	0	0	0	0	0	0	100%	100%	Feb	-	0.00	-
Hungary	9 947 105	0.0	1	1	0	0	0	1	100%	100%	Feb	100.0%	0.00	100.0%
Iceland	327 804	-	-	-	-	-	-	-	-	-	No Report	-	NA	NA
Ireland	4 579 823	0.0	0	0	0	0	0	0	100%	100%	Feb	-	0.00	-
Israel	7 672 910	0.0	0	0	0	0	0	0	100%	100%	Feb	-	0.00	-
Italy	60 819 728	0.0	0	0	0	0	0	0	50%	50%	Jan	-	0.00	-
Kazakhstan	16 407 491	0.2	4	2	2	0	0	0	100%	100%	Feb	0.0%	0.00	0.0%
Kyrgyzstan	5 463 941	-	-	-	-	-	-	-	-	-	No Report	-	NA	NA
Latvia	2 233 986	0.0	0	0	0	0	0	0	100%	100%	Feb	-	0.00	-
Lithuania	3 296 148	0.0	0	0	0	0	0	0	50%	50%	Feb	-	0.00	-
Luxembourg	521 080	0.0	0	0	0	0	0	0	50%	50%	Jan	-	0.00	-
Malta	419 402	0.0	0	0	0	0	0	0	100%	100%	Feb	-	0.00	-
Monaco	38 222	-	-	-	-	-	-	-	-	-	No Report	-	NA	NA
Montenegro	632 737	-	-	-	-	-	-	-	-	-	No Report	-	NA	NA
Netherlands	16 694 725	0.0	0	0	0	0	0	0	100%	100%	Feb	-	0.00	-
Norway	4 951 344	0.0	0	0	0	0	0	0	50%	50%	Jan	-	0.00	-
Poland	38 315 208	0.0	0	0	0	0	0	0	100%	100%	Feb	-	0.00	-
Portugal	10 686 443	0.0	0	0	0	0	0	0	100%	100%	Feb	-	0.00	-
Republic of Moldova	3 532 010	-	-	-	-	-	-	-	-	-	No Report	-	NA	NA
Romania	21 397 044	229.1	4901	836	4065	0	0	0	100%	100%	Feb	73.6%	NA	NA
Russian Federation	142 668 224	1.3	185	176	1	8	0	0	100%	100%	Feb	6.0%	NA	NA
San Marino	29 486	-	-	-	-	-	-	-	-	-	No Report	-	NA	NA
Serbia	9 834 026	-	-	-	-	-	-	-	-	-	No Report	-	NA	NA
Slovakia	5 478 110	0.0	0	0	0	0	0	0	100%	100%	Feb	-	0.00	-
Slovenia	2 039 627	0.0	0	0	0	0	0	0	100%	100%	Feb	-	0.00	-
Spain	46 657 472	0.1	4	4	0	0	0	1	100%	100%	Feb	100.0%	0.00	75.0%
Sweden	9 477 964	-	-	-	-	-	-	-	-	-	No Report	-	NA	NA
Switzerland	7 723 812	-0.1	0	0	0	0	7	1	100%	100%	Feb	85.7%	0.09	28.6%
Tajikistan	7 086 101	0.0	0	0	0	0	0	0	50%	50%	Feb	-	0.00	-
The former Yugoslav Republic of Macedonia	2 066 356	0.5	1	0	0	1	0	0	100%	100%	Feb	0.0%	0.00	0.0%
Turkey	74 546 664	-	-	-	-	-	-	-	-	-	No Report	-	NA	NA
Turkmenistan	5 164 039	0.0	0	0	0	0	0	0	100%	50%	Feb	-	0.00	-
Ukraine	44 991 932	-	-	-	-	-	-	-	-	-	No Report	-	NA	NA
United Kingdom	62 806 776	0.2	13	13	0	0	0	2	100%	100%	Feb	100.0%	0.00	92.3%
Uzbekistan	28 124 854	-	-	-	-	-	-	-	-	-	No Report	-	NA	NA
Total/Averages	901 823 640	5.7	5129	1034	4068	27	12	5	67.9%	66.0%		61.0%	0.00	96.0%

Data source: Monthly aggregate and case-based data reported by Member States to WHO/Europe and ECDC/TESSy

¹ Source: "World Population Prospects: The 2008 Revision", New York, United Nations and updates provided by Member States.

² Cases with missing classification are classified as "Clinical".

³ Imported or import related rubella cases included in total rubella.

Indicators not meeting target and countries not reporting monthly rubella data are highlighted in red. "-" indicates data not available/applicable or can not be calculated due to insufficient denominator.

Monthly Summary Table 4. Measles and rubella laboratory test results, January – February 2012 (data as of 1 April 2012)

Country	Specimen* (Serum, Oral Fluid, Swab, Urine and other)								Reporting		
	Tested for measles	Positive for measles (%)	Measles Equivocal	Negative for measles	Tested for rubella	Positive for rubella (%)	Rubella Equivocal	Negative for rubella	% Completeness	% Timeliness	Month of last report
Albania	2	0 (0.0)	0	2	0	0	0	0	100.0%	50.0%	Feb
Andorra											No Lab
Armenia	5	0 (0.0)	0	5	5	0 (0.0)	0	5	100.0%	100.0%	Feb
Austria	193	3 (2.0)	0	190	879	3 (0.0)	0	876	100.0%	100.0%	Feb
Azerbaijan	15	0 (0.0)	0	15	15	1 (7.0)	0	14	50.0%	50.0%	Jan
Belarus	77	12 (16.0)	0	65	66	0 (0.0)	0	66	100.0%	100.0%	Feb
Belgium	39	11 (28.0)	0	27	16	4 (25.0)	3	7	100.0%	100.0%	Feb
Bosnia and Herzegovina											No Report
Bulgaria	15	1 (7.0)	0	14	15	1 (7.0)	0	14	100.0%	50.0%	Feb
Croatia	0	0	0	0	0	0	0	0	100.0%	100.0%	Feb
Cyprus	1	1 (100.0)	0	0	0	0	0	0	100.0%	100.0%	Feb
Czech Republic	17	5 (29.0)	0	12	7	0 (0.0)	0	7	100.0%	100.0%	Feb
Denmark	54	5 (9.0)	1	48	38	0 (0.0)	2	36	50.0%	0.0%	Jan
Estonia	5	0 (0.0)	0	5	85	1 (1.0)	0	84	100.0%	100.0%	Feb
Finland	136	6 (4.0)	0	130	121	2 (2.0)	0	119	100.0%	100.0%	Feb
France	76	20 (26.0)	1	55	0	0	0	0	50.0%	50.0%	Jan
Georgia	23	0 (0.0)	1	22	24	2 (8.0)	4	18	100.0%	50.0%	Feb
Germany	40	3 (8.0)	1	36	3	0 (0.0)	0	3	100.0%	100.0%	Feb
Greece	1	0 (0.0)	0	1	32	6 (19.0)	0	26	100.0%	50.0%	Feb
Hungary	8	0 (0.0)	0	8	81	1 (1.0)	0	80	100.0%	100.0%	Feb
Iceland	11	0 (0.0)	0	11	13	2 (15.0)	0	11	100.0%	50.0%	Feb
Ireland	76	4 (5.0)	5	67	283	1 (0.0)	1	281	100.0%	50.0%	Feb
Israel	60	2 (3.0)	0	58	187	25 (13.0)	0	162	100.0%	100.0%	Feb
Italy											No Report
Kazakhstan	23	12 (52.0)	0	11	56	4 (7.0)	1	51	100.0%	100.0%	Feb
Kyrgyzstan	53	0 (0.0)	0	53	53	2 (4.0)	1	50	100.0%	100.0%	Feb
Latvia	37	0 (0.0)	0	37	37	0 (0.0)	1	36	50.0%	50.0%	Jan
Lithuania	2	0 (0.0)	2	0	1	0 (0.0)	0	1	100.0%	100.0%	Feb
Luxembourg	14	0 (0.0)	0	14	7	0 (0.0)	1	6	100.0%	100.0%	Feb
Malta	4	0 (0.0)	0	4	201	1 (0.0)	0	200	100.0%	50.0%	Feb
Monaco											No Lab
Montenegro											No Lab
Netherlands											No Report
Norway	9	0 (0.0)	0	9	5	0 (0.0)	0	5	100.0%	100.0%	Feb
Poland	35	1 (3.0)	2	32	10	0 (0.0)	0	10	100.0%	100.0%	Feb
Portugal	8	3 (38.0)	0	5	0	0	0	0	100.0%	100.0%	Feb
Republic of Moldova	20	10 (50.0)	0	10	20	1 (5.0)	0	19	100.0%	100.0%	Feb
Romania	1964	770 (39.0)	20	1174	3904	2440 (63.0)	73	1391	100.0%	100.0%	Feb
Russian Federation	2117	1031 (49.0)	0	1086	1171	189 (16.0)	2	980	100.0%	100.0%	Feb
San Marino											No Lab
Serbia	3	0 (0.0)	0	3	12	0 (0.0)	0	12	100.0%	50.0%	Feb
Slovakia	5	1 (20.0)	0	4	2	0 (0.0)	0	2	100.0%	50.0%	Feb
Slovenia	7	3 (43.0)	0	4	2	0 (0.0)	0	2	100.0%	100.0%	Feb
Spain											No Report
Sweden											No Report
Switzerland	4	4 (100.0)	0	0	2	2 (100.0)	0	0	100.0%	100.0%	Feb
Tajikistan											No Report
The former Yugoslav Republic of Macedonia	0	0	0	0	1	0 (0.0)	0	1	50.0%	0.0%	Jan
Turkey	478	3 (1.0)	4	471	478	13 (3.0)	13	452	100.0%	100.0%	Feb
Turkmenistan	8	0 (0.0)	0	8	8	0 (0.0)	0	8	100.0%	100.0%	Feb
Ukraine	262	167 (64.0)	3	92	150	31 (21.0)	0	119	100.0%	100.0%	Feb
United Kingdom	1011	173 (17.0)	0	838	237	20 (8.0)	0	217	100.0%	100.0%	Feb
Uzbekistan	4	0 (0.0)	0	4	4	0 (0.0)	0	4	100.0%	100.0%	Feb
Total / Average	6922	2251 (33%)	40	4630	8231	2752 (33%)	102	5375	88.0%	76.1%	

*Specimen based data are not population based, and should not be interpreted as indicators for epidemiological surveillance. Laboratories may have received more than 1 clinical sample or may have conducted more than 1 test for a given case reported in Table 1.

Data source: Aggregated monthly data provided by regional measles and rubella laboratory network.

Table 5: Classification of AFP cases, surveillance performance weeks and weekly reporting to WHO EURO by country, 2011-2012, WHO European Region

Countries	2011 (1-53 weeks)											2012 (1-12 weeks)													
	AFP Cases ¹	AFP cases under 15 year of age	Hot AFP Cases ²	Classification					Rates			AFP Cases ¹	AFP cases under 15 years of age	Hot AFP Cases ²	Classification					Rates			Reporting		
				Polio Compatible	Pending	Discarded	Wild Polio cases	VDPV/VAPP	Non polio AFP rate ³	Adequate Stool collection	Surv. Index ⁵				Polio Compatible	Pending	Discarded	Wild Polio cases	VDPV/VAPP	Non polio AFP rate ³	Adequate Stool collection	Surv. Index ⁵	% Completeness	% Timeliness	Week of last report
Albania	4	4	0	0	0	4	0	0	0.56	100.0	0.56	2	2	0	0	0	0	0	0.00	100.0	0.0	76.0	83.0	11	
Andorra	0	0	0	0	0	0	0	0	0.00	0.0	0.00	0	0	0	0	0	0	0	0.00	0.0	0.0	69.0	16.0	9	
Armenia	21	21	1	0	0	21	0	0	3.37	90.5	0.90	7	7	0	0	7	0	0	0.00	100.0	0.0	100.0	108.0	13	
Austria	2	2	0	0	0	2	0	0	0.16	0.0	0.08	1	1	0	0	1	0	0	0.00	0.0	0.0	92.0	58.0	12	
Azerbaijan	37	37	0	0	0	37	0	0	1.88	97.3	1.00	6	6	0	0	6	0	0	0.00	100.0	0.0	84.0	91.0	12	
Belarus	46	46	3	0	0	46	0	0	3.18	78.3	0.85	16	16	1	0	16	0	0	0.00	87.5	0.0	23.0	25.0	11	
Belgium	3	3	0	0	0	3	0	0	0.17	0.0	0.00	2	2	0	0	0	2	0	0	0.48	0.0	0.0	76.0	16.0	11
Bosnia and Herzegovina	7	7	1	0	6	1	0	0	0.18	42.9	0.13	0	0	0	0	0	0	0	0.00	0.0	0.0	38.0	25.0	8	
Bulgaria	13	13	0	0	11	2	0	0	0.19	92.3	0.19	3	3	0	0	3	0	0	0.00	100.0	0.0	84.0	91.0	12	
Croatia	0	0	0	0	0	0	0	0	0.00	0.0	0.00	0	0	0	0	0	0	0	0.00	0.0	0.0	76.0	33.0	11	
Cyprus	4	4	0	0	0	4	0	0	2.05	100.0	1.00	2	2	0	0	0	2	0	0	4.46	100.0	1.0	69.0	75.0	12
Czech Republic	8	8	0	0	0	8	0	0	0.54	75.0	0.47	0	0	0	0	0	0	0	0.00	0.0	0.0	92.0	91.0	12	
Estonia	0	0	0	0	0	0	0	0	0.00	0.0	0.00	0	0	0	0	0	0	0	0.00	0.0	0.0	84.0	91.0	12	
Georgia	10	10	1	0	0	9	0	1	1.26	100.0	1.00	4	4	1	0	4	0	0	0.00	100.0	0.0	92.0	100.0	12	
Greece	24	24	2	0	0	24	0	0	1.43	79.2	0.92	5	5	0	0	5	0	0	0.00	80.0	0.0	92.0	100.0	12	
Hungary	7	7	0	0	0	7	0	0	0.48	28.6	0.21	4	4	0	0	2	2	0	0	0.59	75.0	0.4	100.0	75.0	13
Ireland	7	7	0	0	0	7	0	0	0.72	14.3	0.31	0	0	0	0	0	0	0	0.00	0.0	0.0	53.0	25.0	7	
Israel	18	17	0	0	1	17	0	0	0.82	17.6	0.34	2	2	0	0	0	2	0	0	0.41	0.0	0.2	84.0	83.0	12
Italy	64	63	1	0	3	61	0	0	0.71	65.1	0.49	10	10	0	0	10	0	0	0.00	60.0	0.0	46.0	16.0	10	
Kazakhstan*	101	101	1	0	18	83	0	0	2.05	97.0	0.98	11	11	0	0	9	2	0	0	0.21	100.0	0.2	92.0	83.0	12
Kyrgyzstan	68	65	2	0	0	68	0	0	4.19	100.0	1.00	8	8	0	0	5	3	0	0	0.80	100.0	0.8	38.0	41.0	12
Latvia	0	0	0	0	0	0	0	0	0.00	0.0	0.00	1	1	0	0	1	0	0	0.00	100.0	0.0	76.0	58.0	12	
Lithuania	10	10	0	0	0	10	0	0	2.04	100.0	1.00	0	0	0	0	0	0	0	0.00	0.0	0.0	92.0	100.0	12	
Malta	0	0	0	0	0	0	0	0	0.00	0.0	0.00	0	0	0	0	0	0	0	0.00	0.0	0.0	61.0	8.0	9	
Montenegro	3	3	0	0	0	3	0	0	2.49	66.7	1.00	0	0	0	0	0	0	0	0.00	0.0	0.0	76.0	83.0	12	
Norway	11	11	0	0	7	4	0	0	0.44	9.1	0.28	1	1	0	0	1	0	0	0.00	0.0	0.0	84.0	16.0	12	
Poland	37	37	3	0	6	31	0	0	0.55	75.7	0.47	9	9	2	0	8	1	0	0	0.08	0.0	0.0	69.0	58.0	10
Portugal	10	9	1	0	0	10	0	0	0.63	44.4	0.56	0	0	0	0	0	0	0	0.00	0.0	0.0	46.0	8.0	6	
Republic of Moldova	8	8	0	0	0	8	0	0	1.35	100.0	1.00	0	0	0	0	0	0	0	0.00	0.0	0.0	84.0	83.0	11	
Romania	18	18	0	0	0	18	0	0	0.55	100.0	0.55	4	4	0	0	4	0	0	0.00	100.0	0.0	100.0	91.0	13	
Russian Federation*	360	358	33	0	0	360	0	0	1.65	92.7	0.95	88	87	13	0	81	7	0	0	0.14	93.1	0.1	92.0	100.0	12
Serbia	10	10	1	0	4	6	0	0	0.35	90.0	0.35	3	3	0	0	2	1	0	0	0.25	66.7	0.2	84.0	91.0	12
Slovakia	2	2	0	0	0	2	0	0	0.24	100.0	0.24	0	0	0	0	0	0	0	0.00	0.0	0.0	76.0	41.0	11	
Slovenia	0	0	0	0	0	0	0	0	0.00	0.0	0.00	0	0	0	0	0	0	0	0.00	0.0	0.0	92.0	83.0	13	
Spain	34	34	0	0	0	34	0	0	0.49	38.2	0.31	6	6	0	0	6	0	0	0.00	33.3	0.0	100.0	41.0	13	
Switzerland	6	3	0	0	0	6	0	0	0.52	66.7	0.34	1	1	0	0	0	1	0	0	0.37	0.0	0.4	61.0	25.0	12
Tajikistan*	55	52	0	0	0	55	0	0	2.16	96.2	0.96	13	13	0	0	13	0	0	0.00	92.3	0.0	53.0	58.0	12	
The former Yugoslav Republic of Macedonia	2	2	1	0	0	2	0	0	0.56	100.0	0.56	1	1	0	0	1	0	0	0.00	100.0	0.0	76.0	75.0	11	
Turkey	197	196	3	0	0	240	0	1	0.96	80.6	0.84	28	28	0	0	9	19	0	0	0.43	82.1	0.4	46.0	50.0	12
Turkmenistan*	33	33	0	0	4	29	0	0	1.98	100.0	1.00	6	6	0	0	6	0	0	0.00	100.0	0.0	30.0	33.0	12	
Ukraine	127	127	31	0	0	125	0	2	1.92	97.6	1.00	27	26	8	0	27	0	0	0.00	92.3	0.0	76.0	83.0	12	
Uzbekistan	200	197	4	0	0	200	0	0	2.49	96.4	0.96	19	19	0	0	19	0	0	0.00	100.0	0.0	69.0	75.0	12	
Average/Total	1567	1549	89	0	60	1547	0	4	1.63	86.00	0.89	290	288	25	0	248	42	0	0	1.18	87.00	0.9	76.0	57.0	

¹ AFP case of all ages (Denmark, Finland, France, Iceland, Luxembourg, Monaco, Netherlands, San Marino, Sweden and United Kingdom do not report AFP cases. High quality surveillance (e.g. enterovirus and/or environmental) to detect poliovirus exists in Member States with no AFP surveillance.

² Hot cases = AFP case reported with a priority code (e.g. less than three doses of polio vaccine/Clinically polio/Recent travel to endemic country/high risk group).

³ Non-polio AFP cases per 100 000 children under the age of 15 years (annualized for current year). Number of non-polio (discarded) AFP cases X 100000 / total population under 15 years.

⁴ two stool specimens collected 24-48 hours apart within 14 days of the onset of paralysis

⁵ Surveillance Index = non-polio AFP rate up to 1.0 x (% AFP cases with atleast 1 adequate specimens within 14 days of onset).

*Countries experiencing a wild poliovirus outbreak in 2010. Nonpolio AFP Rate and Surveillance Index targets for these member states have been revised to 2.0 and 1.6 respectively.