

Best viewed using Chrome, Safari or Internet Explorer 9 or higher. If you are having trouble viewing this page please click here for the alternative viewer.

Key points

Week 26/2020 (22 - 28 Jun 2020)

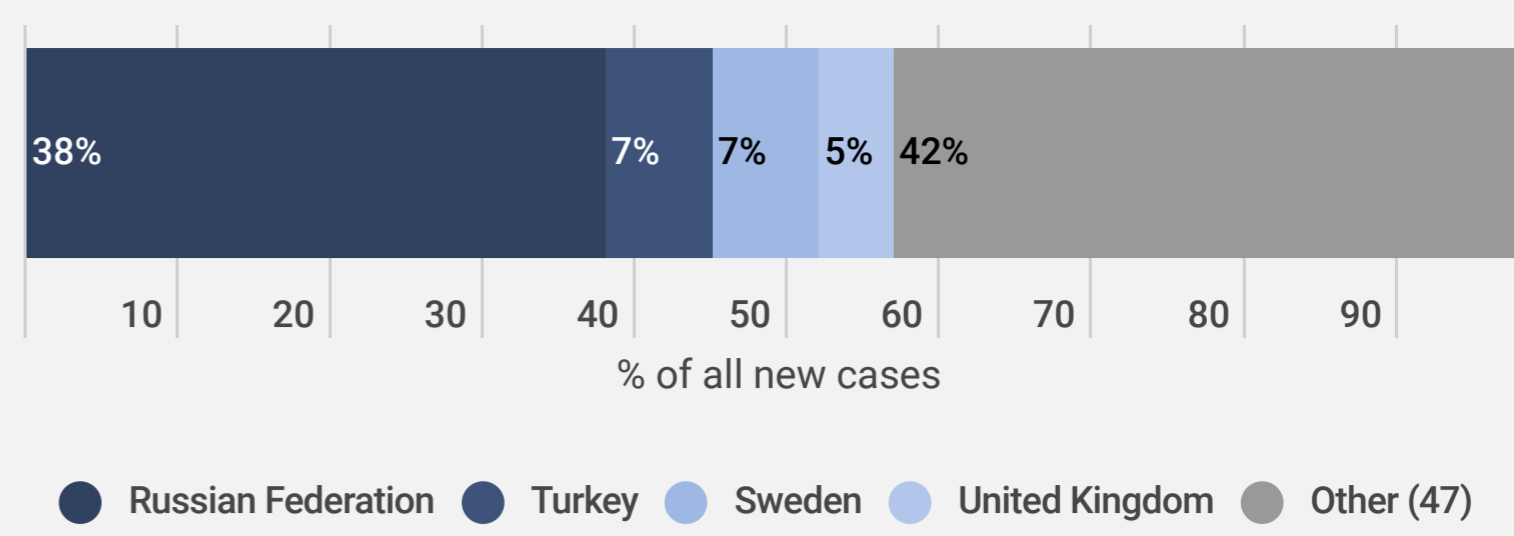
- The overall number of cases reported in the Region has declined by 50% since week 14/2020; the overall number of deaths has declined by 87% in the same time period.
- 58% (75,381) of the cases in week 26/2020 were reported from four countries: the Russian Federation (38%; 49,757), Turkey (7%; 9,390), Sweden (7%; 9,094) and the United Kingdom (5.5%; 7,140). The remaining cases (42%; 54,911) were reported by 47 countries and territories; each accounted for <5% of the total cases reported in week 26/2020
- Five countries had a crude incidence of ≥ 35 per 100,000 in week 26/2020: Armenia, Sweden, Republic of Moldova, North Macedonia and Azerbaijan. The crude incidence continues to vary across the region with a range from 0.2 per 100,000 population in Latvia to 148 per 100,000 population in Armenia.
- In 28 countries, the 14-day cumulative incidence increased by $\geq 10\%$ in week 26/2020, however for some countries data was retro-adjusted by national authorities: Albania, Austria, Azerbaijan, Bosnia and Herzegovina, Bulgaria, Croatia, Czech Republic, France, Germany, Greece, Iceland, Israel, Kazakhstan, Kyrgyzstan, Luxembourg, Montenegro, Norway, Republic of Moldova, Romania, San Marino, Serbia, Slovakia, Slovenia, Spain, Switzerland, Turkey, Ukraine and Uzbekistan (see [EURO COVID-19 Dashboard](#) for recent trends)
- 61% of the deaths reported in week 26/2020 were reported from the Russian Federation (28%; 962), the United Kingdom (27%; 925) and Sweden (7%; 227). The remaining deaths (39%; 1348) were reported from 37 countries; each accounted for <5% of the total deaths reported in week 26/2020
- The proportion of reported cases that died decreased from 3.9% in week 25/2020 to 2.7% in week 26/2020, a change that is likely due to a range of factors
- The number of countries and territories (27) reporting community-transmission has decreased since week 25/2020 (29) (see [EURO COVID-19 Dashboard](#))
- Since the emergence of COVID-19 virus in Europe at the end of January 2020, a wide range of public health and social measures (PHSM) have been implemented. See [EURO COVID-19 Dashboard](#) (NPI Explorer) for a snapshot of the temporal relationship between case and death numbers and the introduction and easing of these measures in some countries in the Region. A number of countries have recently started gradual easing of these measures. Continued vigilance is recommended as countries in the Region ease these measures.

Summary overview

- As of 17 June 2020, 11 countries in the European region had an effective reproductive number significantly over 1: Armenia*, Azerbaijan*, Croatia*, Czech Republic*, Germany*, Israel*, Kazakhstan, Kyrgyzstan, Serbia*, Sweden and Ukraine (* increase since last update on 11 June 2020) (See [EpiForecasts](#) and the [CMMID COVID working group COVID-19 Global Summary](#) for latest estimates)
- Ten countries in the Region each reported a cumulative incidence of ≥ 500 cases per 100,000 population: San Marino, Andorra, Armenia, Luxembourg, Sweden, Belarus, Iceland, Spain, Belgium and Ireland
- As of week 26/2020, 75% of cumulative cases (1,985,610) were reported from the Russian Federation (24%; 634,437), United Kingdom (12%; 310,250), Spain (9%; 248,469), Italy (9%; 240,136), Turkey (7%; 195,883), Germany (7%; 193,499) and France (6%; 162,936). The remaining cases (25%; 678,067) were reported by 47 countries; each accounted for <5% of the total cases reported until week 26/2020
- 21% of all reported infections with information available were in a health care worker
- 76% of all ICU admissions were in persons aged 50-79 years of age, with 70% of all ICU admissions in men
- As of week 26/2020, 69% of cumulative deaths (136,349) were reported from the United Kingdom (22%; 43,514), Italy (18%; 34,716), France (15%; 29,778), Spain (14%; 28,341). The remaining deaths (30.1%; 60,273) were reported by 49 countries; each accounted for <5% of the total cases reported until week 26/2020
- 89% of all deaths were in persons aged ≥ 65 years and 57% of all deaths were in men
- 95% of all deaths with information available had at least one underlying condition, with cardiovascular disease the leading comorbidity (66%)
- Following a period of a very substantial excess mortality observed in some countries coinciding with the COVID-19 pandemic, pooled estimates of all-cause mortality for the countries in the EuroMOMO network have now returned to normal levels. A few countries are still seeing some excess mortality. Excess mortality was observed primarily in the age group of ≥ 65 years, followed by the age group of 45-64 years and 15-44 years
- Due to technical issues, the TESSy data for week 26/2020 was not available at time of publication. In week 25, one country reported 16 tests and 0 COVID-19 detections in persons with influenza-like illness in primary care sentinel surveillance. The updated positivity rate in week 24/2020 was 2.9% (5 countries) compared to 9.1% (7 countries) in week 23/2020. The highest positivity was 19%, seen in week 15/2020

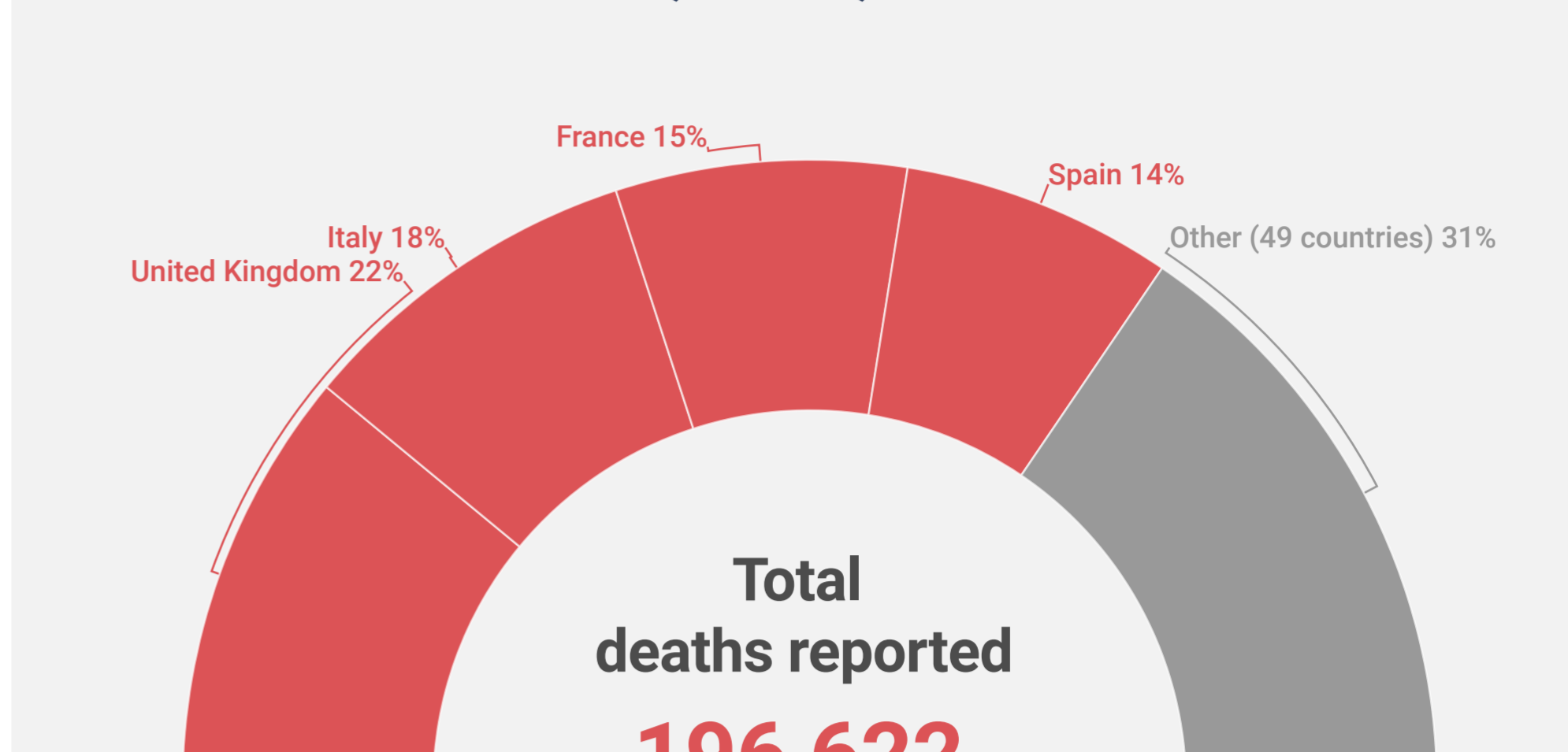
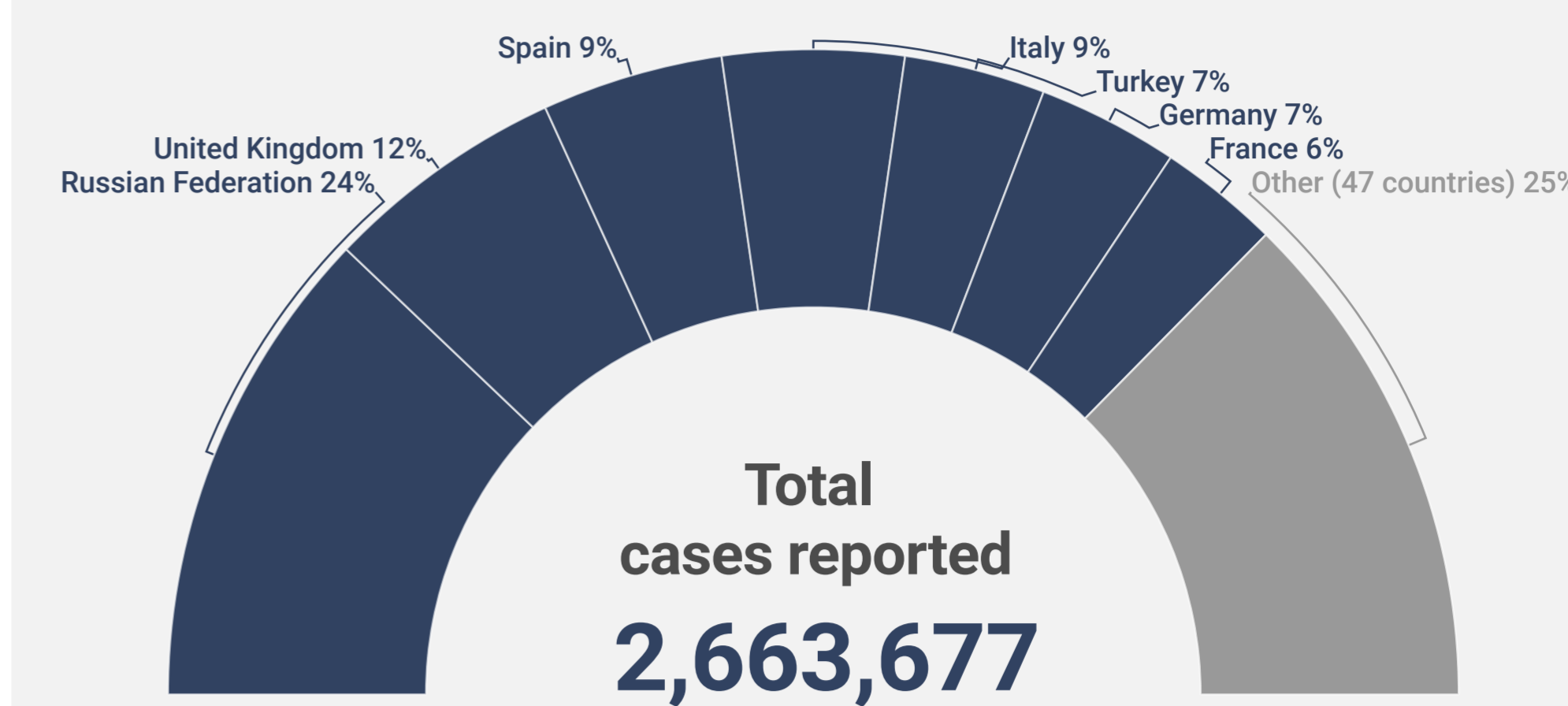
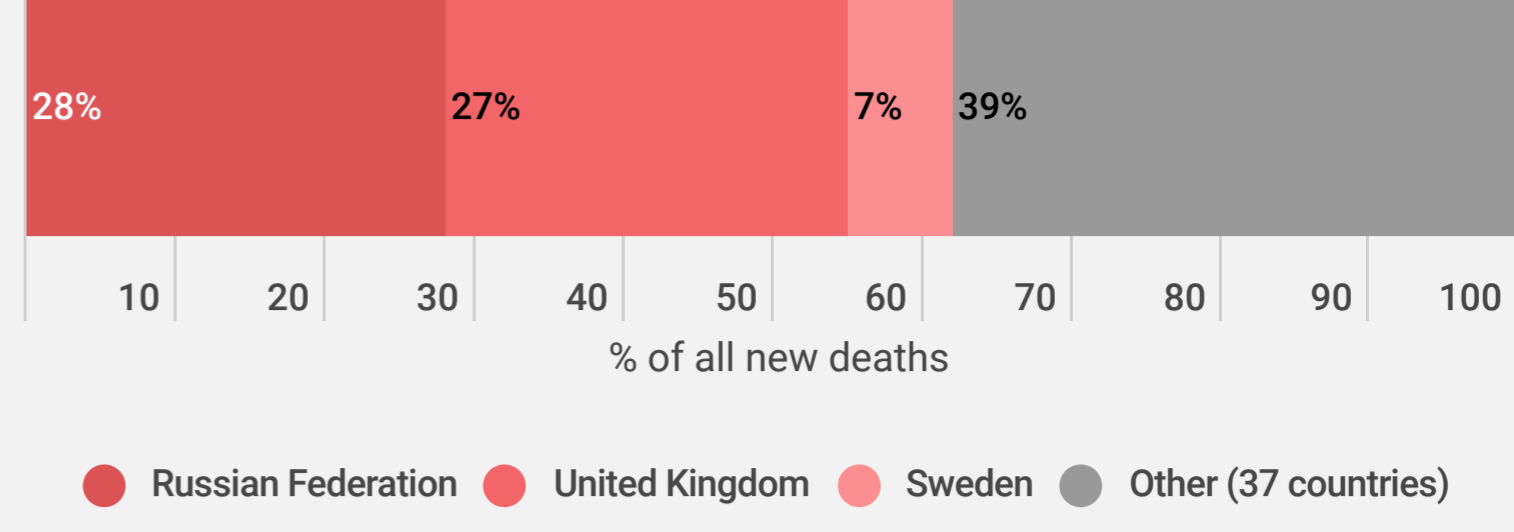
New cases Epi week 26

130,292



New deaths Epi week 26

3,462



- 21% of all people infected were health care workers
- 95% of all deaths had at least 1 underlying condition
- 57% of all deaths were in men
- 76% of all ICU admissions were people aged 50-79 years
- 89% of all deaths were in persons aged 65+
- 66% of all deaths had cardiovascular disease

For more detailed information see: [WHO Global situation reports](#) [WHO Global situation dashboard](#)

Figure 1: Number of COVID-19 cases (N=2,663,677) and deaths (N=196,622) by reporting week

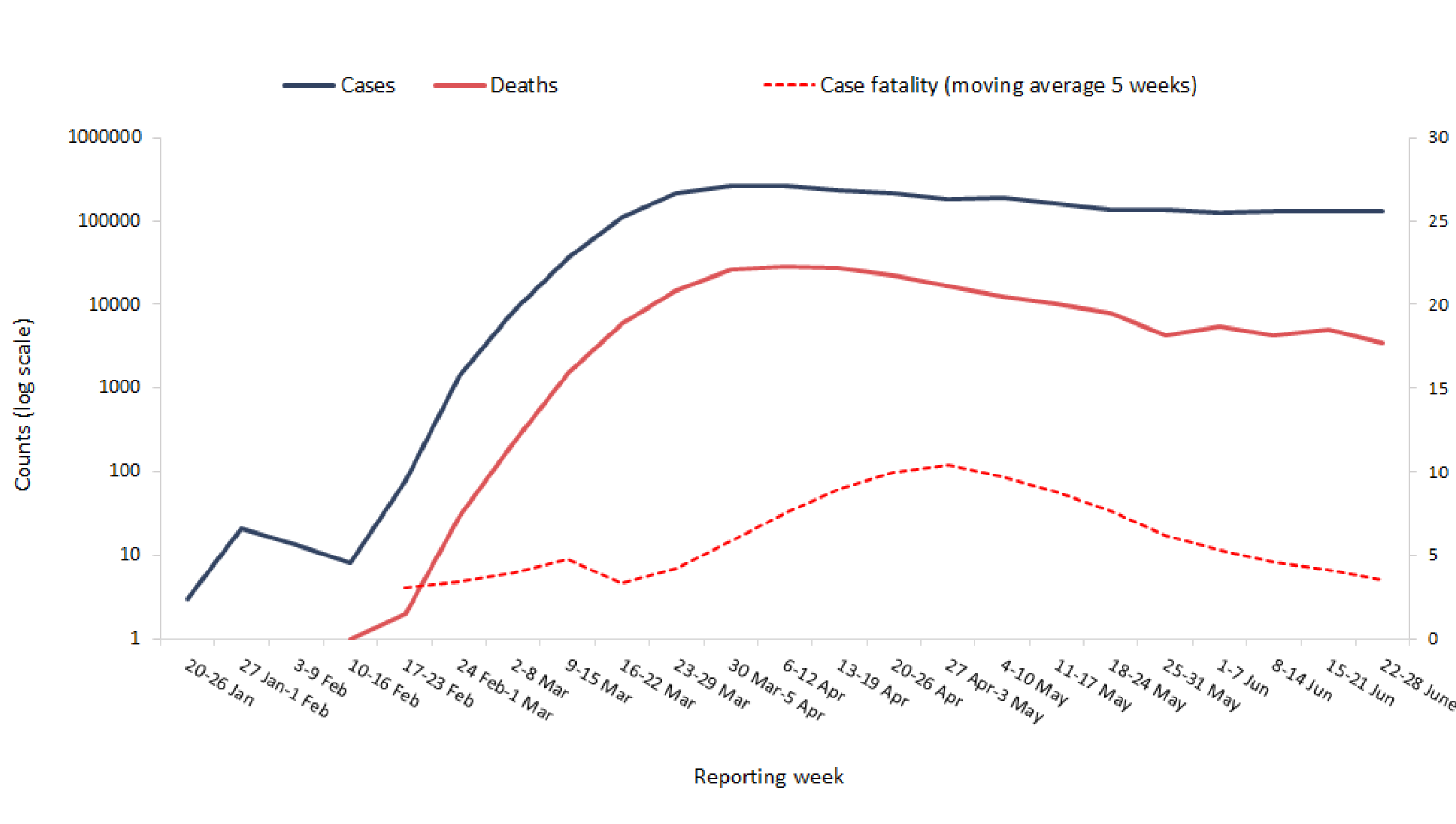
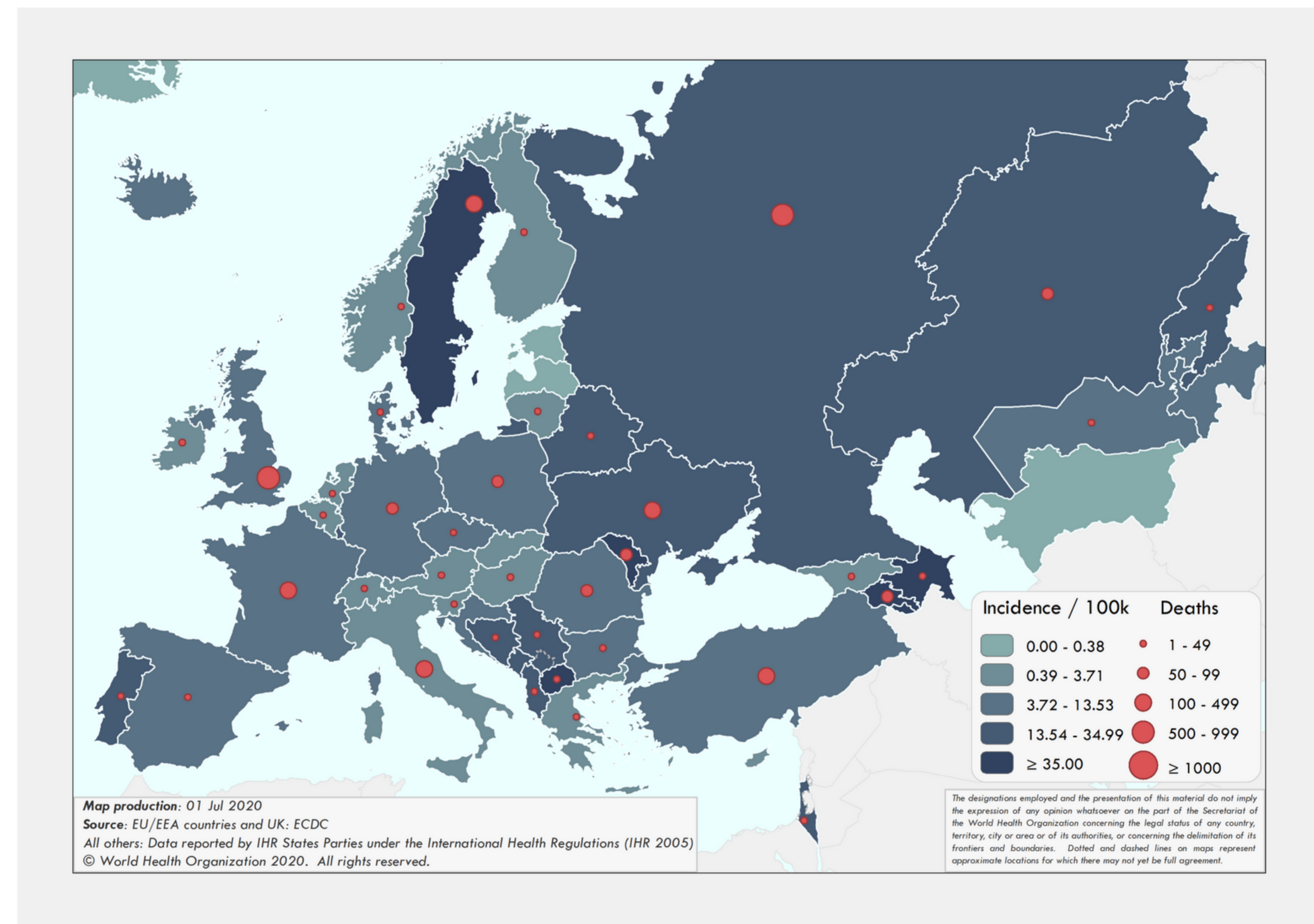
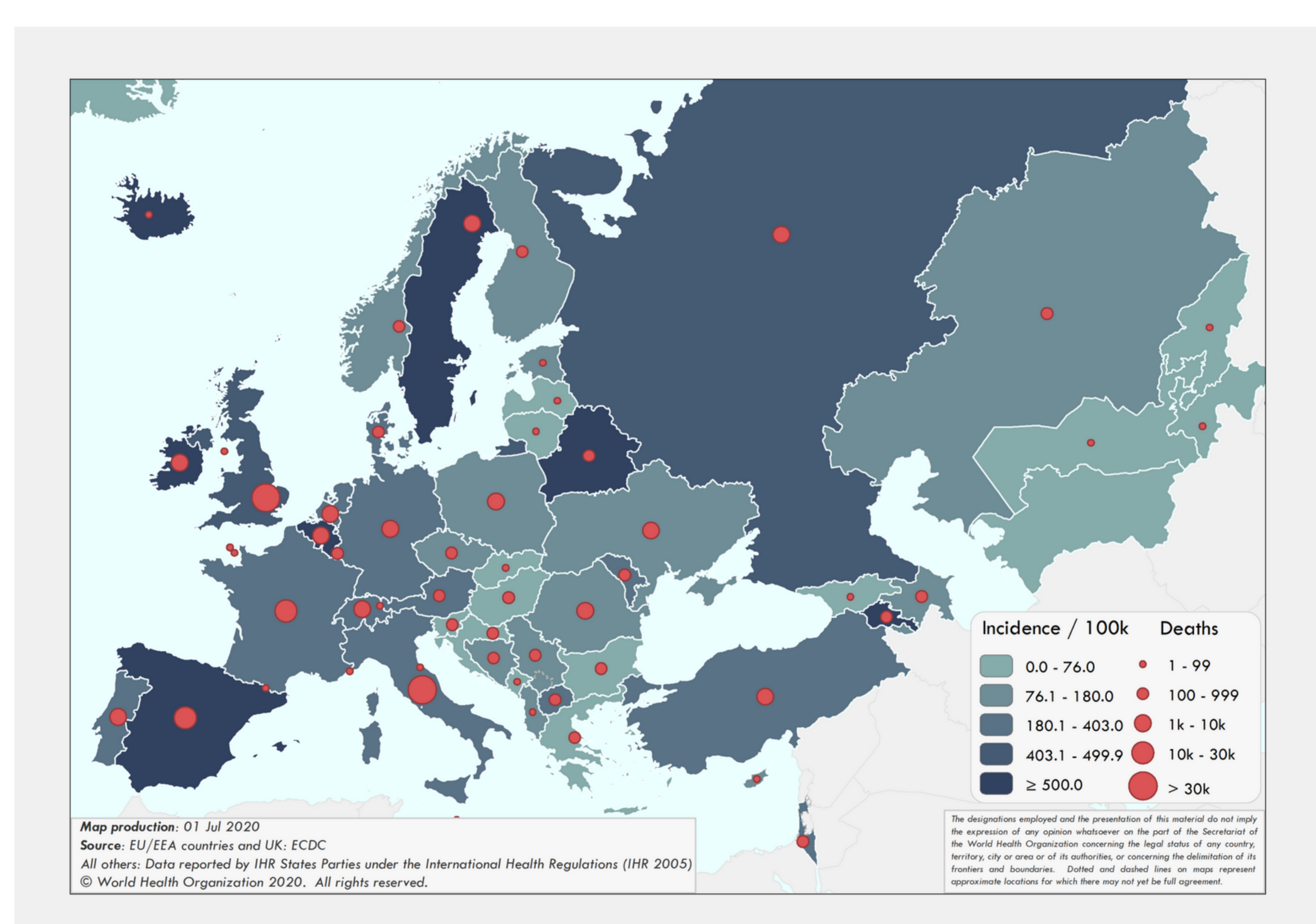


Figure 2A. COVID-19 incidence per 100,000 population and number of deaths by country for week 26



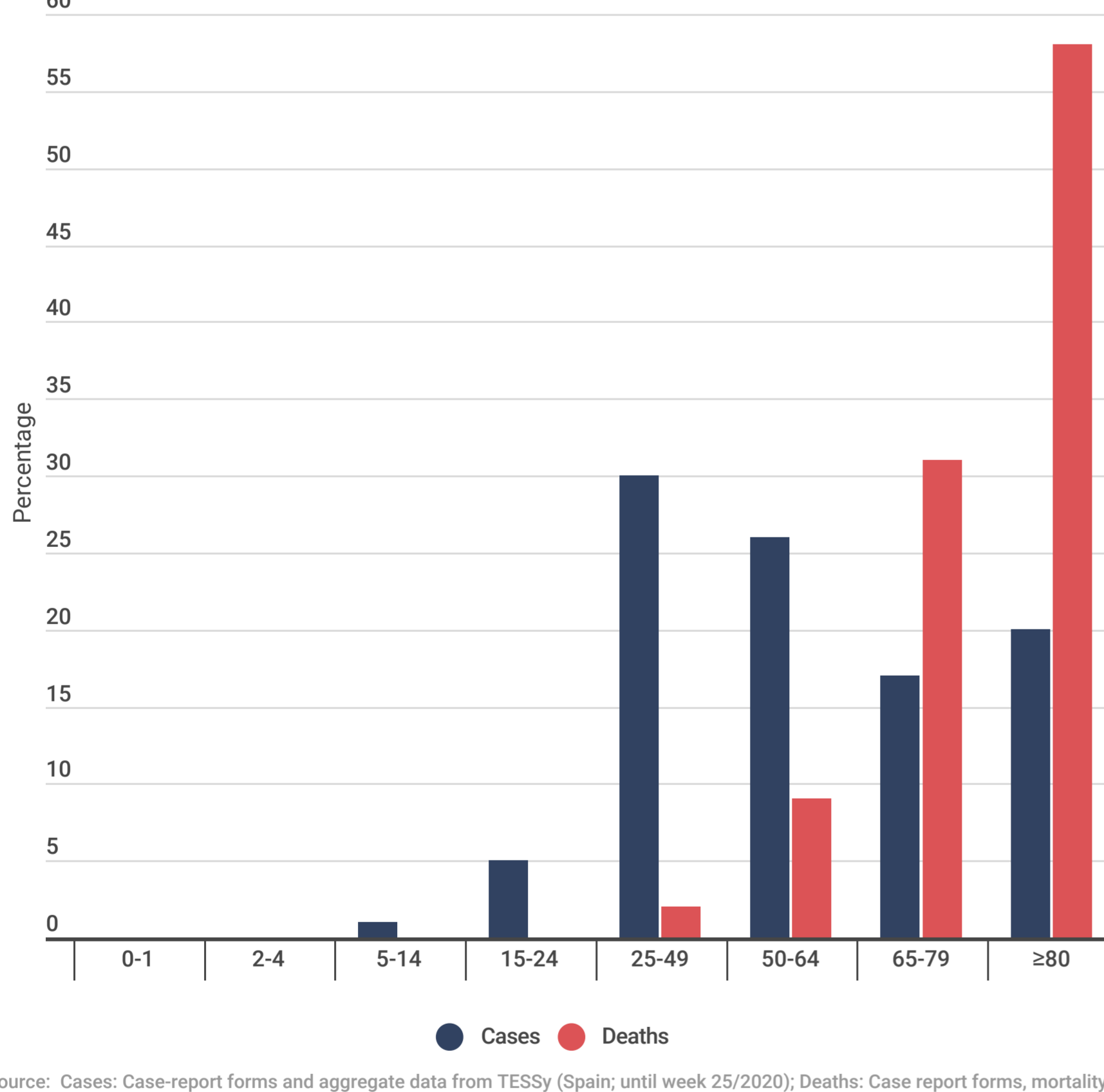
The designations employed and the presentation of the information in this Web site do not imply the expression of any opinion whatsoever on the part of the Secretariat of the World Health Organization concerning the legal status of any country, territory, city or area or of its authorities, or concerning the delimitation of its frontiers or boundaries.

Figure 2B. COVID-19 cumulative incidence per 100,000 population and number of deaths by country



The designations employed and the presentation of the information in this Web site do not imply the expression of any opinion whatsoever on the part of the Secretariat of the World Health Organization concerning the legal status of any country, territory, city or area or of its authorities, or concerning the delimitation of its frontiers or boundaries.

Figure 3. Percentage of COVID-19 cases (N=801,082) and deaths (N=119,391) by age group



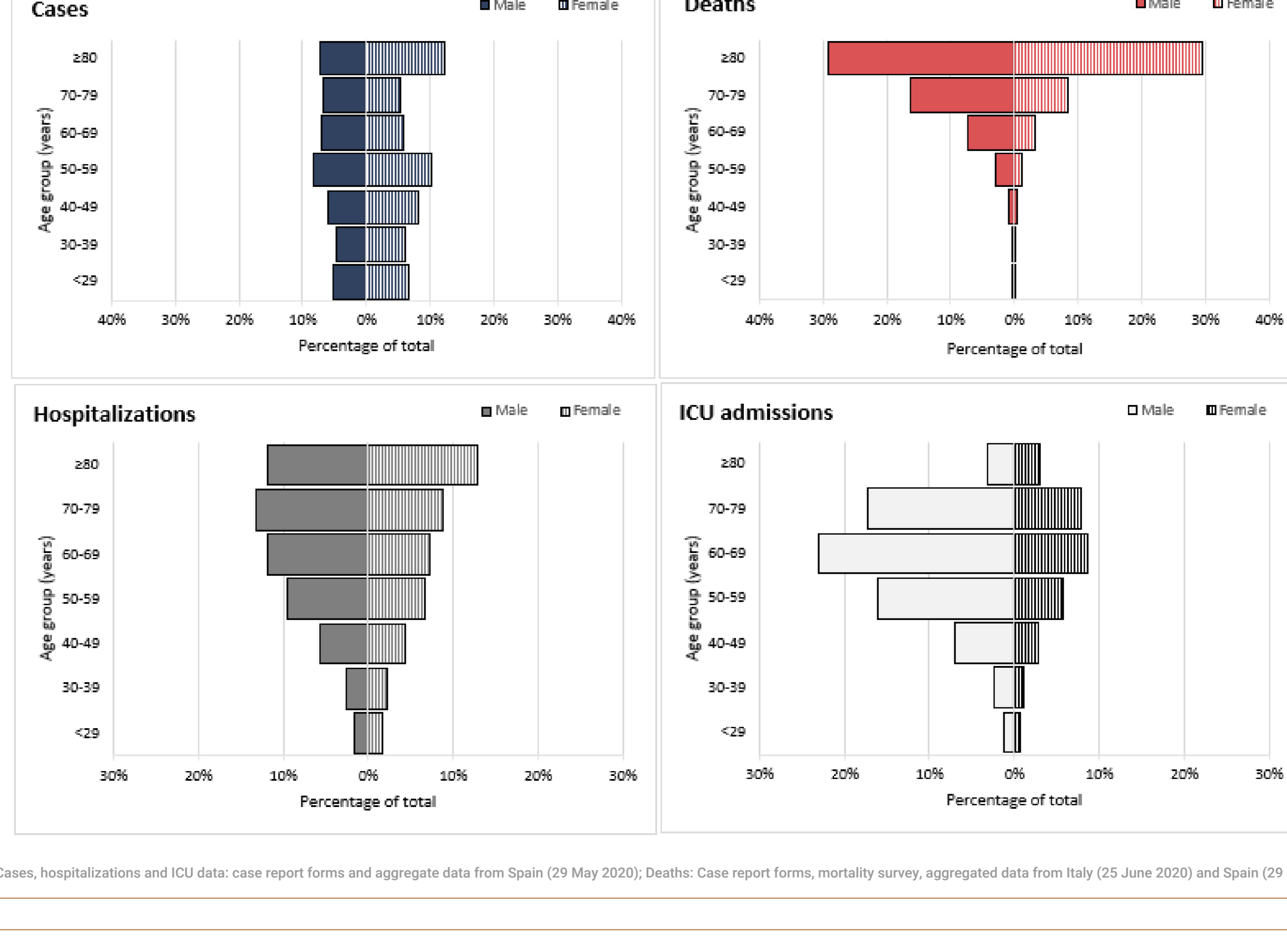
Source: Cases: Case-report forms and aggregate data from TESSy (Spain; until week 25/2020); Deaths: Case report forms, mortality survey, aggregated data from TESSy (Spain; until week 25/2020)

Table 1. Characteristics of COVID-19 cases and deaths

Characteristics	n	%	Total records with data available
Cases			
Age in years, median (range)*	55 (1-105)		551,326
Sex, male*	255,185	46	549,295
Recovered*	205,687	91	226,657
Health care workers*	92,509	21	444,559
Hospitalization*	141,142	27	528,025
Intensive care unit admissions*	10,635	2	451,010
Deaths			
Age in years, median (range)*	82 (0-108)		121,845
Sex, male*	59,182	57	121,722
At least one underlying condition*	69,017	95	62,261
• cardiovascular disease	18,964	66	28,898
• diabetes	9,167	33	27,572
• lung disease	5,740	23	25,143
• neurological disease / dementia	2,522	25	10,225
• renal disease	1,809	20	9,036
• malignancy	1,026	25	4,061
• obesity	633	10	6,077
• liver disease	479	5	8,993
• immune disease	203	3	6,048
• other	12,535	52	23,925

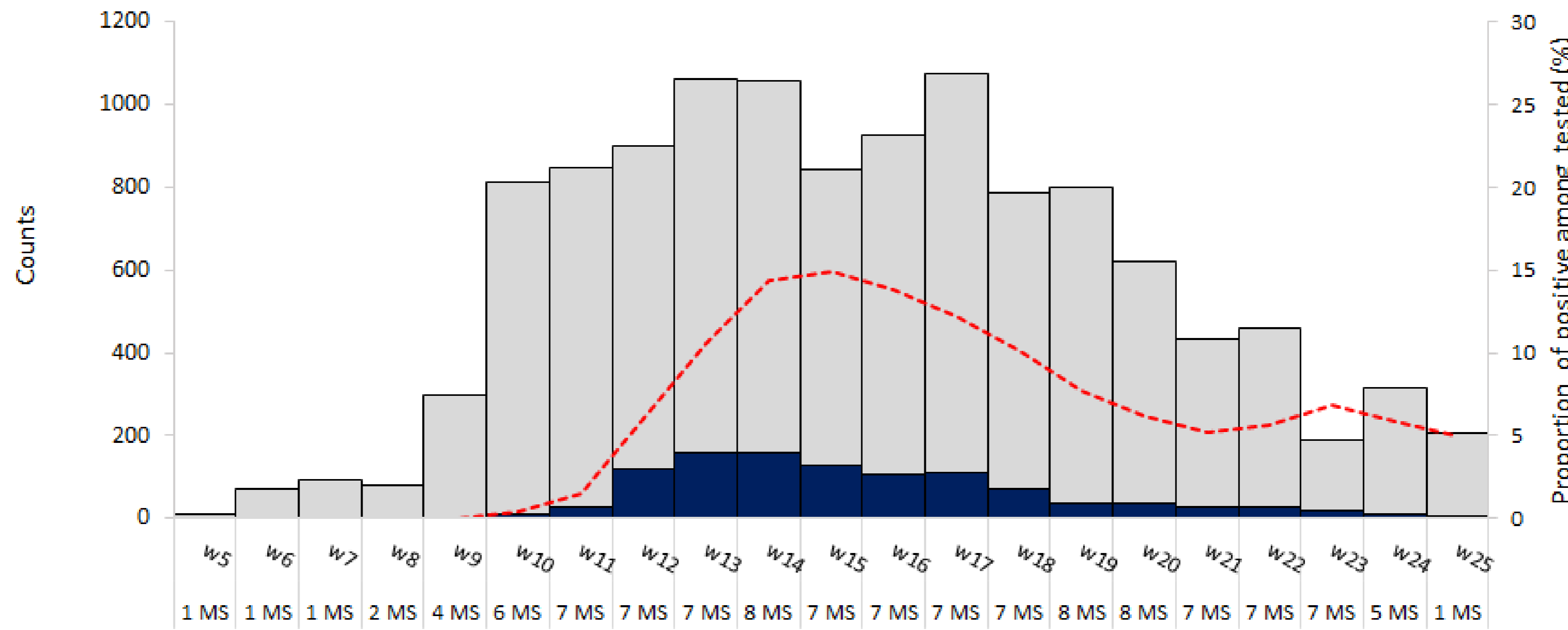
Source: *Case report forms (n=553,810); #Case report forms and aggregated data from Italy (23 June) and Spain (29 May 2020, TESSy) (n=653,000); Health care workers refer to occupation and not to the place of exposure; *Case report forms, mortality survey, aggregated data from Italy (25 June 2020) and Spain (29 May 2020) (n=120,497)

Figure 4. Percentage of COVID-19 cases (N=794,619), hospitalizations (N=140,756), ICU admissions (N=12,732) and deaths (N=121,709) by age group and sex



Source: Cases, hospitalizations and ICU data: case report forms and aggregate data from Spain (29 May 2020); Deaths: Case report forms, mortality survey, aggregated data from Italy (25 June 2020) and Spain (29 May 2020)

Figure 5. Percentage positive for COVID-19 in the ILI/ARI sentinel surveillance by reporting week



Source: Aggregate data from TESSy until week 25/2020; MS: Member State