



INSTITUTIONAL FRAMEWORK

Lead agency	Slovenian Traffic Safety Agency
Funded in national budget	Yes
National road safety strategy	Yes
Funding to implement strategy	Partially funded
Fatality reduction target	50% (2013-2022)

SAFER ROADS AND MOBILITY

Audits or star rating required for new road infrastructure	Partial
Design standards for the safety of pedestrians / cyclists	Yes
Inspections / star rating of existing roads	Yes
Investments to upgrade high risk locations	Yes
Policies & investment in urban public transport	Yes

SAFER VEHICLES

Total registered vehicles for 2016	1 468 439
Cars and 4-wheeled light vehicles	1 183 476
Motorized 2- and 3-wheelers	97 418
Heavy trucks	31 374
Buses	2 690
Other	153 481

Vehicle standards applied (UNECE WP.29)

Frontal impact standard	Yes
Electronic stability control	Yes
Pedestrian protection	Yes
Motorcycle anti-lock braking system	Yes

POST-CRASH CARE

National emergency care access number	National, single number
Trauma registry	National
Formal certification for prehospital providers	Yes
National assessment of emergency care systems	No

DATA

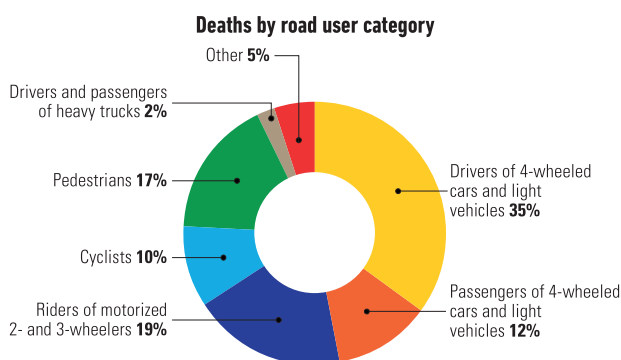
Reported road traffic fatalities (2016)	130 ^a (78% M, 22% F)
Reported rate per 100 000 population (2016)	6.3 ^a
WHO estimated road traffic fatalities (2016)	134 ^b
WHO estimated rate per 100 000 population (2016)	6.4 ^b

^a Police records. Died within 30 days of crash
^b WHO's method to obtain comparable country estimates: Group 1. Countries/areas with good death registration data. See explanatory note 3 in *Global status report on road safety 2018* for full details

SAFER ROAD USERS

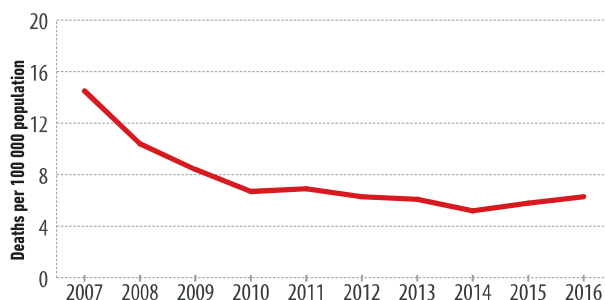
National speed limit law	Yes
Max urban speed limit	50 km/h ^c
Max rural speed limit	90 km/h
Max motorway speed limit	130 km/h
Local authorities can modify limits	No
Self-reported enforcement	0 1 2 3 4 5 6 7 8 9 10
Predominant type of enforcement	Manual
National drink-driving law	Yes
BAC limit – general population	≤ 0.05 g/dl
BAC limit – young or novice drivers	0.00 g/dl
Random breath testing carried out	Yes
Testing carried out in case of fatal crash	All drivers tested
Self-reported enforcement	0 1 2 3 4 5 6 7 8 9 10
% road traffic deaths involving alcohol	32% ^d
National motorcycle helmet law	Yes
Applies to drivers and passengers	Yes
Helmet fastening required	Yes
Helmet standard referred to and/or specified	Yes
Children passengers on motorcycles	Prohibited under 12 yrs ^e
Self-reported enforcement	0 1 2 3 4 5 6 7 8 9 10
Helmet wearing rate	–
National seat-belt law	Yes
Applies to front and rear seat occupants	Yes
Self-reported enforcement	0 1 2 3 4 5 6 7 8 9 10
Seat-belt wearing rate	92% Front seats ^f , 69% Rear seats ^f
National child restraint law	Yes
Children seated in front seat	Allowed in a child restraint ^g
Child restraint required	Up to 150 cm
Child restraint standard referred to and/or specified	No
Self-reported enforcement	0 1 2 3 4 5 6 7 8 9 10
% children using child restraints	–
National law on mobile phone use while driving	Yes
Ban on hand-held mobile phone use	Yes
Ban on hands-free mobile phone use	No
National drug-driving law	Yes

^c Can be increased up to 70 km/h
^d 2016, Police records
^e Only children older than 12 years are allowed to ride as passengers on motorcycles
^f 2016, Slovenian Traffic Safety Agency
^g Provided that airbag is deactivated if child is in a rear-facing child restraint system



Source: 2016, Police database

Trends in reported road traffic deaths



Source: Slovenian Traffic Safety Agency