

Estonia

Population: 1 312 442 | Income group: High | Gross national income per capita: US\$ 17 750



INSTITUTIONAL FRAMEWORK

Lead agency	Governmental Committee of Traffic Safety, Traffic Safety Department
Funded in national budget	Yes
National road safety strategy	Yes
Funding to implement strategy	Partially funded
Fatality reduction target	51% (2015-2025)

SAFER ROADS AND MOBILITY

Audits or star rating required for new road infrastructure	Partial
Design standards for the safety of pedestrians / cyclists	Yes
Inspections / star rating of existing roads	Yes
Investments to upgrade high risk locations	Yes
Policies & investment in urban public transport	No

SAFER VEHICLES

Total registered vehicles for 2016	865 040
Cars and 4-wheeled light vehicles	703 151
Motorized 2- and 3-wheelers	48 834
Heavy trucks	108 217
Buses	4 838
Other	0

Vehicle standards applied (UNECE WP.29)

Frontal impact standard	Yes
Electronic stability control	Yes
Pedestrian protection	Yes
Motorcycle anti-lock braking system	Yes

POST-CRASH CARE

National emergency care access number	National, single number
Trauma registry	None
Formal certification for prehospital providers	No
National assessment of emergency care systems	No

DATA

Reported road traffic fatalities (2016)	71 ^a (70% M, 30% F)
Reported rate per 100 000 population (2016)	5.4 ^a
WHO estimated road traffic fatalities (2016)	80 ^b
WHO estimated rate per 100 000 population (2016)	6.1 ^b

^a Police and Border Guard Board's analysis and data warehouse information system. Died within 30 days of crash

^b WHO's method to obtain comparable country estimates: Group 1. Countries/areas with good death registration data. See explanatory note 3 in *Global status report on road safety 2018* for full details

SAFER ROAD USERS

National speed limit law	Yes
Max urban speed limit	50 km/h ^c
Max rural speed limit	90 km/h
Max motorway speed limit	No ^d
Local authorities can modify limits	Yes
Self-reported enforcement	0 1 2 3 4 5 6 ⑦ 8 9 10
Predominant type of enforcement	Automated
National drink-driving law	Yes
BAC limit – general population	< 0.02 g/dl
BAC limit – young or novice drivers	< 0.02 g/dl
Random breath testing carried out	Yes
Testing carried out in case of fatal crash	All drivers tested
Self-reported enforcement	0 1 2 3 4 5 6 7 ⑧ 9 10
% road traffic deaths involving alcohol	10% ^e
National motorcycle helmet law	Yes
Applies to drivers and passengers	Yes
Helmet fastening required	Yes
Helmet standard referred to and/or specified	Yes
Children passengers on motorcycles	Prohibited under 12 yrs
Self-reported enforcement	0 1 2 3 4 5 6 7 8 ⑨ 10
Helmet wearing rate	98% Drivers ^f
National seat-belt law	Yes
Applies to front and rear seat occupants	Yes
Self-reported enforcement	0 1 2 3 4 5 6 ⑦ 8 9 10
Seat-belt wearing rate	97 Front seats ^g , 82% Rear seats ^g
National child restraint law	Yes ^h
Children seated in front seat	Not restricted
Child restraint required	— ^h
Child restraint standard referred to and/or specified	No
Self-reported enforcement	0 1 2 3 4 5 6 7 ⑧ 9 10
% children using child restraints	98% ^g
National law on mobile phone use while driving	Yes
Ban on hand-held mobile phone use	Yes
Ban on hands-free mobile phone use	No
National drug-driving law	Yes

^c Can be increased up to 90 km/h on certain conditions

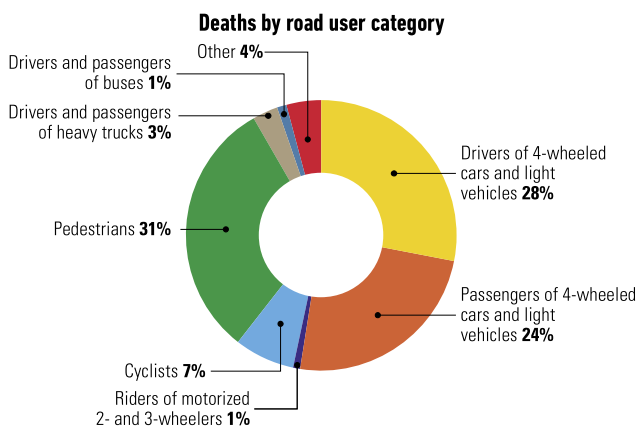
^d No motorways in the country

^e 2016, Police and Border Guard Board's analysis and data warehouse information system

^f 2015, Motorcyclist's travel, driving and safety habits

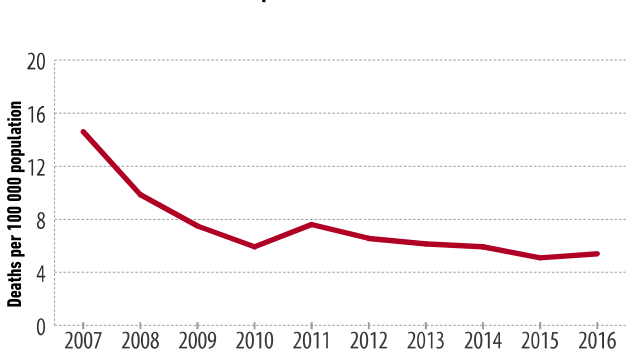
^g 2016, Traffic Behavior Monitoring 2016

^h The legislation generally states that children not tall enough to wear a seat belt must be secured by a safety device corresponding to the height and weight of the child but does not specify age/height/weight group covered



Source: 2016, Police and Border Guard Board's analysis and data warehouse information system

Trends in reported road traffic deaths



Source: Police and Border Guard Board's analysis and data warehouse information system and Statistics Estonia