

68TH SESSION OF THE WHO REGIONAL COMMITTEE FOR EUROPE

Rome, Italy, 17–20 September 2018

Joint Monitoring Framework (JMF)

for Health 2020, the 2030 Agenda and the Global Action Plan for the Prevention and Control of Noncommunicable Diseases (NCDs) 2013–2020

Dr Claudia Stein

Director

Division of Information, Evidence, Research and Innovation



The reporting challenge for countries



**HEALTH
2020**



THE GLOBAL GOALS
For Sustainable Development



GLOBAL ACTION PLAN
FOR THE PREVENTION AND CONTROL OF NONCOMMUNICABLE DISEASES
2013-2020

6 targets

37 indicators

19 core

18 additional

17 goals

169 targets

244 indicators
(26 indicators for Sustainable Development Goal (SDG) 3)

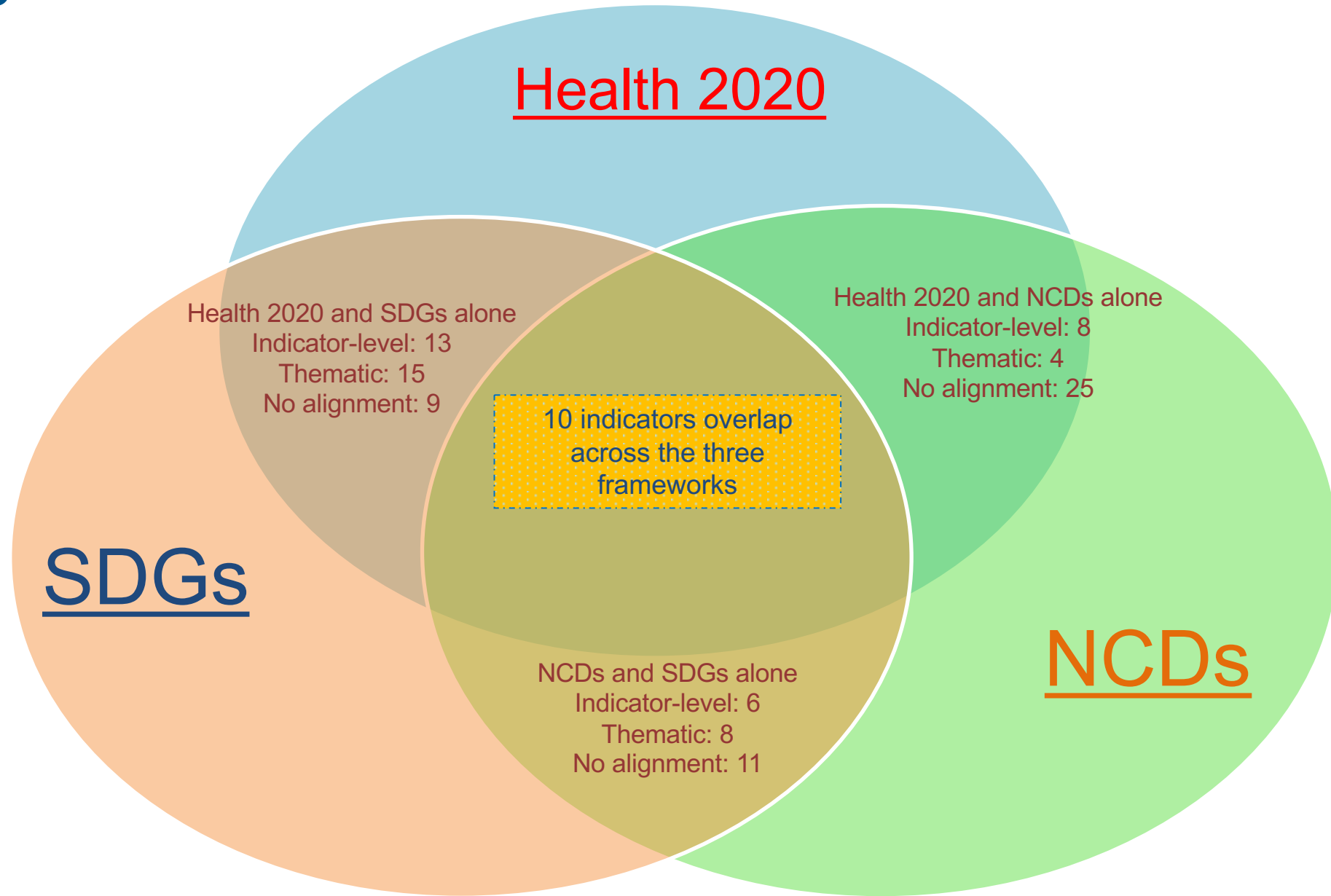
9 targets

25 indicators

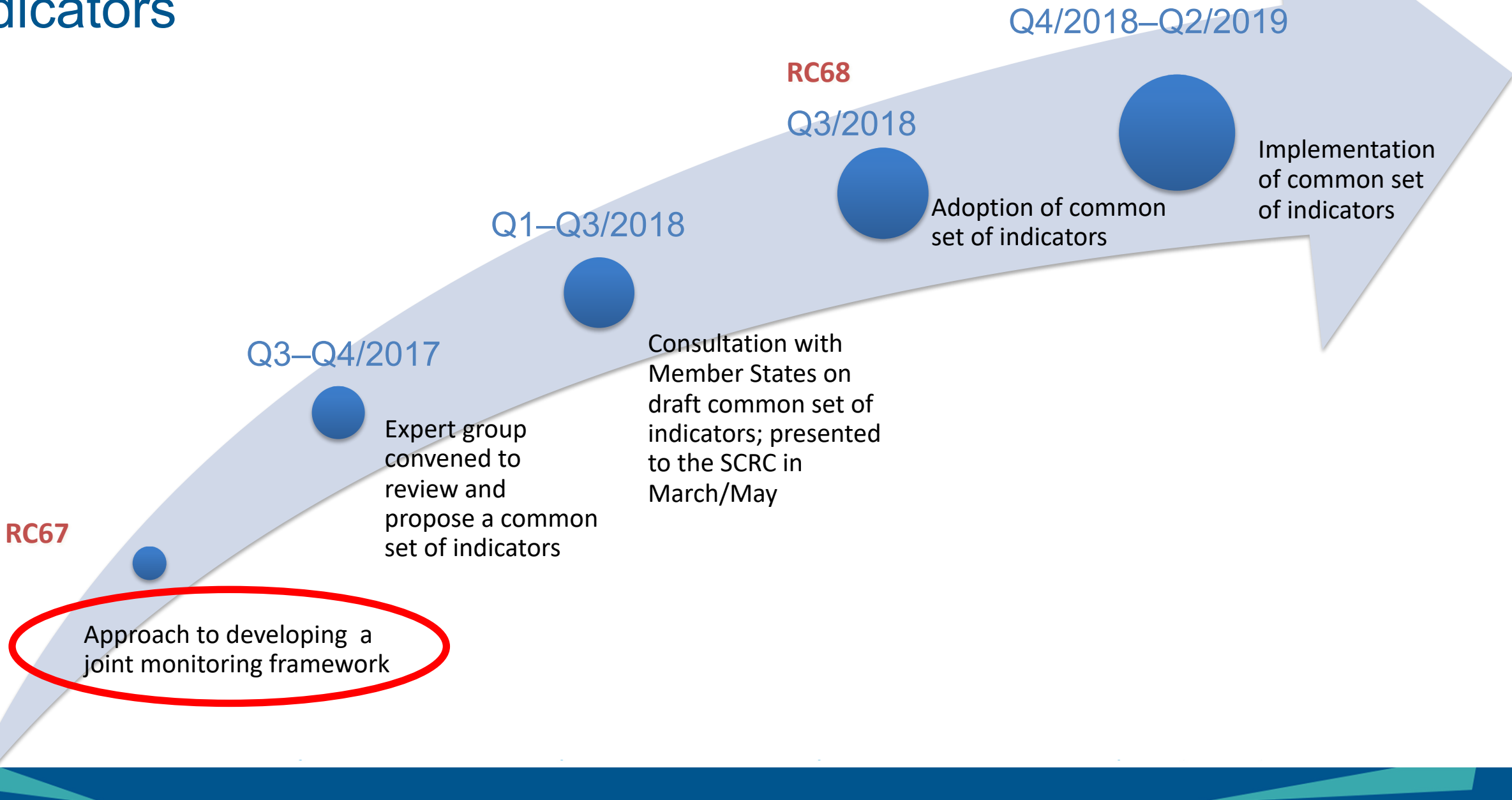
United Nations Economic Commission for Europe (UNECE) reports that even most developed countries:

- can only report on **50%** of SDG indicators;
- can only cover **76** of 169 targets.

Alignment of indicators across the three frameworks



Process to arrive at the JMF set of indicators



Meeting of the JMF expert group

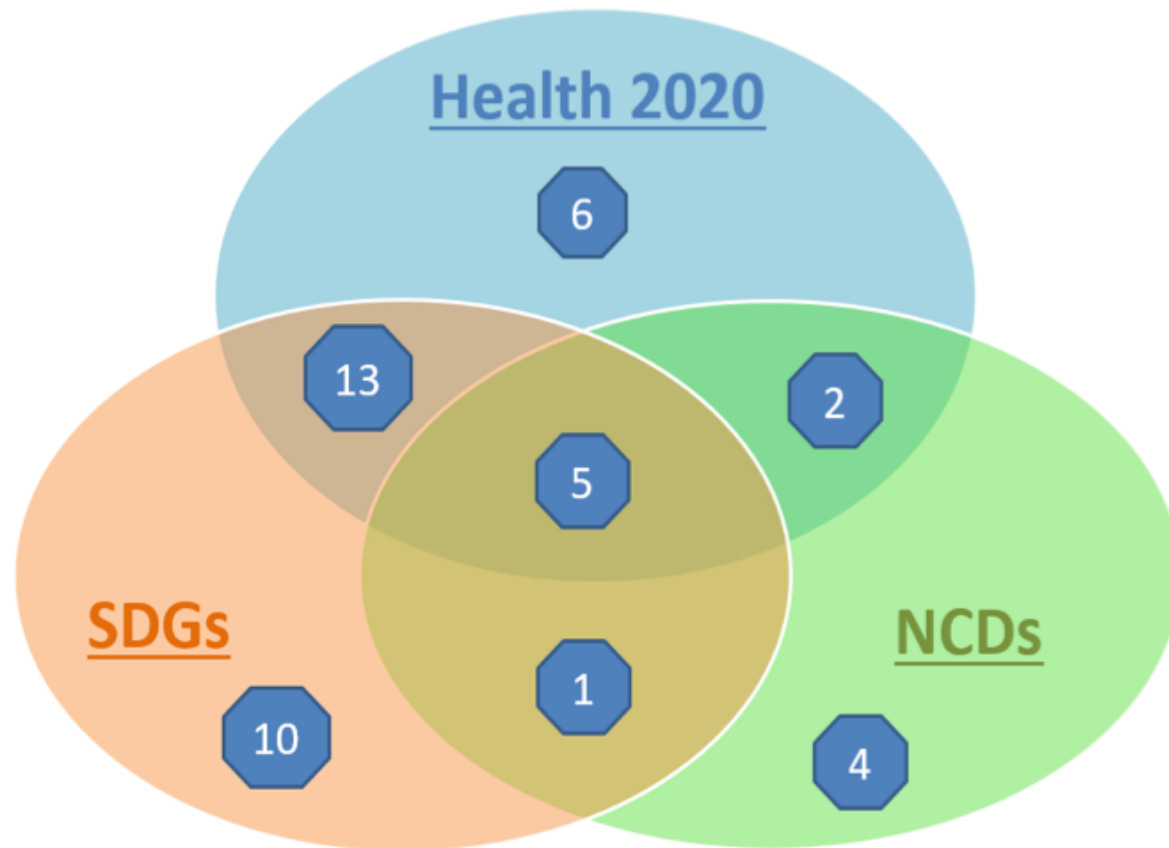
- Member States represented:

- Austria
- Finland
- Germany
- Iceland (SCRC member)
- Kazakhstan
- Malta (Chair)
- Netherlands
- Russian Federation
- Turkey

- European Commission, Organisation for Economic Co-operation and Development and all WHO/Europe technical divisions represented
- Meeting opened by Austrian Minister of Health and Women's Affairs



Coverage of indicators across frameworks and public health domains



Domains (number of indicators)

Mortality and health expectancies (8)

Health behaviours and risk factors (9)

Social determinants of health (5)

Morbidity – NCDs and communicable diseases (7)

Health systems (4)

Well-being (3)

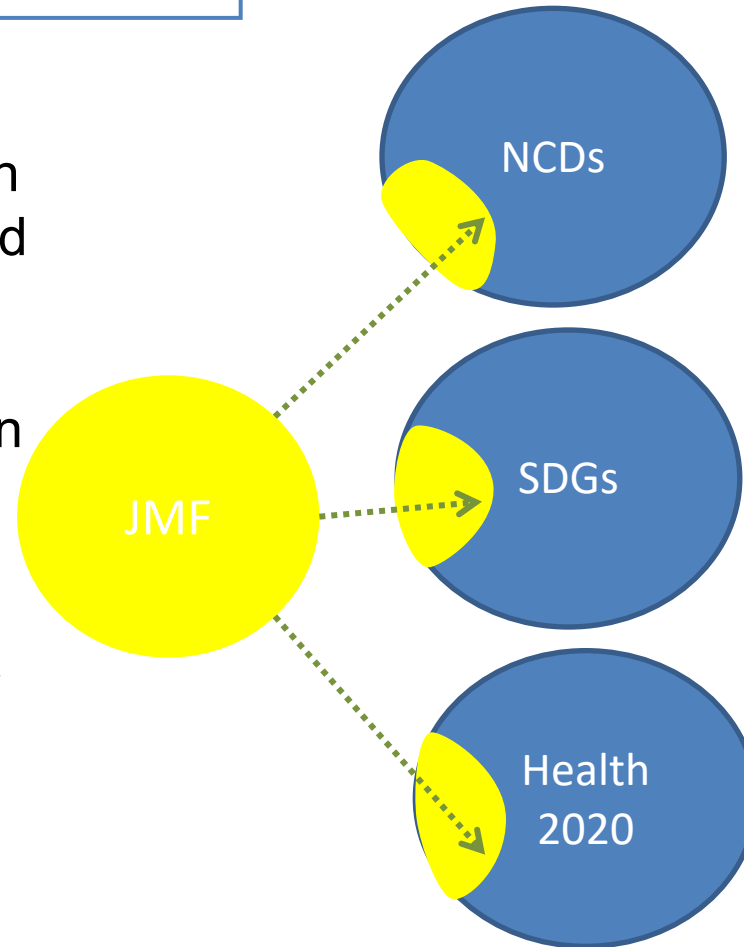
Environmental health (2)

Health policy (2)

JMF and reporting fully on all three frameworks

JMF

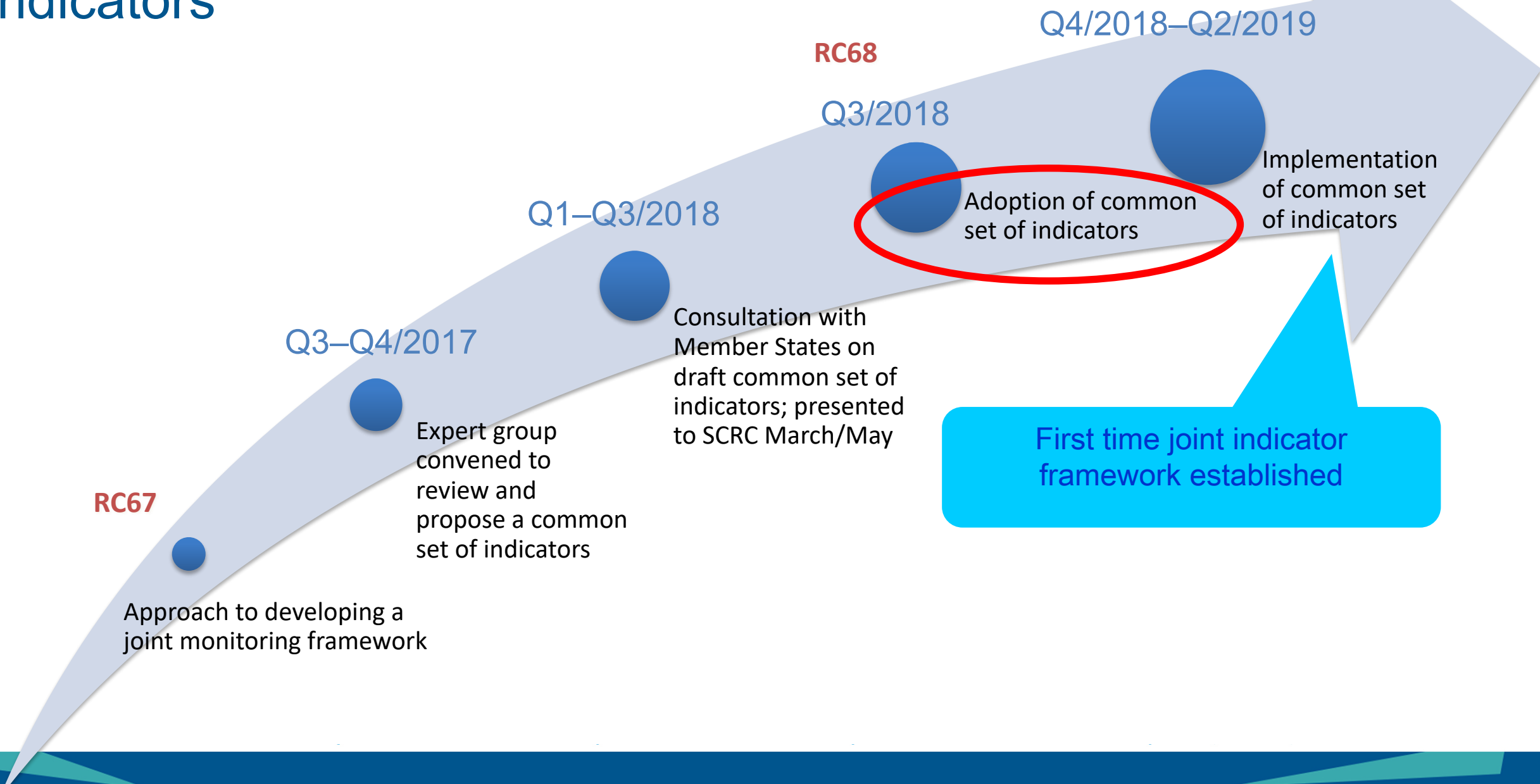
- Online data collection platform and standard reporting template
- Data collection schedule published in advance
- Reporting on the European Health Information Gateway



FULL REPORTING ON FRAMEWORKS

- Member States should endeavour to report fully on all three frameworks
- Data collection forms from WHO to omit indicators that have already been collected as part of the JMF set of indicators

Process to arrive at the JMF set of indicators





Thank you

WHO Regional Office for Europe

UN City
Marmorvej 51
DK-2100 Copenhagen Ø
Denmark



World Health
Organization

REGIONAL OFFICE FOR
Europe



Organisation
mondiale de la Santé

BUREAU RÉGIONAL DE L'
Europe



Weltgesundheitsorganisation

REGIONALBÜRO FÜR
Europa



Всемирная организация
здравоохранения

Европейское региональное бюро