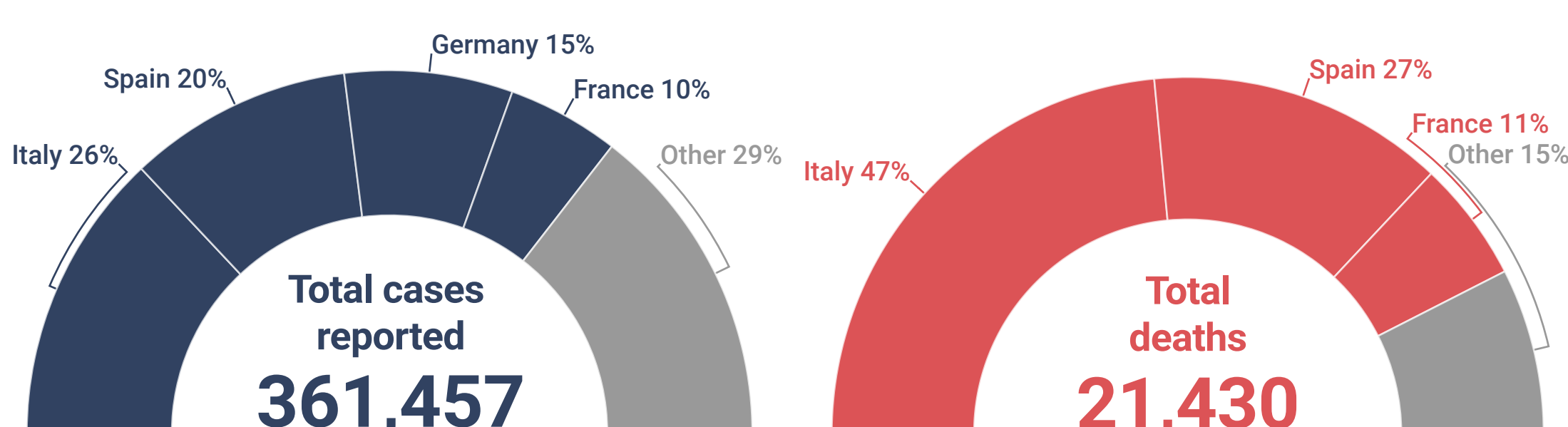


Best viewed using Chrome, Safari or Internet Explorer 9 or higher. If you are having trouble viewing this page please click [here](#) for the alternative viewer or [download the report as an image or PDF](#).

Key points

- The number of cases reported in the Region doubled compared to week 12/2020
- 71% of the cases have been reported from Italy, Spain, Germany and France
- 84% of the deaths have been reported from Spain, Italy, and France
- 95% of deaths were in persons aged 60 years and older
- 83% of deaths with information available had at least one underlying condition
- One out of 10 reported infections with information available was in a health care worker
- High excess mortality is observed in some EuroMoMo participating countries, primarily in the age group of 65 years and above (see European Mortality Bulletin <https://www.euromomo.eu/>).
- Five countries reported on COVID-19 detections in persons with influenza-like illness presenting to sentinel surveillance sites; percent positivity ranged from 0-29%



Countries & territories with reported cases

60 (0)

Total confirmed cases

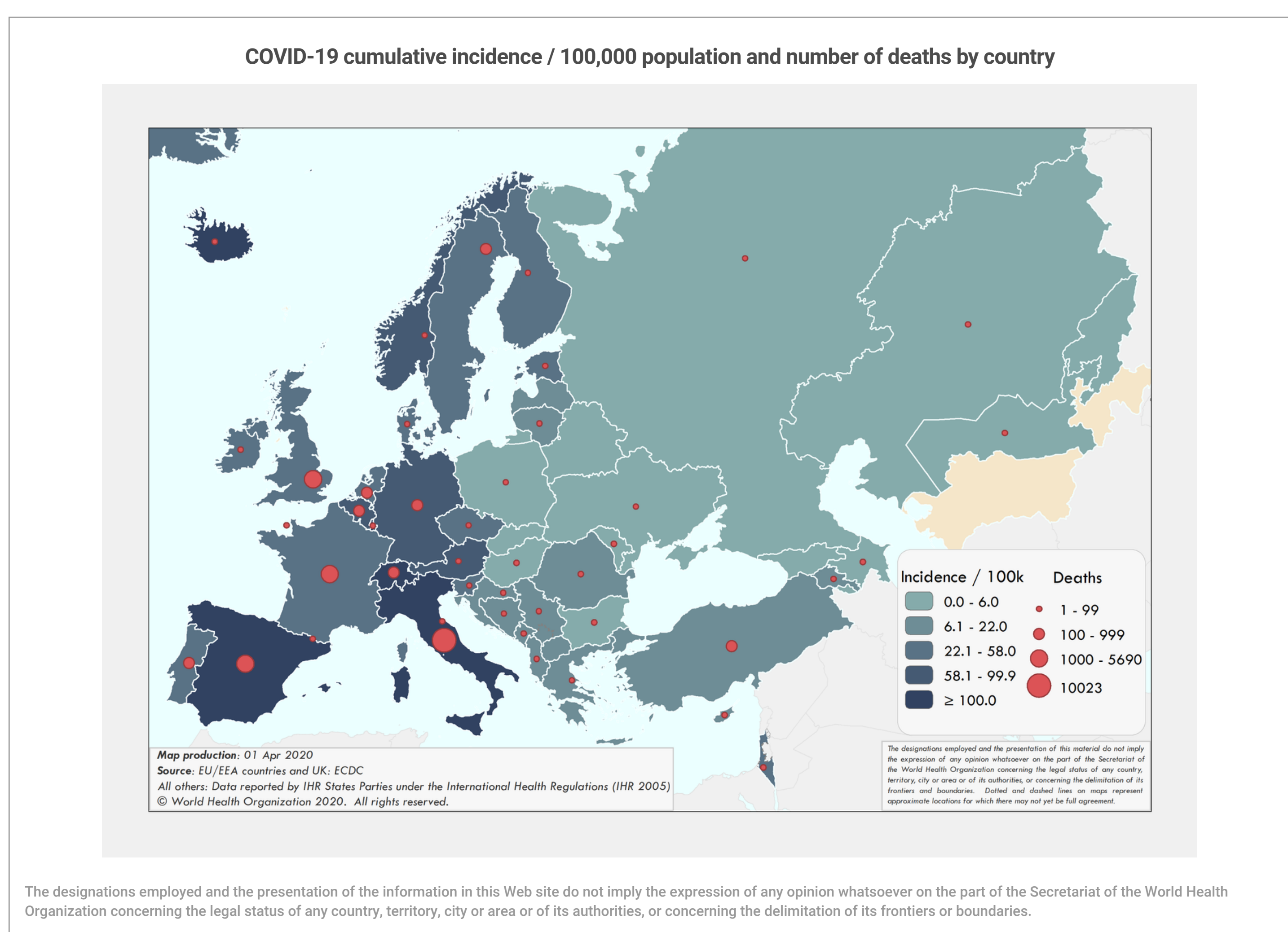
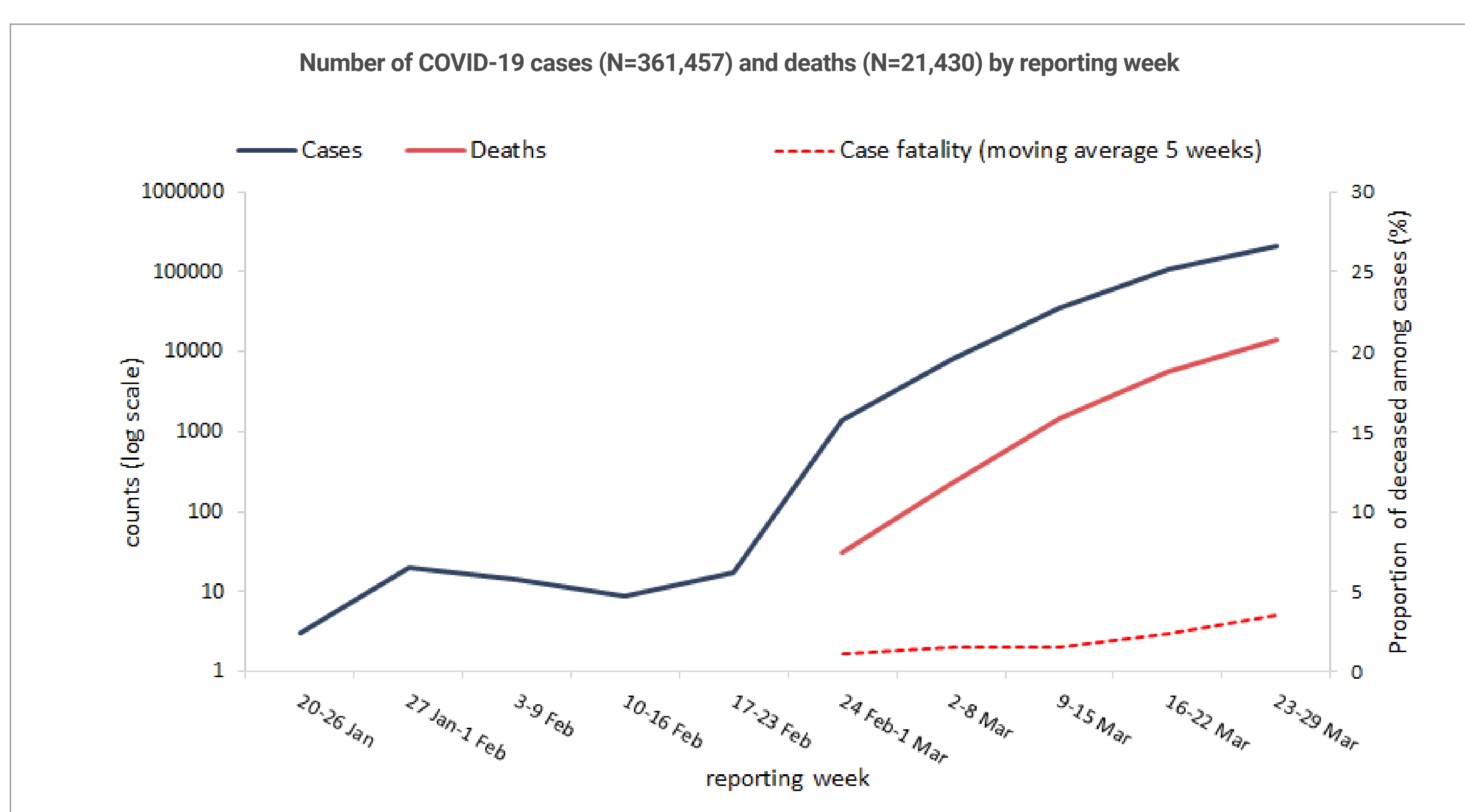
361,457 (208,823)

Total deaths

21,430 (13,994)

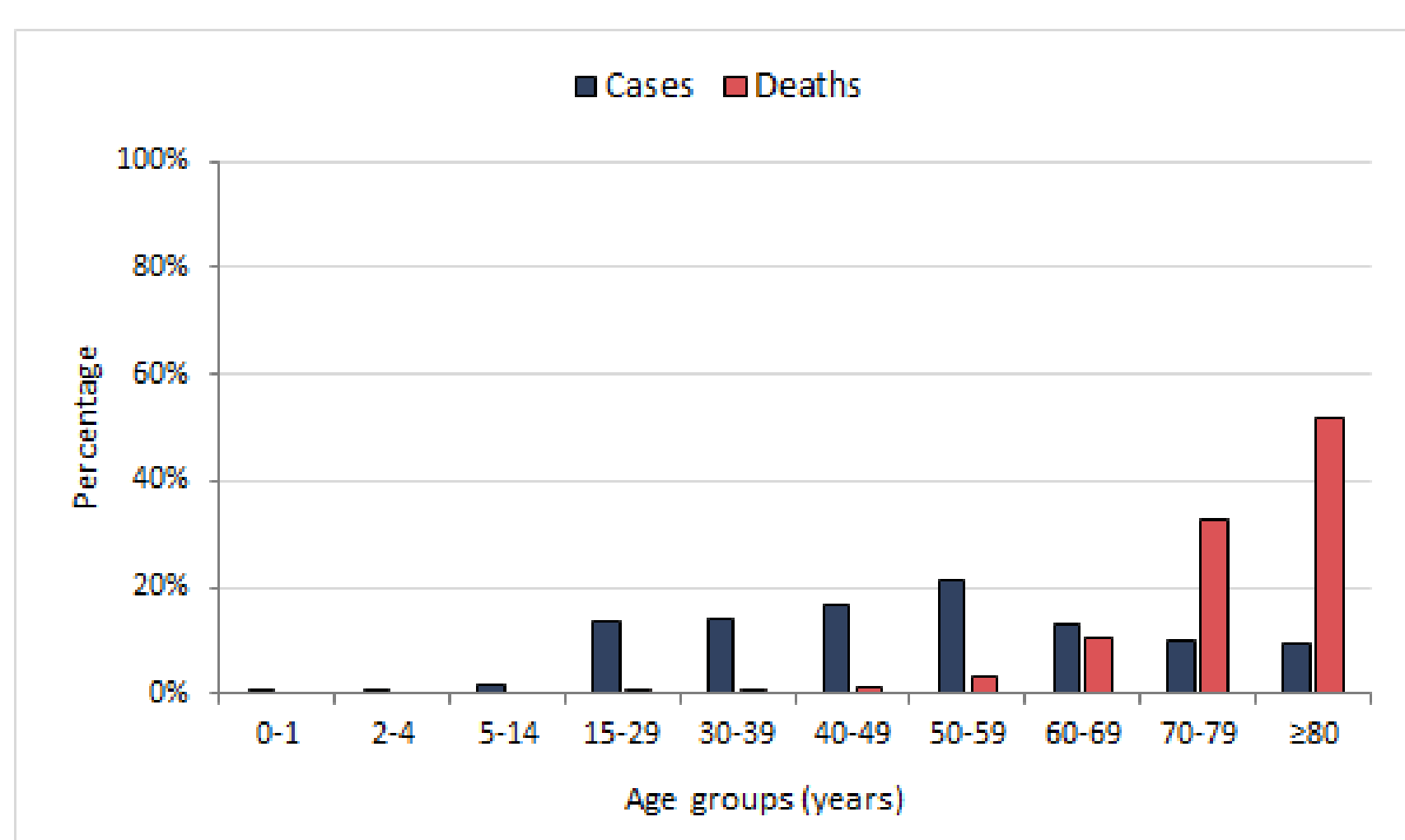
(numbers in brackets are new for the week of 23-29 March 2020)

For more detailed information see: [WHO Global situation reports](#) [WHO Global situation dashboard](#)

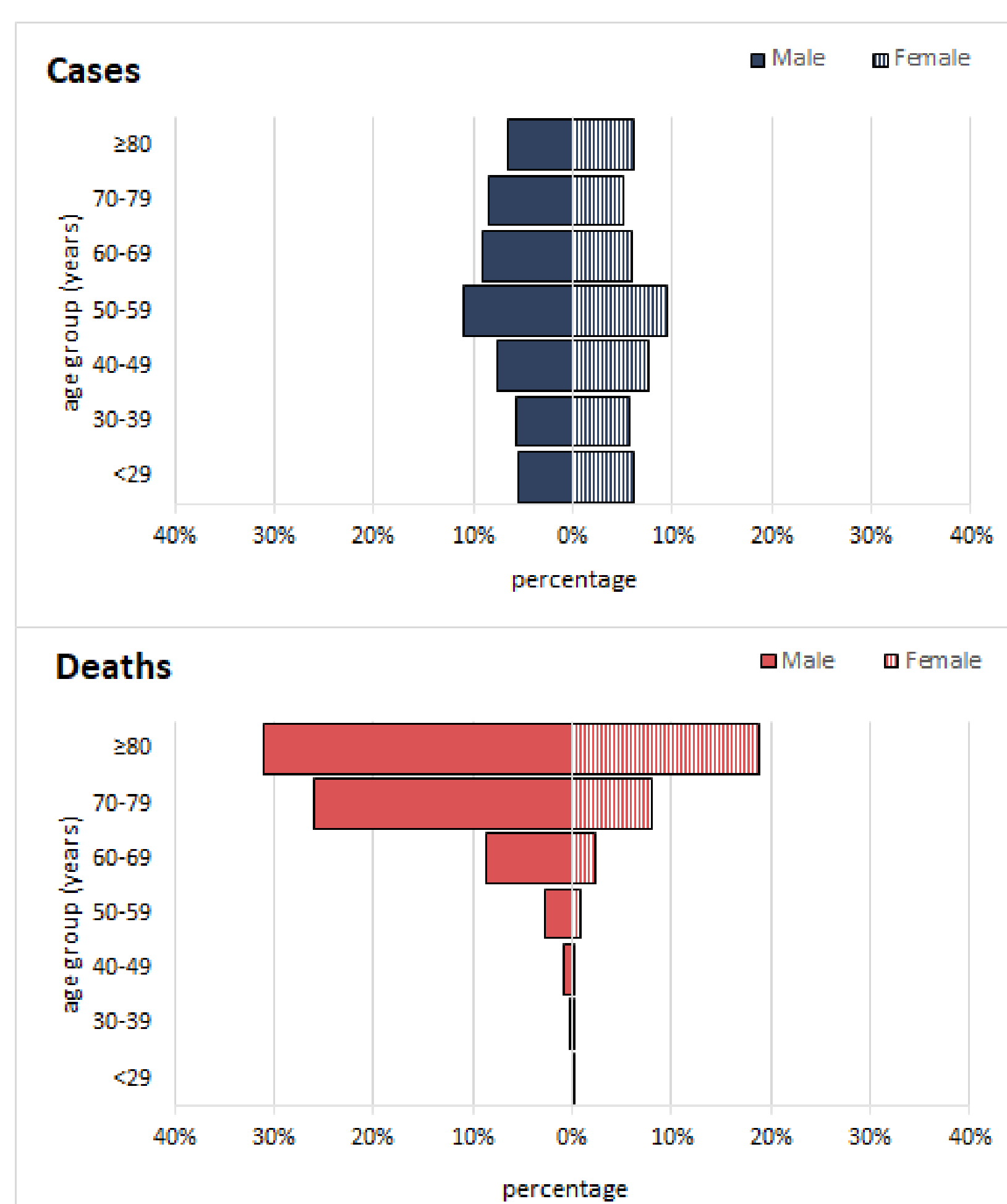


The designations employed and the presentation of the information in this Web site do not imply the expression of any opinion whatsoever on the part of the Secretariat of the World Health Organization concerning the legal status of any country, territory, city or area or of its authorities, or concerning the delimitation of its frontiers and boundaries. Dotted and dashed lines on maps represent approximate locations for which there may not yet be full agreement.

Percentage of COVID-19 cases (N=123,993) and deaths (N=8,502) by age group



Percentage of COVID-19 cases (N=195,030) and deaths (N=7,521) by age group and sex



Characteristics of COVID-19 cases and deaths

	n	%	Total records with data available
Cases			
Age in years, median (range)*	50 (1-104)		96530
Sex, male*	49741	52	95401
Travelled*	8481	26	33106
Recovered*	51857	91	56774
Health care workers [#]	9448	10	91190
Hospitalization [#]	76267	39	196956
Intensive care unit admission [#]	9190	5	183280
Deaths			
Age in years, median (range) [^]	79 (27-100)		8581
Sex, male [^]	5903	69	8569
At least one underlying condition [^]	1544	83	1855
• cardiovascular disease	1244	66	1888
• diabetes	551	29	1883
• lung disease	317	17	1855
• renal disease	203	21	977
• malignancy	158	16	977
• neurological disease / dementia	134	13	1056
• other	217	10	2173

Source:

*Case report forms (n=97,320);

[#]Case report forms and aggregated data from Italy (26/29 March 2020) and Spain (27 March 2020) (n=222,763); Health care workers refer to occupation and not to the place of exposure

[^]Case report forms, mortality survey, aggregated data from Italy (26 March 2020) and Spain (27 March 2020) (n=8,585);

Source: International Health Regulation (IHR 2005) reports; case report forms; aggregated data from Italy and Spain.

The reported data will be updated as more information becomes available.

© World Health Organization 2020