

# Finland

Population: 5 503 132 | Income group: High | Gross national income per capita: US\$ 44 730



## INSTITUTIONAL FRAMEWORK

Lead agency	Ministry of Transport and Communications
Funded in national budget	Yes
National road safety strategy	Yes
Funding to implement strategy	Partially funded
Fatality reduction target	< 136 fatalities by 2020 (2010-2020)

## SAFER ROADS AND MOBILITY

Audits or star rating required for new road infrastructure	Yes
Design standards for the safety of pedestrians / cyclists	Yes
Inspections / star rating of existing roads	Yes
Investments to upgrade high risk locations	Yes
Policies & investment in urban public transport	Yes

## SAFER VEHICLES

Total registered vehicles for 2016	5 217 850
Cars and 4-wheeled light vehicles	3 781 441
Motorized 2- and 3-wheelers	592 960
Heavy trucks	146 624
Buses	17 536
Other	679 289

## Vehicle standards applied (UNECE WP.29)

Frontal impact standard	Yes
Electronic stability control	Yes
Pedestrian protection	Yes
Motorcycle anti-lock braking system	Yes

## POST-CRASH CARE

National emergency care access number	National, single number
Trauma registry	National
Formal certification for prehospital providers	Yes
National assessment of emergency care systems	Yes

## DATA

Reported road traffic fatalities (2016)	252 <sup>a</sup> (81% M, 19% F)
Reported rate per 100 000 population (2016)	4.6 <sup>a</sup>
WHO estimated road traffic fatalities (2016)	260 <sup>b</sup>
WHO estimated rate per 100 000 population (2016)	4.7 <sup>b</sup>

<sup>a</sup> Statistics Finland. Died within 30 days of crash

<sup>b</sup> WHO's method to obtain comparable country estimates: Group 1. Countries/areas with good death registration data. See explanatory note 3 in *Global status report on road safety 2018* for full details

## SAFER ROAD USERS

National speed limit law	Yes
Max urban speed limit	50 km/h
Max rural speed limit	80 km/h
Max motorway speed limit	120 km/h
Local authorities can modify limits	Yes
Self-reported enforcement	0 1 2 3 4 5 6 7 8 9 10
Predominant type of enforcement	Manual and automated
National drink-driving law	Yes
BAC limit – general population	< 0.05 g/dl
BAC limit – young or novice drivers	< 0.05 g/dl
Random breath testing carried out	Yes
Testing carried out in case of fatal crash	All drivers tested
Self-reported enforcement	0 1 2 3 4 5 6 7 8 9 10
% road traffic deaths involving alcohol	24% <sup>c</sup>
National motorcycle helmet law	Yes
Applies to drivers and passengers	Yes
Helmet fastening required	No
Helmet standard referred to and/or specified	No
Children passengers on motorcycles	Not restricted
Self-reported enforcement	0 1 2 3 4 5 6 7 8 9 10
Helmet wearing rate	98% All riders <sup>d</sup>
National seat-belt law	Yes
Applies to front and rear seat occupants	Yes
Self-reported enforcement	0 1 2 3 4 5 6 7 8 9 10
Seat-belt wearing rate	95% Front seats <sup>e</sup> , 85% Rear seats <sup>e</sup>
National child restraint law	Yes
Children seated in front seat	Allowed in a child restraint <sup>f</sup>
Child restraint required	Up to 135 cm
Child restraint standard referred to and/or specified	Yes
Self-reported enforcement	0 1 2 3 4 5 6 7 8 9 10
% children using child restraints	97% <sup>e</sup>
National law on mobile phone use while driving	Yes
Ban on hand-held mobile phone use	Yes
Ban on hands-free mobile phone use	No
National drug-driving law	Yes

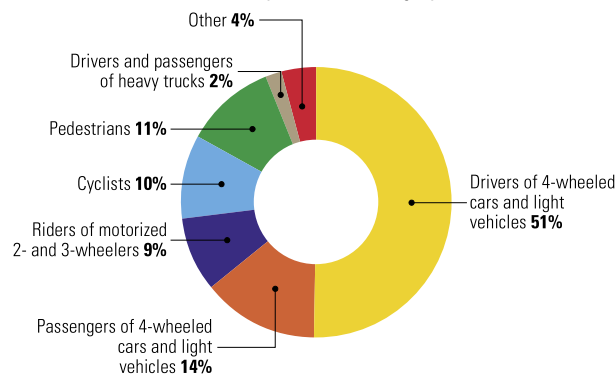
<sup>c</sup> 2016, Statistics Finland

<sup>d</sup> 2011, Finnish Road Safety Council, Research survey on moped drivers among students

<sup>e</sup> 2016, Finnish Road Safety Council

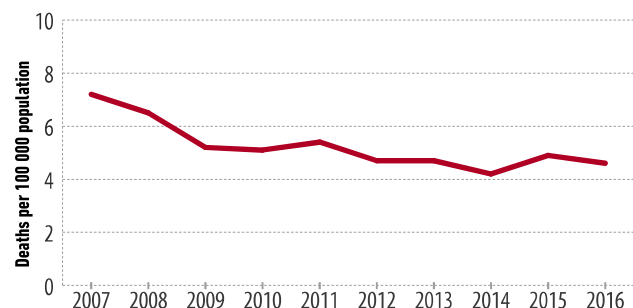
<sup>f</sup> Provided that airbag is deactivated if child is in a rear-facing child restraint system

Deaths by road user category



Source: 2016, Statistics Finland

Trends in reported road traffic deaths



Source: Statistics Finland