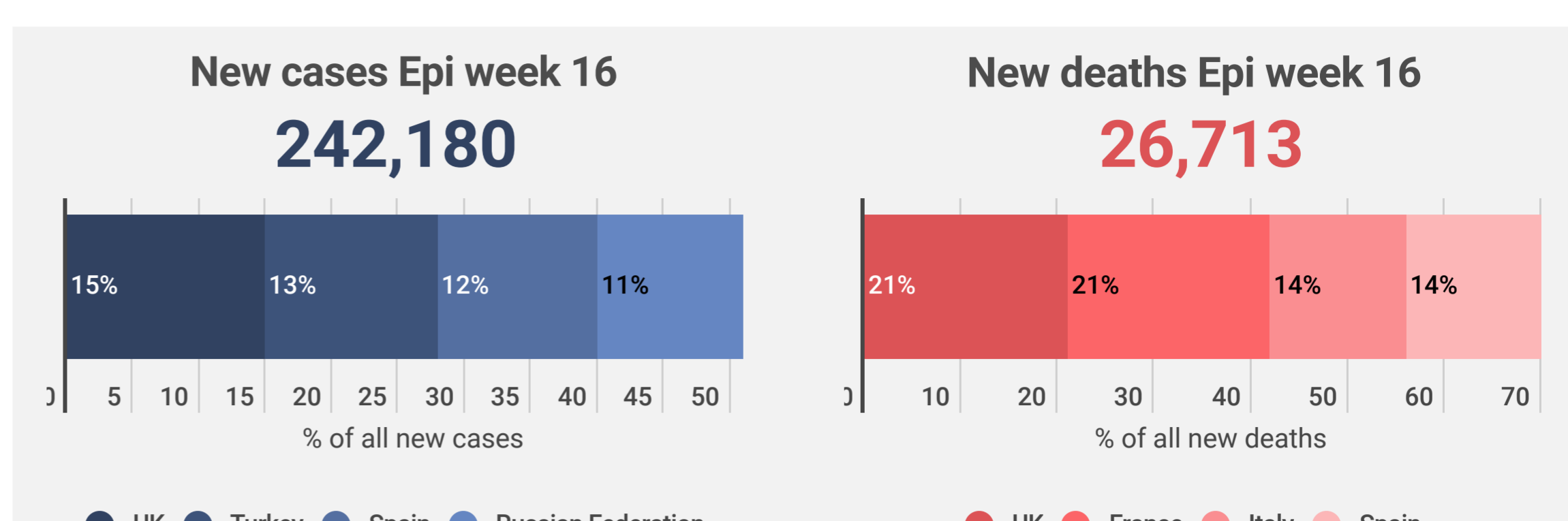
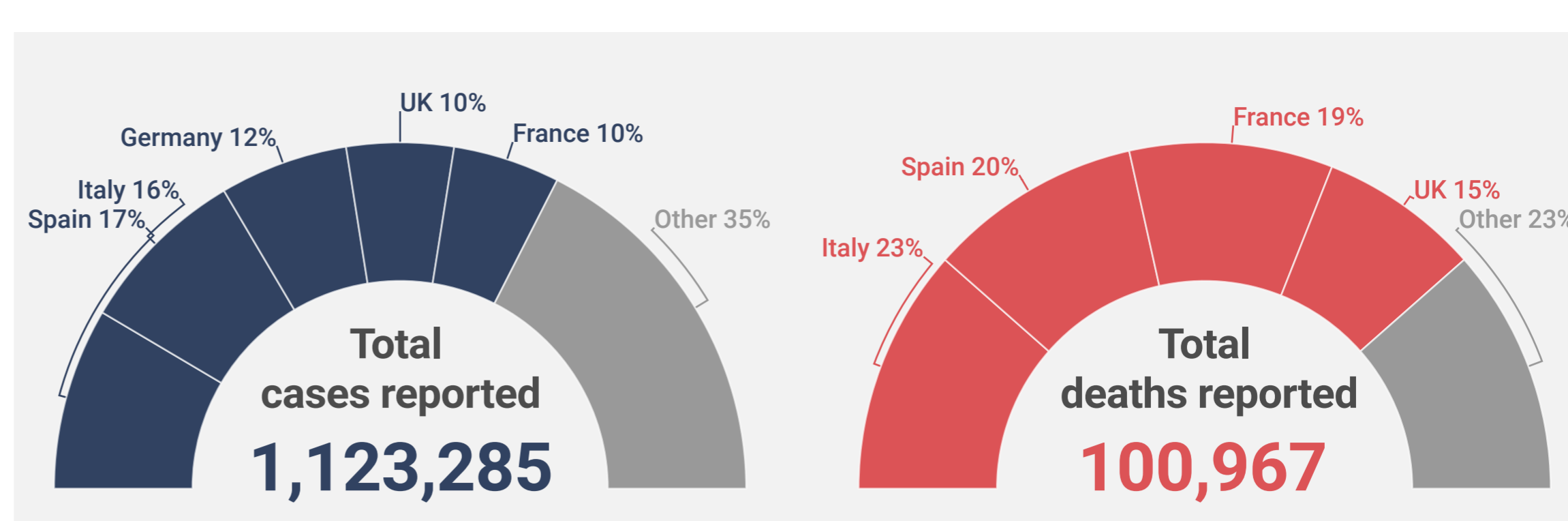


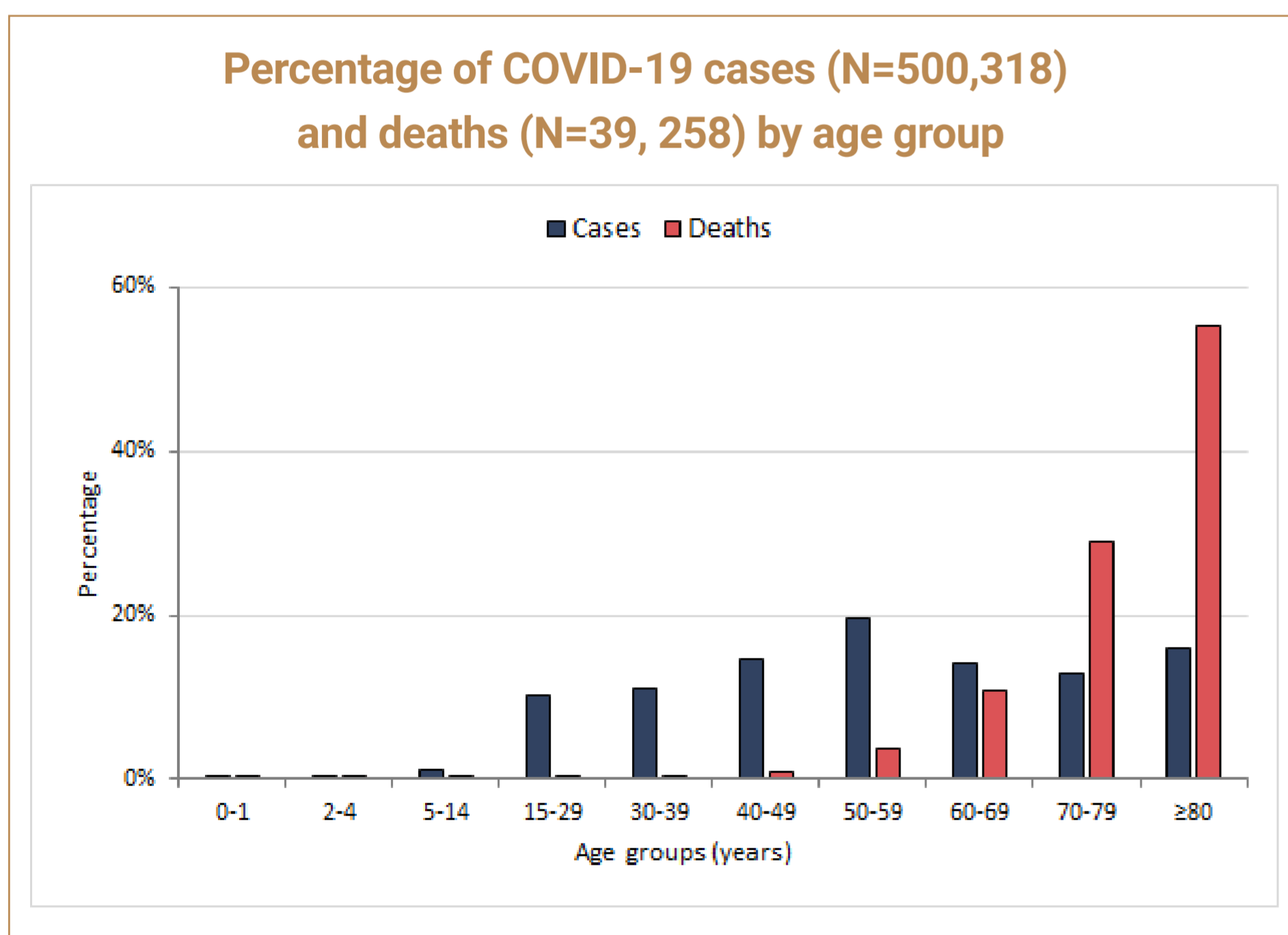
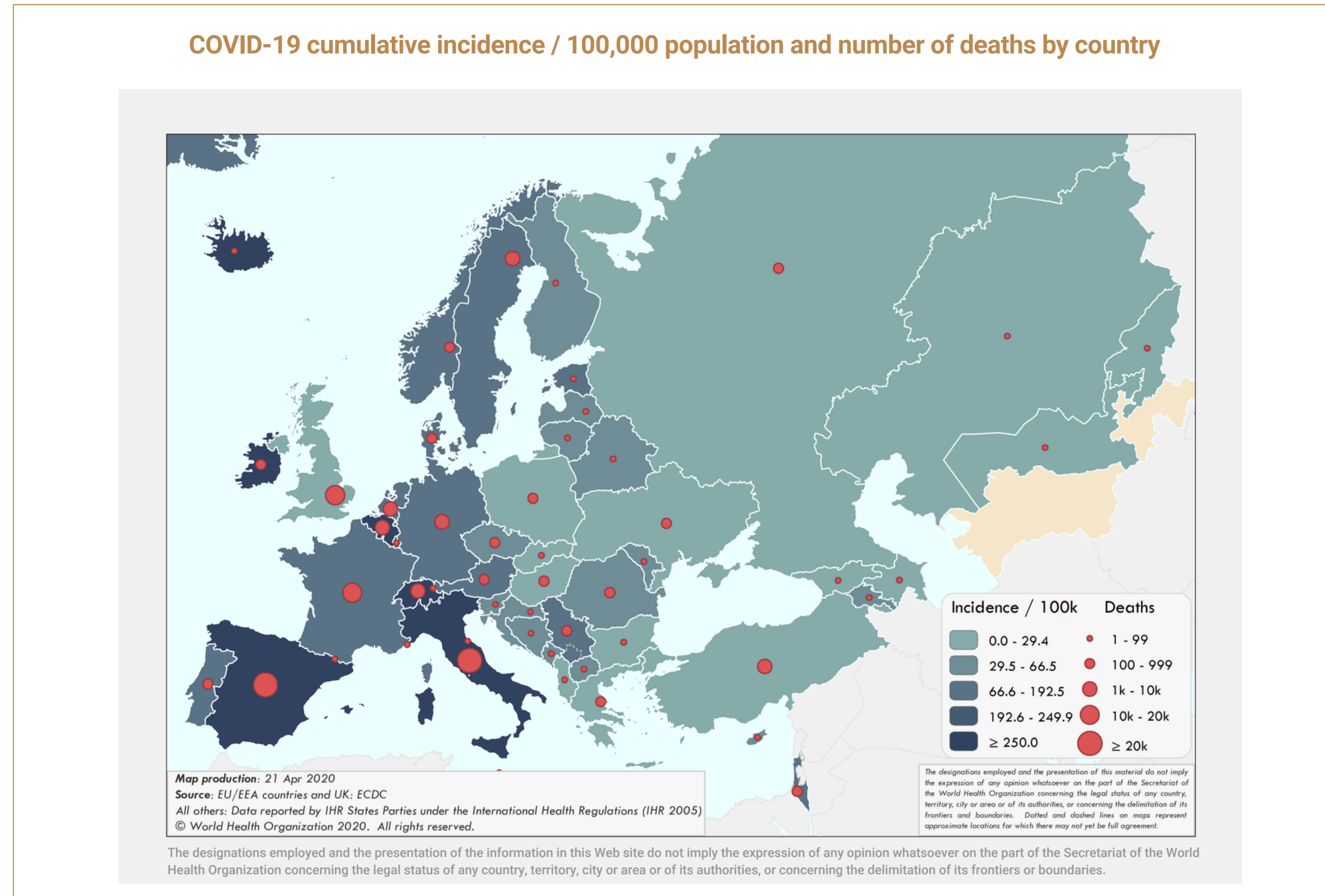
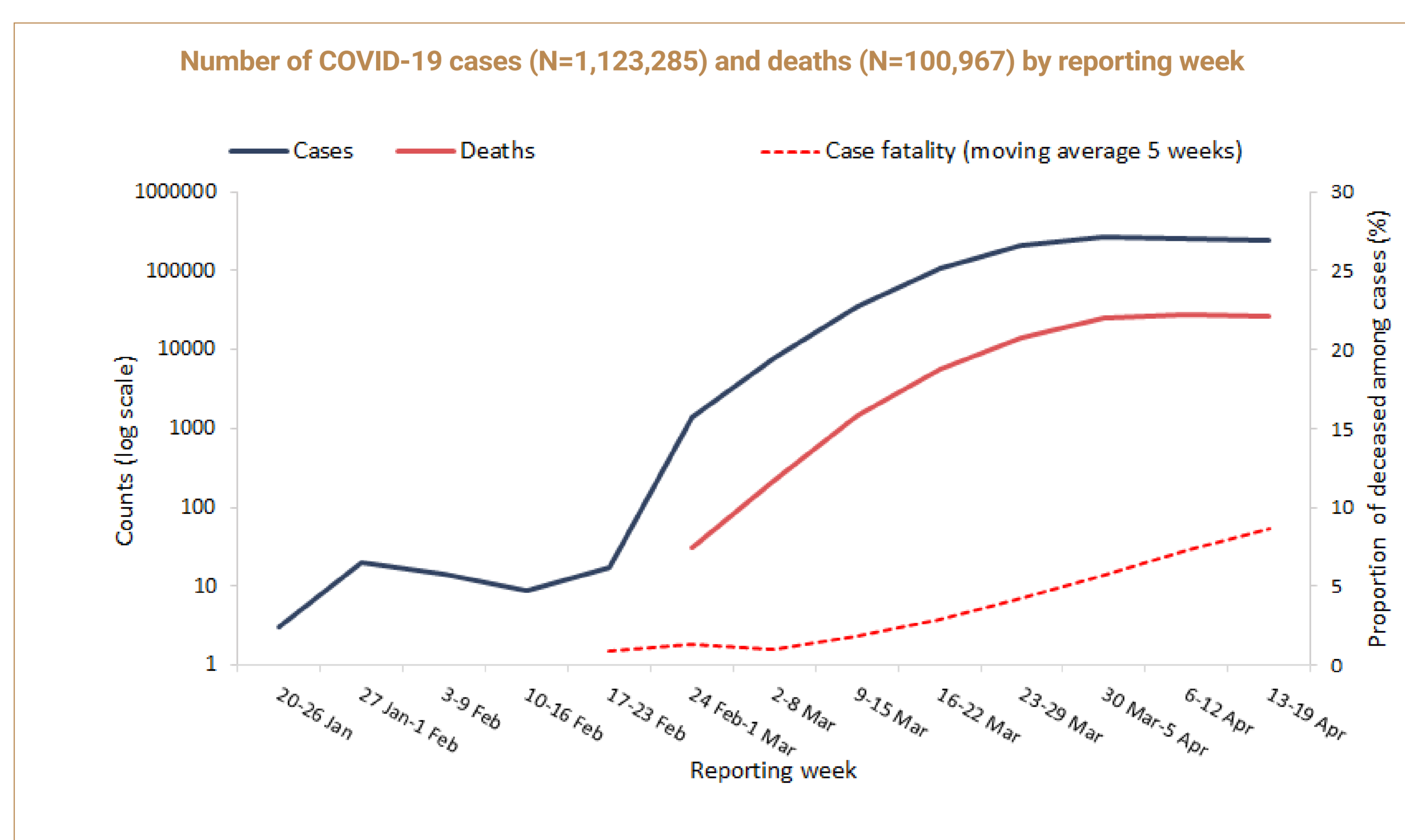
Best viewed using Chrome, Safari or Internet Explorer 9 or higher. If you are having trouble viewing this page please [click here](#) for the alternative viewer.

Key points

- The number of cases reported in week 16/2020 in the Region was similar with that reported for the week 15/2020
- 51% of the cases reported in week 16/2020 were from United Kingdom, Turkey, Spain and Russian Federation
- 13 countries and territories in the Region each reported a cumulative incidence of >250 cases per 100,000 population
- Reported case counts are increasing in the eastern part of the Region, particularly in Russia, Serbia, Ukraine and Kazakhstan
- 69% of the deaths reported in week 16/2020 were from United Kingdom, France, Italy and Spain
- The proportion of reported cases that died has increased since week 9 (2.2%) and is now 11%. This is likely due to a range of factors including a shift to testing more severe cases and increased incidence in older age groups
- 16% of all reported infections with information available was in a health care worker
- 82% of ICU admissions were in persons aged 50-79 years of age, with 74% of all ICU admissions in men
- 95% of deaths were in persons aged 60 years and older and 63% of all deaths were in men
- 95% of deaths with information available had at least one underlying condition, with cardiovascular disease the leading comorbidity (70%)
- In week 16/2020, there continued to be excess all-cause mortality in the pooled 20 countries/regions that coincides with COVID-19 transmission in some countries, primarily in the age group ≥65 years, but also in the 15-64 years age group (see [European Mortality Bulletin](#)).
- In week 16/2020, four countries reported a total of 74 tests and no COVID-19 detections in persons with influenza-like illness in the primary care setting. The updated positivity rate in week 15/2020 was 8.2% (7 countries) compared to 9.2% (8 countries) in week 14/2020.



For more detailed information see: [WHO Global situation reports](#) [WHO Global situation dashboard](#)



Characteristics of COVID-19 cases and deaths

Characteristics	n	%	Total records with data available
Cases			
Age in years, median (range)*	55 (1-105)		378972
Sex, male*	183194	49	376055
Travelled*	16000	16	100979
Recovered*	32823	26	124863
Health care workers*	54749	16	339657
Hospitalization*	91606	33	281424
Intensive care unit admissions*	8709	4	211703
Deaths			
Age in years, median (range)^	80 (0-105)		39258
Sex, male^	24573	63	39030
At least one underlying condition^	12831	95	13497
• cardiovascular disease	7652	70	10990
• diabetes	3688	34	10701
• lung disease	2437	22	10927
• neurological disease / dementia	698	24	2930
• renal disease	561	21	2682
• malignancy	463	24	1917
• obesity	251	10	2432
• liver disease	124	5	2604
• immune disease	85	3	2608
• other	4718	43	10960

Source: *Case report forms (n=380,688); ^Case report forms and aggregated data from Italy (16/17 April 2020) and Spain (16 April 2020) (n=566,491); Health care workers refer to occupation and not to the place of exposure ^Case report forms, mortality survey, aggregated data from Italy (16 April 2020) and Spain (16 April 2020) (n=39,272).

