

Best viewed using Chrome, Safari or Internet Explorer 9 or higher. If you are having trouble viewing this page please click here for the alternative viewer.

Key points

Week 24/2020 (8 - 14 Jun 2020)

- The number of cases reported in week 24/2020 in the Region has declined by 50% since week 14/2020
- 65% of the cases reported in week 24/2020 were from the Russian Federation, United Kingdom, Turkey and Sweden
- Six countries had a crude incidence of ≥ 35 per 100,000 in week 24/2020: Armenia, Sweden, Belarus, Republic of Moldova, North Macedonia and the Russian Federation
- In 17 countries, the 14-day cumulative incidence increased by $\geq 10\%$ in week 24/2020 compared to the previous week, however for some countries data was retro-adjusted by national authorities. In order of percentage increase: Andorra, North Macedonia, Israel, Slovenia, Bulgaria, Albania, Azerbaijan, Greece, Sweden, Uzbekistan, Bosnia and Herzegovina, Republic of Moldova, Armenia, Ukraine, Cyprus, Portugal and Estonia. (see [EURO COVID-19 Dashboard](#) for recent trends).
- In four countries, the 14-day cumulative incidence increased compared to the previous week: Bulgaria, Greece, Bosnia and Herzegovina and Cyprus
- 75% of the deaths reported in week 24/2020 were from the United Kingdom, Russian Federation, Italy, France and Sweden
- The proportion of reported cases that died decreased from 4.4% in week 23/2020 to 3.3% in week 24/2020, a change that is likely due to a range of factors

Summary overview

- Ten countries in the Region each reported a cumulative incidence of ≥ 500 cases per 100,000 population: San Marino, Andorra, Luxembourg, Armenia, Belarus, Iceland, Spain, Belgium, Ireland and Sweden. Of these, Armenia, Belarus and Sweden reached a cumulative incidence of ≥ 500 cases per 100,000 population since week 23.
- 21% of all reported infections with information available were in a health care worker
- 76% of all ICU admissions were in persons aged 50-79 years of age, with 70% of all ICU admissions in men
- 70% of cumulative deaths were reported from the United Kingdom, Italy, France and Spain
- 90% of all deaths were in persons aged ≥ 65 years and 57% of all deaths were in men
- 95% of all deaths with information available had at least one underlying condition, with cardiovascular disease the leading comorbidity (65%)
- Following a period of a very substantial excess mortality observed in some countries coinciding with the COVID-19 pandemic, pooled estimates of all-cause mortality for the countries in the [EuroMOMO](#) network have now returned to normal levels. Excess mortality was observed primarily in the age group of ≥ 65 years, followed by the age group of 45-64 years and 15-44 years.
- In week 24/2020, no countries reported testing or COVID-19 detections in persons with influenza-like illness in primary care sentinel surveillance. The updated positivity rate in week 23/2020 was 9.6% (5 countries) compared to 5.7% (7 countries) in week 22/2020. The highest positivity was 15%, seen in week 13/2020
- As of 07 June 2020, five countries in the European region had an effective reproductive number significantly over 1: Albania, Israel, Kyrgyzstan, Turkey and Ukraine (See [EpiForecasts](#) and the CMMID COVID working group COVID-19 Global Summary for latest estimates)

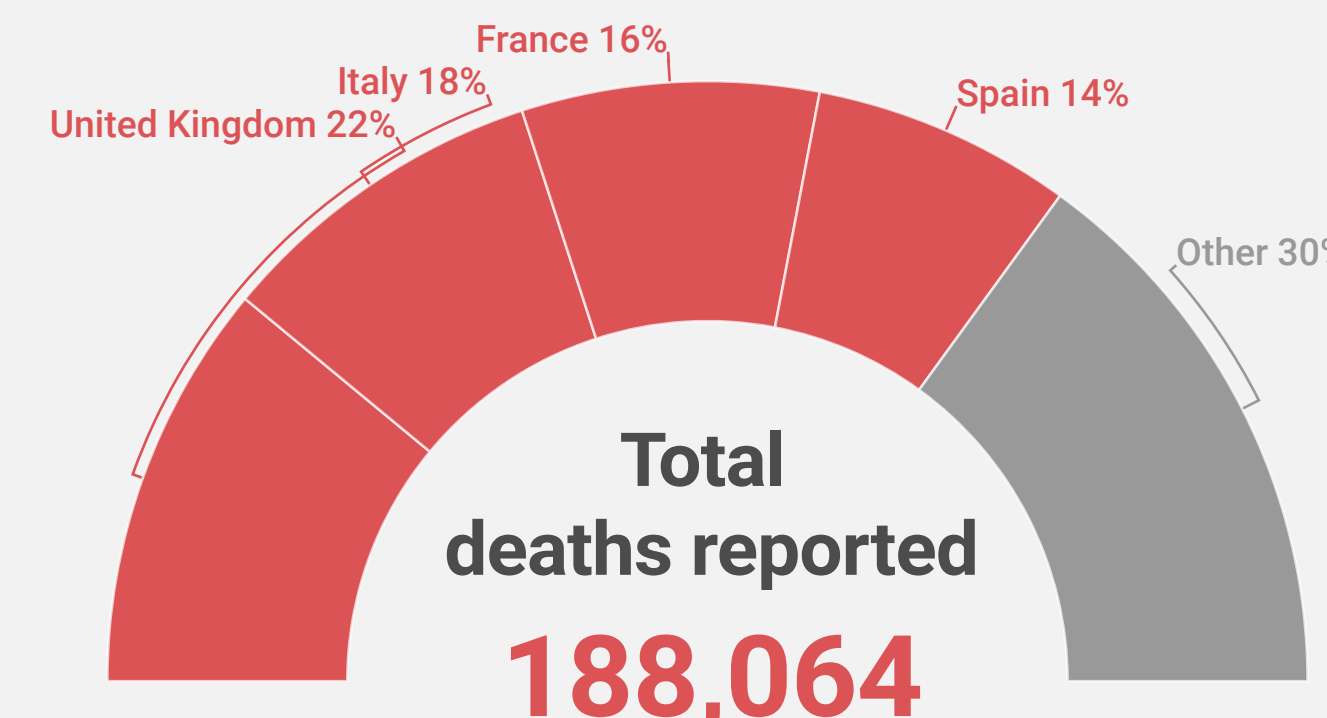
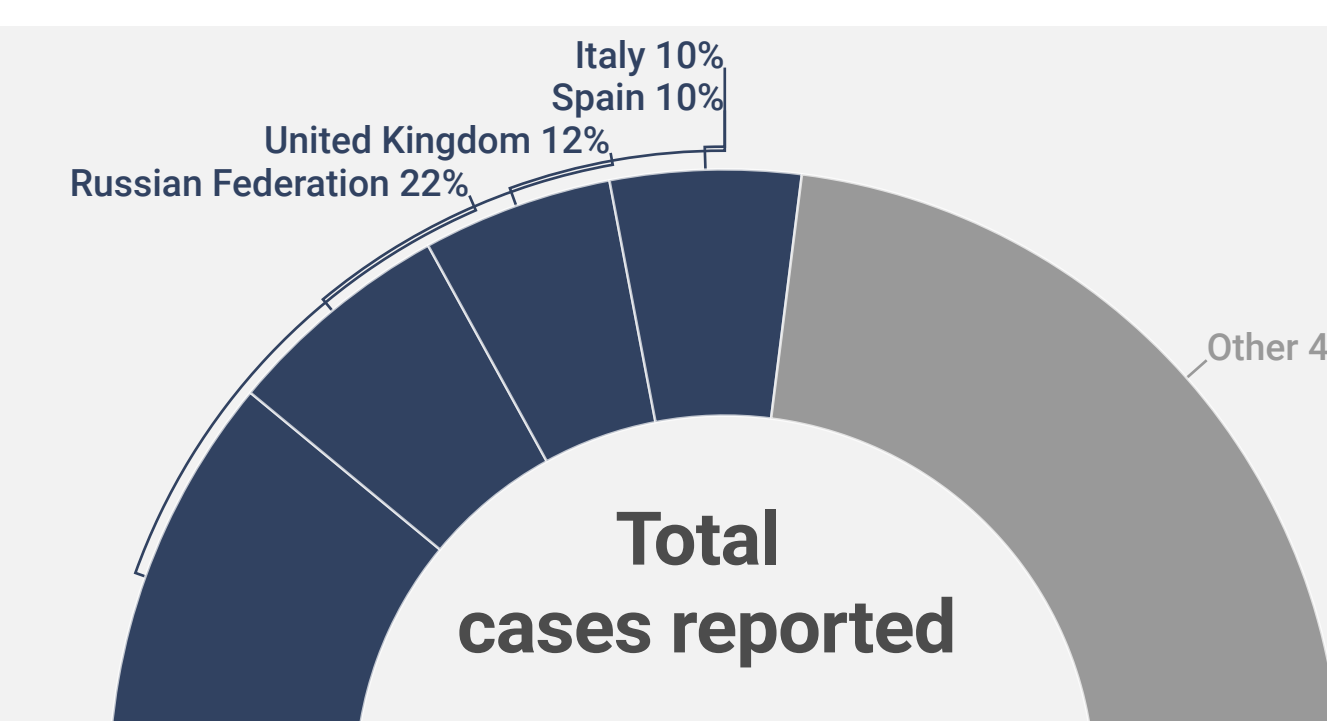
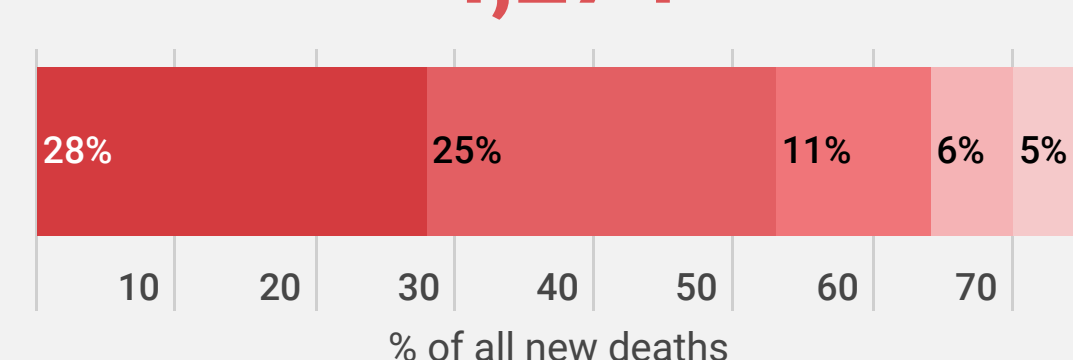
New cases Epi week 24

131,218



New deaths Epi week 24

4,274



21%
of all people infected were health care workers

95%
of all deaths had at least 1 underlying condition

57%
of all deaths were in men

76%
of all ICU admissions were people aged 50-79 years

90%
of all deaths were in persons aged 65+

65%
of all deaths had cardiovascular disease

For more detailed information see: [WHO Global situation reports](#) [WHO Global situation dashboard](#)

Figure 1: Number of COVID-19 cases (N=2,403,128) and deaths (N=188,064) by reporting week

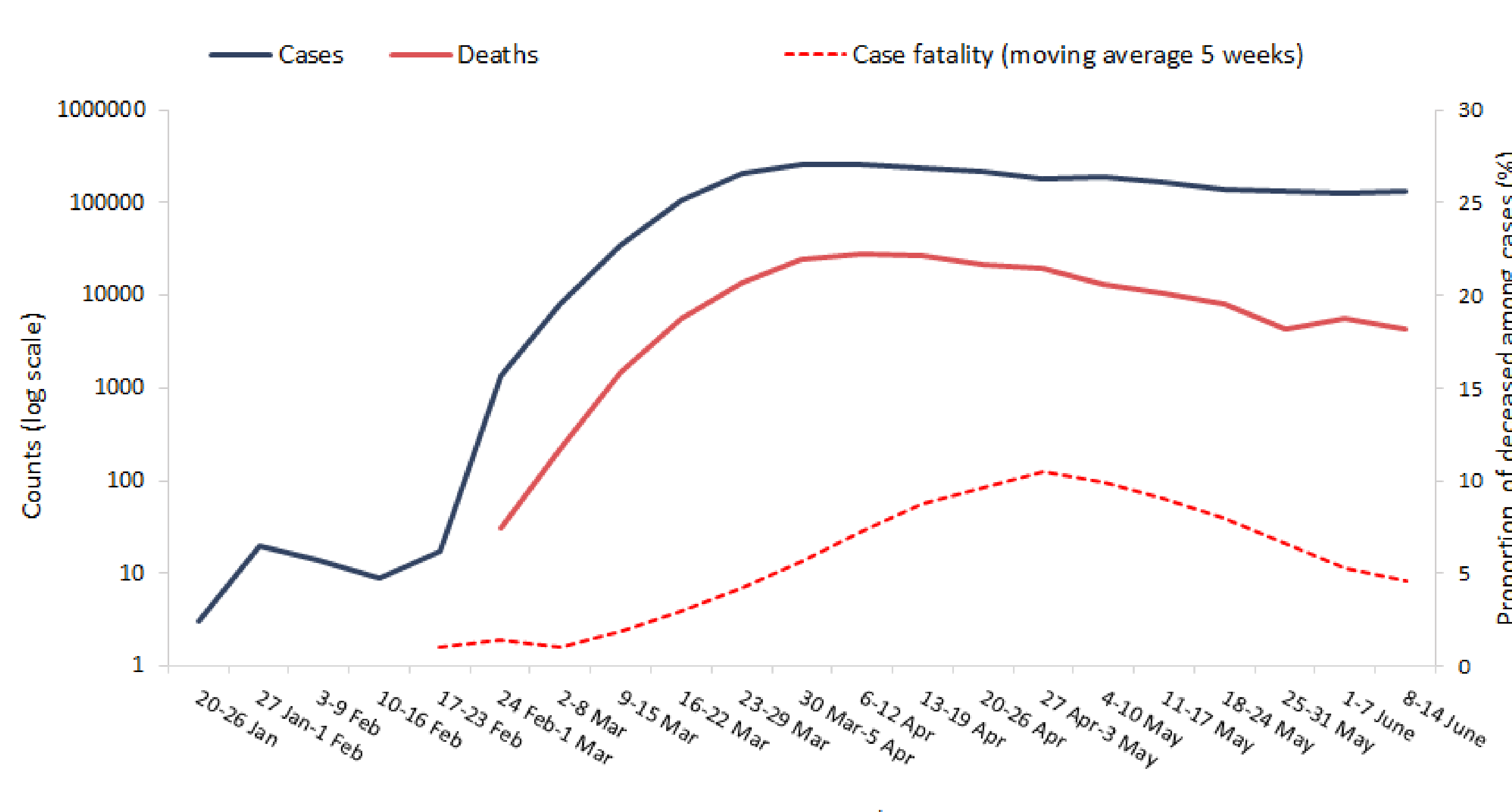


Figure 2A. COVID-19 incidence per 100,000 population and number of deaths by country for week 24

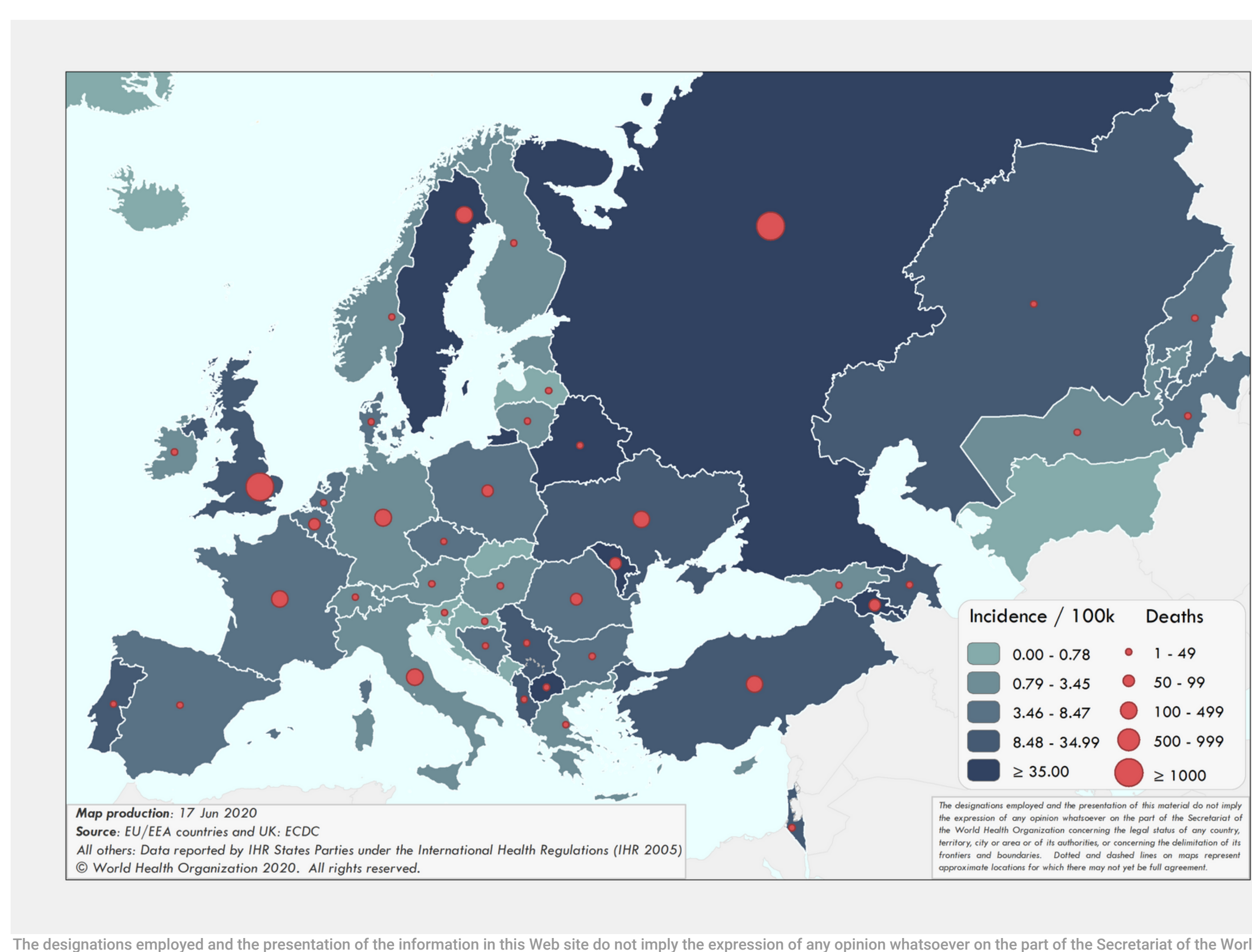


Figure 2B. COVID-19 cumulative incidence per 100,000 population and number of deaths by country

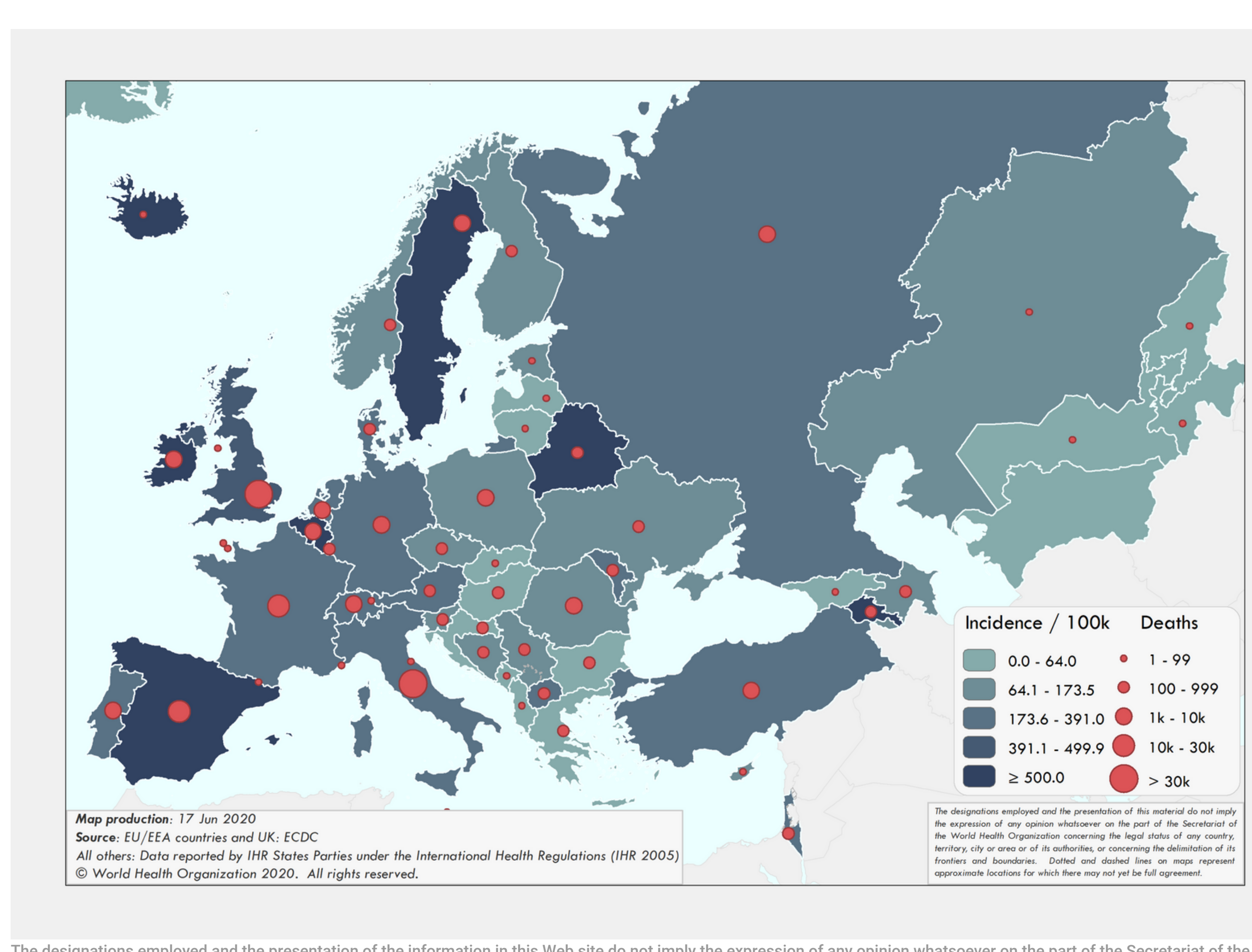
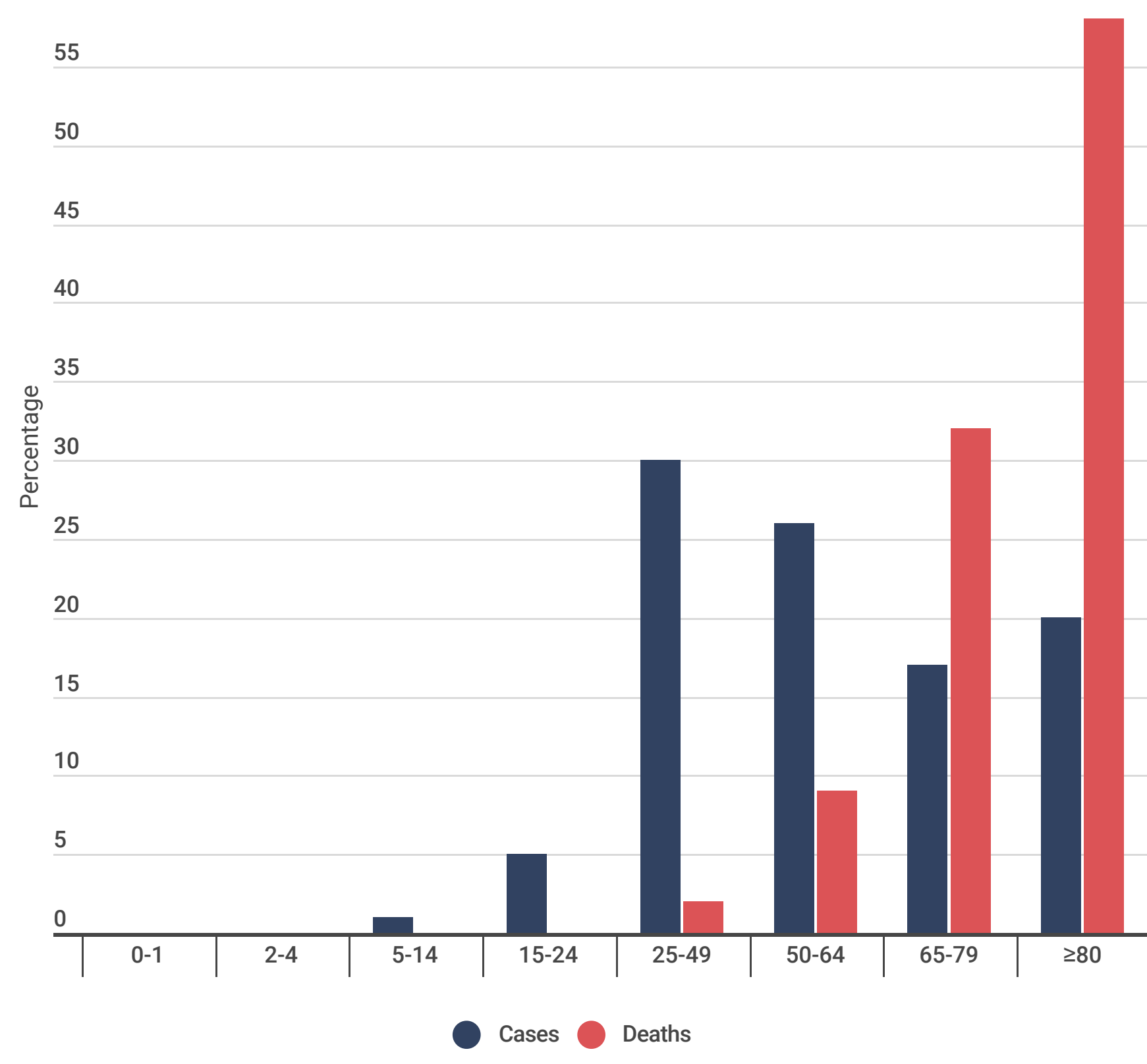


Figure 3. Percentage of COVID-19 cases (N=799,473) and deaths (N=109,935) by age group



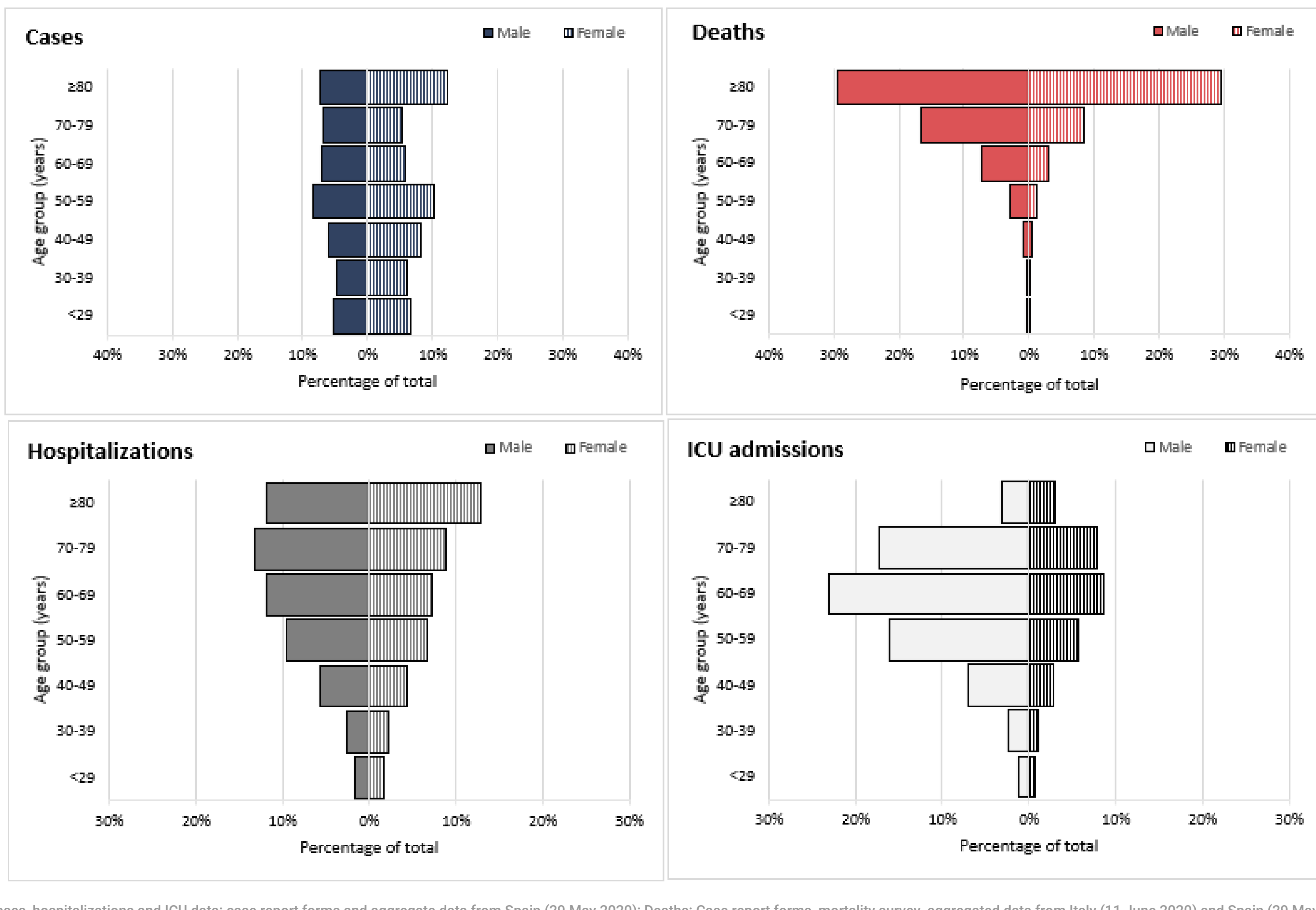
Source: Cases: Case-report forms and aggregate data from TESSy (Spain); Deaths: Case report forms, mortality survey, aggregated data from TESSy (Spain)

Table 1. Characteristics of COVID-19 cases and deaths

Characteristics	n	%	Total records with data available
Age in years, median (range)*	55 (1-105)		549,715
Sex, male*	254,428	46	547,677
Recovered*	204,918	91	225,873
Health care workers*	91,753	21	441,188
Hospitalization*	134,604	26	519,342
Intensive care unit admissions*	10,030	2	443,241
Age in years, median (range)*	82 (0-108)		118,113
Sex, male*	67,651	57	118,539
At least one underlying condition*	58,216	95	61,331
• cardiovascular disease	18,434	65	28,149
• diabetes	8,956	33	26,823
• lung disease	6,168	23	27,149
• neurological disease / dementia	2,397	25	9,495
• renal disease	1,709	20	8,730
• malignancy	991	26	3,884
• obesity	714	10	7,305
• liver disease	440	5	8,714
• immune disease	269	3	8,301
• other	12,730	51	25,117

Source: *Case report forms (n=552,193); #Case report forms and aggregated data from Italy (12/14 June) and Spain (29 May 2020, TESSy) (n=843,784); Health care workers refer to occupation and not to the place of exposure *Case report forms, mortality survey, aggregated data from Italy (11 June 2020) and Spain (28 May 2020) (n=118,113)

Figure 4. Percentage of COVID-19 cases (N=793,009), hospitalizations (N=140,690), ICU admissions (N=12,729) and deaths (N=118,516) by age group and sex



Source: Cases, hospitalizations and ICU data: case report forms and aggregate data from Spain (29 May 2020); Deaths: Case report forms, mortality survey, aggregated data from Italy (11 June 2020) and Spain (29 May 2020)

Figure 5. Percentage positive for COVID-19 in the ILI/ARI sentinel surveillance by reporting week

