

Best viewed using Chrome, Safari or Internet Explorer 9 or higher. If you are having trouble viewing this page please click here for the alternative viewer.

Key points

Week 25/2020 (15 - 21 Jun 2020)

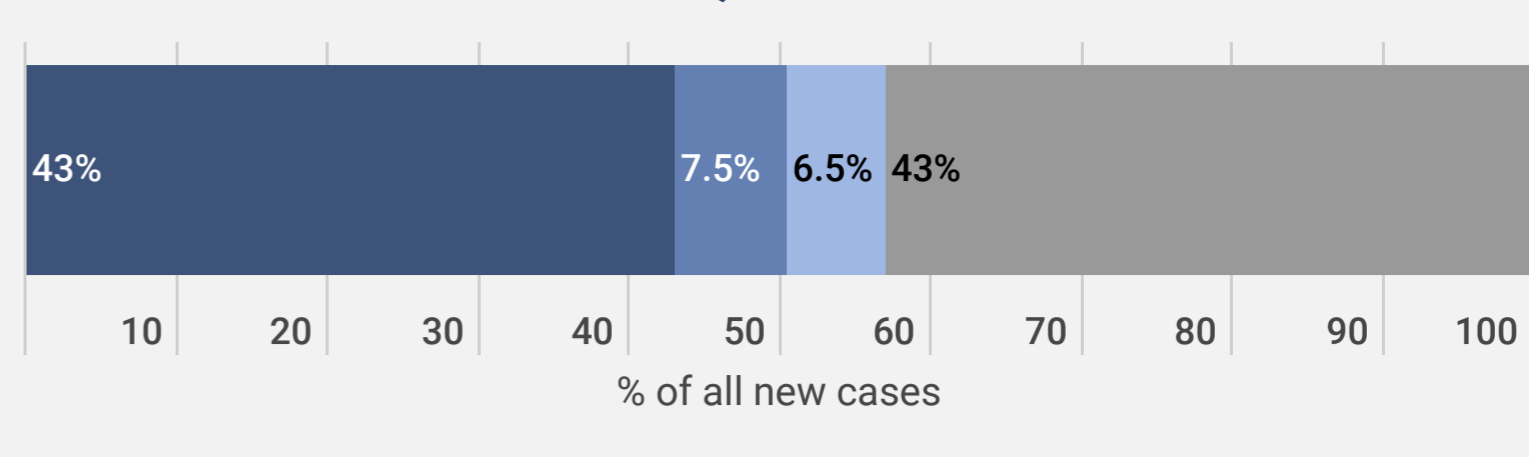
- The overall number of cases reported in the Region has declined by 50% since week 14/2020; the overall number of deaths has declined by 80% in the same time period
- 57% of the 130,017 cases in week 25/2020 were reported from three countries: the Russian Federation (23%; 55,716), Turkey (7.5%; 9816) and the United Kingdom (6.7%; 8735). The remaining cases (43%; 55,750) were reported by 48 countries; each accounted for <5% of the total cases reported in week 25/2020
- Seven countries had a crude incidence of ≥ 35 per 100,000 in week 25/2020: Armenia, Republic of Moldova, San Marino, North Macedonia, Sweden, Belarus and the Russian Federation. The crude incidence continues to vary across the region with a range from 0.3 per 100,000 population in Hungary to 121.7 per 100,000 population in Armenia
- In 27 countries, the 14-day cumulative incidence increased by $\geq 10\%$ in week 25/2020, however for some countries data was retro-adjusted by national authorities. In order of increase: Croatia, Iceland, Greece, Bulgaria, Malta, Israel, Bosnia and Herzegovina, Slovakia, Albania, North Macedonia, Slovenia, Uzbekistan, Kyrgyzstan, Republic of Moldova, Serbia, Ukraine, Luxembourg, Azerbaijan, Switzerland, Romania, Czech Republic, Turkey, Georgia, Portugal, Sweden, Poland and Armenia. (see [EURO COVID-19 Dashboard](#) for recent trends)
- 70% of the deaths reported in week 25/2020 were from Spain (23%; 1186), the Russian Federation (23%; 1163), the United Kingdom (18%; 927) and Italy (6%; 309). The remaining deaths (30%; 1514) were reported from 36 countries; each accounted for <5% of the total deaths reported in week 25/2020
- The proportion of reported cases that died increased from 3.3% in week 24/2020 to 3.9% in week 25/2020, a change that is likely due to a range of factors
- The number of countries and territories reporting community-transmission (29) has remained unchanged since week 24/2020 (see [EURO COVID-19 Dashboard](#))
- Since the emergence of COVID-19 virus in Europe at the end of January 2020, a wide range of public health and social measures (PHSM) have been implemented. See [EURO COVID-19 Dashboard \(NPI Explorer\)](#) for a snapshot of the temporal relationship between case and death numbers and the introduction and easing of these measures in some countries in the Region. Several countries have recently started gradual easing of these measures. Continued vigilance is recommended as countries in the Region continue to ease these measures.

Summary overview

- As of 11 June 2020, seven countries in the European region had an effective reproductive number significantly over 1: Kazakhstan*, Kyrgyzstan, Republic of Moldova*, Romania*, Sweden*, Turkey and Ukraine. (* increase since last update on 7 June 2020) (See [EpiForecasts and the CMMID COVID working group COVID-19 Global Summary](#) for latest estimates)
- Ten countries in the Region each reported a cumulative incidence of ≥ 500 cases per 100,000 population: San Marino, Andorra, Armenia, Luxembourg, Belarus, Sweden, Iceland, Spain, Belgium and Ireland
- As of week 25/2020, 75% of cumulative cases (1,908,411) were reported from the Russian Federation (23%; 584,680), United Kingdom (12%; 303,110), Spain (10%; 245,938), Italy (9%; 238,275), Germany (7%; 189,822), Turkey (7%; 186,493) and France (6%; 160,093). The remaining cases (25%; 624,734) were reported by 47 countries; each accounted for <5% of the total cases reported until week 25/2020
- 21% of all reported infections with information available were in a health care worker
- 76% of all ICU admissions were in persons aged 50-79 years of age, with 70% of all ICU admissions in men
- As of week 25/2020, 75% of cumulative deaths (144,850) were reported from the United Kingdom (22%; 42,589), Italy (18%; 34,610), France (15%; 29,633), Spain (15%; 28,322) and Belgium (5%; 9696). The remaining deaths (25%; 48,304) were reported by 49 countries; each accounted for <5% of the total cases reported until week 25/2020
- 90% of all deaths were in persons aged ≥ 65 years and 57% of all deaths were in men
- 95% of all deaths with information available had at least one underlying condition, with cardiovascular disease the leading comorbidity (66%)
- Following a period of a very substantial excess mortality observed in some countries coinciding with the COVID-19 pandemic, pooled estimates of all-cause mortality for the countries in the EuroMOMO network have now returned to normal levels. A few countries are still seeing some excess mortality. Excess mortality was observed primarily in the age group of ≥ 65 years, followed by the age group of 45-64 years and 15-44 years.
- In week 25/2020, one country reported 16 tests and 0 COVID-19 detections in persons with influenza-like illness in primary care sentinel surveillance. The updated positivity rate in week 24/2020 was 2.9% (5 countries) compared to 9.1% (7 countries) in week 23/2020. The highest positivity was 19%, seen in week 15/2020

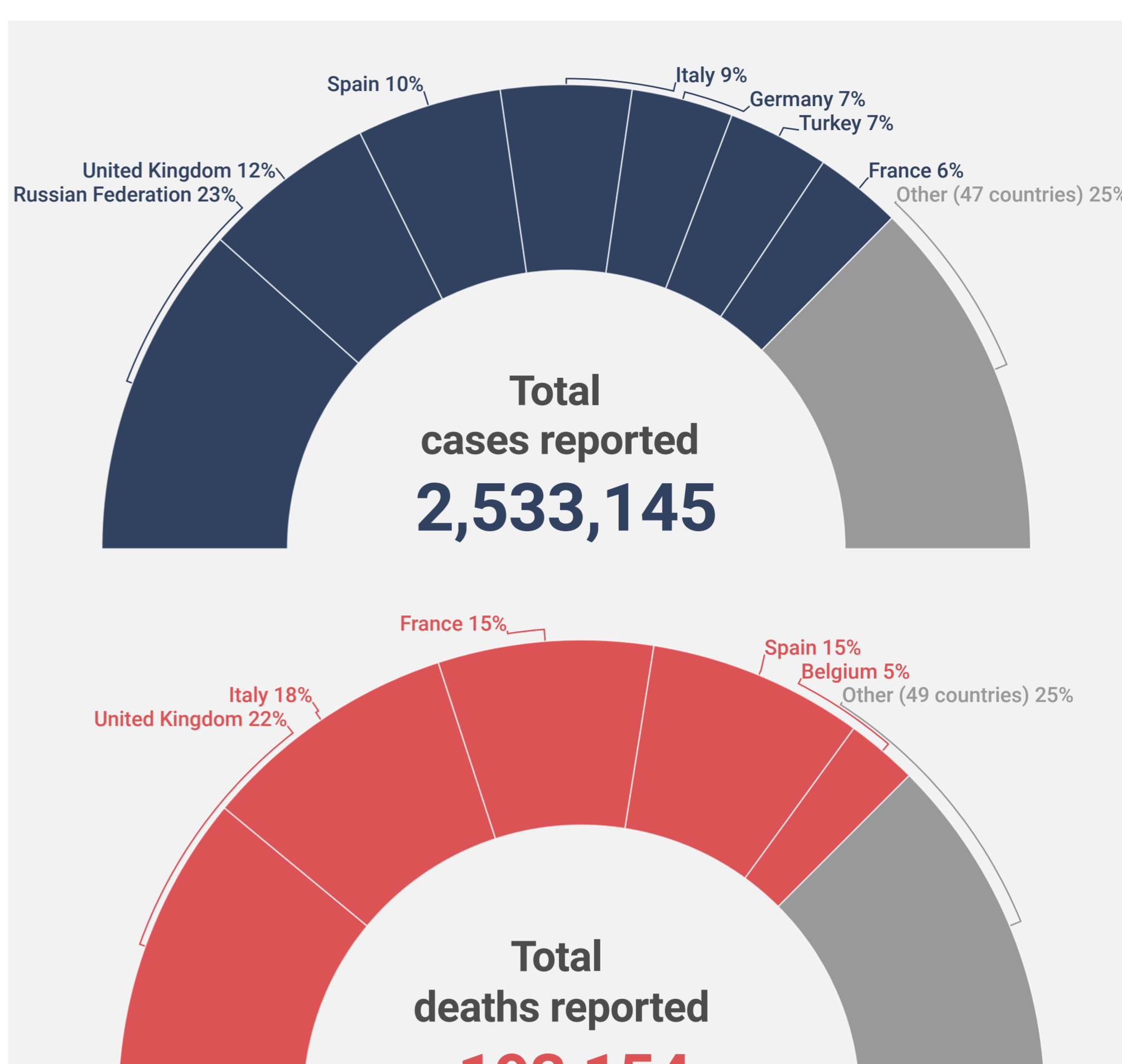
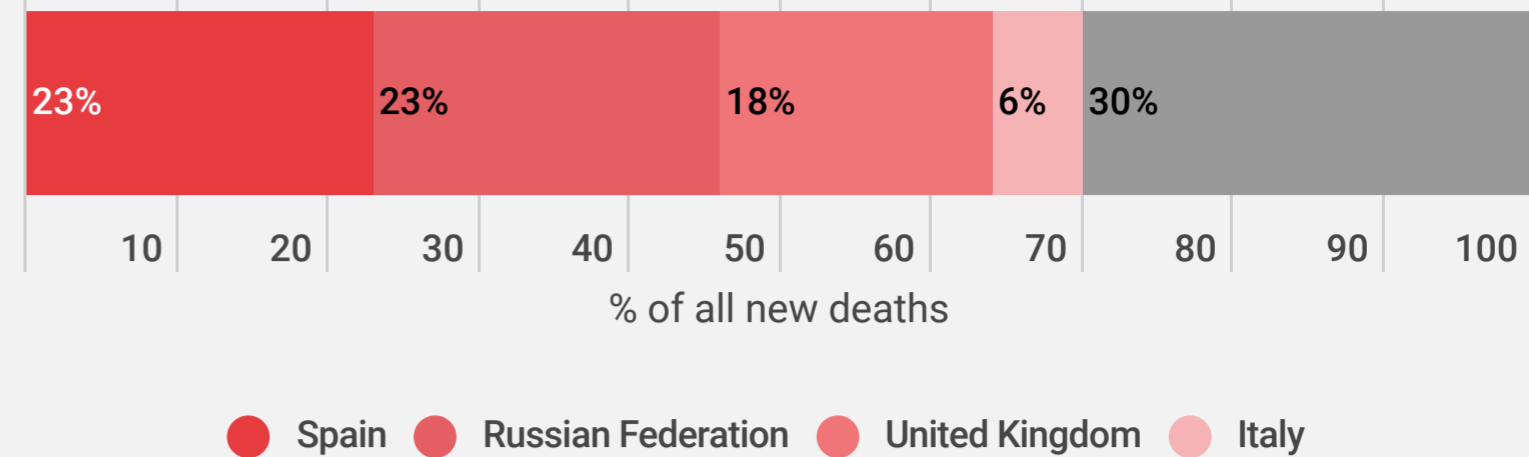
New cases Epi week 25

130,017



New deaths Epi week 25

5,099



- 21% of all people infected were health care workers
- 95% of all deaths had at least 1 underlying condition
- 57% of all deaths were in men
- 76% of all ICU admissions were people aged 50-79 years
- 90% of all deaths were in persons aged 65+
- 66% of all deaths had cardiovascular disease

For more detailed information see: [WHO Global situation reports](#) [WHO Global situation dashboard](#)

Figure 1: Number of COVID-19 cases (N=2,533,145) and deaths (N=193,154) by reporting week

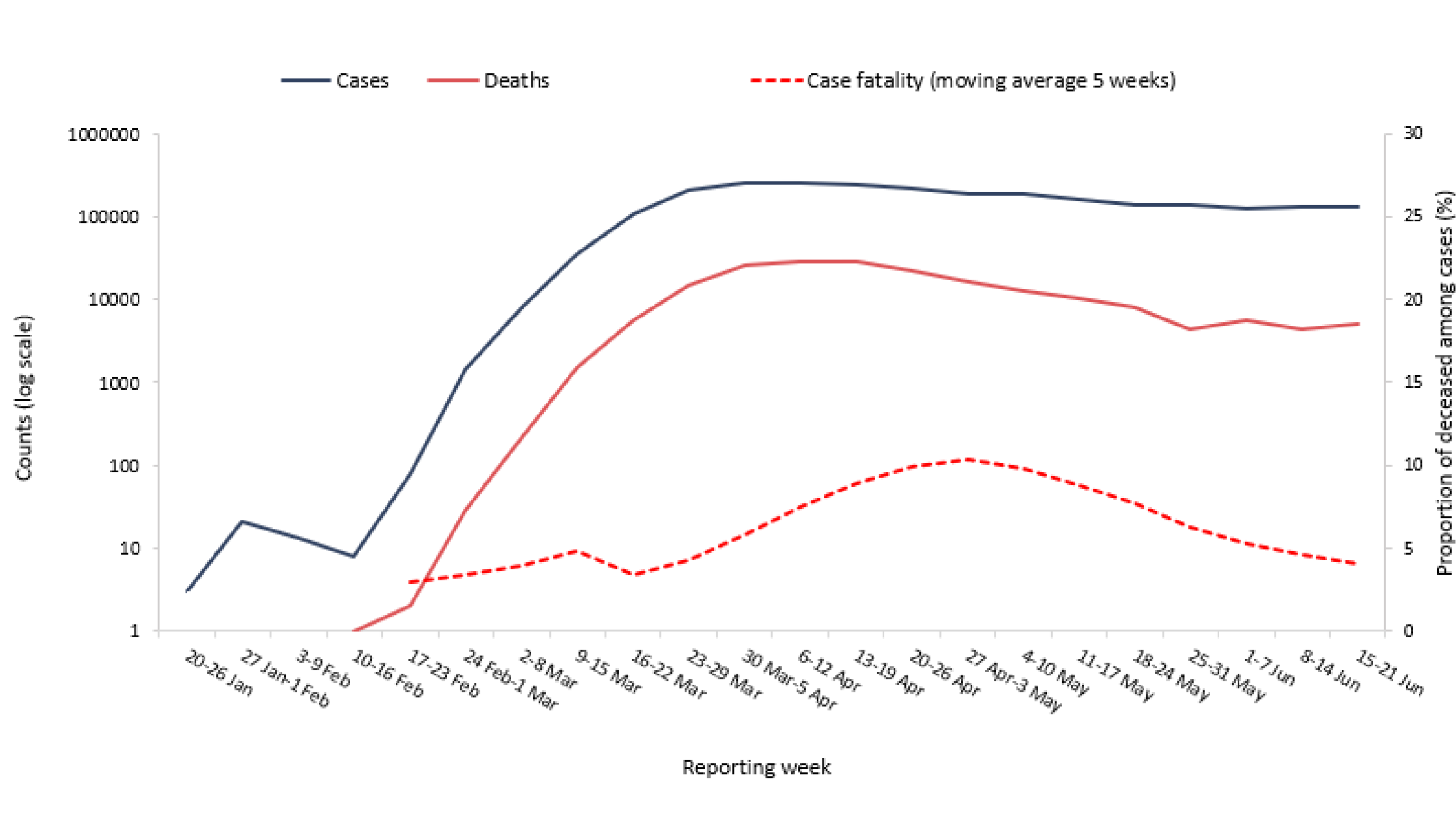


Figure 2A. COVID-19 incidence per 100,000 population and number of deaths by country for week 25

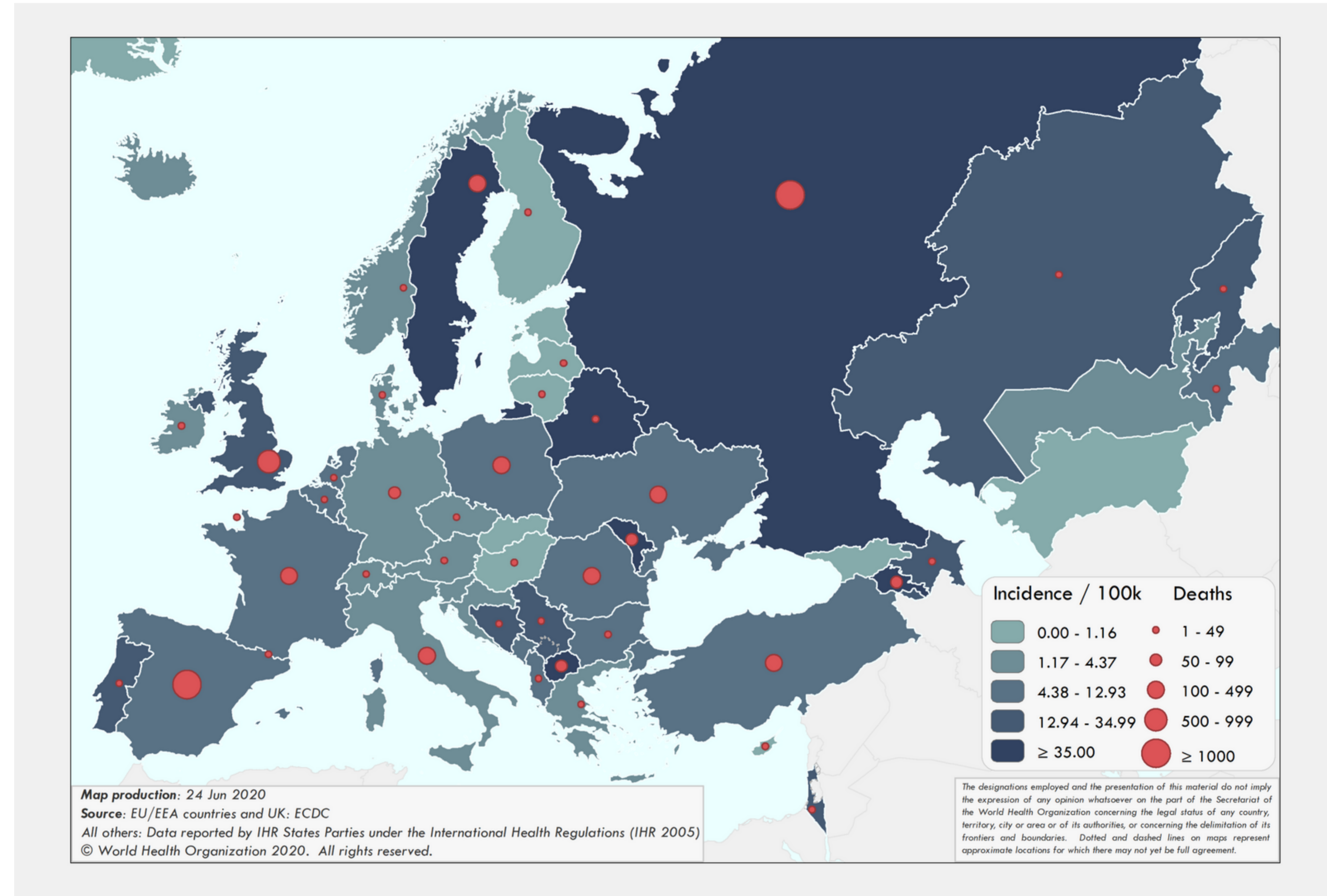


Figure 2B. COVID-19 cumulative incidence per 100,000 population and number of deaths by country

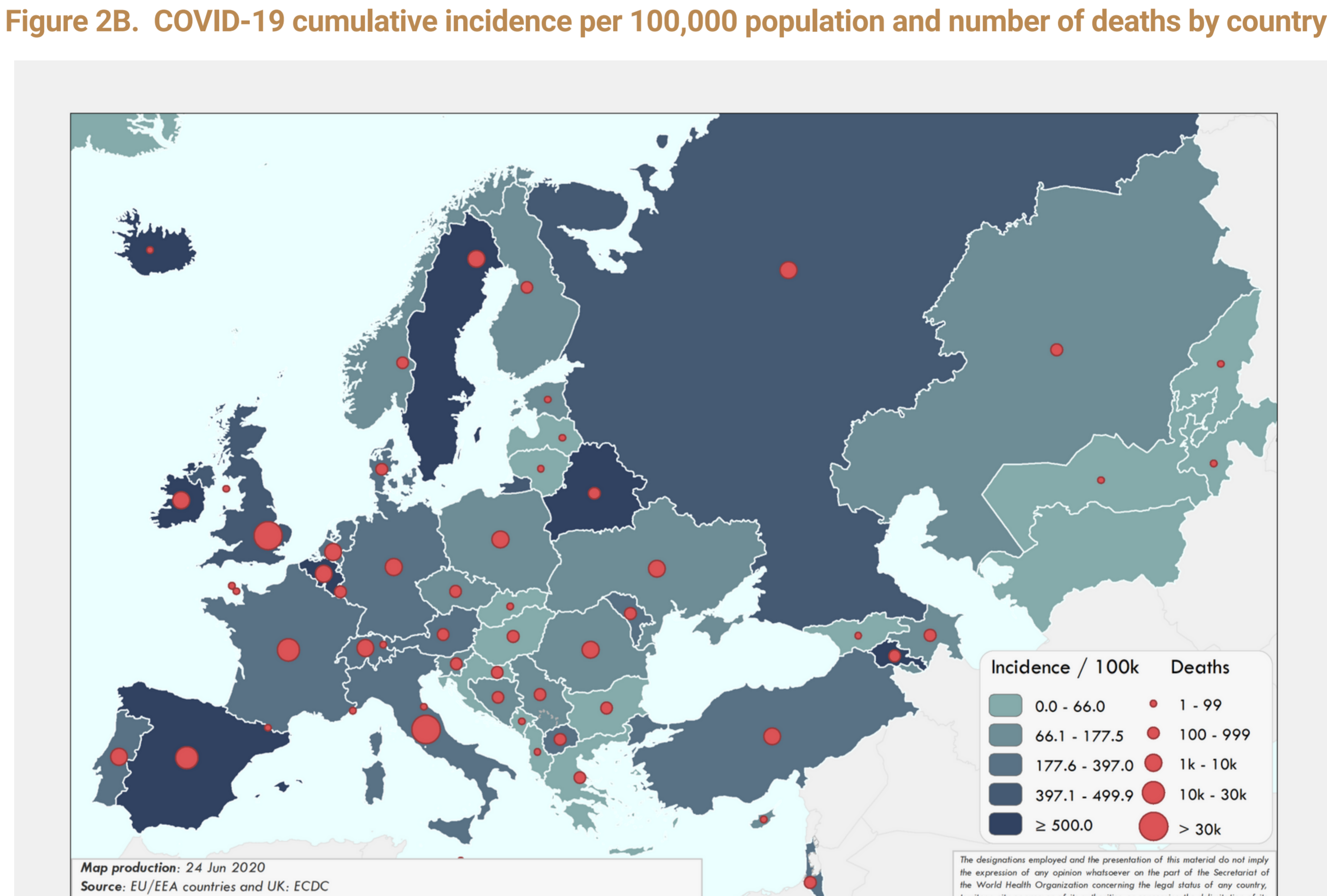


Figure 3. Percentage of COVID-19 cases (N=800,507) and deaths (N=118,013) by age group

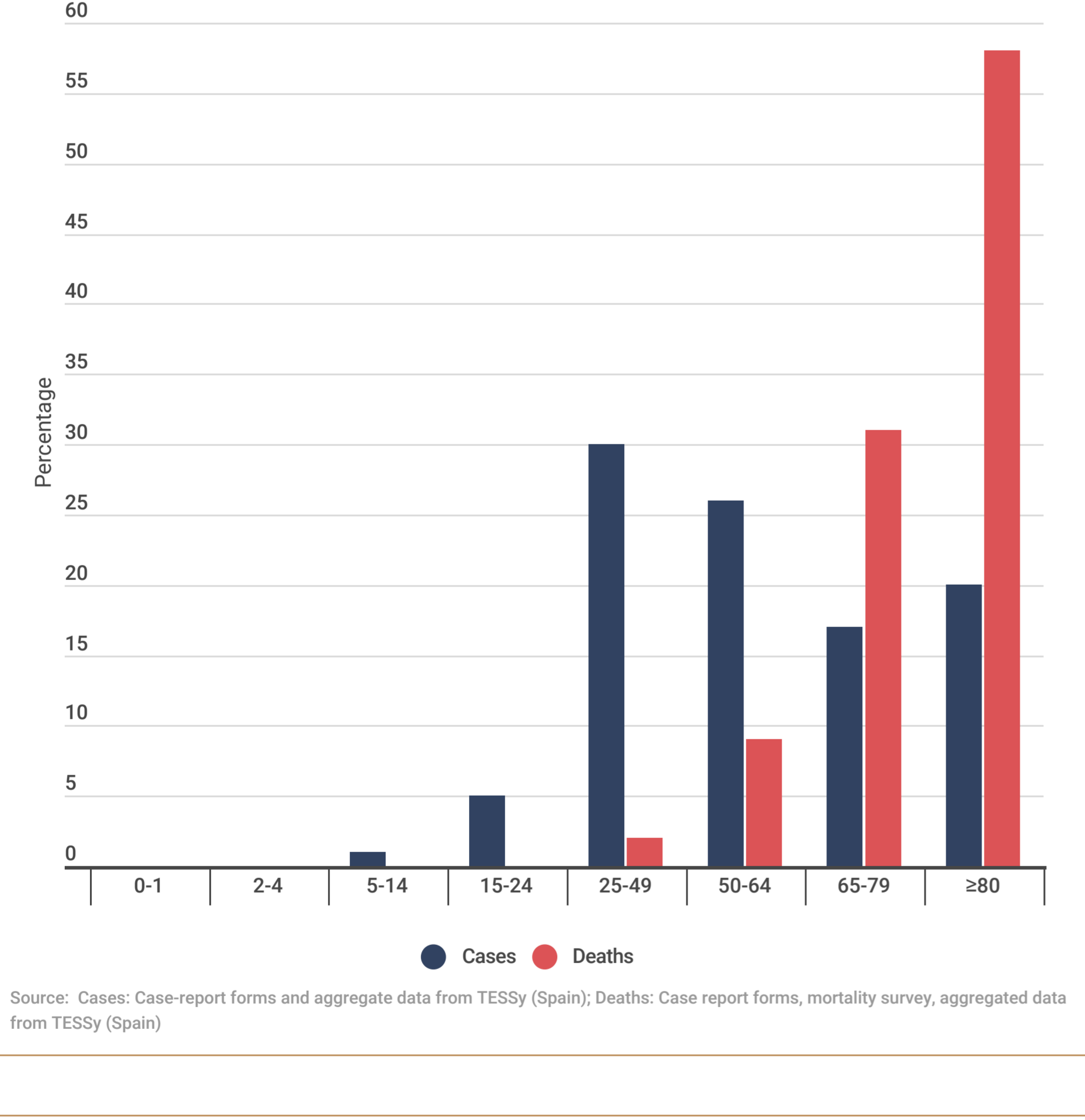


Table 1. Characteristics of COVID-19 cases and deaths

Characteristics	n	%	Total records with data available
Cases			
Age in years, median (range)*	55 (1-105)		550,750
Sex, male*	254,909	46	548,719
Recovered*	205,685	91	226,646
Health care workers*	92,274	21	443,487
Hospitalization*	141,727	27	526,031
Intensive care unit admissions*	10,689	2	449,017
Deaths			
Age in years, median (range)*	82 (0-108)		120,245
Sex, male*	68,412	57	120,145
At least one underlying condition*	58,217	95	61,399
• cardiovascular disease	18,607	66	28,391
• diabetes	9,036	33	27,060
• lung disease	6,210	23	27,383
• neurological disease / dementia	2,436	25	9,704
• renal disease	1,730	19	8,955
• malignancy	1,005	25	3,962
• obesity	723	10	7,315
• liver disease	453	5	8,957
• immune disease	275	3	8,284
• other	12,773	50	25,261

Figure 4. Percentage of COVID-19 cases (N=794,044), hospitalizations (N=140,690), ICU admissions (N=12,729) and deaths (N=120,107) by age group and sex

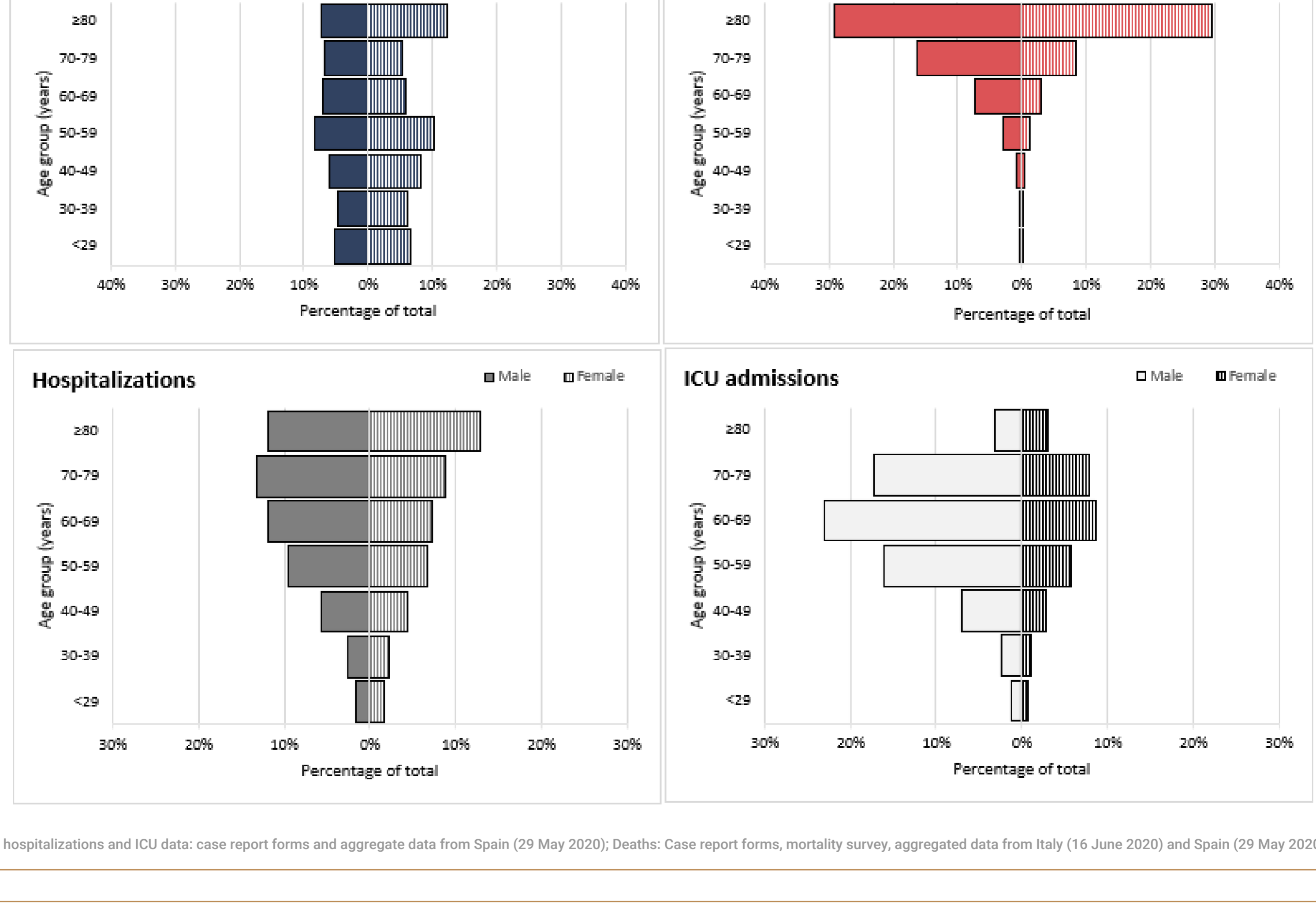


Figure 5. Percentage positive for COVID-19 in the ILI/ARI sentinel surveillance by reporting week

