

Best viewed using Chrome, Safari or Internet Explorer 9 or higher. If you are having trouble viewing this page please click here for the alternative viewer.

## Key points

### Week 42/2020 (12 -18 Oct 2020)

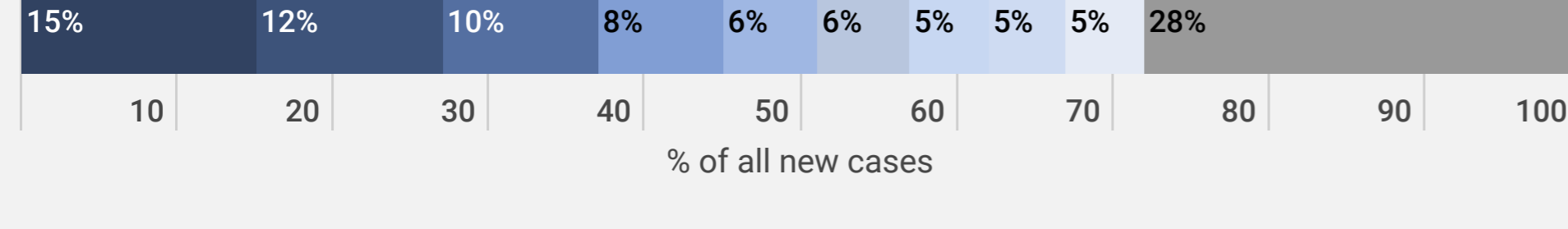
- The number of cases reported in the Region increased 31% to 976 058 in week 42/2020 compared to the previous week (743 784 cases in week 41/2020)
- 73% (710 996) of the cases reported in week 42/2020 were reported from nine countries: France (15%; 148 324), United Kingdom (12%; 114 584), Russian Federation (10%; 100 616), Spain (8%; 79 477), Belgium (6%; 62 828), Czech Republic (6%; 54 820), Italy (5%; 53 042), Netherlands (5%; 51 713) and Poland (5%; 45 592). The remaining cases (28%; 265 062) were reported by 50 countries and territories; each accounted for <5% of the total cases reported in week 42/2020
- The crude incidence continues to vary across the region, with a range from 3 per 100,000 population in Tajikistan to 1718 per 100,000 population in Holy See in week 42/2020
- Six countries had a crude incidence of  $\geq 200$  per 100 000 population in week 42/2020: Holy See (1718), Andorra (883), Belgium (545), Czech Republic (513), Netherlands (303), Armenia (279), Montenegro (278), Slovenia (235), France (228) and Liechtenstein (208) (Figure 2A). 27 countries had a crude incidence of  $\leq 100$  per 100 000 population in week 42/2020, up from 16 in week 41/2020
- The 14-day cumulative incidence increased by  $\geq 10\%$  in week 42/2020 in 49 countries and territories in the Region; an increase of  $\geq 50\%$  was observed in 38 of these countries and territories: Andorra, Armenia, Austria, Azerbaijan, Belarus, Belgium, Bosnia and Herzegovina, Bulgaria, Croatia, Cyprus, Czech Republic, Finland, France, Georgia, Germany, Gibraltar, Iceland, Ireland, Isle of Man, Italy, Jersey, Kyrgyzstan, Latvia, Liechtenstein, Luxembourg, Malta, Netherlands, North Macedonia, Poland, Portugal, Romania, Russian Federation, San Marino, Serbia, Slovakia, Slovenia, Switzerland and the United Kingdom (see [EURO COVID-19 Dashboard](#) for recent trends)
- The number of deaths in the Region in week 42/2020 increased by 29% to 8563 compared to the previous week (6616 deaths in week 41/2020) (Figure 1). The proportion of reported cases that died was 0.9% in week 42/2020
- 68% (5861) of the deaths reported in week 42/2020 were reported by the Russian Federation (19%; 1590), United Kingdom (10%; 819), France (8%; 708), Spain (8%; 657), Ukraine (7%; 635), Poland (6%; 552), Romania (5%; 454) and Turkey (5%; 446). The remaining deaths (32%; 2702) were reported from 41 countries and territories; each accounted for <5% of the total deaths reported in week 42/2020
- Community-transmission was reported by 34 countries and territories, 20 countries and territories reported cluster transmission, while 4 countries and territories reported sporadic transmission in week 42/2020
- For an interactive subnational view of the recent COVID-19 situation in the WHO-EURO Region see the [WHO-EURO COVID19 Subnational Explorer](#)

## Summary overview

- The cumulative cases across the Region increased 14% to 7 975 580 cases in week 42/2020 (from 6 999 522 cases in week 41/2020) and cumulative deaths increased by 3.5% to 256 217 deaths (from 247 654 deaths in week 41/2020)
- As of 7 October 2020, 25 countries in the Region had an effective reproductive number significantly over 1: Albania, Armenia, Austria, Azerbaijan, Belgium, Bulgaria, Croatia, Cyprus, Czech Republic, Germany, Ireland, Italy, Latvia, Liechtenstein, Netherlands, Poland, Portugal, Romania, Russian Federation, Serbia, Slovakia, Slovenia, Sweden, Switzerland and the United Kingdom (See [EpiForecasts](#) and the [CMMD COVID working group COVID-19 Global Summary](#) for latest estimates)
- 11 countries in the Region each reported a cumulative incidence of  $\geq 1600$  cases per 100,000 population: Andorra (4377), Israel (3550), Holy See (3190), Montenegro (2505), San Marino (2315), Armenia (2187), Spain (2071), Belgium (2034), Luxembourg (1701), Republic of Moldova (1649) and the United Kingdom (1614) (Figure 2B)
- As of week 42/2020, 59% (4 704 421) of cumulative cases were reported from the Russian Federation (18%; 1 399 334), Spain (12%; 967 952), France (11%; 867 197), United Kingdom (9%; 705 428), Italy (5%; 402 536) and Germany (5%; 361 974). The remaining cases (41%; 3 271 159) were reported by 55 countries and territories; each accounted for <5% of the total cases reported until week 42/2020
- As of week 42/2020, 67% of cumulative deaths (171 678) were reported from the United Kingdom (17%; 34 579), Italy (14%; 36 474), Spain (13%; 33 392) and the Russian Federation (9%; 24 187). The remaining deaths (33%; 84 539) were reported by 52 countries and territories; each accounted for <5% of the total cases reported until week 42/2020
- 14% of cases were in persons aged  $\geq 65$  years in week 42/2020, a decrease from 38% in week 14/2020, while the percentage of fatal cases aged  $\geq 65$  years was 75% in week 42/2020 (compared to 91% in week 14/2020) (Figure 3)
- 88% of all deaths with information available were in persons aged  $\geq 65$  years and 56% of all deaths were in men (Table 1). 96% of all deaths with information available had at least one underlying condition, with cardiovascular disease the leading comorbidity (83%) (Table 1)
- Pooled estimates of all-cause mortality for 24 countries in the EuroMOMO network show a slight increase in excess mortality, limited to a few countries.
- In week 42/2020, seven countries reported a total of 298 tests and 18 detections of SARS-CoV-2 in persons with influenza-like illness (ILI) in primary care sentinel surveillance (Figure 4)
- Overall, there were 707 605 COVID-19 cases among the total of 7 260 419 tests reported to have been performed in 30 countries in week 42/2020 (Figure 5)

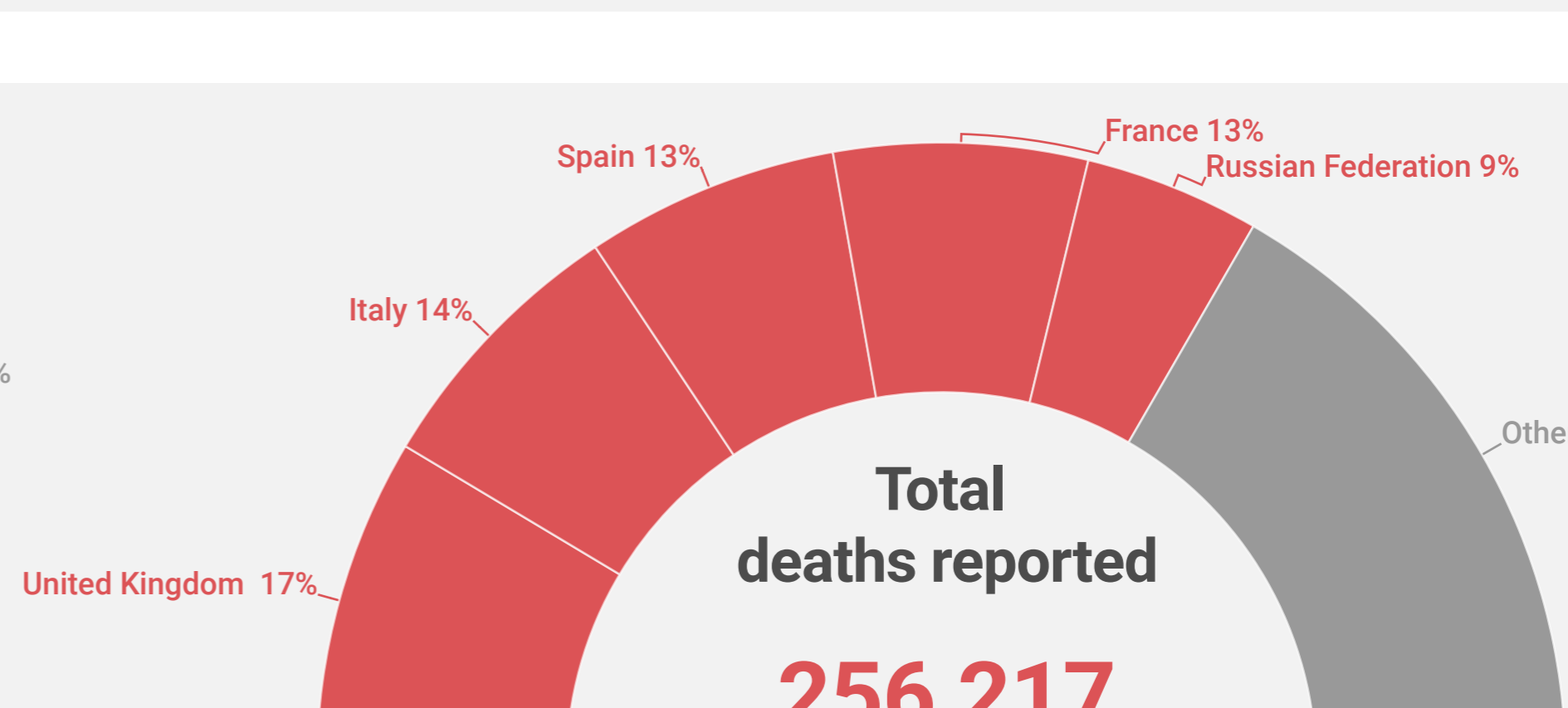
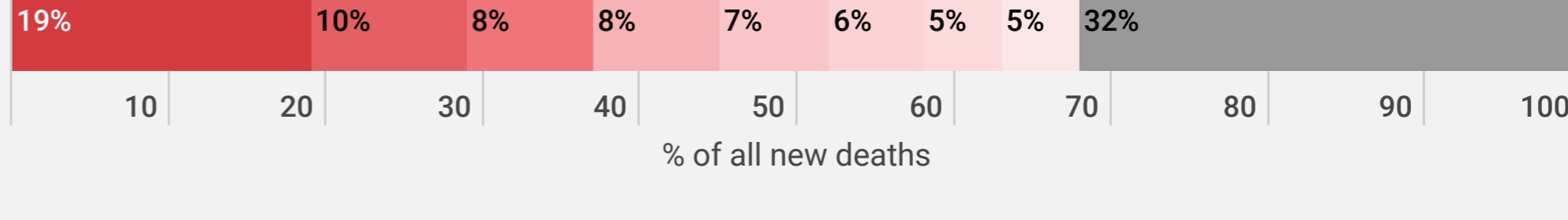
## New cases (week 42/2020)

976 058



## New deaths (week 42/2020)

8 563



**88%**  
of all deaths  
were in persons aged  $\geq 65$

**56%**  
of all deaths  
were in men

**96%**  
of all deaths  
had at least 1 underlying  
condition

**83%**  
of all deaths  
had cardiovascular disease

For more detailed information see: [WHO Global situation reports](#) [WHO Global situation dashboard](#)

Figure 1: Number of COVID-19 cases (N=7 975 580) and deaths (N=256 217) by reporting week

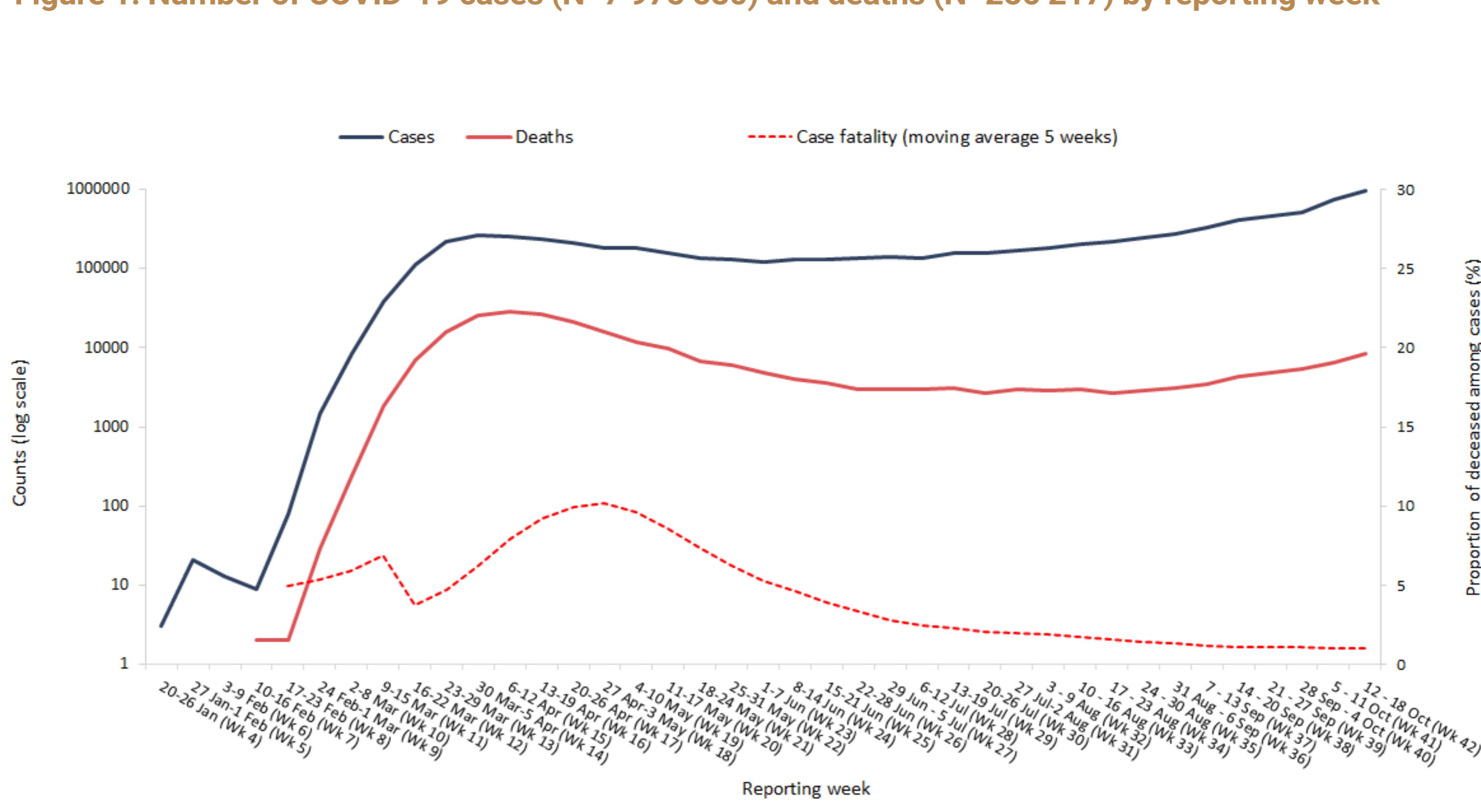


Figure 2A. COVID-19 incidence per 100,000 population and number of deaths by country for week 42

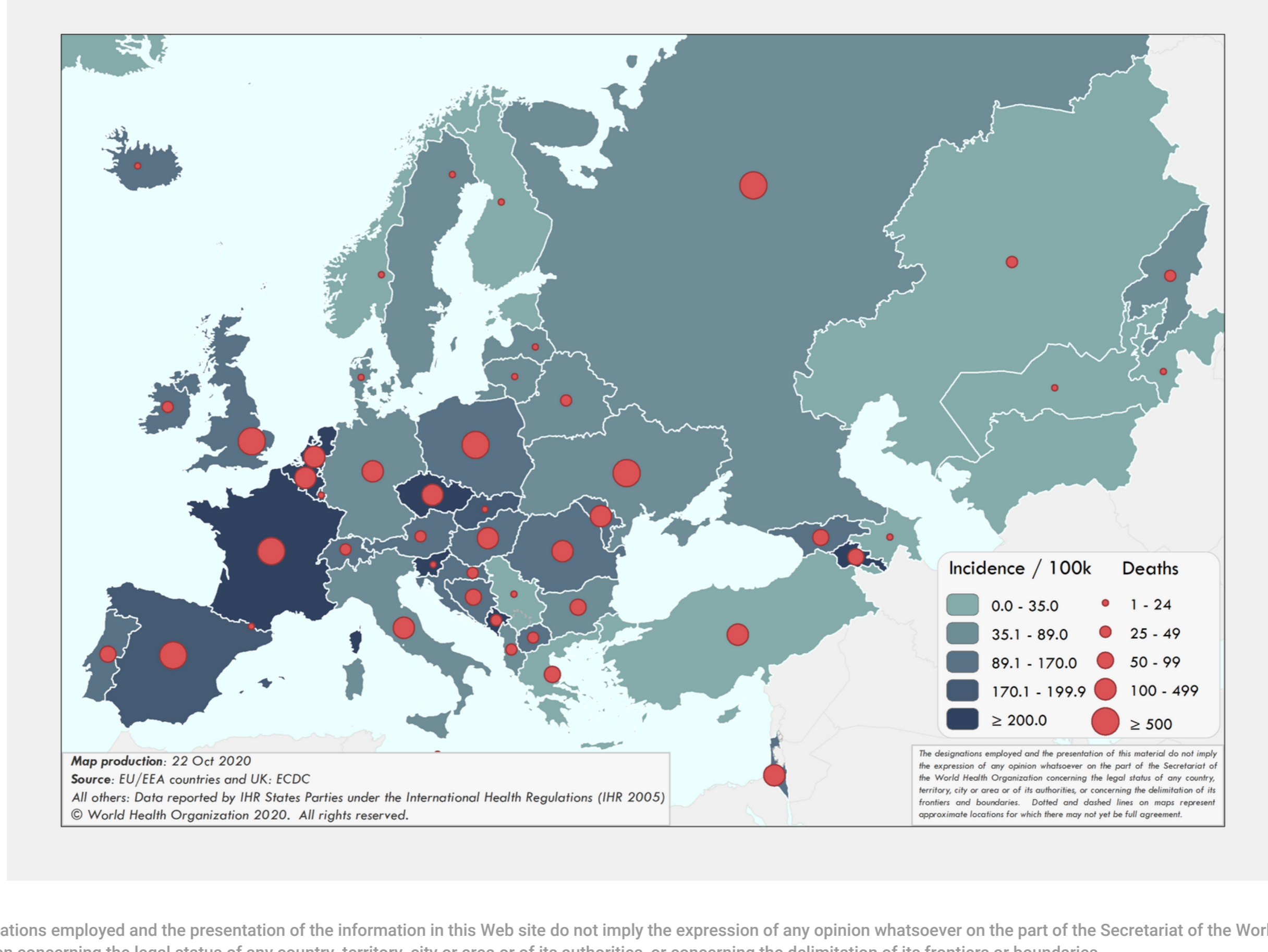


Figure 2B. COVID-19 cumulative incidence per 100,000 population and number of deaths by country

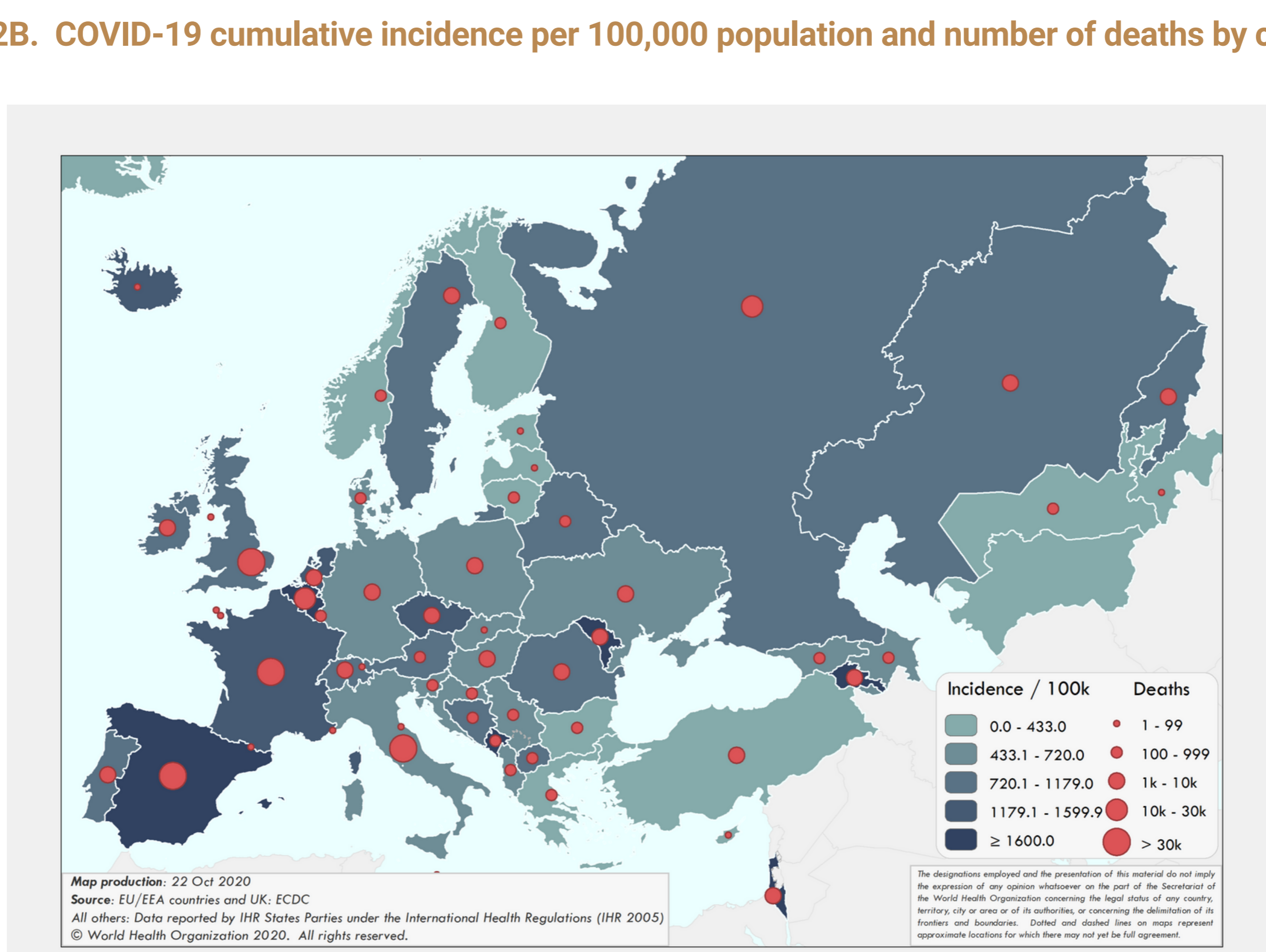
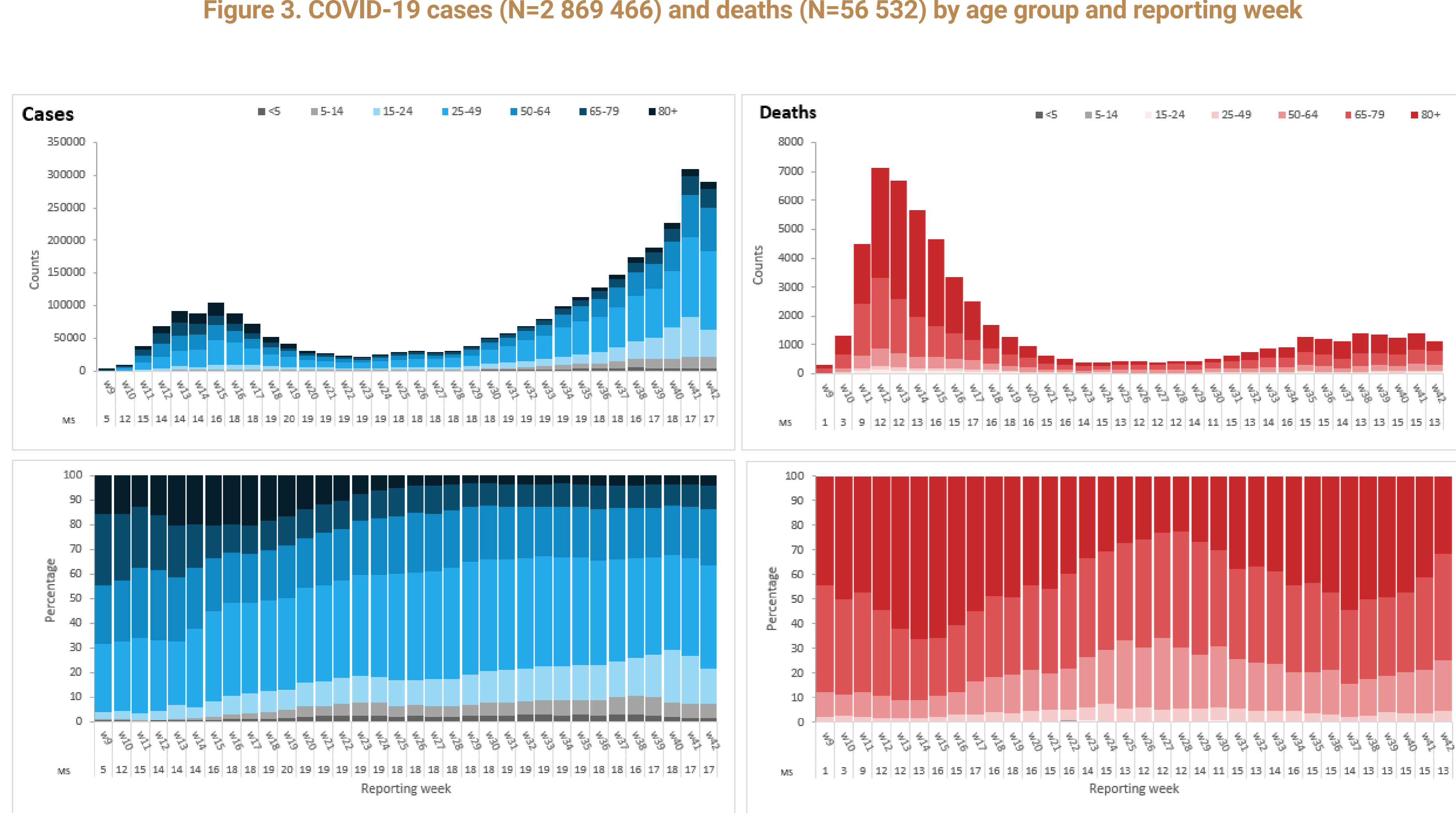


Table 1. Characteristics of COVID-19 deaths

Characteristics	n	%	Total records with data available
Age in years, median (range)	81 (0-109)		123,463
Sex, male	68,620	56	121,813
At least one underlying condition	56,800	96	59,350
• cardiovascular disease	15,124	83	18,253
• diabetes	5,430	64	8,511
• lung disease	2,048	23	8,866
• neurological disease / dementia	2,268	20	11,092
• renal disease	899	24	3,751
• obesity	706	11	6,648
• liver disease	701	7	10,473
• immune disease	332	5	6,908

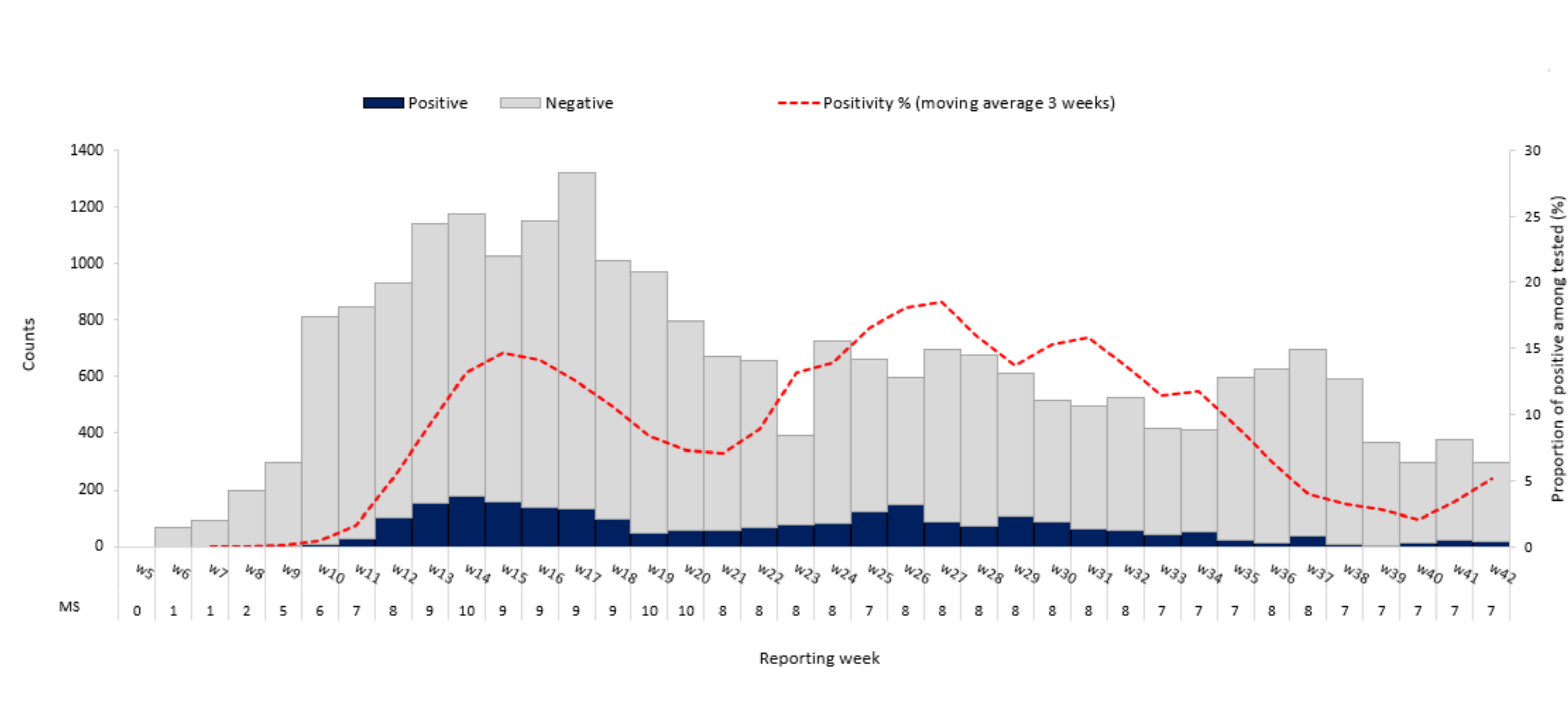
Source: Mortality database (n=123 506)

Figure 3. COVID-19 cases (N=2 869 466) and deaths (N=56 532) by age group and reporting week



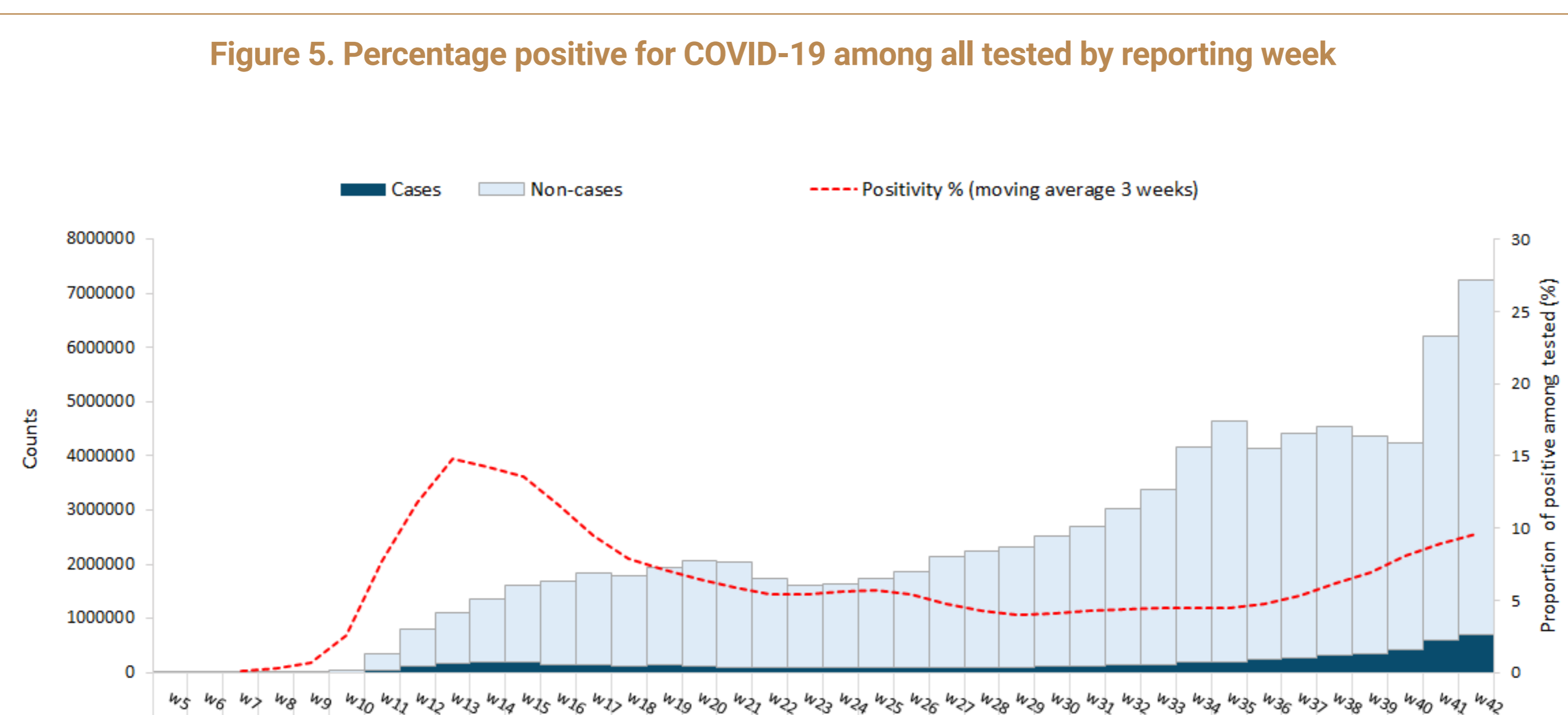
Source: Aggregate data from TESSy. MS: Member State

Figure 4. Percentage positive for COVID-19 in the ILI/ARI sentinel surveillance by reporting week



Source: Aggregate data from TESSy. MS: Member State

Figure 5. Percentage positive for COVID-19 among all tested by reporting week



Source: Aggregate data from TESSy. Note: Member States that report cases only (no testing data) are not included. MS: Member State