



INSTITUTIONAL FRAMEWORK	
Lead agency	Road Safety Unit, Ministry of Transport, Communications and Works
Funded in national budget	Yes
National road safety strategy	Yes
Funding to implement strategy	Partially funded
Fatality reduction target	50% (2012–2020)

SAFER ROADS AND MOBILITY	
Audits or star rating required for new road infrastructure	Partial
Design standards for the safety of pedestrians / cyclists	Yes
Inspections / star rating of existing roads	Yes
Investments to upgrade high risk locations	Yes
Policies & investment in urban public transport	Yes

SAFER VEHICLES	
Total registered vehicles for 2015	650 805
Cars and 4-wheeled light vehicles	487 692
Motorized 2- and 3-wheelers	39 282
Heavy trucks	121 119
Buses	2 712
Other	0

Vehicle standards applied (UNECE WP.29)	
Frontal impact standard	Yes
Electronic stability control	Yes
Pedestrian protection	Yes
Motorcycle anti-lock braking system	Yes

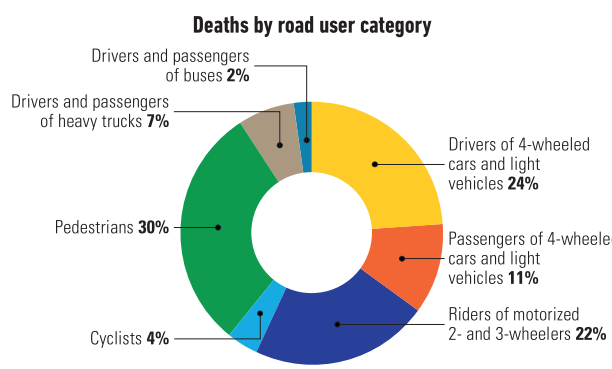
POST-CRASH CARE	
National emergency care access number	National, multiple numbers
Trauma registry	Subnational
Formal certification for prehospital providers	Yes
National assessment of emergency care systems	Yes

DATA	
Reported road traffic fatalities (2016)	46 ^a (78% M, 22% F)
Reported rate per 100 000 population (2016)	5.4 ^a
WHO estimated road traffic fatalities (2016)	60 ^b
WHO estimated rate per 100 000 population (2016)	5.1 ^b

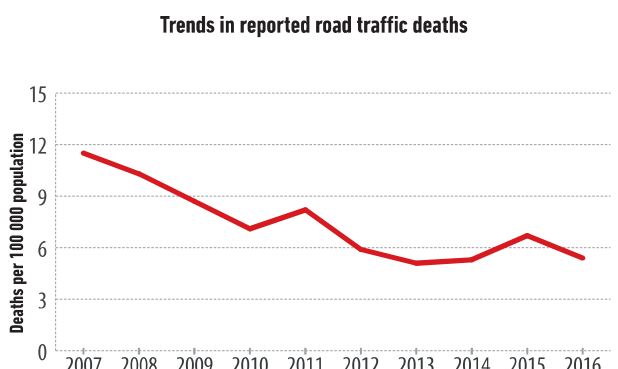
^a Cyprus Police. Died within 30 days of crash
^b WHO's method to obtain comparable country estimates: Group 1. Countries/areas with good death registration data. See explanatory note 3 in *Global status report on road safety 2018* for full details

SAFER ROAD USERS	
National speed limit law	Yes
Max urban speed limit	65 km/h
Max rural speed limit	No
Max motorway speed limit	100 km/h
Local authorities can modify limits	Yes
Self-reported enforcement	0 1 2 3 4 5 6 7 8 9 10
Predominant type of enforcement	Manual
National drink-driving law	Yes
BAC limit – general population	≤ 0.05 g/dl
BAC limit – young or novice drivers	≤ 0.02 g/dl
Random breath testing carried out	Yes
Testing carried out in case of fatal crash	All drivers tested
Self-reported enforcement	0 1 2 3 4 5 6 7 8 9 10
% road traffic deaths involving alcohol	17% ^c
National motorcycle helmet law	Yes
Applies to drivers and passengers	Yes
Helmet fastening required	Yes
Helmet standard referred to and/or specified	Yes
Children passengers on motorcycles	Prohibited under 12 yrs
Self-reported enforcement	0 1 2 3 4 5 6 7 8 9 10
Helmet wearing rate	75% Drivers ^d , 68% Passengers ^d
National seat-belt law	Yes
Applies to front and rear seat occupants	Yes
Self-reported enforcement	0 1 2 3 4 5 6 7 8 9 10
Seat-belt wearing rate	–
National child restraint law	Yes
Children seated in front seat	Allowed in a child restraint ^e
Child restraint required	Up to 135/150 cm ^f
Child restraint standard referred to and/or specified	Yes
Self-reported enforcement	0 1 2 3 4 5 6 7 8 9 10
% children using child restraints	–
National law on mobile phone use while driving	Yes
Ban on hand-held mobile phone use	Yes
Ban on hands-free mobile phone use	No
National drug-driving law	Yes

^c 2016, Cyprus Police
^d 2010, Cyprus Police
^e Provided that airbag is deactivated if child is in a rear-facing child restraint system
^f A child of height 135–150 cm can be restrained with an adult seat belt only provided that this child sits in the rear of the car



Source: 2016, Cyprus Police



Source: Cyprus Police and Cyprus Statistical Service