

# LUXEMBOURG



Population: 507 448  
 Income group: High  
 Gross national income per capita: US\$ 76 820

## INSTITUTIONAL FRAMEWORK

<b>Lead agency</b>	Ministry of Sustainable Development and Infrastructure
Funded in national budget	Yes
<b>National road safety strategy</b>	Yes
Funding to implement strategy	Yes, fully funded
Fatality reduction targets set	Yes (2011–2020)
Fatality reduction target	50%

## SAFER ROADS AND MOBILITY

<b>Formal audits required for new road construction</b>	Yes
<b>Regular inspections of existing road infrastructure</b>	Parts of network
<b>Policies to promote walking or cycling</b>	Yes
<b>Policies to encourage investment in public transport</b>	Yes
<b>Policies to separate road users to protect VRUs</b>	Yes

## SAFER VEHICLES

<b>Total registered vehicles (2010)</b>	444 353
Cars and 4-wheeled light vehicles	363 800
Motorized 2- and 3-wheelers	42 402
Heavy trucks	10 827
Buses	1 636
Other	25 688
<b>Vehicle standards applied</b>	
UN World forum on harmonization of vehicles standards	Yes
New car assessment programme	Yes
<b>Vehicle regulations</b>	
Front and rear seat-belts required in all new cars	— <sup>a</sup>
Front and rear seat-belts required all imported cars	Yes

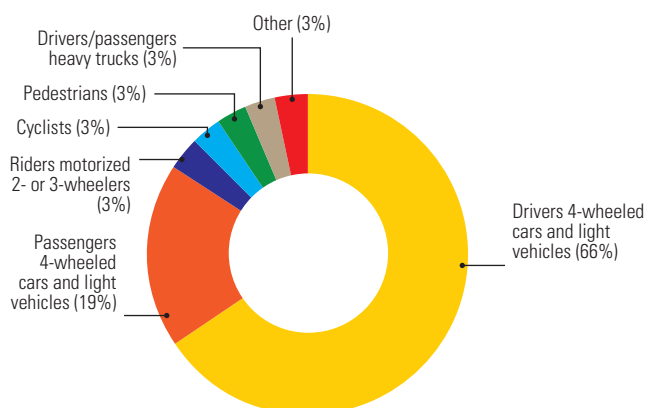
<sup>a</sup> No car manufacturers/assemblers.

## DATA

<b>Reported road traffic fatalities (2010)</b>	32 <sup>b</sup> , 75%M, 25%F
<b>Estimated GDP lost due to road traffic crashes</b>	—

<sup>b</sup> Police records. Defined as died within 30 days of crash.

## DEATHS BY ROAD USER CATEGORY



Source: 2010, STATEC/Police Grand-Ducale.

## SAFER ROAD USERS

<b>Penalty/demerit point system in place</b>	Yes
<b>National speed limits</b>	Yes
Local authorities can set lower limits	Yes
Maximum limit urban roads	50 km/h
Enforcement	0 1 2 3 4 5 6 7 8 9 10
<b>National drink-driving law</b>	Yes
BAC limit – general population	0.05 g/dl
BAC limit – young or novice drivers	0.02 g/dl
BAC limit – professional/commercial drivers	0.02 g/dl
Random breath testing and/or police checkpoints	No
Enforcement	0 1 2 3 4 5 6 7 8 9 10
% road traffic deaths involving alcohol	35% <sup>c</sup>
<b>National motorcycle helmet law</b>	Yes
Applies to drivers and passengers	Yes
Helmet standard mandated	Yes
Enforcement	0 1 2 3 4 5 6 7 8 9 10
Helmet wearing rate	—
<b>National seat-belt law</b>	Yes
Applies to front and rear seat occupants	Yes
Enforcement	0 1 2 3 4 5 6 7 8 9 10
Seat-belt wearing rate	78% Front seats <sup>d</sup> 60% Rear seats <sup>d</sup>
<b>National child restraint law</b>	Yes
Enforcement	0 1 2 3 4 5 6 7 8 9 10
<b>National law on mobile phones while driving</b>	Yes
Law prohibits hand-held mobile phone use	Yes
Law also applies to hands-free mobile phones	No

<sup>c</sup> 2010, STATEC/Police Grand-Ducale.

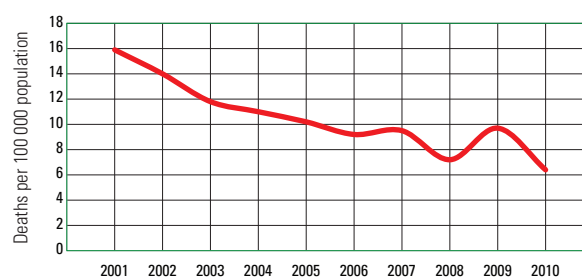
<sup>d</sup> 2003, Enquête ILReS : le port de la ceinture de sécurité au Luxembourg.

## POST-CRASH CARE

<b>Vital registration system</b>	Yes
<b>Emergency Room based injury surveillance system</b>	No
<b>Emergency access telephone number(s)</b>	112
<b>Seriously injured transported by ambulance</b>	≥75%
<b>Permanently disabled due to road traffic crash</b>	3.7% <sup>e</sup>
<b>Emergency medicine training for doctors</b>	Yes
<b>Emergency medicine training for nurses</b>	No

<sup>e</sup> Association for Accidents Insurance.

## TRENDS IN ROAD TRAFFIC DEATHS



Source: STATEC/Police Grand-Ducale.

Further data on each country can be found in the statistical annex.