

Measles and rubella elimination country profile

Andorra

Measles elimination status

2015 eliminated
2016 eliminated



Source: Regional Verification Commission for Measles and Rubella Elimination (RVC) meeting report (www.euro.who.int/6thRVC)

Rubella elimination status

2015 eliminated
2016 eliminated



Source: Regional Verification Commission for Measles and Rubella Elimination (RVC) meeting report (www.euro.who.int/6thRVC)

National plan of action

Does the country have a national plan of action?

ND

Is it updated? ND



Source: Rubella Elimination Annual Status Update report, 2016
ND = Data not available

Demographic information, 2016

Total population	69 165
< 1 year old	618
< 5 years old	3 066

Source: World Population Prospects: The 2015 Revision, New York, United Nations

Measles and rubella immunization schedule, 2016

	Vaccine	Schedule	Year of introduction	
MCV1	MMR	1 year	MCV2	1991
MCV2	MMR	3 years	RCV	1988
Measles vaccination in school				No

Source: Immunization schedule, WHO, Data and Statistics, Immunization Monitoring and Surveillance (http://www.who.int/immunization/monitoring_surveillance/data/en/)
MMR = measles-mumps-rubella-containing vaccine; MCV1 = first dose measles-containing vaccine; MCV2 = second dose measles-containing vaccine; RCV = rubella-containing vaccine

Definition used for an outbreak

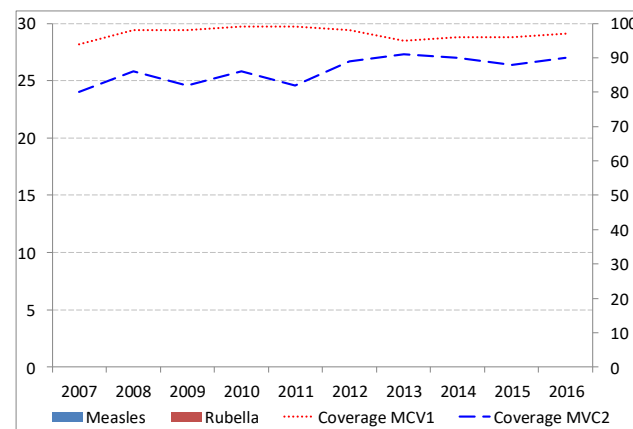
Two or more measles or rubella cases which are temporally related and epidemiologically linked, or both



Source: Measles and rubella elimination Annual Status Update report, 2016



Measles and rubella cases and immunization coverage, 2007–2016



Source: Disease incidence and immunization coverage, WHO, Data and Statistics, Immunization Monitoring and Surveillance (http://www.who.int/immunization/monitoring_surveillance/data/en/)
MCV1 = first dose of measles-containing vaccine
MCV2 = second dose of measles-containing vaccine

Information on CRS, 2016

No cases reported



Source: Measles and rubella elimination Annual Status Update report, 2016
CRS = congenital rubella syndrome

Measles and rubella elimination country profile

Andorra

Measles incidence, epidemiologic and virologic characteristics, 2012-2016

	Suspected measles cases	Confirmed measles cases				Discarded as non-measles	Measles incidence	Genotypes detected
		Laboratory	Epi- linked	Clinically	Total			
2012	0	0	0	0	0	0	0	NA
2013	1	0	0	0	0	1	0	NA
2014	1	0	0	0	0	1	0	NA
2015	0	0	0	0	0	0	0	NA
2016	0	0	0	0	0	0	0	NA

Source: Measles and rubella elimination Annual Status Update report, 2012-2016
Incidence calculated per 1 million population
ND = Data not available; NA= Not applicable

Measles surveillance and laboratory performance indicators, 2012-2016

	Discarded non-measles rate	% 1st sub-national unit with > 2 discarded cases	% cases with adequate laboratory investigation	% origin of infection known	# specimen tested for measles	% positive for measles	Rate of viral detection	% WHO and proficient labs
2012	NA	NA	NA	NA	0	0	NA	NA
2013	NA	ND	NA	NA	1	0	NA	NA
2014	NA	ND	NA	NA	1	0	NA	NA
2015	NA	NA	NA	NA	0	0	NA	NA
2016	NA	NA	NA	NA	0	0	NA	NA

Source: ASU 2012-2016, MeaNS 2012-2016 and laboratory accreditation results 2012-2016
ND = Data not available; NA= Not applicable
A proficient laboratory is WHO accredited and/or has an established quality assurance programme with oversight by a WHO accredited laboratory

Rubella incidence, epidemiologic and virologic characteristics, 2012-2016

	Suspected rubella cases	Confirmed measles cases				Discarded as non-rubella	Rubella incidence	Genotypes detected
		Laboratory	Epi- linked	Clinically	Total			
2012	0	0	0	0	0	0	0	NA
2013	0	0	0	0	0	0	0	NA
2014	0	0	0	0	0	0	0	NA
2015	0	0	0	0	0	0	0	NA
2016	0	0	0	0	0	0	0	NA

Source: Measles and rubella elimination Annual Status Update report, 2012-2016
Incidence calculated per 1 million population
ND = Data not available; NA= Not applicable

Rubella surveillance and laboratory performance indicators, 2012-2016

	Discarded non-rubella rate	% 1st sub-national unit with > 2 discarded cases	% cases with adequate laboratory investigation	% origin of infection known	# specimen tested for rubella	% positive for rubella	Rate of viral detection	% WHO and proficient labs
2012	NA	NA	NA	NA	NA	NA	NA	NA
2013	NA	NA	NA	NA	NA	NA	NA	NA
2014	NA	NA	NA	NA	NA	NA	NA	NA
2015	NA	NA	NA	NA	NA	NA	NA	NA
2016	NA	NA	NA	NA	NA	NA	NA	NA

Source: ASU 2012-2016, RubENS 2012-2016 and laboratory accreditation results 2012-2016
ND = Data not available; NA= Not applicable
A proficient laboratory is WHO accredited and/or has an established quality assurance programme with oversight by a WHO accredited laboratory

RVC comments, based on 2016 reporting

The Regional Verification Commission for Measles and Rubella Elimination (RVC) concluded that endemic transmission of both measles and rubella remained interrupted in Andorra in 2016, and confirmed that measles and rubella elimination has been sustained. The RVC acknowledges the country's efforts to provide all required information in the ASU and the increase in MRCV2 coverage in 2016. The RVC urges the national health authorities to consider additional activities to further increase MRCV2 coverage.

Source: Regional Verification Commission for Measles and Rubella Elimination (RVC) meeting report (www.euro.who.int/6thRVC)

Surveillance performance indicators and targets

- Rate of discarded cases: at least 2 discarded measles or rubella cases per 100 000 population
- % cases with adequate laboratory investigation: $\geq 80\%$
- % origin of infection known: $\geq 80\%$
- Rate of viral detection: $\geq 80\%$