

Best viewed using Chrome, Safari or Internet Explorer 9 or higher. If you are having trouble viewing this page please click here for the alternative viewer.

Key points

Week 41/2020 (5 - 11 Oct 2020)

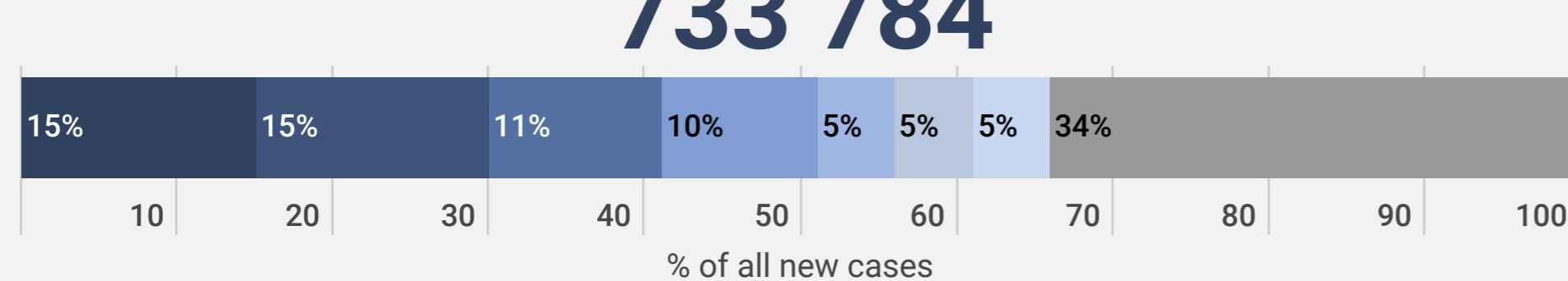
- The number of cases reported in the Region increased 42% to 733 784 in week 41/2020 compared to the previous week (518 517 cases in week 40/2020)
- 66% (482 888) of the cases reported in week 41/2020 were reported from seven countries: France (15%; 112 248), United Kingdom (15%; 83 717), Russian Federation (11%; 83 717), Spain (10%; 69 792), Netherlands (5%; 36 333), Belgium (5%; 35 399) and Ukraine (5%; 34 572). The remaining cases (34%; 250 896) were reported by 53 countries and territories; each accounted for <5% of the total cases reported in week 41/2020
- The crude incidence continues to vary across the region with a range from 3.1 per 100,000 population in Tajikistan to 760 per 100,000 population in Andorra in week 41/2020
- Six countries had a crude incidence of ≥ 200 per 100 000 population in week 41/2020: Andorra (760), Israel (315), Belgium (307), Montenegro (276), Czech Republic (269), and the Netherlands (213) (Figure 2A). 16 countries had a crude incidence of ≥ 100 per 100 000 population in week 41/2020, up from ten in week 40/2020
- The 14-day cumulative incidence increased by $\geq 10\%$ in week 41/2020 in 42 countries and territories in the Region; an increase of $\geq 50\%$ was observed in 31 of these countries and territories: Andorra, Armenia, Belarus, Belgium, Bulgaria, Cyprus, Czech Republic, Finland, Georgia, Germany, Gibraltar, Iceland, Ireland, Isle of Man, Italy, Jersey, Kyrgyzstan, Latvia, Liechtenstein, Lithuania, Netherlands, North Macedonia, Poland, Romania, Russian Federation, San Marino, Slovakia, Slovenia, Sweden, Switzerland and the United Kingdom (see [EURO COVID-19 Dashboard](#) for recent trends)
- The number of deaths in the Region in week 41/2020 increased 17% to 6 397 compared to the previous week (5 460 deaths in week 40/2020) (Figure 1). The proportion of reported cases that died was 0.9% in week 41/2020
- 71% (4 566) of the deaths reported in week 41/2020 were reported by the Russian Federation (19%; 1 239), Spain (10%; 650), Ukraine (9%; 575), France (8%; 486), United Kingdom (7%; 443), Romania (6%; 411), Turkey (6%; 394) and Poland (2%). The remaining deaths (29%; 1 831) were reported from 41 countries and territories; each accounted for <5% of the total deaths reported in week 41/2020
- Community-transmission was reported by 33 countries and territories, 21 countries and territories reported cluster transmission, while 4 countries and territories reported sporadic transmission in week 41/2020
- For an interactive subnational view of the recent COVID-19 situation in the WHO-EURO Region see the [WHO-EURO COVID19 Subnational Explorer](#)

Summary overview

- The cumulative cases across the Region increased 11.7% to 6 988 963 cases in week 41/2020 (from 6 255 179 cases in week 40/2020) and cumulative deaths increased by 2.7% to 247 313 deaths (from 240 916 deaths in week 40/2020)
- As of 29 September 2020, 22 countries and territories in the Region had an effective reproductive number significantly over 1: Armenia, Belarus, Belgium, Bulgaria, Croatia, Czech Republic, Finland, Germany, Ireland, Italy, Jersey, Kyrgyzstan, Latvia, Liechtenstein, Netherlands, Norway, Romania, Russian Federation, Serbia, Slovakia, Slovenia and the United Kingdom (See [EpiForecasts and the CMMID COVID working group COVID-19 Global Summary](#) for latest estimates)
- Ten countries in the Region each reported a cumulative incidence of ≥ 1300 cases per 100,000 population: Andorra (3495), Israel (3394), San Marino (2262), Montenegro (2227), Armenia (1909), Spain (1895), Republic of Moldova (1528), Luxembourg (1520), Holy See (1471) and Belgium (1472) (Figure 2B)
- As of week 41/2020, 64% (4 500 507) of cumulative cases were reported from the Russian Federation (19%; 1 298 718), Spain (13%; 885 683), France (10%; 718 873), United Kingdom (8%; 590 844), Italy (5%; 349 494), Turkey (5%; 334 031) and Germany (5%; 322 864). The remaining cases (36%; 2 488 456) were reported by 54 countries and territories; each accounted for <5% of the total cases reported until week 41/2020
- As of week 41/2020, 68% of cumulative deaths (167 359) were reported from the United Kingdom (17%; 42 760), Italy (15%; 36 140), Spain (13%; 33 178), France (13%; 32 684) and the Russian Federation (9%; 22 597). The remaining deaths (32%; 79 954) were reported by 52 countries and territories; each accounted for <5% of the total cases reported until week 41/2020
- 13.3% of cases were in persons aged ≥ 65 years in week 41/2020, a decrease from 38% in week 14/2020, while the percentage of fatal cases aged ≥ 65 years was 70.5% in week 41/2020 (compared to 91% in week 14/2020) (Figure 3)
- 88% of all deaths with information available were in persons aged ≥ 65 years and 56% of all deaths were in men (Table 1). 96% of all deaths with information available had at least one underlying condition, with cardiovascular disease the leading comorbidity (83%) (Table 1)
- Pooled estimates of all-cause mortality for 24 countries in the [EuromOMO](#) network show a low level of excess mortality for the participating countries, but confined to a few countries
- In week 41/2020, six countries reported a total of 318 tests and 14 detections of SARS-CoV-2 in persons with influenza-like illness (ILI) in primary care sentinel surveillance (Figure 4)
- Overall, there were 381 475 COVID-19 cases among the total of 2 577 477 tests reported to have been performed in 20 countries in week 41/2020 (Figure 5)

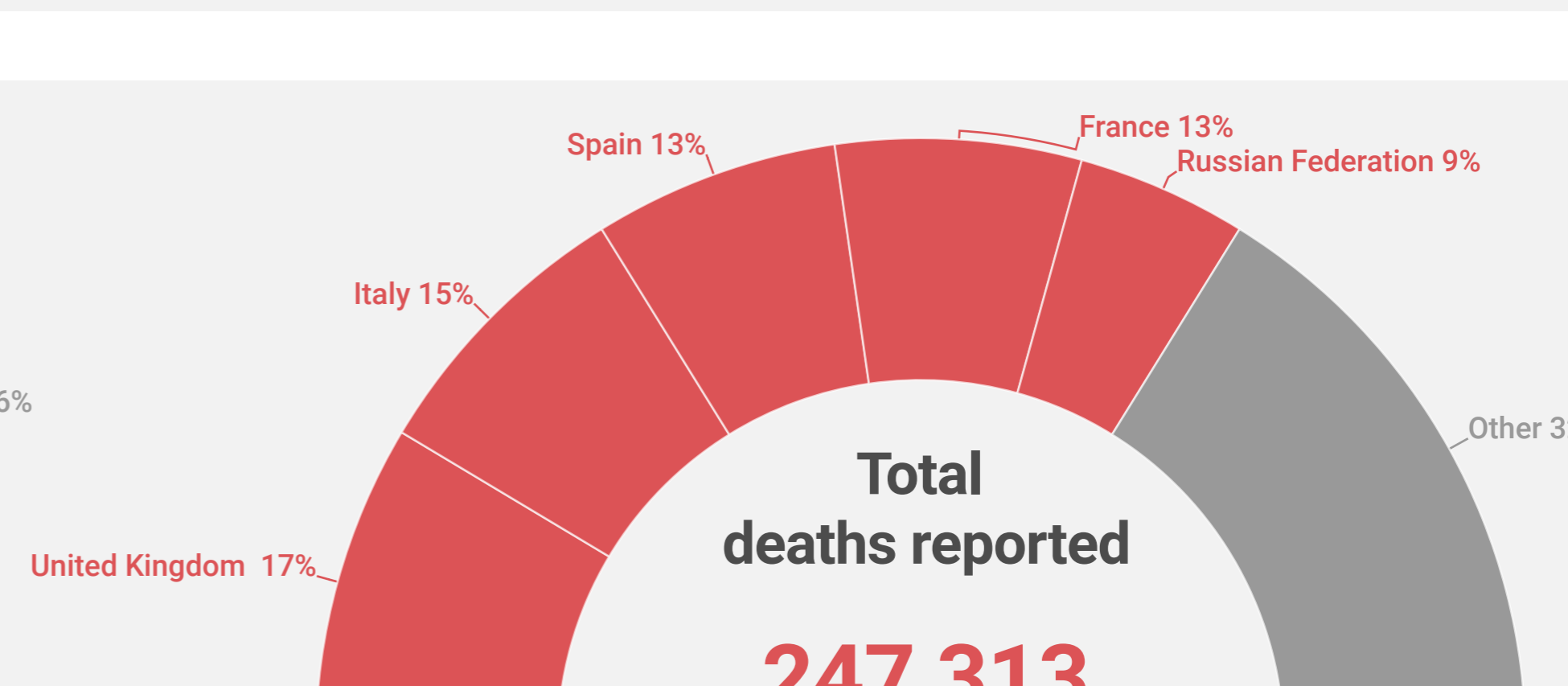
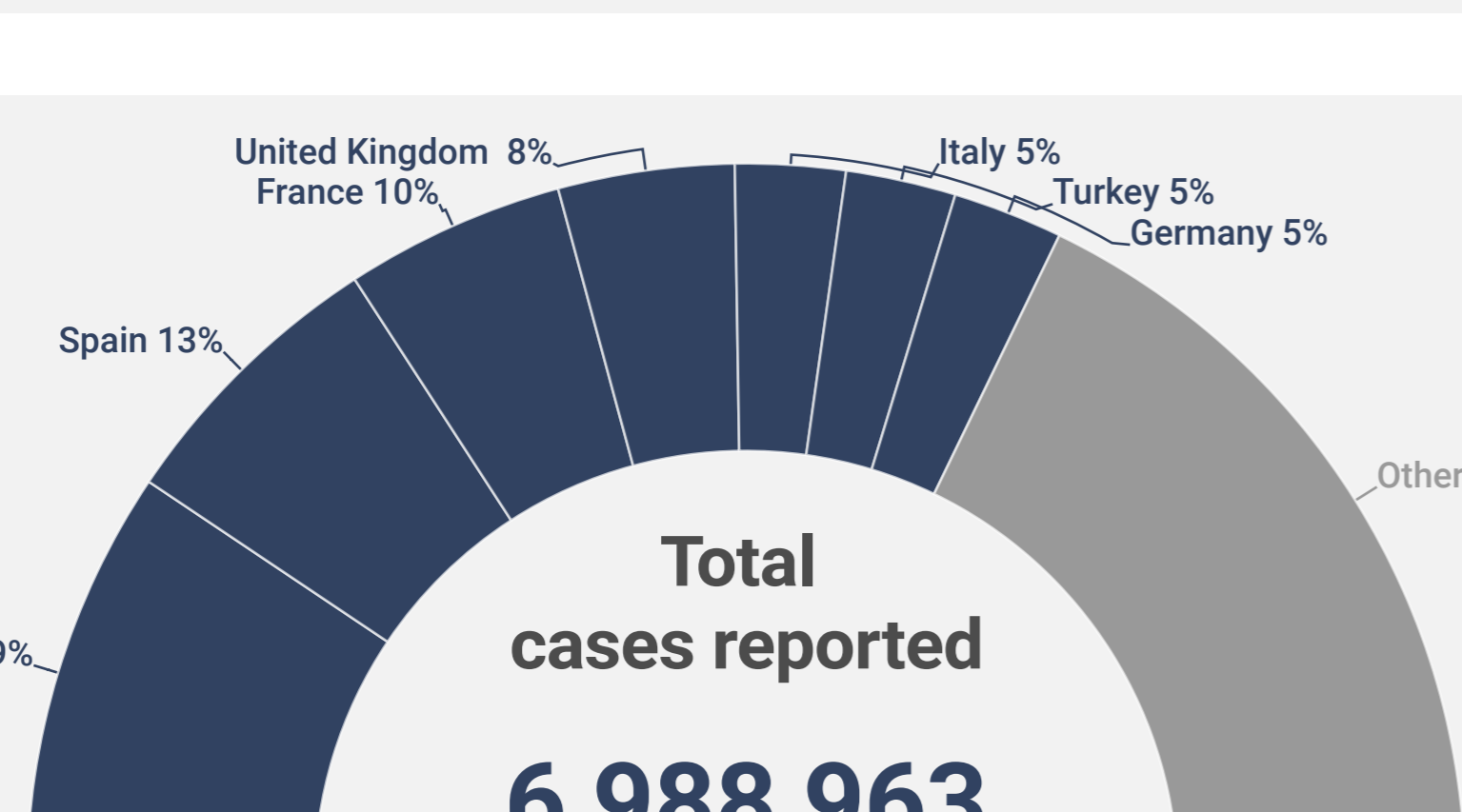
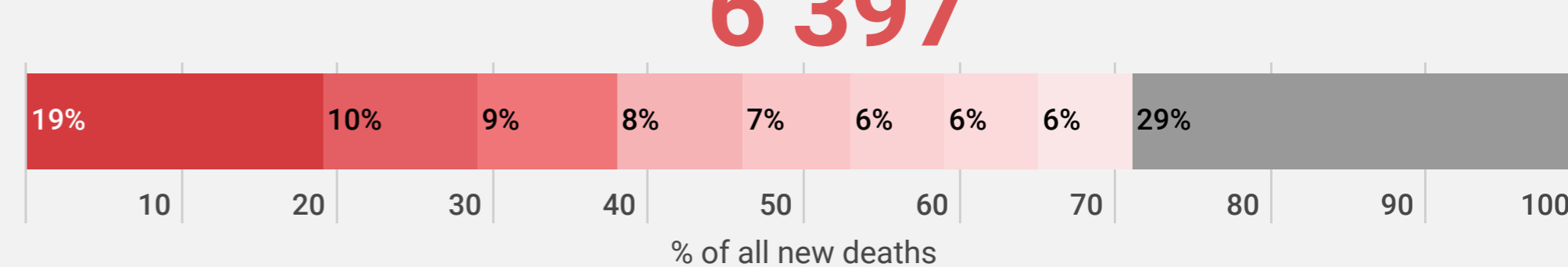
New cases (week 41/2020)

733 784



New deaths (week 41/2020)

6 397



88% of all deaths were in persons aged ≥ 65

56% of all deaths were in men

96% of all deaths had at least 1 underlying condition

83% of all deaths had cardiovascular disease

For more detailed information see: [WHO Global situation reports](#) [WHO Global situation dashboard](#)

Figure 1: Number of COVID-19 cases (N=6 988 963) and deaths (N=247 313) by reporting week

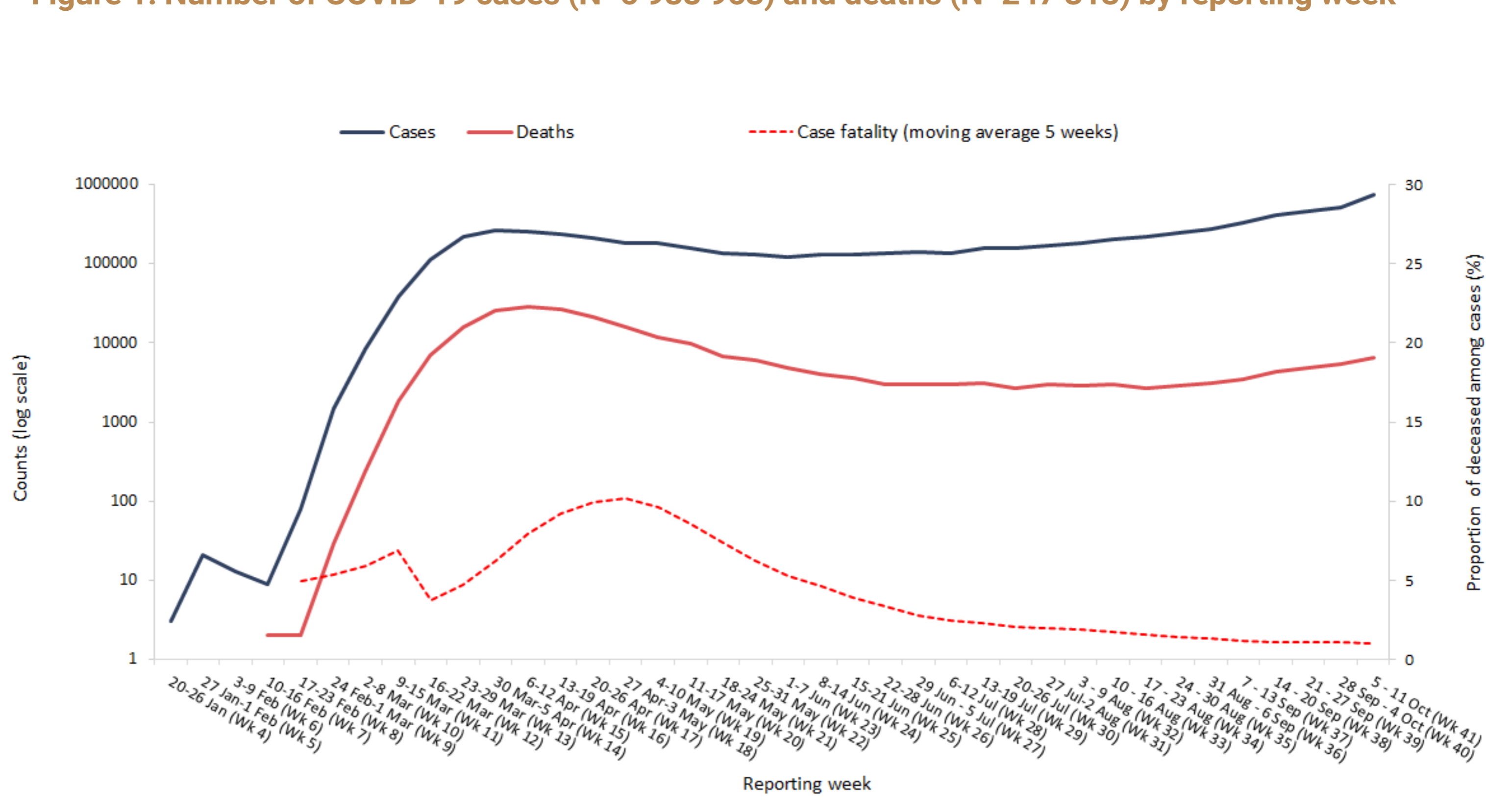


Figure 2A. COVID-19 incidence per 100,000 population and number of deaths by country for week 41

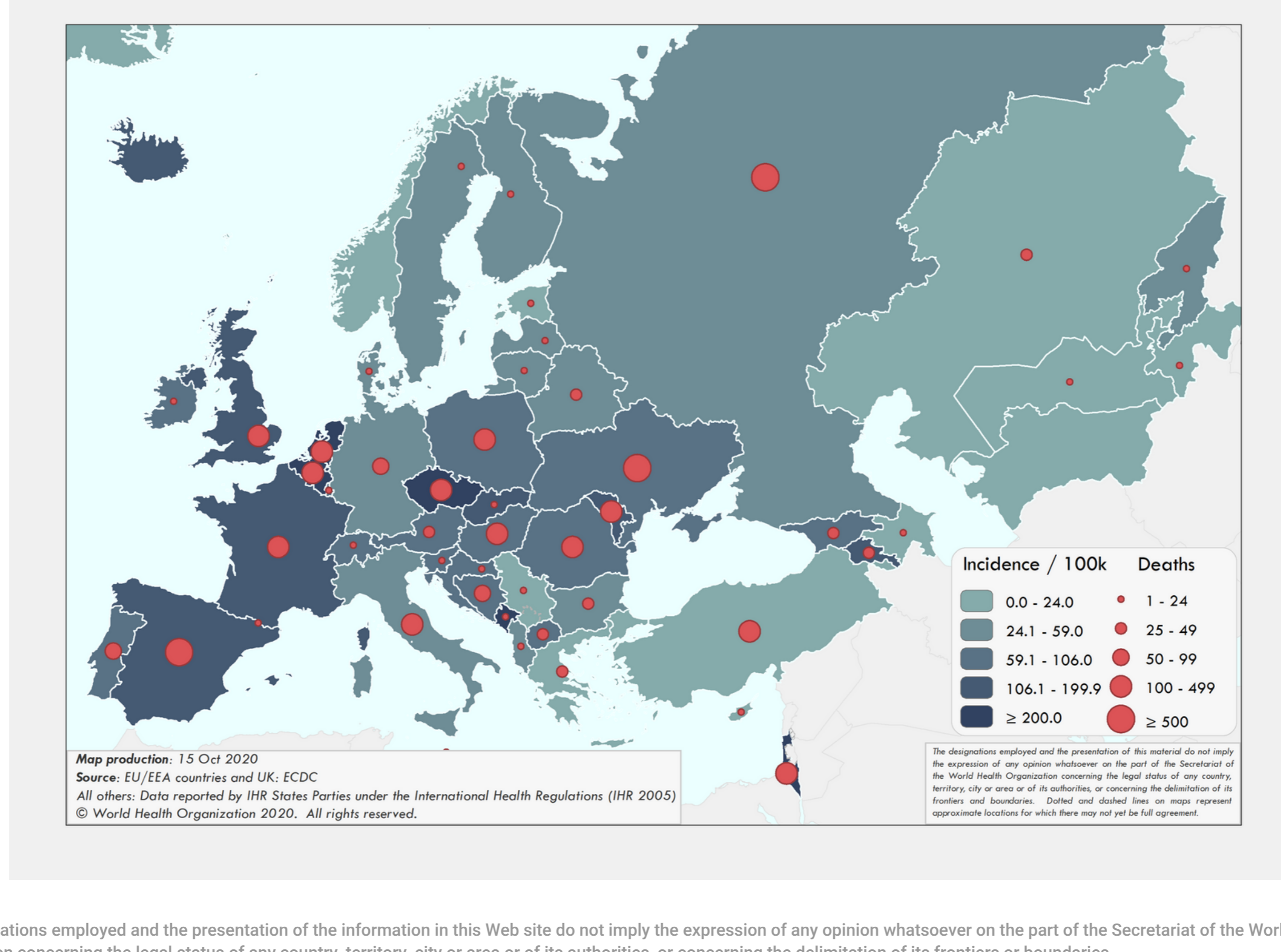


Figure 2B. COVID-19 cumulative incidence per 100,000 population and number of deaths by country

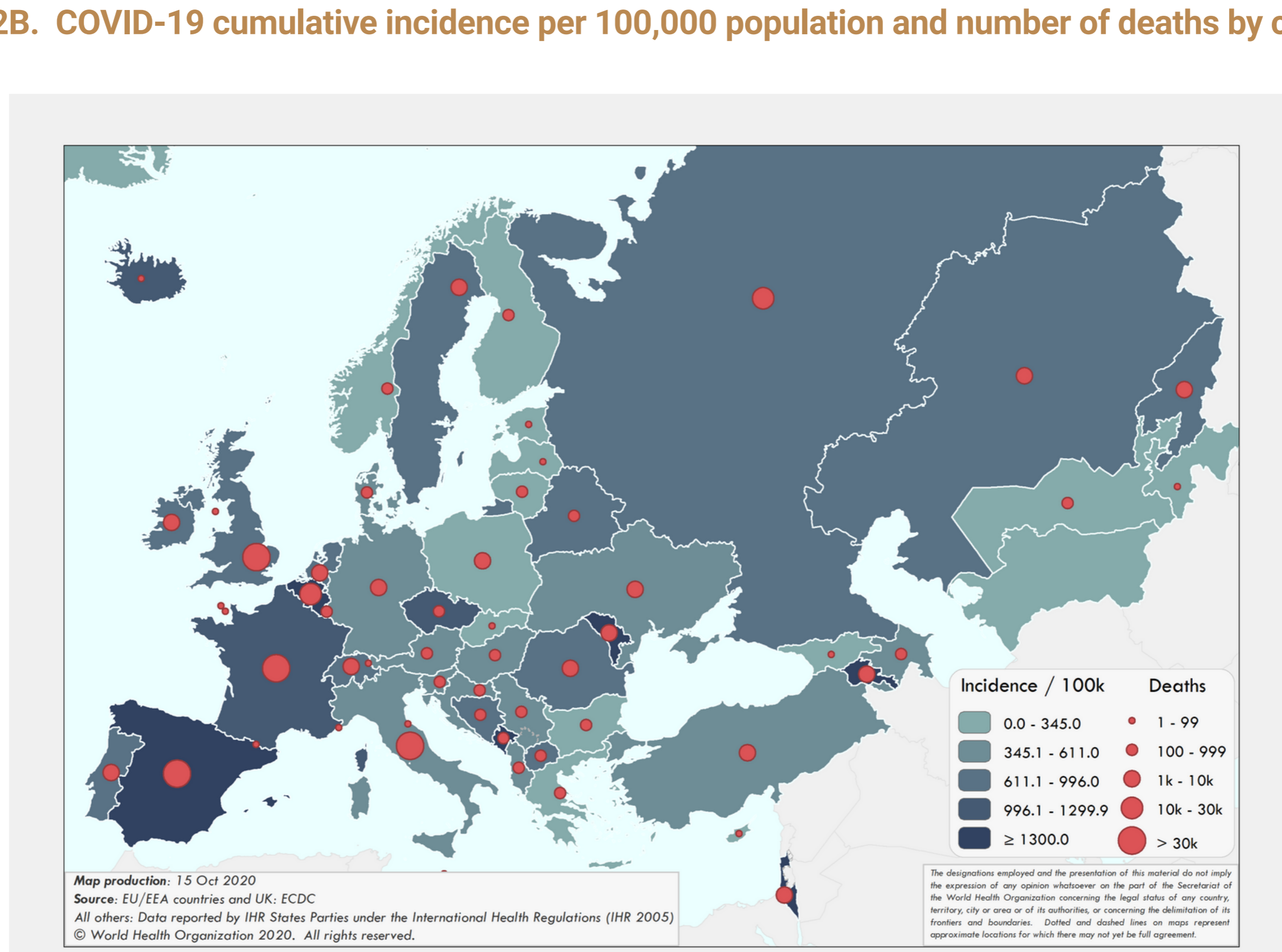
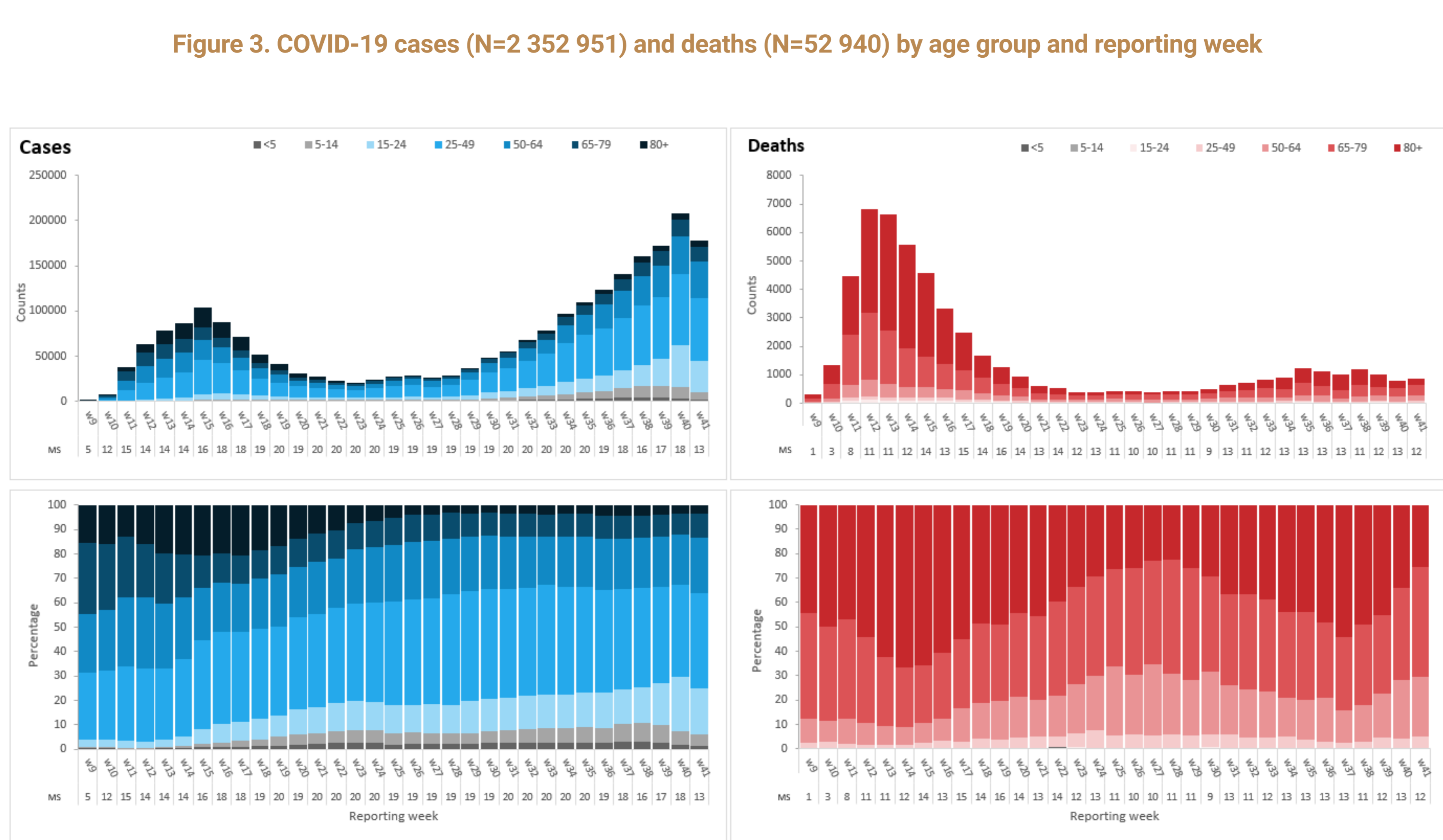


Table 1. Characteristics of COVID-19 deaths

| Characteristics | n | % | Total records with data available |
|-----------------------------------|------------|----|-----------------------------------|
| Age in years, median (range) | 81 (0-109) | | 122,486 |
| Sex, male | 68,049 | 56 | 120,807 |
| At least one underlying condition | 56,800 | 96 | 59,350 |
| • cardiovascular disease | 15,009 | 83 | 18,124 |
| • diabetes | 5,419 | 64 | 8,487 |
| • lung disease | 2,029 | 23 | 8,744 |
| • neurological disease / dementia | 2,240 | 20 | 10,967 |
| • renal disease | 892 | 24 | 3,733 |
| • obesity | 680 | 10 | 6,549 |
| • liver disease | 686 | 7 | 10,355 |
| • immune disease | 331 | 5 | 6,809 |

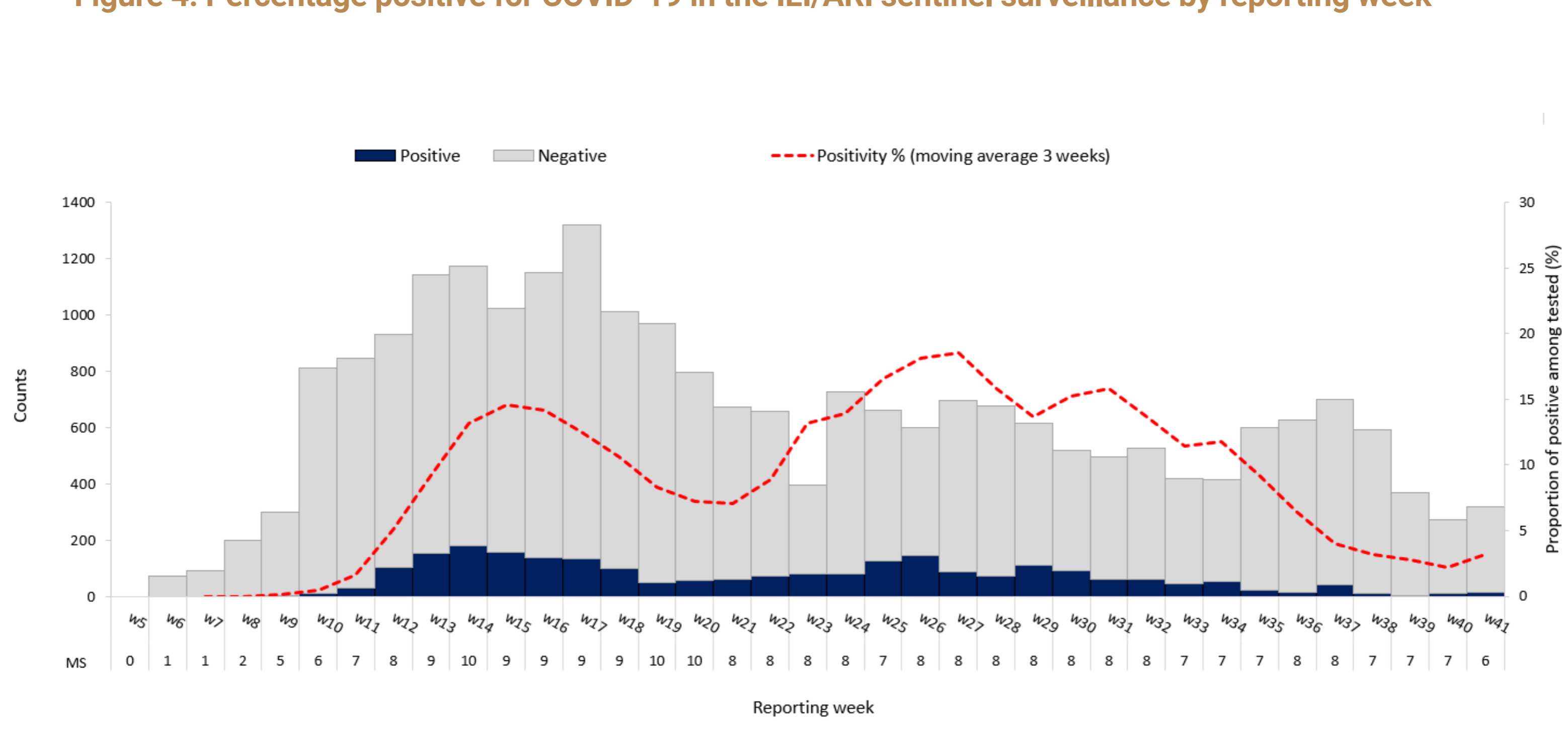
Source: Mortality database (n=122,486)

Figure 3. COVID-19 cases (N=2 352 951) and deaths (N=52 940) by age group and reporting week



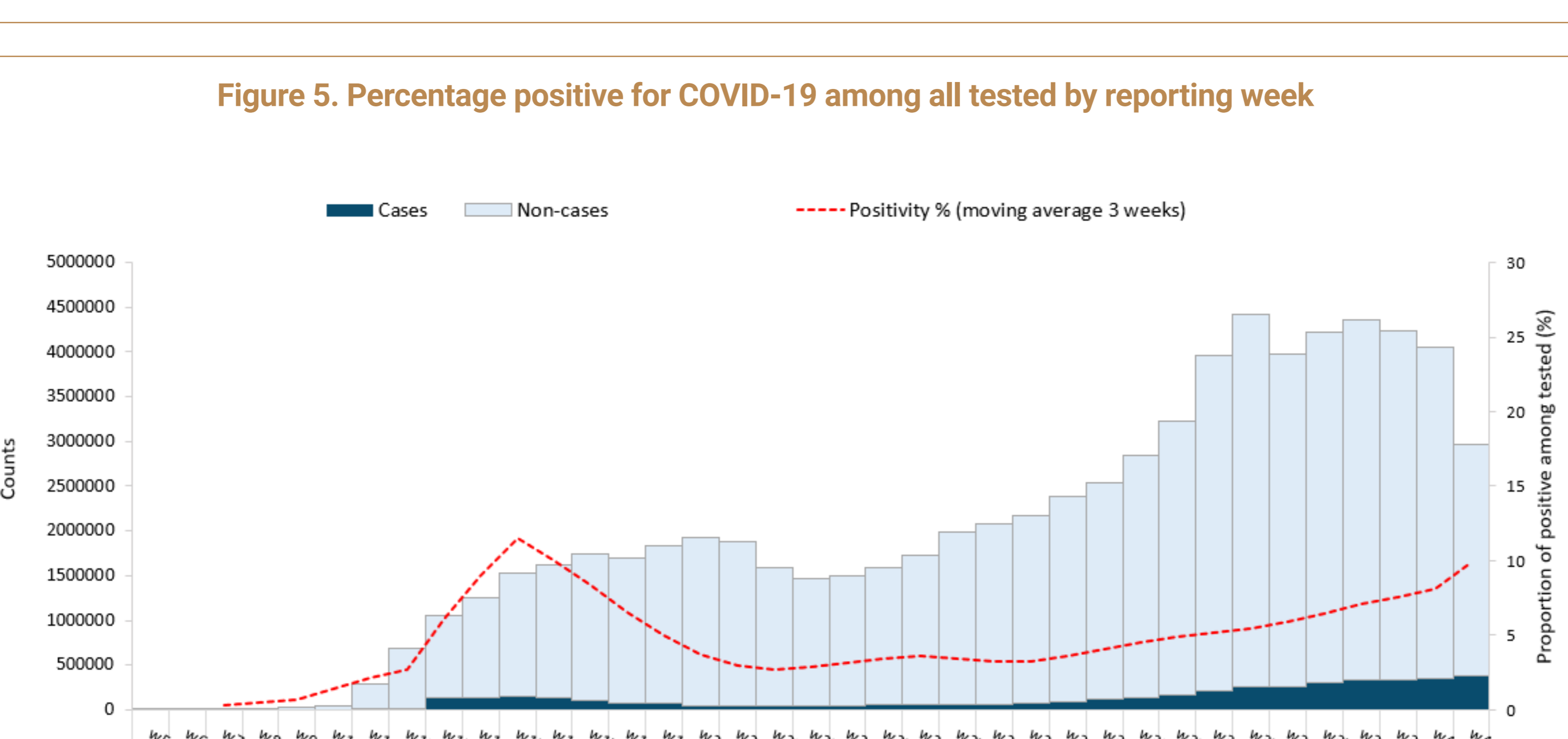
Source: Aggregate data from TESSy, MS: Member State

Figure 4. Percentage positive for COVID-19 in the ILI/ARI sentinel surveillance by reporting week



Source: Aggregate data from WHO XMart and TESSy, MS: Member State

Figure 5. Percentage positive for COVID-19 among all tested by reporting week



Source: Aggregate data from WHO XMart and TESSy. Note: Countries that report cases only (no testing data) are included. MS: Member State