



INSTITUTIONAL FRAMEWORK

Lead agency	National Road Safety Council
Funded in national budget	Yes
National road safety strategy	Yes
Funding to implement strategy	Partially funded
Fatality reduction target	50% (2013-2020)

SAFER ROADS AND MOBILITY

Audits or star rating required for new road infrastructure	Partial
Design standards for the safety of pedestrians / cyclists	Yes
Inspections / star rating of existing roads	Yes
Investments to upgrade high risk locations	Yes
Policies & investment in urban public transport	Yes

SAFER VEHICLES

Total registered vehicles for 2015	27 409 106
Cars and 4-wheeled light vehicles	20 723 423
Motorized 2- and 3-wheelers	2 531 520
Heavy trucks	3 098 376
Buses	109 844
Other	945 943

Vehicle standards applied (UNECE WP.29)

Frontal impact standard	Yes
Electronic stability control	Yes
Pedestrian protection	Yes
Motorcycle anti-lock braking system	Yes

POST-CRASH CARE

National emergency care access number	National, single number
Trauma registry	None
Formal certification for prehospital providers	No
National assessment of emergency care systems	No

DATA

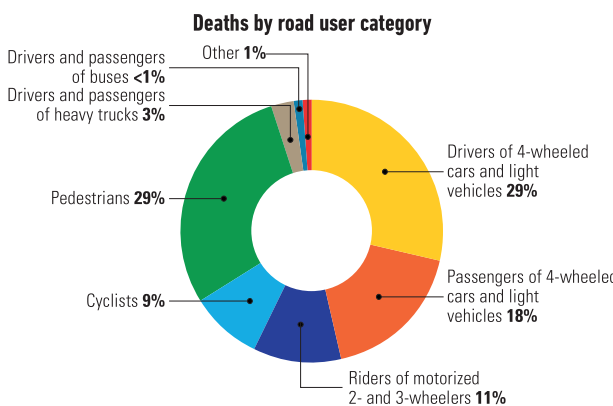
Reported road traffic fatalities (2016)	3 026 ^a (75% M, 25% F)
Reported rate per 100 000 population (2016)	7.9 ^a
WHO estimated road traffic fatalities (2016)	3 698 ^b
WHO estimated rate per 100 000 population (2016)	9.7 ^b

^a SEWIK Police Database (Traffic accidents and collisions reporting system). Died within 30 days of crash
^b WHO's method to obtain comparable country estimates: Group 1. Countries/areas with good death registration data. See explanatory note 3 in *Global status report on road safety 2018* for full details

SAFER ROAD USERS

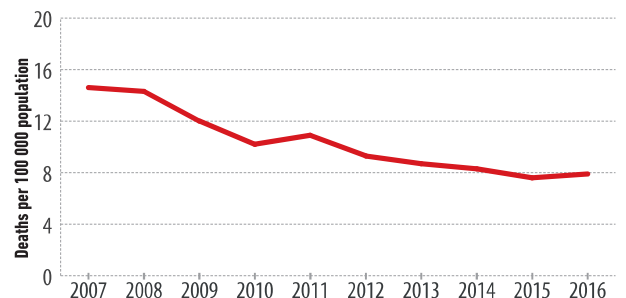
National speed limit law	Yes
Max urban speed limit	50 km/h ^c
Max rural speed limit	90 km/h
Max motorway speed limit	140 km/h
Local authorities can modify limits	Yes
Self-reported enforcement	0 1 2 3 4 5 6 7 8 9 10
Predominant type of enforcement	Manual
National drink-driving law	Yes
BAC limit – general population	< 0.02 g/dl
BAC limit – young or novice drivers	< 0.02 g/dl
Random breath testing carried out	Yes
Testing carried out in case of fatal crash	All drivers tested
Self-reported enforcement	0 1 2 3 4 5 6 7 8 9 10
% road traffic deaths involving alcohol	13% ^d
National motorcycle helmet law	Yes
Applies to drivers and passengers	Yes
Helmet fastening required	No
Helmet standard referred to and/or specified	Yes
Children passengers on motorcycles	Not restricted ^e
Self-reported enforcement	0 1 2 3 4 5 6 7 8 9 10
Helmet wearing rate	99% Drivers ^f , 100% Passengers ^f
National seat-belt law	Yes
Applies to front and rear seat occupants	Yes
Self-reported enforcement	0 1 2 3 4 5 6 7 8 9 10
Seat-belt wearing rate	96% Front seats ^g , 76% Rear seats ^g
National child restraint law	Yes
Children seated in front seat	Allowed in a child restraint ^h
Child restraint required	135-150 cm ⁱ
Child restraint standard referred to and/or specified	Yes
Self-reported enforcement	0 1 2 3 4 5 6 7 8 9 10
% children using child restraints	93% ^j
National law on mobile phone use while driving	Yes
Ban on hand-held mobile phone use	Yes
Ban on hands-free mobile phone use	No
National drug-driving law	Yes

^c 60 km/h from 23:00 - 05:00
^d 2016, SEWIK Police Database (Traffic accidents and collisions reporting system)
^e Speed limit for motorcycles transporting a child under 7 years is limited to 40 km/h
^f 2015, Ministry of Infrastructure and Development, Using of motorcycle helmet in Poland 2015
^g 2015, Ministry of Infrastructure and Development, Using of seat belts in Poland 2015
^h Provided that airbag is deactivated if child is in a rear-facing restraint
ⁱ Child restraints are required for children under 150 cm. By exception, children of height 135-150 cm can be restrained with a seat belt only if sitting in the rear
^j 2015, Ministry of Infrastructure and Development, Using of child restraints device in Poland 2015a



Source: 2016, SEWIK Police Database (Traffic accidents and collisions reporting system)

Trends in reported road traffic deaths



Source: SEWIK Police Database (Traffic accidents and collisions reporting system)