

Best viewed using Chrome, Safari or Internet Explorer 9 or higher. If you are having trouble viewing this page please click here for the alternative viewer.

## Key points

### Week 46/2020 (9 - 15 Nov 2020)

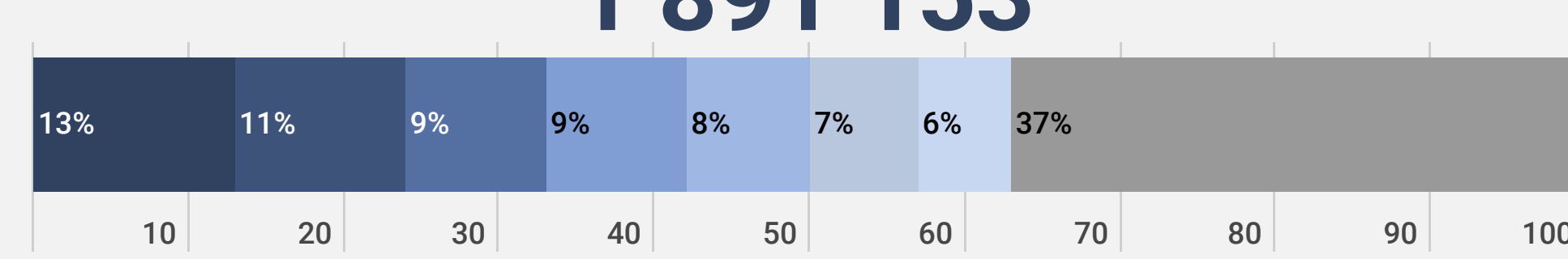
- The number of cases reported in the Region decreased by 7.5% to 1 891 153 in week 46/2020 compared to the previous week (2 044 290 cases in week 45/2020)
- 63% (1 185 168) of the cases reported in week 46/2020 were reported from seven countries: Italy (13%; 242 062), France (11%; 205 894), United Kingdom (9%; 172 915), Poland (9%; 169 478), Russian Federation (8%; 151 491), Germany (7%; 131 998) and Spain (6%; 111 330). The remaining cases (37%; 705 985) were reported by 52 countries and territories; each accounted for <5% of the total cases reported in week 46/2020
- The crude incidence continues to vary across the region with a range from 3 per 100,000 population in Tajikistan to 727 per 100,000 population in Montenegro in week 46/2020
- Seven countries had a crude incidence of  $\geq 500$  per 100 000 population in week 46/2020: Montenegro (727), Austria (578), Luxembourg (560), Georgia (549), Liechtenstein (539), Andorra (526) and Switzerland (507) (Figure 2A). A total of 31 countries had a crude incidence of  $\geq 200$  per 100 000 population in week 46/2020
- The 14-day cumulative incidence increased by  $\geq 10\%$  in week 46/2020 in 39 countries and territories in the Region; an increase of  $\geq 50\%$  was observed in 27 of these countries and territories: Albania, Austria, Azerbaijan, Bulgaria, Estonia, Georgia, Germany, Greece, Guernsey, Hungary, Isle of Man, Italy, Kazakhstan, Kosovo\*, Latvia, Lithuania, Monaco, Montenegro, North Macedonia, Norway, Poland, Portugal, Romania, San Marino, Serbia and Sweden (see [EURO COVID-19 Dashboard](#) for recent trends)
- The number of deaths in the Region in week 46/2020 increased 19% to 29 725 compared to the previous week (24 947 deaths in week 45/2020) (Figure 1). The proportion of reported cases that died was 1.6% in week 46/2020
- 58% (17 223) of the deaths reported in week 46/2020 were reported by France (14%; 4 077), Italy (12%; 3 620), United Kingdom (10%; 2 878), Russian Federation (9%; 2 649), Poland (8%; 2 409) and Spain (5%; 1 590). The remaining deaths (42%; 12 502) were reported from 47 countries and territories; each accounted for <5% of the total deaths reported in week 46/2020
- Community-transmission was reported by 36 countries and territories, 18 countries and territories reported cluster transmission, while 4 countries and territories reported sporadic transmission in week 46/2020
- For an interactive subnational view of the recent COVID-19 situation in the WHO-EURO Region see the [WHO-EURO COVID-19 Subnational Explorer](#)

## Summary overview

- The cumulative cases across the Region increased 14% to 15 137 883 cases in week 46/2020 (from 13 246 730 cases in week 45/2020) and cumulative deaths increased by 9.5% to 342 964 deaths (from 313 239 deaths in week 45/2020)
- As of 16 November 2020, 14 countries in the Region had an effective reproductive number significantly over 1 (See [EpiForecasts and the CMMID COVID working group COVID-19 Global Summary](#) for latest estimates)
- 12 countries in the Region each reported a cumulative incidence of  $\geq 3000$  cases per 100,000 population: Andorra (7421), Belgium (4658), Montenegro (4404), Czech Republic (4287), Luxembourg (4211), Armenia (3967), Israel (3797), San Marino (3700), Spain (3193), Holy See (3190), Switzerland (3032) and France (3001) (Figure 2B)
- As of week 46/2020, 57% (8 652 025) of cumulative cases were reported from France (13%; 1 954 599), Russian Federation (13%; 1 925 825), Spain (10%; 1 492 190), United Kingdom (9%; 1 344 356), Italy (8%; 1 144 552) and Germany (5%; 790 503). The remaining cases (43%; 6 485 858) were reported by 55 countries and territories; each accounted for <5% of the total cases reported until week 46/2020
- As of week 46/2020, 63% of cumulative deaths (215 309) were reported from the United Kingdom (15%; 51 766), Italy (13%; 44 683), France (13%; 44 246), Spain (12%; 41 428) and the Russian Federation (10%; 33 186). The remaining deaths (37%; 127 655) were reported by 53 countries and territories; each accounted for <5% of the total cases reported until week 46/2020
- 17% of cases were in persons aged  $\geq 65$  years in week 46/2020, a decrease from 39% in week 14/2020, while the percentage of fatal cases aged  $\geq 65$  years was 86% in week 46/2020 (compared to 91% in week 14/2020) (Figure 3)
- 89% of all deaths with information available were in persons aged  $\geq 65$  years and 56% of all deaths were in men (Table 1). 96% of all deaths with information available had at least one underlying condition, with cardiovascular disease the leading comorbidity (83%) (Table 1)
- The latest weekly pooled [EuroMOMO](#) estimates show a substantial excess mortality overall for the participating European countries, coinciding with a reported increase in COVID-19 cases in several countries. This excess mortality is driven by a very substantial excess mortality in some countries, while other countries see normal mortality levels. The excess all-cause mortality is seen primarily in the age group of 65 years and above, but also in the age groups of 15-44 and 45-64 years.
- In week 46/2020, one country reported a total of 32 tests and 1 detection of SARS-CoV-2 in persons with influenza-like illness (ILI) in primary care sentinel surveillance (Figure 4)
- Overall, there were 1 306 178 COVID-19 cases among the total of 11 593 396 tests reported to have been performed in 33 countries in week 46/2020 (Figure 5)

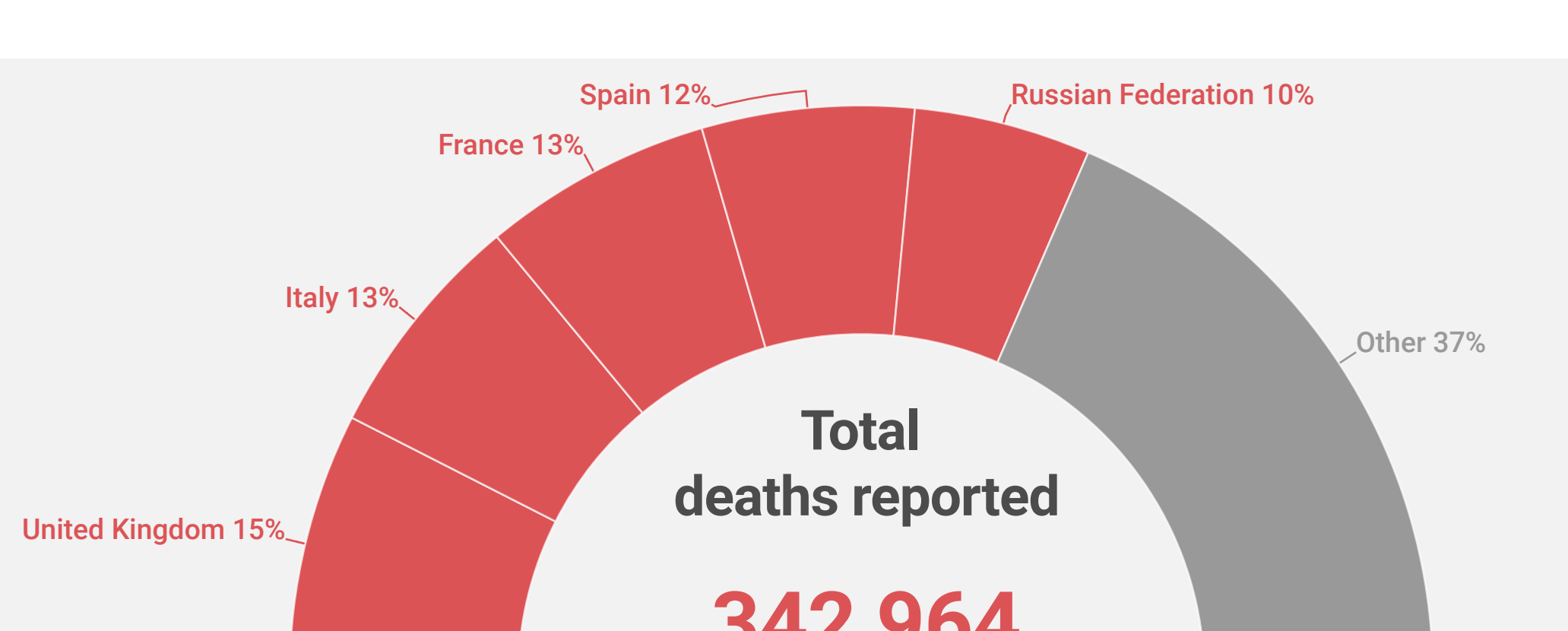
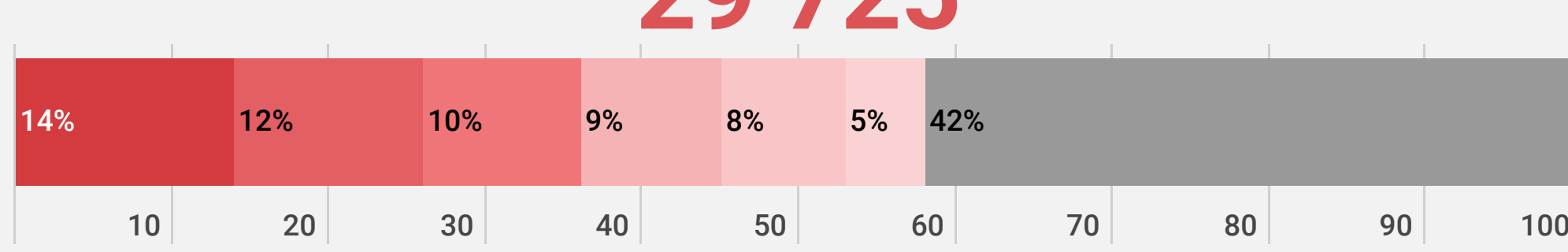
## New cases (week 46/2020)

1 891 153



## New deaths (week 46/2020)

29 725



89%

of all deaths were in persons aged  $\geq 65$

56%

of all deaths were in men

96%

of all deaths had at least 1 underlying condition

83%

of all deaths had cardiovascular disease

For more detailed information see: [WHO Global situation reports](#) [WHO Global situation dashboard](#)

Figure 1: Number of COVID-19 cases (N=15 137 883) and deaths (N=342 964) by reporting week

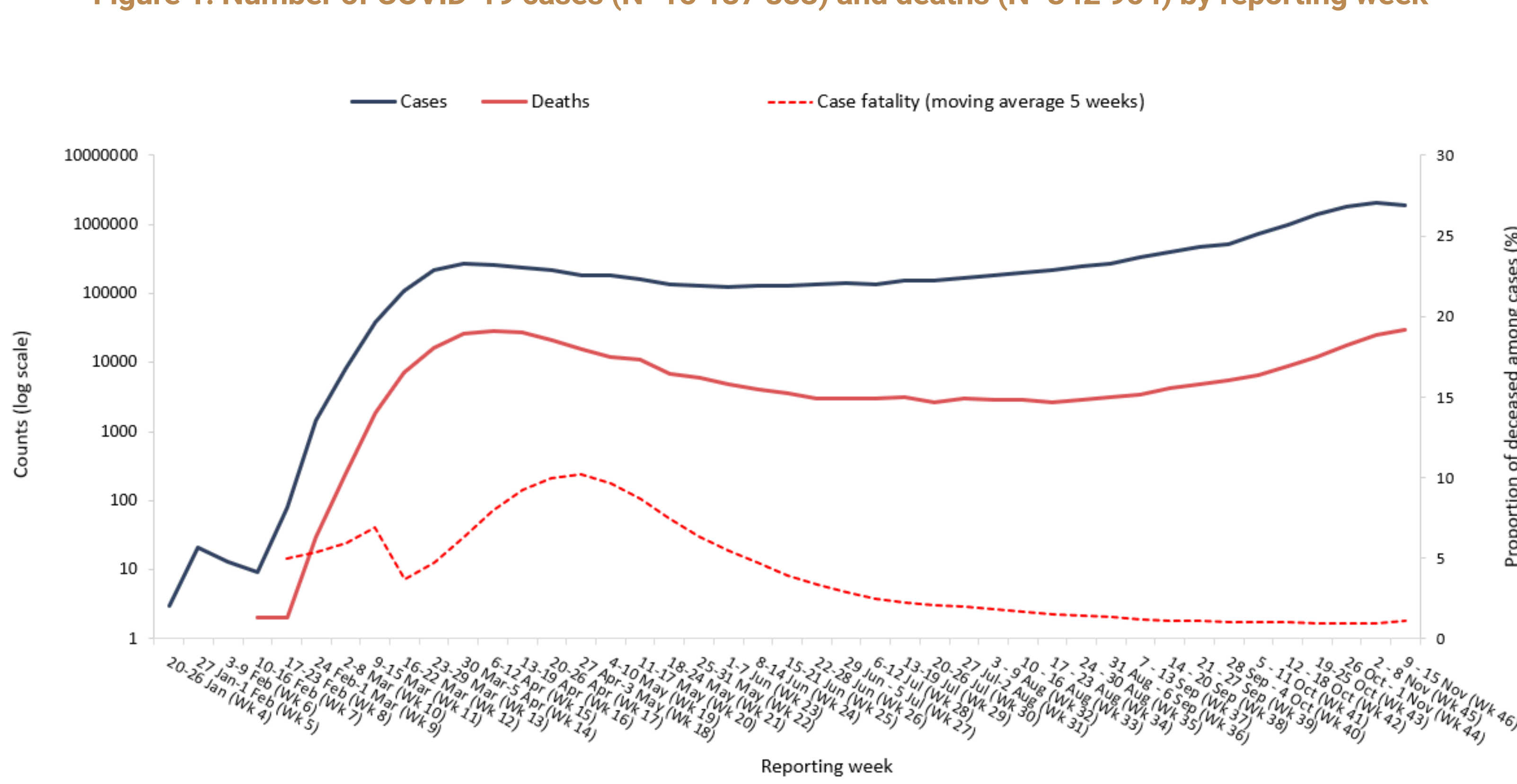


Figure 2A. COVID-19 incidence per 100,000 population and number of deaths by country for week 46

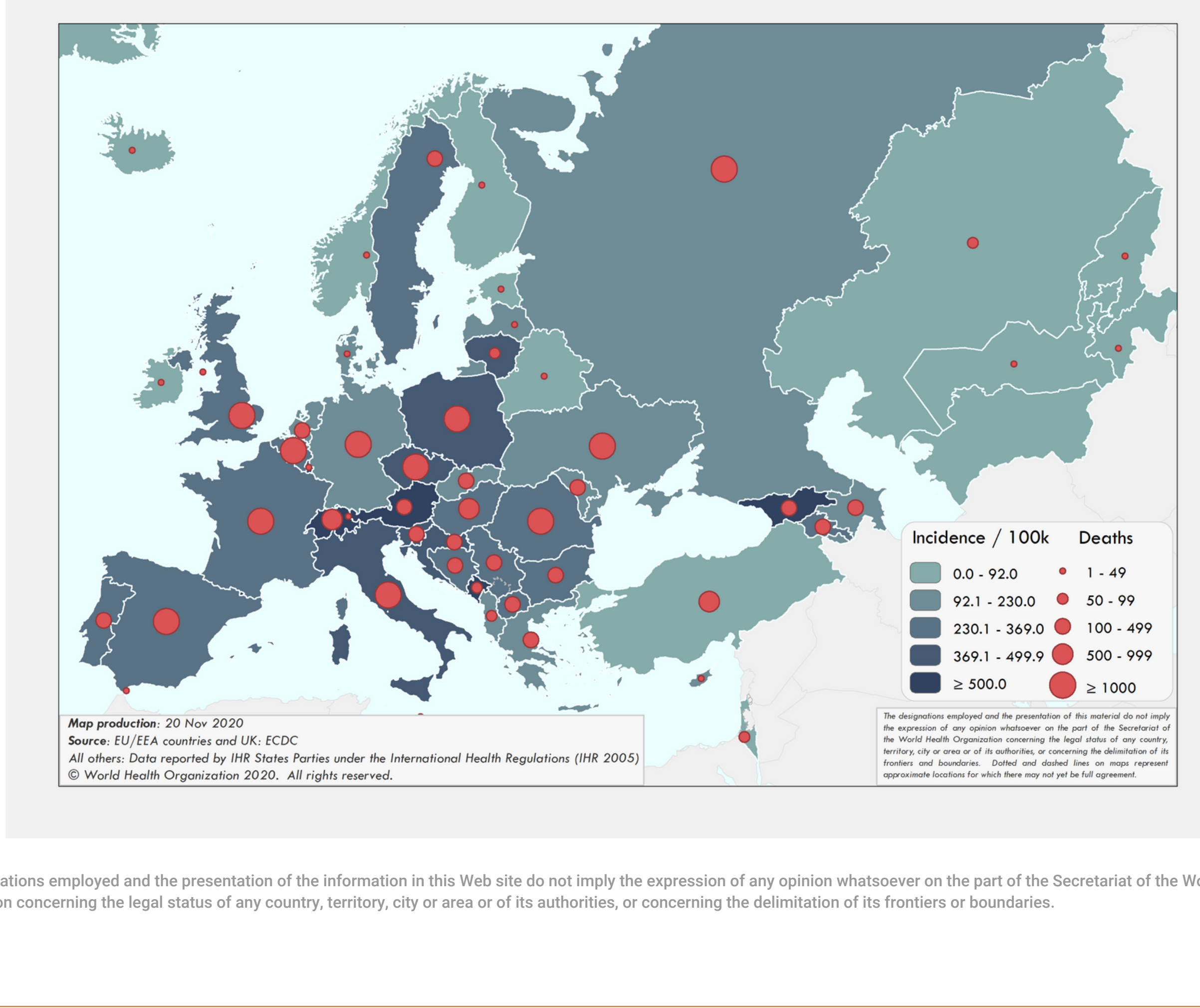


Figure 2B. COVID-19 cumulative incidence per 100,000 population and number of deaths by country

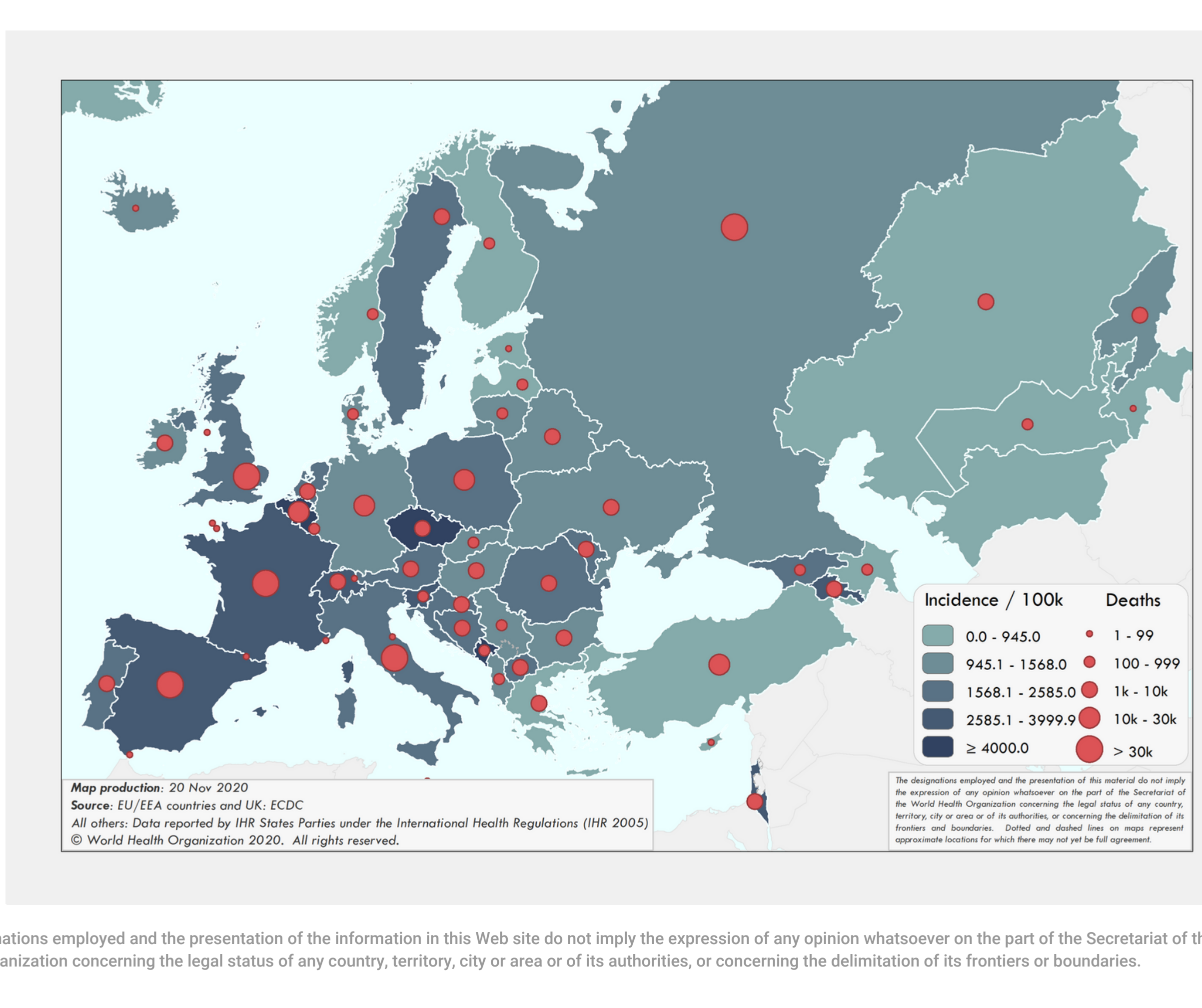


Table 1. Characteristics of COVID-19 deaths

Characteristics	n	%	Total records with data available
Age in years, median (range)	81 (0-109)		136,655
Sex, male	76,042	56	134,977
At least one underlying condition	63,902	96	66,687
• cardiovascular disease	16,417	83	19,865
• diabetes	5,816	61	9,497
• lung disease	2,196	24	9,222
• neurological disease / dementia	2,455	20	12,569
• renal disease	1,149	25	4,670
• obesity	853	12	7,188
• liver disease	802	7	11,943
• immune disease	348	5	7,449

Source: Mortality database (n=136 701)

Figure 3. COVID-19 cases (N=11 320 051) and deaths (N=177 132) by age group and reporting week

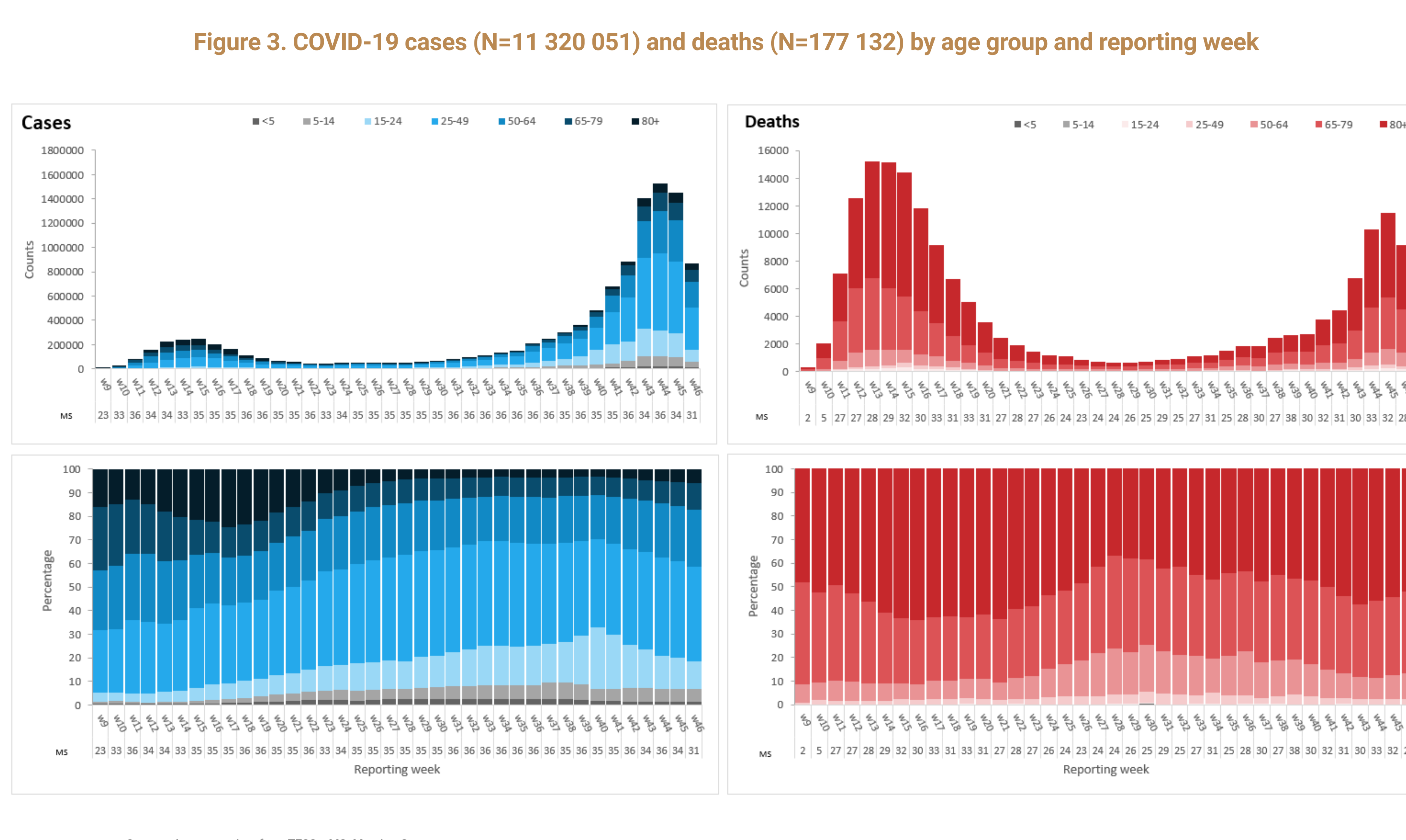


Figure 4. Percentage positive for COVID-19 in the ILI/ARI sentinel surveillance by reporting week

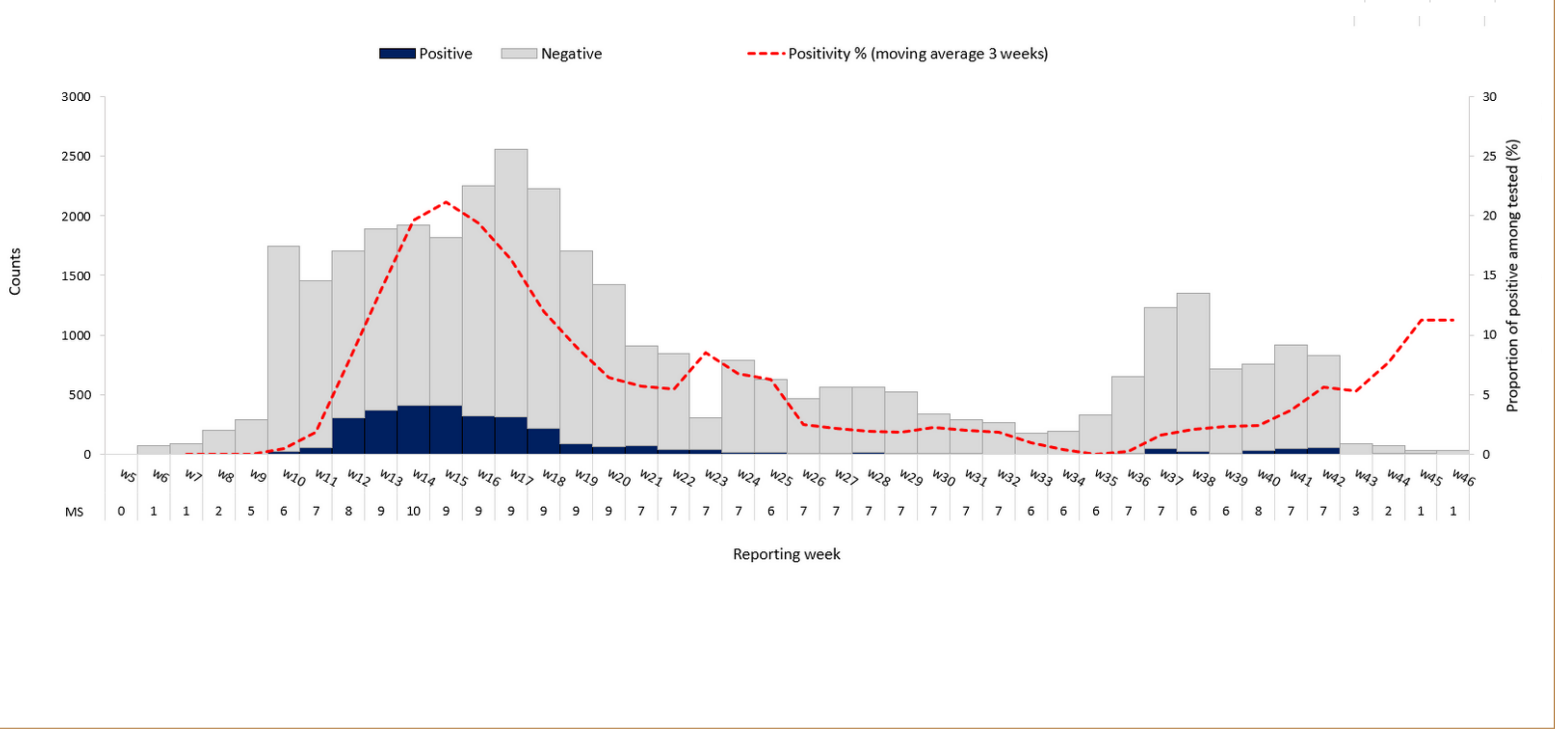


Figure 5. Percentage positive for COVID-19 among all tested by reporting week

