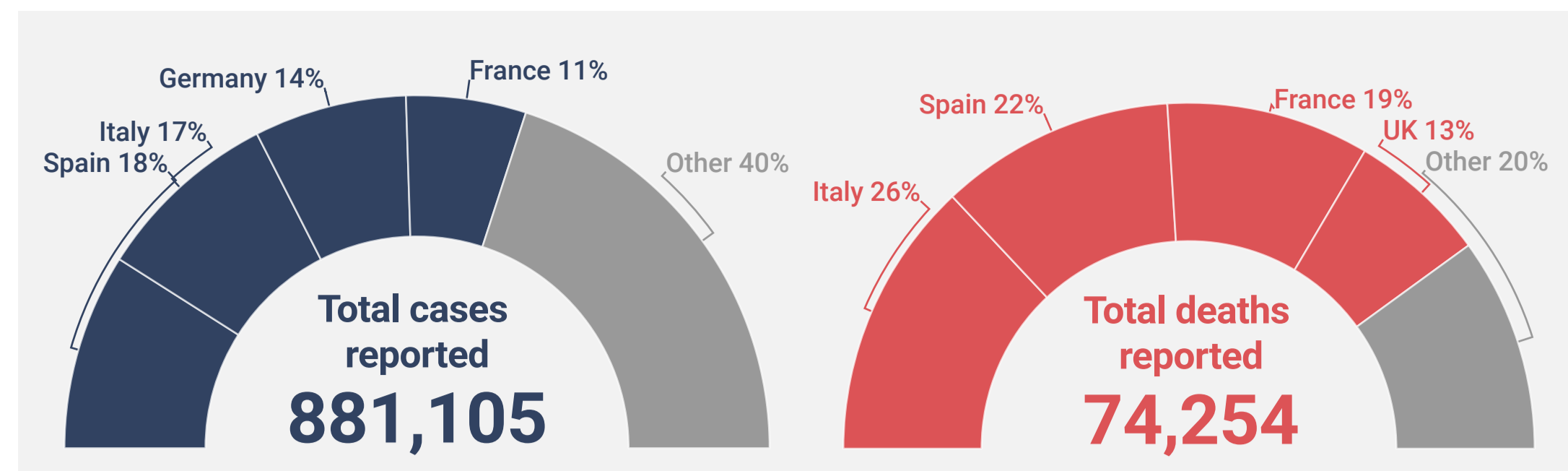


Best viewed using Chrome, Safari or Internet Explorer 9 or higher. If you are having trouble viewing this page please [click here](#) for the alternative viewer.

## Key points

- The number of cases reported in Epi week 15/2020 in the Region was similar with that reported for Epi week 14/2020
- 60% of the cases were reported from Italy, Spain, Germany and France
- 80% of the deaths were reported from Spain, Italy, France and United Kingdom
- 12 countries and territories in the Region each reported a cumulative incidence >200/100,000 population
- 16% of reported infections with information available was in a health care worker
- 95% of deaths were in persons aged 60 years and older and 60% of all deaths were in men
- 95% of deaths with information available had at least one underlying condition, with cardiovascular disease the leading comorbidity (67%)
- There was a marked increase in the pooled excess all-cause mortality in 24 countries/regions that coincides with COVID-19 transmission in some countries, primarily in the age group ≥65 years, but also in the 15-64 years age group for Epi week 15/2020 (see [European Mortality Bulletin](#))
- In Epi week 15/2020, the percentage of COVID-19 detections in persons with influenza-like illness in the primary care setting was 14% (2 countries) compared to 9% in Epi week 14/2020 (5 countries) and 6% in Epi week 13/2020 (6 countries)

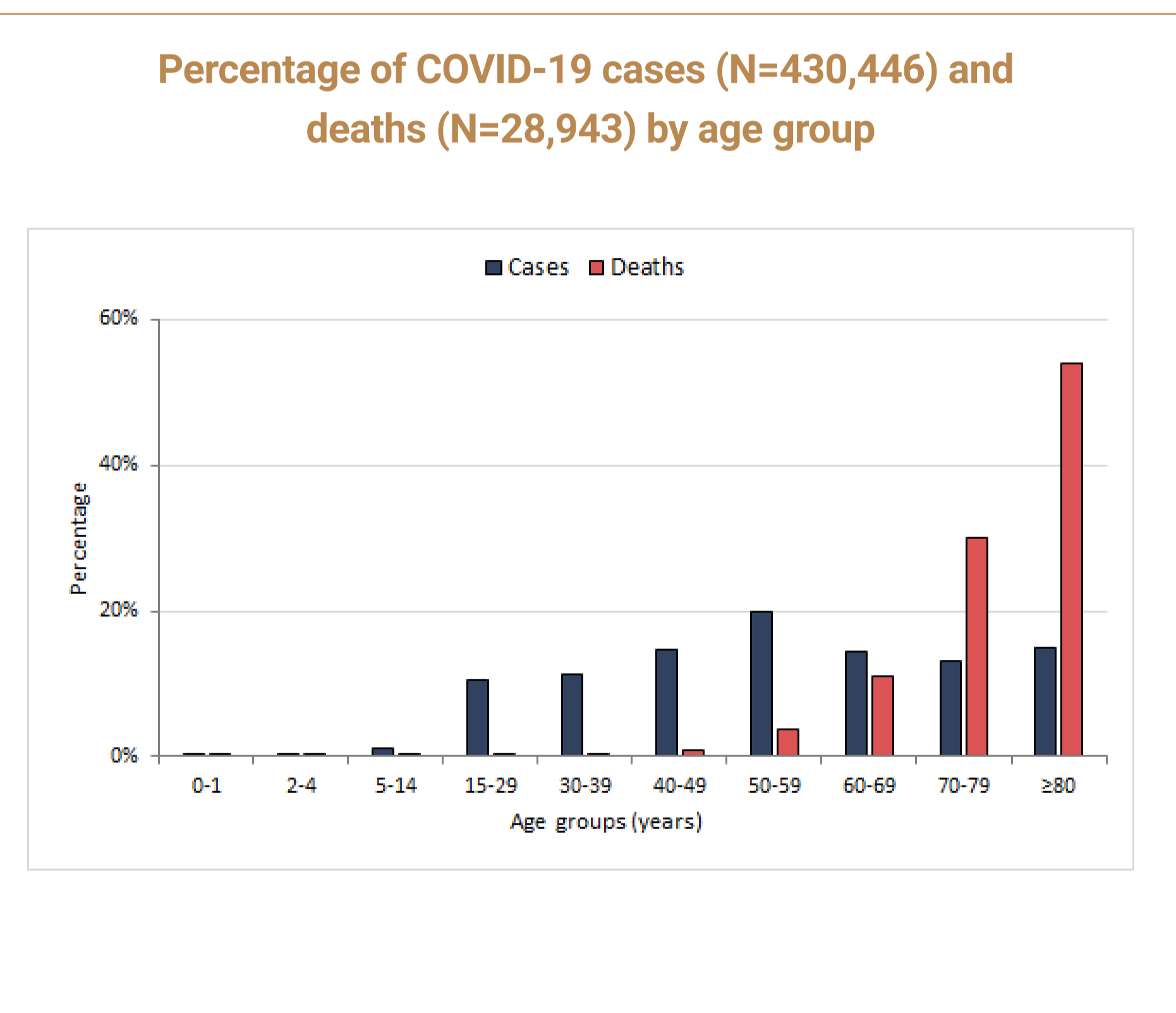
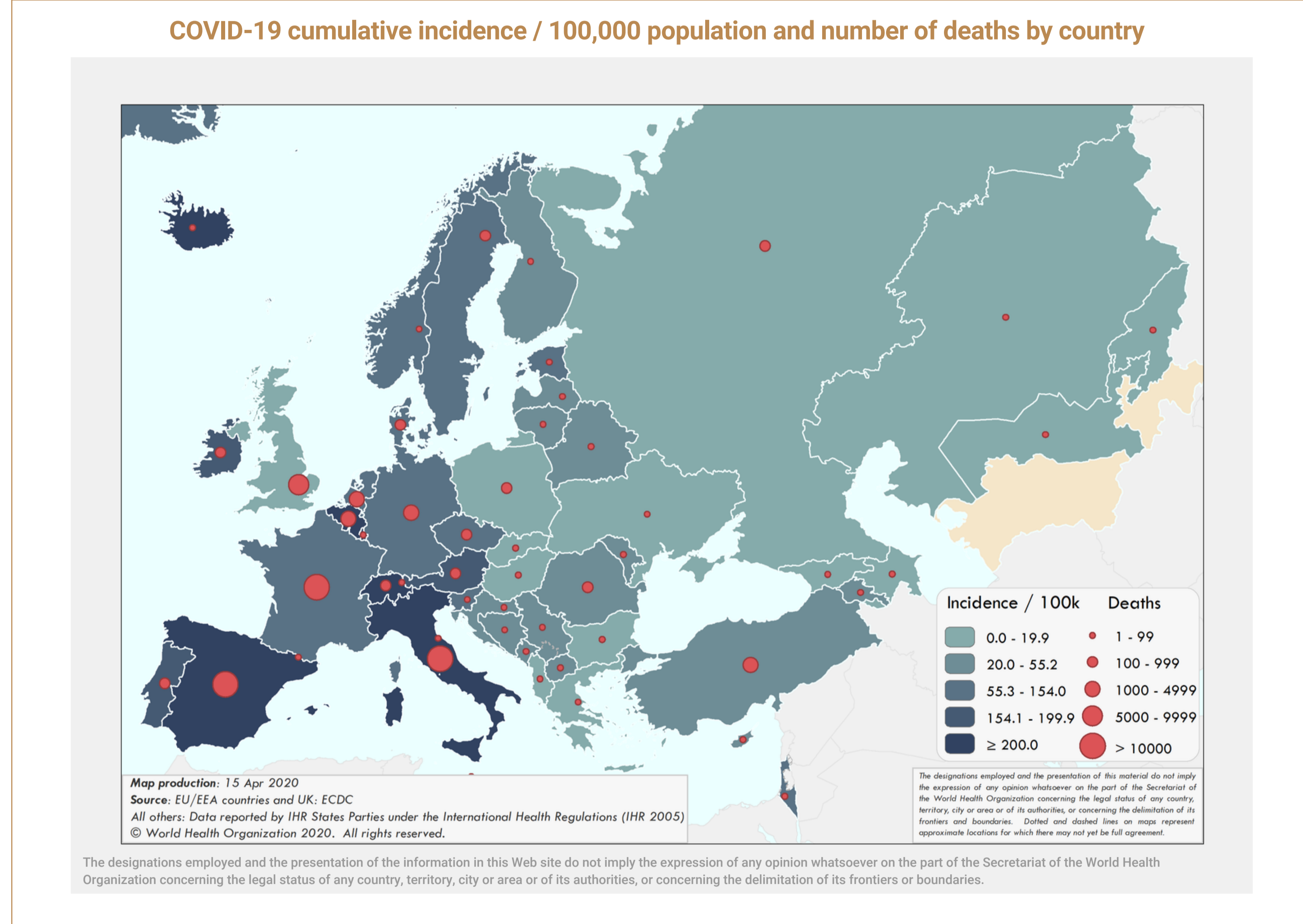
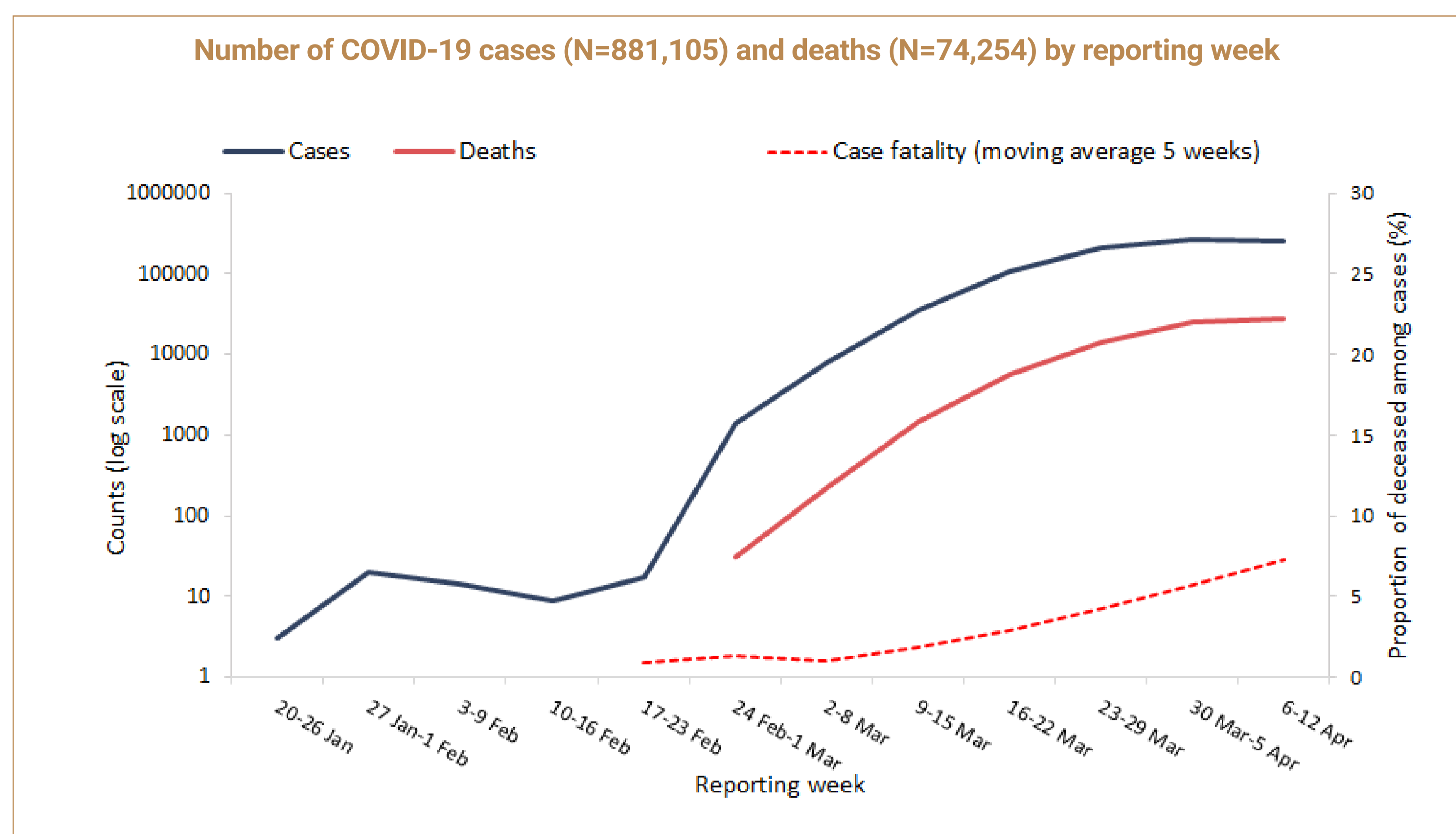


Countries & territories with reported cases	Total cases reported	Total deaths reported
60 (0)	881,105 (258,854)	74,254 (27,951)

(numbers in brackets are new for the week of 6-12 April 2020)



For more detailed information see: [WHO Global situation reports](#) [WHO Global situation dashboard](#)



**Characteristics of COVID-19 cases and deaths**

Characteristics	n	%	Total records with data available
<b>Cases</b>			
Age in years, median (range)*	55 (0-105)		347997
Sex, male*	171032	50	345281
Travelled*	14712	17	87190
Recovered*	123429	77	160899
Health care workers*	31048	16	190341
Hospitalization*	74472	34	219584
Intensive care unit admissions*	7289	5	161509
<b>Deaths</b>			
Age in years, median (range)^	80 (3-105)		28943
Sex, male^	17435	60	28864
At least one underlying condition^	8006	95	8403
• cardiovascular disease	4497	67	6675
• diabetes	2308	36	6470
• lung disease	1704	26	6559
• neurological disease / dementia	554	22	2534
• renal disease	513	21	2394
• malignancy	379	24	1602
• obesity	202	9	2153
• liver disease	103	4	2335
• immune disease	66	3	2308
• other	2551	44	5777

Source: \*Case report forms (n=349,651); ^Case report forms and aggregated data from Italy (10/12 April 2020) and Spain (6 April 2020) (n=473,630); Health care workers refer to occupation and not to the place of exposure ^Case report forms, mortality survey, aggregated data from Italy (10 April 2020) and Spain (6 April 2020) (n=28,956)

