

Best viewed using Chrome, Safari or Internet Explorer 9 or higher. If you are having trouble viewing this page please click here for the alternative viewer.

Key points

Week 29/2020 (13 - 19 Jul 2020)

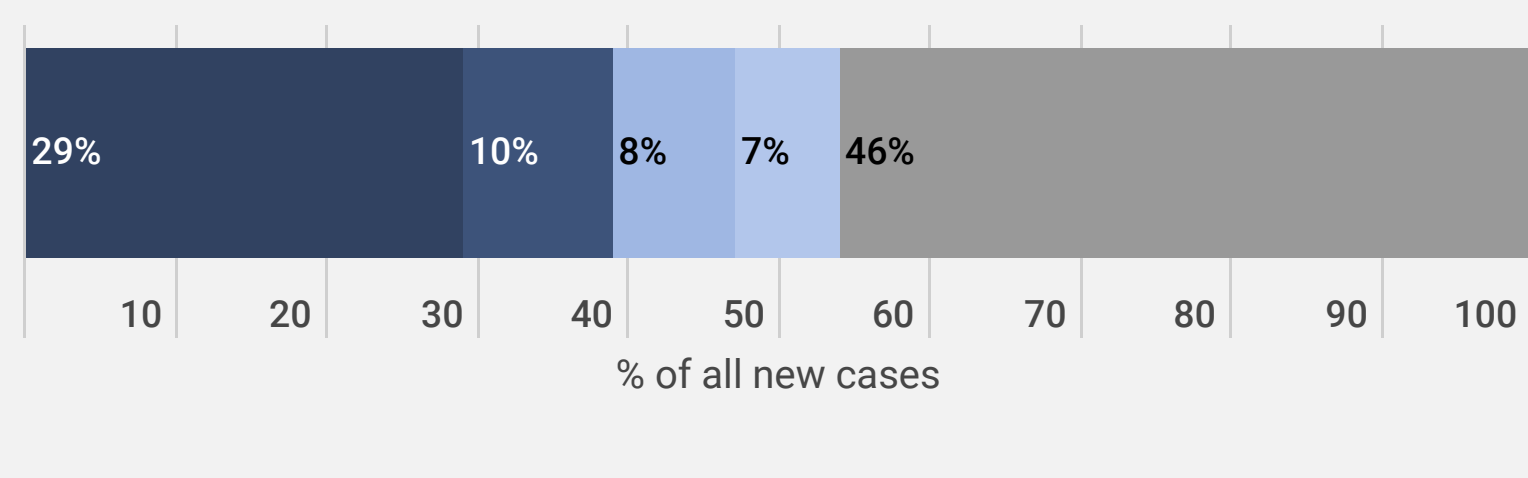
- The number of new cases reported in the Region has increased by 13% since week 28/2020, the number of new deaths has increased by 11% since week 28/2020
- 54% (83,593) of the cases reported in week 29/2020 were reported from four countries: the Russian Federation (29%; 44,384), Kyrgyzstan (10%, 15,903), Kazakhstan (8%; 12,086) and Israel (7%; 11,220). The remaining cases (46%; 70,055) were reported by 48 countries and territories; each accounted for <5% of the total cases reported in week 29/2020
- 12 countries had a crude incidence of ≥ 35 per 100,000 in week 29/2020: Armenia, Israel, Montenegro, Kazakhstan, Luxembourg, Kyrgyzstan, North Macedonia, Bosnia and Herzegovina, Serbia, Republic of Moldova, Azerbaijan and Sweden. The crude incidence continues to vary across the region with a range from 0.5 per 100,000 population in Malta to 144 per 100,000 population in Armenia
- The 14-day cumulative incidence increased by $\geq 10\%$ in week 29/2020 in 27 countries and territories in the Region, however for some countries data was retro-adjusted by national authorities: Albania, Austria, Belgium, Bosnia and Herzegovina, Bulgaria, Croatia, Cyprus, Estonia, France, Georgia, Greece, Hungary, Iceland, Ireland, Israel, Kyrgyzstan, Latvia, Liechtenstein, Lithuania, Luxembourg, Montenegro, Romania, Serbia, Slovakia, Slovenia, Spain, Switzerland and Uzbekistan (see [EURO COVID-19 Dashboard](#) for recent trends)
- 63% (2,353) of the deaths reported in week 29/2020 were reported by the Russian Federation (27%; 1007), Kyrgyzstan (23%, 871) and the United Kingdom (13%; 475). The remaining deaths (37%; 1408) were reported from 39 countries and territories; each accounted for <5% of the total deaths reported in week 29/2020
- The proportion of reported cases that died decreased from 2.5% in week 28/2020 to 2.4% in week 29/2020, a change that is likely due to a range of factors
- Community-transmission was reported by 27 countries and territories, 24 countries and territories reported cluster transmission, while 5 countries and territories reported sporadic transmission in week 29/2020 (see [EURO COVID-19 Dashboard](#))
- Since the emergence of COVID-19 virus in Europe at the end of January 2020, a wide range of public health and social measures (PHSM) have been implemented. See [EURO COVID-19 Dashboard](#) (NPI Explorer) for an interactive snapshot of the temporal relationship between case and death numbers and the introduction and easing of these measures in some countries in the Region. In response to an increase in cases, some countries have recently started reintroducing measures

Summary overview

- The cumulative cumulative cases across the Region increased 5.3% to 3,072,496 cases (from 2,918,848 cases in week 28/2020) and cumulative deaths increased by 1.8% to 207,151 deaths (from 203,390 deaths in week 28/2020)
- As of 26 June 2020, eight countries in the European region had an effective reproductive number significantly over 1: Austria, Bosnia and Herzegovina, Israel, Kazakhstan, Kyrgyzstan, Montenegro, Serbia and Switzerland (See [EpiForecasts](#) and the [CMMID COVID working group COVID-19 Global Summary](#) for latest estimates (See [EpiForecasts](#) and the [CMMID COVID working group COVID-19 Global Summary](#) for latest estimates)
- Six countries in the Region each reported a cumulative incidence of ≥ 600 cases per 100,000 population: Andorra, Armenia, Belarus, Luxembourg, San Marino and Sweden
- As of week 29/2020, 70% (2,165,048) of cumulative cases were reported from the Russian Federation (25%; 771,546), United Kingdom (10%; 294,066), Spain (8%; 260,255), Italy (8%; 244,216), Turkey (7%; 218,717), Germany (7%; 201,574) and France (6%; 174,674). The remaining cases (30%; 907,448) were reported by 54 countries and territories; each accounted for <5% of the total cases reported until week 29/2020
- 27% of all reported infections with information available were in a health care worker
- 76% of all ICU admissions were in persons aged 50-79 years of age, with 71% of all ICU admissions in men
- As of week 29/2020, 78% of cumulative deaths (161,029) were reported from the United Kingdom (22%; 45,273), Italy (17%; 35,042), France (15%; 30,152), Spain (14%; 28,420), the Russian Federation (6%; 12,342) and Belgium (5%; 9,800). The remaining deaths (22%; 46,122) were reported by 51 countries and territories; each accounted for <5% of the total cases reported until week 29/2020
- 90% of all deaths were in persons aged ≥ 65 years and 58% of all deaths were in men
- 95% of all deaths with information available had at least one underlying condition, with cardiovascular disease the leading comorbidity (81%)
- Following a period of a very substantial excess mortality observed in some countries coinciding with the COVID-19 pandemic, pooled estimates of all-cause mortality for the countries in the EuroMOMO network have now returned to normal levels. A few countries are still seeing some excess mortality. Excess mortality was observed primarily in the age group of ≥ 65 years, followed by the age group of 45-64 years and 15-44 years
- In week 29/2020, five countries reported 129 tests and 5 COVID-19 detections in persons with influenza-like illness in primary care sentinel surveillance. The updated positivity rate in week 28/2020 was 5.4% (5 countries) compared to 2.1% (5 countries) in week 27/2020. The highest positivity was 14.6%, seen in week 15/2020

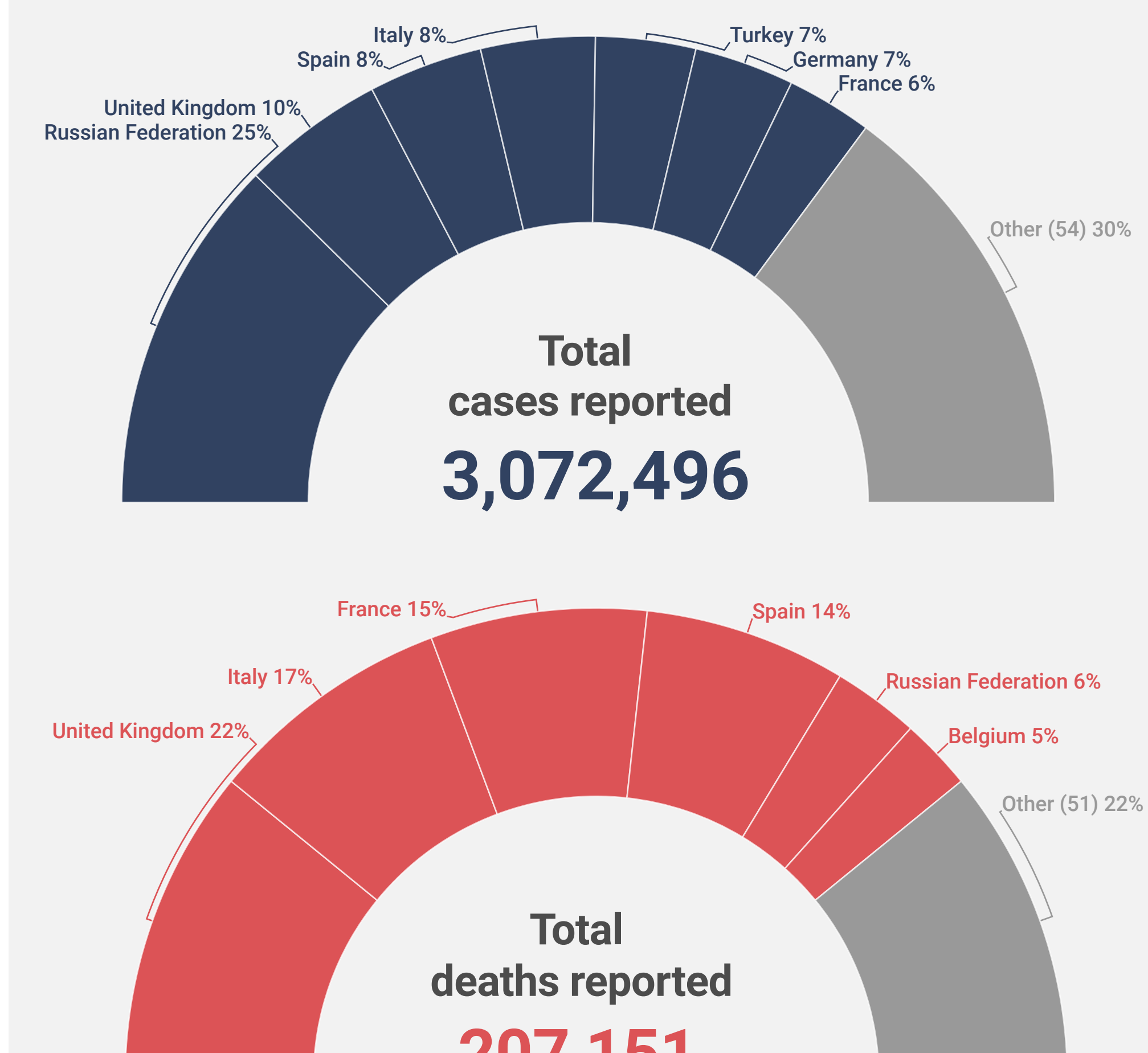
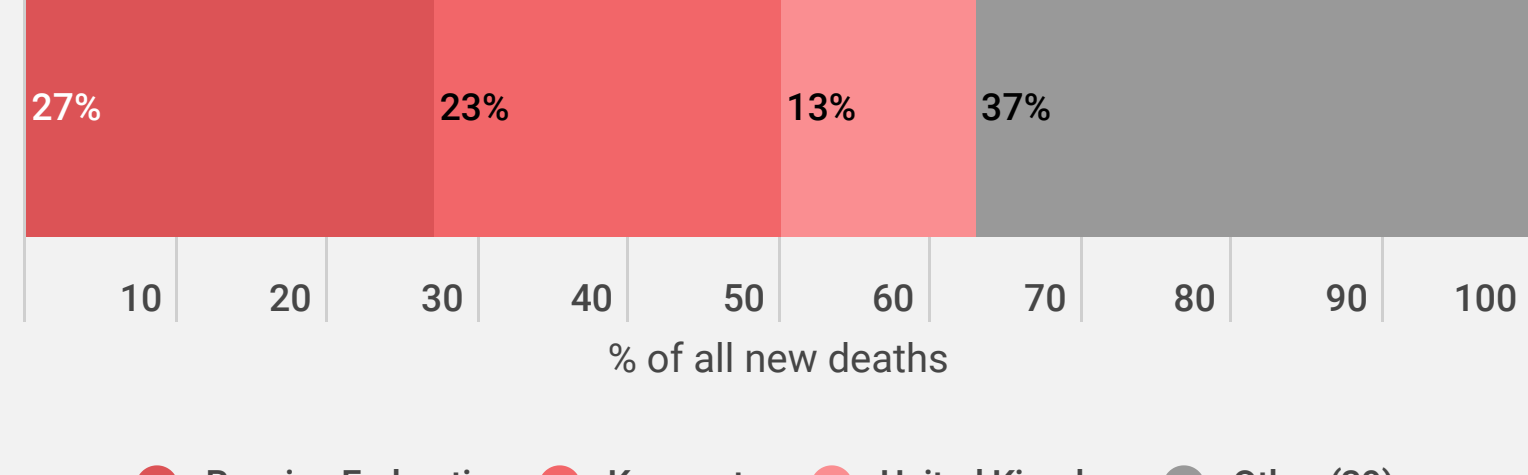
New cases Epi week 29

153,648



New deaths Epi week 29

3,761



- 27%** of all people infected were health care workers
- 95%** of all deaths had at least 1 underlying condition
- 58%** of all deaths were in men
- 76%** of all ICU admissions were people aged 50-79 years
- 90%** of all deaths were in persons aged 65+
- 81%** of all deaths had cardiovascular disease

For more detailed information see: [WHO Global situation reports](#) [WHO Global situation dashboard](#)

Figure 1: Number of COVID-19 cases (N=3,072,496) and deaths (N=207,151) by reporting week

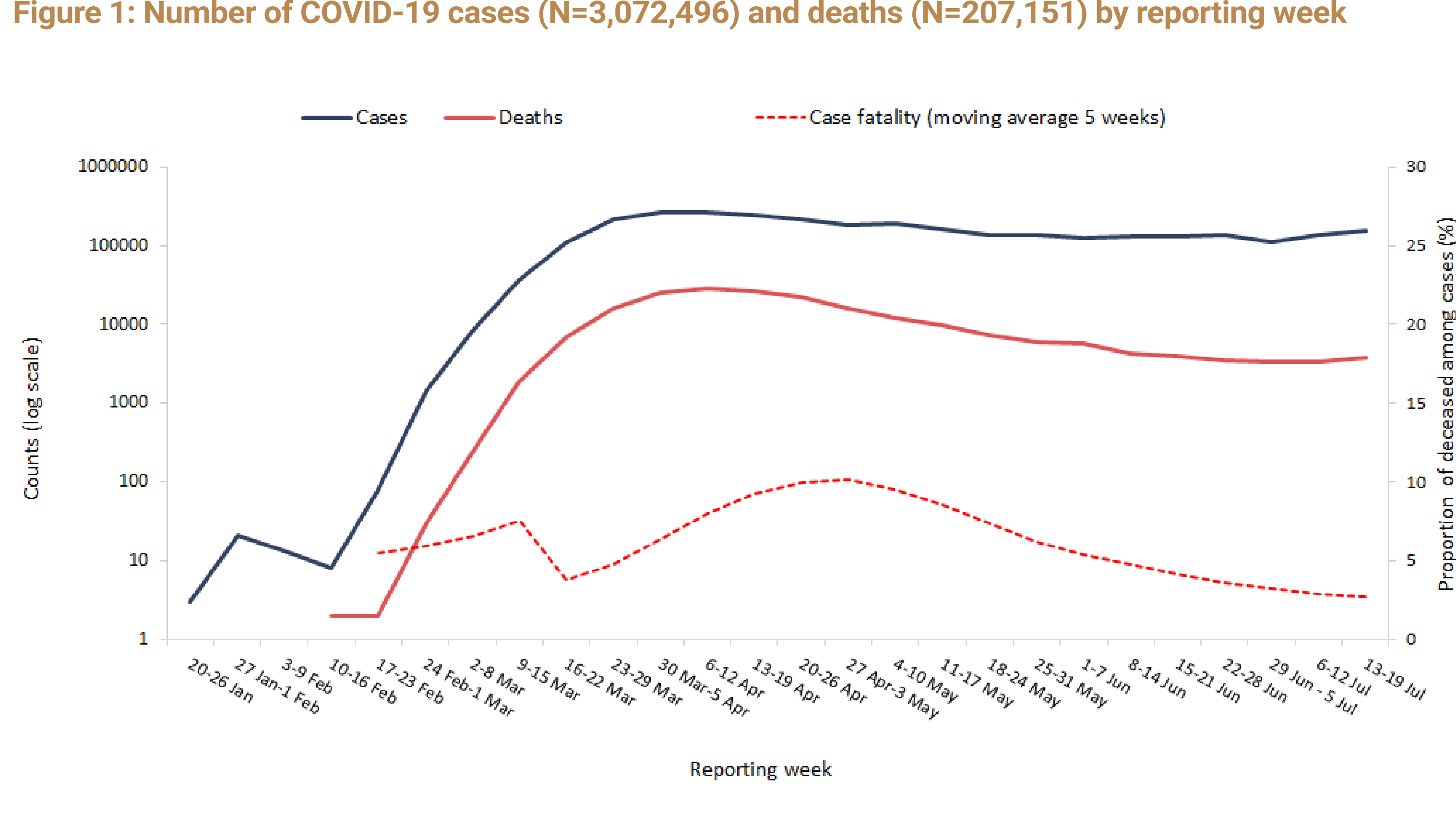
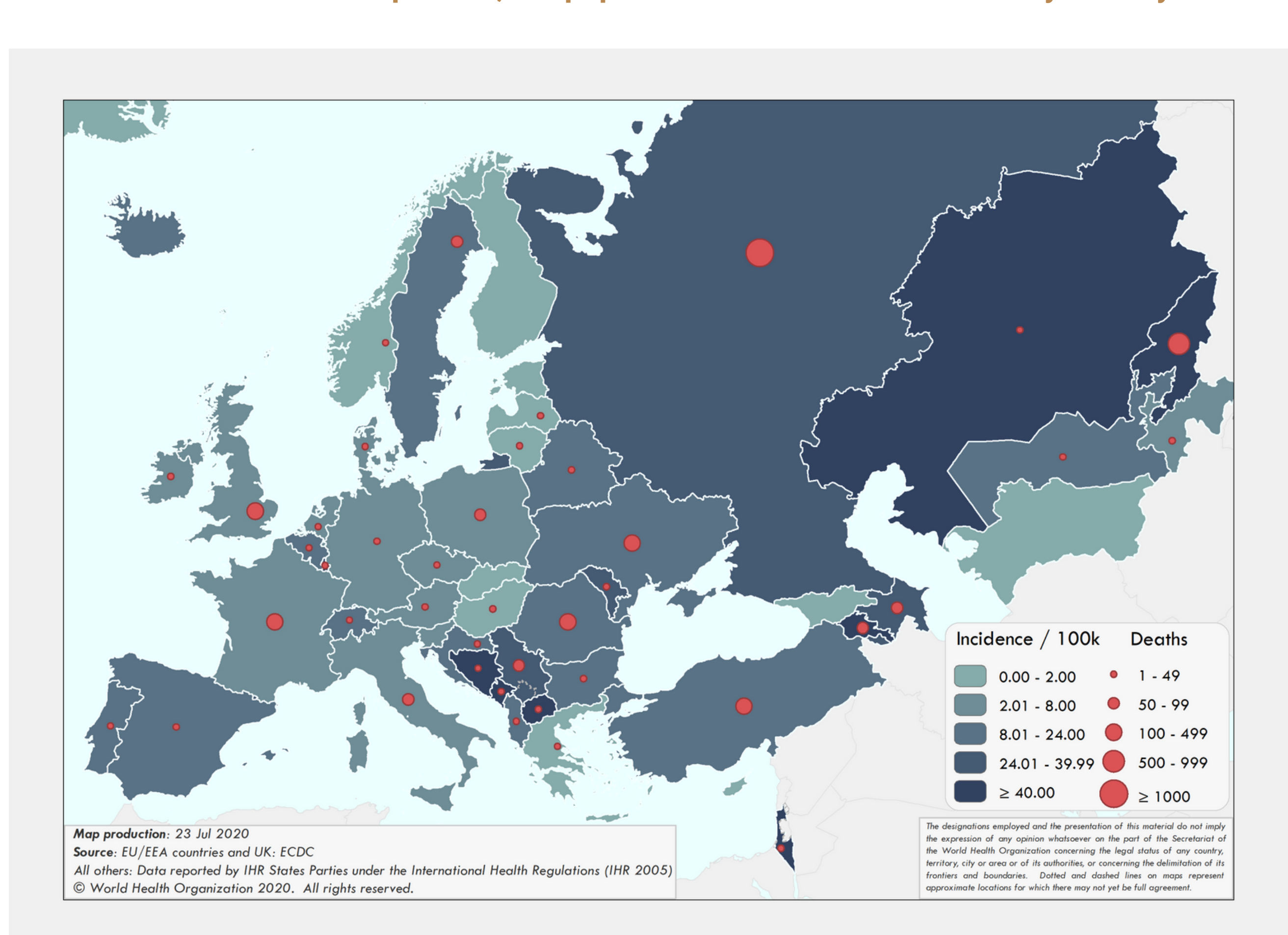
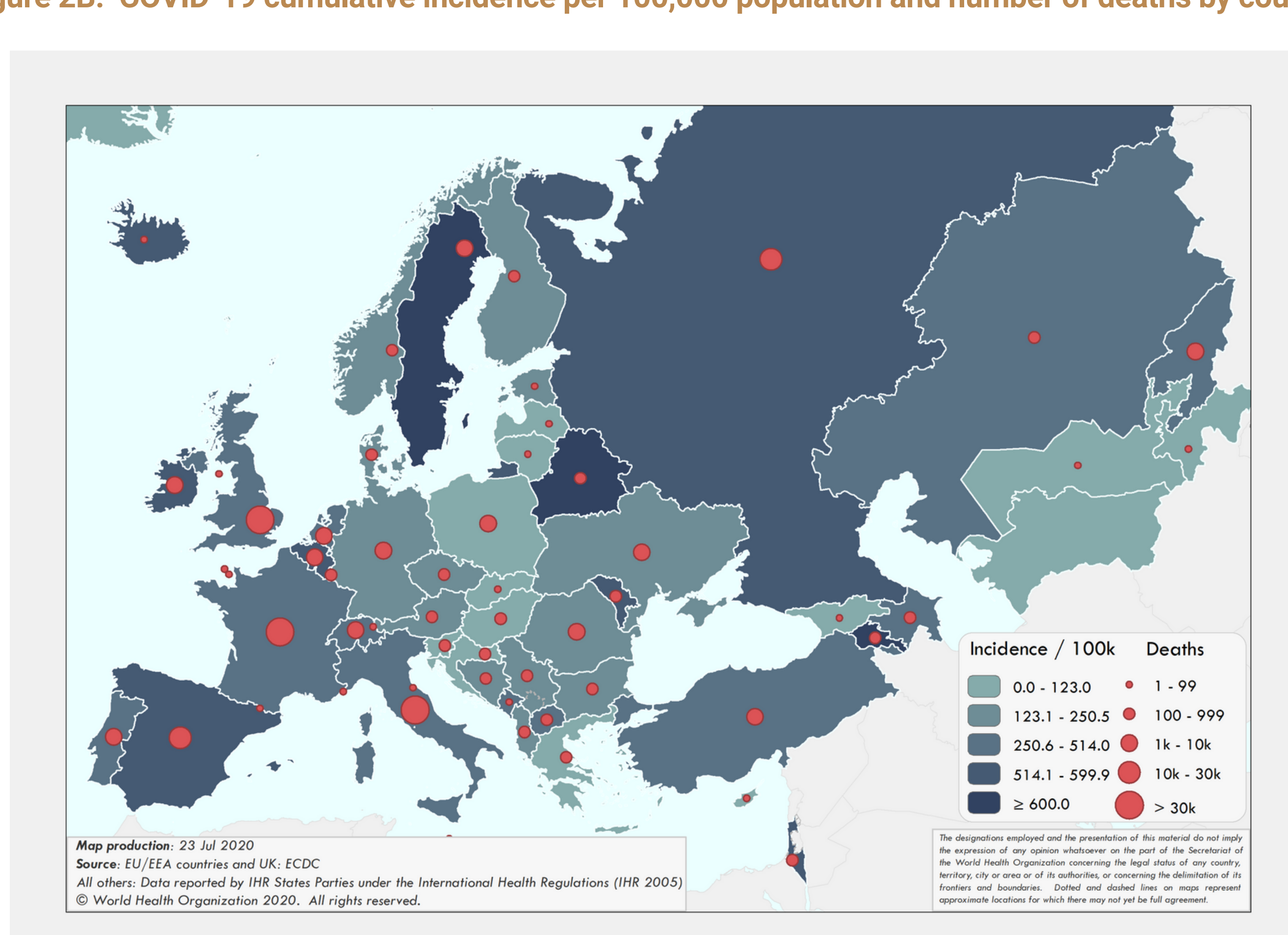


Figure 2A. COVID-19 incidence per 100,000 population and number of deaths by country for week 29



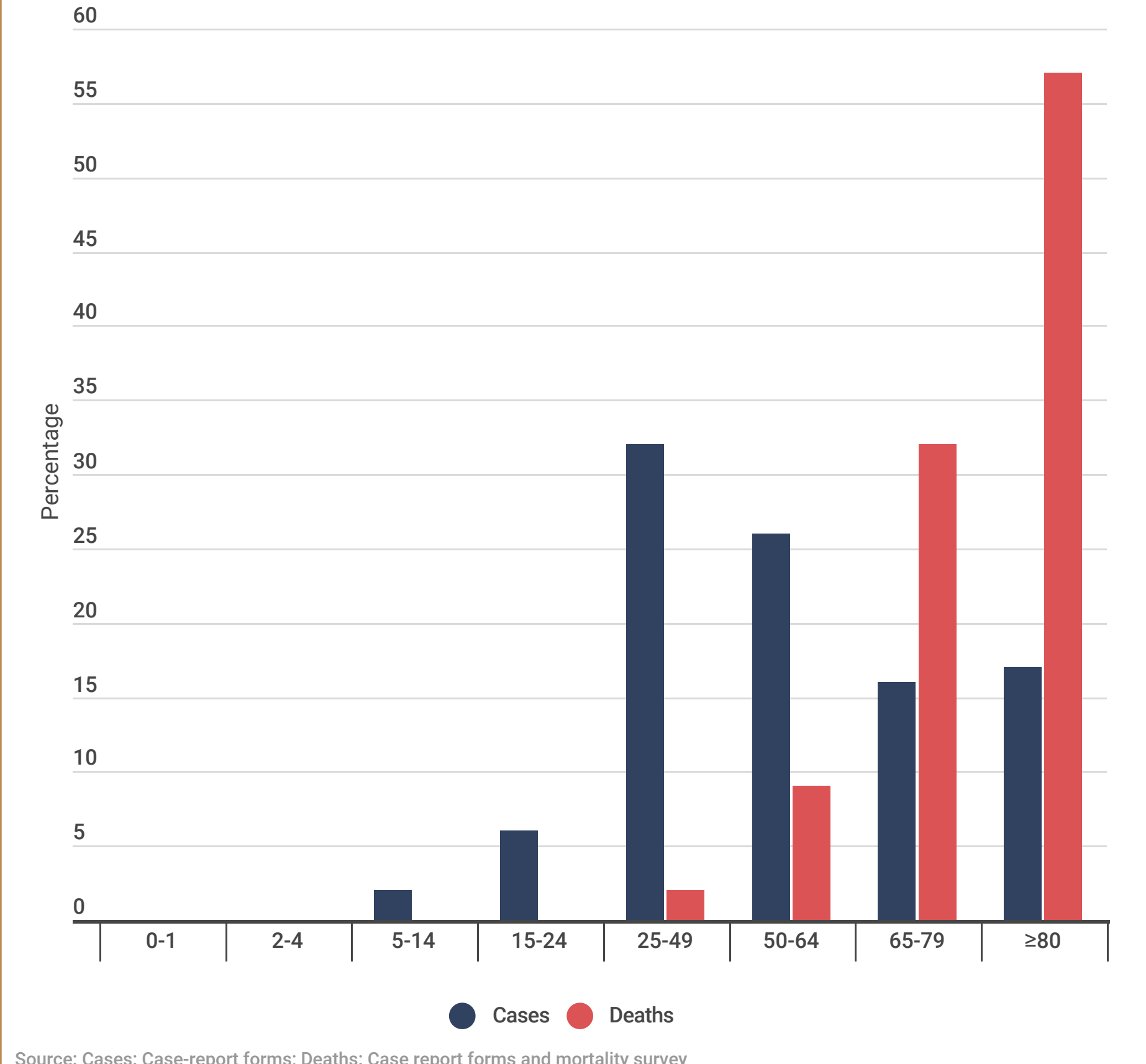
The designations employed and the presentation of the information in this Web site do not imply the expression of any opinion whatsoever on the part of the Secretariat of the World Health Organization concerning the legal status of any country, territory, city or area or of its authorities, or concerning the delimitation of its frontiers or boundaries.

Figure 2B. COVID-19 cumulative incidence per 100,000 population and number of deaths by country



The designations employed and the presentation of the information in this Web site do not imply the expression of any opinion whatsoever on the part of the Secretariat of the World Health Organization concerning the legal status of any country, territory, city or area or of its authorities, or concerning the delimitation of its frontiers or boundaries.

Figure 3. Percentage of COVID-19 cases (N=551,346) and deaths (N=136,641) by age group



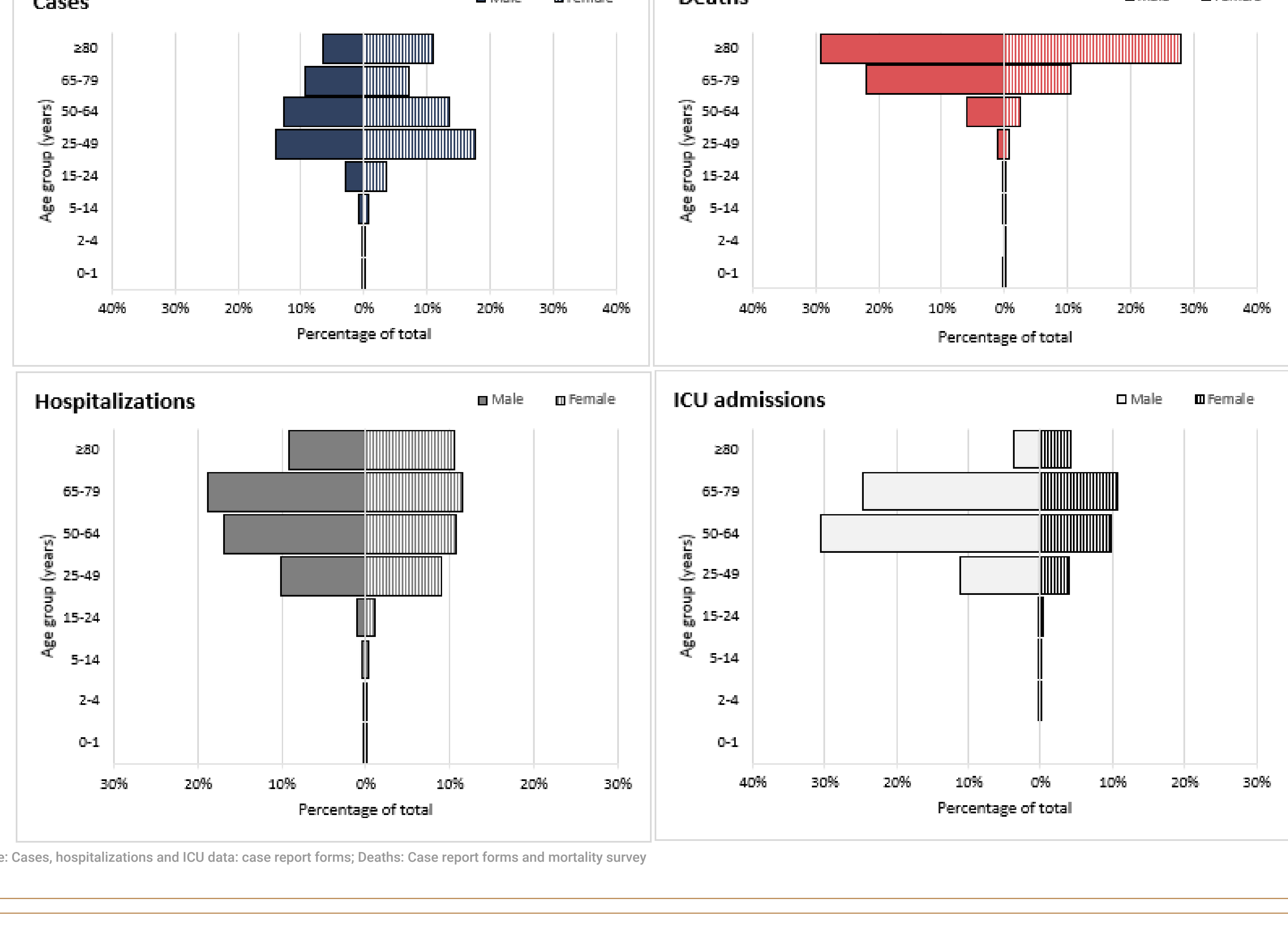
Source: Cases: Case-report forms; Deaths: Case report forms and mortality survey

Table 1. Characteristics of COVID-19 cases and deaths

Characteristics	n	%	Total records with data available
Cases			
Age in years, median (range)	55 (1-105)		551,326
Sex, male	255,185	46	549,295
Recovered	205,687	91	226,657
Health care workers	42,549	27	155,077
Hospitalization	49,401	20	248,916
Intensive care unit admissions	5,149	2	280,258
Deaths			
Age in years, median (range)	82 (0-108)		136,641
Sex, male	79,508	58	136,698
At least one underlying condition	39,518	95	41,594
• cardiovascular disease	8,585	81	10,622
• diabetes	2,827	50	5,692
• lung disease	2,927	51	5,791
• neurological disease / dementia	3,009	38	7,886
• renal disease	821	24	3,446
• obesity	256	10	2,650
• liver disease	411	7	6,116
• immune disease	91	3	2,684
• other	1,423	35	4,121

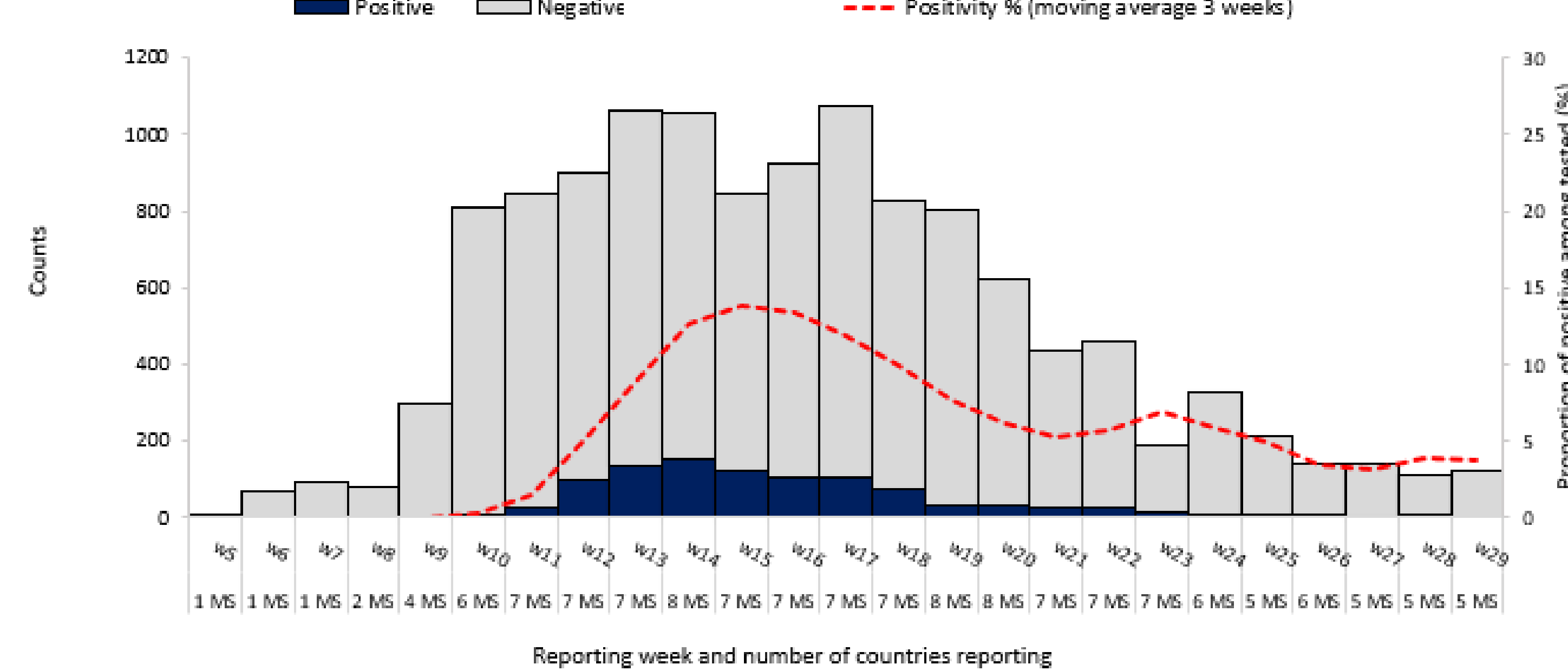
Source: *Case report forms (n=553,810); Health care workers refer to occupation and not to the place of exposure
*Case report forms and mortality survey (n=136,657)

Figure 4. Percentage of COVID-19 cases (N=547,017), hospitalizations (N=48,956), ICU admissions (N=5,051) and deaths (N=136,388) by age group and sex



Source: Cases, hospitalizations and ICU data: case report forms; Deaths: Case report forms and mortality survey

Figure 5. Percentage positive for COVID-19 in the ILI/ARI sentinel surveillance by reporting week



Source: Aggregate data from TESSy. MS: Member State