

Germany

Population: 81 914 672 | Income group: High | Gross national income per capita: US\$ 43 660



INSTITUTIONAL FRAMEWORK	
Lead agency	Federal Ministry of Transport and Digital Infrastructure (BMVI)
Funded in national budget	Yes
National road safety strategy	Yes
Funding to implement strategy	Partially funded
Fatality reduction target	40% (2011-2020)
SAFER ROADS AND MOBILITY	
Audits or star rating required for new road infrastructure	Yes
Design standards for the safety of pedestrians / cyclists	Yes
Inspections / star rating of existing roads	Yes
Investments to upgrade high risk locations	Yes
Policies & investment in urban public transport	No
SAFER VEHICLES	
Total registered vehicles for 2016	56 622 000
Cars and 4-wheeled light vehicles	45 071 000
Motorized 2- and 3-wheelers	6 248 000
Heavy trucks	4 942 000
Buses	78 000
Other	283 000
Vehicle standards applied (UNECE WP.29)	
Frontal impact standard	Yes
Electronic stability control	Yes
Pedestrian protection	Yes
Motorcycle anti-lock braking system	Yes
POST-CRASH CARE	
National emergency care access number	National, single number
Trauma registry	Some facilities
Formal certification for prehospital providers	Yes
National assessment of emergency care systems	Yes
DATA	
Reported road traffic fatalities (2016)	3 206 ^a (73% M, 27% F)
Reported rate per 100 000 population (2016)	3.9 ^a
WHO estimated road traffic fatalities (2016)	3 327 ^b
WHO estimated rate per 100 000 population (2016)	4.1 ^b

^a Federal Statistical Office. Died within 30 days of crash

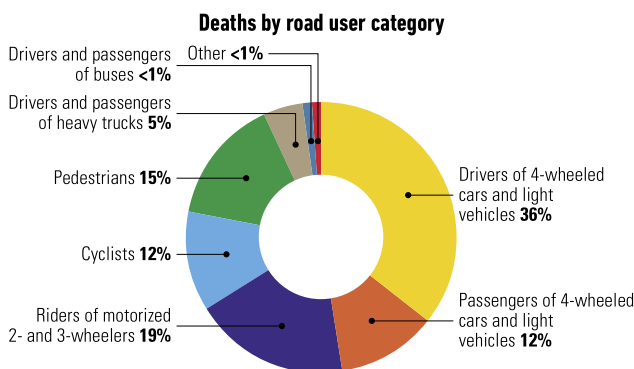
^b WHO's method to obtain comparable country estimates: Group 1. Countries/areas with good death registration data. See explanatory note 3 in *Global status report on road safety 2018* for full details

SAFER ROAD USERS	
National speed limit law	Yes
Max urban speed limit	50 km/h
Max rural speed limit	100 km/h
Max motorway speed limit	No ^c
Local authorities can modify limits	Yes
Self-reported enforcement	—
Predominant type of enforcement	—
National drink-driving law	
BAC limit – general population	< 0.05 g/dl
BAC limit – young or novice drivers	0.00 g/dl
Random breath testing carried out	Yes
Testing carried out in case of fatal crash	Some drivers tested
Self-reported enforcement	—
% road traffic deaths involving alcohol	7% ^d
National motorcycle helmet law	
Applies to drivers and passengers	Yes
Helmet fastening required	No
Helmet standard referred to and/or specified	No
Children passengers on motorcycles	Not restricted
Self-reported enforcement	—
Helmet wearing rate	99% Drivers ^e , 100% Passengers ^e
National seat-belt law	
Applies to front and rear seat occupants	Yes
Self-reported enforcement	—
Seat-belt wearing rate	98% Front seats ^e , 99% Rear seats ^e
National child restraint law	
Children seated in front seat	Allowed in a child restraint
Child restraint required	Up to 12 yrs/150 cm
Child restraint standard referred to and/or specified	Yes
Self-reported enforcement	—
% children using child restraints	97-99% ^e
National law on mobile phone use while driving	
Ban on hand-held mobile phone use	Yes
Ban on hands-free mobile phone use	No
National drug-driving law	
	Yes

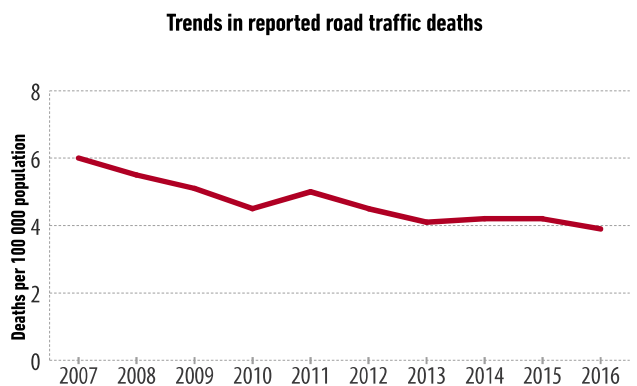
^c There is no maximum speed limit on motorways

^d 2016, Federal Statistical Office

^e 2015, Federal Highway Research Institute (BAST)



Source: 2016, Federal Statistical Office



Source: Federal Statistical Office