



# Enhancing health systems' resilience in Europe

Zsuzsanna Jakab

WHO Regional Director for Europe

16th European Health Forum Gastein  
Gastein, Austria  
2–4 October 2013



World Health  
Organization

REGIONAL OFFICE FOR  
Europe



Organisation  
mondiale de la Santé

BUREAU RÉGIONAL DE L'  
Europe



Weltgesundheitsorganisation

REGIONALBÜRO FÜR  
Europa



Всемирная организация  
здравоохранения

Европейское региональное бюро

# Health2020: working towards resilient health systems

Two strategic objectives:

1. Improving health for all and reducing health inequalities
2. Improving leadership and participatory governance for health

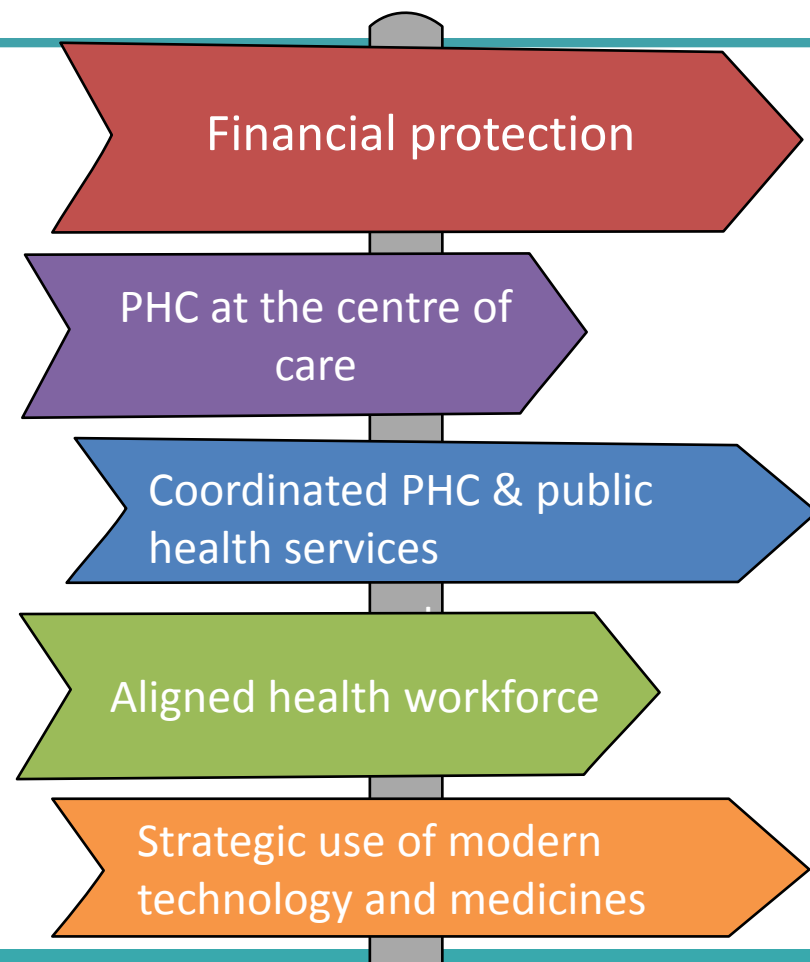
Four priority areas:

The image displays four cards from the WHO European policy framework for health and well-being, titled 'HEALTH 2020'. Each card represents a priority area and includes strategic objectives and the WHO logo. The 'Health systems' card is highlighted with a blue oval.

- Life-course approach**  
Invest in health through life-course approach and empower citizens  
  
Strategic objectives: Reducing inequalities, Better governance  
WHO European policy framework for health and well-being  
**HEALTH 2020**
- Burden of disease**  
Tackle Europe's major disease burdens of noncommunicable and communicable diseases  
  
Strategic objectives: Reducing inequalities, Better governance  
WHO European policy framework for health and well-being  
**HEALTH 2020**
- Health systems**  
Strengthen people-centred health systems and public health capacity  
  
Strategic objectives: Reducing inequalities, Better governance  
WHO European policy framework for health and well-being  
**HEALTH 2020**
- Resilient communities**  
Create supportive environments and resilient communities  
  
Strategic objectives: Reducing inequalities, Better governance  
WHO European policy framework for health and well-being  
**HEALTH 2020**

# Universal health coverage (UHC): How we get there through the Health 2020 lens

- Transforming financing arrangements to overcome sustainability concerns
- Positioning primary health care (PHC) as the hub for other levels of care
- Ensuring coordination across PHC and public health services
- Revitalizing a flexible, multiskilled workforce with aligned task profiles
- Strategizing the use of modern technology and medicines for maximum benefits



# Tallinn Charter and 35<sup>th</sup> anniversary of Declaration of Alma-Ata



Tallinn, 2008



Alma-Ata, 1978

# Enabling PHC to lead people-centred, coordinated/integrated service delivery



Developing tools for improving performance and ensuring quality (e.g. guidelines, aligned incentives, etc.)



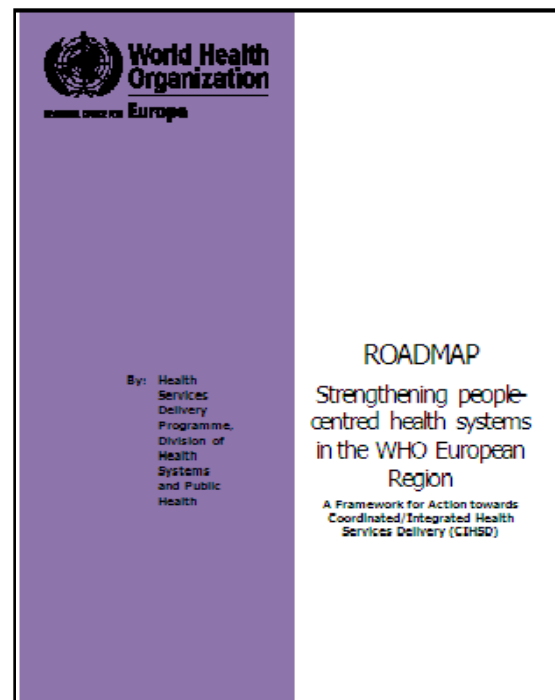
Supporting a skilled, motivated and available workforce, including managerial and leadership competencies



Engaging patients, carers and communities for tailored services, according to their needs and preferences



Enabling channels for the coordinated flow of information and communication



# Strengthening health systems for better NCD outcomes

BACKGROUND PAPER

## IMPROVING OUTCOMES FOR NON-COMMUNICABLE DISEASES THROUGH HEALTH SYSTEM STRENGTHENING

A BACKGROUND NOTE

Professor Marc J. Roberts  
Dr. Mary-Ken Stevenson

VERSION 4  
July 2, 2013



GUIDE

## Health System Barriers and Innovations for Better NCD Outcomes

Country Assessment Guide

WHO Regional Office for Europe  
DSP & DNP

VERSION 6  
May 4, 2013



TURKEY

## Health System Barriers and Innovations for Better NCD Outcomes

Country Assessment

Melitta Jakob  
Loraine Hawkins  
Belinda Loring  
Juan Tello

DRAFT FOR REVIEW WITH LIMITED DISTRIBUTION  
VERSION 3  
August 1, 2013



Kyrgyzstan

## Health System Barriers and Innovations for Better NCD Outcomes

Country Assessment

Melitta Jakob (WHO) Aida Abdrahmanova (HPAC)  
Barton Smith (USAID/QIP) Adyl Temirov (HPAC)  
Nina Sazhenkova (WHO) Ryskul Kadyralieva (NCT)  
Soyunjan Mukeeva (FGPA)  
Larissa Muzakalimova (RMIIC)

VERSION 3. DRAFT – NOT FOR CITATION  
August 5, 2013



# Investing in health and the economics of prevention

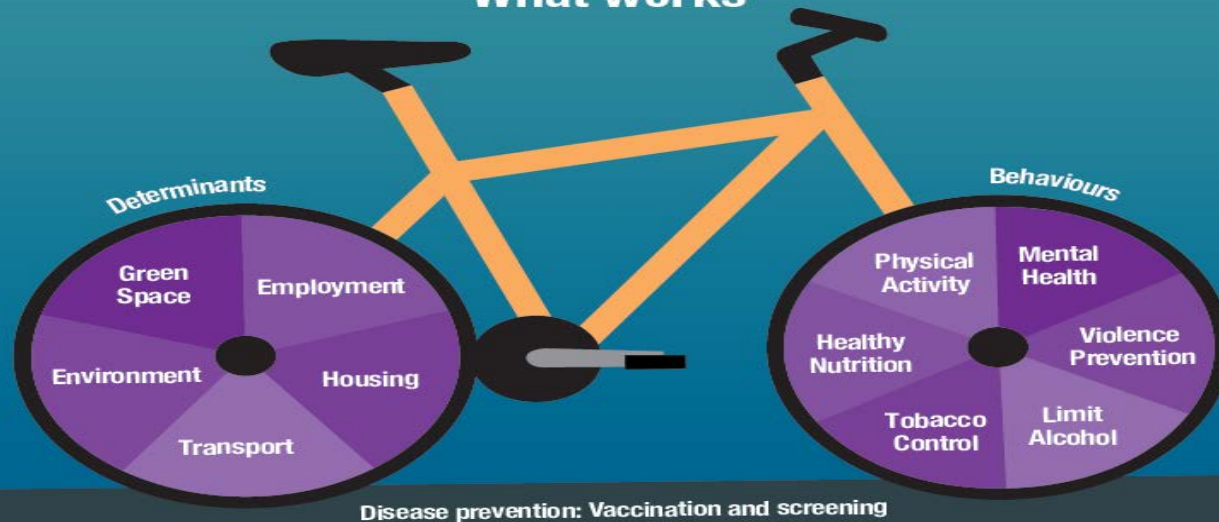


## Invest to save and improve health

### Public health can be part of the solution:

Investment in prevention reduces health costs and lowers welfare benefits  
Promoting health and well-being enhances resilience, employment and social outcomes

### What works



# Upstream investment to ensure resilience: acting on the social determinants

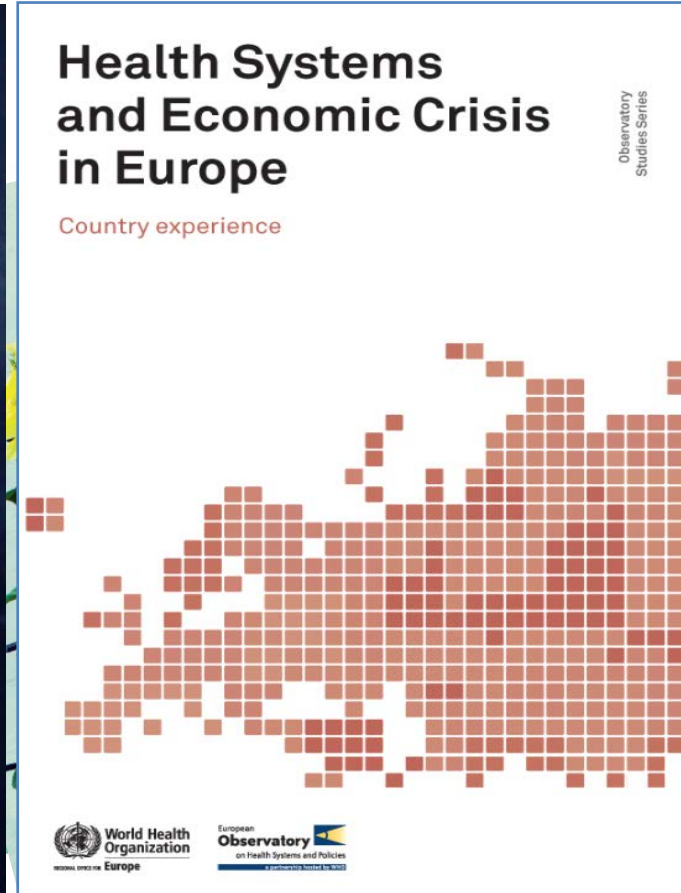


Review of social determinants  
and the health divide in  
the WHO European Region:  
final report





# Effective response to the financial crisis





WHO Regional Office for Europe  
**Division of  
Health Systems  
and Public Health**



**World Health  
Organization**

REGIONAL OFFICE FOR **Europe**



**THANK YOU**

<http://www.euro.who.int/en/what-we-do/health-topics/Health-systems>