



Inequalities in health: challenges and opportunities in Europe

Dr Zsuzsanna Jakab

WHO Regional Director for Europe

*21st Congress of the European Association of Dental
Public Health*

1 October 2016 Budapest



**World Health
Organization**

REGIONAL OFFICE FOR
Europe



**Organisation
mondiale de la Santé**

BUREAU RÉGIONAL DE L'
Europe



Weltgesundheitsorganisation

REGIONALBÜRO FÜR
Europa



**Всемирная организация
здравоохранения**

Европейское региональное бюро





Better health for Europe
More equitable and sustainable



World Health Organization
REGIONAL OFFICE FOR **Europe**



Organisation mondiale de la Santé
BUREAU RÉGIONAL DE L' **Europe**



Weltgesundheitsorganisation
REGIONALBÜRO FÜR **Europa**



Всемирная организация здравоохранения
Европейское региональное бюро

The new global framework: United Nations 2030 Agenda for Sustainable Development

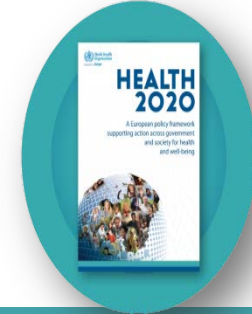


Towards a roadmap for implementation of Sustainable Development Goals (SDGs) in the Region

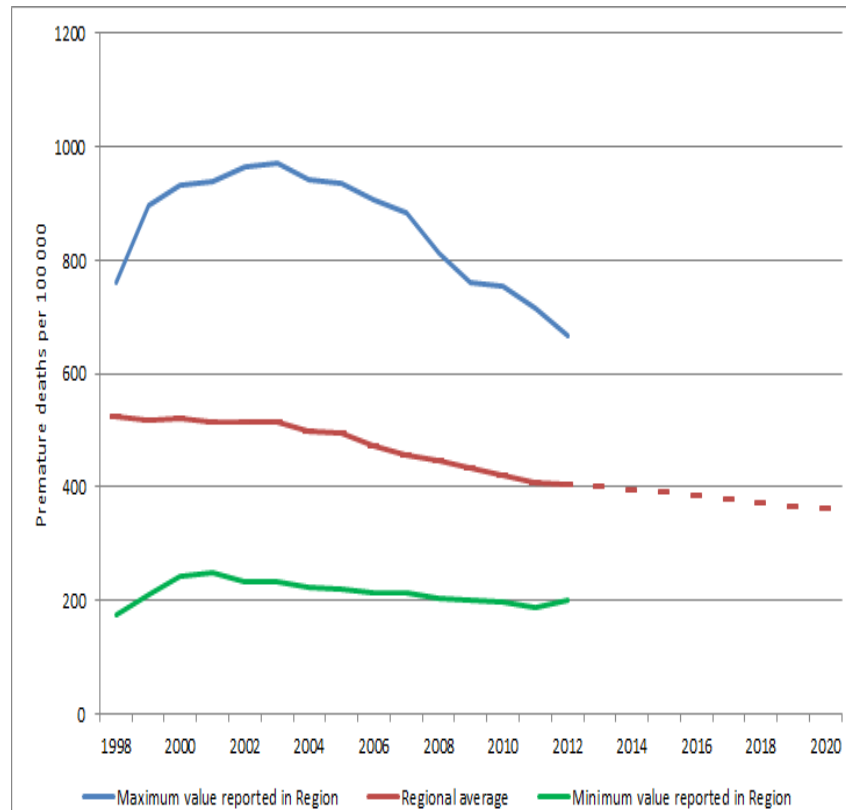




We are on track to create a healthier Europe



Life expectancy



Premature mortality

Yet challenges remain

ALCOHOL CONSUMPTION



11

litres of pure alcohol is drunk per person per year

OVERWEIGHT AND OBESITY



59%

of the population is overweight or obese

TOBACCO USE



30%

of the population uses tobacco



What is Health 2020?

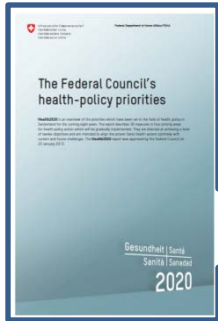
Health is a political choice

- Public health policy framework to improve health and reduce inequities
- Focus on upstream actions and addressing root causes of ill health – addressing all determinants systematically early on, before diseases emerge
- Higher and broader reach

Countries are taking up the Health 2020 challenge



PUBLIC HEALTH STRATEGY FOR 2011-2017



European health report 2015

Main aims:

- to report on progress towards the Health 2020 targets (since 2010 baseline)
- to highlight new frontiers in health information and evidence, including subjective well-being measurements



HEALTH 2020

A European policy framework and strategy for the 21st century



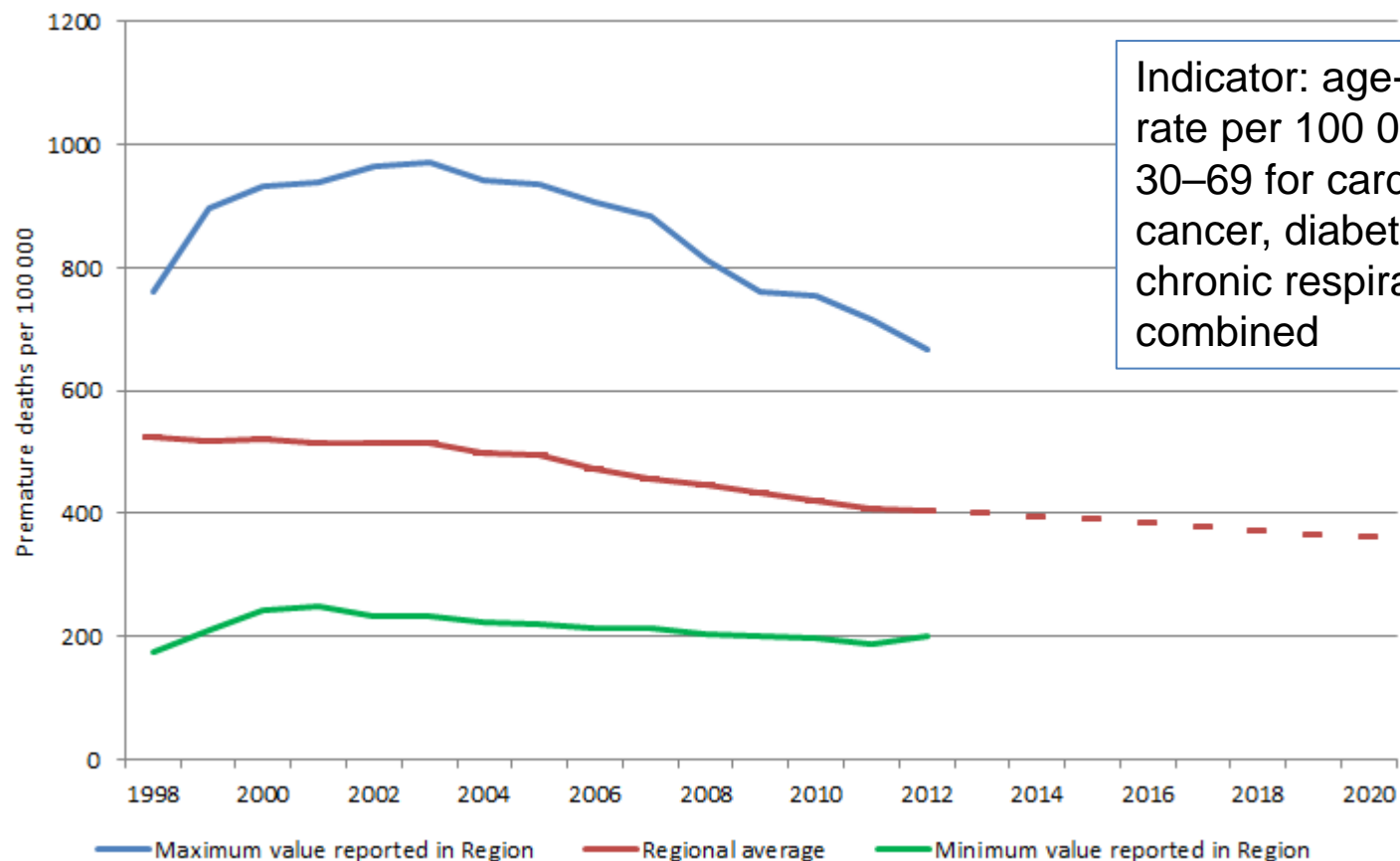
Premature mortality

Regional Health 2020 target: a 1.5% relative annual reduction in premature mortality from cardiovascular diseases, cancer, diabetes and chronic respiratory diseases until 2020



Although the European Region is on track to achieve the Health 2020 target to reduce premature mortality, much more can be done to address the determinants for faster progress

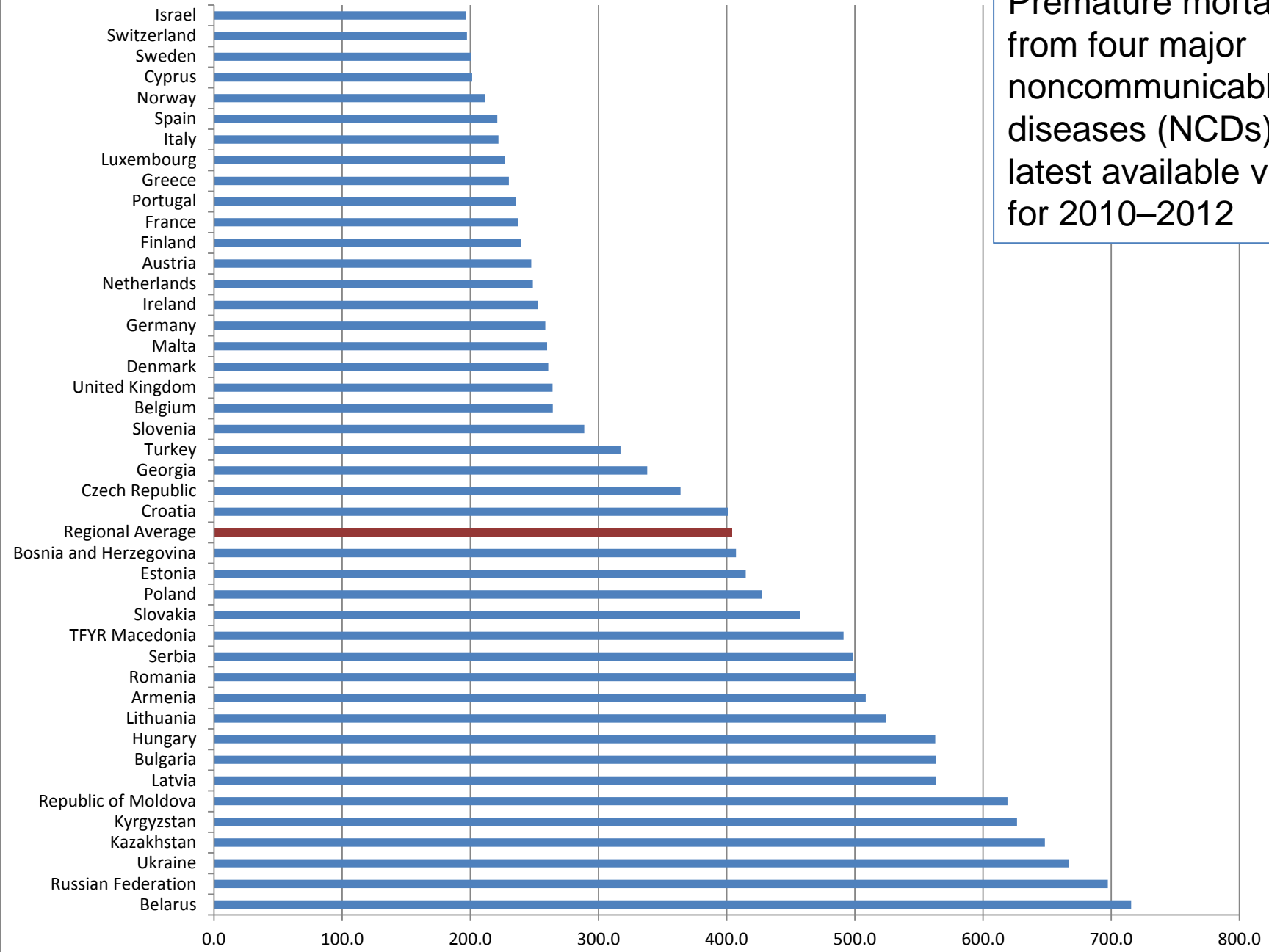
Regional trend





Premature mortality

Premature mortality from four major noncommunicable diseases (NCDs), latest available value for 2010–2012



Inequalities in oral health



Challenges and opportunities

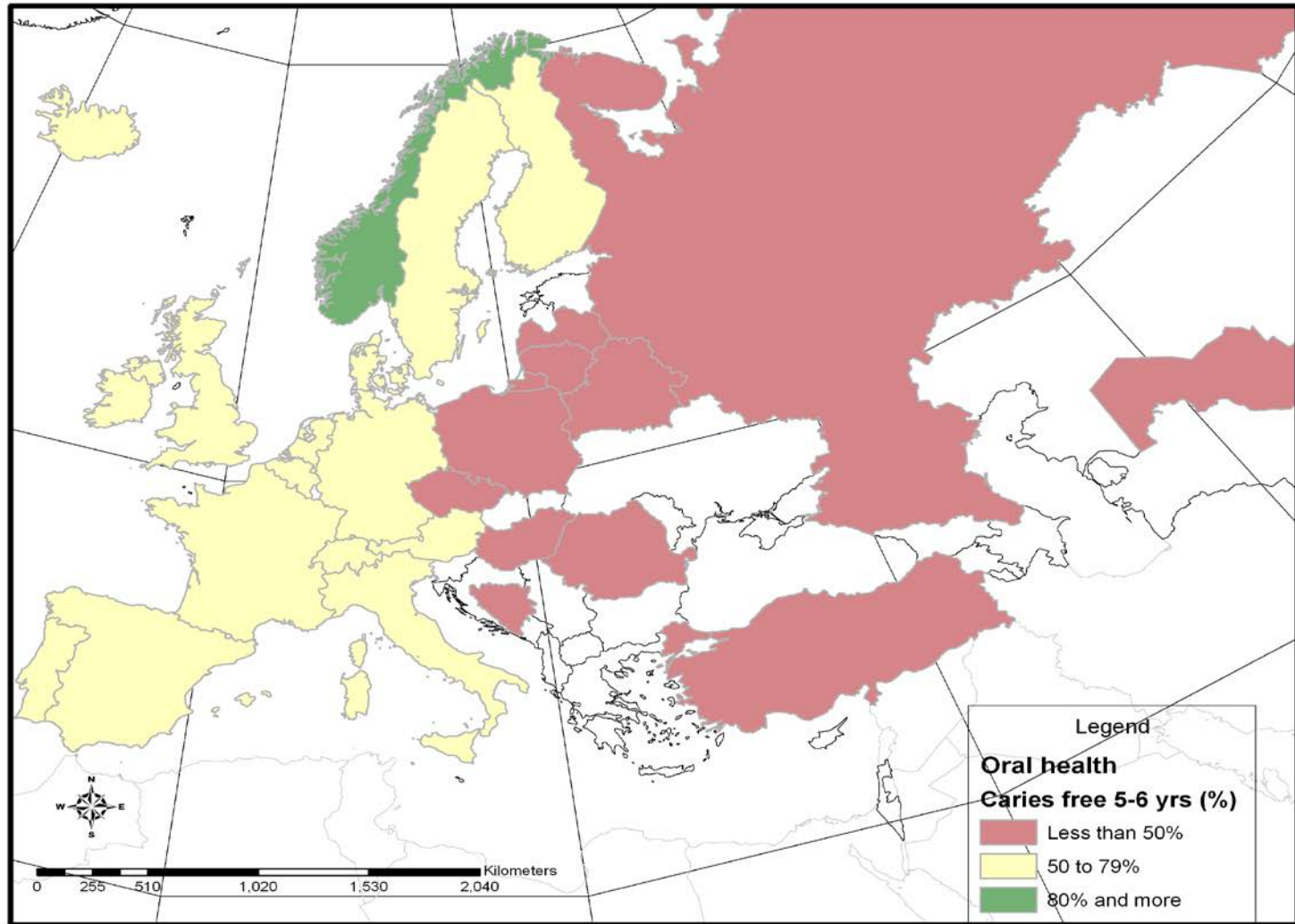
- Across Europe, a high relative risk of oral disease is related to socioeconomic determinants.
- *The major oral diseases are avoidable through effective prevention and health promotion.*
- Reducing social inequities in oral health depends solely on political will.



Inequities in health and health care

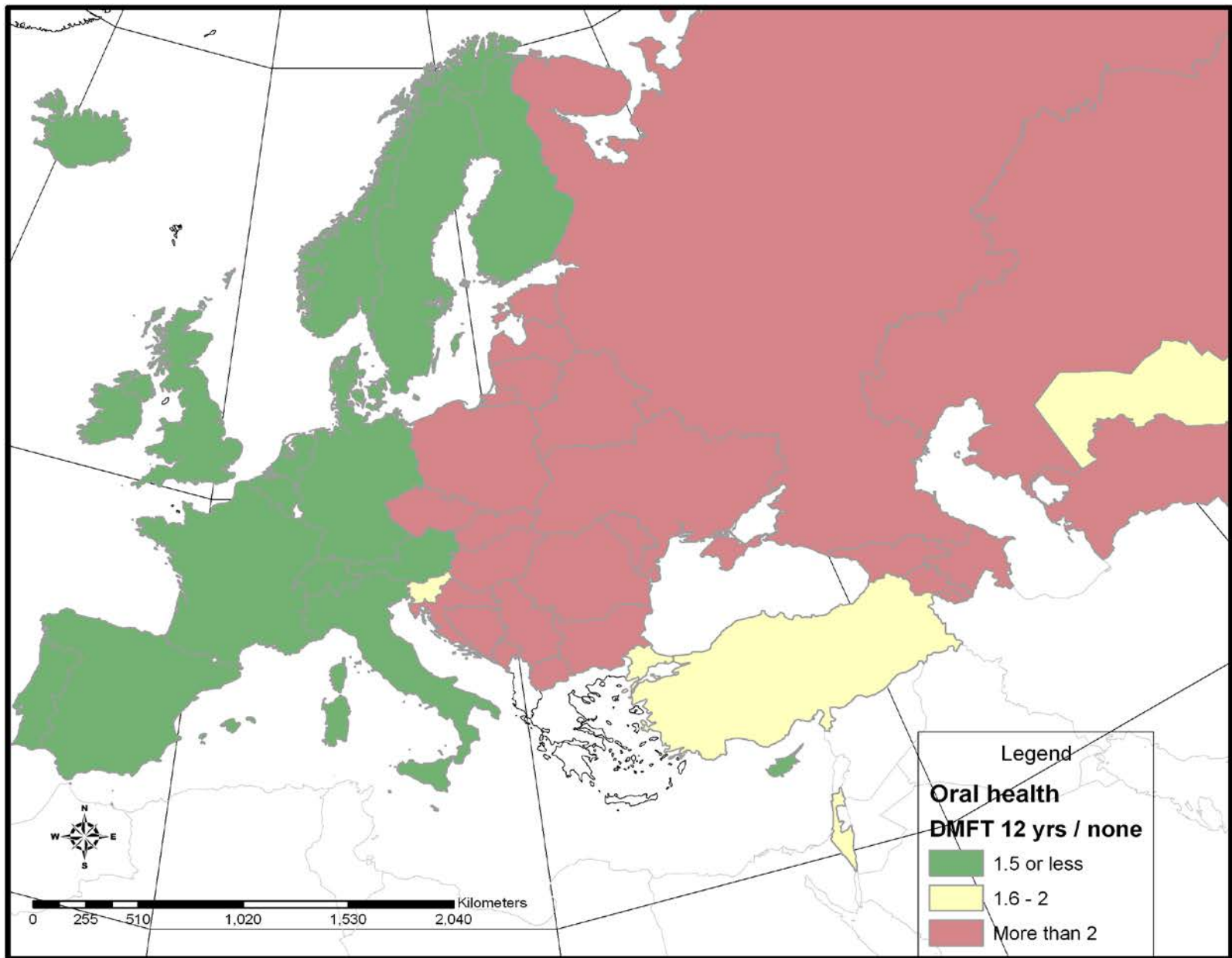
- Between countries
- Within countries
 - *Income*
 - *Education*
 - *Occupation*
 - *Gender*
 - *Age*
 - *Residence*
 - *Ethnicity*

Caries free children in European countries, 2011



Dr. PE Petersen, WHO 2012

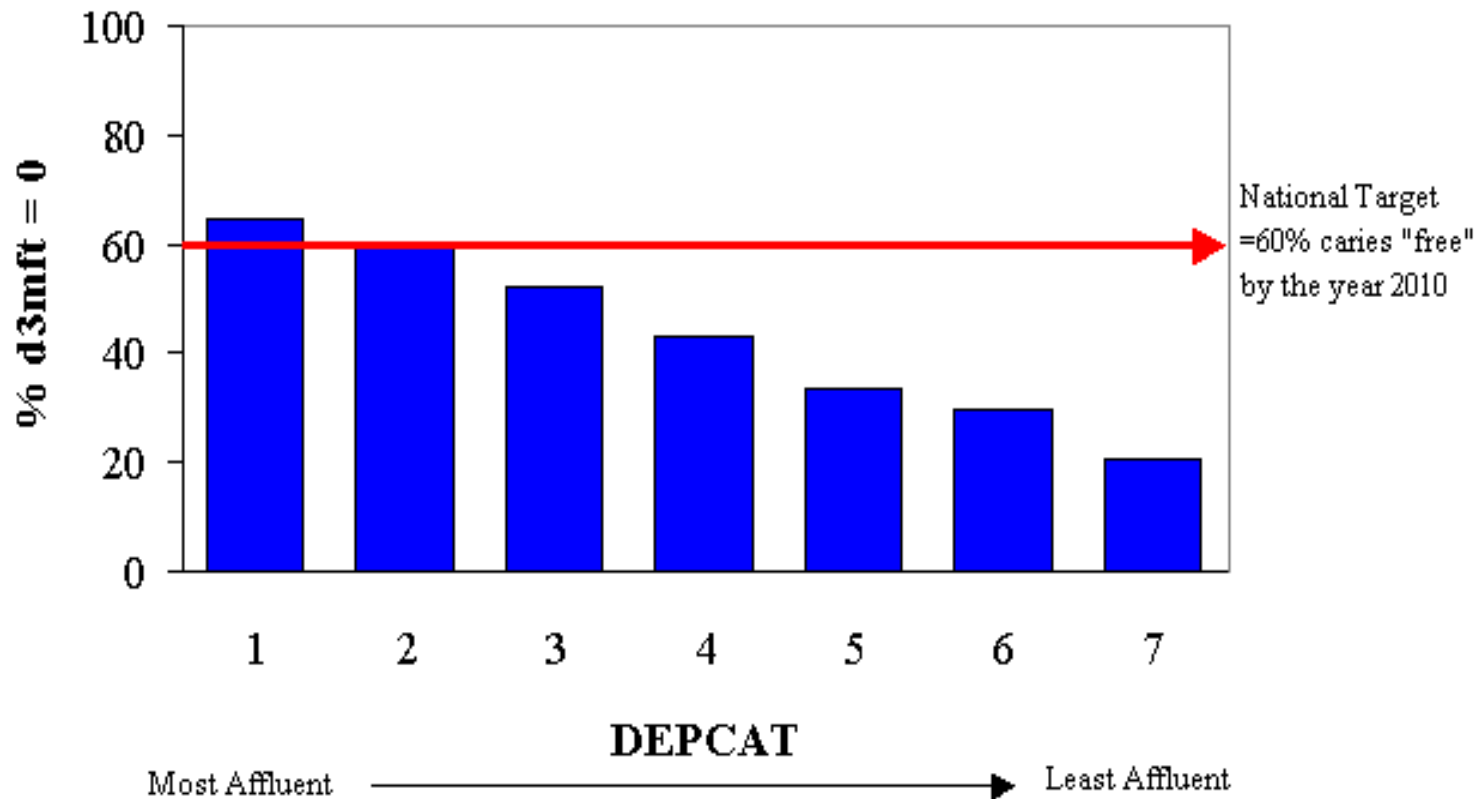
DMFT index of children in European countries, 2011





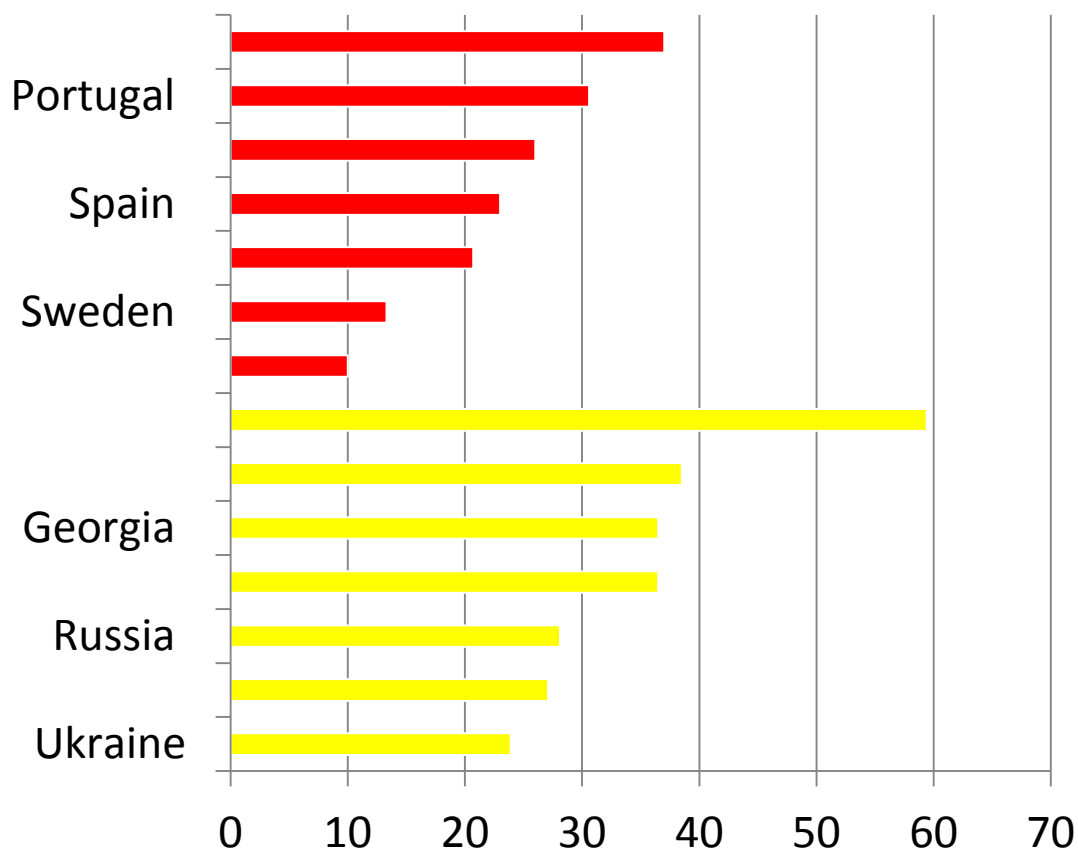
Within-country inequalities in oral health

Percentage of Scottish 5-year-olds "free" of dental caries by deprivation (DEPCAT) score

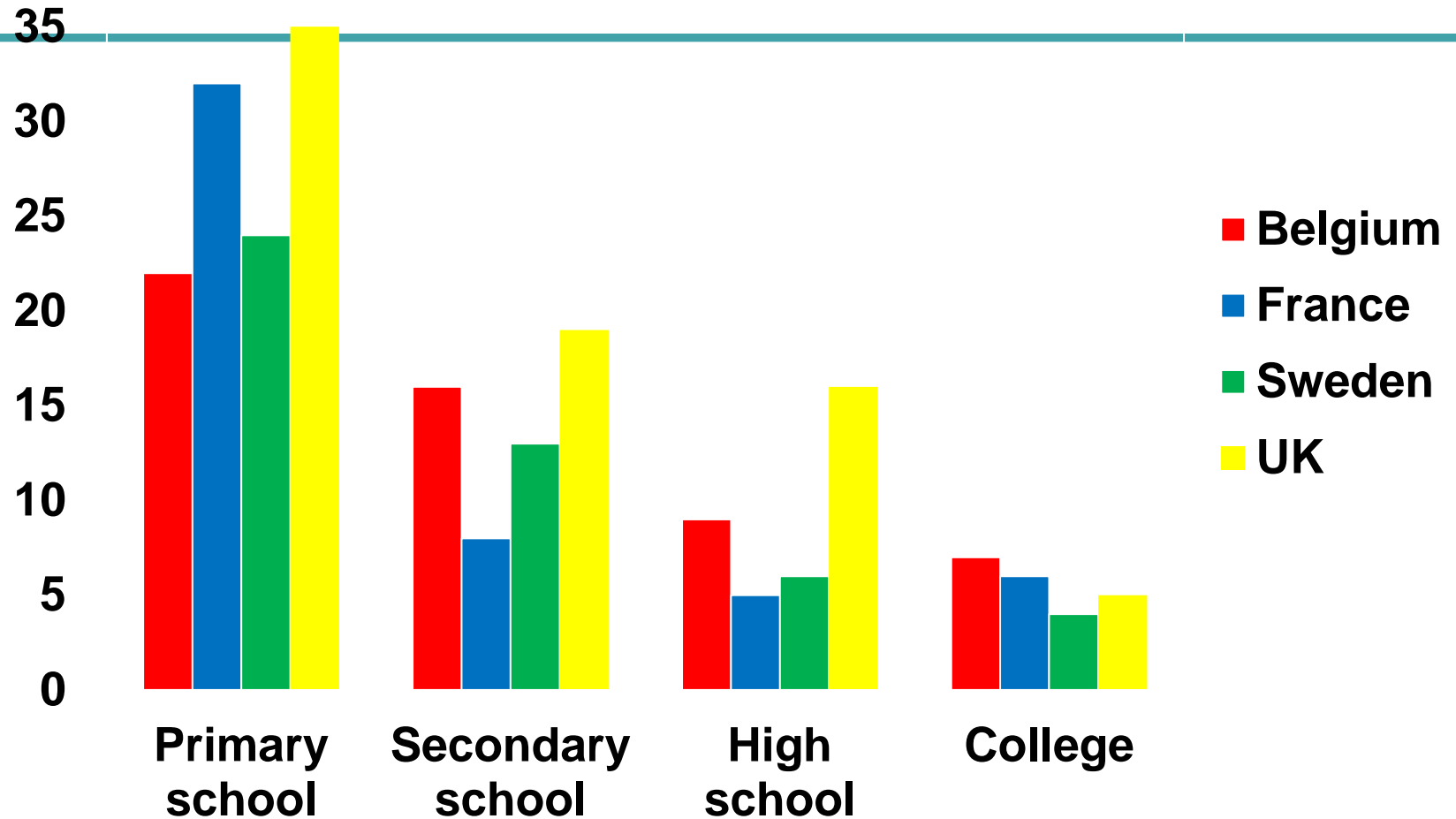


Pitts NB et al., 2000

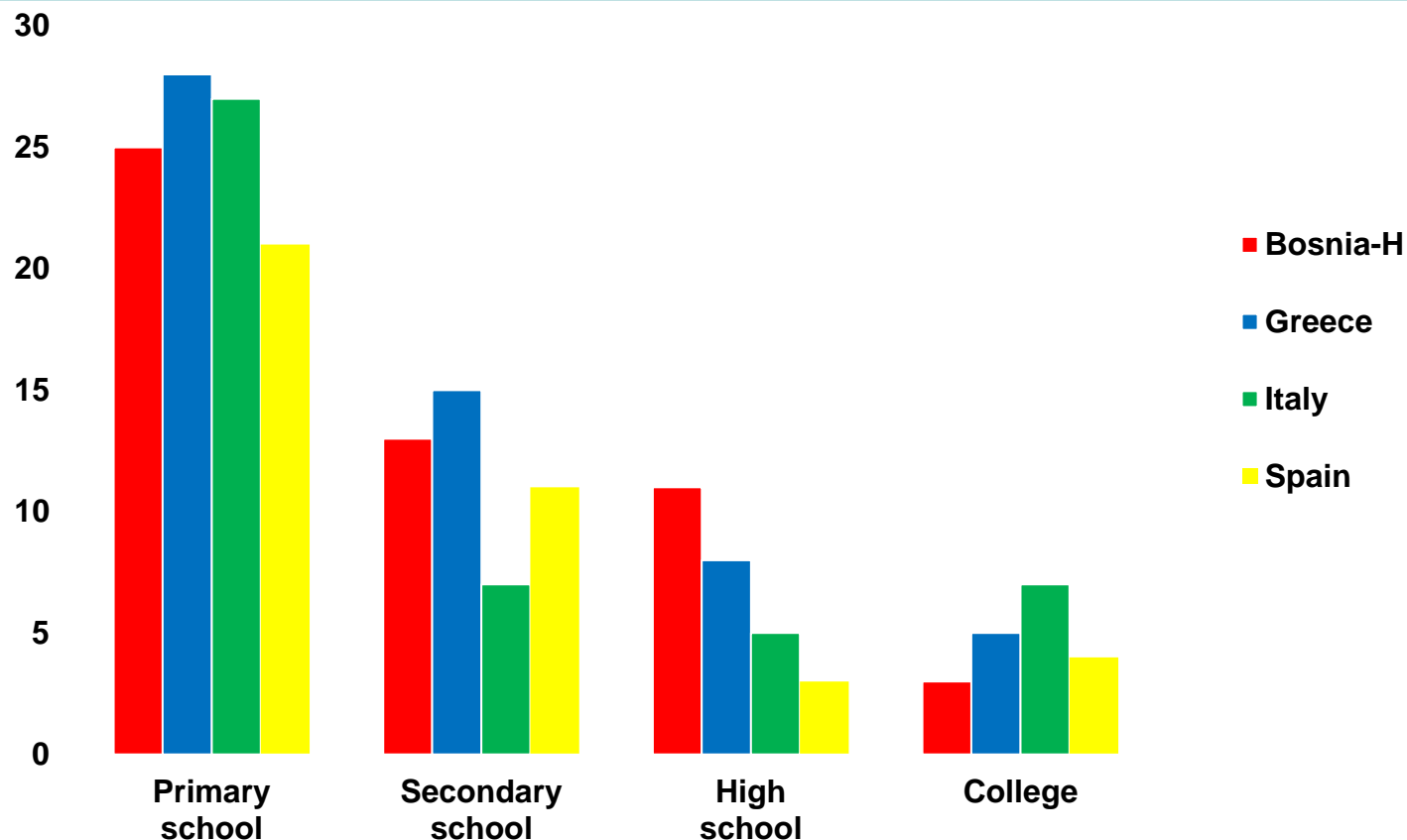
Percentage of people aged 65–74 having lost all natural teeth, western and eastern European countries



Percentage of adults (18 yrs+) having lost all natural teeth, by education, selected countries

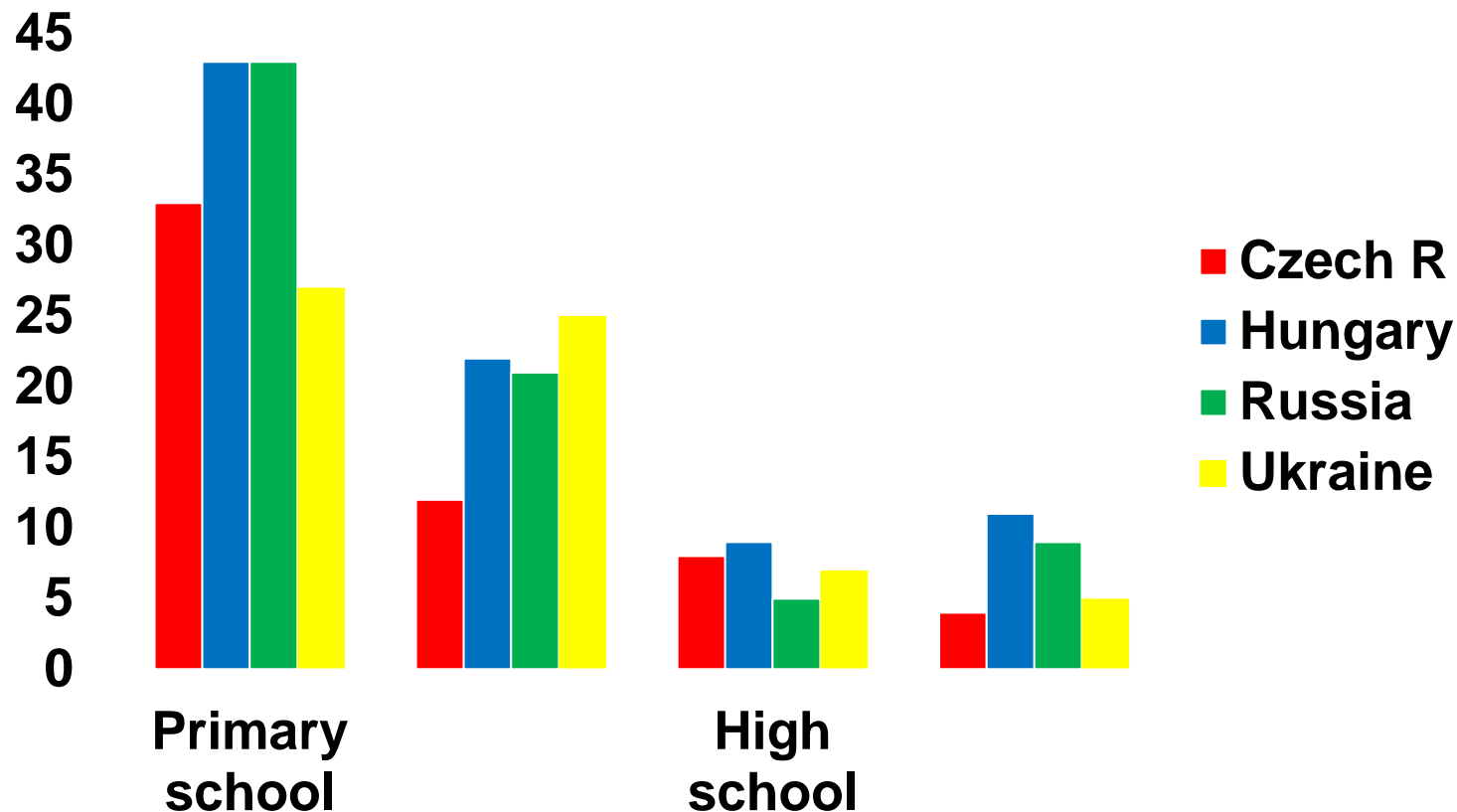


Percentage of adults (18 yrs+) having lost all natural teeth, by education, selected countries



WHS - Petersen and Kwan, 2010

Percentage of adults (18 yrs+) having lost all natural teeth, by education, selected countries



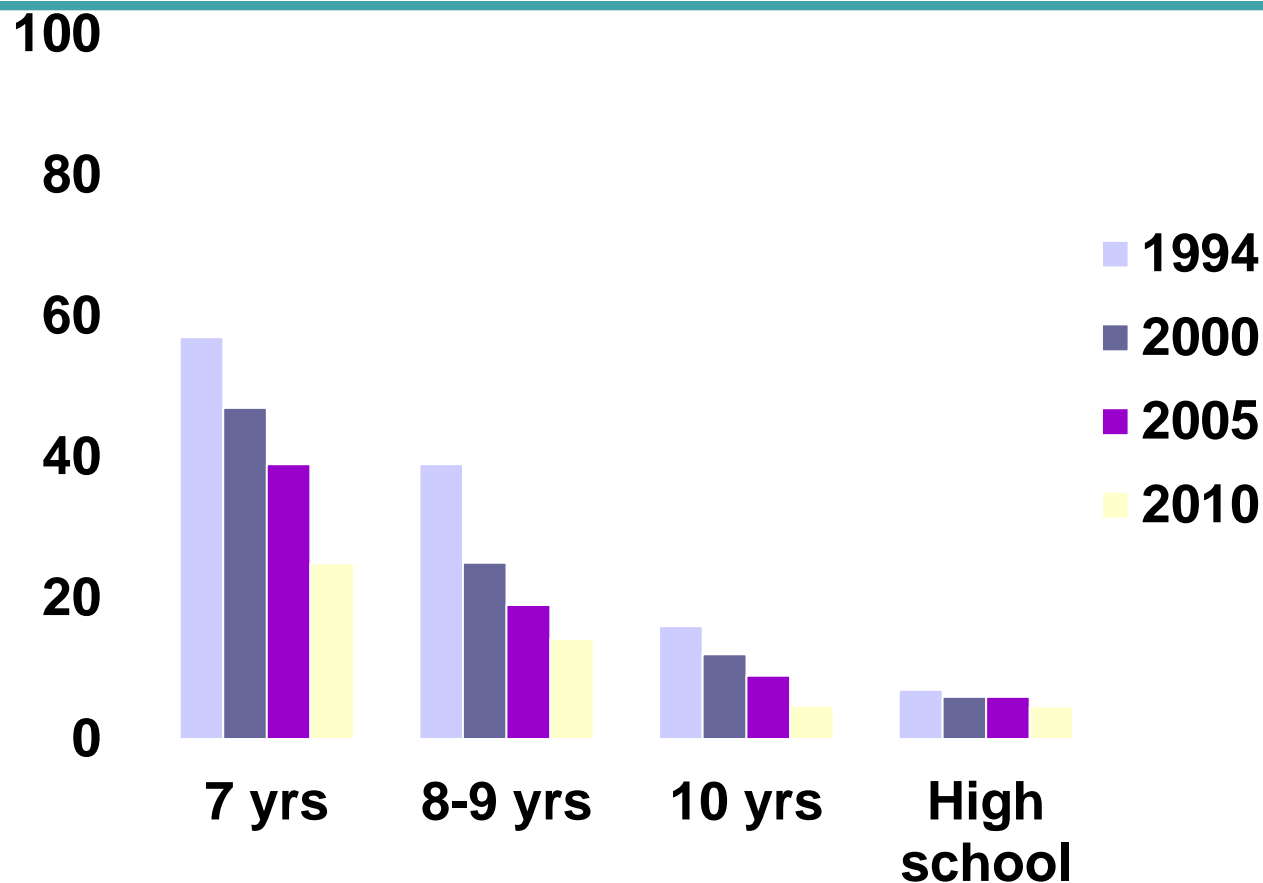
WHS - Petersen and Kwan, 2010



Within-country inequalities in oral health

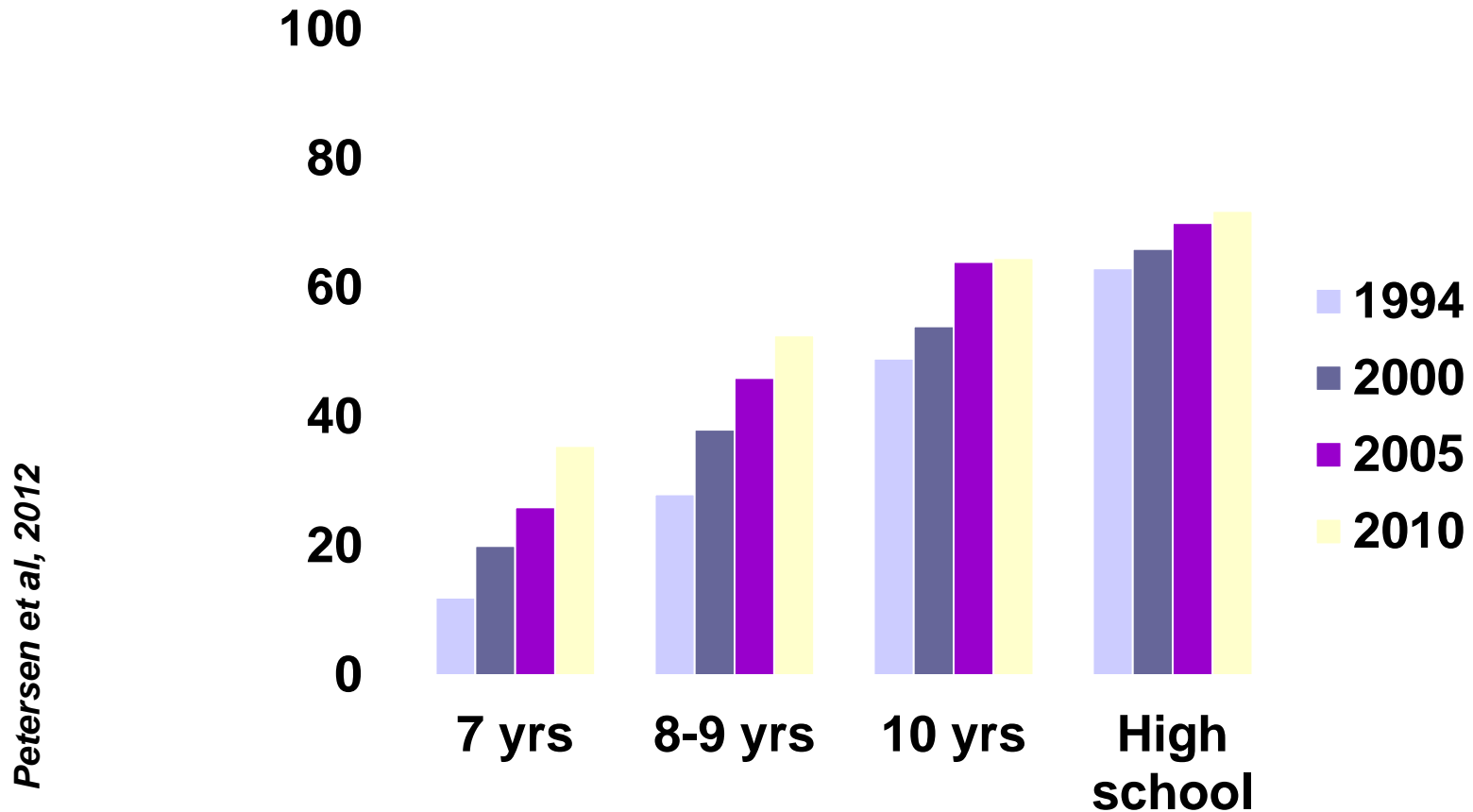
Percentage of Danes aged 65+ years having lost all natural teeth, by years of schooling

Petersen et al, 2012



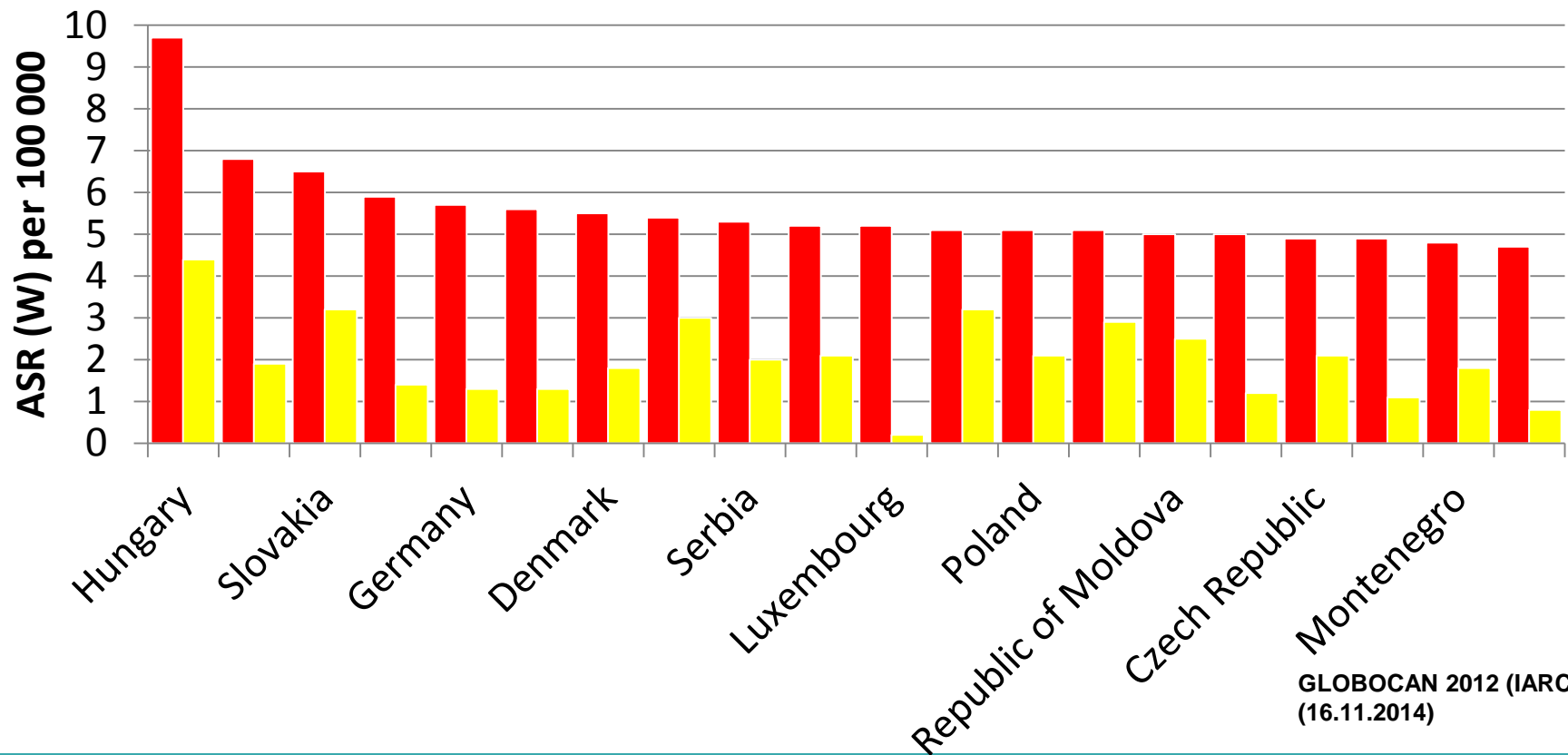
Within-country inequalities in oral health

Percentage of Danes aged 65+ years with 20+ teeth, by years of schooling

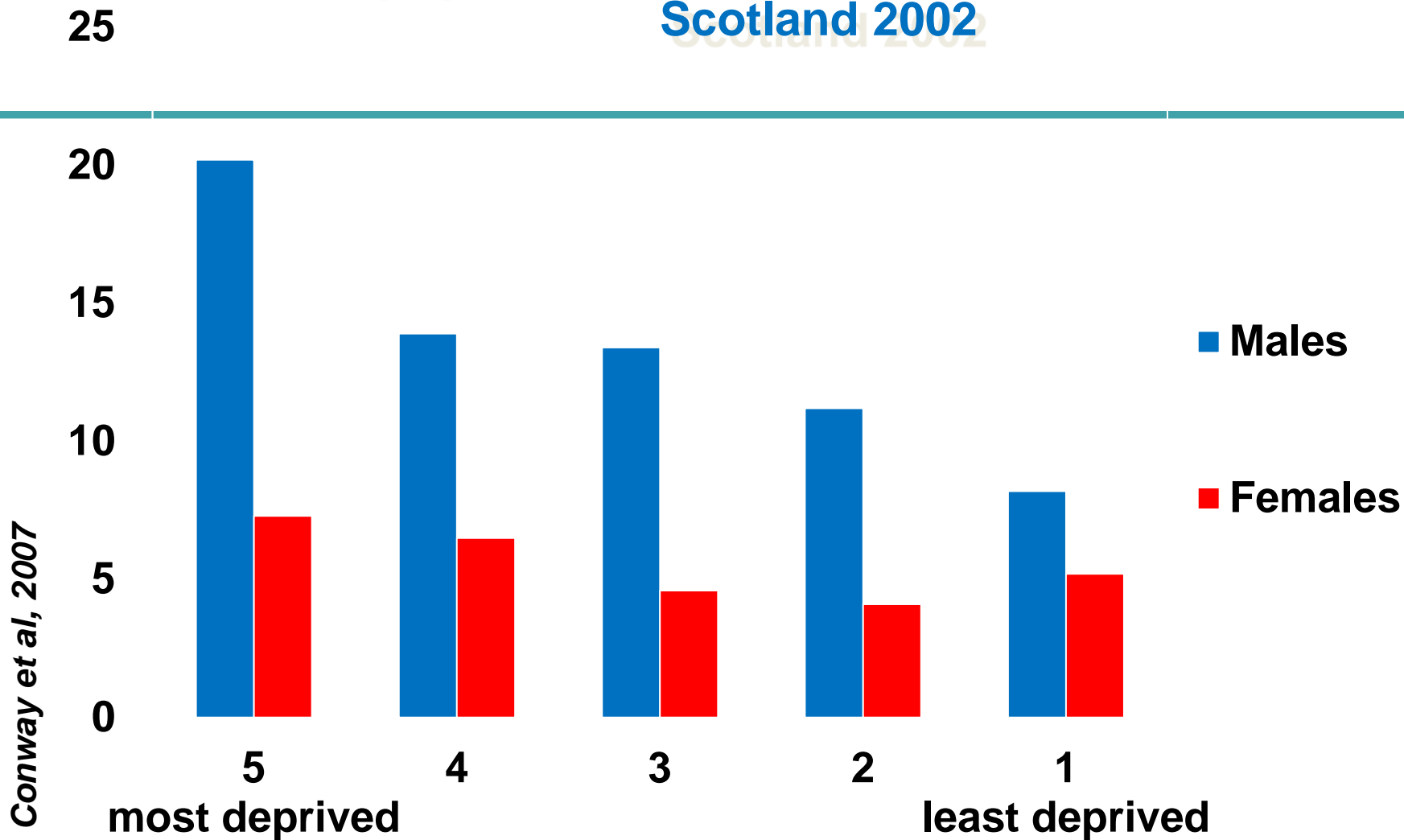




Europe: lip and oral cavity cancer ASR(W), both sexes, all ages



Age-standardized incidence rates (2002) of oral and oropharyngeal cancer, by sex and deprivation score, Scotland 2002

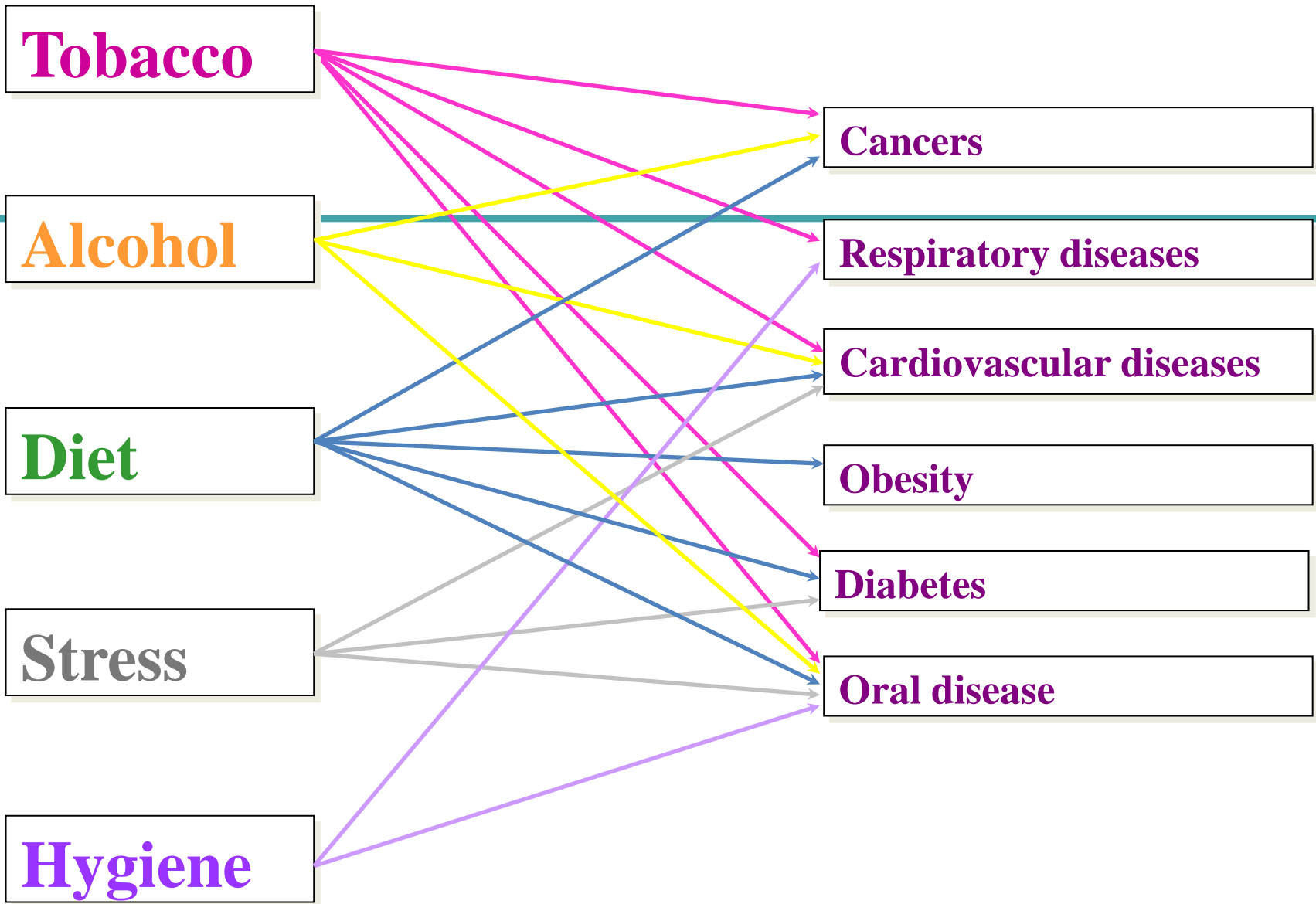




Equity, social determinants and public health programmes



Edited by Erik Blas and Anand Sivasankara Kurup





WHA60.17 (2007)

Oral health – action plan for promotion and integrated disease prevention

Tackling inequities in oral health through:

- shared modifiable risk factors
- chronic diseases
- settings for health
- environment
- health systems
- structural factors of society



Settings for health

- **Health-promoting schools**

*Oral health through schools: children–youth–school
teachers–family–community*

- **Settings for older people**

Age-friendly primary health care and quality of life



Environment for public health

Automatic fluoridation

- *Vehicles are water, salt or milk*
- *Proper oral hygiene and effective use of high-quality fluoridated toothpaste (1000–1500 ppm)*

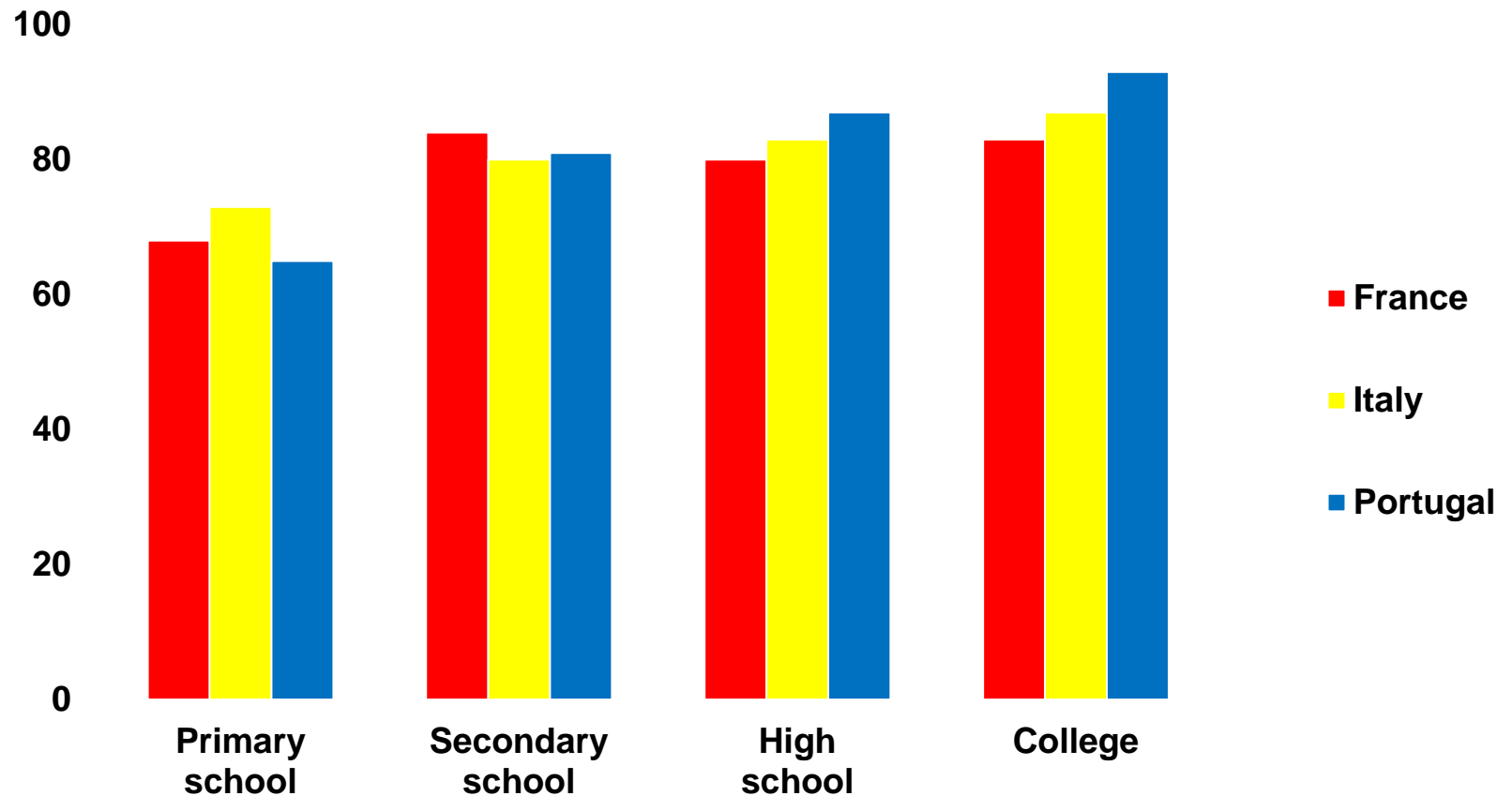


Upstream interventions

- **National policy for oral health**
- **Legalization and regulation**
- **Directives for oral health care**
- **Financially fair primary oral health care**
- **Universal coverage**
- **Integration of oral health with NCD prevention**

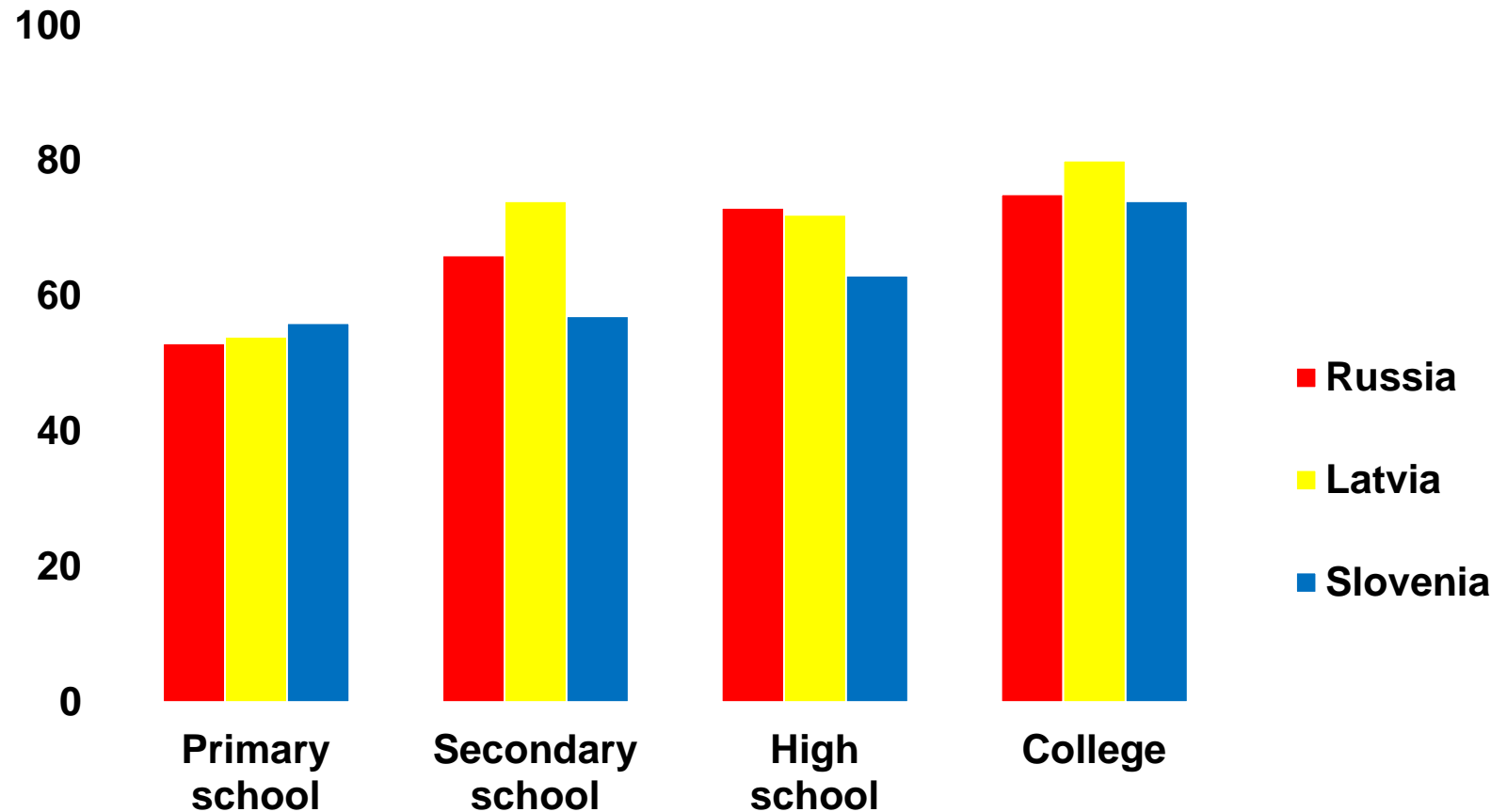


Percentage of adults (18+ years) who have had health care for oral problems, by education, selected countries





Percentage of adults (18+ years) who have had health care for oral problems, by education, selected countries





Universal primary oral health care

- **Oral health care provided by dentists must be financially fair**
- **Health is a public good, guaranteed by government**
- **National health insurance**
- **Dentists must give priority to prevention and health promotion**
- **Outreach to people and communities**



REGIONAL COMMITTEE FOR EUROPE 66TH SESSION

Copenhagen, Denmark, 12–15 September 2016

Action plan for the prevention and control of noncommunicable diseases in the WHO European Region



© Shutterstock.com/Veniva

Working document



Challenges for reducing inequities in health

- **Lack of political interest**
- **Lack of political will**
- **Neglect of health inequities**
- **Blaming the victims**
- **Lack of recognition by private dental practitioners**
- **From ministries of *health care administration* towards ministries of *health***
- **Financially fair oral health care**



Opportunities for equity in oral health

- **Healthy diet and reducing sugars**
- **Tobacco and alcohol control**
- **Organizing public health and primary oral health care**
- **Health care in the workplace**
- **Outreach to people in low-resource settings and disadvantaged groups**
- **Outreach to vulnerable groups, including poor and marginalized groups, homeless people, refugees, disabled people and people living in institutions**
- **Strengthening surveillance**

Thank you!