

Romania

Population: 19 778 084 | Income group: Middle | Gross national income per capita: US\$ 9 470



INSTITUTIONAL FRAMEWORK

Lead agency	Interministerial Council for Road Safety
Funded in national budget	No
National road safety strategy	Yes
Funding to implement strategy	Partially funded
Fatality reduction target	50% (2011-2020)

SAFER ROADS AND MOBILITY

Audits or star rating required for new road infrastructure	Yes
Design standards for the safety of pedestrians / cyclists	Yes
Inspections / star rating of existing roads	Yes
Investments to upgrade high risk locations	No
Policies & investment in urban public transport	Yes

SAFER VEHICLES

Total registered vehicles for 2016	7 014 661
Cars and 4-wheeled light vehicles	5 472 423
Motorized 2- and 3-wheelers	119 534
Heavy trucks	912 790
Buses	48 803
Other	461 111

Vehicle standards applied (UNECE WP.29)

Frontal impact standard	Yes
Electronic stability control	Yes
Pedestrian protection	Yes
Motorcycle anti-lock braking system	Yes

POST-CRASH CARE

National emergency care access number	National, single number
Trauma registry	None
Formal certification for prehospital providers	Yes
National assessment of emergency care systems	Yes

DATA

Reported road traffic fatalities (2016)	1 913 ^a (73% M, 27% F)
Reported rate per 100 000 population (2016)	9.6 ^a
WHO estimated road traffic fatalities (2016)	2 044 ^b
WHO estimated rate per 100 000 population (2016)	10.3 ^b

^a National database (EAC). Died within 30 days of crash

^b WHO's method to obtain comparable country estimates: Group 1. Countries/areas with good death registration data. See explanatory note 3 in *Global status report on road safety 2018* for full details

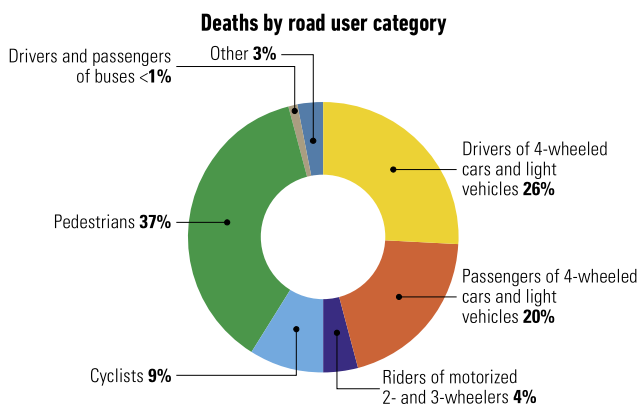
SAFER ROAD USERS

National speed limit law	Yes
Max urban speed limit	50 km/h
Max rural speed limit	90 km/h
Max motorway speed limit	130 km/h
Local authorities can modify limits	Yes
Self-reported enforcement	0 1 2 3 4 5 6 7 8 9 10
Predominant type of enforcement	Manual
National drink-driving law	Yes
BAC limit – general population	≤ 0.08 g/dl
BAC limit – young or novice drivers	≤ 0.08 g/dl
Random breath testing carried out	Yes
Testing carried out in case of fatal crash	All drivers tested
Self-reported enforcement	0 1 2 3 4 5 6 7 8 9 10
% road traffic deaths involving alcohol	6% ^c
National motorcycle helmet law	Yes
Applies to drivers and passengers	Yes
Helmet fastening required	No
Helmet standard referred to and/or specified	No
Children passengers on motorcycles	Prohibited under 14 yrs ^d
Self-reported enforcement	0 1 2 3 4 5 6 7 8 9 10
Helmet wearing rate	–
National seat-belt law	Yes
Applies to front and rear seat occupants	Yes
Self-reported enforcement	0 1 2 3 4 5 6 7 8 9 10
Seat-belt wearing rate	–
National child restraint law	Yes
Children seated in front seat	Allowed in a child restraint ^e
Child restraint required	Up to 135 cm
Child restraint standard referred to and/or specified	Yes
Self-reported enforcement	0 1 2 3 4 5 6 7 8 9 10
% children using child restraints	–
National law on mobile phone use while driving	Yes
Ban on hand-held mobile phone use	Yes
Ban on hands-free mobile phone use	No
National drug-driving law	Yes

^c 2016, National database (EAC)

^d Children under 14 years allowed to be transported in the motorcycle sidecar and must be held in the arms under 7 years

^e If in accordance with the manufacturer's instruction and for rear-facing restraint if airbag is deactivated



Source: 2016, National database (EAC)

Trends in reported road traffic deaths



Source: National database (EAC) and National Institute of Statistics (INS)