

# Serbia

Population: 8 820 083 | Income group: Middle | Gross national income per capita: US\$ 5 280



## INSTITUTIONAL FRAMEWORK

Lead agency	Coordination Body for Road Traffic Safety
Funded in national budget	Yes
National road safety strategy	Yes
Funding to implement strategy	Partially funded
Fatality reduction target	50% (2011-2020)

## SAFER ROADS AND MOBILITY

Audits or star rating required for new road infrastructure	No
Design standards for the safety of pedestrians / cyclists	Yes
Inspections / star rating of existing roads	No
Investments to upgrade high risk locations	Yes
Policies & investment in urban public transport	Yes

## SAFER VEHICLES

Total registered vehicles for 2016	2 282 401
Cars and 4-wheeled light vehicles	1 908 449
Motorized 2- and 3-wheelers	63 587
Heavy trucks	208 925
Buses	9 709
Other	91 731

## Vehicle standards applied (UNECE WP.29)

Frontal impact standard	No
Electronic stability control	No
Pedestrian protection	No
Motorcycle anti-lock braking system	No

## POST-CRASH CARE

National emergency care access number	National, multiple numbers
Trauma registry	Some facilities
Formal certification for prehospital providers	Yes
National assessment of emergency care systems	Yes

## DATA

Reported road traffic fatalities (2016)	607 <sup>a</sup> (82% M, 18% F)
Reported rate per 100 000 population (2016)	8.6 <sup>a</sup>
WHO estimated road traffic fatalities (2016)	649 <sup>b</sup>
WHO estimated rate per 100 000 population (2016)	7.4 <sup>b</sup>

<sup>a</sup> Database of the Ministry of Interior on road traffic accidents. Died within 30 days of crash

<sup>b</sup> WHO's method to obtain comparable country estimates: Group 1. Countries/areas with good death registration data. See explanatory note 3 in *Global status report on road safety 2018* for full details

## SAFER ROAD USERS

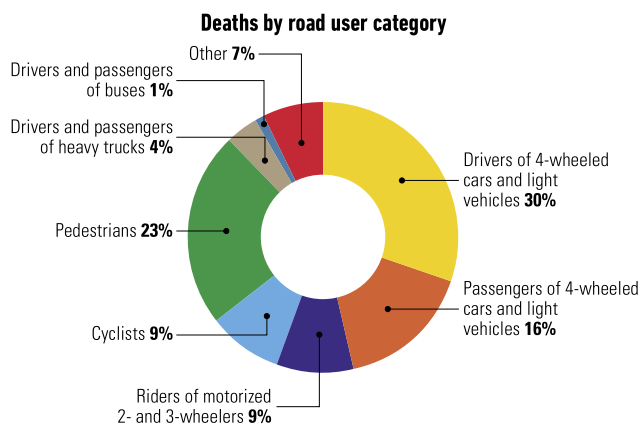
National speed limit law	Yes
Max urban speed limit	50 km/h <sup>c</sup>
Max rural speed limit	100 km/h
Max motorway speed limit	120 km/h
Local authorities can modify limits	Yes
Self-reported enforcement	0 1 2 3 4 5 ⑥ 7 8 9 10
Predominant type of enforcement	Manual
National drink-driving law	Yes
BAC limit – general population	≤ 0.03 g/dl
BAC limit – young or novice drivers	0.00 g/dl
Random breath testing carried out	Yes
Testing carried out in case of fatal crash	All drivers tested
Self-reported enforcement	0 1 2 3 4 ⑤ 6 7 8 9 10
% road traffic deaths involving alcohol	17% <sup>d</sup>
National motorcycle helmet law	Yes
Applies to drivers and passengers	Yes
Helmet fastening required	Yes
Helmet standard referred to and/or specified	No
Children passengers on motorcycles	Prohibited under 12 yrs
Self-reported enforcement	0 1 2 3 4 5 6 7 ⑧ 9 10
Helmet wearing rate	86% Drivers <sup>e</sup> , 74–87% Passengers <sup>e</sup>
National seat-belt law	Yes
Applies to front and rear seat occupants	Yes
Self-reported enforcement	0 1 2 3 4 5 ⑥ 7 8 9 10
Seat-belt wearing rate	75% Front seats <sup>e</sup> , 10% Rear seats <sup>e</sup>
National child restraint law	Yes
Children seated in front seat	Prohibited under 12 yrs <sup>f</sup>
Child restraint required	Up to 3 yrs
Child restraint standard referred to and/or specified	Yes
Self-reported enforcement	0 1 2 ③ 4 5 6 7 8 9 10
% children using child restraints	28% <sup>d</sup>
National law on mobile phone use while driving	Yes
Ban on hand-held mobile phone use	Yes
Ban on hands-free mobile phone use	No
National drug-driving law	Yes

<sup>c</sup> Can be increased to 80 km/h

<sup>d</sup> 2016, Database of the Ministry of Interior on road traffic accidents

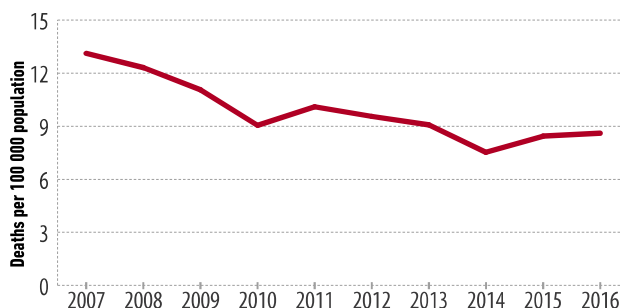
<sup>e</sup> 2016, Road Traffic Safety Agency of Republic of Serbia (percentages for helmet wearing are for mopeds and motorcycles, respectively)

<sup>f</sup> Except for children under 3 years if airbag is deactivated



Source: 2016, Database of the Ministry of Interior on road traffic accidents

## Trends in reported road traffic deaths



Source: Statistical Office of the Republic of Serbia and Database of the Ministry of Interior on road traffic accidents