



WHO GPW13 Impact Measurement

EURO Regional Committee Meeting

- The Seventy-second World Health Assembly (WHA72) requested the Director-General to continue developing the **Results Framework of GPW 13, 2019–2023**, in consultation with the **Member States and through regional committees**
- Consultations on the WHO GPW 13 Impact Framework prior to WHA72:
 - Online consultations and feedback
 - Geneva missions briefings
 - EB and WHA sessions

Objective

Provide **progress to date** on the development of the measurement of the GPW 13 Results Framework

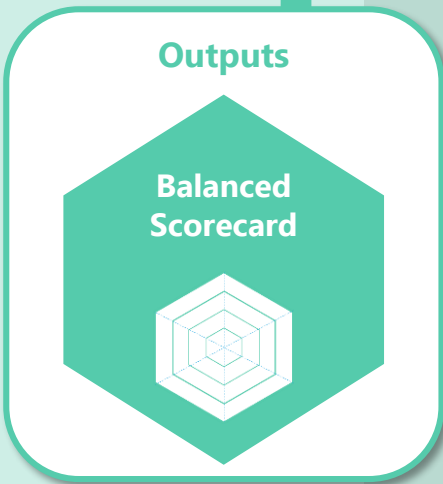
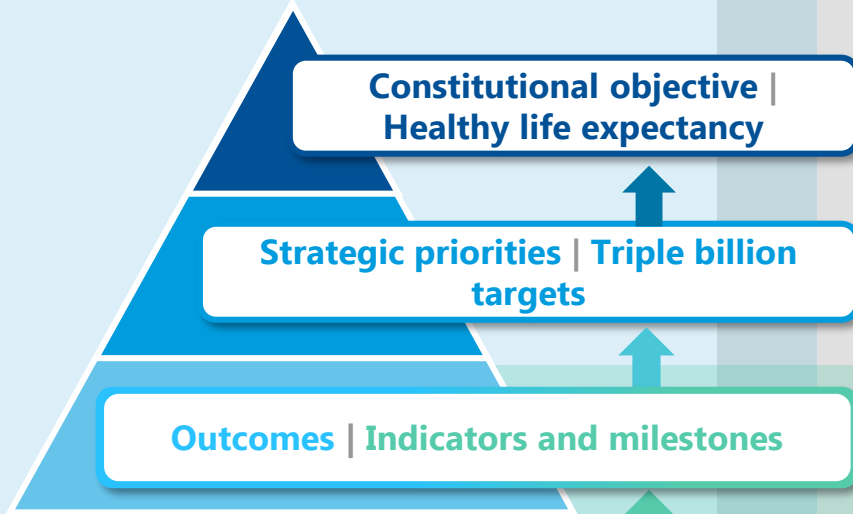
Invite **valuable inputs** from Member States to finalize the Framework and obtain joint commitment for its implementation



Measuring the GPW 13 Results Framework



GPW 13 impact measurement

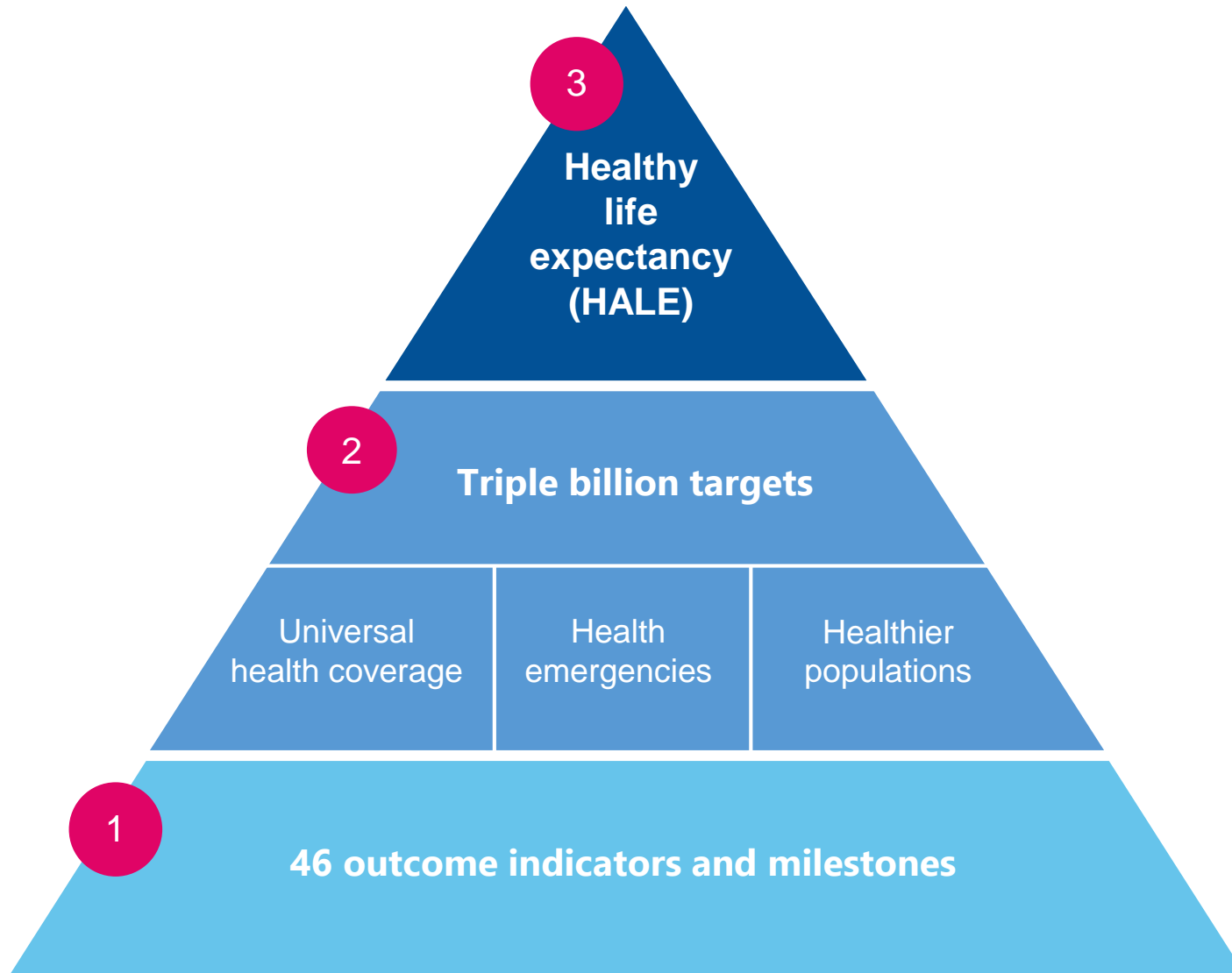


Programme budget

Country case studies

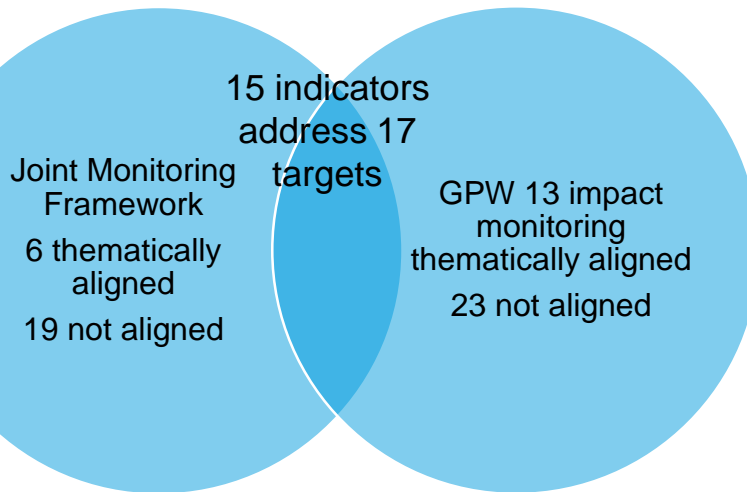


WHO impact measurement: progress



Indicator Alignment: EURO Joint Monitoring Framework and GPW 13 Impact Monitoring

All six themes are in complete alignment



Domain	Category	Indicator	Thematic
Mortality and health expectancy	Premature mortality from NCDs Maternal mortality	1	
		1	
Health behaviors and risk factors	Physical activity Nutrition Overweight and obesity Alcohol Smoking	1	
		1	
		1	
		1	
		1	
Morbidity – NCDs and communicable diseases	Tuberculosis Vaccination Hepatitis B HIV Cancer	1	2
			1
		1	
Health systems	Health Expenditure Health worker density	1	2
		1	
Environmental health	Sanitation Air quality	1	
			1
Health policy	International Health Regulations	1	

Consultative process: Next steps

01

Consultation and inputs from Member States on the Results Framework during the regional committees Aug-Oct 2019

02

Technical experts meeting to review the WHO impact measurement methodologies 17-18 Oct 2019

03

Establish baselines and milestones for the outcome indicators Oct-Nov 2019

04

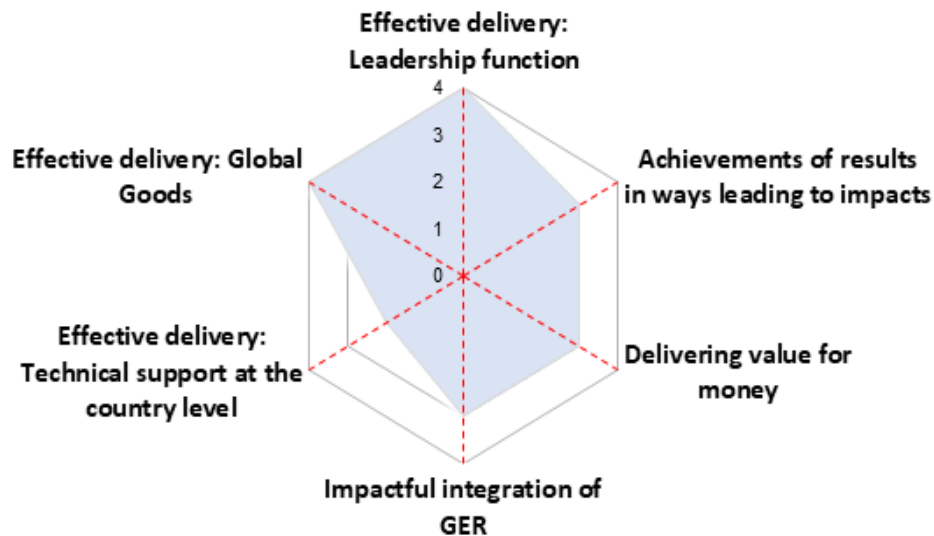
Informal Member State consultation on GPW 13 Results Framework to update on progress and present the draft 04 Nov 2019

05

Report to the Executive Board at its 146th session Feb 2020 and present at WHA in May 2020

Output scorecard

WHO's performance on the outputs will be summarized by a balanced scorecard that shows aggregated scores for each of the six dimensions



Assessment rating based on similar scale

Scale	Score
Strong	4
Satisfactory	3
Weak	2
Unsatisfactory	1

How?

- Self-assessment
- Guided by objective criteria
- Internal validation mechanism, e.g. for VfM and GER dimensions

Steps taken immediately after WHA

- Pilot testing of approach
- Internal consultations across three levels of the Organization (CO, RO, HQ)
- Further refinements on the attributes, criteria by external and internal experts through workshops

Further steps planned

- Testing the refinements at RO, CO
- Testing globally through output networks
- Final draft of measurement instrument, including leading indicators for dimension 6
- Briefings with Member States
- Finalize detailed output scorecard paper the Executive Board 2019
- Development of tool

Output measurement – dimensions & attributes*

Unpacking the dimensions into attributes

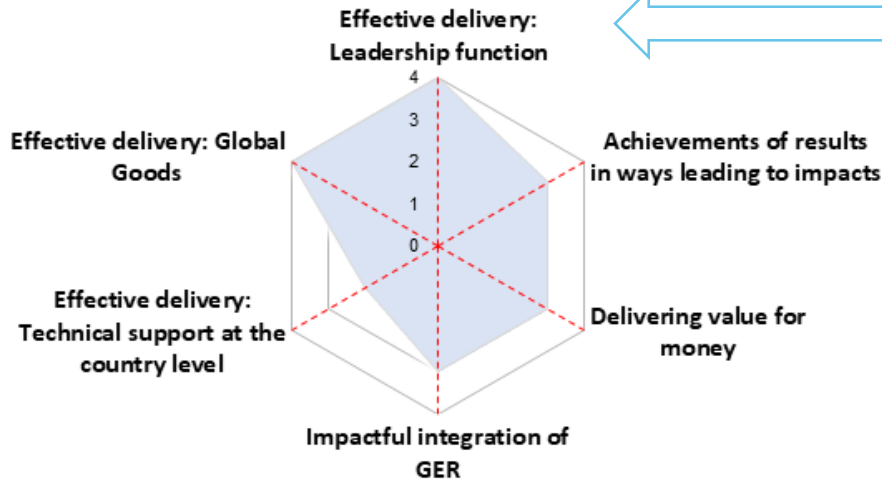
Dimension	A	1. Effective Leadership
Attributes	1	Authoritative advice Deliver authoritative and influential advice to world leaders that drives thinking on key public health risks and priorities
Strapline	2	Convening Convene world experts to anticipate and address the key public health risks and challenges
	3	Negotiating and finding solutions Negotiate innovative solutions with Member States and public and private partners to address politically sensitive issues
	4	Driving the agenda (<i>keeping health on the radar</i>) Drive health issues up the political agenda through impactful communication and advocacy
	5	Mobilizing and aligning resources Ensure human and financial resources are aligned and mobilized with strategic priorities and deliverables

Output measurement | A Balanced scorecard approach

* Attributes are constructed to provide key areas of focus in each Dimension to improve consistency (for example, this is what is meant by Effective Leadership).

EXAMPLE

OUTPUT 1.1.5



FOCUS ON LEADERSHIP DIMENSION FOR ILLUSTRATION

		Scoring
		Output 1.1.5
Areas of performance	Dimension: i.e Leadership (Average of below scores)	Average of attribute score Score= 4 Average (Attribute 4+Attribute 3+Attribute 4 +etc.)
	Attribute (Scoring level)	Scoring of Attribute Attribute 1: Score 4 Attribute 2: Score 3 Attribute 3: Score 4
	Criteria (References for scoring)	Reference for scoring Criteria 1: no scoring, presented as a checklist Criteria 2: no scoring, presented as a checklist Criteria 3: no scoring, presented as a checklist

Refinements made so far

Further refinement of methods (by external and internal experts)

- Agreement on the level which will be scored (attribute)
- Agreement on how the attributes will be scored (non-binary; guided by criteria)
- Draft criteria for each attribute and the approach to measuring them
- Refinements of measurement instrument for leaving no one behind dimension (GER), value for money and results dimension

Further refinements underway

Finalization of the detailed methodology document:

- Attributes, criteria for each of the dimensions including for the outputs under outcome 4.2. (Leadership and Governance) and 4.3. (Management and Admin)
- Leading indicators for Dimension 6; finalization of attributes and criteria for 4.2 and 4.3 outputs
- Measurement instrument with guide (including checklists)

THANK YOU FOR YOUR ATTENTION!



Country experiences and success stories highlighting achievements, successful interventions and lessons learned.

WHO country offices in action: implementation of the SDGs in Bulgaria



WHO facilitated policy dialogue to discuss implementation of the Bulgarian National Health Strategy 2020 geared towards achieving the WHO Policy Framework for Health and Wellbeing in support of the SDG Agenda. Stakeholders at the workshop developed a framework for achieving the SDGs in Bulgaria through multisectoral collaboration and active engagement.

In the programme area of national health policies (NHP), the Bilateral Cooperation Agreement (2018-2019) sets out the key dimensions of WHO's support for improved country governance capacity to formulate, implement and review national health policies; promote and strengthen health information and data analysis and information sharing; and strengthen national capacity in knowledge translation and use of evidence in policy-making.

At the request of the Ministry of Health, the WHO Regional Office for Europe through the WHO Country Office in Bulgaria provided technical assistance aimed at increasing technical capacity for policy review through training on mapping of evidence that will inform the upcoming NHS2020 review. Beyond the developed and tailor-made methodology for mapping of evidence, an online tool in the national language was developed to improve outreach in the evidence gathering process.

Support was also provided in the form of expert advice for the process of mapping evidence of NHS2020 implementation which is conducted by the national technical group. This advice was to ensure appropriate use of methodology and the usefulness of the mapping of evidence report.

TAJIKISTAN

European Region

HEALTH INFORMATION SYSTEMS



Challenge:
Improving evidence-based policy making

Action:
training 100 employees of the Agency of Statistics in health services data collection

Outcome:
building capacity to investigate equity and poverty dimensions in health



Recognizing that the collection of accurate and up-to-date data is crucial for evidence-based policy-making to achieve universal health coverage, WHO provided support to the Agency for Statistics under the President of the Republic of Tajikistan to gather reliable data on key areas such as health services utilization, unmet need and financial burden. The work was focused on updating a health module of the Household Budget Survey (HBS) and providing in-depth training for over 100 survey interviewers from the Agency for Statistics.

The training series was in July 2018 and focused on building the capacity of interviewers, at both national and regional levels, to collect data on health services utilization and household expenditures within the scope of the routinely conducted HBS. During the training, interviewers were given guidance on processing data from the questionnaires and on fieldwork using the computer-assisted personal interviewing (CAPI) application.

Including the revised health module questionnaire with the regular HBS makes it possible to link utilization and health expenditure data to detailed information on household consumption, including costs associated with disability. This data helped in strengthening analysis on equity and poverty dimensions, and the relevant financial protection aspects per household. It has also allowed for the calculation of the burden of health-care expenditures and the estimation of the impact

As per proposed programme budget 2020-2021 Outcome 4.1

1

Strengthened country data information systems for health

Support countries to use of data, including World Health Data Collection Platform, to drive policies, impact and deliver the triple billion targets



2

Monitor global health trends

Provide reliable and actionable data to monitor global, regional and national health trends, SDGs, GPW13, and health inequalities

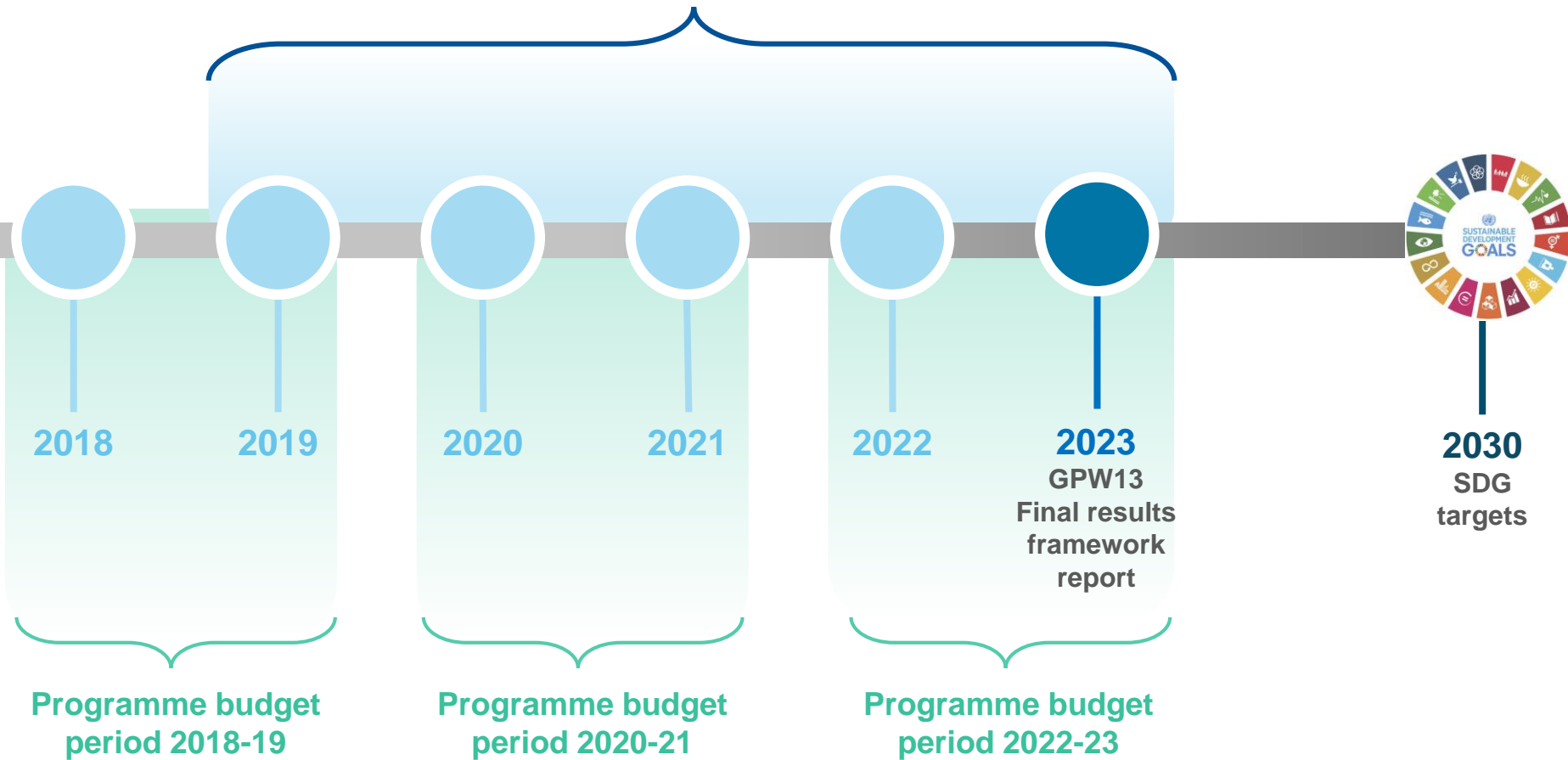
3

Strengthen and scale up research and innovations

Strengthen evidence base, prioritize WHO's norms and standards, and improve research capacity, and scale up innovations in countries in alignment with GPW13 and country priorities

Reporting schedule

Annual reporting



All references can be accessed at: <https://www.who.int/about/what-we-do/thirteenth-general-programme-of-work-2019-2023/>

[GPW13 Results Framework: An update](#)

[72nd World Health Assembly agenda item 11.1 \(9 May 2019\)](#)

[Proposed Programme Budget WHO Impact Framework \(WHA72.5\)](#)

[GPW13 Milestones and Indicators: Mapping SDGs to GPW13](#)

[GPW13 Milestones and Indicators: Metadata](#)

GPW13 Milestones and Indicators: Database (<http://bit.ly/gpw13-data>)

GPW13 Methods Report - Draft (*Forthcoming*)