

Best viewed using Chrome, Safari or Internet Explorer 9 or higher. If you are having trouble viewing this page please click here for the alternative viewer.

Key points

Week 32/2020 (3 - 9 Aug 2020)

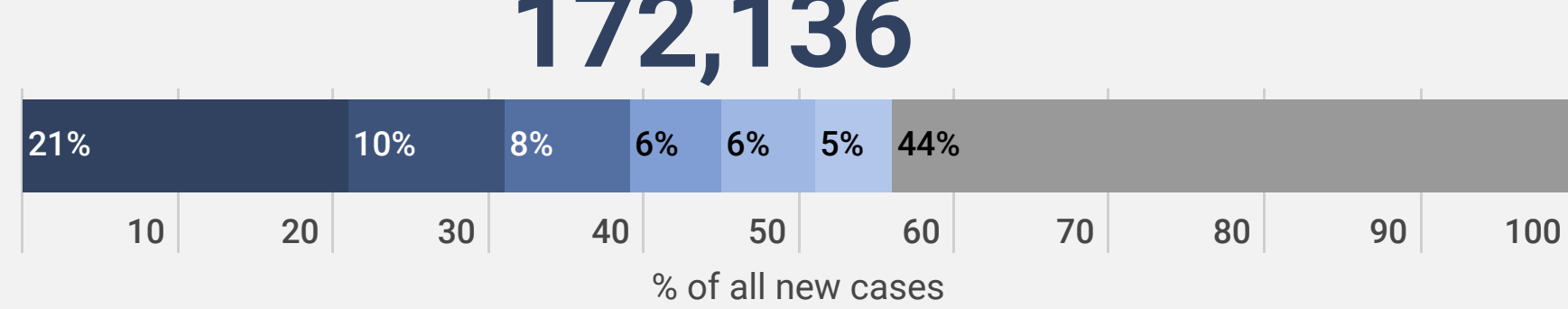
- The number of cases and deaths reported in the Region in the week 32/2020 remained stable compared to the previous week (Figure 1)
- 50% (95,851) of the cases reported in week 32/2020 were reported from six countries: the Russian Federation (21%; 36,666), Spain (10%; 17,241), Kazakhstan (8%; 13,181), France (6%; 10,002), Israel (6%, 9,980) and Ukraine (5%, 8,781). The remaining cases (44%; 76,285) were reported by 51 countries and territories; each accounted for <5% of the total cases reported in week 32/2020
- Five countries had a crude incidence of ≥ 60 per 100,000 in week 32/2020: Israel, Kazakhstan, Luxembourg, Montenegro and Bosnia and Herzegovina. The crude incidence continues to vary across the region with a range from 1.2 per 100,000 population in Georgia to 117.1 per 100,000 population in Israel (Figure 2A)
- The 14-day cumulative incidence increased by $\geq 10\%$ in week 32/2020 in 35 countries and territories in the Region, however for some countries data was retro-adjusted by national authorities: Albania, Belgium, Bosnia and Herzegovina, Cyprus, Czech Republic, Denmark, Estonia, Finland, France, Germany, Greece, Hungary, Iceland, Ireland, Italy, Kazakhstan, Latvia, Lithuania, Malta, Netherlands, Norway, Poland, Republic of Moldova, Romania, Slovakia, Spain, Switzerland, Turkey, Ukraine, the United Kingdom and Uzbekistan (see [EURO COVID-19 Dashboard](#) for recent trends)
- 59% (1,628) of the deaths reported in week 32/2020 were reported by the Russian Federation (29%; 803), the United Kingdom (13%; 373), Romania (10%; 280) and Ukraine (6%, 172). The remaining deaths (41%; 1,154) were reported from 38 countries and territories; each accounted for <5% of the total deaths reported in week 32/2020
- The proportion of reported cases that died was 1.6% in week 32/2020
- Community-transmission was reported by 26 countries and territories, 27 countries and territories reported cluster transmission, while 5 countries and territories reported sporadic transmission in week 32/2020 (see [EURO COVID-19 Dashboard](#))
- Since the emergence of COVID-19 virus in Europe at the end of February 2020, a wide range of public health and social measures (PHSM) have been implemented. See [EURO COVID-19 Dashboard \(NPI Explorer\)](#) for a snapshot of the temporal relationship between case and death numbers and the introduction and easing of these measures in some countries in the Region. In response to an increase in cases, some countries have recently started reintroducing PHSM.

Summary overview

- The cumulative cases across the Region increased 5.1% to 3,579,786 cases in week 32/2020 (from 3,407,650 cases in week 31/2020) and cumulative deaths increased by 1.3% to 216,563 deaths (from 213,781 deaths in week 31/2020)
- As of 11 July 2020, nine countries in the European region had an effective reproductive number significantly over 1: Bosnia and Herzegovina, Czech Republic, France, Israel, Kazakhstan, Kyrgyzstan, Luxembourg, Serbia and Switzerland (See [EpiForecasts](#) and the [CMMID COVID working group COVID-19 Global Summary](#) for latest estimates)
- Seven countries in the Region each reported a cumulative incidence of ≥ 700 cases per 100,000 population: Andorra, Armenia, Belarus, Israel, Luxembourg, San Marino and Sweden (Figure 2B)
- As of week 32/2020, 67% (2,415,198) of cumulative cases were reported from the Russian Federation (25%; 887,536), Spain (9%, 314,362), the United Kingdom (9%; 309,763), Italy (7%; 250,103), Turkey (7%; 239,622), Germany (6%; 215,891) and France (6%; 197,921). The remaining cases (33%; 1,164,588) were reported by 54 countries and territories; each accounted for <5% of the total cases reported until week 32/2020
- As of week 32/2020, 72% of cumulative deaths (155,527) were reported from the United Kingdom (22%; 46,566), Italy (16%; 35,203), France (14%; 30,324), Spain (13%; 28,503) and the Russian Federation (7%; 14,931). The remaining deaths (28%; 61,036) were reported by 52 countries and territories; each accounted for <5% of the total cases reported until week 32/2020
- 89% of all deaths were in persons aged ≥ 65 years and 58% of all deaths were in men
- 95% of all deaths with information available had at least one underlying condition, with cardiovascular disease the leading comorbidity (75%)
- 14% of cases were in persons aged ≥ 65 years in week 32/2020, a decrease from 38% in week 14/2020, while the percentage of fatal cases aged ≥ 65 years was 66% in week 32/2020 (compared to 91% in week 14/2020) (Figure 3)
- Following a period of a very substantial excess mortality observed in some countries coinciding with the COVID-19 pandemic, pooled estimates of all-cause mortality for the countries in the [EuroMOMO](#) network have now returned to normal levels. In some countries there might be a tendency towards an increase in mortality, possibly due to heat waves
- In week 32/2020, four countries reported 87 tests and 2 SARS-CoV-2 detection in persons with influenza-like illness in primary care sentinel surveillance. The updated positivity rate in this surveillance system week 31/2020 was 2.2% (7 countries) compared to 1.3% (7 countries) in week 30/2020. The highest positivity in the sentinel surveillance was 14.6%, seen in week 15/2020 (Figure 4)
- Overall, there were 62,612 (5%) COVID-19 cases among the total of 1,250,682 tests performed in 19 countries for week 32/2020 (Figure 5)

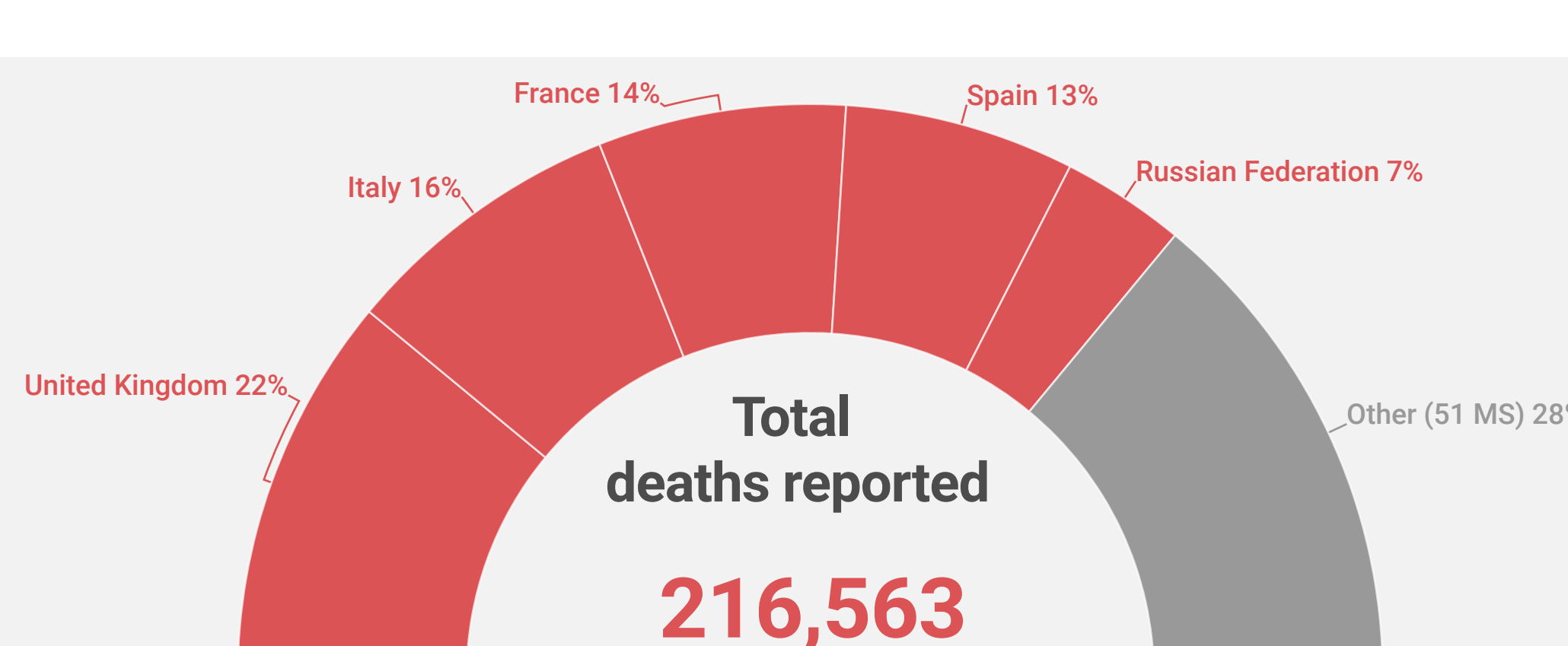
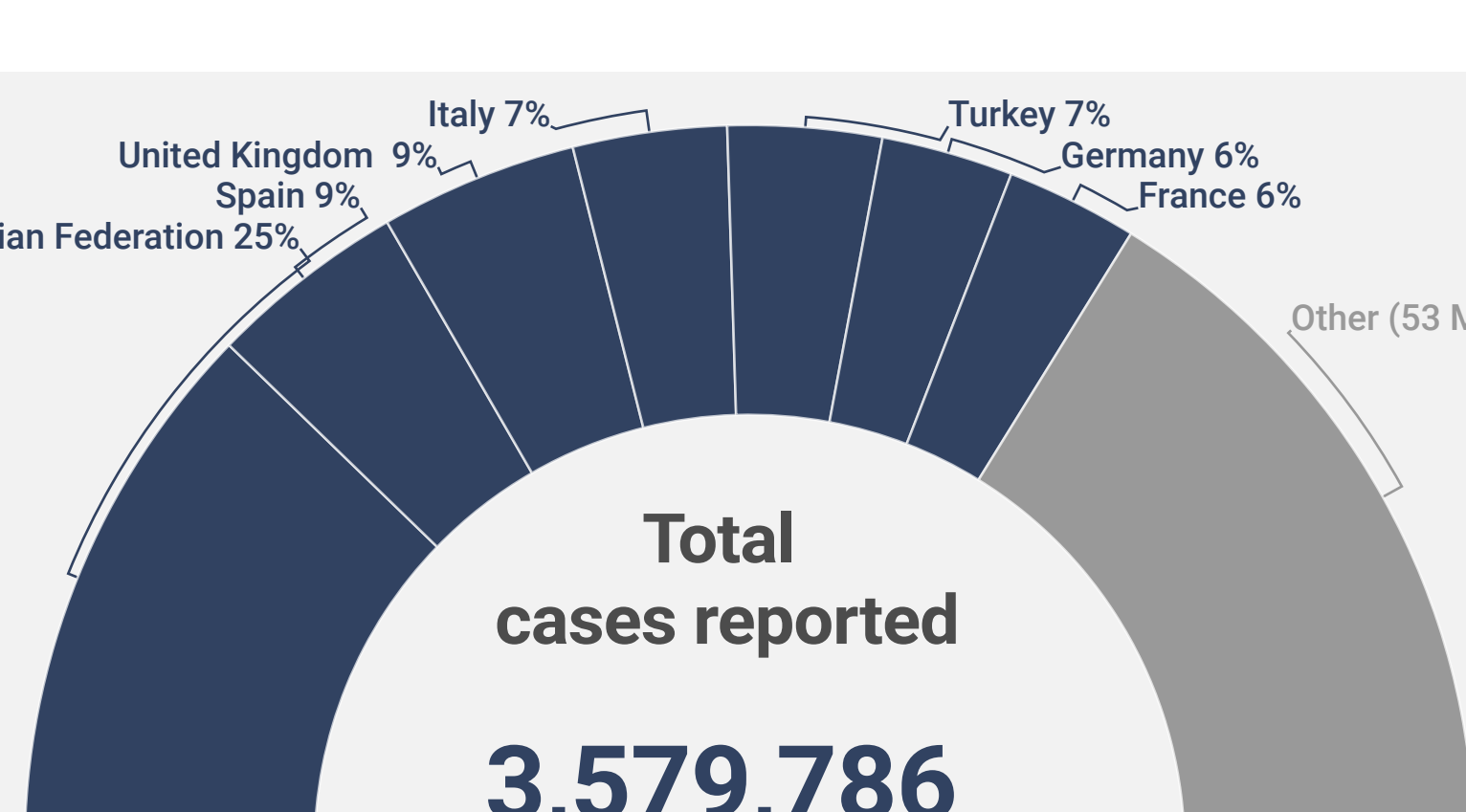
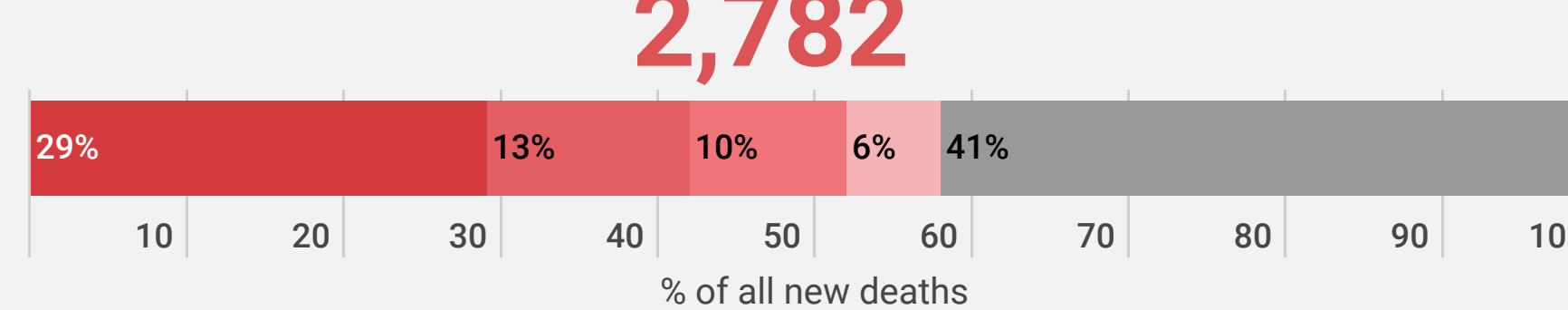
New cases (week 32/2020)

172,136



New deaths (week 32/2020)

2,782



89% of deaths were in persons aged ≥ 65

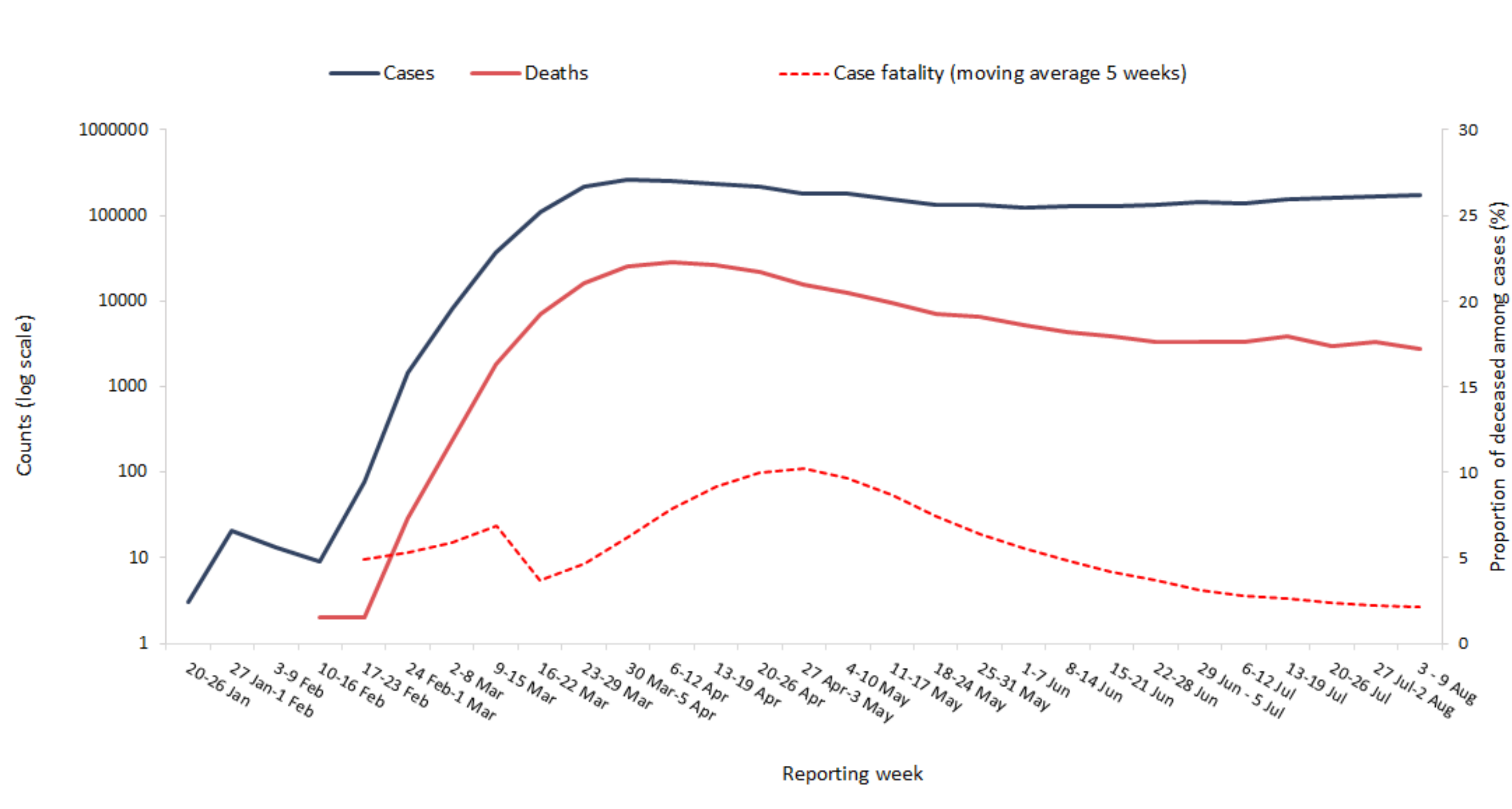
58% of deaths were in men

95% of deaths had at least 1 underlying condition

75% of deaths had cardiovascular disease

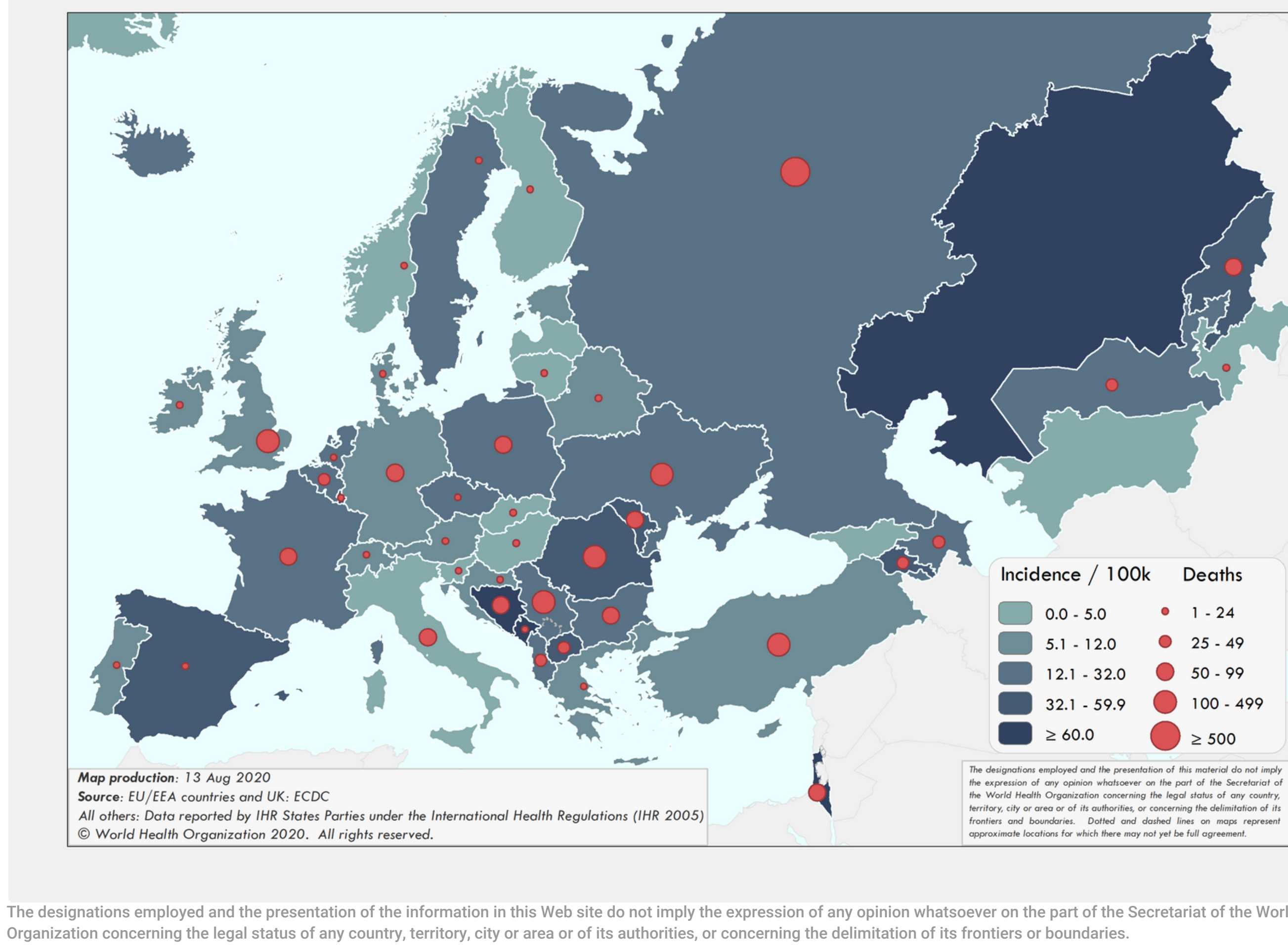
For more detailed information see: [WHO Global situation reports](#) [WHO Global situation dashboard](#)

Figure 1: Number of COVID-19 cases (N=3,579,786) and deaths (N=216,563) by reporting week



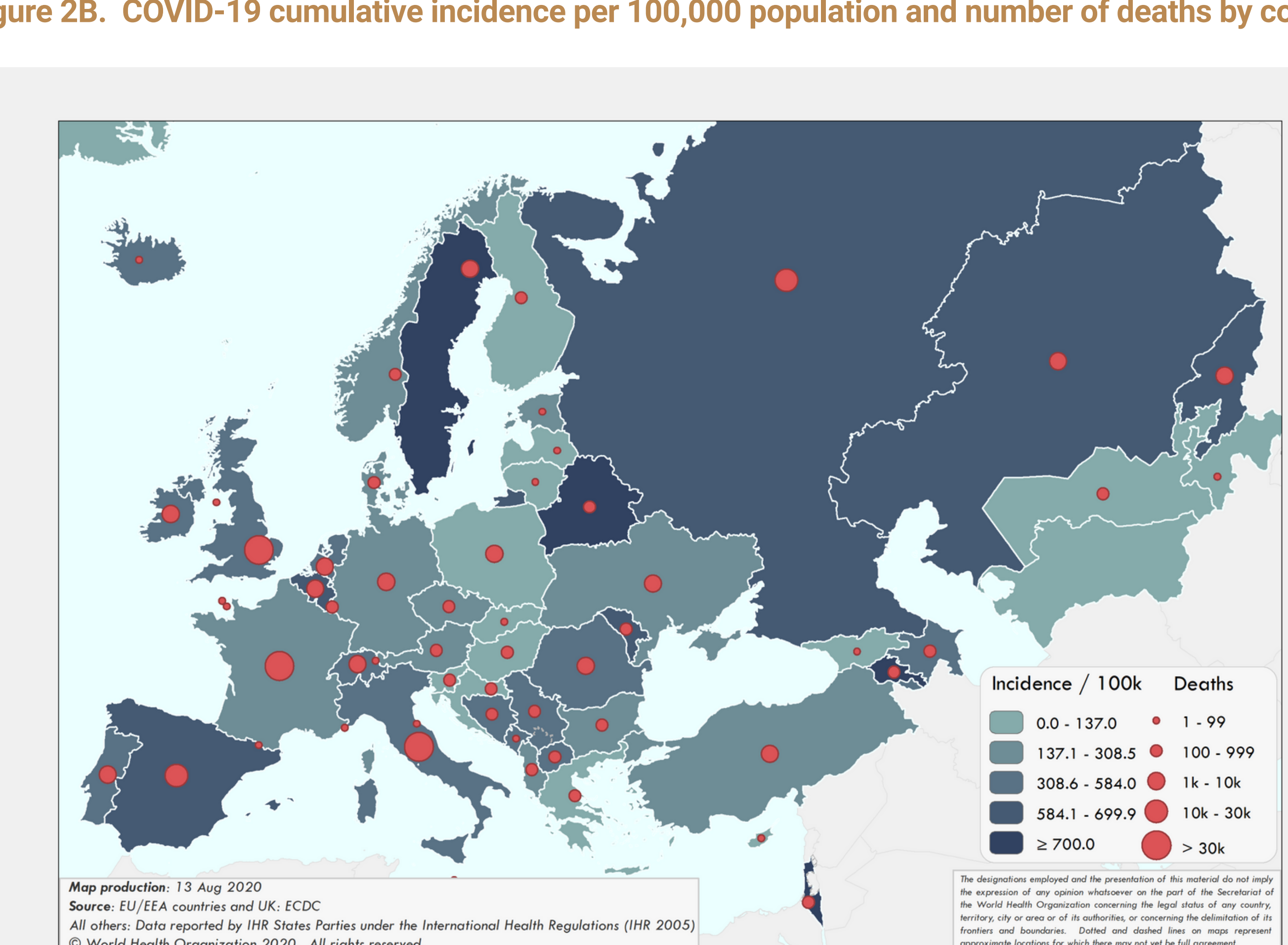
Source: IHR reports

Figure 2A. COVID-19 incidence per 100,000 population and number of deaths by country for week 32



The designations employed and the presentation of the information in this Web site do not imply the expression of any opinion whatsoever on the part of the Secretariat of the World Health Organization concerning the legal status of any country, territory, city or area or of its authorities, or concerning the delimitation of its frontiers or boundaries.

Figure 2B. COVID-19 cumulative incidence per 100,000 population and number of deaths by country



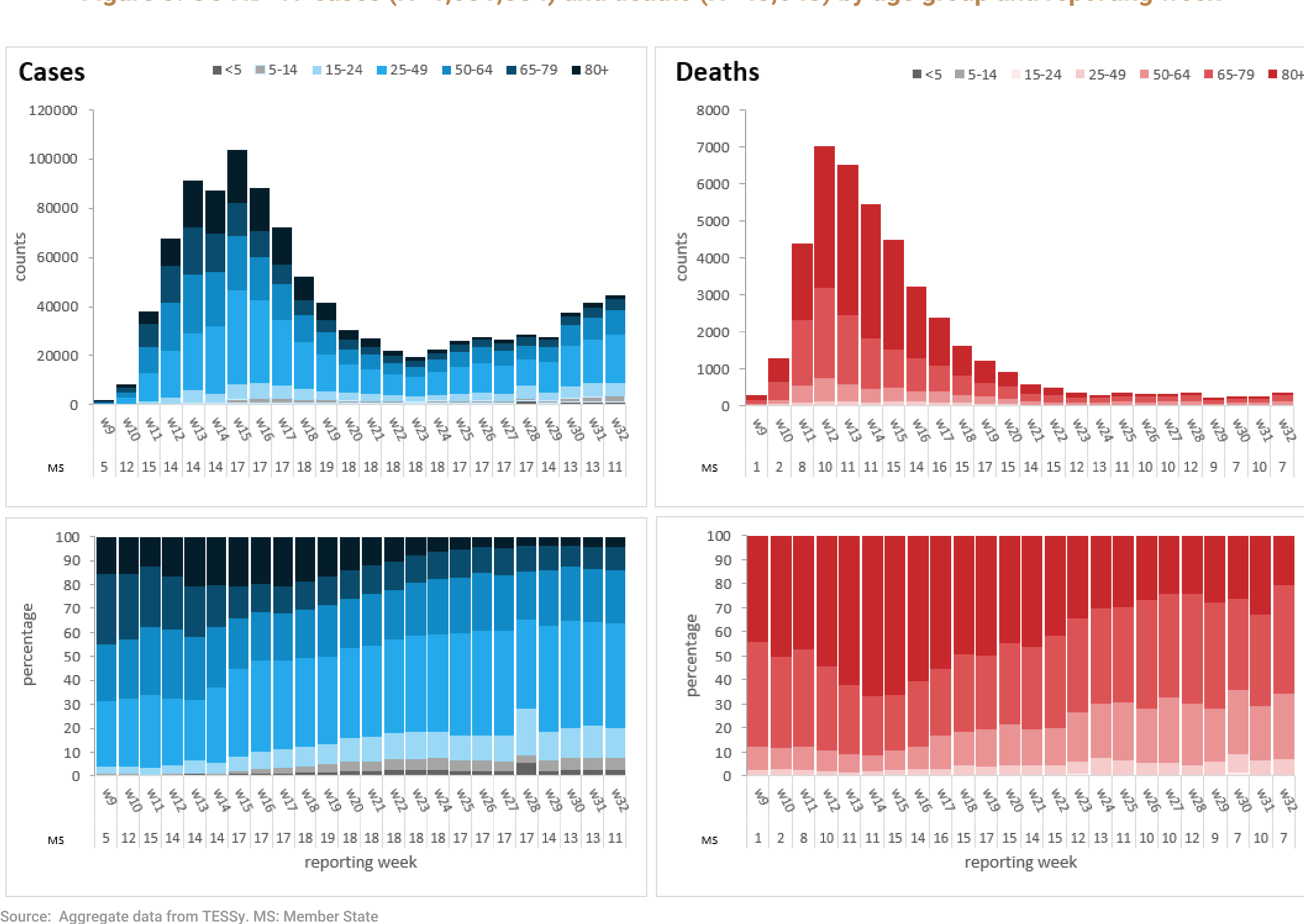
The designations employed and the presentation of the information in this Web site do not imply the expression of any opinion whatsoever on the part of the Secretariat of the World Health Organization concerning the legal status of any country, territory, city or area or of its authorities, or concerning the delimitation of its frontiers or boundaries.

Table 1. Characteristics of COVID-19 deaths

Characteristics	n	%	Total records with data available
Age in years, median (range)	76	(0-104)	96,843
Sex, male	55,768	58	96,673
At least one underlying condition	40,755	95	42,939
• cardiovascular disease	7,508	75	9,959
• diabetes	1,967	40	4,921
• lung disease	1,708	29	5,976
• neurological disease / dementia	2,072	25	8,163
• renal disease	849	24	3,568
• obesity	418	11	3,881
• liver disease	425	6	7,404
• immune disease	68	2	3,887
• other	1,049	22	4,733

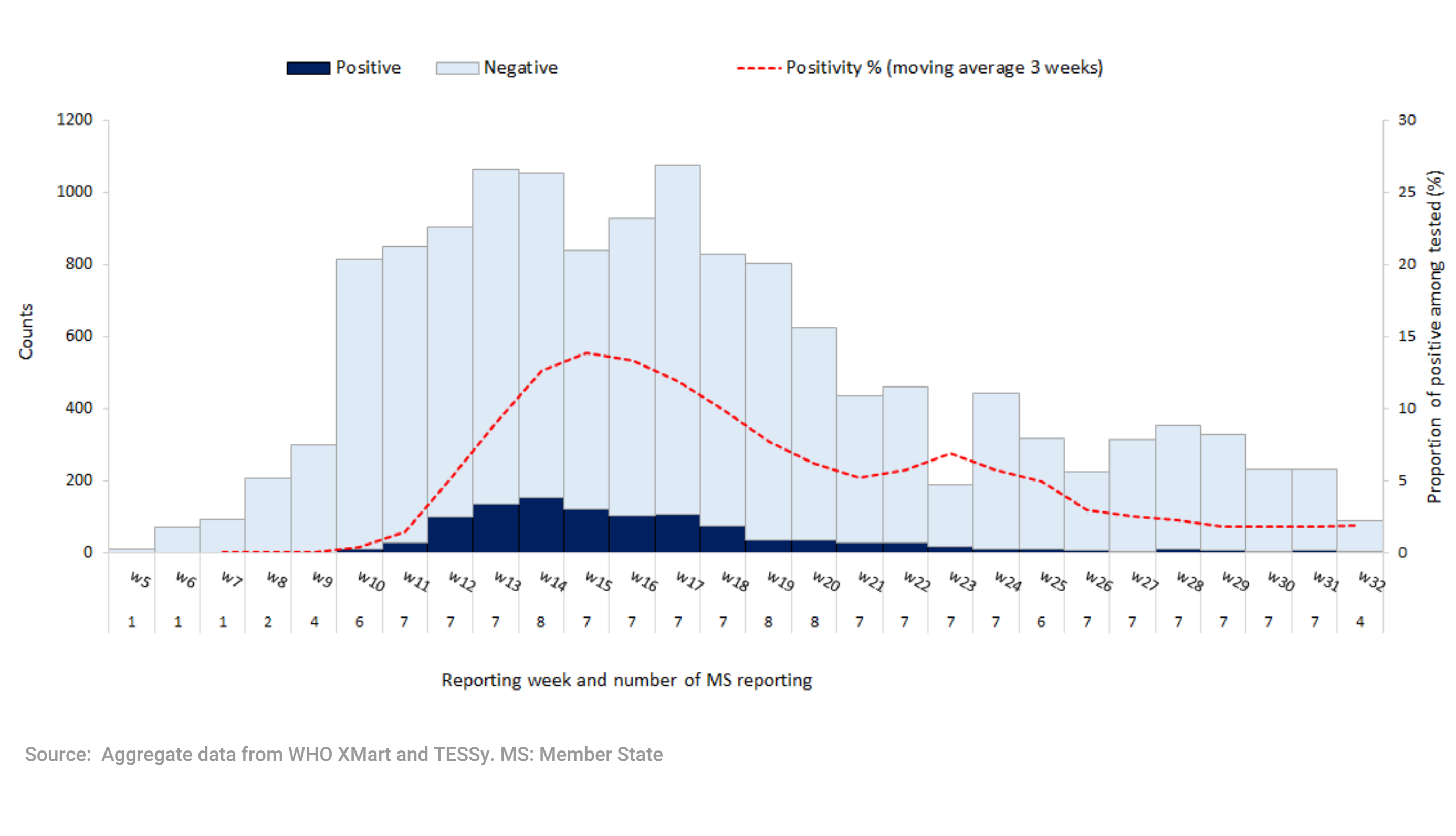
Source: Mortality database (n=96,854)

Figure 3. COVID-19 cases (N=1,031,584) and deaths (N=43,043) by age group and reporting week



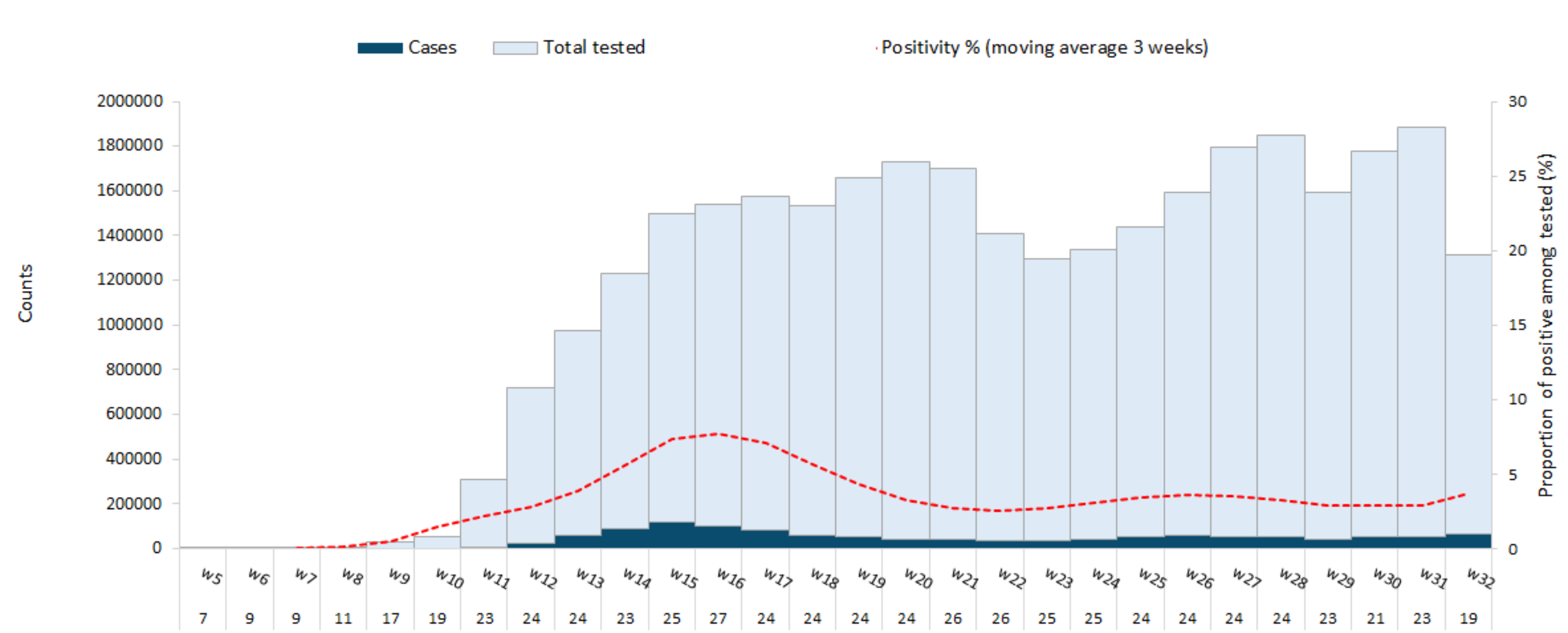
Source: Aggregate data from TESSy. MS: Member State

Figure 4. Percentage positive for COVID-19 in the ILI/ILI sentinel surveillance by reporting week



Source: Aggregate data from WHO Xmart and TESSy. MS: Member State

Figure 5. Percentage positive for COVID-19 among all tested by reporting week



Source: Aggregate data from WHO Xmart and TESSy. Note: Member States that report cases only (no testing data) are not included. MS: Member State